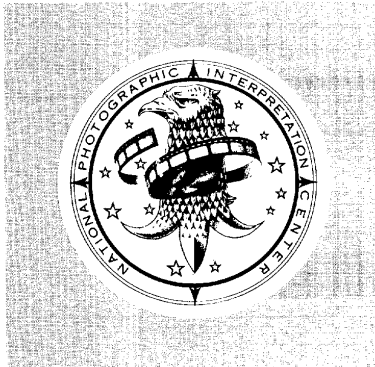


25X1



NATIONAL PHOTOGRAPHIC
INTERPRETATION CENTER

**PHOTO
INTERPRETATION
NOTE**

**AIR-TO-SURFACE MISSILE
FACILITY KALININ AIRFIELD
USSR**

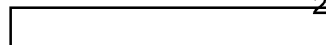
DECLASS REVIEW by NIMA/DOD

25X1



TOP SECRET

25X1



25X1

**MAY 1971
COPY NO 118
2 PAGES
PIN-070/71**

25X1

25X1
25X1AIR-TO-SURFACE MISSILE FACILITY
KALININ AIRFIELD, USSR

1. An air-to-surface missile (ASM) facility and an associated bipropellant storage facility were nearing completion at Kalinin Airfield as of [REDACTED] (Figure 1). The airfield, a Soviet Long-Range Aviation (LRA) bomber base with a normal complement of 54 BADGER C or G aircraft, is 90 nautical miles (nm) northwest of Moscow in European USSR.¹

2. The separately secured ASM facility is approximately 1 nm northwest of the center of the main runway. It contains a T-shaped initial assembly and checkout building, a rectangular final assembly and checkout building, two fueling aprons, and a probable vehicle or equipment storage building (Figure 2).

3. The associated bipropellant storage facility is 1.2 nm northwest of the center of the main runway. This fenced facility has a characteristic double loop road, an oxidizer storage building, and six support buildings. The presence of POL tanks could not be determined.

4. These facilities were in an early stage of construction when they were first reported in [REDACTED] and a review of earlier photography revealed that construction had begun in [REDACTED]

NPIC/IEG/WGD/SSB Project 111114NQ

¹DIA. SSO/DIA-240-2-7-71-INT, Soviet Aircraft Order of Battle, 1 Jan 71 [REDACTED]

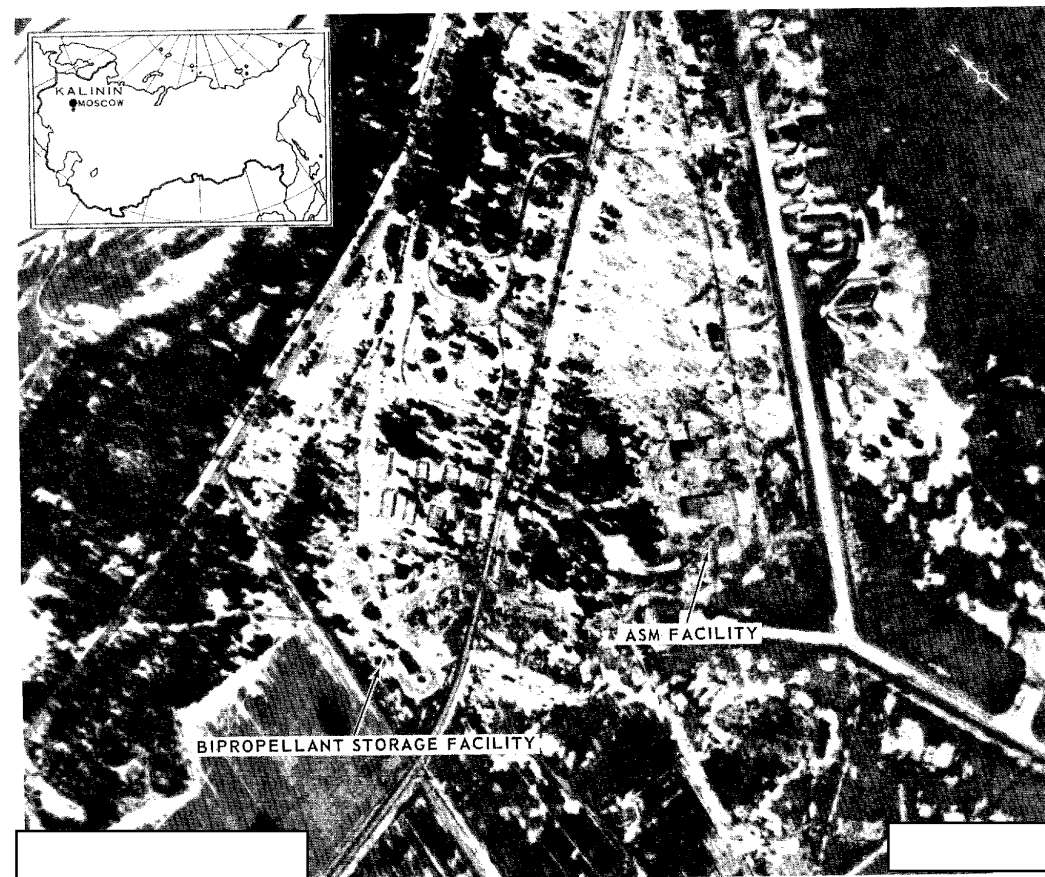


FIGURE 1. ASM FACILITY, KALININ AIRFIELD, USSR, [REDACTED]

25X1

Next 1 Page(s) In Document Exempt