

TOP SECRET QUEST

No Pages 3

Copy No 11

JOINT PHOTOGRAPHIC INTELLIGENCE BRIEF

ARMY-NAVY-CIA

(Published and Disseminated by CIA/PIC)

SUBJECT : Surface-to-Air Missile Site

NO : PIC/JB-97/60

DATE : 27 May 1960

LOCATION: 14 nm SE of Sverdlovsk, USSR

COORD: 56°44'N 60°57'E

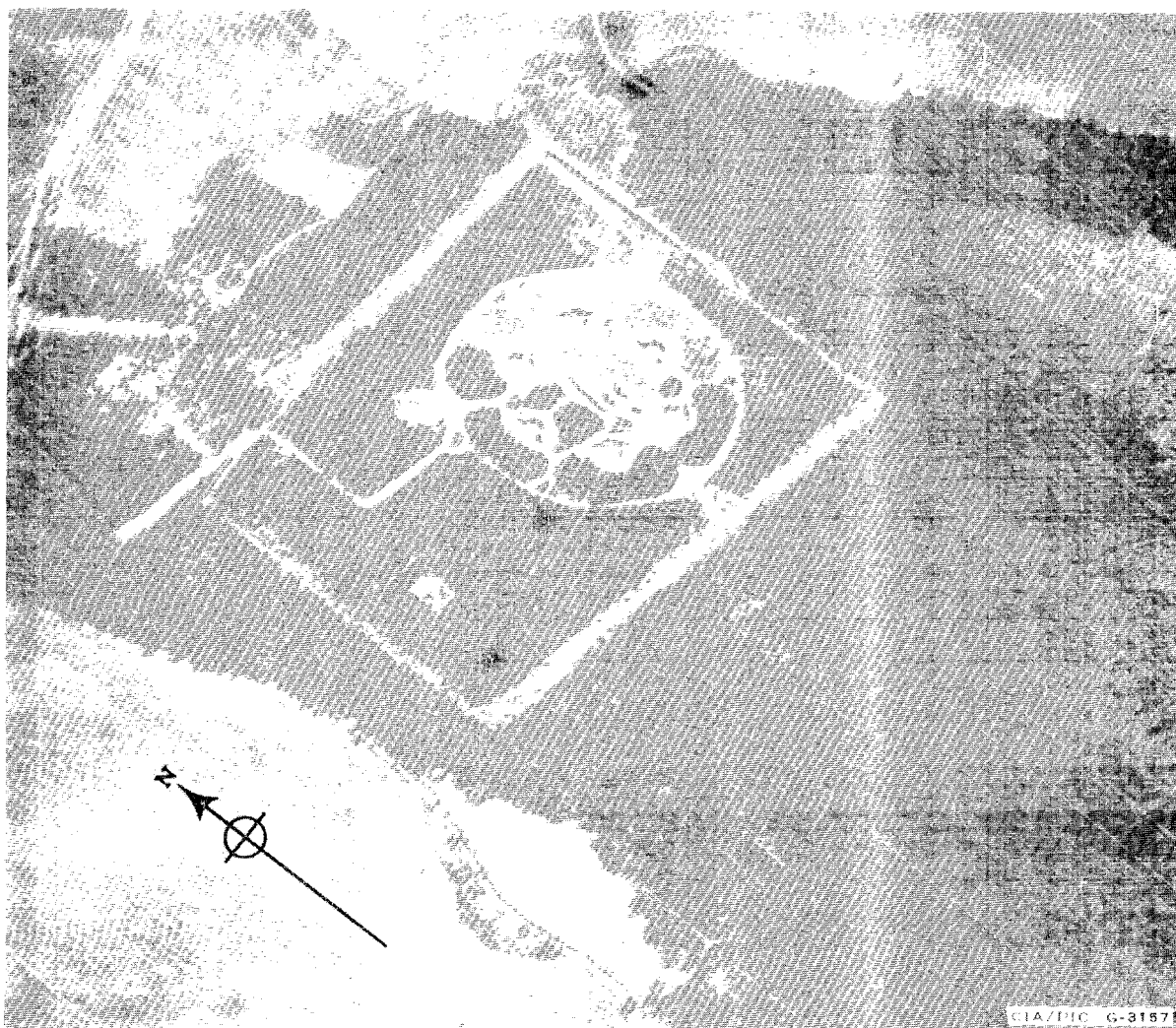


Figure 1. SAM SITE 14 NM SE OF SVERDLOVSK.

Declass Review by
NIMA/DOD

VITAL RECORDS COPY

TOP SECRET QUEST

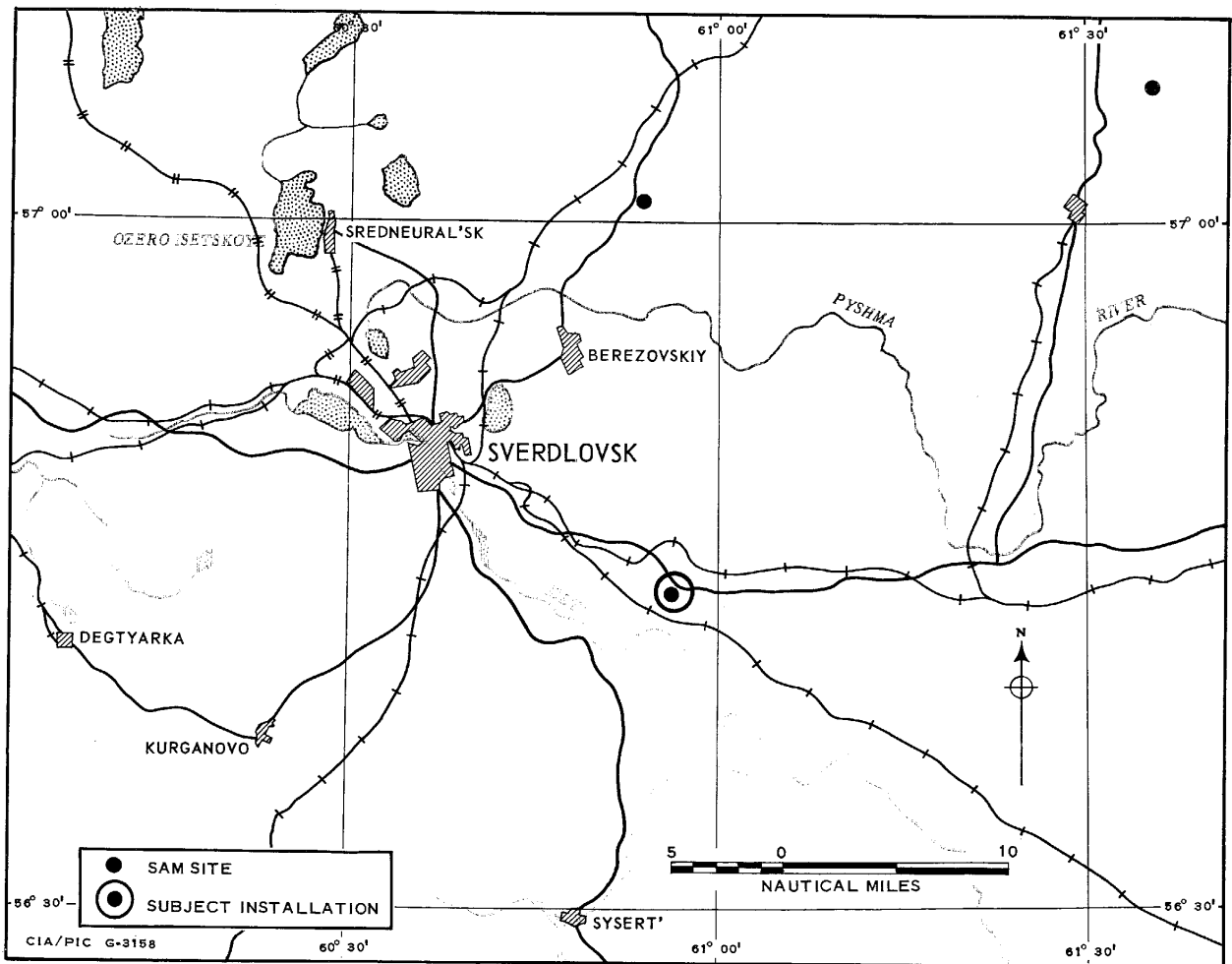


FIGURE 2. SAM SITES IN THE SVERDLOVSK AREA. Date of information [REDACTED]

TOP SECRET CHESS

- 2 -

TOP SECRET CHESS

PIC/JB-97/60

25X1D

PIC/JB-97/60

25X1A

REFERENCE POINT:

Sverdlovsk RR Station, Yards and Shops, Main, [REDACTED]
56°51'30"N - 60°35'55"E.

LOCATION:

14 nm southeast of reference point.

FUNCTION:

One of the sites deployed for the defense of Sverdlovsk.

SITE STATUS:

Late stage of construction.

SECURITY:

Board fence under construction around operations area.

REMARKS:

Excavation of the six launch pits, the guidance area revetments and the missile hold revetments have been completed. Grading has begun on the complex network of service roads. Four pyramidal tents and three small support buildings are located at the site. Site is situated on flat terrain in a forested area.

MAP REFERENCES:

WAC 156; AMS-Series N 502, Sheet NO 41-10.

25X1D

