

JOINT PHOTOGRAPHIC INTELLIGENCE BRIEF

ARMY-NAVY-CIA

(Published and Disseminated by CIA/PIC)

SUBJECT : Surface-to-Air Missile
(SAM) Launch Sites

NO : PIC/JB-121/60

DATE: 23 November 1960

LOCATION: Sovetskaya Gavan, USSR

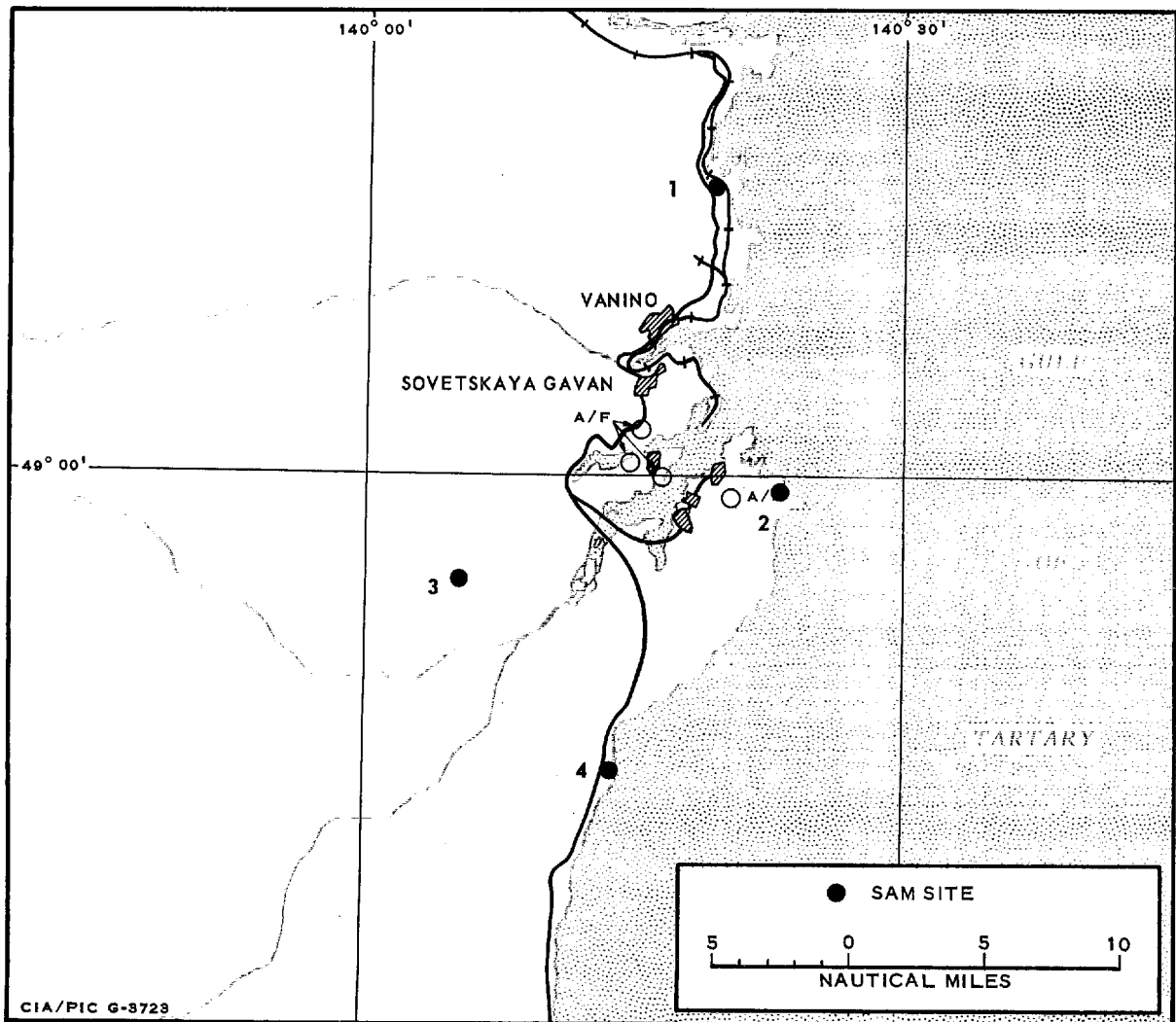


FIGURE 1. LOCATION OF SAM LAUNCH SITES, SOVETSKAYA GAVAN.

Declass Review by
NIMA/DOD

VITAL RECORDS COPY

PIC/JP-121/60

25X1A

REFERENCE POINT (RP)

Sovetskaya Gavan Railroad Station, Yards, and Shops, [REDACTED]

[REDACTED] Coord 49-03-30N 140-16-00E.

25X1A

MAPS or CHARTS

AMS. Series N 504, Sheets NM 54-8 (Datta) and NM 54-11 (Sovetskaya Gavan), 1st ed, 1950, scale 1:250,000 (U)

ACIC. Operational Navigational Chart (ONC) 204, 1st classified ed, Jul 58, scale 1:1,000,000 (C)

SAC. US Air Target Chart, Series 200, Sheets 0204-19A and 0204-20A, 1st ed, Jan 59, scale 1:200,000 (S)

SUMMARY

Sovetskaya Gavan is one of the most important air and naval bases in the Soviet Far East, ranking second only to Vladivostok. Four SAM launch sites deployed for defense of Sovetskaya Gavan have been identified on photography of [REDACTED]. No SAM support facility was identified on the photography of this area.

25X1D

Two of the SAM sites are near coastal defense areas that appeared active on [REDACTED] TALENT photography. One of these sites (item 2) was constructed near an eight-gun heavy anti-aircraft position; the other site (item 4) is close to an established coastal defense and electronics position. The quality and scale of the [REDACTED] photography preclude detailed interpretation of these sites.

25X1D

25X1D

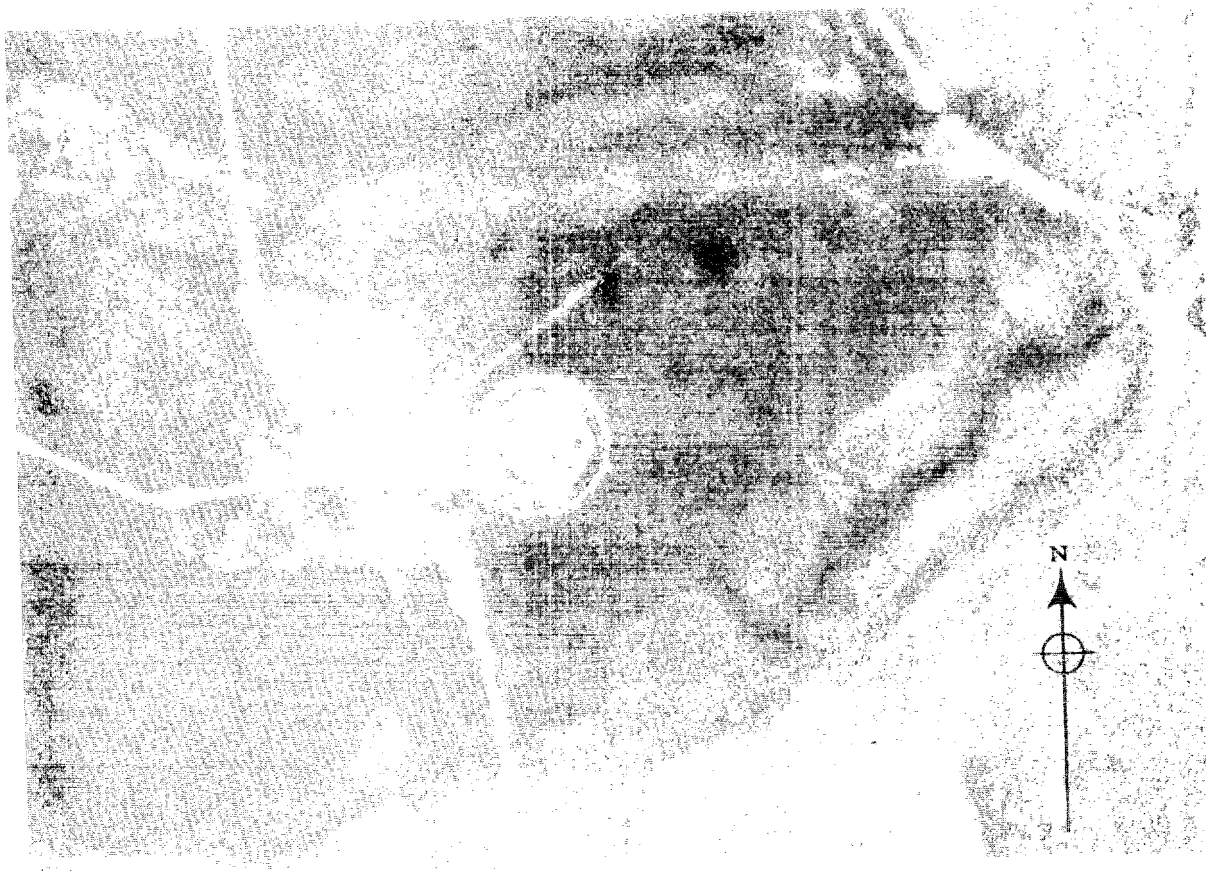


FIGURE 2. SAM SITE NNE OF SOVETSKAYA GAVAN (see Fig 1, Item 1).

COORD

49-11N 140-19E.

LOCATION

3 nm NNE of RP, on coast 2 nm SW of Mys (Point) Duanko and 5.5 nm SE of Alekseevskoye Airfield.

REMARKS

Construction is probably complete or in final stages, and the site is probably operational. The operations area appears complete. The circular road, launch revetments, three missile-hold revetments, and guidance revetment are probably complete. A probable support area is just west of the operations area. An irregularly shaped fence encloses the operations area.

25X1D



PIC/JB-121/60

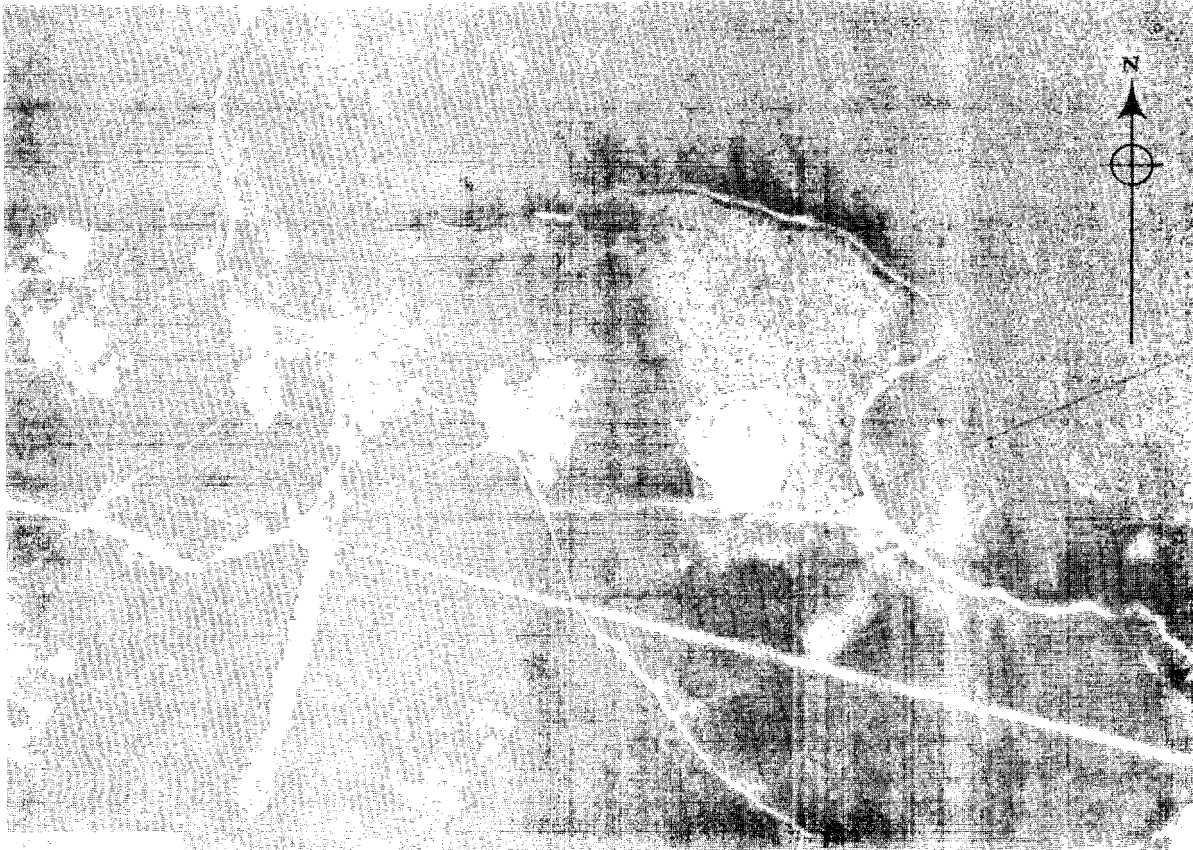


FIGURE 3. SAM SITE SE OF SOVETSKAYA GAVAN (see Fig 1, Item 2).

COORD

48-59N 140-23E.

LOCATION

6.5 nm SE of RP, on coastal lowland one nm NW of Mys Nikolaya and just SE of previously established antiaircraft position.

REMARKS

The site is probably operational. The operations area and a probable support area appear complete or in final stages of construction. The operations area consists of a completed circular road, launch and guidance revetments, and three missile-hold revetments. The probable support area is just southwest of the operations area. No security fencing can be seen.

25X1D



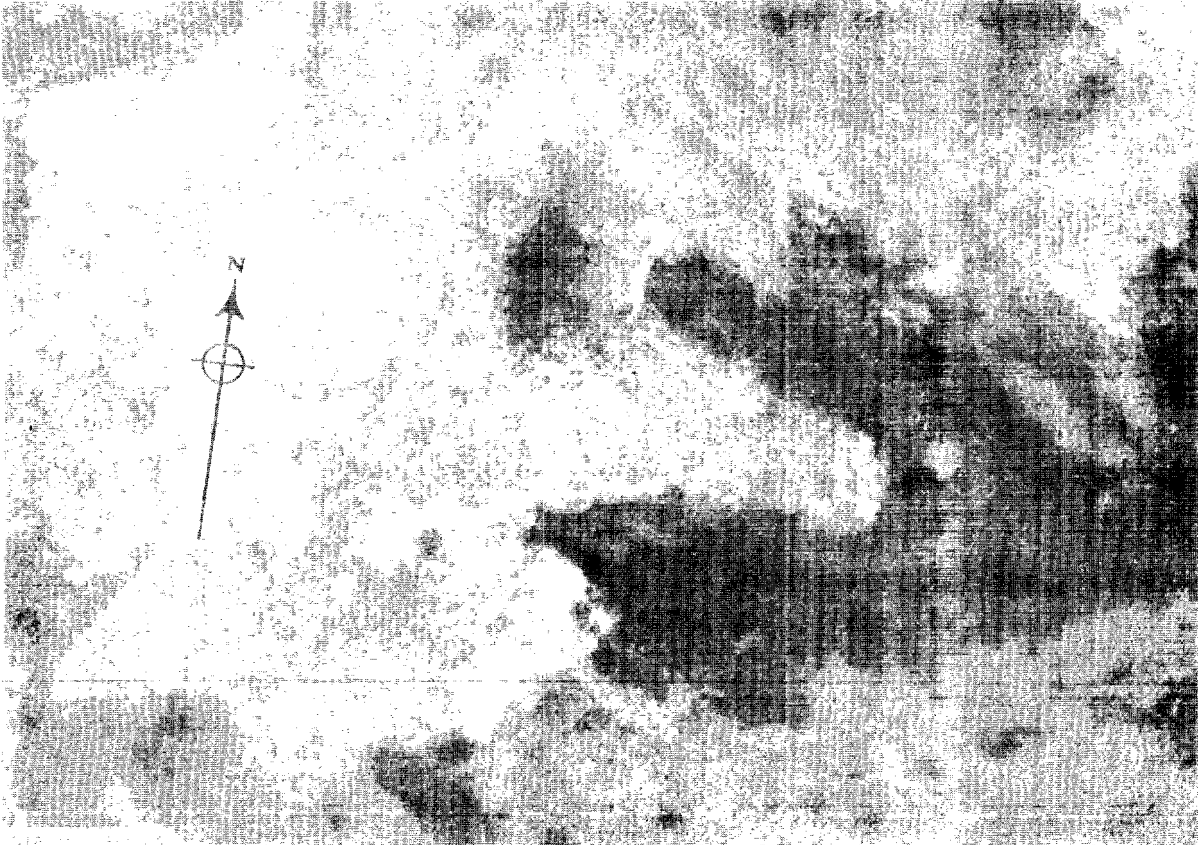


FIGURE 4. SAM SITE SW OF SOVETSKAYA GAVAN (see Fig 1, Item 3).

COORD

48-56N 140-05E.

LOCATION

Approximately 10 nm SW of RP, in hilly terrain 3 nm E of Sovetskaya Gavan/Maygatka Airfield.

REMARKS

Construction appears complete, and the site is probably operational. The operations area consists of a completed circular road, launch and guidance revetments, and three missile-hold revetments. A probable support area is just northwest of the operations area. The operations area is enclosed by a fence.

25X1D



OTC/JB-121/60



FIGURE 5. SAM SITE SSW OF SOVETSKAYA GAVAN (see Fig 1, Item 4).

COORD

48-49N 140-14E.

LOCATION

14.5 nm SSW of RP. Site was constructed on a hill at a previously established coastal defense/early warning area (identified on TALENT photography).

25X1D

REMARKS

The site is probably in the mid stage of construction and not operational. The circular road and launch and guidance revetments in the operations area appear complete. A probable support area is just north of the operations area. No security fence for the operations area is discernible.

25X1D

Approved For Release 2001/11/05 : CIA-RDP78T04751A000300080041-0

25X1A

Approved For Release 2001/11/05 : CIA-RDP78T04751A000300080041-0