

No. Pages :

SECRET

COPY NO.:

PHOTOGRAPHIC INTELLIGENCE MEMORANDUM

RAILROAD YARDS AND SHOPS
VYAZMA, USSR



HTA-M28-57

6 AUGUST 1957

DOCUMENT NO. _____
NO CHANGE IN CLASS.
 DECLASSIFIED
CLASS. CHANGED TO: TS ^{SC} 2012
NEXT REVIEW DATE: _____
AUTH: HR 70-2
DATE: 10 JUN 1982 REVIEWER: 0109599

WARNING: HANDLE VIA CONTROL CHANNELS ONLY

CENTRAL INTELLIGENCE AGENCY

OFFICE OF RESEARCH AND REPORTS

This document contains information usable only within the TALENT CONTROL SYSTEM. It is to be seen on a MUST-KNOW BASIS ONLY BY PERSONNEL ESPECIALLY INDOCTRINATED AND AUTHORIZED. Reproduction is prohibited unless approved by the originator.

DECLASS REVIEW by NIMA/DOD

SECRET

**T
A
L
E
N
T**

WARNING

This material contains information affecting the National Defense of the United States within the meaning of the espionage laws, Title 18, USC, Secs. 793 and 794, the transmission or revelation of which in any manner to an unauthorized person is prohibited by law.

SECRET

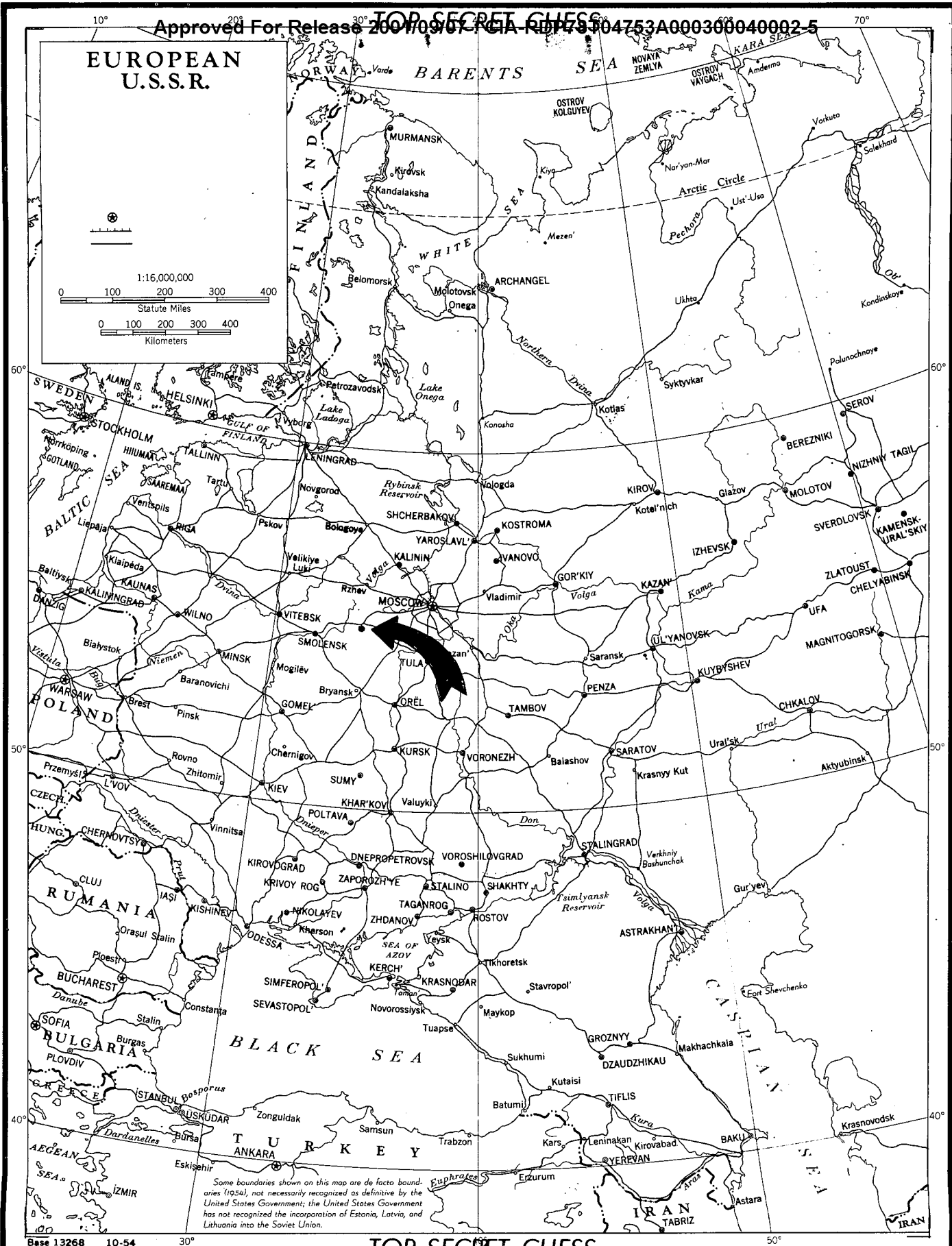
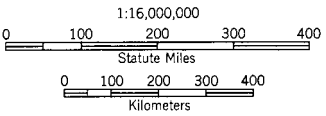
RAILROAD YARDS AND SHOPS
VYAZMA, USSR

HTA-M28-57

6 AUGUST 1957

SECRET

EUROPEAN U.S.S.R.



Some boundaries shown on this map are de facto boundaries (1954), not necessarily recognized as definitive by the United States Government; the United States Government has not recognized the incorporation of Estonia, Latvia, and Lithuania into the Soviet Union.

TOP SECRET CHESS

HTA-M28-57

RAILROAD YARDS AND SHOPS
VYAZMA, USSR

Vyazma is located approximately 100 miles east-northeast of Smolensk and 140 miles west-southwest of Moscow. It is the junction of the Brest-Moscow railroad and the north-south line from Leningrad to points in central and southern European USSR.

The Vyazma railroad yards and shops suffered heavy damage during World War II. A comparison of [REDACTED] photography with that of 25X1D World War II reveals the following changes in addition to repair of war damage. The roundhouse in which locomotives were formerly serviced and repaired has been replaced by three sheds and one shop building. Near the north end of the rail yards is a new fenced warehouse area containing seven large buildings. Nearby, a transshipping site has apparently been abandoned. In the southern part of the yards a new passenger station and service building has been rebuilt on the site of the old one, and a new freight shed has replaced several small sheds. Just north of the main holding and receiving yard is a former turning loop, now used for car storage. An area with rail sidings located east of the main holding and receiving yard, has been fenced since World War II. Nearby is an abandoned turning wye and rail line, the southeast portion of which is now being used as a road.

Components of the railroad yards and shops at Vyazma are annotated on the photograph and described in the accompanying key.

TOP SECRET CHESS

TOP SECRET CHESS

KEY TO ANNOTATIONS

1. Machine shop and service building, 360'x 50'. Rebuilt on former site.
2. Car shed, 210'x 80'. Rebuilt on former site.
3. Freight shed, 485'x 35'. New; replaces several small sheds.
4. Passenger service building, 115'x 60'. New since World War II. Elevated pedestrian walkway 160' long attached to this building gives access to the passenger tracks.
5. Passenger station: 150'x 85' center section; two 75'x 140' wings. New since World War II. Built on site of former station.
6. South classification yard, approximately 3000' long, 15-20 tracks. No basic change in size or trackage since World War II.
7. Turntable, 90' diameter. No change since World War II.
8. Repair and service area. Completely new facility replacing roundhouse and shops.
9. Locomotive repair and service sheds: one 195'x 95', and two 240'x 90'. New since World War II. Each shed has three through tracks.
10. Machine shop, 350'x 50'. Rebuilt on former site.
11. Main holding and receiving yard, 3700'x 350', 10-15 tracks. No basic change in size or trackage since World War II.
12. Open coal storage area, 2000'x 440'. Approximately same size as in World War II. Number of tracks not discernible.
13. Former turning loop. Now used for car storage.
14. Fenced open storage area, approximately 2400'x 500'. Contains three storage sheds: one 150'x 30', one 130'x 30', and one 50'x 30'. Also contains twenty possible storage sheds, each 30'x 30'. Area originally served by rail, now served only by road. No change in size since World War II.
15. Fenced area with open water reservoir, 75'x 70'.
16. Fenced area with rail sidings for possible storage of military rolling stock. Area fenced since World War II.
17. Abandoned turning wye and rail line. SE portion now being used as road.
18. Holding and receiving yard. Consists of 4-6 tracks, with two tracks serving a loading platform 700' long and 60' wide. Same amount of trackage as in World War II.
19. Former railroad transshipping site. Not rail served as in World War II. Apparently abandoned.
20. New warehouse area. Seven buildings: two 210'x 75', one 280'x 85', three 160'x 85', and one 140'x 75'. Area fenced and rail served. Constructed since World War II.

TOP SECRET CHESS

TOP SECRET - CHESS

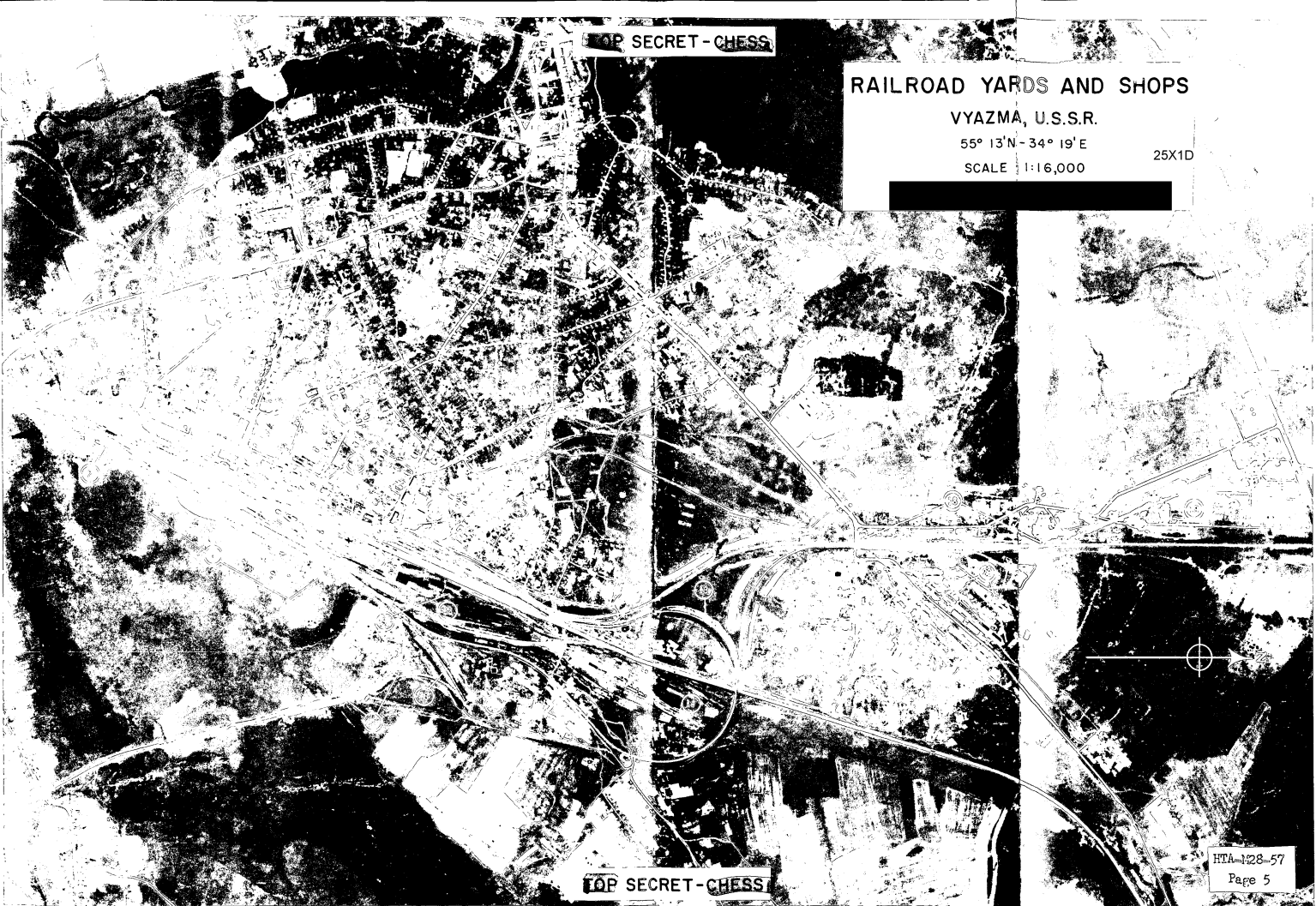
RAILROAD YARDS AND SHOPS

VYAZMA, U.S.S.R.

55° 13' N - 34° 19' E

SCALE 1:16,000

25X1D



TOP SECRET - CHESS

SECRET

HTA-M28-57

REQUIREMENT: Prepared in answer to RR/HTA/E/R14/57 requesting changes since World War II in the Vyazma Railroad Yards and Shops.

25X1D

REFERENCES:

25X1A

COORDINATES: 55°13'N - 34°19'E

25X1A

SECRET