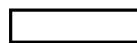


TOP SECRET

Copy **108**
25 Pages



25X1

1 December 1963

EVALUATIONS OF SOVIET SURFACE-TO-SURFACE MISSILE DEPLOYMENT

10TH REVISION

A Report of the Deployment Working Group
of the

Guided Missiles and Astronautics Intelligence Committee



25X1

DECLASS REVIEW by NIMA/DOD

TOP SECRET

GROUP 1
Excluded from automatic
downgrading and declassification

TOP SECRET



25X1

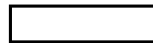
EVALUATIONS OF SOVIET
SURFACE-TO-SURFACE
MISSILE DEPLOYMENT

10TH REVISION

A Report of the Deployment Working Group

of the

Guided Missiles and Astronautics Intelligence Committee



1 December 1963

25X1

TOP SECRET



25X1

TOP SECRET



25X1

25X1



The Guided Missiles and Astronautics Intelligence Committee (GMAIC) wishes to express its appreciation to the National Photographic Interpretation Center for its assistance in the editing, illustration, and publication of this report.



25X1

25X1

Approved For Release 2003/09/26 : CIA-RDP78T04757A000300010009-7

Approved For Release 2003/09/26 : CIA-RDP78T04757A000300010009-7

CONTENTS

	Page
INTRODUCTION	1
Table 1. Summary of Estimated Status of Identified ICBM and MRBM/IRBM Launchers at Deployed Complexes	8
Table 2. Summary Evaluation of Soviet ICBM Deployment	9
Table 3. Summary Evaluation of Soviet MRBM/IRBM Deployment	12

ILLUSTRATIONS

	Page
Figure 1. Deployment of Soviet ICBM Complexes	Facing 1
Figure 2. Typical Configurations of ICBM Launch Sites, and Explanation of Types	2
Figure 3. Suspect Installation at Yedrovo	3
Figure 4. Deployment of Soviet MRBM/IRBM Complexes	4
Figure 5. Typical Configurations of MRBM/IRBM Launch Sites	6
Figure 6. Fixed Field-Type MRBM Sites	7
Figure 7. Possible MRBM Training Site, Sovetskaya Gavan	7

PREFACE

This report, formerly published bimonthly by the GMAIC Deployment Working Group (DWG) in mimeograph form, has been expanded to include additional data. It will continue to be published bimonthly in this new format.

Dissemination of the report was previously limited to holders of the DWG report, Soviet Surface-to-Surface Missile Deployment. Because the information contained herein is both supplemental and self-sustaining, distribution will no longer be limited to holders of the above report.

The current format provides a comprehensive, ready reference listing of all ICBM, IRBM, and MRBM deployment locations, types of site configurations, photographic references, estimated construction and operational status, and other evaluations of the DWG. Additional data may be added to future revisions.

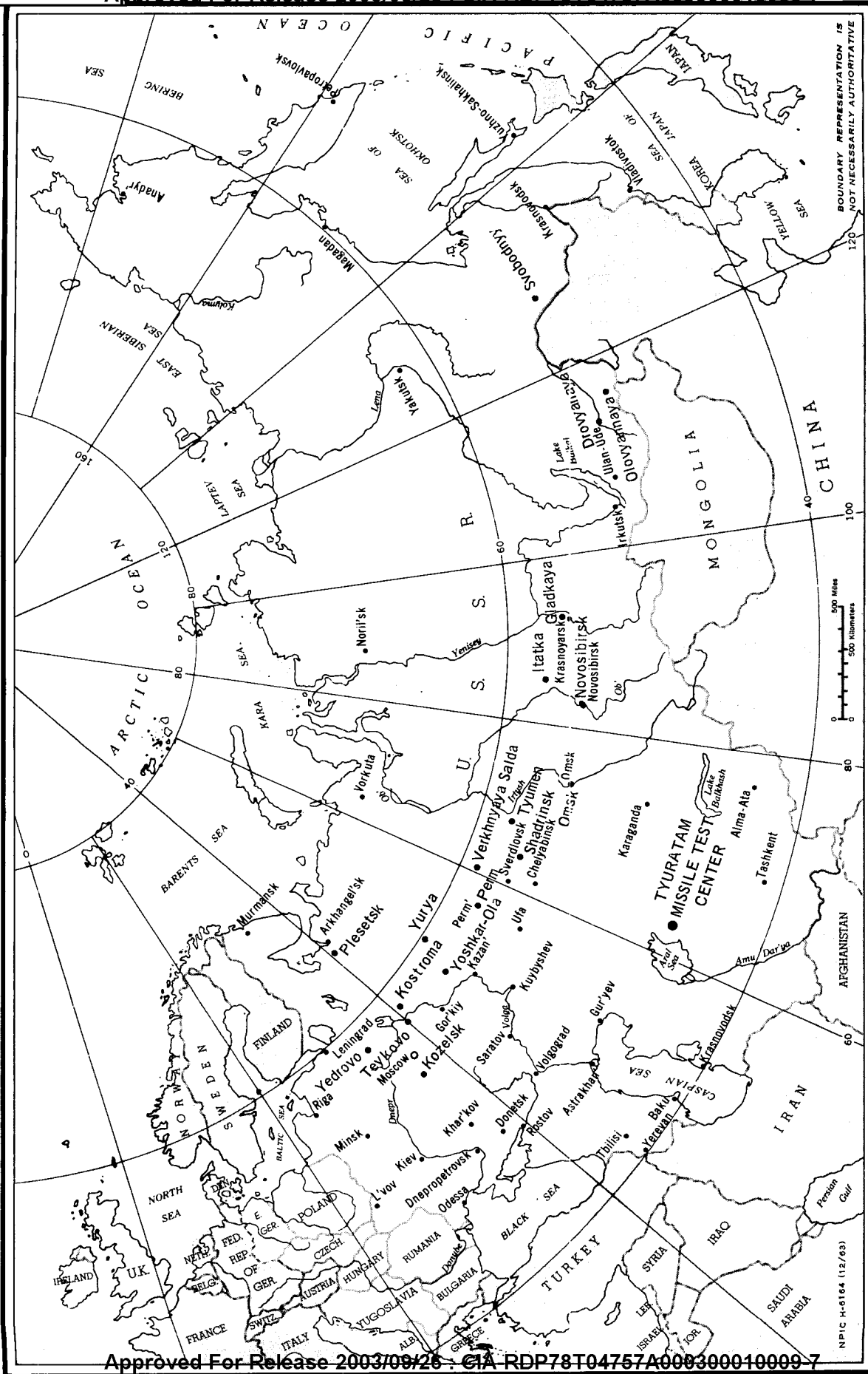


FIGURE 1. DEPLOYMENT OF SOVIET ICBM COMPLEXES.

Scale: 0 to 500 Miles / 0 to 500 Kilometers

NPIC H-6164 (12/65)

37377 7-63

TOP SECRET

25X1

[redacted] 25X1

INTRODUCTION

This report is the tenth revision of Evaluations of Soviet Surface-to-Surface Missile Deployment prepared by the Deployment Working Group of the Guided Missiles and Astronautics Intelligence Committee. The ninth revision, dated 1 October 1963 and disseminated under control number [redacted] should be destroyed in accordance with existing instructions for handling [redacted] material.

included most of these Type IID as being operational on [redacted]

25X1

The ICBM sites have been designated by types for the purpose of standardization, as shown and explained in Figure 2.

The new ICBM launch sites are located at the following complexes:

- GLADKAYA
Launch Site D (5), Possible, Type undetermined
- KOSTROMA
Launch Site H (8), Probable, Type IIIA
- OLOVYANNAYA
Launch Site C (3), Probable, Type IIIA
- TEYKOVO
Launch Site F (6), Type IID
Launch Site G (7), Type IID
- YEDROVO
Launch Site H (9), Type IIIA
Launch Site I (3), see page 3.

Developments at Type IIC Sites

As reported previously, no new sites of this type have been identified since [redacted]. The last photographic coverage of Tyumen was obtained in [redacted] when Launch Site B was reported as INACTIVE while construction continued at the other two sites. All Type IIC sites have been assessed as complete and operational except Launch Site B at Tyumen.

25X1

25X1

ICBM Firing from Plesetsk, 22 October 1963

The ICBM firing to Kamchatka on [redacted] probably was a training or systems reliability test from an operational ICBM site at the Plesetsk complex. This constitutes the first known launch of an ICBM from a point other than the Tyuratam Missile Test Center.

25X1

25X1

No telemetry or tracking was noted during the missile flight, and the [redacted] derived launch point falls in the vicinity of the Plesetsk complex. Insufficient data preclude an assessment as to the type of ICBM--SS-6, SS-7, or SS-8--that was launched.

25X1

[redacted] and continuing analysis of previous missions have provided additional information on the Soviet ballistic missile deployment program. The new data are reflected in the estimates and operational status shown in Tables 2 and 3. Cut off date for this report is 15 November 1963.

SOVIET ICBM DEPLOYMENT

At the 18 ICBM complexes, three new hard sites, two new soft sites, one possible site, and one suspect site of undetermined type at Yedrovo have been added. These newly identified ICBM sites raise the total number of confirmed and probable deployed sites to 100 (224 launchers), and 3 sites in the possible category. All of the possible sites are in very early stages of construction and it is not yet possible to make a firm evaluation. Of the 224 launchers, almost 150 are considered to be operational. See Figure 1 for locations of deployed ICBM complexes.

The number of operational launchers may be somewhat smaller than indicated in Table 1 because the lack of recent photography has made it difficult to determine the exact month of completion of many of these sites. Most Type IID sites were started in a relatively short period of time after [redacted] and many of these sites should be completed in the [redacted] time period. Therefore, we have

25X1

25X1

25X1

25X1

25X1

25X1

TOP SECRET

25X1

25X1

Approved For Release 2003/09/26 : CIA-RDP78T04757A000300010009-7

Approved For Release 2003/09/26 : CIA-RDP78T04757A000300010009-7

TOP SECRET

25X1

25X1

Suspect Installation at Yedrovo

The Deployment Working Group has examined the evidence on a suspect installation at the Yedrovo ICBM complex (Figure 3). Listed below are the major arguments for and against this installation being an ICBM site.

Arguments For:

- 1. This installation is appropriately located within the complex in relation to the other confirmed launch sites.
- 2. The installation has double security fencing, enclosing an area of about the same size as other known sites.
- 3. One photo analysis suggests an impression of a loop road pattern, control bunker, and spray pond--these features oriented in the

same manner as the other confirmed hard site at Yedrovo.

4. There is an adjacent support area, as is the case in other hard sites, and wide-radius turns in the road entering the site location.

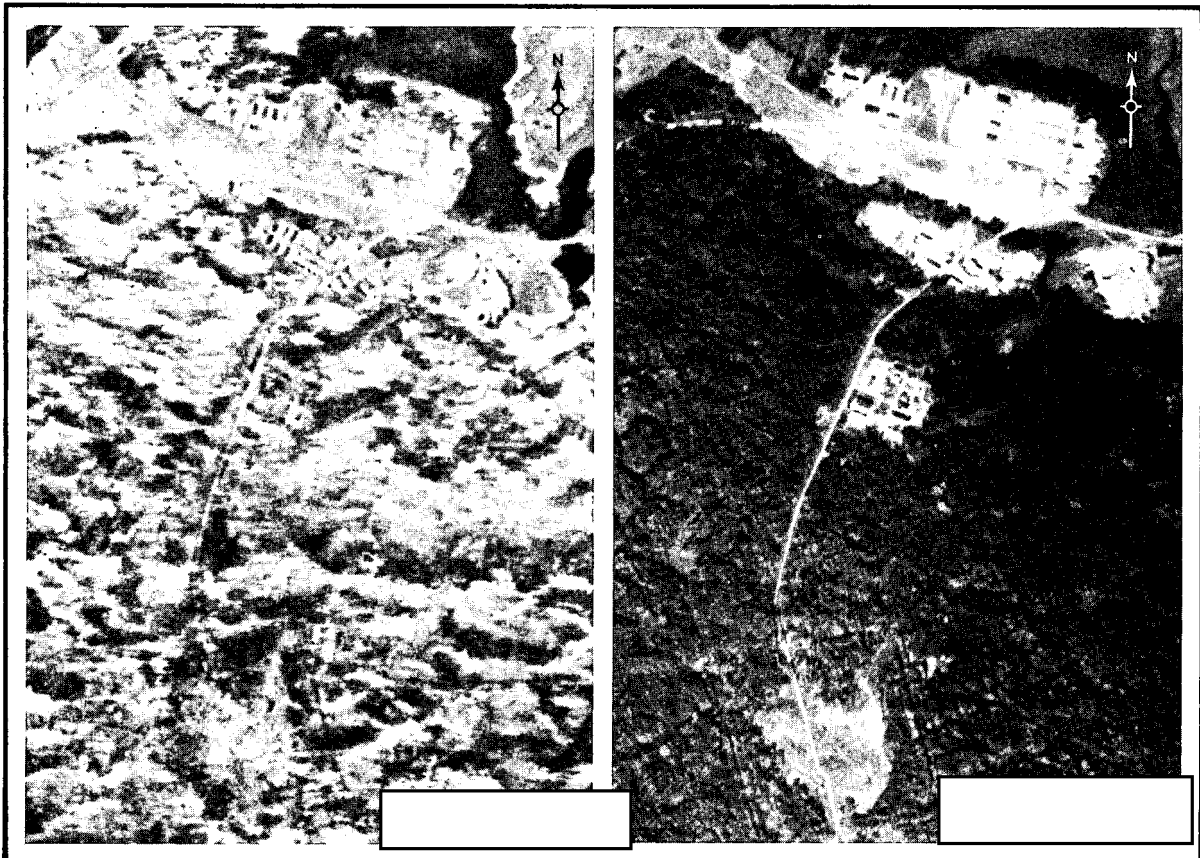
Arguments Against:

- 1. Another photo analysis indicates no identifiable site elements on any photo coverage. No excavation was seen on either [redacted] [redacted] This indicates that the excavation, silo construction, and back-filling must have occurred in 12 months. This timing is only half that required at other hard sites.
- 2. [redacted] shows considerable snow cover. Track activity is apparent at all launch sites under construction in the complex on this photo coverage, but not at this location.

25X1

25X1

25X1



25X1

25X1

FIGURE 3. SUSPECT INSTALLATION AT YEDROVO.

NPIC H-6166 (12/63)

TOP SECRET

25X1

TOP SECRET

25X1

25X1

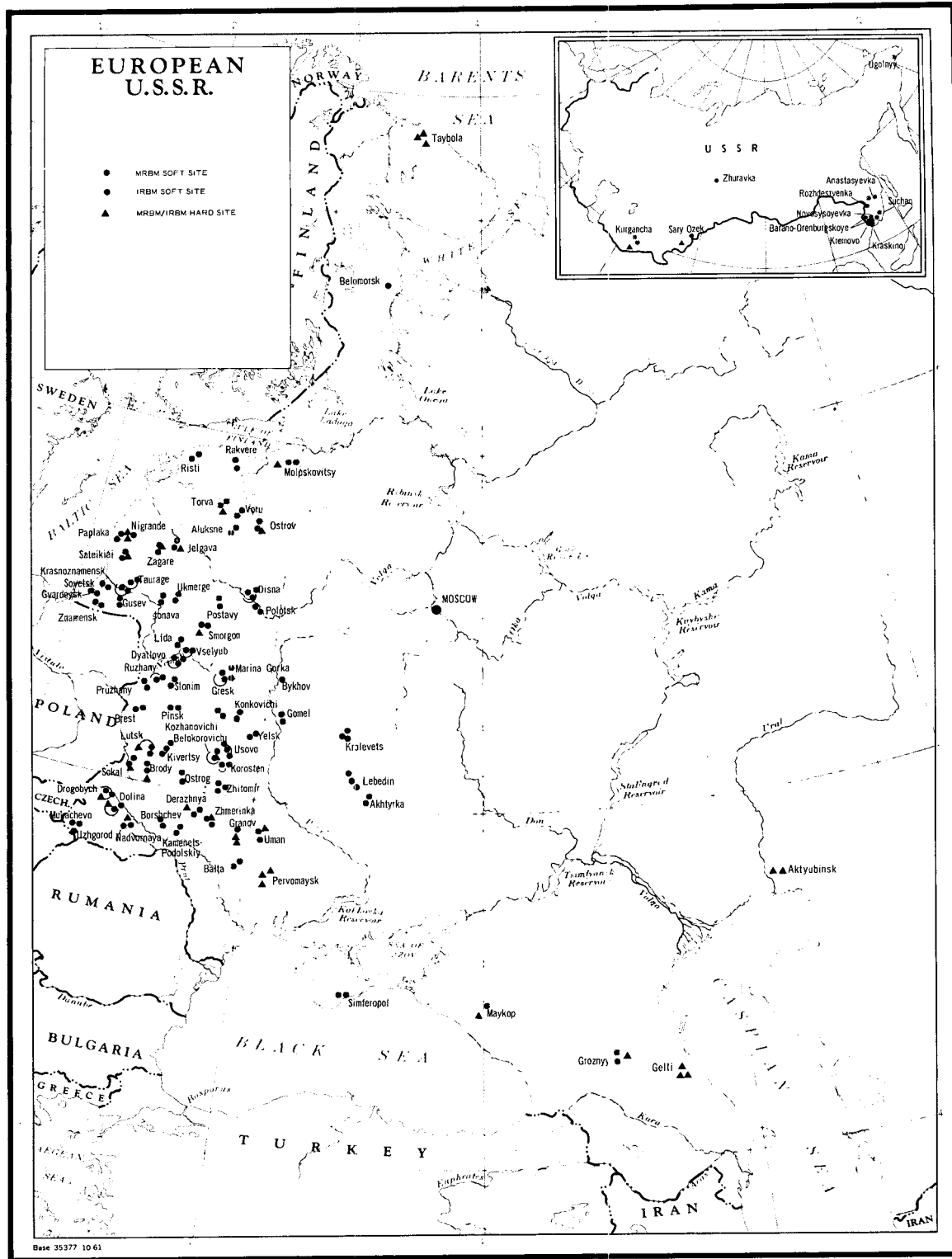


FIGURE 4. DEPLOYMENT OF SOVIET MRBM/IRBM COMPLEXES.

NPIC H-6167 (12/63)

TOP SECRET

25X1

[redacted]

3. Photo interpretation, to some members, indicates that the cleared area and the elements therein appear basically identical when comparing [redacted] Further, many buildings have been removed from the support area for this installation in later photographic coverage.

25X1

4. It is believed that the Soviets may have intended to build an ICBM site at this location; however, all photo evidence indicates that construction ceased and the site was never completed.

The Committee considers that the evidence at this time is insufficient to make a positive assessment as to the specific purpose of this installation. One member believes this is probably a completed hard ICBM site, two members believe it is possible, and three believe it is undetermined. Should this installation be a completed hard site, the Soviets have probably practiced deception and/or camouflage.

SOVIET MRBM/IRBM DEPLOYMENT

No new operational sites were identified on [redacted] However, reevaluation of the Kremovo MRBM complex has resulted in the judgment that a probable soft launch site is located at Kremovo and Lyalichi, respectively. Both sites are considered complete. [redacted]

25X1

[redacted] These facilities are also apparent at other confirmed MRBM sites. Other features at these two sites are not as clearly identifiable; however, when [redacted] evidence was considered together with the photographic evidence, the Deployment Working Group unanimously accepted both installations as probable MRBM sites. See Figure 4 for locations of deployed MRBM/IRBM complexes. Typical configurations of MRBM/IRBM launch sites are shown in Figure 5.

25X1

Fixed Field-Type MRBM Sites

Documentary evidence [redacted] and [redacted] evidence [redacted] indicate that Soviet MRBM deployment concepts include fixed field-type sites providing alternate launch positions. The first site of this category was identified [redacted] near the Anastasyevka complex. Subsequently, seven additional sites have been identified, and all but one are in the vicinity of confirmed MRBM complexes. These sites (Figure 6) generally consist of from one to four launch pads, each in a cleared area. Existing roads have been utilized as approaches to the sites and minor improvements, particularly on turns, have been made. Support facilities have not been identified at the field-type sites. The eight fixed field-type sites identified to date, and the MRBM complexes with which they are associated, are as follows:

25X1

25X

25X1

25X1

Anastasyevka (Anastasyevka Complex)
48-32-15N 135-31-45E - 4 Pads

Gelvonai (Ukmerge Complex)
55-07-15N 24-43-45E - 1 Pad

Khmelnitskiy (Derazhnya Complex)
49-25-00N 27-06-30E - 2 Pads

Sivtsy (Postavy Complex)
55-09-30N 26-52-45E - 1 Pad

Smorgon (Smorgon Complex)
54-34-45N 26-21-30E - 2 Pads

Tulskaya (Maykop Complex)
44-31-15N 40-14-15E - 3 Pads and 1 Prob Pad

Vainode (probably abandoned) (Nigrande Complex)
56-28-15N 21-51-00E - 2 Pads

Yarmolinty (None)
49-12-00N 26-46-45E - 4 Pads

25X1

Approved For Release 2003/09/26 : CIA-RDP78T04757A000300010009-7

Approved For Release 2003/09/26 : CIA-RDP78T04757A000300010009-7

TOP SECRET

25X1



25X1

25X1

25X1

NPIC H-6169 (12/63)

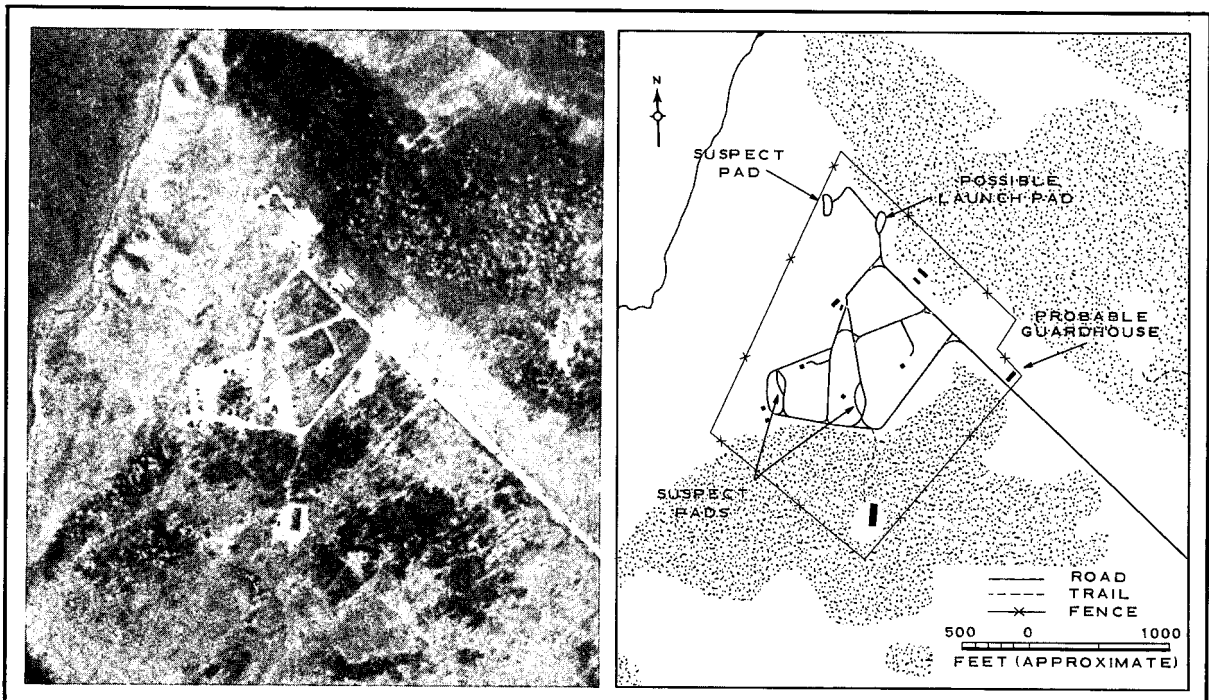
FIGURE 6. FIXED FIELD-TYPE MRBM SITES.

Possible MRBM Training Site, Sovetskaya Gavan

Since [redacted] a total of seven MRBM firings to the Kamchatka impact area has been detected. All originated in the Sovetskaya Gavan area, but [redacted] coverage failed to reveal any identifiable launch area from which the missiles could have been launched. [redacted] however,

revealed a possible launch facility (Figure 7) near the Sovetskaya Gavan/Vanino Airfield. Backtracks of several of the missile firings terminate in the vicinity of this installation. This secured facility consists of an irregular road pattern and contains one possible and three suspect pads. This facility was not present on

25X1



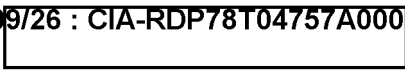
NPIC H-6170 (12/63)

FIGURE 7. POSSIBLE MRBM TRAINING SITE, SOVETSKAYA GAVAN.

TOP SECRET

25X1

~~TOP SECRET~~



25X1

25X1 and first
 25X1 appeared on
 25X1 The site is located about 900
 miles from the Kamchatka impact area. We are
 tentatively evaluating this facility as a training
 site.

ing completion and will be discussed in the 1 Feb-
 ruary 1964 revision of this publication. Mean-
 while, we are continuing to carry two launchers
 at both MRBM and IRBM hard sites. Additionally,
 we are currently assessing evidence of possible
 attempts at camouflage or deception at some of
 these sites. Information will be incorporated in
 subsequent reporting when the analysis is com-
 pleted.

MRBM/IRBM Hard Sites

Our analysis to determine the number of
 launch silos at hard MRBM/IRBM sites is near-

TABLE 1. SUMMARY OF ESTIMATED STATUS OF IDENTIFIED ICBM AND MRBM/IRBM LAUNCHERS AT DEPLOYED COMPLEXES*

Type	Sites	Launchers	Operational	U/C	Type	Sites	Launchers	Operational	U/C
ICBM					MRBM/IRBM				
I	3	4	4	0	I	84	336	336	0
II A	5	10	10	0	II	53	212	212	0
II B	29	58	58	0	III	14	56	56	0
II C	8	16	14	2	IV (MRBM)	21	42	40	2
II D	29	58	36	22	IV (IRBM)	20	40	24	16
III A	22	66	24	42					
III B	4	12	0	12					
TOTAL	100	224	146	78	TOTAL	192	686	668	18

*See Tables 2 and 3 for details. Figures include a third launch silo at Type III ICBM sites.

~~TOP SECRET~~



25X1

TABLE 2. SUMMARY EVALUATION OF SOVIET ICBM DEPLOYMENT

Location *	BE Number	Coordinates	Type of Site	Number of Launchers		Site Negated		First Coverage		Latest Coverage		Stage of Const on Last Usable Coverage			Estimated Quarter Site Operational				Estimated Status	
				Soft	Hard	Date	Msn	Date	Msn	Date	Msn	Date	Msn	Const	1st	2nd	3rd	4th		
DROVYANAYA																				
Site A (1)		51-24N 113-00E	II B	2													63			Operational
Site B (2)		51-23N 113-07E	IIIA		3												64			U/C
Site C (3)		51-20N 113-01E	II D	2															63	Operational
Site D (4)		51-28N 113-04E	II D	2																U/C
Site E (5)		51-22N 112-50E	IIIA		3														64	U/C
Site F (6)		51-19N 112-53E	IIIA		3															U/C
GLADKAYA																				
Site A (3)		56-20N 92-20E	II D	2																63
Site B (2)		56-25N 92-25E	II D	2																63
Site C (4)		56-30N 91-58E	IIIA		3															65
Site D (5) Possible		56-20N 92-13E	Undet																	65
ITATKA																				
Site A (1)		56-58N 85-33E	II B	2																62
Site B (2)		57-01N 85-39E	II B	2																63
Site C (3)		56-54N 85-39E	II D	2																63
KOSTROMA																				
Site A (1)		58-02N 41-21E	II B	2																62
Site B (2)		58-02N 41-07E	II B	2																62
Site C (3)		57-59N 41-09E	II B	2																62
Site D (4)		58-05N 41-40E	II B	2																63
Site E (5)		57-57N 41-13E	IIIA		3															63
Site F (6)		57-55N 41-09E	II D	2																63
Site G (7)		58-06N 41-34E	II D	2																64
Site H (8) Probable		58-03N 41-33E	IIIA		3															65
KOZELSK																				
Site A (3)		53-54N 35-44E	II C	2																63
Site B (2)		53-48N 35-47E	II C	2																63
Site C (1)		53-46N 35-41E	IIIB		3															65
Site D (4)		53-52N 35-51E	II C	2																63
Site E (5)		53-51N 35-41E	IIIB		3															64
Site F (6)		53-41N 35-39E	II B		3															64
NOVOSIBIRSK																				
Site A (2)		55-19N 83-10E	II B	2																63
Site B (1)		55-19N 83-01E	IIIA		3															63
Site C (3)		55-23N 82-56E	IIIA		3															64
Site D (4)		55-21N 83-14E	II D	2																63
OLOVYANNAYA																				
Site A (1)		50-54N 115-49E	IIIA		3															64
Site B (2)		50-55N 115-44E	IIIA		3															65
Site C (3) Probable		51-01N 115-57E	IIIA		3															65
OMSK																				
Site A (1)		55-09N 73-38E	II B		3															64
Site B (3) Possible		55-11N 73-33E	Undet																	64
PERM																				
Site A (1)		57-41N 56-13E	II B	2																62
Site B (2)		57-42N 55-57E	II B	2																62
Site C (3)		57-37N 56-07E	II B	2																63

TABLE 2. (Continued)

Location*	BE Number	Coordinates	Type of Site	Number of Launchers		Site Negated		First Coverage		Latest Coverage		Stage of Const on Last Usable Coverage			Estimated Quarter Site Operational				Estimated Status	
				Soft	Hard	Date	Msn	Date	Msn	Date	Msn	Date	Msn	Const	1st	2nd	3rd	4th		
PERM (Continued)																				
Site D (5)		57-49N 55-49E	II D	2															63	Operational
Site E (6)		57-49N 56-00E	II D	2																U/C
Site F (4)		57-41N 56-04E	III A		3															U/C
PLESETSK																				
Site 1 (1)		62-55N 40-27E	I	2																Operational
Site 2 (2)		62-56N 40-32E	I	1																Operational
Site 3 (3)		62-57N 40-41E	I	1														60		Operational
Site A (4)		62-58N 40-47E	II A	2																Operational
Site B (3)		63-03N 40-58E	II B	2															62	Operational
Site C (6)		63-01N 40-52E	III A		3															Operational
Site D (8)		62-53N 40-50E	II C	2																Operational
Site E (7)		62-50N 40-35E	II C	2																Operational
SHADRINSK																				
Site A (1)		56-09N 63-52E	III A		3															Operational
Site B (2)		56-10N 64-03E	III A		3															U/C
Site C (3)		56-07N 63-57E	III A		3															U/C
SVOBODNY																				
Site A (3)		51-55N 128-10E	II B	2																Operational
Site B (1)		51-49N 128-19E	II B	2																Operational
Site C (2)		51-53N 128-23E	II B	2																Operational
Site D (4)		52-00N 128-06E	II D	2																Operational
Site E (6)		51-43N 128-00E	II D	2																Operational
Site F (5)		51-52N 128-13E	II D	2																Operational
TEYKOVO																				
Site A (1)		56-55N 40-27E	II B	2																Operational
Site B (2)		56-56N 40-33E	II B	2																Operational
Site C (3)		56-55N 40-17E	II B	2																Operational
Site D (4)		56-58N 40-40E	II D	2																Operational
Site E (5)		56-48N 40-16E	II D	2																Operational
Site F (6)		56-54N 40-22E	II D	2																U/C
Site G (7)		56-46N 40-02E	II D	2																U/C
TYUMEN																				
Site A (3)		56-52N 65-35E	II C	2																Operational
Site B (1)		56-48N 65-38E	II C	2																Inactive
Site C (2)		56-51N 65-28E	II C	2																Operational
VERKHNYAYA SAL																				
Site A (2)		58-09N 60-16E	II B	2																Operational
Site B (1)		58-06N 60-22E	II A	2																Operational
Site C (3)		58-10N 60-26E	II A	2																Operational
Site D (4)		58-12N 60-34E	II B	2																Operational
Site E (5)		58-14N 60-54E	II B	2																Operational
Site F (7)		58-14N 60-41E	III A		3															Operational
Site G (8)		58-13N 60-49E	III A		3															Operational
Site H (9)		58-05N 60-13E	II D	2																Operational
Site I (10)		58-07N 60-33E	II D	2																Operational
YEDROVO																				
Site A (2)		57-48N 33-36E	II B	2																Operational
Site B (1)		57-48N 33-14E	II B	2																Operational
Site C (5)		57-49N 33-08E	II D	2																U/C

25X1

TOP SECRET

25X1
25X1
25X1

TOP SECRET

25X1

TABLE 2. (Continued)

Location*	BE Number	Coordinates	Type of Site	Number of Launchers		Site Negotiated		First Coverage		Latest Coverage		Stage of Const on Last Usable Coverage			Estimated Quarter Site Operational				Estimated Status		
				Soft	Hard	Date	Msn	Date	Msn	Date	Msn	Date	Msn	Const	1st	2nd	3rd	4th			
YEDROVO																					
Site D (4)		57-48N 33-29E	II D	2															63	Operational	
Site E (8)		57-52N 33-17E	III A		3														63	Operational	
Site F (6)		57-43N 33-06E	II D	2															63	Operational	
Site G (7)		57-47N 33-02E	II D	2															64	Operational	
Site H (9)		57-49N 33-08E	III A		3															U/C	
Site I (3)		57-52N 33-27E																		Undetermined	
Undetermined 1/																					
YOSHKAR-OLA																					
Site A (1)		56-35N 48-10E	II B	2															62	Operational	
Site B (2)		56-35N 48-18E	II B	2															62	Operational	
Site C (3)		56-32N 48-25E	II B	2															63	Operational	
Site D (4)		56-32N 48-19E	II D	2															63	Operational	
Site E (5)		56-34N 48-14E	II D	2															63	U/C	
Site F (6)		56-37N 48-22E	II D	2															64	U/C	
YURYA																					
Site A (2)		59-09N 49-33E	II A	2																61	Operational
Site B (1)		59-08N 49-41E	II A	2																61	Operational
Site C (3)		59-12N 49-28E	II B	2																62	Operational
Site D (4)		59-15N 49-24E	II B	2																62	Operational
Site E (5)		59-22N 49-17E	III A		3															62	Operational
Site F (7)		59-21N 49-13E	II B	2																62	Operational
Site G (8)		59-04N 49-52E	III A		3															63	Operational
Site H (8)		59-11N 49-46E	II D	2																63	Operational
Site I (11)		59-20N 49-26E	II D	2																64	U/C
Site J (9)		59-06N 49-45E	II D	2																64	U/C
Site K (10)		59-13N 49-19E	III A																		Undetermined
Possible																					
SUB TOTALS				100	146	78															
TYURATAM																					
Complex A (1a)		45-55N 63-20E	I	1																	Operational
Complex A2 (1b)		45-55N 63-20E	I	1																	Operational
Complex B (2)		45-59N 63-33E	I	1																	Operational
Complex C1 (3a)		45-48N 63-39E	II	1																	Operational
C2 (3b)		45-48N 63-39E	II	1																	Operational
C3 (3c)		45-48N 63-39E	II	1																	Operational
Complex D1 (4a)		45-59N 63-57E	III A		3																Operational
D2 (4b)		45-59N 63-57E	III		3																U/C
Complex E (6)		45-58N 63-12E	II C		3																Operational
Complex F (5)		46-02N 63-06E	IIIB Prototype		3																Operational
Complex G1 (7a)		46-03N 62-56E	Undet	2																	U/C
G2 (7b)		46-03N 62-56E	Undet	2																	U/C
Complex H (8)		45-59N 63-42E	Undet	2																	U/C
TOTALS				111	161	87															

*TDI site designators are indicated in parentheses.
1/ See Introduction, page 3.

25X1

TOP SECRET

25X1

25X1
25X1

TOP SECRET

25X1

25X1

TABLE 3. SUMMARY EVALUATION OF SOVIET MRBM/IRBM DEPLOYMENT

LOCATION*	BE NUMBER	COORDINATES	TYPE	NO. OF PADS/ LAUNCHERS	DATE OF LATEST PHOTOGRAPHY	ESTIMATED CONSTR STATUS
AKHTYRKA Launch Complex						
Launch Site No 1 (AKHTYRKA 1)		50-15-45N 34-50-15E	II	4		Complete
Launch Site No 2 (AKHTYRKA 2)		50-22-00N 34-57-15E	II	4		Complete
ALUKSNE Launch Complex						
Launch Site No 1 (LEJASCIEMS)		57-21-15N 26-44-45E	II	4		Complete
Launch Site No 2 (RUSKI)		57-25-15N 26-50-00E	II	4		Complete
Launch Site No 3 (LEJASCIEMS 2)		57-13-00N 26-33-30E	IV	2		Complete
ANASTASYEVKA Launch Complex						
Launch Site No 1 (ANASTASYEVKA 1)		48-35-00N 135-38-45E	II	4		Complete
Launch Site No 2 (ANASTASYEVKA 2)		48-36-45N 135-41-30E	II	4		Complete
AKTYUBINSK Launch Complex						
Launch Site No 1 (KARAKHOBDA 1)		49-57-45N 56-51-15E	IV	2		Early Mid
Launch Site No 2 (PETROVSKIY 1)		50-00-30N 56-58-15E	IV	2		
BALTA Launch Complex						
Launch Site No 1 (BALTA 1)		48-01-45N 29-33-30E	II	4		Complete
Launch Site No 2 (BALTA 2)		48-07-45N 29-34-30E	II	4		Complete
BARANO-ORENBURGSKOYE Complex						
Launch Site No 1 (SOFIYE ALEKSEYEVSKOYE)		44-15-30N 131-23-00E	I	4		Complete
Launch Site No 2 (BARANO-ORENBURGSKOYE)		44-19-45N 131-30-15E	I	4		Complete
BELOKOROVICHI Launch Complex						
Launch Site No 1 (OLEVSK 1)		51-08-45N 28-03-30E	I	4		Complete
Launch Site No 2 (OLEVSK 2)		51-10-30N 28-00-15E	I	4		Complete
Hard Launch Site (RUDNYA ZLOTINSKAYA)		51-04-30N 28-07-00E	IV	2		Complete
BELOMORSK Launch Complex						
Launch Site No 1 (RAMOYE)		64-26-15N 34-18-15E	III	2		Complete
BORSHCHEV Launch Complex						
Launch Site No 1 (SKALA PODOLSKAYA 1)		48-51-00N 26-08-30E	I	4		Complete
Launch Site No 2 (SKALA PODOLSKAYA 2)		48-53-15N 26-03-30E	I	4		Complete
BREST Launch Complex						
Launch Site No 1 (BREST 1)		51-49-00N 24-01-00E	II	4		Complete
Launch Site No 2 (BREST 2)		51-51-45N 24-01-45E	II	4		Complete
BRODY Launch Complex						
Launch Site No 1 (BRODY 2)		50-13-15N 25-05-00E	I	4		Complete
Launch Site No 2 (BERESTECHKO)		50-20-15N 25-05-30E	I	4		Complete
Hard Launch Site (BRODY 1)		50-06-00N 25-12-00E	IV	2		Complete
BYKHOV Launch Complex						
Launch Site No 1 (POSSIBLE) (SLEDYUKI)		53-41-30N 30-20-30E	II	4		Complete
DERAZHNYA Launch Complex						
Launch Site No 1 (DERAZHNYA 1)		49-21-00N 27-26-30E	II	4		Complete
Launch Site No 2 (DERAZHNYA 2)		49-26-30N 27-29-00E	II	4		Complete
Hard Launch Site (KHMELNITSKIY)		49-24-45N 27-08-45E	IV	2		Complete
DISNA Launch Complex						
Launch Site No 1 (DISNA)		55-35-15N 28-15-45E	I	4		Complete
Launch Site No 2 (ZELKI)		55-36-00N 28-24-30E	I	4		Complete
Launch Site No 3 (BORKOVICHI)		55-42-00N 28-27-15E	II	4		Complete
DOLINA Launch Complex						
Launch Site No 1 (DOLINA 1)		49-04-00N 24-03-30E	I	4		Complete
Launch Site No 2 (DOLINA 2)		49-06-15N 24-08-30E	I	4		Complete
Hard Launch Site (BOLEKHOV)		49-06-45N 23-51-15E	IV	2		Complete

25X1

TOP SECRET

25X1
25X1
25X1

TOP SECRET

TABLE 3. (Continued)

LOCATION*	BE NUMBER	COORDINATES	TYPE	NO. OF PADS/ LAUNCHERS	DATE OF LATEST PHOTOGRAPHY	ESTIMATED CONSTR. STATUS
DROGOBYCH Launch Complex						
Launch Site No 1 (MEDEXITSA)		49-22-00N 23-45-30E	I	4		Complete
Launch Site No 2 (DROGOBYCH)		49-24-45N 23-34-45E	I	4		Complete
Hard Launch Site (STRYY)		49-16-30N 23-43-00E	IV	2		Complete
DYATLOVO Launch Complex						
Launch Site No 1 (DYATLOVO)		53-33-00N 25-16-30E	I	4		Complete
Launch Site No 2 (BEREZOVKA)		53-35-30N 25-17-45E	I	4		Complete
Launch Site No 3 (ZBLYANY)		53-36-15N 25-26-30E	II	4		Complete
GELLI Launch Complex						
Hard Launch Site No 1 (KAKASHURA)		42-39-15N 47-27-00E	IV	2		Complete
Hard Launch Site No 2 (GELLI)		42-45-45N 47-28-15E	IV	2		Complete
Hard Launch Site No 3 (PARAUL)		42-47-45N 47-23-00E	IV	2		Complete
GOMEL Launch Complex						
Launch Site No 1 (BORKHOV 1)		52-18-45N 30-43-00E	II	4		Complete
Launch Site No 2 (BORKHOV 2)		52-24-45N 30-38-30E	II	4		Complete
GRANOV Launch Complex						
Launch Site No 1 (GRANOV 1)		48-56-15N 29-30-30E	III	4		Complete
Hard Launch Site (GRANOV 2)		48-49-30N 29-29-15E	IV	2		Mid
Hard Launch Site (KALNIK)		48-59-30N 29-22-15E	IV			Mid
GRESK Launch Complex						
Launch Site No 1 (GRESK 1)		53-14-50N 27-42-15E	I	4		Complete
Launch Site No 2 (GRESK 2)		53-17-00N 27-41-15E	I	4		Complete
Launch Site No 3 (URECHYE)		53-11-30N 27-58-30E	II	4		Complete
GROZNYI Launch Complex						
Launch Site No 1 (SUNZHENSKOYE)		43-08-00N 44-55-00E	I	4		Complete
Launch Site No 2 (NESTEROVSKAYA)		43-12-00N 44-57-00E	I	4		Complete
Launch Site No 3 (ACHKHOY-MARTIN)		43-10-00N 45-11-00E	IV	2		Complete
GUSEV Launch Complex						
Launch Site No 1 (GUSEV 1)		54-41-30N 22-05-15E	I	4		Complete
Launch Site No 2 (GUSEV 2)		54-44-15N 22-04-15E	I	4		Complete
GVARDEYSK Launch Complex						
Launch Site No 1 (GVARDEYSK 2)		54-40-30N 21-08-00E	I	4		Complete
Launch Site No 2 (GVARDEYSK 1)		54-45-15N 21-09-15E	I	4		Complete
JELGAVA Launch Complex						
Launch Site No 1 (IECAVA 1)		56-35-30N 24-03-45E	II	4		Complete
Launch Site No 2 (IECAVA 2)		56-39-45N 24-08-00E	II	4		Complete
Hard Launch Site (IECAVA 3)		56-33-15N 24-20-30E	IV	2		Complete
JONAVA Launch Complex						
Launch Site No 1 (KARMEJAVA)		54-57-15N 24-06-00E	II	4		Complete
Launch Site No 2 (JONAVA)		55-01-00N 24-14-15E	II	4		Complete
KAMENETS-PODOLSKIY Launch Complex						
Launch Site No 1 (KAMENETS-PODOLSKIY)		48-51-15N 26-42-30E	II	4		Complete
Launch Site No 2 (DUNAYEVTSY)		48-55-15N 26-59-15E	II	4		Complete
KIVERTSY Launch Complex						
Launch Site No 1 (KIVERTSY 1)		50-52-45N 25-30-45E	I	4		Complete
Launch Site No 2 (KIVERTSY 2)		50-57-00N 25-36-15E	I	4		Complete
Launch Site No 3 (TROSTYANETS)		50-58-30N 25-39-15E	II	4		Complete
KONKOVICHI Launch Complex						
Launch Site No 1 (PETRIKOV)		52-10-30N 28-24-30E	I	4		Complete
Launch Site No 2 (KONKOVICHI)		52-15-30N 28-37-45E	I	4		Complete

25X1

TOP SECRET

25X1

- 13 -

25X1
25X1

TOP SECRET

25X1

25X1

TABLE 3. (Continued)

LOCATION*	BE NUMBER	COORDINATES	TYPE	NO. OF PADS/ LAUNCHERS	DATE OF LATEST PHOTOGRAPHY	ESTIMATED CONSTR. STATUS
KOROSTEN Launch Complex						
Launch Site No 1 (KOROSTEN 1)		50-51-45N 28-18-45E	II	4		Complete
Launch Site No 2 (KOROSTEN 2)		50-52-30N 28-30-30E	II	4		Complete
KOZHANOVICHI Launch Complex						
Launch Site No 1 (KOZHANOVICHI 1)		52-10-30N 27-51-30E	I	4		Complete
Launch Site No 2 (KOZHANOVICHI 2)		52-11-45N 27-48-30E	I	4		Complete
KRASKINO Launch Complex						
Launch Site No 1 (KRASKINO)		42-44-00N 130-40-45E	II	4		Complete
KRASNOZHAMENSK Launch Complex						
Launch Site No 1 (VIESVILLE)		55-01-30N 22-23-00E	I	4		Complete
Launch Site No 2 (RAGNIT)		55-01-30N 22-11-30E	I	4		Complete
KREMOVO LAUNCH COMPLEX						
Launch Site No 1 (PROBABLE) (KREMOVO)			I	4		Complete
Launch Site No 2 (PROBABLE) (LYALICHI)			I	4		Complete
KROLEVETS Launch Complex						
Launch Site No 1 (KROLEVETS 1)		51-36-45N 33-28-45E	III	4		Complete
Launch Site No 2 (KROLEVETS 2)		51-40-45N 33-29-30E	III	4		Complete
Launch Site No 3 (KROLEVETS 3)		51-43-45N 33-43-45E	III	4		Complete
KURGANCHA Launch Complex						
Launch Site No 1 (KURGANCHA 1)		39-37-15N 65-54-00E	I	4		Complete
Launch Site No 2 (KURGANCHA 2)		39-37-30N 65-57-15E	I	4		Complete
Hard Launch Site (TYM)		39-35-15N 65-42-15E	IV	2		Complete
LEBEDIN Launch Complex						
Launch Site No 1 (LEBEDIN 1)		50-33-00N 34-26-00E	III	4		Complete
Launch Site No 2 (LEBEDIN 2)		50-35-45N 34-24-45E	III	4		Complete
Launch Site No 3		50-38-00N 34-27-30E	III	4		Complete
LIDA Launch Complex						
Launch Site No 1 (LIDA 1)		53-47-00N 25-21-30E	I	4		Complete
Launch Site No 2 (LIDA 2)		53-57-00N 25-28-00E	I	4		Complete
LUTSK Launch Complex						
Launch Site No 1 (LUTSK 1)		50 46 45N 25 01 15E	I	4		Complete
Launch Site No 2 (LUTSK 2)		50-50-15N 25-03-00E	I	4		Complete
Hard Launch Site (VLADIMIR-VOLYNSKIY)		50-48-30N 24-42-30E	IV	2		Complete
MARINA GORKA Launch Complex						
Launch Site No 1 (MARINA GORKA)		53-26-30N 27-45-45E	II	4		Complete
MAYKOP Launch Complex						
Launch Site No 1 (KURDZHIPSKAYA)		44-31-45N 40-00-45E	II	4		Complete
Hard Launch Site (SHIRVANSKAYA)		44-25-30N 39-54-00E	IV	2		Complete
MOLOS KOVITSY Launch Complex						
Launch Site No 1 (MOLOS KOVITSY 1)		59-28-45N 29-06-00E	II	4		Complete
Launch Site No 2 (MOLOS KOVITSY 2)		59-29-30N 29-12-30E	II	4		Complete
Hard Launch Site (GURELEVO)		59-25-30N 28-52-30E	IV	2		Complete
MUKACHEVO Launch Complex						
Launch Site No 1 (MUKACHEVO 1)		48-19-00N 22-31-00E	I	4		Complete
Launch Site No 2 (MUKACHEVO 2)		48-19-30N 22-37-45E	I	4		Complete
NADVORNAYA Launch Complex						
Launch Site No 1 (PARYSHCHE)		48-38-00N 24-42-00E	I	4		Complete
Launch Site No 2 (NOVA VES)		48-39-30N 24-48-15E	I	4		Complete
Hard Launch Site (OTYNYA)		48-47-45N 24-50-15E	IV	2		Complete

25X1
25X1
25X1

TOP SECRET
TOP SECRET
TOP SECRET

25X1

TOP SECRET
TOP SECRET
TOP SECRET

TABLE 3. (Continued)

LOCATION*	BE NUMBER	COORDINATES	TYPE	NO. OF PADS/ LAUNCHERS	DATE OF LATEST PHOTOGRAPHY	ESTIMATED CONSTR. STATUS
NIGRANDE Launch Complex						
Launch Site No 1 (NIGRANDE)		56-31-00N 22-02-15E	III	4		Complete
Hard Launch Site (SKRUNDA)		56-35-45N 21-49-15E	IV	2		Complete
Hard Launch Site (VAINODE)		56-28-30N 21-50-15E	IV	2		Mid
NOVOSYSOYEVKA Launch Complex						
Launch Site No 1 (NOVOSYSOYEVKA)		44-11-30N 133-26-00E	III	4		Complete
Hard Launch Site		44-07-45N 133-27-30E	IV	2		Complete
Hard Launch Site (POSSIBLE)		44-07-45N 133-25-45E	IV			Mid
OSTROG Launch Complex						
Launch Site No 1 (OSTROG 1)		50-14-30N 26-44-00E	I	4		Complete
Launch Site No 2 (OSTROG 2)		50-17-15N 26-41-30E	I	4		Complete
OSTROV Launch Complex						
Launch Site No 1 (ASANOVSHCHINA)		57-32-45N 28-12-00E	I	4		Complete
Launch Site No 2 (SHEVELEVO)		57-37-30N 28-12-45E	I	4		Complete
Hard Launch Site (REDKINO)		57-24-30N 28-26-45E	IV	2		Mid
PAPLAKA Launch Complex						
Launch Site No 1 (PAPLAKA 1)		56-24-00N 21-15-30E	I	4		Complete
Launch Site No 2 (PAPLAKA 2)		56-25-30N 21-15-30E	I	4		Complete
PERVOMAYSK Launch Complex						
Hard Launch Site No 1 (KAMENNYI MOST)		47-58-30N 30-53-00E	IV	2		Complete
Hard Launch Site No 2 (SEMENOVKA 1)		47-58-45N 30-59-30E	IV	2		Complete
Hard Launch Site No 3 (SEMENOVKA 2)		47-53-45N 30-57-30E	IV	2		Late
PINSK Launch Complex						
Launch Site No 1 (IVANOVO)		52-10-45N 25-41-00E	I	4		Complete
Launch Site No 2 (MOTOL)		52-12-45N 25-44-45E	I	4		Complete
POLOTSK Launch Complex						
Launch Site No 1 (POLOTSK 1)		55-22-45N 28-44-00E	II	4		Complete
Launch Site No 2 (POLOTSK 2)		55-24-15N 28-33-30E	II	4		Complete
POSTAVY Launch Complex						
Launch Site No 1 (POSTAVY)		55-09-45N 26-54-15E	II	4		Complete
Launch Site No 2 (KOZYANY)		55-20-30N 26-51-30E	II	4		Complete
Hard Launch Site (POSTAVY 2)		55-06-15N 27-00-15E	IV	2		Late
PRUZHANY Launch Complex						
Launch Site No 1 (PRUZHANY 1)		52-30-30N 24-08-15E	II	4		Complete
Launch Site No 2 (PRUZHANY 2)		52-33-00N 24-07-00E	II	4		Complete
RAKVERE Launch Complex						
Launch Site No 1 (SIMUNA)		59-08-30N 26-26-30E	II	4		Complete
Launch Site No 2 (VAIKE MAARJA)		59-11-30N 26-20-45E	II	4		Complete
RISTI Launch Complex						
Launch Site No 1 (RISTI 1)		59-04-00N 24-03-15E	I	4		Complete
Launch Site No 2 (RISTI 2)		59-06-30N 24-06-30E	I	4		Complete
ROZHDESTVENKA Launch Complex						
Launch Site No 1 (ROZHDESTVENKA)		45-47-15N 133-43-15E	II	4		Complete
RUZHANY Launch Complex						
Launch Site No 1 (KRUPA 1)		52-48-15N 24-42-00E	II	4		Complete
Launch Site No 2 (KRUPA 2)		52-49-30N 24-45-30E	II	4		Complete
SARY OZEK Launch Complex						
Launch Site No 1 (KARA BABAU 1)		44-32-00N 77-46-45E	III	4		Complete
Hard Launch Site 2 (KARA BABAU 2)		44-31-00N 77-58-45E	IV	2		Complete
Hard Launch Site 3 (KARA BABAU 3)		44-31-00N 77-43-00E	IV	2		Late

25X1

TOP SECRET

25X1
25X1

TOP SECRET

25X1

25X1

TABLE 3. (Continued)

LOCATION*	BE NUMBER	COORDINATES	TYPE	NO. OF PADS/ LAUNCHERS	DATE OF LATEST PHOTOGRAPHY	ESTIMATED CONSTR STATUS
SATEIKIAI Launch Complex						
Launch Site No 1 (SALANTAI 1)		55-59-45N 21-38-00E	I	4		Complete
Launch Site No 2 (SALANTAI 2)		56-02-15N 21-41-30E	I	4		Complete
Hard Launch Site (ZEMAIGIU KALVARIJA)		56-01-30N 21-53-30E	IV	2		Complete
SIMFEROPOL Launch Complex						
Launch Site No 1 (MAZANKA 1)		44-54-15N 34-20-00E	I	4		Complete
Launch Site No 2 (BALKI 1)		44-57-15N 34-25-45E	I	4		Complete
SLONIM Launch Complex						
Launch Site No 1 (BYTEN 1)		52-52-30N 25-21-00E	I	4		Complete
Launch Site No 2 (BYTEN 2)		52-55-30N 25-21-30E	I	4		Complete
SMORGON Launch Complex						
Launch Site No 1 (SMORGON 1)		54-31-45N 26-17-30E	III	4		Complete
Launch Site No 2 (SMORGON 3)		54-26-15N 26-23-15E	III	4		Complete
Hard Launch Site (SMORGON 2)		54-26-15N 26-18-15E	IV	2		Complete
SOKAL Launch Complex						
Launch Site No 1 (SOKAL 1)		50-23-00N 24-18-30E	I	4		Complete
Launch Site No 2 (SOKAL 2)		50-27-30N 24-20-45E	I	4		Complete
Hard Launch Site (SOKAL 3)		50-20-15N 24-26-00E	IV	2		Complete
SOVETSK Launch Complex						
Launch Site No 1 (SLAVSK 1)		54-59-15N 21-37-15E	I	4		Complete
Launch Site No 2 (SLAVSK 2)		55-00-00N 21-29-00E	I	4		Complete
SUCHAN Launch Complex						
Launch Site No 1 (NOVITSKOYE)		43-01-45N 133-17-15E	I	4		Complete
Launch Site No 2 (SEVERNYY SUCHAN)		43-10-00N 133-20-00E	I	4		Complete
TAURAGE Launch Complex						
Launch Site No 1 (TAURAGE 3)		55-05-15N 22-19-30E	I	4		Complete
Launch Site No 2 (TAURAGE 1)		55-10-15N 22-20-45E	I	4		Complete
TAYBOLA Launch Complex						
Hard Launch Site No 1 (TAYBOLA 1)		68-28-15N 33-15-15E	IV	2		Complete
Hard Launch Site No 2 (TAYBOLA 2)		68-30-00N 33-23-00E	IV	2		Complete
Hard Launch Site No 3 (TAYBOLA 3)		68-25-45N 33-29-30E	IV	2		Complete
TORVA Launch Complex						
Launch Site No 1 (TORVA 1)		57-56-30N 26-04-30E	I	4		Complete
Launch Site No 2 (TORVA 2)		57-59-15N 26-05-15E	I	4		Complete
Hard Launch Site (TSIRGULINA)		57-49-45N 26-12-15E	IV	2		Complete
UGOLNYY Launch Complex						
Launch Site No 1 (UGOLNYY)		64-46-15N 177-58-00E	II	4		Complete
UKMERGE Launch Complex						
Launch Site No 1 (VEPRIAD)		55-08-00N 24-38-45E	I	4		Complete
Launch Site No 2 (UKMERGE)		55-11-15N 24-42-30E	I	4		Complete
UMAN Launch Complex						
Launch Site No 1 (MOLODETSKOYE)		48-53-45N 30-27-45E	I	4		Complete
Launch Site No 2 (MANKOVKA)		48-57-45N 30-24-00E	I	4		Complete
Hard Launch Site (KISHENTSY)		49-00-15N 30-13-45E	IV	2		Complete
USOVO Launch Complex						
Launch Site No 1 (OVRUCH 1)		51-17-45N 28-16-00E	I	4		Complete
Launch Site No 2 (OVRUCH 2)		51-18-45N 28-10-30E	I	4		Complete
Launch Site No 3 (LIPNIKI)		51-12-00N 28-26-30E	II	4		Complete
UZHGOROD LAUNCH COMPLEX						
Launch Site No 1 (UZHGOROD)		48-33-30N 22-13-30E	II	4		Complete

25X1

25X1
25X1

TOP SECRET
25X1

25X1

TOP SECRET

25X1

- 16 -

TABLE 3. (Continued)

LOCATION*	BE NUMBER	COORDINATES	TYPE	NO. OF PADS. LAUNCHERS	DATE OF LATEST PHOTOGRAPHY	ESTIMATED CONSTR. STATUS
VORU Launch Complex						
Launch Site No 1 (VORU 1)		57-46-00N 26-47-15E	II	4		Complete
Launch Site No 2 (VORU 2)		57-49-15N 26-50-30E	II	4		Complete
VSELYUB Launch Complex						
Launch Site No 1 (VSELYUB 1)		53-46-15N 25-43-00E	I	4		Complete
Launch Site No 2 (VSELYUB 2)		53-48-00N 25-46-45E	I	4		Complete
YELSK Launch Complex						
Launch Site No 1 (YELSK 1)		51-42-00N 29-12-30E	I	4		Complete
Launch Site No 2 (YELSK 2)		51-47-00N 29-16-00E	I	4		Complete
ZAGARE Launch Complex						
Launch Site No 1 (ZAGARE 1)		56-23-15N 23-19-30E	I	4		Complete
Launch Site No 2 (ZAGARE 2)		56-29-00N 23-21-30E	I	4		Complete
Hard Launch Site (LIELELEJA)		56-24-00N 23-36-45E	IV	2		Complete
ZHITOMIR Launch Complex						
Launch Site No 1 (ZHITOMIR 1)		50-04-45N 28-16-15E	II	4		Complete
Launch Site No 2 (ZHITOMIR 2)		50-10-15N 28-16-00E	II	4		Complete
Launch Site No 3 (BERDICHEV)		50-05-45N 28-22-45E	II	4		Complete
ZHMERINKA Launch Complex						
Launch Site No 1 (GNIVAN)		49-09-15N 28-12-15E	II	4		Complete
Launch Site No 2 (ZHMERINKA)		49-10-30N 28-04-45E	II	4		Complete
Hard Launch Site (VINNITSA)		49-17-30N 28-20-15E	IV	2		Complete
ZHURAVKA Launch Complex						
Launch Site 1		54-36-30N 76-40-45E	III	4		Complete
ZNAMENSK Launch Complex						
Launch Site No 1 (ZNAMENSK 1)		54-33-00N 21-11-15E	I	4		Complete
Launch Site No 2 (ZNAMENSK 2)		54-35-30N 21-08-45E	I	4		Complete

*TDI site designators are indicated in parentheses.

25X1

TOP SECRET

- 17 -

25X1
25X1

TOP SECRET

X1

25X1

Approved For Release 2003/09/26 : CIA-RDP78T04757A000300010009-7

TOP SECRET

Approved For Release 2003/09/26 : CIA-RDP78T04757A000300010009-7

TOP SECRET