

TOP SECRET

Copy 106
1 Page



January 1965

25X1

PHOTOGRAPHIC INTERPRETATION REPORT

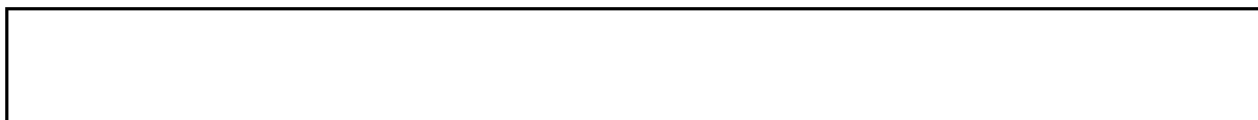
SURFACE-TO-AIR MISSILE (SAM) INSTALLATION SERIES



CIA



DIA



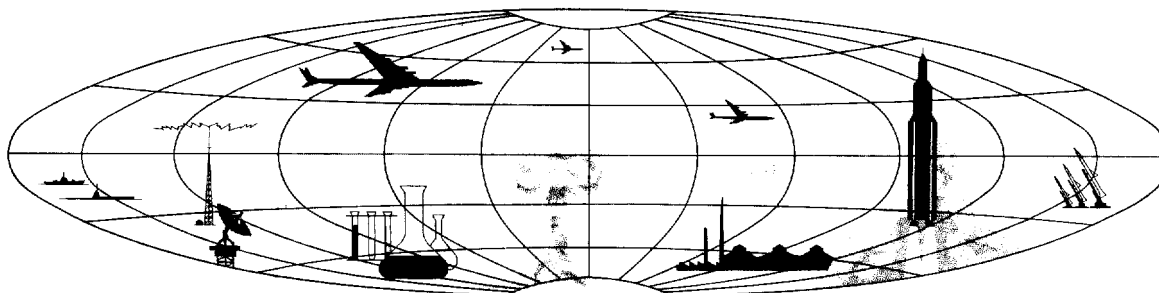
25X1

WARNING



25X1

NATIONAL PHOTOGRAPHIC INTERPRETATION CENTER



Declass Review by NIMA/DOD

TOP SECRET

25X1

TOP SECRET

Approved For Release 2004/01/14 : CIA-RDP78T04759A000600010069-6

25X1

25X1

NATIONAL PHOTOGRAPHIC INTERPRETATION CENTER			
INSTALLATION NAME	GEO COORDS	PUBLICATION DATE	
Artem Possible SAM Support Facility	43-23-12N 132-05-10E	January 1965	
USSR	NPIC TARGET NO		
	0291-1M		
	AD AREA	NPIC PROJECT	
	ZE-1-1	11523/64 (partial answer)	

25X1A

25X1D

25X1D

25X1

REFERENCES

USATC, Series 200, Sheet 0291-1A, 1st ed, Jun 58 (S); NPIC/R-926/64 (TS)

REQUIREMENT USIB-64; C-RR4-81,736

25X1

Location: 4.5 nm NW of Artem

Configuration: Irregular

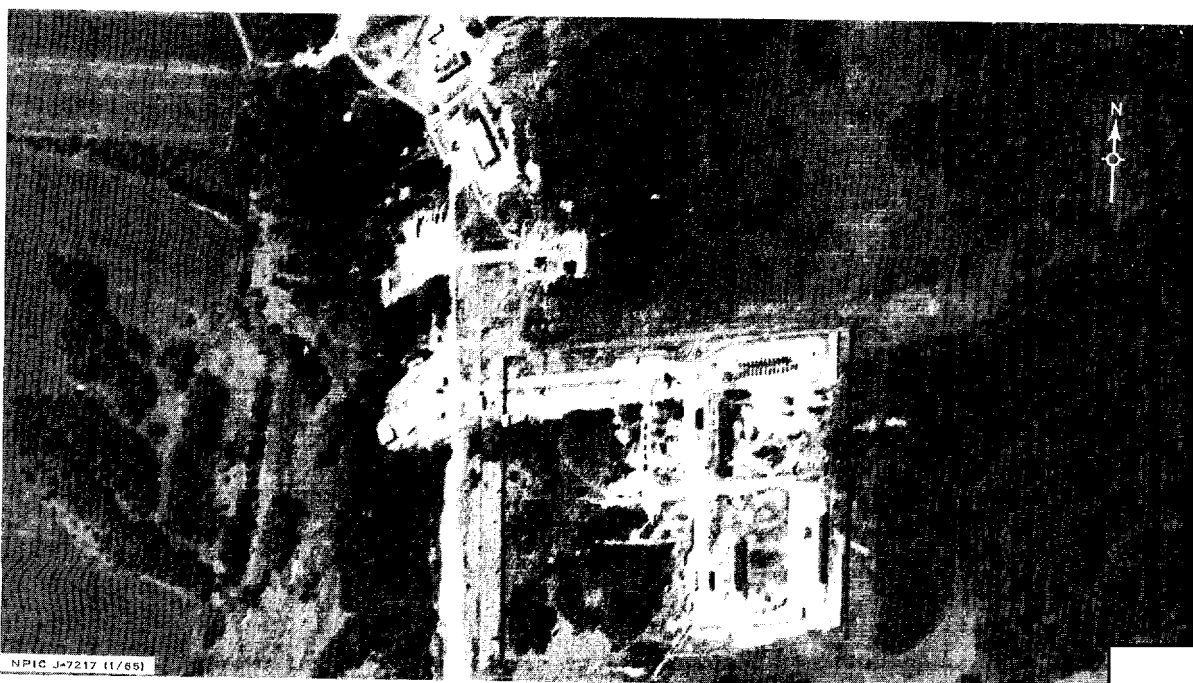
Status: Complete

Structures: 2 small drive-through buildings, 1 large building, 5 other buildings

Vehicles and Equipment: Approximately 31 unidentified vehicles

Security Measures: Facility is double fenced

Remarks: 3 probable GUIDELINE positions, with launchers and probable missiles, are located immediately W of the possible support facility



NPIC J-7217 (11/65)

25X1D

25X1

Approved For Release 2004/01/14 : CIA-RDP78T04759A000600010069-6

TOP SECRET

25X1

TOP SECRET

Approved For Release 2004/01/14 : CIA-RDP78T04759A000600010069-6

Approved For Release 2004/01/14 : CIA-RDP78T04759A000600010069-6

TOP SECRET