

~~TOP SECRET~~

Copy **108**
6 Pages

[Redacted]

25X

April 1965



PHOTOGRAPHIC INTERPRETATION REPORT

SOVIET MILITARY ORDER OF BATTLE NORTH CAUCASUS MD



CIA



DIA



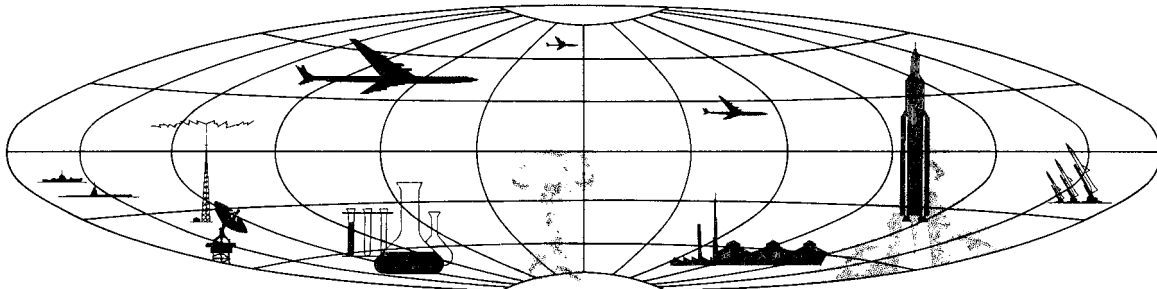
25X

WARNING



25X

NATIONAL PHOTOGRAPHIC INTERPRETATION CENTER



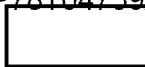
~~TOP SECRET~~

Declass Review by NIMA / DoD

GROUP 1
Excluded from automatic
downgrading and declassification

TOP SECRET

25X1



25X1

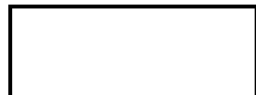
PREFACE

This report is one in a series on Soviet Ground Force and Logistic installations being prepared for a DIA/CIA Panel. The series is being coordinated, published and disseminated by NPIC. The photographic analysis is being performed by the NPIC Photographic Analysis Group, the CIA Photographic Intelligence Division (NPIC), and the Production Center 1P1a (DIA). The photographic analysis for this particular report was performed by the Production Center 1P1a.

In the interest of uniformity, the titles and letter designators for the facilities observed at these installations are identical with those appearing in the project requirement. When a specific facility is not observed both its title and letter designator are omitted in the report.

Titles and letter designators for the various facilities are as follows: (A) railroad service, (B) road service, (C) landing strips, (D) administrative and troop housing areas, (E) storage areas, (F) ammunition storage areas, (G) POL storage areas, (H) other buildings and facilities, (J) equipment storage/maintenance areas, (K) athletic fields, (L) small arms firing ranges, (M) driver training areas, (N) tank/assault gun firing ranges, (P) flat trajectory firing ranges, (Q) artillery emplacements (batteries), (R) infantry or combined arms field training areas or courses, (S) special training facilities, (T) unidentified facilities or tracking activity.

TOP SECRET



25X

25X

TOP SECRET

25X1

25X1

ARMAVIR ARMY BARRACKS SOUTHEAST

(44-59N 041-09E)

ARMAVIR, KRASNODARSKIY KRAY, USSR

NORTH CAUCASUS MD

25X1

AL No:

25X1

25X1



FIGURE 1. LOCATION OF ARMAVIR ARMY BARRACKS SOUTHEAST.

NPIC K-1077 (4/65)

TOP SECRET

25X1

25X1

TOP SECRET

25X1

25X1



FIGURE 2. ARMAVIR ARMY BARRACKS SOUTHEAST, ARMAVIR, USSR

NPIC K-1078 (4/65)

25X1

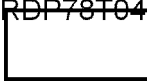
25X

25X

TOP SECRET

TOP SECRET

25X1



25X1

SUMMARY

Armavir Army Barracks Southeast is on the Kuban River in the northeast part of Armavir (Figure 1). The installation may provide vehicle maintenance support for other military facilities in this area.

The barracks installation covers 90 acres and contains 4 school/administration buildings, 12 barracks, a heating plant, 8 support buildings, a storage building, a vehicle maintenance and storage building, and a motor park (Figures

2 and 3).

The installation is covered on GENETRIX photography [redacted] and on [redacted] missions [redacted]

[redacted] Comparative analysis reveals the addition of 3 school/administration buildings, 6 barracks, a heating plant, and a vehicle storage maintenance building [redacted]

A firing range visible on photography [redacted] was eliminated [redacted]

25X1

25X1

25X1

25X1

25X1

25X1

25X1

25X1

25X1

25X1

DESCRIPTION OF INSTALLATION

Railroad Service

Rail loading facilities are available in nearby marshalling yards.

Road Service

The installation is served by city streets.

Administration and Troop Housing Area

Area D contains 12 multistory barracks, 4 multistory school/administration buildings, a heating plant, and 7 support buildings.

General Storage Area

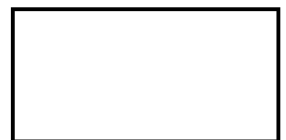
Area E contains a storage building.

Equipment Storage/Maintenance Area

Area J contains a motor park (500 by 300 feet), a vehicle maintenance and storage building (400 by 210 feet), and a support building. Seven unidentified vehicles are in the motor park on photography [redacted]

25X1

TOP SECRET



25X1

25X1

TOP SECRET

25X1

25X1

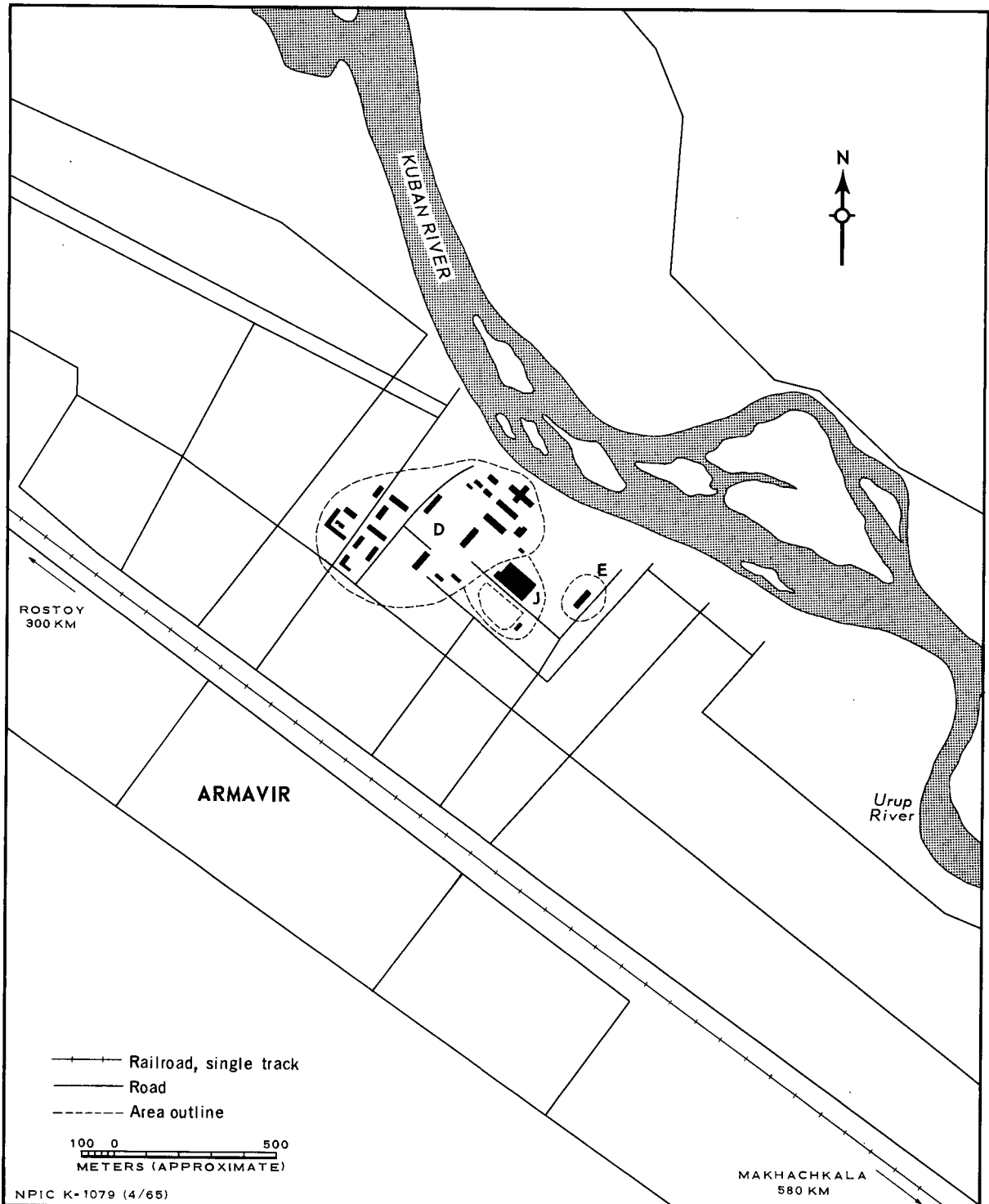


FIGURE 3. ARMAVIR ARMY BARRACKS SOUTHEAST. Sketch compiled

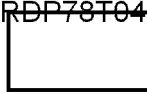
25X1

25X

25X

TOP SECRET

TOP SECRET



25X1

25X1

REFERENCES

PHOTOGRAPHY



25X1

MAPS OR CHARTS

US Air Target Chart, Series 200, Sheet 0249-19, 3d ed, Aug 63 (SECRET)



25X1

REQUIREMENT

DIAAP-1-15-64 (partial answer)

NPIC PROJECT

11905/64

TOP SECRET



25X1

25X1