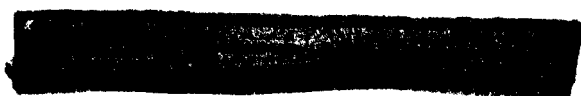


TOP SECRET

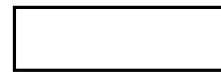
BRIEF

PHOTOGRAPHIC INTERPRETATION REPORT



SAM INSTALLATION SERIES

Declass Review by NIMA/DOD



25X1

AUGUST 1965

COPY **106**

1 PAGE

25X1



GROUP 1 EXCLUDED FROM AUTOMATIC DOWNGRADING AND DECLASSIFICATION

TOP SECRET

25X1

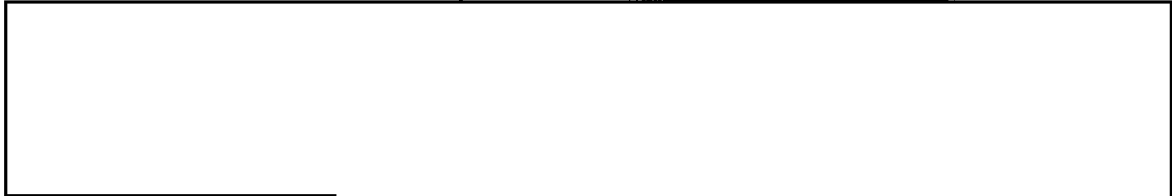
Approved For Release 2003/11/21 : CIA-RDP78T04759A001700010005-4

Approved For Release 2003/11/21 : CIA-RDP78T04759A001700010005-4

NATIONAL PHOTOGRAPHIC INTERPRETATION CENTER

INSTALLATION NAME Lisichansk SAM Site USSR	GEO COORDS 48-48-30N 038-25-45E	PUBLICATION DATE August 1965
	NPIC TARGET NO 0234-39A	BE NO None

25X1D



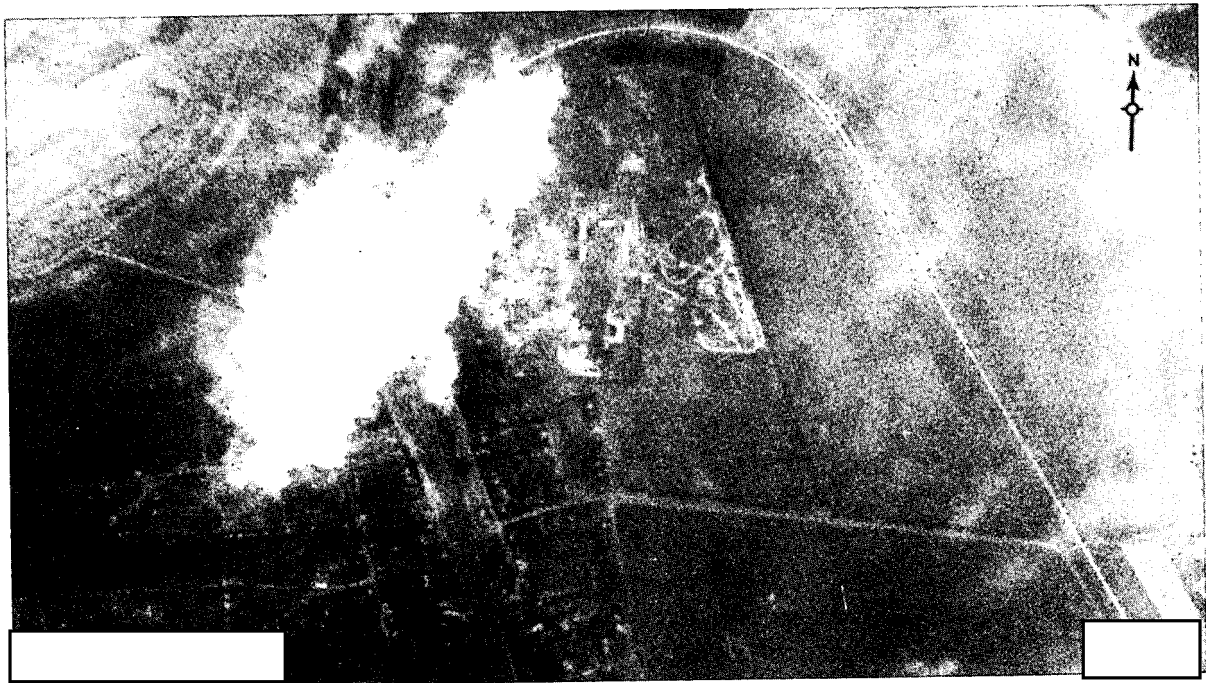
25X1D

	AD AREA ZF-5-10	NPIC PROJECT 11088/66
--	--------------------	--------------------------

REFERENCES

USATC, Series 200, Sheet 0234-18HL, 2d ed, Mar 63 (S); NPIC/R-926/64 (TS
 REQUIREMENT USIB 64

Location: 6.5 nm SSE of Lisichansk
 Configuration: Irregular
 Status: Complete
 Launch Facilities: 6 positions, all probably revetted, occupancy undetermined, haze
 Electronic Facilities: Central guidance area is probably revetted; occupancy undetermined
 Site Support Facilities: At least 7 buildings 1500 ft W of launch area
 Security Measures: Undetermined



25X1D

25X1

~~TOP SECRET~~

~~TOP SECRET~~