

BRIEF

PHOTOGRAPHIC INTERPRETATION REPORT



SAM INSTALLATION SERIES



25X1

OCTOBER 1965

COPY 36

1 PAGE

25X1



GROUP 1 EXCLUDED FROM
AUTOMATIC DOWNGRADING
AND DECLASSIFICATION

TOP SECRET

DECLASS REVIEW by NIMA/DOD

25X1

Approved For Release 2003/11/21 : CIA-RDP78T04759A002000010100-4

Approved For Release 2003/11/21 : CIA-RDP78T04759A002000010100-4

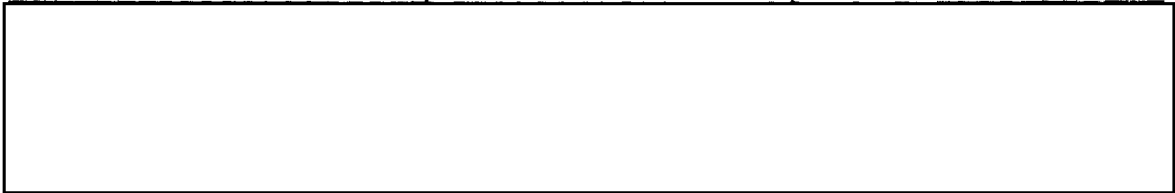
25X1

Approved For Release 2003/11/21 : CIA-RDP78T04759A002000010100-4	TOP SECRET	CIA-RDP78T04759A002000010100-4
--	-------------------	--------------------------------

25X1

NATIONAL PHOTOGRAPHIC INTERPRETATION CENTER

INSTALLATION NAME Tuapse SAM Site USSR	GEO COORDS 43-53-30N 039-22-15E	PUBLICATION DATE October 1965
	NPIC TARGET NO 0324-8A	BE NO None



25X1D

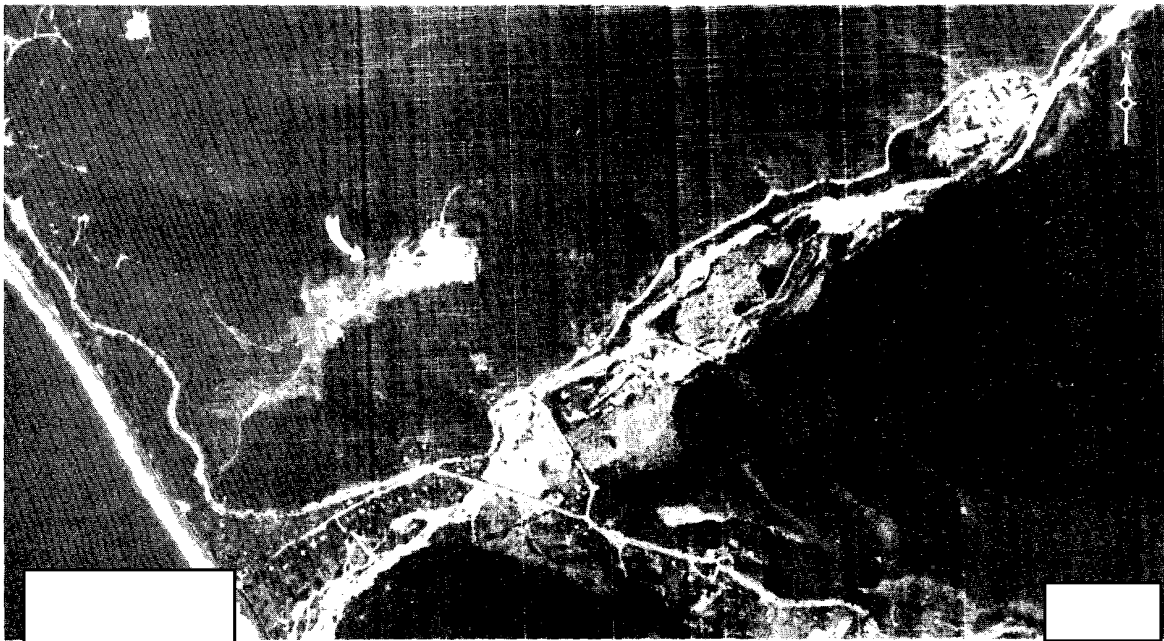
25X1D

	AD AREA ZF-5-8	NPIC PROJECT 13222/66
--	-------------------	--------------------------

REFERENCES
 USATC. Series 200. Sheet 0324-3HL, 3d ed, Apr 63 (S); NPIC/R-926/64 (MS)
 REQUIREMENT: USIB-64

25X1

Location: 18.6 nm SE of Tuapse
 Configuration: Irregular
 Status: Complete
 Launch Facilities: 6 positions, all revetted, all unoccupied
 Electronic Facilities: Central guidance area is revetted, unoccupied
 Site Support Facilities: None
 Security Measures: None



25X1

25X1D

25X1

TOP SECRET

TOP SECRET

Approved For Release 2003/11/21 : CIA-RDP78T04759A002000010100-4



TOP SECRET

Approved For Release 2003/11/21 : CIA-RDP78T04759A002000010100-4