

TOP SECRET

Approved For Release 2003/06/20 : CIA-RDP78T04759A006400010022-3

PHOTOGRAPHIC INTERPRETATION REPORT



VITAL RECORD COPY

**KOZELSK
ICBM COMPLEX
USSR**

**RAIL-TO-ROAD
TRANSFER POINT**

[Redacted Box]

25X1

MARCH 1967

COPY 116

6 PAGES

6

25X1

Declass Review by NIMA/DOD

GROUP 1 EXCLUDED FROM
AUTOMATIC DOWNGRADING
AND DECLASSIFICATION

TOP SECRET

Approved For Release 2003/06/20 : CIA-RDP78T04759A006400010022-3

25X1

Approved For Release 2003/06/20 : CIA-RDP78T04759A006400010022-3

Approved For Release 2003/06/20 : CIA-RDP78T04759A006400010022-3

25X1

Approved For Release 2008/06/20 : CIA-RDP78T04759A006400010022-3

~~TOP SECRET~~

25X1

PREFACE

This report supplements [] Kozelsk ICBM Complex, USSR, 1/ prepared in response to CIA Requirement C-DI5-82,972 requesting detailed line drawings, to scale, of elements of the complex. The information contained herein is based on [] photography through [] Individual reports will be updated periodically to reflect changes observed on subsequent photography.

25X1

The precision target plot included in this report is a mathematically rectified projection of the area. Plots are compiled by utilizing precision mensuration instruments, and image interpretation is performed with the aid of stereoscopic viewing equipment. Identifiable image points are measured and their coordinate values mathematically transformed by computer. This transformation corrects for camera and attitude (pitch, roll, and yaw) induced distortions but does not correct for displacement due to ground relief and object height.

This target plot represents the most accurate data compiled to date, but the user is cautioned to exercise care in scaling distances or determining azimuths from this plot, inasmuch as relief can introduce errors in distance and alignment.

- i -

Approved For Release 2008/06/20 : CIA-RDP78T04759A006400010022-3

~~TOP SECRET~~

25X1

25X1

Approved For Release 2000/06/20 : CIA-RDP78T04759A006400010022-3

TOP SECRET

25X1

KOZELSK ICBM COMPLEX, USSR**RAIL-TO-ROAD TRANSFER POINT**

The rail-to-road transfer point serving the Kozelsk ICBM Complex (Figures 1 and 2) is located at 53-56N 35-46E, in a wooded tract approximately 2.0 nautical miles west-southwest of the complex support facility. It was first seen on photography of [REDACTED]; the area was covered by photography [REDACTED] but the poor quality precludes negation.

The original transfer point has been expanded westward, but details are not available because of the lack of useable photography.

- 1 -

Approved For Release 2000/06/20 : CIA-RDP78T04759A006400010022-3

TOP SECRET

25X1

TOP SECRET

25X1

25X1

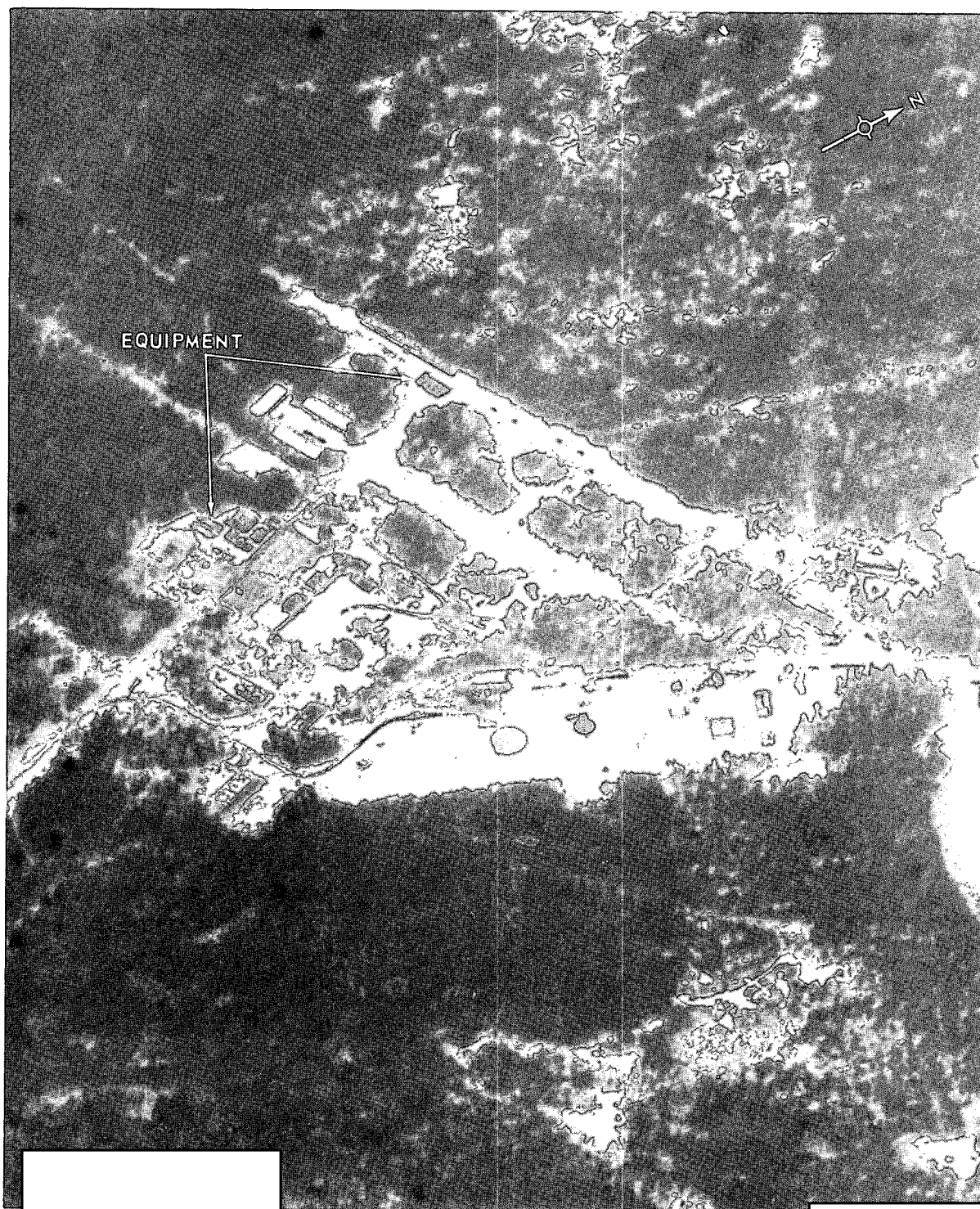


FIGURE 1. RAIL-TO-ROAD TRANSFER POINT, KOZELSK ICBM COMPLEX.

25X1

25X1

TOP SECRET

25X1

TOP SECRET

25X1

25X1

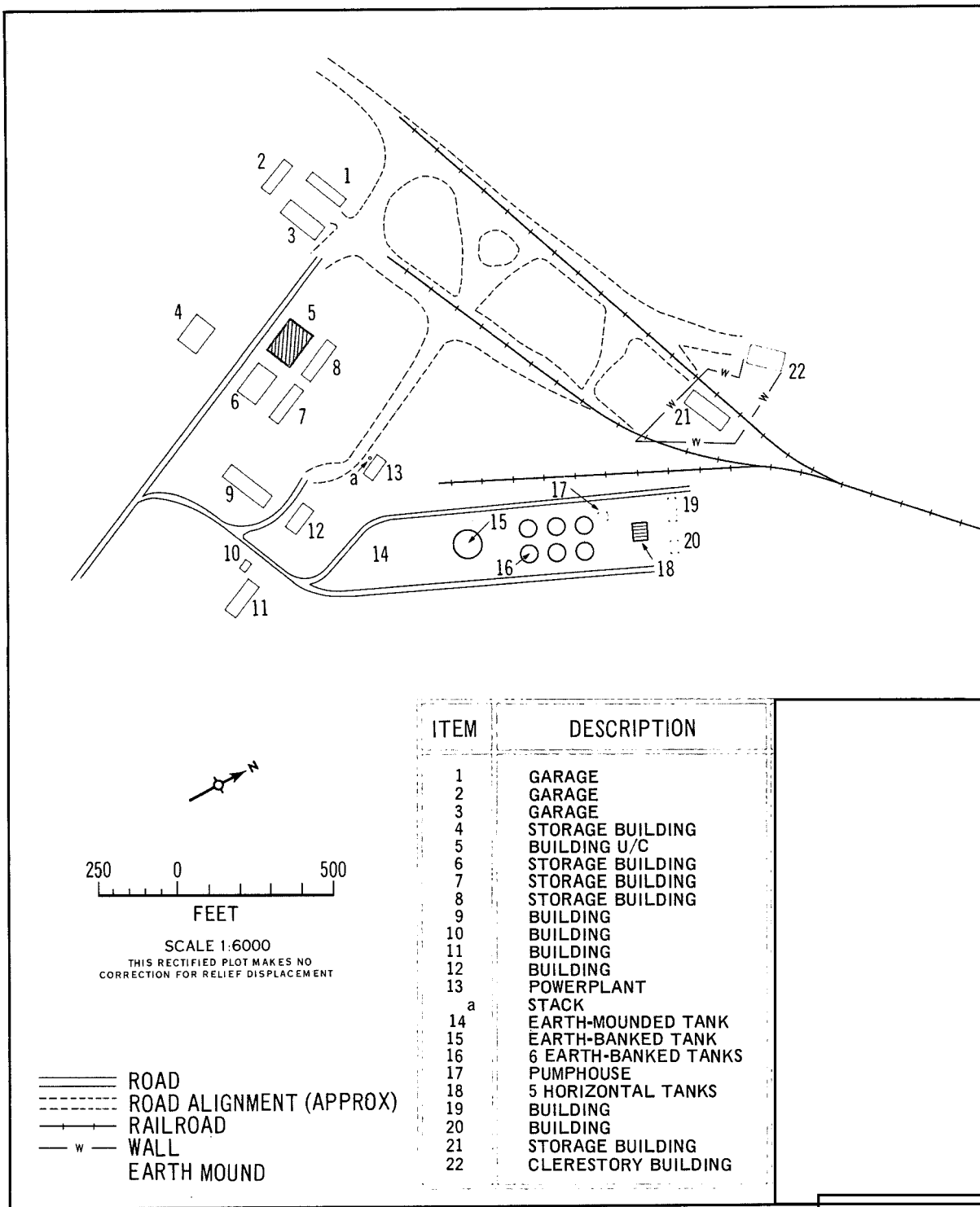


FIGURE 2. LAYOUT OF RAIL-TO-ROAD TRANSFER POINT, KOZELSK ICBM COMPLEX.

25X1

25X

TOP SECRET

25X1

25X1

Approved For Release 2003/08/20 : CIA-RDP78T04759A006400010022-3

TOP SECRET

25X1

REFERENCES

25X1

DOCUMENT

1. NPIC. *Kozelsk ICBM Complex, USSR*, Aug 66 (TOP SECRET)

25X1

REQUIREMENT

CIA. C-DI5-82,972

NPIC PROJECT

11210/66 (partial answer)

25X1