

25X1

Approved For Release 2003/11/21 : CIA-RDP78T04759A007100010005-4

TOP SECRET

PHOTOGRAPHIC INTERPRETATION REPORT



PROBABLE
EARTH SATELLITE
VEHICLE TRACKING
FACILITY
KOLPASHEVO, USSR

25X1

JULY 1967

COPY

5 PAGES

25X1

Declass Review by NIMA / DoD

GROUP 1 EXCLUDED FROM
AUTOMATIC DOWNGRADING
AND DECLASSIFICATION

Approved For Release 2003/11/21 : CIA-RDP78T04759A007100010005-4

TOP SECRET

25X1

25X1

Approved For Release 2003/11/21 : CIA-RDP78T04759A007100010005-4

Approved For Release 2003/11/21 : CIA-RDP78T04759A007100010005-4

TOP SECRET

Approved For Release 2003/11/21 : CIA-RDP78T04759A007100010005-4

25X1

25X1

PROBABLE EARTH SATELLITE VEHICLE TRACKING FACILITY, KOLPASHEVO, USSR

This report is in response to NSA requirement NSA/SOC/R99-67 which requests a complete description of the newly identified Probable Earth Satellite Vehicle (ESV) Tracking Facility at Kolpashevo, USSR (Figure 1).

The Kolpashevo Probable ESV Tracking Facility (Figures 2 and 3) is the ninth ESV tracking facility 1/ identified in the USSR to date. This facility is 125 nautical miles (nm) northwest of the Tomsk and 1 nm north of Kolpashevo at 58-19-45N 082-53-00E.

The large tracking building in this facility supports a 50-foot dome and is identical in appearance to those observed at other ESV tracking facilities; however, at each of the other

facilities, there are 2 tracking buildings. Figure 4 is a ground photograph of the similar ESV tracking building at the Simferopol ESV Tracking Facility at 45-03N 033-53E. No other tracking buildings identified with either the ESV system or the Molniya space communications system 2/ have been observed in the area. Two rhombic antennas are generally oriented in an east-west direction and they probably correspond with the Moskva area.

The facility cannot be negated on available photography. The first indication of construction in the area was the 5 support buildings observed

25X1

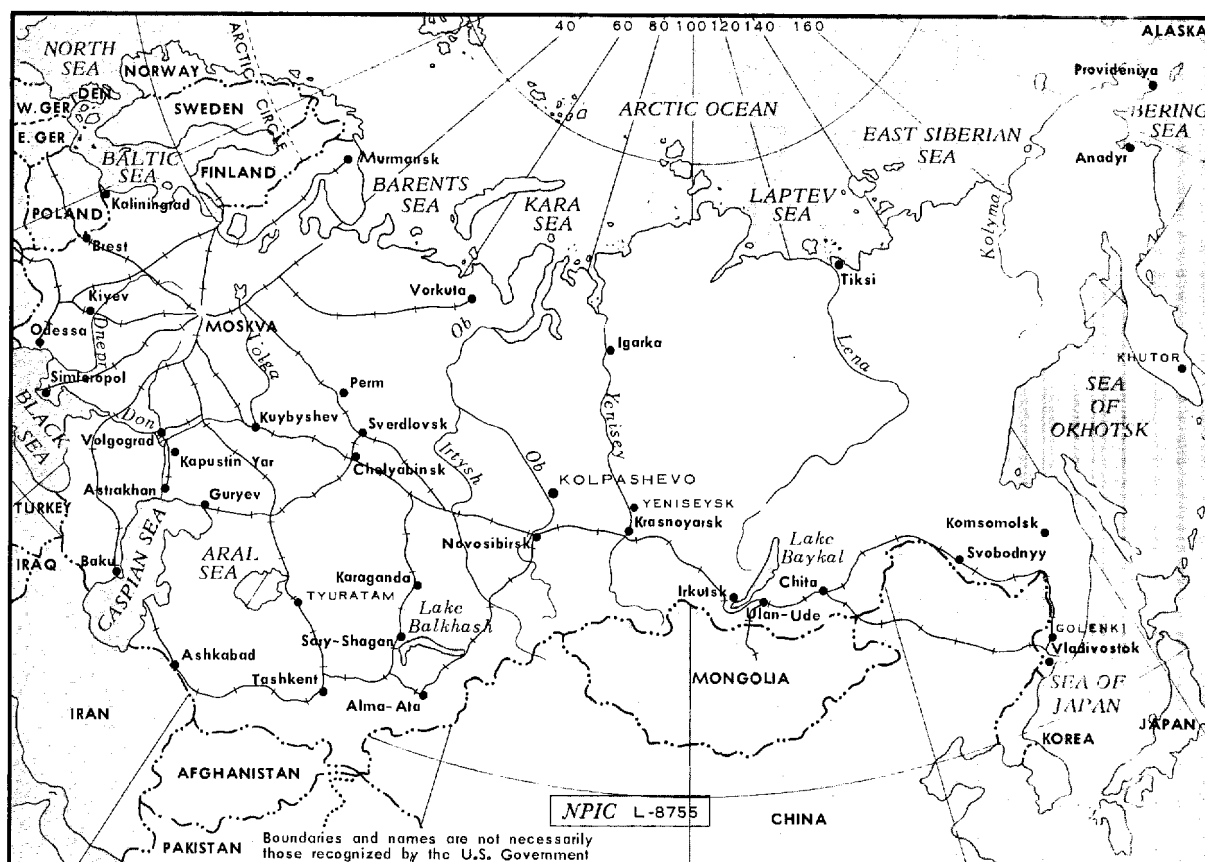


FIGURE 1. LOCATION OF EARTH SATELLITE VEHICLE TRACKING FACILITIES.

25X1

- 1 -

Approved For Release 2003/11/21 : CIA-RDP78T04759A007100010005-4

TOP SECRET

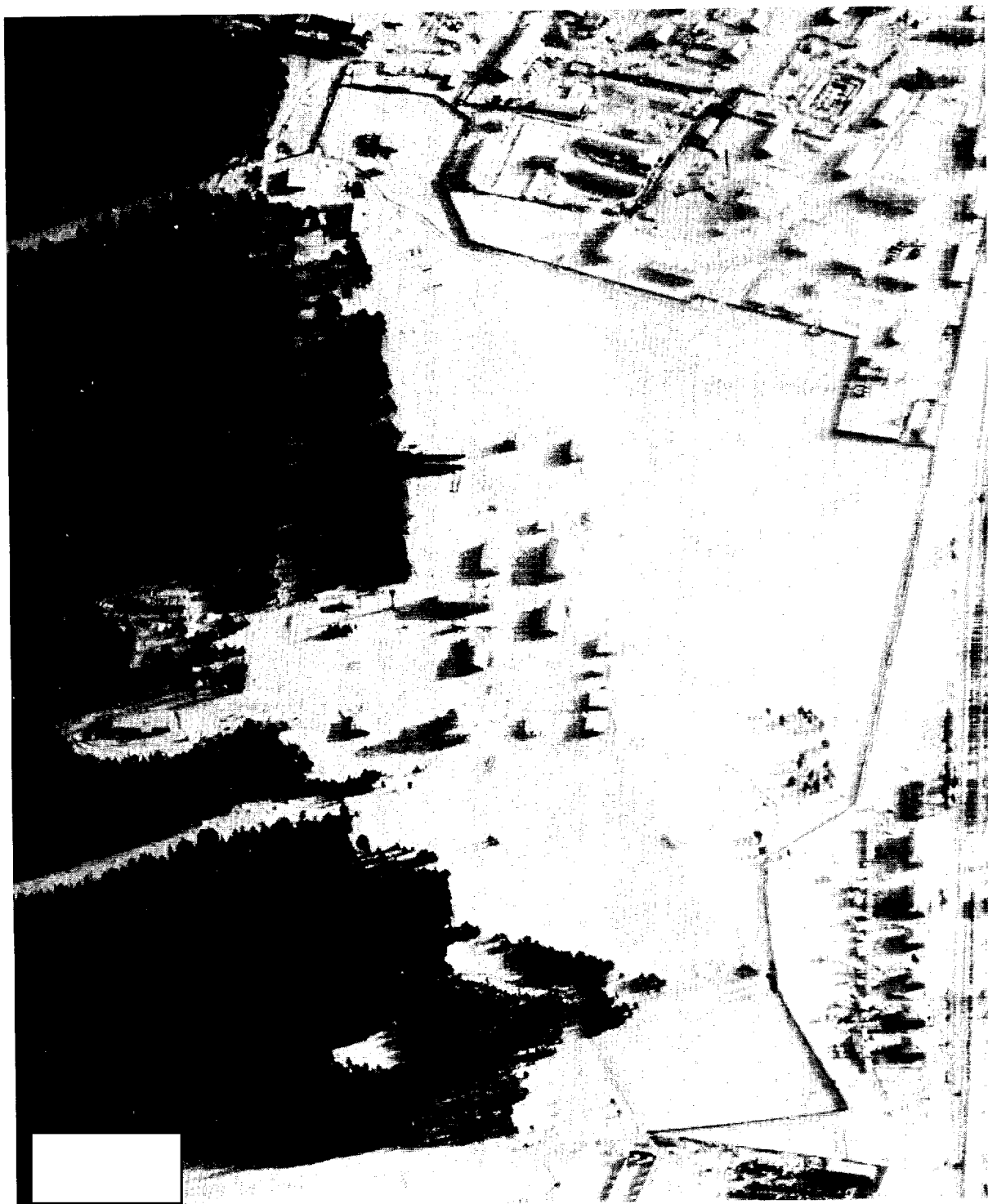
25X1

25X1

TOP SECRET
Approved For Release 2003/11/21 : CIA-RDP78T04759A007100010005-4

25X1

25X1



25X1

FIGURE 2. KOLPASHEVO PROBABLE EARTH SATELLITE VEHICLE TRACKING FACILITY.

25X1

- 2 -

TOP SECRET
Approved For Release 2003/11/21 : CIA-RDP78T04759A007100010005-4

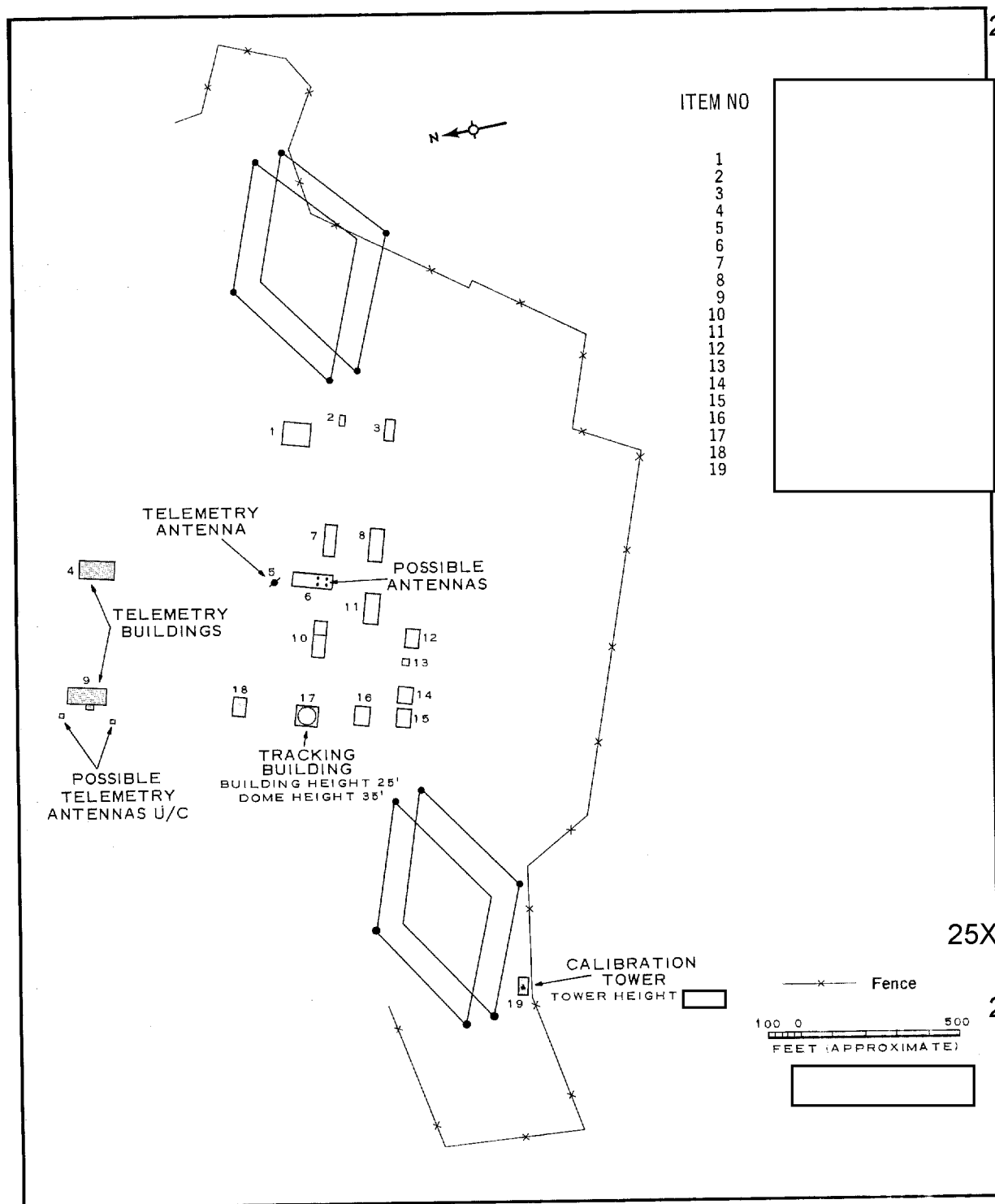
25X1

25X1

TOP SECRET
Approved For Release 2003/11/21 : CIA-RDP78T04759A007100010005-4

25X1

25X1



25X1

25X1

25X1

FIGURE 3. LAYOUT OF THE KOLPASHEVO PROBABLE EARTH SATELLITE VEHICLE TRACKING FACILITY.

25X1

25X1

25X1

TOP SECRET
Approved For Release 2003/11/21 : CIA-RDP78T04759A007100010005-4

25X1

25X1D

25X1

25X1D

25X1D

25X1D

[redacted] most of the support buildings were complete, but the interpretability of this photography precluded the identification of the ESV tracking building. The ESV tracking building, but without its dome, and a security fence were first observed on [redacted]

and to be externally complete. The construction of the probable telemetry buildings, designated 4 and 9 on Figure 3, was first observed on [redacted]

25X1D

25X1D

[redacted] At that time, the major part of the construction of the facility appeared to be externally complete. [redacted]

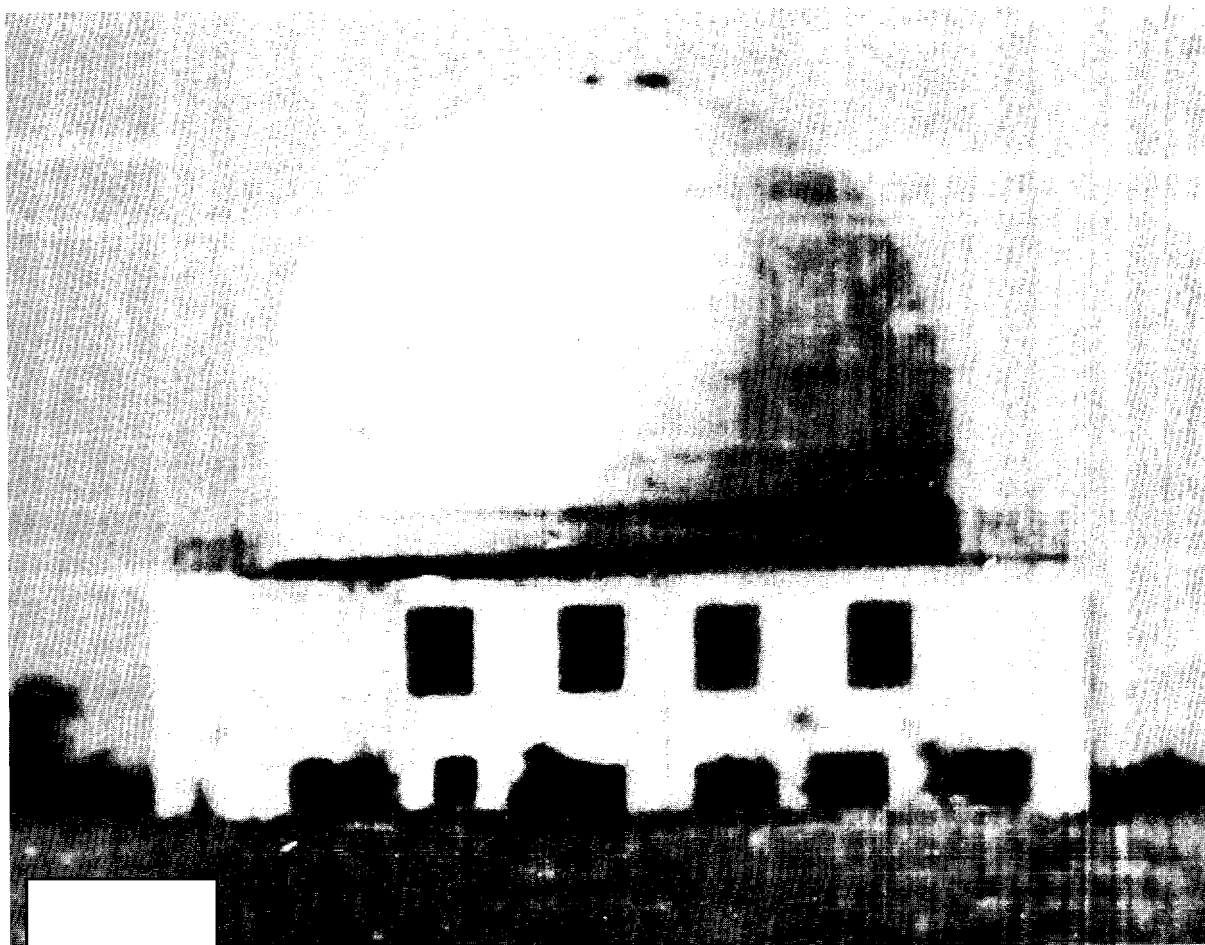
[redacted] telemetry building 4 was under roof and the footings for telemetry building 9 were observed. Telemetry building 4 was externally complete and telemetry building 9 was partially under roof [redacted]

25X1D

25X1D

[redacted] the dome appeared to be on the ESV tracking building [redacted]

25X1D



25X1

FIGURE 4. SIMFEROPOL ESV TRACKING BUILDING.

25X1

TOP SECRET
Approved For Release 2003/11/21 : CIA-RDP78T04759A007100010005-4

25X1

25X1

Approved For Release 2003/11/21 : CIA-RDP78T04759A007100010005-4

TOP SECRET

25X1

25X1

REFERENCES

25X1D

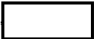
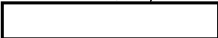
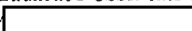


MAPS OR CHARTS

ACIC series, scale 1:200,000

25X1

DOCUMENTS

1. NPIC. R-69/64, *Earth Satellite Tracking and Communication Center, Simferopol, USSR*, Feb 64 (TOP SECRET 

2. DIA. "Molniya-1 Program Launches USSR into Space Communications," *Defense Intelligence Digest*, Vol 5, No 1, Jan 67, p. 41-48 (SECRET, 

25X1

25X1

REQUIREMENT

NSA/SOC/R99-67

NPIC PROJECT

11407/67

TOP SECRET

25X1

25X1

Approved For Release 2003/11/21 : CIA-RDP78T04759A007100010005-4

25X1

Approved For Release 2003/11/21 : CIA-RDP78T04759A007100010005-4

Approved For Release 2003/11/21 : CIA-RDP78T04759A007100010005-4