

TOP SECRET



IMAGERY
ANALYSIS
DIVISION

PIR

PHOTOGRAPHIC INTELLIGENCE REPORT



DIMENSIONS OF MISSILES

KIYEV ARMY BARRACKS

USSR

Declassification by NIMA/DoD



25X

25X

CIA/PIR 61085



DATE Jan 1966

COPY 88

PAGES 5

GROUP 1
Excluded from automatic
downgrading and declassification

TOP SECRET

25X1

Approved For Release 2003/08/05 : CIA-RDP78T05161A000400010017-7

Approved For Release 2003/08/05 : CIA-RDP78T05161A000400010017-7

Approved For Release 2003/08/05 : CIA-RDP78T05161A000400010017-7

RECORD COPY	COPY NO.	PUB. DATE	LOCATION	MASTER	DATE RECEIVED	LOCATION
CUT TO COPIES	DATE	CUT TO COPIES	DATE	STOCK DATE	MINIMUM	MAXIMUM
0	5-77					10
CUT TO COPIES	DATE	CUT TO COPIES	DATE	COPIES DESTROYED		
CUT TO COPIES	DATE	MASTER	DATE			

DATE			RECEIVED OR ISSUED	NUMBER OF COPIES			DATE			RECEIVED OR ISSUED	NUMBER OF COPIES		
MO.	DAY	YR.		REC'D	ISS'D	BAL	MO.	DAY	YR.		REC'D	ISS'D	BAL
9	4	68	Dist Unit #91-100	10		10							
8	2	72	Dist # 91-100			0	W	K	G				

X1
X1

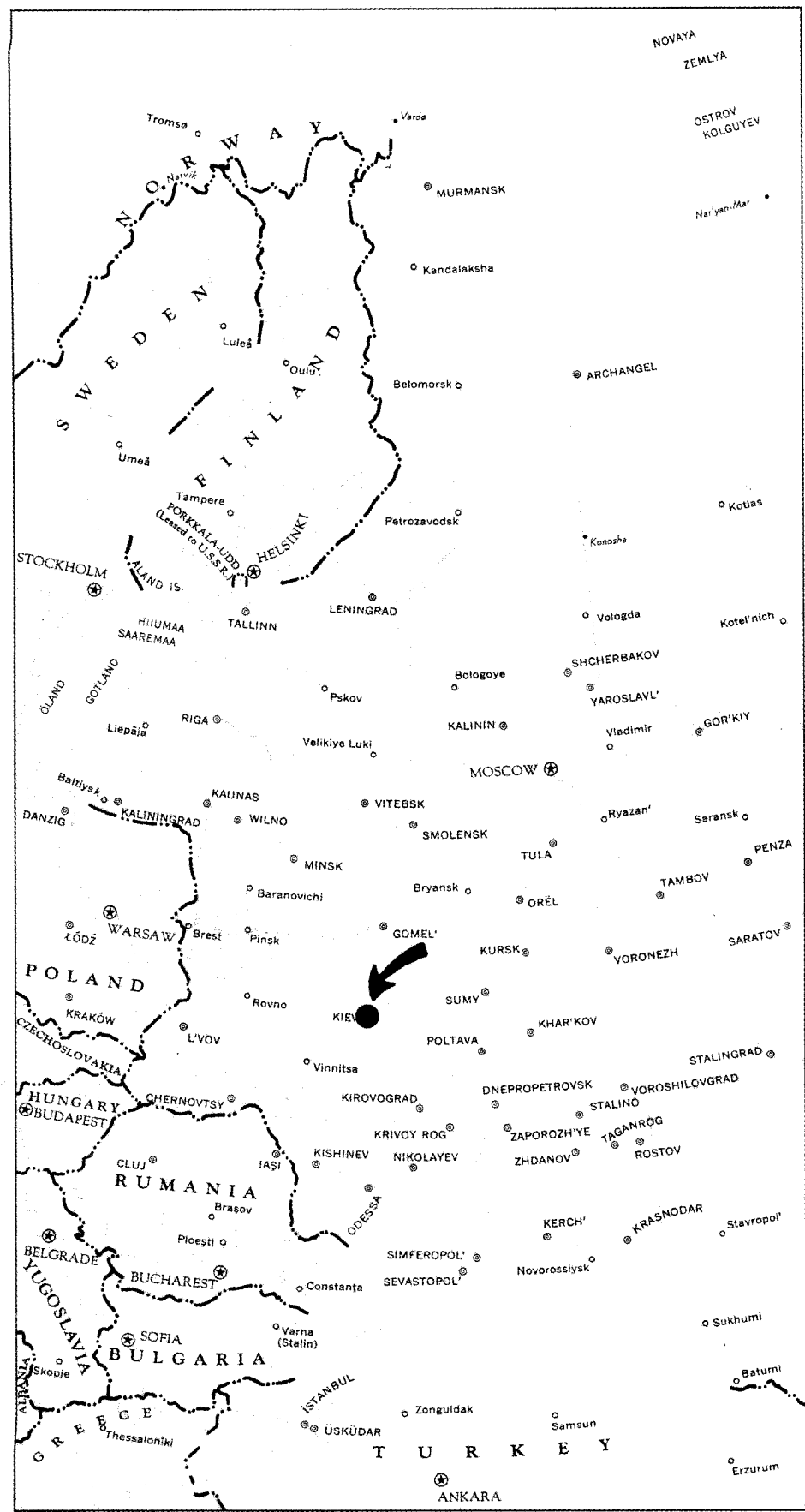
TOP SECRET

Approved For Release 2003/08/05 : CIA-RDP78T05161A000400010017-7

25X

CIA/PTR-61085

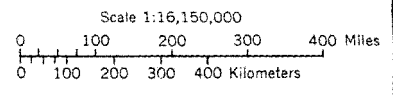
EUROPEAN U.S.S.R.



LOCATER MAP KIYEV, USSR

- International boundary
- ⊕ National capital
- ⊙ Railroad (selected)
- ⊖ Canal (selected)

Some boundaries shown on this map are de facto boundaries (1952), not necessarily recognized as definitive by the United States Government; the United States Government has not recognized the incorporation of Estonia, Latvia, Lithuania into the Soviet Union.



Base 12076 4-52

Approved For Release 2003/08/05 : CIA-RDP78T05161A000400010017-7

TOP SECRET

FIG 1

25X
25X

TOP SECRET

CIA/PIR-61085

CIA IMAGERY ANALYSIS DIVISION

DIMENSIONS OF MISSILES

KIYEV ARMY BARRACKS

USSR

This report presents results of mensuration made on four missiles and prime movers seen at the Kiyev Army Barracks (50-27N 30-28E), USSR, on [redacted] Figure 2). The missiles were located within the area designated as J2 in NPIC/R-5156/64.

The area delineated in Figure 2 has a hard-surface pavement and contains seven buildings and two groups of parked vehicles, as well as the four missiles and prime movers. A line drawing of this area with dimensions of the missiles is contained in Figure 3.

All measurements as depicted in the line drawing have been made by the NPIC Technical Intelligence Division and are considered to be accurate within +5 feet.

REFERENCES

PHOTOGRAPHY



CHART

ACIC. US Air Target Chart, Series 200, Sheet 0233-9HL, 3rd edition, May 1962 (SECRET)

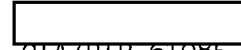
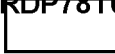
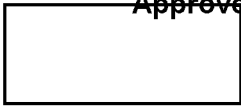
DOCUMENTS

CIA. IAD Memo M/EB 490/64, [redacted] Kiyev Army Barracks and School, October 1964 (TOP SECRET [redacted])

NPIC. R-5156/64, [redacted] Soviet Military Order of Battle, Kiyev MD December 1964 (TOP SECRET [redacted])

TOP SECRET

TOP SECRET



CIA IMAGERY ANALYSIS DIVISION

CIA/PIR-61085

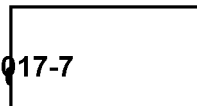
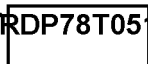
REQUIREMENT

C-RR4-81,952

CIA/IAD PROJECT

30912-4

TOP SECRET



X1

• LOCATION OF MISSILES
AT KIYEV ARMY BARRACKS, USSR

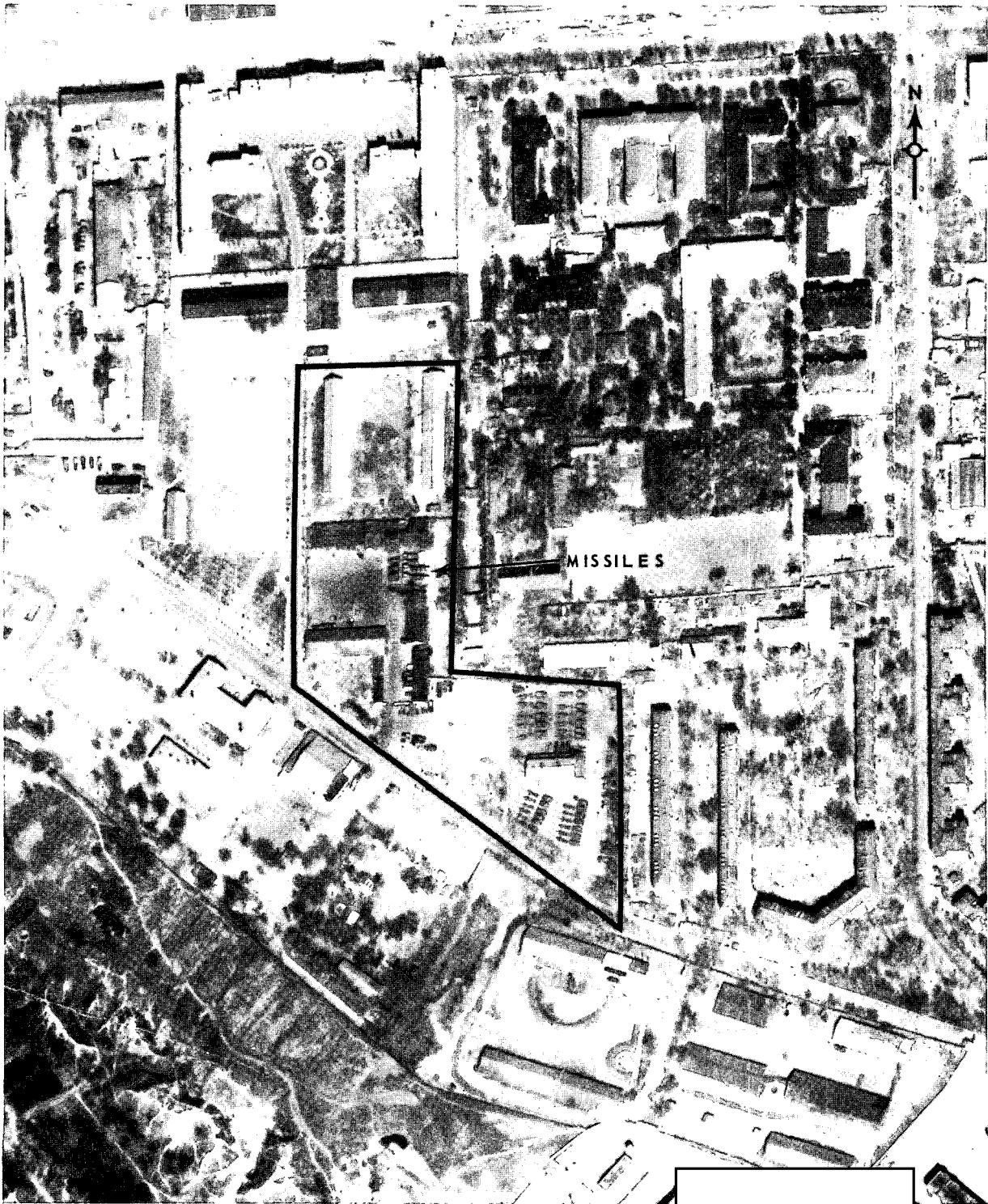
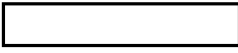
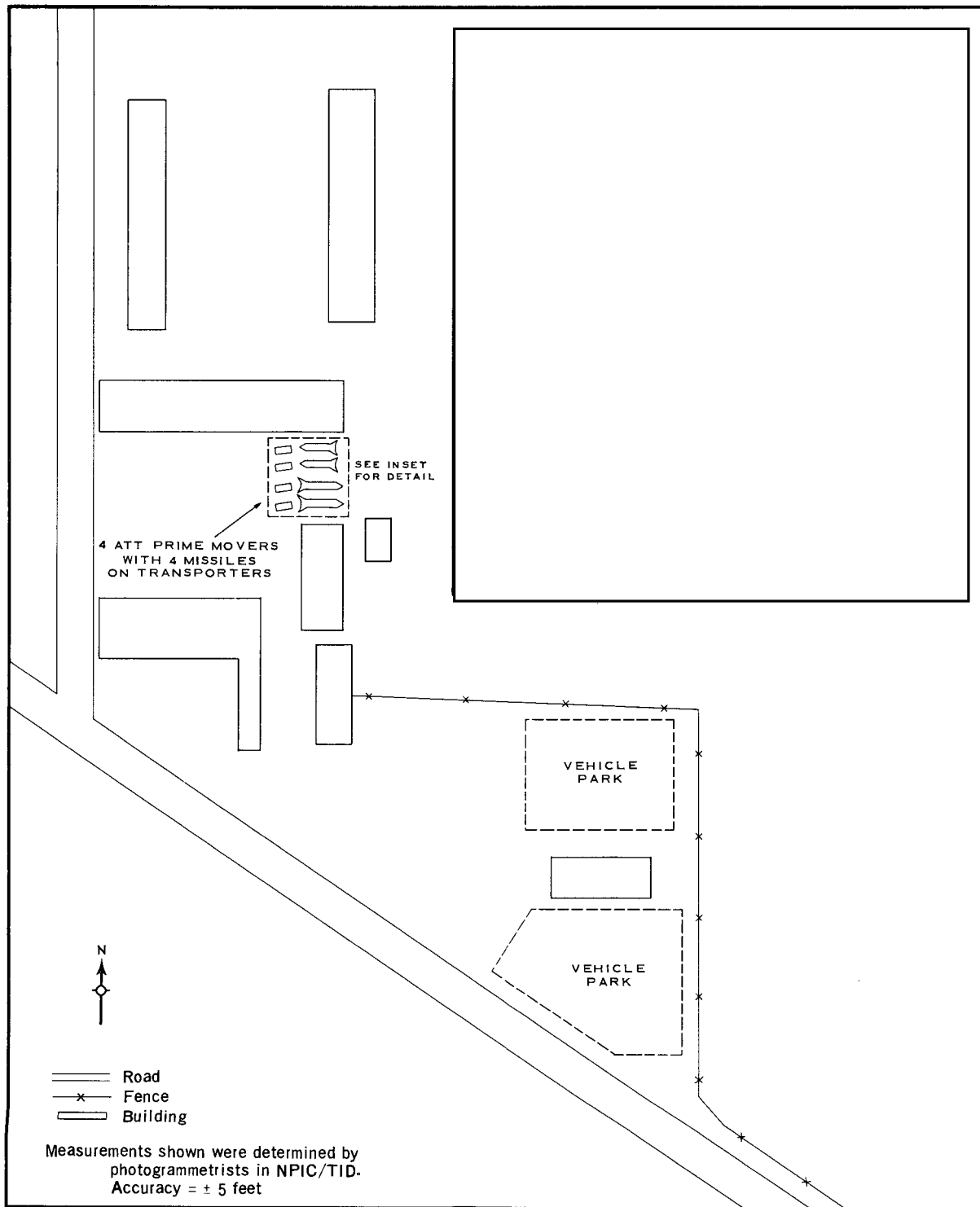


FIG 2 Approved For Release 2003/08/05 : CIA-RDP78T05161A000400010017-7
TOP SECRET

X1

DIAGRAM SHOWING LOCATION OF MISSILES
AT KIYEV ARMY BARRACKS, USSR
50-27-30N 30-28-40E



TOP SECRET

3
-
3
3

3
-
3
3

TOP SECRET