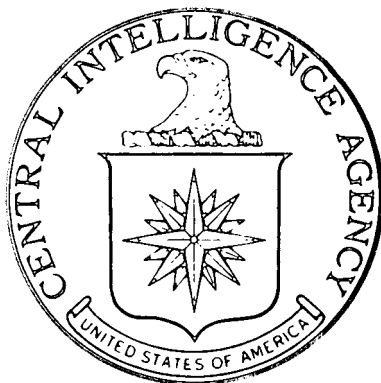


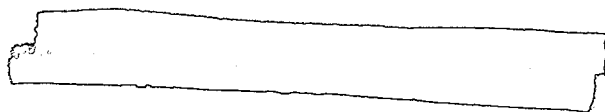
TOP SECRET



IMAGERY
ANALYSIS
DIVISION

PIR

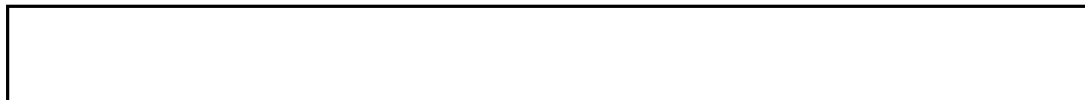
PHOTOGRAPHIC INTELLIGENCE REPORT



AIRFRAME PLANT NO. 39

IRKUTSK, USSR

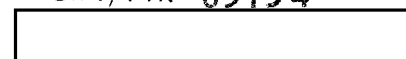
Declass Review by
NIMA/DOD



25X

25X

CIA/PIR 65134



DATE MAY 1966

COPY

PAGES 7

GROUP 1
Excluded from automatic
downgrading and declassification

TOP SECRET

25X1

Approved For Release 2004/05/05 : CIA-RDP78T05161A000600010029-2

Approved For Release 2004/05/05 : CIA-RDP78T05161A000600010029-2

Approved For Release 2004/05/05 : CIA-RDP78T05161A000600010029-2

[illegible]

Approved For Release 2004/05/05 : CIA-RDP78T05161A000600010029-2

X1

Approved For Release 2004/05/05 : CIA-RDP78T05161A000600010029-2

~~TOP SECRET~~

25X

CIA IMAGERY ANALYSIS DIVISION

AIRFRAME PLANT NO. 39, IRKUTSK, USSR

Approved For Release 2004/05/05 : CIA-RDP78T05161A000600010029-2

~~TOP SECRET~~

25X

TOP SECRET

Approved For Release 2004/08/05 : CIA-RDP78T05161A000600010029-2

PIR - 65134
FIGURE 1

AIRFRAME PLANT NO. 39
IRKUTSK, USSR

Approved For Release 2004/08/05 : CIA-RDP78T05161A000600010029-2

TOP SECRET

~~TOP SECRET~~

PIR - 65134

CIA IMAGERY ANALYSIS DIVISION

AIRFRAME PLANT NO. 39, IRKUTSK, USSR

Irkutsk Airframe Plant No. 39 is located five nautical miles northwest of Irkutsk, USSR at 52 25N - 104 04E. The plant is adjacent to Irkutsk Airfield Northwest and is both road and rail served.

The plant was first reported on from good quality photography in [redacted] At that time the plant contained approximately 2,098,200 square feet of floorspace with an addition to the subassembly section in the initial stages of construction. As of Mission [redacted] this addition was approximately 50% complete and appeared complete on [redacted]

The plant consists of 19 major buildings, including a final assembly hall 1,035' x 225' x 80' in height, workshops, a probable forge, a foundry a steam/power plant and various storage/support buildings. The plant is secured by approximately 35,365 feet of concrete or masonry wall and contains approximately 3,028,325 square feet of concrete runways and parking aprons. The plant also contains approximately 8,265 feet of hard surface road with a total area of 235,590 square feet, thus yielding an average width of [redacted] The only changes to the plant since [redacted] [redacted] have been the completion of the addition to the subassembly building and the construction of one small storage/support building adjacent to the coal yard.

All measurements have been made by the NPIC/TID with the exception of road measurements and those denoted in the table by an asterisk. These measurements were made by the CIA/IAD analyst. They should be considered as approximate and must not be construed as official NPIC mensuration data. The NPIC/TID measurements are considered to be accurate within ± 5 feet or $\pm 5\%$, whichever is greater.

~~TOP SECRET~~

TOP SECRET

PIR - 65134

CIA IMAGERY ANALYSIS DIVISION

AIRFRAME PLANT NO. 39, IRKUTSK, USSR

TABLE 1

ITEM	DESCRIPTION	DIMENSIONS (feet)	FLOORSPACE (sq. feet)	VOLUME (cu. feet)
1	Hanger/workshop	Irr x 30 to 45	94,380	3,875,500
2	Final assembly hall	1035 x 225 x 80	234,275	18,742,000
3	Subassembly section	1035 x 320 x 75	331,200	24,840,000
4	Subassembly section	Irr x 40 & 75	225,975	24,274,225
5	Workshop	Irr x 20 & 25	22,080	457,600
6	Probable forge	185 x 55 x 40	10,175	407,000
7	Workshop/machine shop section	Irr x 25 to 60	385,325	12,012,125
8	Workshop	Irr x 15		109,410
9	U/I heat treatment building	Irr x 15 & 25		503,135
10	Workshop	Irr x 25 & 30	58,070	1,453,100
11	Admin/engineering building	Irr x 20 & 40		978,520
12	Admin/engineering building	x 35		384,090
13	Foundry/workshop	Irr x 20 & 30		1,748,420
14	Steam plant/power plant	Irr x 15 to 55	30,420	2,291,100
15	Workshop	Irr x 30	21,450	643,500
16	Workshop	Irr x 25 & 45	44,250	918,000
17	Warehouse/shipping building	Irr x 20 & 30		
18	Workshop/machine shop	Irr x 35 & 40	100,300	3,571,000
19	Shipping building	Irr x 10 to 30	20,225	483,500
	Storage/support building			
	TOTAL		2,169,050	

25X

25X

25X

25X

25X

25X

TOP SECRET

25X1

TOP SECRET

Approved For Release

IRKUTSK AIRFRAME PLANT #39
IRKUTSK, USSR

CIA/PIR 65134

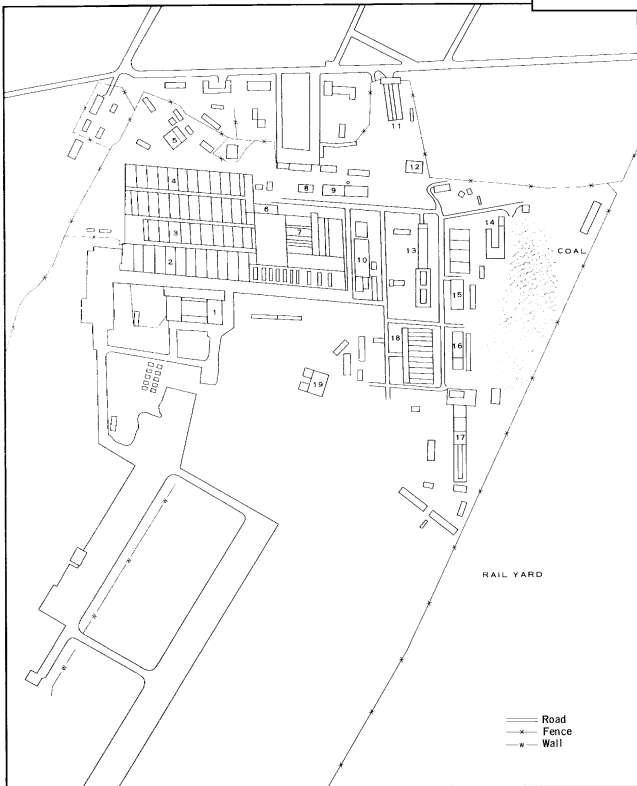
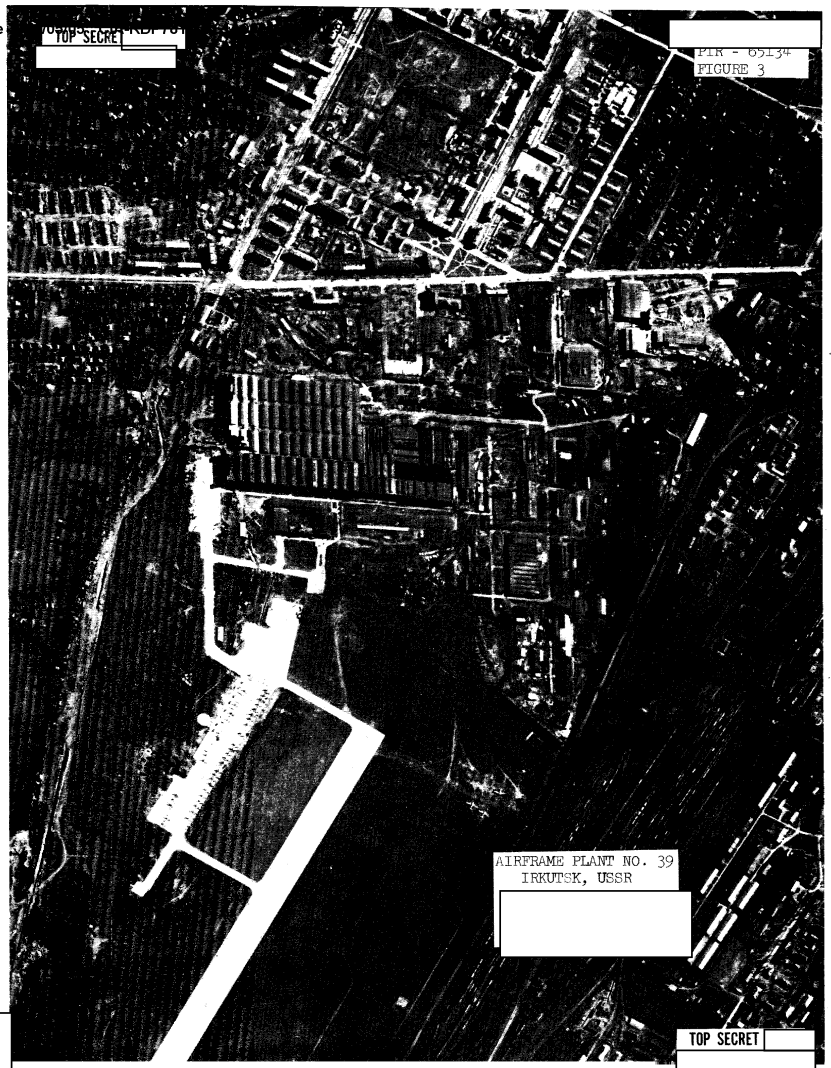


FIGURE 2

25X1

25X1

TOP SECRET



25X1
25X1

25X1

25X1
25X1

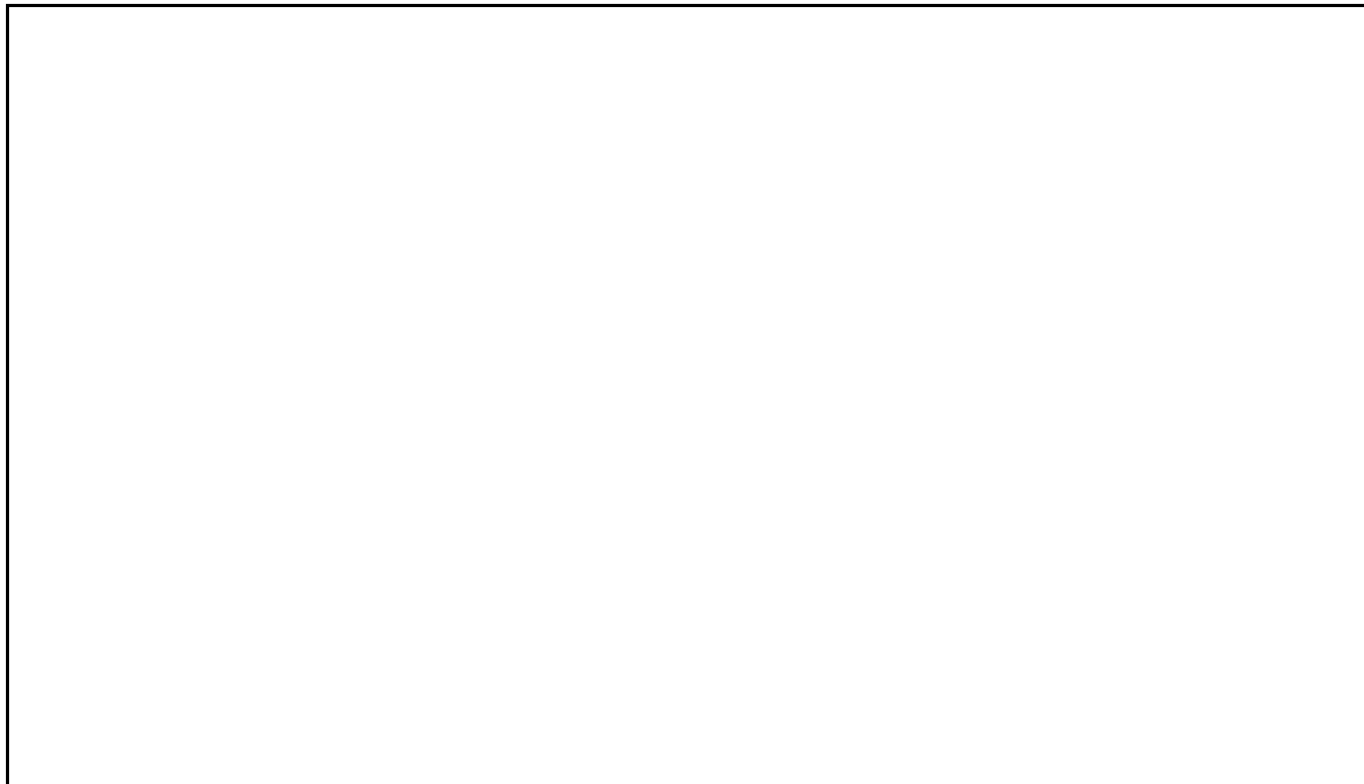
TOP SECRET

TOP SECRET

PIR - 65134

CIA IMAGERY ANALYSIS DIVISION

REFERENCES



MAPS AND CHARTS

ACIC. U.S. Air Target Chart, Series 200, Sheet 0200-22HL, Scale 1:200,000
2nd Edition, May 1962 (SECRET)

REQUIREMENT

C-RR5-82,560

CIA/IAD PROJECT

30649-5

TOP SECRET

Approved For Release 2004/07/05 : CIA-RDP78T05161A000600010029-2

~~TOP SECRET~~

Approved For Release 2004/07/05 : CIA-RDP78T05161A000600010029-2

~~TOP SECRET~~