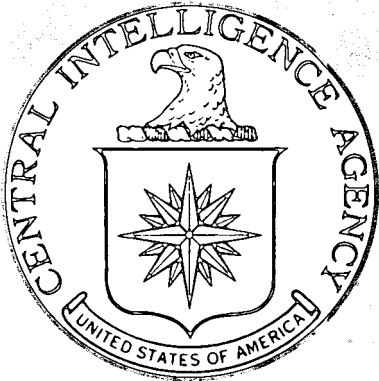


14

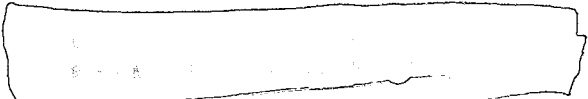
CONFIDENTIAL



IMAGERY
ANALYSIS
DIVISION

PIR

PHOTOGRAPHIC INTELLIGENCE REPORT



THAI NGUYEN IRON AND STEEL COMBINE

THAI NGUYEN, NORTH VIETNAM

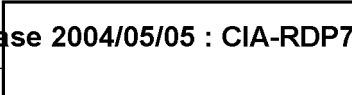
Declass Review by NIMA/DOD

CIA/P R 65112

DATE MAY 1966

CONFIDENTIAL

GROUP 1
Excluded from automatic
downgrading and declassification



W A R N I N G

This document contains information affecting the national defense of the United States, within the meaning of Title 18, sections 793 and 794, of the U.S. Code, as amended. Its transmission or revelation of its contents to or receipt by an unauthorized person is prohibited by law.

Approved For Release 2004/05/05 : CIA-RDP78T05161A000600010042-7

RECORD COPY	COPY NO.	PUB. DATE	LOCATION	MASTER	DATE RECEIVED	LOCATION
DISPOSITION DATE(S)				STOCK	MINIMUM	MAXIMUM
CUT TO COPIES	DATE	CUT TO COPIES	DATE	COPIES DESTROYED		5
0	7-72					
CUT TO COPIES	DATE	CUT TO COPIES	DATE			
CUT TO COPIES	DATE	MASTER	DATE			

DATE			RECEIVED OR ISSUED	NUMBER OF COPIES			DATE			RECEIVED OR ISSUED	NUMBER OF COPIES		
MO.	DAY	YR.		REC'D	ISS'D	BAL	MO.	DAY	YR.		REC'D	ISS'D	BAL
5	22	58	Dist. Unit	5		5							
10	19	72	Dest 5 Copies			0	W	K	G				

~~CONFIDENTIAL~~

PTB - 65112



25X

CIA IMAGERY ANALYSIS DIVISION

THAI NGUYEN IRON AND STEEL COMBINE

The Thai Nguyen Iron and Steel Combine is located at 21 34N - 105 52E approximately three nautical miles SSE of the city of Thai Nguyen, North Vietnam.

The complex is an incomplete coke, iron, and steel complex with nine functional areas containing ore sintering facilities, one coke oven battery, a coke by-products section, three blast furnaces, a 2 stack open hearth furnace building, a rolling mill under construction, a fabrication area, and storage/support and administration areas. Construction has been continuous between [redacted] and the present time. When observed on [redacted] the plant appeared approximately 50% complete. [redacted] when observed on [redacted] [redacted] the complex appeared essentially complete with the exception of the rolling mill and the open hearth furnace building. The latter building appeared complete, but the presence of a tower jib crane adjacent to it indicated that construction might not be finished.

25X

Later coverage encompassing the time period from [redacted] [redacted] shows that the only subsequent change has been the apparent completion of the open hearth furnace building, and a small amount of further construction on the rolling mill.

25X

[redacted] shows the plant to be apparently inactive; however, the blast furnaces, coking oven, and fabrication section appear to be complete. Analysis of [redacted] [redacted] reveals that one blast furnace, the coke oven, and the coke by-products section were in operation; while [redacted] shows all the blast furnaces in operation. For these reasons, it would appear that the plant is operational with the exception of the rolling mill and the open hearth furnace building, which appears complete as of [redacted] but has not yet been observed in operation. The open fabrication yard shown on the line drawing (Figure 12) is presently producing structural steel members and storage tanks. Thus, the plant is undoubtedly receiving semifinished steel and carrying on the same activities as it will when completed.

25X

25X

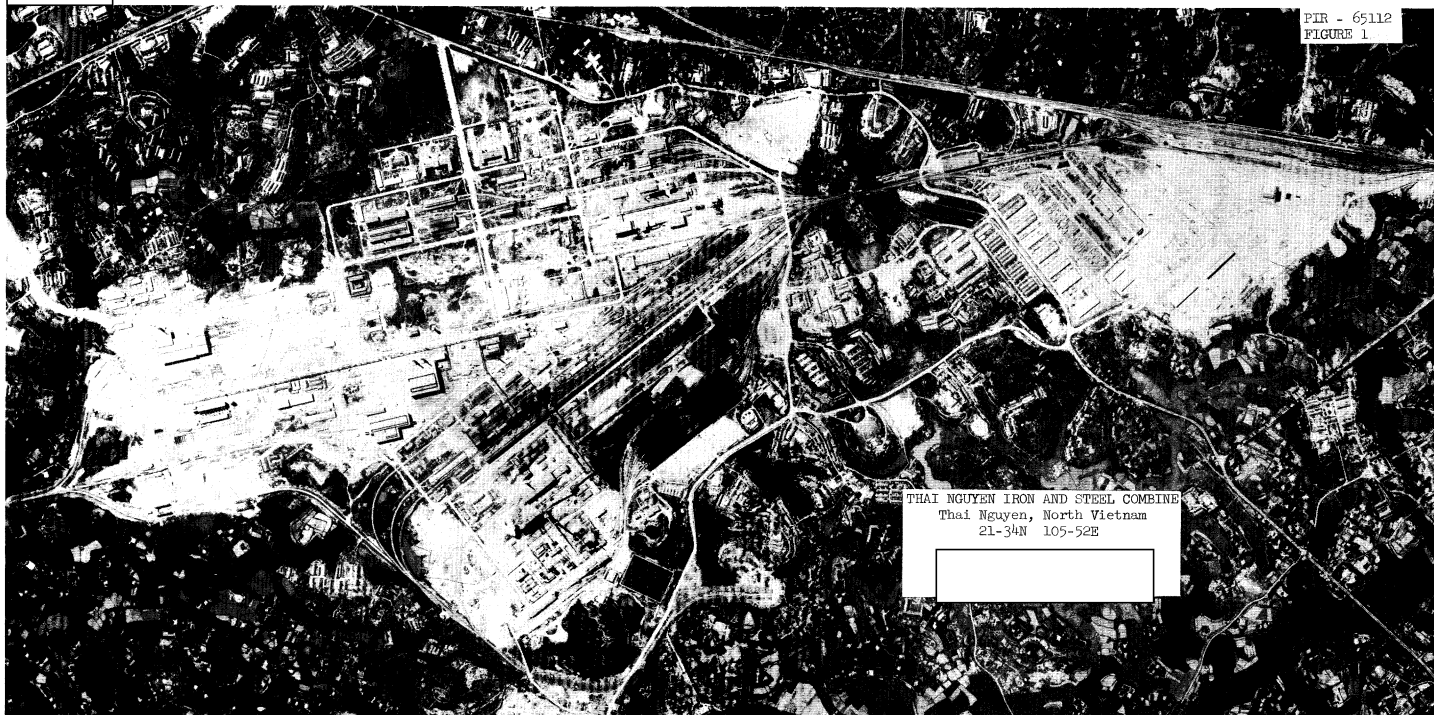
~~CONFIDENTIAL~~



25X

CONFIDENTIAL

25X1



PIR - 65112
FIGURE 1

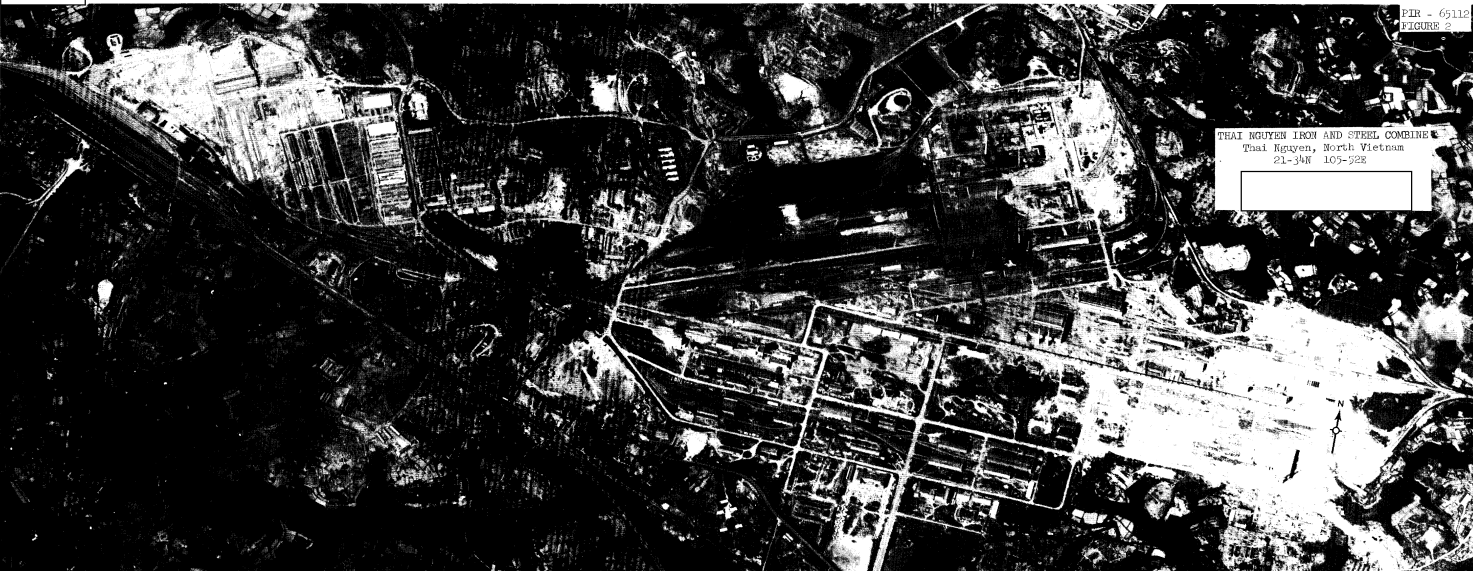
THAI NGUYEN IRON AND STEEL COMBINE
Thai Nguyen, North Vietnam
21-34N 105-52E

25X1

CONFIDENTIAL

25X1

CONFIDENTIAL

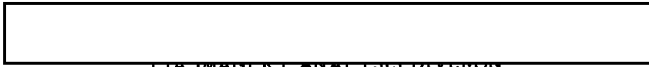


CONFIDENTIAL

CONFIDENTIAL

PIR - 65112

25X1



CIA IMAGERY ANALYSIS DIVISION

TABLE 1

KEY TO ANNOTATIONS

1. Storage/support area.
2. Coal storage area.
3. Stock trestle and iron ore and limestone facilities.
4. Coke by-products section.
5. One coke oven battery.
6. Three blast furnaces.
7. Open hearth furnace building.
8. Sintering plant.
9. Administration area.
10. Fabrication area.
11. Rolling mill under construction.
12. Open fabrication yard.

-2-

CONFIDENTIAL

25X1



CONFIDENTIAL

PIR 65112

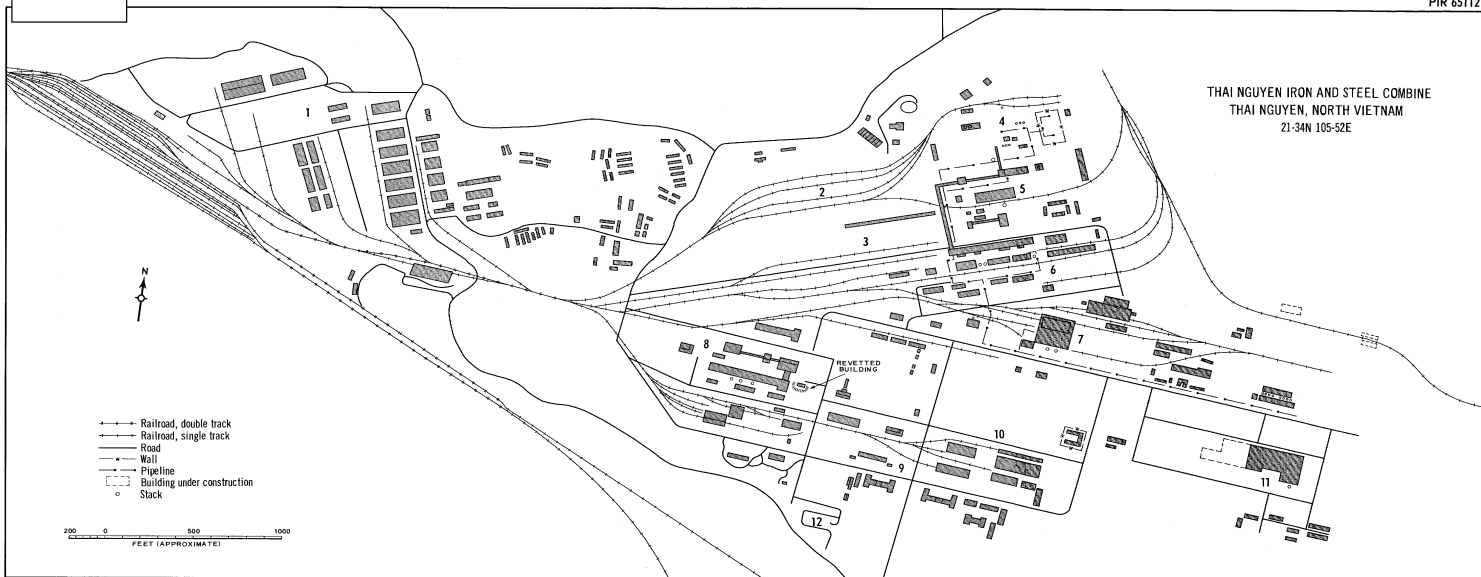


FIGURE 3

CONFIDENTIAL

25X1

~~CONFIDENTIAL~~

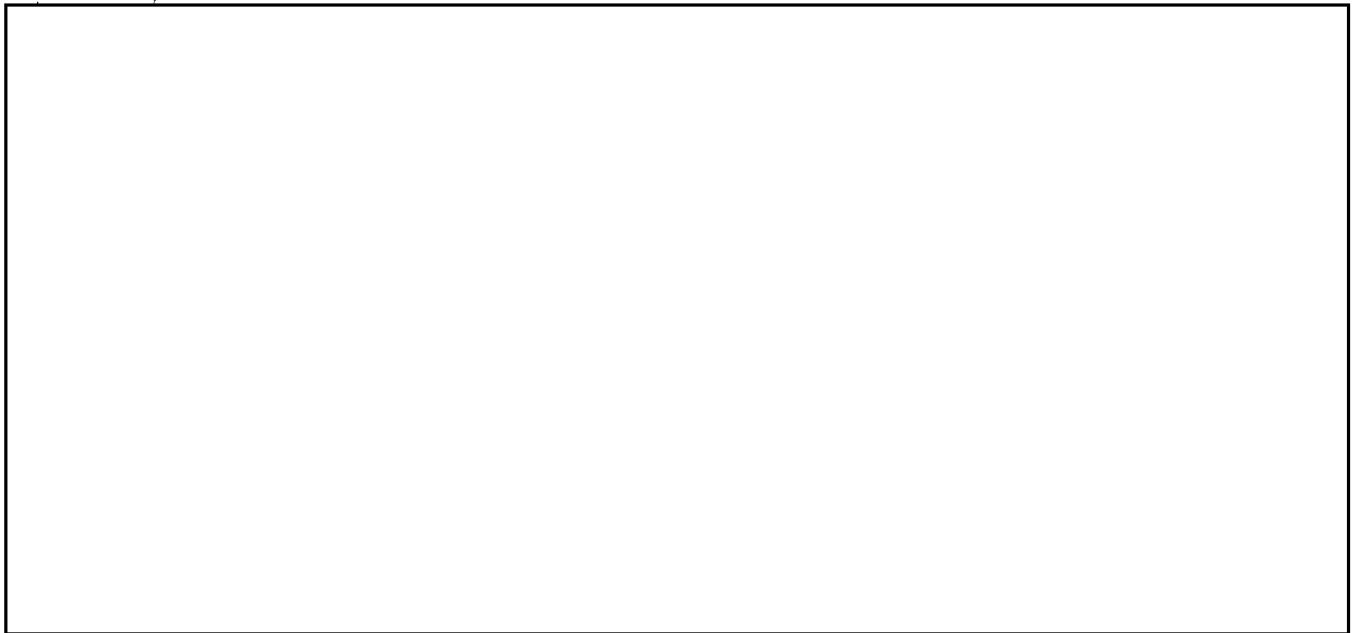


CIA IMAGERY ANALYSIS DIVISION

25X

REFERENCES

25X



MAPS AND CHARTS

AMS, Series L509, Sheet NF 48-11, Scale 1:250,000, 2nd Edition, 1954
(UNCLASSIFIED)

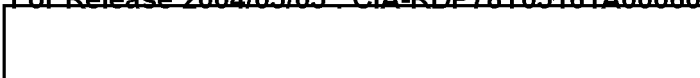
REQUIREMENT

C-RR6-83,481

CIA/IAD PROJECT

30997-6

~~CONFIDENTIAL~~



25X

25X1

Approved For Release 2004/05/05 : CIA-RDP78T05161A000600010042-7

Approved For Release 2004/05/05 : CIA-RDP78T05161A000600010042-7