

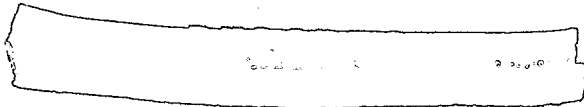
TOP SECRET



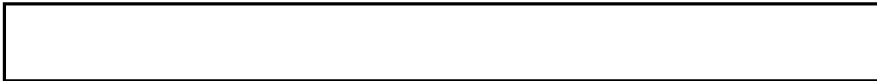
IMAGERY
ANALYSIS
DIVISION

PIR

PHOTOGRAPHIC INTELLIGENCE REPORT



LU-SHUN NAVAL COMPLEX, LU-SHUN, CHINA



Declass Review by NIMA/DOD

25X1



25X1

CIA/PIR 67279



25X1

DATE MAY 1966

COPY

PAGES 7

GROUP 1
Excluded from automatic
downgrading and declassification

TOP SECRET

25X1

Approved For Release 2003/03/04 : CIA-RDP78T05161A000900010084-8

Approved For Release 2003/03/04 : CIA-RDP78T05161A000900010084-8

TOP SECRET

25X1

CIA/PIR-67279

CIA IMAGERY ANALYSIS DIVISION

25X1

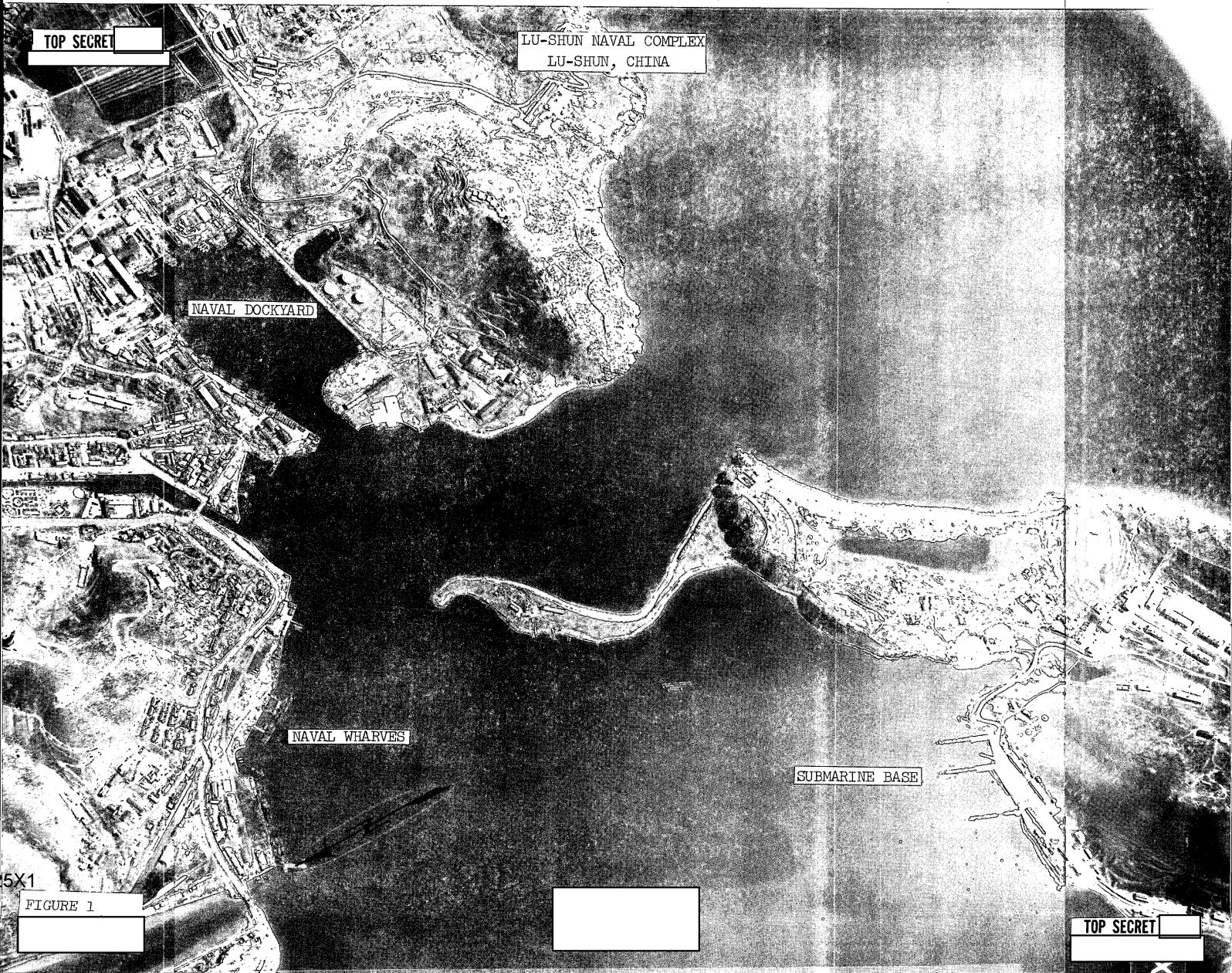
LU-SHUN NAVAL COMPLEX

LU-SHUN, CHINA

25X1

TOP SECRET

25X1



5X1

FIGURE 1

TOP SECRET

TOP SECRET

CIA/PIR-67279

CIA IMAGERY ANALYSIS DIVISION

25X1

FACILITY : LU-SHUN SUBMARINE BASE
LOCATION : LU-SHUN, CHINA
GEO COORDS: 38-47N 121-15E

25X1

KEY TO ANNOTATIONS ON FIGURE 2

25X1

1. Two "W/R" Class SS.
2. "W/R" Class SS.
3. Possible "R" Class SS.
Faint imagery equating to the location of the snorkel induction housing found on "R" Class submarines can be identified on this unit.

25X1

TOP SECRET

TOP SECRET

Approved For Release 2003/03/04 : CIA-RDP78T05161A000900010084-8
LU-SHUN SUBMARINE BASE
LU-SHUN, CHINA
38-47N 121-15E



FIGURE 2

03/03/04 : CIA-RDP78T05161A000900010084-8

TOP SECRET

TOP SECRET

25X1

CIA IMAGERY ANALYSIS DIVISION

CIA/PIR-07279

25X1

25X1

FACILITY : LU-SHUN NAVAL BASE AND DOCKYARD
 LOCATION : LU-SHUN, CHINA
 GEO COORDS: 38-48N 121-16E

KEY TO ANNOTATIONS ON FIGURE 3

1. Probable KAIBOKEN II Class PF (LOA approx 230').
2. US "LSM-1" Class LSM.
3. Possible combatant hull (LOA approx 200'). Superstructure appears to be dismantled. Series of closely spaced faint vertical images along hull centerline suggest this craft may be used as a target barge.
4. SHANGHAI Class PTF (LOA approx 130').
Dual athwartship AA weapons identify this unit as the later version of the SHANGHAI PTF.
5. Three SWATOW Class PGM.
6. Two possible trawler/minesweepers in graving dock (LOA of each approx 100').
7. "T-43" Class MSF.
8. Probable "W" Class SS (visible waterline length approx 250').
This unit appears to be undergoing repair or modification. The deck plating has been removed from approximately 25 feet forward of the sail to 60 feet aft of the sail, with an additional 10 feet being covered by a small weather shed. The purpose of this work is not apparent.
9. Probable "W" Class SS (visible waterline length approx 245').
Work probably similar to that being done on the unit at annotation 8 is being performed on this submarine. Only the 70 feet of the deck plating aft of the sail appears to have been removed on this unit. Area abaft sail of these two submarines appears to be in line with craneway running alongside graving dock.
10. Probable "W" Class SS (visible waterline length approx 250').

25X1

TOP SECRET



TOP SECRET



25X1

CIA/PIR-67279

CIA IMAGERY ANALYSIS DIVISION

11. Two SWATOW Class PGM.
12. US "LST-1" Class LST in graving dock.
13. KRONSTHADT Class PC.
14. KOMAR Class PTG.
15. Nine "P-6" Class PT.
One unit is apparently without armament.
16. OSA Class PTFG.
17. Eighteen "P-4" Class PT.
18. Four unidentified probable YP.

NOTE: All measurements have been made by the CIA/IAD project analyst.

TOP SECRET



25X1

TOP SECRET

Release 2003/06/04 CIA-RDP80-0161A000900010034-8

LU-SHUN, CHINA
38-48N 121-16E

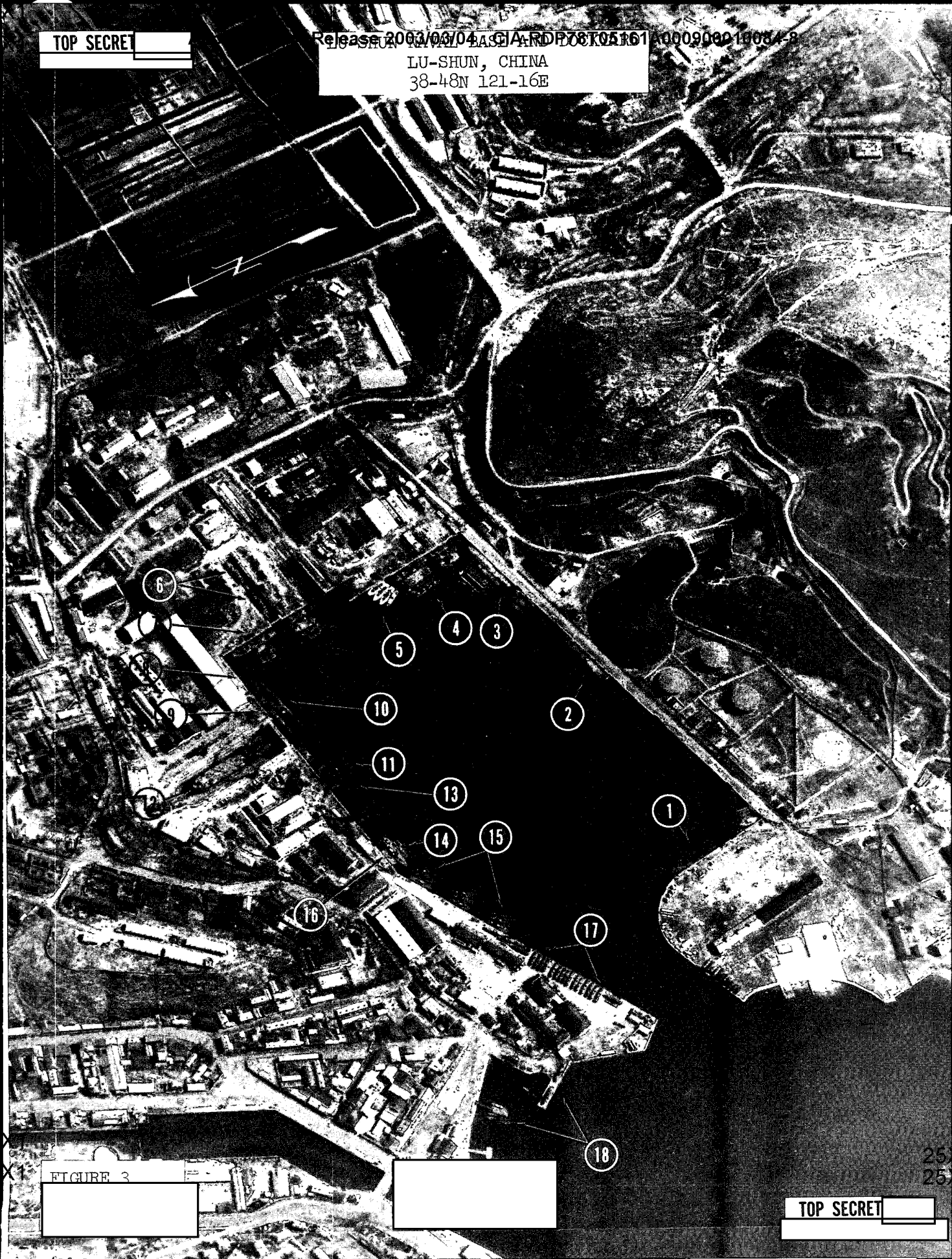


FIGURE 3

TOP SECRET

TOP SECRET

TOP SECRET