

ILLEGIB

Approved For Release 2000/08/04 : CIA-RDP78T05439A000100240102-5

Approved For Release 2000/08/04 : CIA-RDP78T05439A000100240102-5

~~TOP SECRET CHESS~~

PURCHASE

No Pages 4

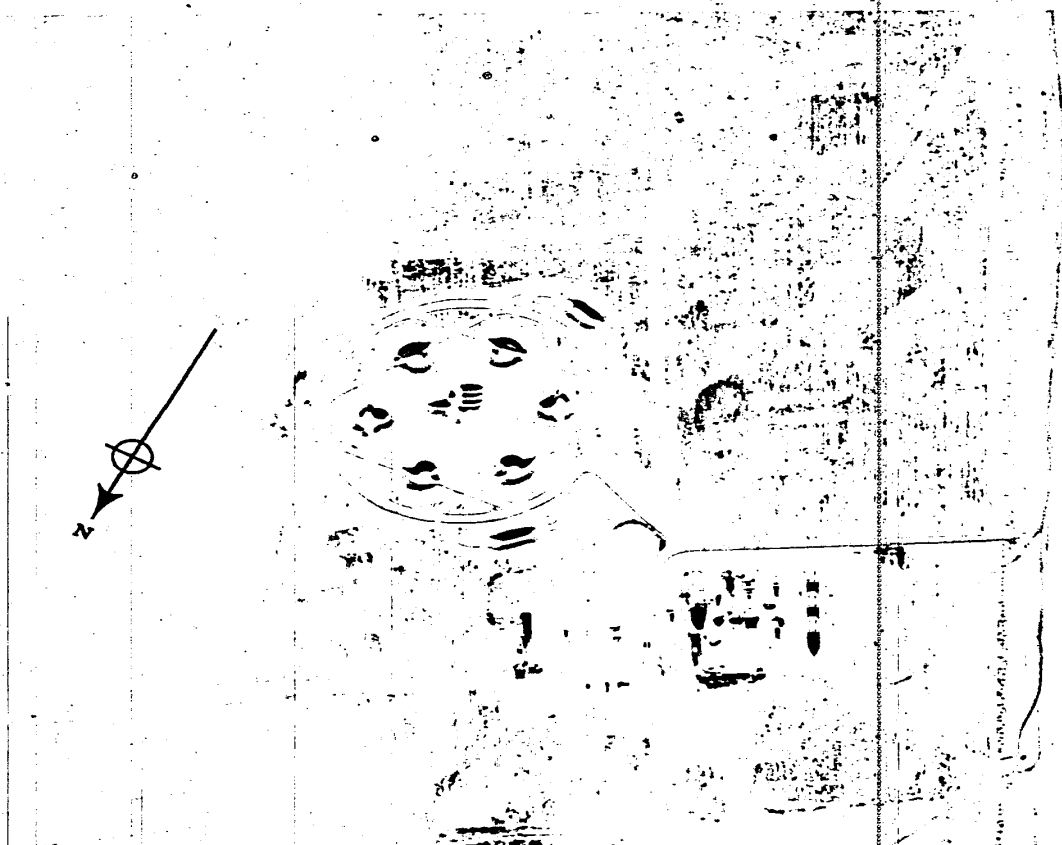
Declassification review by NIMA/DOD

Copy No 46

JOINT PHOTOGRAPHIC INTELLIGENCE BRIEF 004306
ARMY-NAVY-CIA

(Published and Disseminated by CIA/PIC)

SUBJECT : Surface-to-Air Missile Site NO : PIC/JB-38/60
DATE : 28 March 1960
LOCATION : Saratov Area, USSR COORD: 51°36'N 46°29'E



KB
7/10/60

Figure 1. SAM SITE 13 NM ENE OF SARATOV/ENGELS AIRFIELD.

MINICARD COPY

~~TOP SECRET CHESS~~

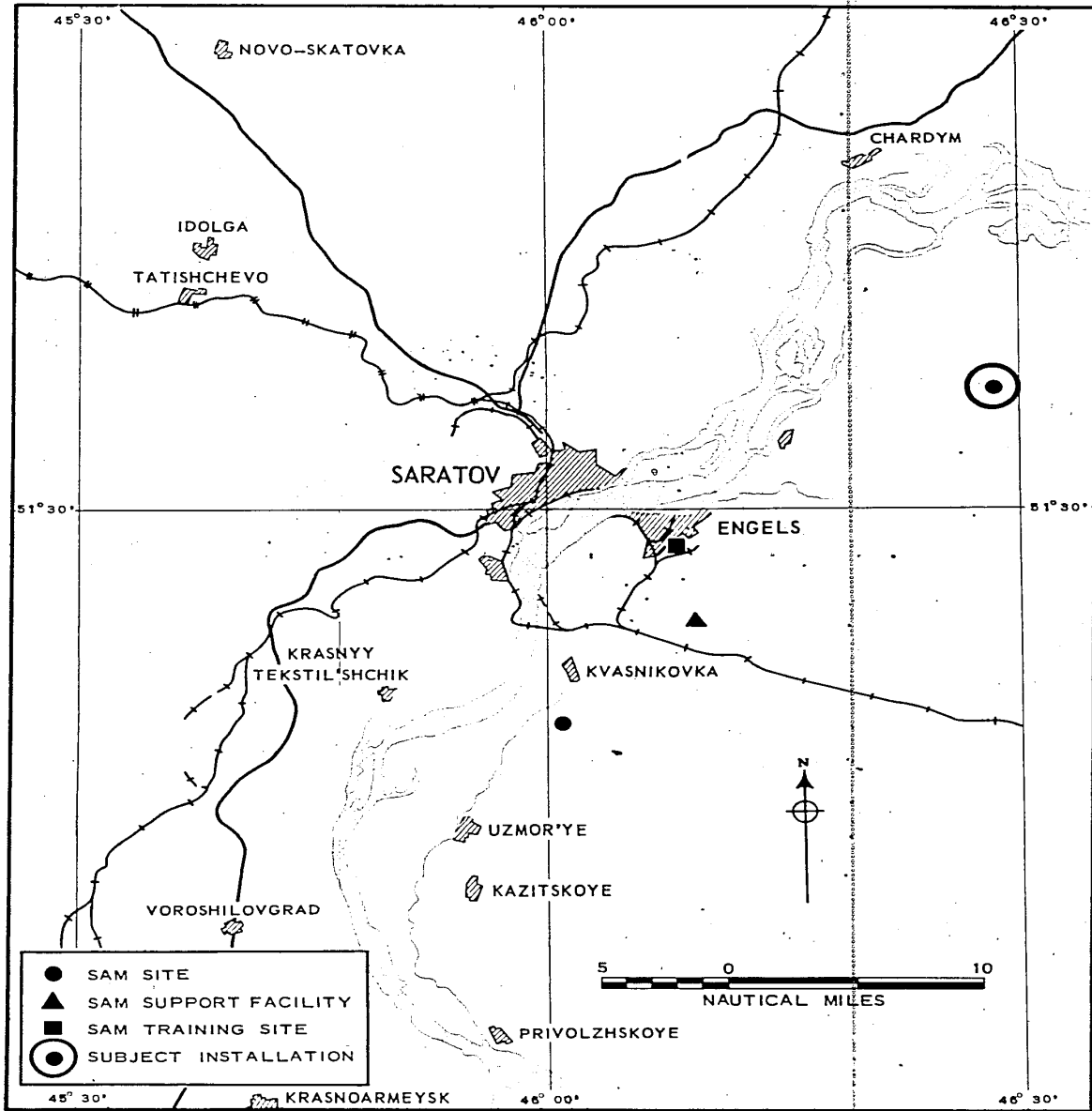


FIGURE 2. SAM SITES AND SUPPORT FACILITIES IN THE SARATOV AREA. Date of information

25X1D

TOP SECRET CHESS

PIC/IB-38/60

25X1A

REFERENCE POINT:

Saratov/Engels Airfield, BE No [REDACTED] 51°29'00"N - 46°11'00"E

LOCATION:

13 nm east-northeast of reference point.

FUNCTION:

One of a group of sites deployed for the defense of Saratov.

SITE STATUS:

Construction complete.

LAUNCH FACILITIES:

Six launch revetments with no launchers emplaced.

MISSILES:

None visible.

ELECTRONICS AND ASSOCIATED EQUIPMENT:

Revetments complete at center of operations area, but no equipment installed.

COMMUNICATIONS:

Possible microwave tower located in support area.
Probable communications antenna located in support area.

OVERHEAD POWER and/or COMMUNICATION LINE:

Overhead wire line leads to site.

TRANSPORTING EQUIPMENT:

Six probable prime movers located in vehicle parking area.

SUPPORT AREA:

Structures

<u>Description</u>	<u>Roof Type</u>	<u>No Stories</u>	<u>Dimensions (feet)</u>
Administration	Gable	2	160 x 50
3 Barracks	Gable	2	60 x 40
2 Support buildings	Gable	1	30 x 30
Support building	Shed	1	40 x 20

TOP SECRET CHESS

PIC/3B-38/60

Support building	Shed	1	30 x 20
Support building	Shed	1	30 x 25
Support building	Shed	1	20 x 15
Support building	Shed	1	15 x 15
Earth-covered bunker	--	-	55 x 50
Earth-covered bunker	--	-	30 x 20
Gate house	Gable	1	30 x 20

Other features include two possible buried tanks 30 feet in diameter, one possible buried tank 20 feet in diameter, and unidentified equipment in open storage.

SECURITY:

Security fence encloses site.
Security fence encloses operations area.

REMARKS:

Site is situated on relatively flat terrain in a predominantly agricultural area.
A SAM support facility 17 nm to the southwest serves the site.

MAP REFERENCES:

WAC 235; AMS-Series N 501, Sheet NM 38-3.

PHOTO DATA:

25X1D