

ILLEGIB

Approved For Release 2000/08/04 : CIA-RDP78T05439A000100240122-3

Approved For Release 2000/08/04 : CIA-RDP78T05439A000100240122-3

~~TOP SECRET CHLSS~~

PUNCHED

No Pages 4

Copy No 15

004328

Declassification review by NIMA/DOD

JOINT PHOTOGRAPHIC INTELLIGENCE BRIEF

ARMY-NAVY-CIA

(Published and Disseminated by CIA/PIC)

SUBJECT : Surface-to-Air Missile Site

NO : PIC/JB-65/60

DATE : 14 April 1960

LOCATION: 9 nm SW of Sarova, USSR

COORD: 54°50'N 43°07'E

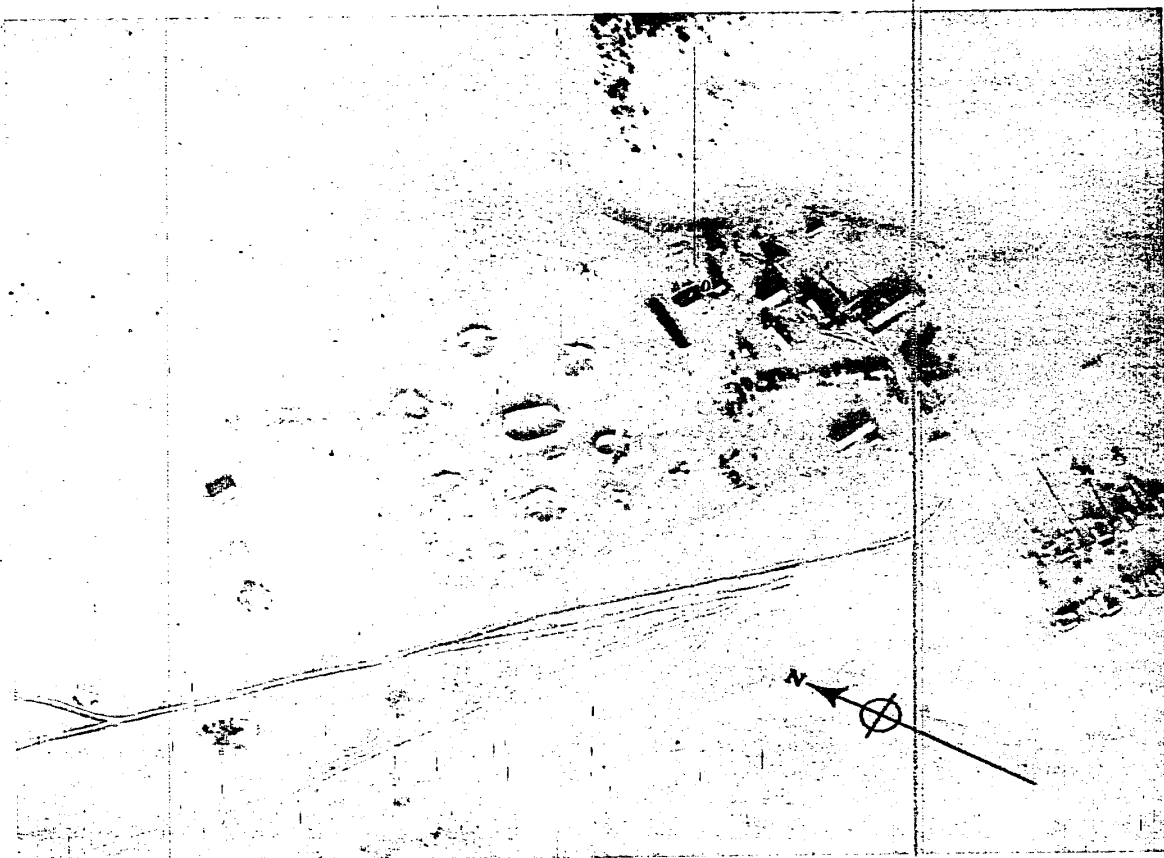


Figure 1. SAM SITE 9 NM SW OF SAROVA.

MINICARD COPY

~~TOP SECRET CHLSS~~

vt
13-6-60

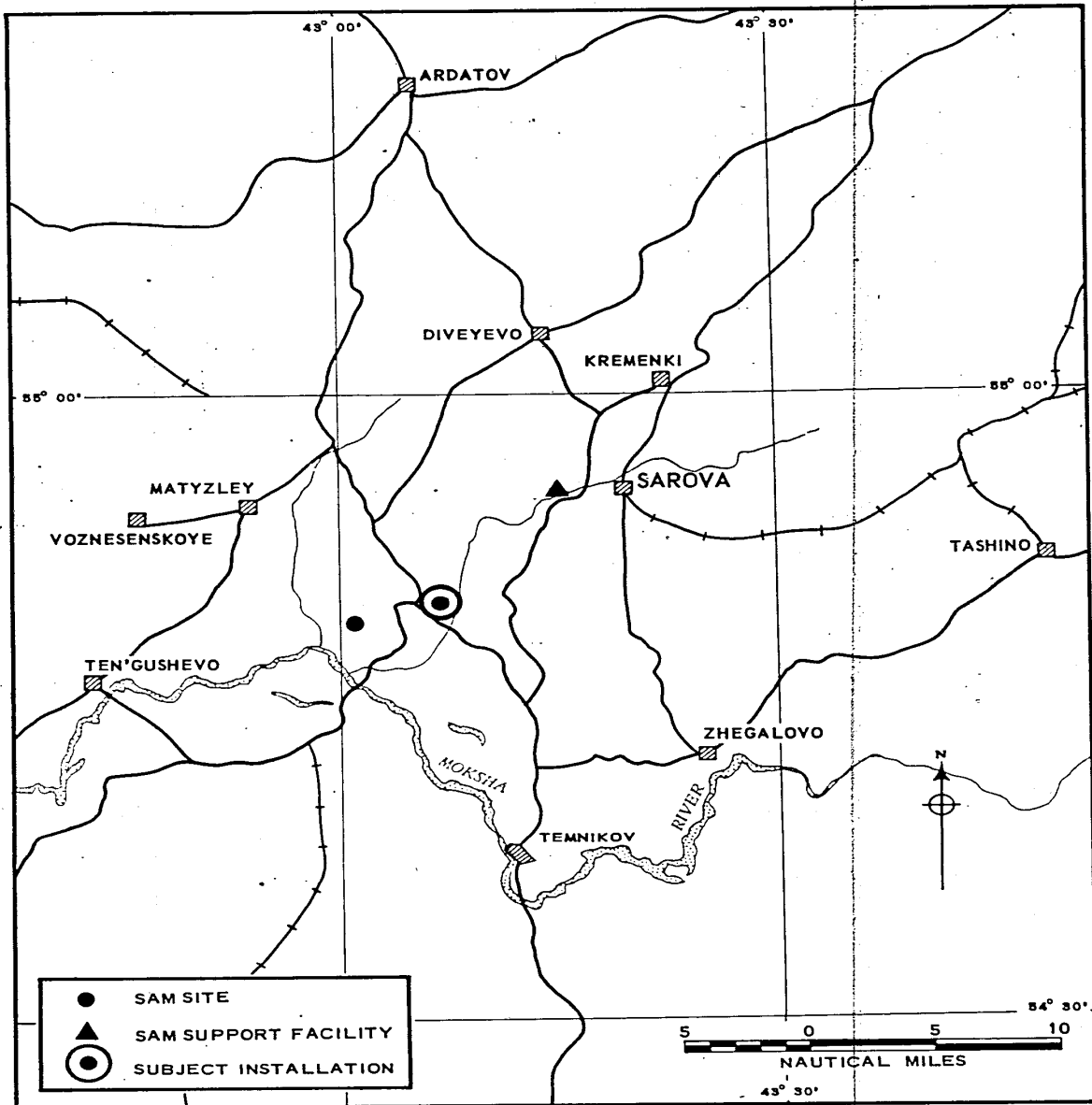


FIGURE 2. SAM SITES AND SUPPORT FACILITIES IN THE SAROVA AREA. Date of information

TOP SECRET CHESS

PIC/JB-65/60

REFERENCE POINT: ^{25X1A}
Sarova, BE No [REDACTED], 54°55'N - 43°19'E.

LOCATION:
9 nm southwest of reference point.

25X2

SITE STATUS:
Late stages of construction.

LAUNCH FACILITIES:
Six launch revetments complete. Launchers not emplaced.

MISSILES:
Six possible canvas-covered missiles on trailers are located in vehicle parking area.

ELECTRONICS AND ASSOCIATED EQUIPMENT:
None visible.

COMMUNICATIONS:
None visible.

OVERHEAD POWER and/or COMMUNICATION LINE:
Overhead wire line probably leads to site.

TRANSPORTING EQUIPMENT:
Six tractors and six missile trailers located in vehicle parking area.
Thirteen unidentified vehicles located in vehicle parking area.

SUPPORT AREA:
Structures

<u>Description</u>	<u>Roof Type</u>	<u>No Stories</u>	<u>Dimensions (ft)</u>
Administration	Gable	2	150 x 60
Probable barracks	Gable	2	115 x 45
Support building	Gable	2	85 x 55

TOP SECRET CHESS

PIC/JB-65/60

Support building	Gable	2	85 x 45
Support building	Gable	1	70 x 50
2 Support buildings	Gable	1	35 x 30

Other features include several small miscellaneous support buildings and one possible buried tank.

SECURITY:

Security fence encloses site.
Security fence probably encloses operations area.

REMARKS:

Site is situated on rolling terrain near a forested area.
An abandoned 8-gun AA position is located at the westernmost corner of operations area.
A SAM support facility 6.5 nm to the northeast serves the site.

MAP REFERENCES:

WAC 166; AMS-Series N 501, Sheet NN 38-4.

PHOTO DATA:



25X1D