

ILLEGIB

Approved For Release 2000/08/04 : CIA-RDP78T05439A000100240137-7

Approved For Release 2000/08/04 : CIA-RDP78T05439A000100240137-7

Declassification review by NIMA/DOD

JOINT PHOTOGRAPHIC INTELLIGENCE BRIEF
ARMY-NAVY-CIA

(Published and Disseminated by CIA/PIC)

SUBJECT : Surface-to-Air Missile
Support Facility

NO : PIC/JB-84/60
DATE : 26 April 1960

LOCATION : 6 nm south of Magnitogorsk,
USSR

COORD: 53°20'N 59°04'E

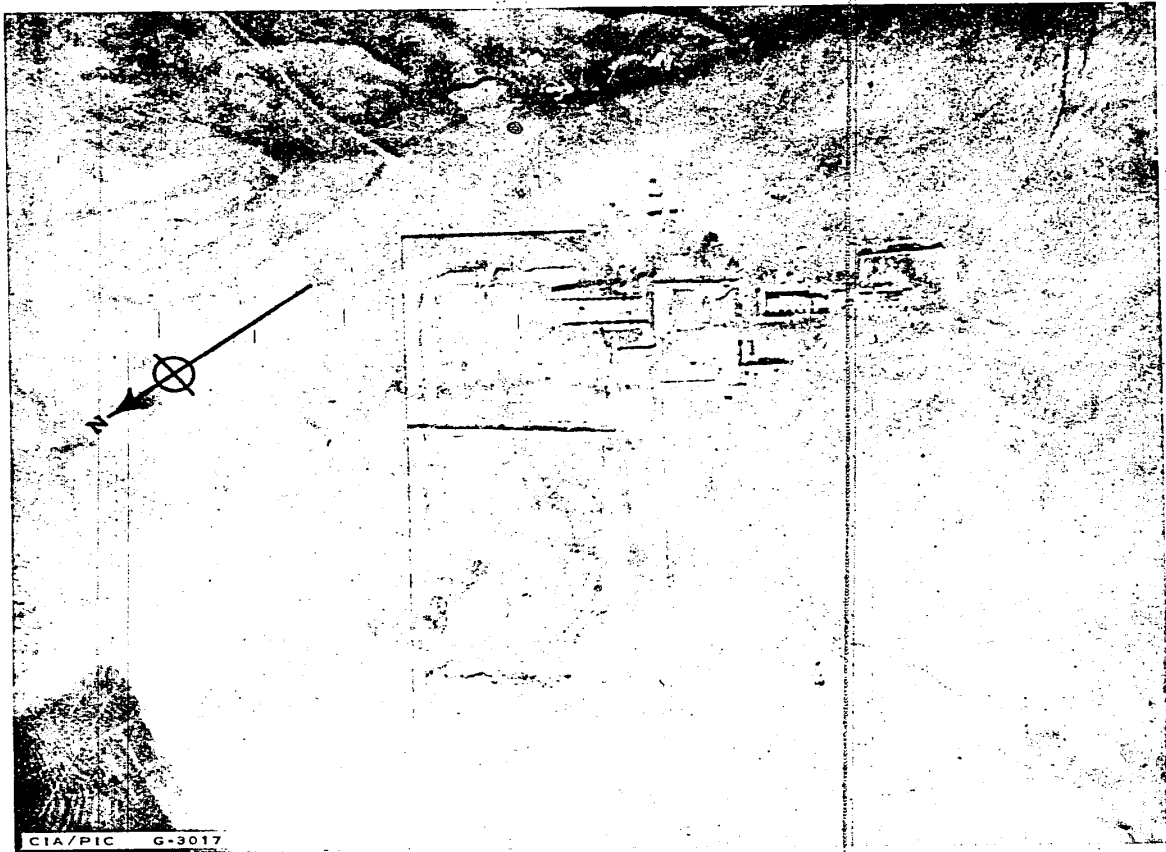


Figure 1. SAM SUPPORT FACILITY 6 NM SOUTH OF MAGNITOGORSK.

MINICARD COPY

Handwritten initials and date:
15-6-60

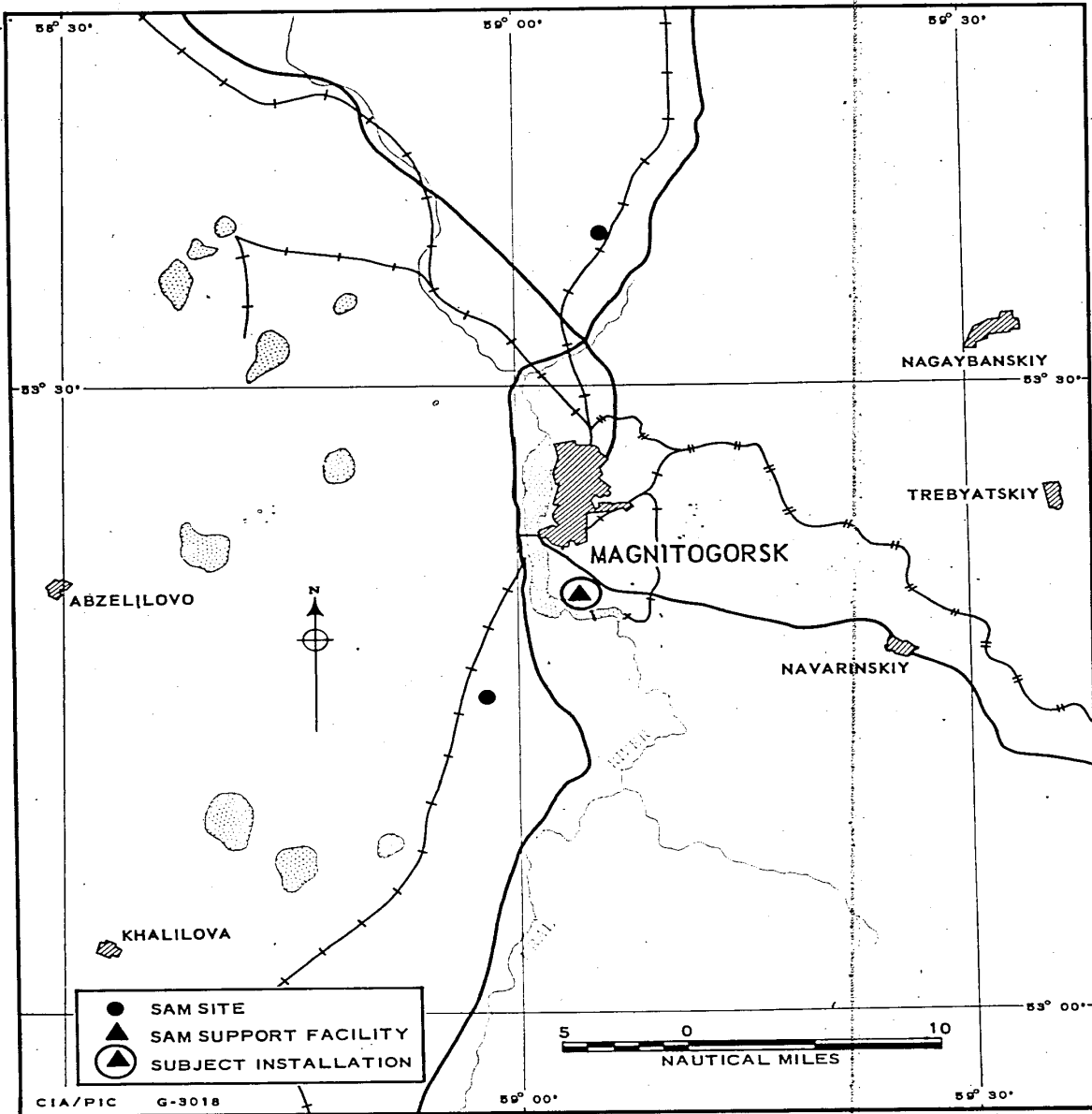


FIGURE 2. SAM SITES AND SUPPORT FACILITIES IN THE MAGNITOGORSK AREA.
Date of information [REDACTED]

TOP SECRET CHESS

PIC/JB-84/60

25X1A

REFERENCE POINT:

Magnitogorsk RR Yards, Main, BE No [REDACTED], 53°26'20"N -
59°04'16"E.

LOCATION:

6 nm south of reference point.

FUNCTION:

This support facility will serve SAM sites deployed for the defense
of Magnitogorsk.

SITE STATUS:

Early stage of construction.

REMARKS:

This facility is situated on gently rolling terrain.
Initial construction of the service roads, checkout/maintenance
building and two support buildings has begun. A security fence,
probably will enclose the facility and a board fence probably will
enclose the missile assembly/checkout area.
An anti-aircraft garrison containing five probable SAM transporters
is located 1.5 nm southeast of the facility.

MAP REFERENCES:

WAC 164; AMS-Series N 501, Sheet NN 40-9.

PHOTO DATA:

[REDACTED]

25X1D