

Approved For Release 2001/08/20 : CIA-RDP78T05439A000200010001-1

ILLEGIB

Approved For Release 2001/08/20 : CIA-RDP78T05439A000200010001-1

~~TOP SECRET - EYES ONLY~~

INSTALLATION: KENNEDY AIRFIELD
LOCATION: KENNEDY
COUNTRY: STERIA

25X1A

TDI NUMBER: None

COORDINATES: 36° 31' 26" N / 037° 02' 20" W
PHOTO COVER: 100% Stereo Coverage

MISSION NUMBER	DATE	CAN FOR	EXPOSURE NUMBERS	SCALE	QUALITY
[REDACTED]					

25X1D

GRANT REFERENCE: USAF AAG (361 C IV)0, 1st Ed, Aug 55

PAGE 2 OF 6 PAGES
COPY BA 7 OF 17 COPIES CONTROL NUMBER: 247-3-05633
L8126242

~~TOP SECRET - EYES ONLY~~

Declass Review NIMA/DoD

TOP SECRET GIBBS

REQUIREMENT:

As directed by Hqs SAC TI, BOP, dtd 1 Jun 59, as amended.

SUMMARY:

This is a class V airfield. The runways could be extended approximately 3000' to the E and NW. There is no evidence of activity on this airfield.

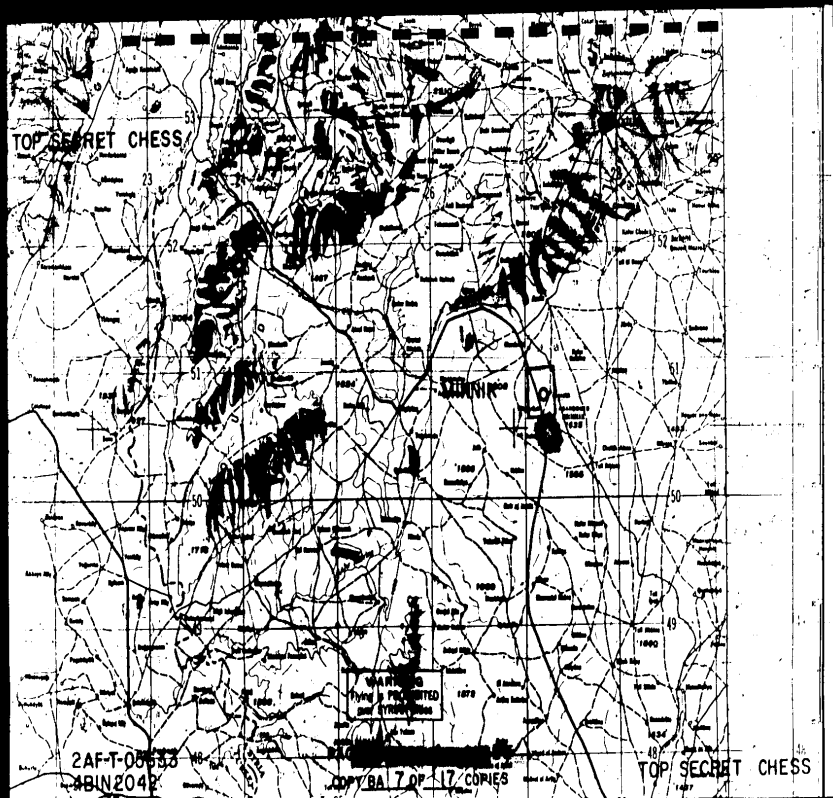
DETAILED REMARKS:

This airfield is located 2000/3000' from the city of Haleb.
Elevation is 1635 feet.

PAGE 3 OF 5 PAGES

COPY 24 7 OF 17 COPIES CONTROL NUMBER: 24P-7-05533
18182012

TOP SECRET GIBBS



TOP SECRET

2. RUNWAYS AND LANDING AREAS:

- a. Runways: Approximately 3000'x2000' 020°/200° concrete surface (Annot 1)
Approximately 3000'x2000' 090°/270° concrete surface (Annot 1)
Concrete perimeter taxiway

b. Landing Areas: None.

3. AIRCRAFT ACTIVITY: None.

4. FUEL STORAGE AREA: 2 refueling loops (Annot 3).

1. DISPOSAL AREA: 21 concrete hardstands, 10 of which are revetted. 4 parking aprons (Annot 4).

5. ASSOCIATED AIRFIELD BUILDINGS: Probable military housing area (Annot 5).

6. REFUGES: None.

7. ELECTRICITY: Unknown.

8. TRANSPORTATION FACILITIES: Served by primary road.

9. GENERAL:

a. Airfield Name and Coordinates:

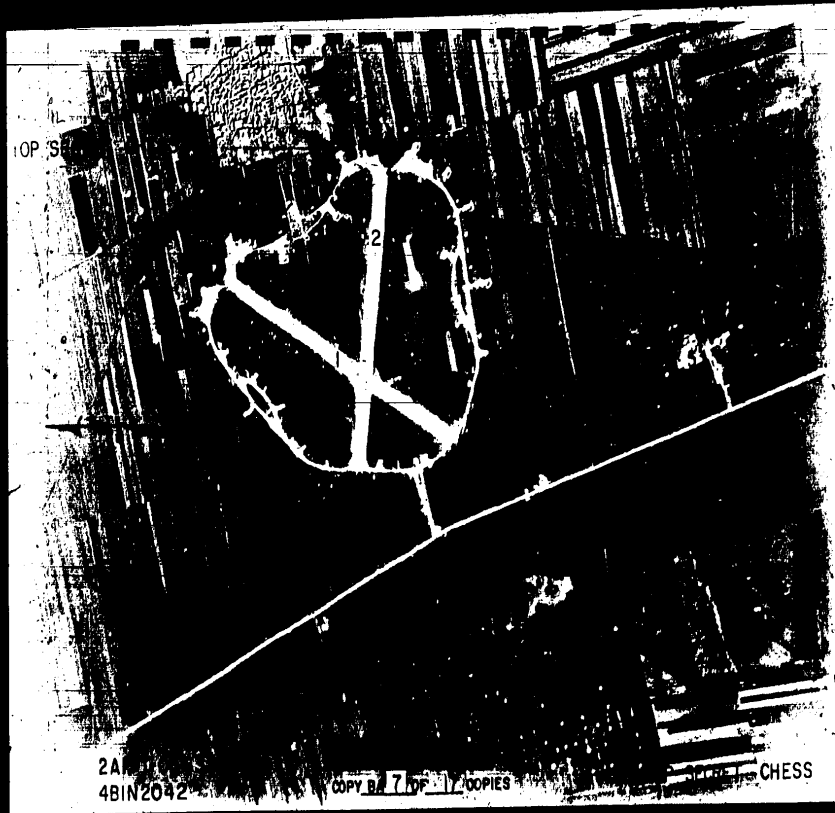
(1) Airfield name was taken from AFB Vol I, May 61.

(2) Coordinates were taken from USAF AIG (NAI C IV)G.

PAGE 5 OF 6 PAGES

COPIES 7 OF 37 COPIES

CONTROL NUMBER: 217-1-0503
LHLP204



TOP S

2

2A
4BIN2042

COPY BY 7 OF 17 COPIES

SECRET - CHESS