

ILLEGIB

~~TOP SECRET~~

Copy **69**
3 Pages

CIA/PIR-4/63
May 1963

MINICARD COPY

CENTRAL INTELLIGENCE AGENCY
PHOTOGRAPHIC INTELLIGENCE REPORT

**PUNCHED
VERIFIED**

EGYPTIAN MISSILE LAUNCH AND
TEST INSTALLATION

5-8942



DECLASSIFICATION REVIEW by NIMA/DOD 3/14/00

Handle Via **TALENT - KEYHOLE** Control Only

WARNING

This document contains classified information affecting the national security of the United States within the meaning of the espionage laws U. S. Code Title 18, Sections 793 and 794. The law prohibits its transmission or the revelation of its contents in any manner to an unauthorized person, as well as its use in any manner prejudicial to the safety or interest of the United States or for the benefit of any foreign government to the detriment of the United States. It is to be seen only by personnel especially indoctrinated and authorized to receive TALENT-KEYHOLE information. Its security must be maintained in accordance with KEYHOLE and TALENT regulations.

BRC 8/8/63

Published and Disseminated by

NATIONAL PHOTOGRAPHIC INTERPRETATION CENTER

~~TOP SECRET~~

GROUP 1
Excluded from automatic
downgrading and declassification

EGYPTIAN MISSILE LAUNCH AND TEST INSTALLATION

A missile launch and test installation has been identified from KEYHOLE photography 33 nautical miles (nm) west-northwest of Cairo at 30-09-00N 30-37-30E (Figure 1). The installation is located 10 nm by air west-southwest of the abandoned Gebel Hamzi Airfield. An all-weather road leads from the Cairo-Alexandria highway (Desert Road) at the abandoned airfield and terminates at the test facility (Figure 2). The installation was not present on TALENT photography of [REDACTED]

The launch point consists of a circular pad 125 feet in diameter (Figure 3). To the northeast are two assembly/checkout buildings; a third, indistinct, structure is adjacent to the road. Several scarred patterns around the buildings may indicate construction of additional support facilities. Ground support equipment cannot be identified from the small-scale photography.

An oval road pattern northwest of the launch pad appears to enclose a mounded area, which

25X1D

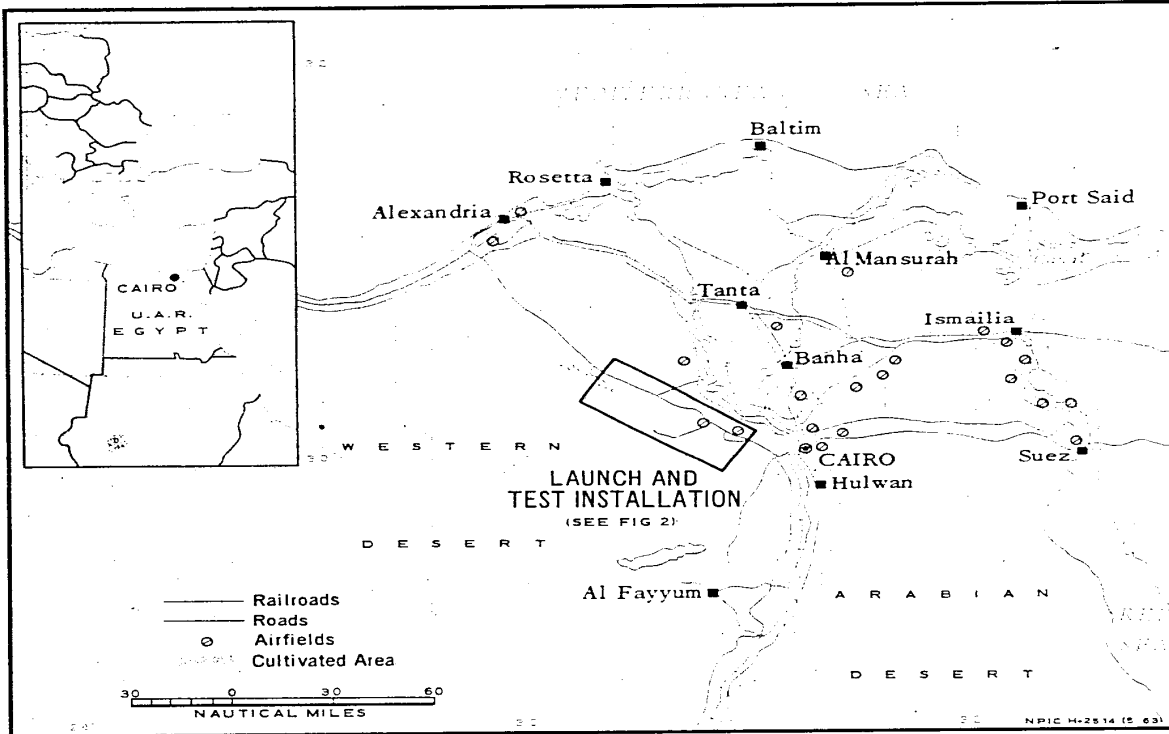


FIGURE 1. LOCATION OF MISSILE LAUNCH AND TEST INSTALLATION.

TOP SECRET CHESS RUFF

CIA/PIR-4/63

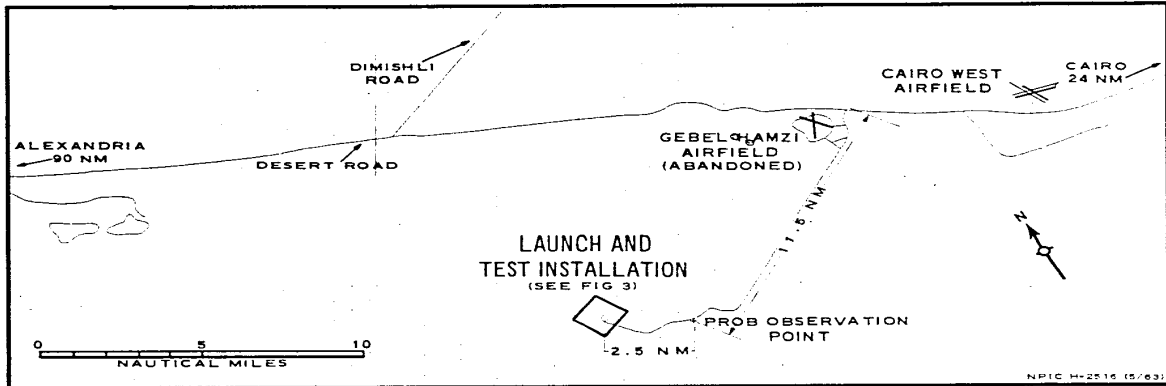


FIGURE 2. GENERAL AREA OF INSTALLATION.

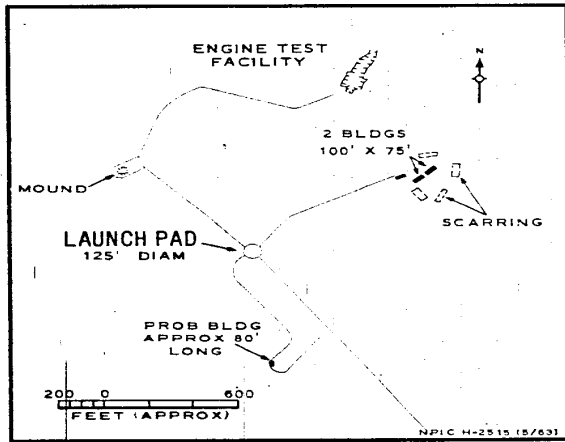
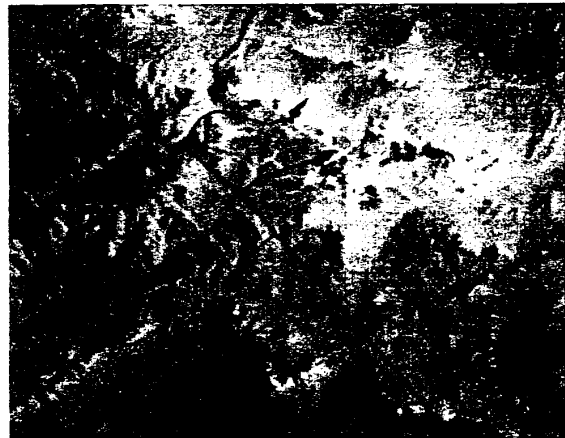


FIGURE 3. MISSILE LAUNCH AND TEST INSTALLATION



25X1D

may be utilized as a control bunker. South of the launch pad a branch road serves a probable drive-through building. An engine test facility is located on a ridge north-northeast of the launch pad. A cut 350 to 400 feet long and about 150 feet wide at the upper end has been made in the ridge. The existence of a test stand cannot be determined.

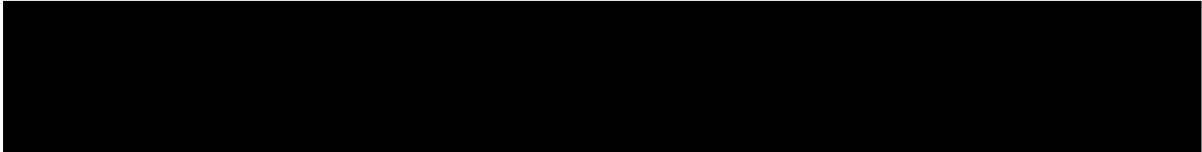
Approximately 2.5 nm southeast of the

launch pad is a small scarred area adjacent to the road. This area may serve as an observation point for viewing missile launchings.

A search extending in an arc approximately 60 nm from the northwest to the southwest of the test facility revealed no impact areas or down-range instrumentation. No other launch positions or support facilities that might be associated with this test facility were observed.

REFERENCES

25X1D



MAPS OR CHARTS

AMS. Series P 502, Sheet NH 36-5, 3d ed, Apr 61, scale 1:250,000 (UNCLASSIFIED)

ACIC. US Air Target Chart, Series 200, Sheet 0447-11AL, 1st ed, May 61, scale 1:200,000 (SECRET)

REQUIREMENT

CIA. OSI-1/63