

ILLEGIB

Approved For Release 2000/09/14 : CIA-RDP78T05439A000200410084-6

Next 3 Page(s) In Document Exempt

Approved For Release 2000/09/14 : CIA-RDP78T05439A000200410084-6

~~TOP SECRET CHSS RUFF~~

NO FOREIGN DISSEM

1

PHOTOGRAPHIC INTERPRETATION REPORT

S-7151

# TEN AIRFIELDS IN CHINA AND TIBET

NPIC/R-220/63  
September 1963

NATIONAL PHOTOGRAPHIC INTERPRETATION CENTER

Declassification review by NIMA/DOD

~~TOP SECRET CHSS RUFF~~

NO FOREIGN DISSEM

# TOP SECRET CHESS RUFF

NO FOREIGN DISSEM

NPIC/R-220/63

## INTRODUCTION

This report, NPIC Project J-47/63, is submitted in response to CIA Requirement ORR/45/63. It presents the best current information on ten selected airfields in Tibet and Western China. The photography\* utilized represents the latest good coverage for each target.

The information on each airfield provides, where quality permits, runway length, width, surface composition and condition; the location of primary support buildings; other installations; types of aircraft, if any were observed on the photography; and each airfield's approximate

elevation above sea level.

The areas listed below were also searched for the existence of reported airfields but none were observed on available photography.

1. Chamdo (31-05N 097-15E).
2. Ka~~f~~-tzu (31-38N 100-00E).
3. Tash Kurghan (Pu-li) (37-48N 075-10E).
4. Rudog (33-27N 079-42E).
5. Tashigong (32-32N 079-41E).
6. Gartok (31-45N 080-22E).
7. Zhikatse (29-17N 088-54E).
8. Gyantse (28-57N 089-38E).
9. Tsona Dzong (28-00N 091-58E).
10. Tingri Dzong (28-35N 086-38E).

25X1C

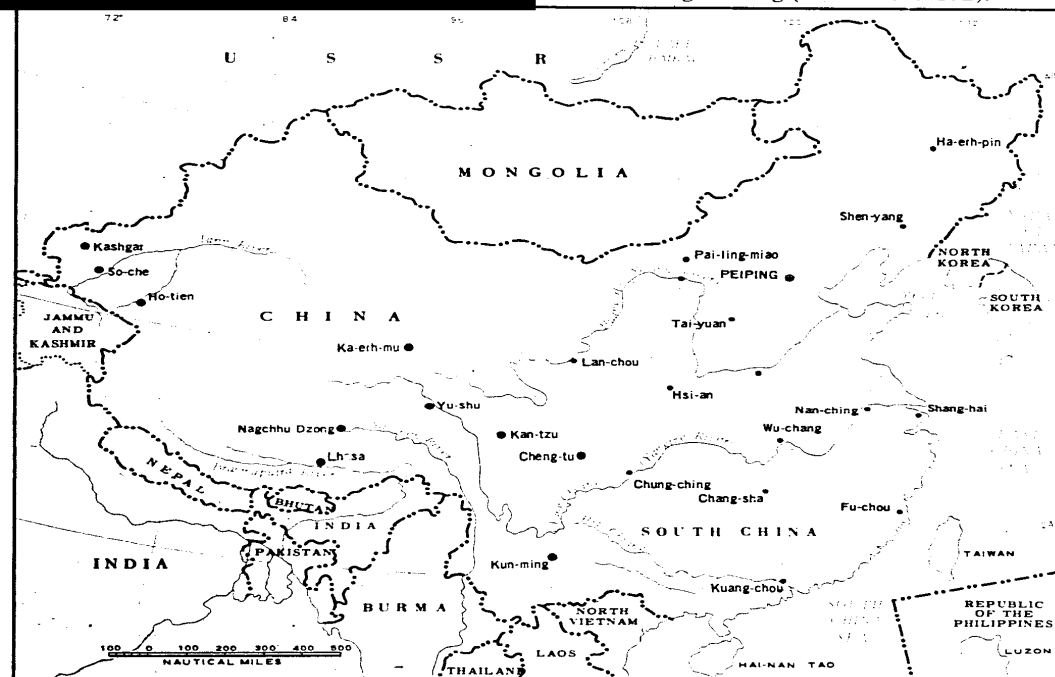


FIGURE 1. LOCATION MAP OF 10 AIRFIELDS IN CHINA AND TIBET.

- 1 -

# TOP SECRET CHESS RUFF

NO FOREIGN DISSEM

**TOP SECRET CHESH RUFF**

NO FOREIGN DISSEM

NPIC/R-220/63

**CHENG-TU/WEN-CHIANG AIRFIELD, CHINA**

25X1A

25X1D

The Cheng-tu/Wen-chiang Airfield, 6.7 nm NW of Cheng-tu at 30-43N 103-57E and just west of the Cheng-tu airframe plant, has an 8,200 x 200 ft, NNE/SSW, hard surfaced runway. First observed on [REDACTED] it was in an early stage of construction. Presently in a late stage of construction [REDACTED] it will probably be utilized as a fly-away airfield for the plant. Facilities include two loop taxiways to the east, one still under construction; a possible GCA system 2,400 ft south of the runway center; a possible communications center in the NW corner of the airfield; an aircraft engine test revetment under construction and a new hangar NE of the runway and NW of the airframe plant;

25X1D

and a POL storage area containing five buried tanks immediately north of the airframe plant. All administration and support facilities are part of the airframe plant.

25X1D

Photography on [REDACTED] revealed no aircraft.

The airfield is approximately 1,700 ft above mean sea level.

**REFERENCES**

25X1D

[REDACTED]  
MAPS AND DOCUMENTS: AMS Series L500, Sheet NH 48-6, 1st ed (U)  
ASSOTW, Vol 31, Apr 61 (SECRET)



FIGURE 2. CHENG-TU/WEN-CHIANG AIRFIELD [REDACTED]

NPIC H-4408 (9/63)

25X1D

NO FOREIGN DISSEM

**TOP SECRET CHESS RUFF**

NO FOREIGN DISSEM

NPIC/R-220/63

**KASHGAR/ZANG KARAVUL AIRFIELD, CHINA**

25X1A

Kashgar/Zang Karavul Airfield, 5 nm north of Su-fu (Kashgar) at 39-32N 076-00E, has a serviceable, 4,500 x 150 ft, WNW/ESE, graded earth runway with a parallel taxiway and five hardstands on the SSW side. An administration building, ten support buildings, and a secured open storage area are also on the SSW side.

25X1D  
25X1D

Since TALENT photography of [REDACTED] three new areas have been constructed near the airfield. The first (Area A), just SW, contains eight possible barracks and 18 probable support buildings. The second (Area B), one nm WSW, includes a large secured area and six possible storage-type buildings, one inside the secured area and five outside it. The

third (Area C), a possible barracks area one nm SSW, contains 26 possible barracks and approximately 25 other probable buildings.

Large barracks areas were also found SE of Su-fu.

No aircraft were observed.

The airfield is approximately 4,000 ft above mean sea level.

REFERENCES

25X1D

MAPS AND DOCUMENTS: USATC Series 335-2AL, 1st ed, Dec 60 (SECRET)  
ASSOTW, Vol 31, Dec 58 (SECRET)

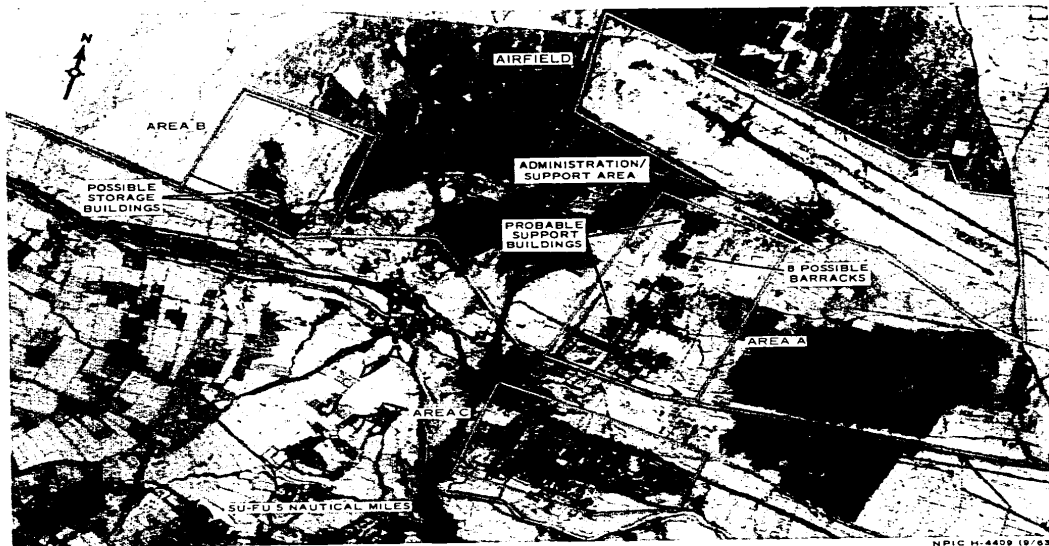


FIGURE 3. KASHGAR/ZANG KARAVUL AIRFIELD [REDACTED] 25X1D

- 3 -

**TOP SECRET CHESS RUFF**

NO FOREIGN DISSEM

**TOP SECRET CHESS RUFF**  
NO FOREIGN DISSEM

NPIC/R-220/63

**KAN-TZU AIRFIELD, CHINA**

25X1A

25X1D

25X1D

Kan-tzu Airfield, approximately 1.5 nm east of Kan-tzu at 31-37N 099-55E, has a serviceable, 10,550 x 260 ft, ESE/WNW runway with a probable crushed rock surface. Facilities include five administrative or support and one probable maintenance building, all immediately north of the runway center. Photography of [REDACTED] revealed activity underway probably to extend the runway 1,200 ft at its WNW end. A probable military camp with approximately 30 buildings was observed one nm SSW of the run-

way center on an abandoned runway.

No aircraft were observed.

The airfield is approximately 11,500 ft above mean sea level.

REFERENCES

25X1D

MAPS AND DOCUMENTS: USATC Series 200, Sheet 0436-4, 1st ed, Oct 60 (SECRET)  
ASSOTW, Vol 31, Sep 60 (SECRET)

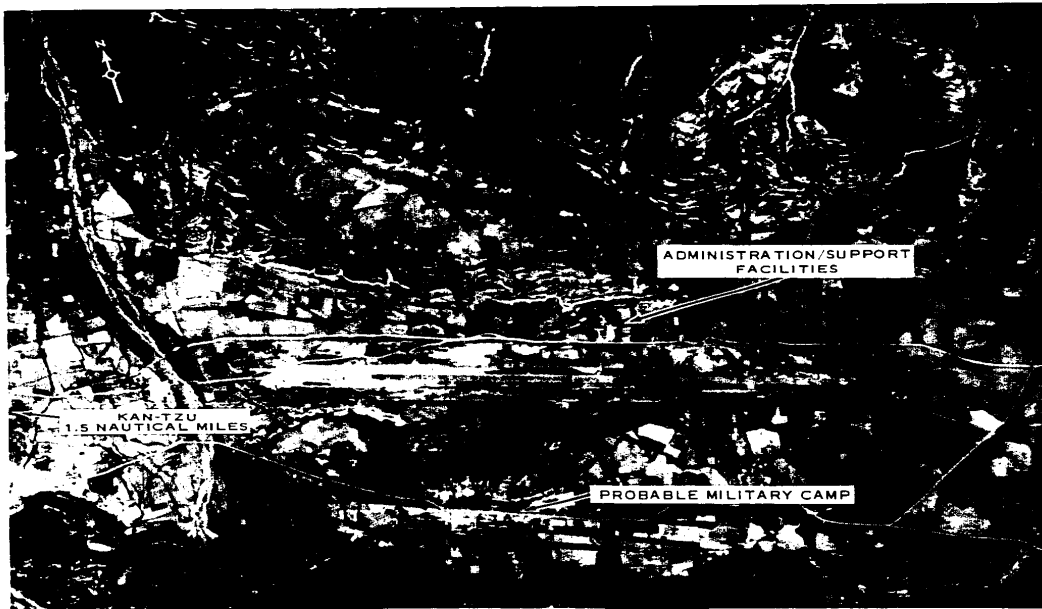


FIGURE 4. KAN-TZU AIRFIELD

NPIC H-4410 (9/63)

25X1D

**TOP SECRET CHESS RUFF**

NO FOREIGN DISSEM

NPIC/R-220/63

**SO-CHE AIRFIELD, CHINA**

25X1A

So-che Airfield, 5 nm NE of So-che at 38-25N 077-17E, has a 5,400 x 1,350 ft, NE/SW, sod landing strip. Facilities include three probable support buildings immediately north of the landing area and one possible support building adjacent to the SW edge.

The airfield is approximately 4,400 ft above mean sea level.

REFERENCES

25X1D

25X1D

No aircraft were observed on the photography of [REDACTED]. Small scale and haze preclude a detailed interpretation.

MAPS AND DOCUMENTS: AMS Series 1301, Sheet NJ 43, 4th ed, 1955 (U)  
USATC Series 200, Sheet 0335-8A, 1st ed, Jun 60 (SECRET)

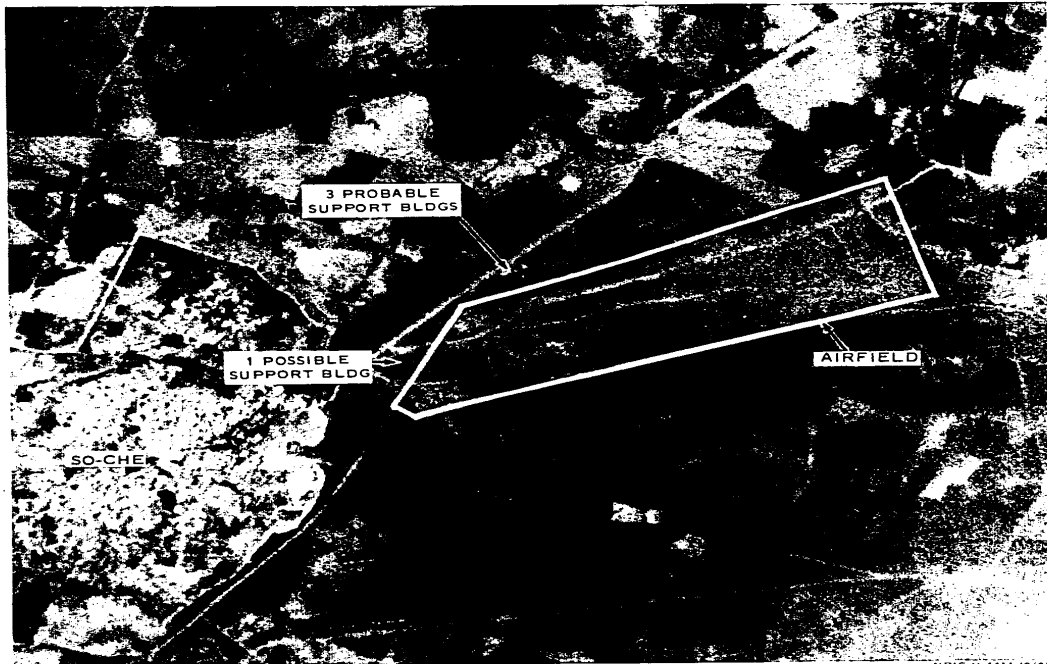


FIGURE 5. SO-CHE AIRFIELD [REDACTED]

NPIC W-4411 (8/63)

25X1D

- 5 -

**TOP SECRET CHESS RUFF**

NO FOREIGN DISSEM

**TOP SECRET CHESS RUFF**

NO FOREIGN DISSEM

NPIC/R-220/63

**KUN-MING AIRFIELD, CHINA**

25X1A

Kun-ming Airfield, 3.7 nm SE of Kun-ming at 25-00N 102-45E, has a 9,800 x 200 ft, NE/SW, hard-surfaced (probably concrete), primary runway with a 1,250 ft overrun at the SW end; a 6,500 x 175 ft parallel runway immediately NW now used for parking; a parallel taxiway connected by five links to the primary runway; an assembly apron at the NE end of the shorter runway; three parking aprons on the north side of the field; and two loop taxiways, one to the north and one to the east. Other facilities include a combination control tower and administration building, repair and maintenance hangars, a 2,500 x 950 ft secured administration and housing area

to the NE containing approximately 80 buildings, a probable instrument landing system, a motor pool, and POL storage.

25X1D

Photography on [REDACTED] revealed 22 FAGOT, 5 FRESCO, 2 CAB, 2 COLT, and 2 COACH.

The airfield is approximately 6,220 ft above mean sea level.

REFERENCES

25X1D

[REDACTED]  
MAPS AND DOCUMENTS: USATC Series 200, Sheet 0496-17A, 1st ed, Sep 59 (SECRET)  
ASSOTW, Vol 31, Jan 59 (SECRET/No Foreign Dissem)

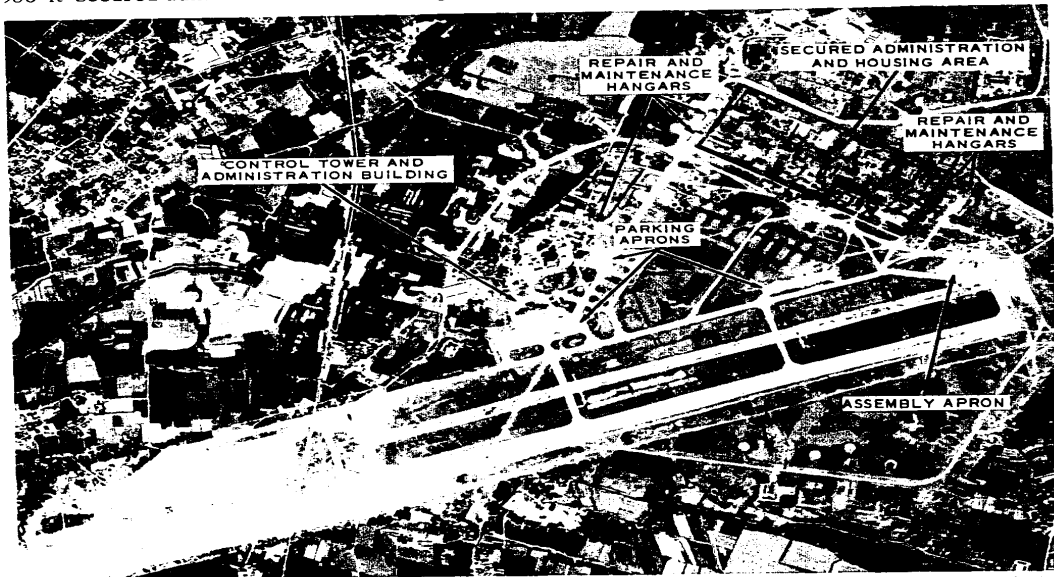


FIGURE 6. KUN-MING AIRFIELD [REDACTED]

NPIC H-4412 (8/63)

25X1D



**YU-SHU AIRFIELD, CHINA**

25X1A

Yu-shu Airfield, 20 nm SE of Yu-shu at 32-53N 096-47E, has an 11,200 x 590 ft, E/W graded area. Snow cover precluded delineation of the runway. Housing and support facilities immediately north of the airfield center include one operations building, one administration building, 4 barracks, 5 storage buildings, 6 other buildings, and one probable POL tank. A secured ammunition dump with six medium-sized storage buildings and one small building was observed .5 nm NE of the support area. A low fence or wall on three sides prob-

ably serves to reduce sand and snow drifting on the airfield.

Photography of [REDACTED] revealed no aircraft.

The airfield is approximately 12,525 ft above mean sea level.

25X1D

REFERENCES

25X1D

MAPS AND DOCUMENTS: AMS Series 1301, Sheet NI 47, 2d ed (U)  
ASSOTW, Vol 31, Feb 59 (SECRET)

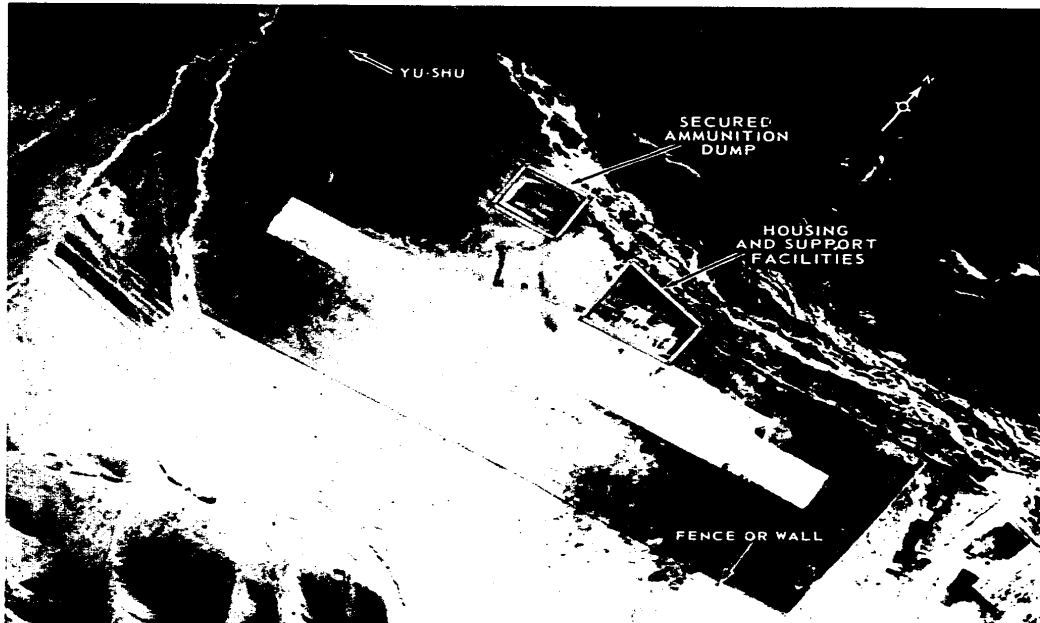


FIGURE 7. YU-SHU AIRFIELD [REDACTED]

25X1D

**TOP SECRET CHESS RUFF**

NO FOREIGN DISSEM

NPIC/R-220/63

**NAGCHHU DZONG AIRFIELD, CHINA**

25X1A

Nagchhu Dzong Airfield, 14 nm WNW of Nagchhu Dzong at 31-33N 091-44E, has a 12,610 x 325' ft, ENE/WSW, graded earth runway. The only facility is a communications site south of the runway containing four buildings surrounded by an earthen parapet holding gun pits. Eleven stick-mast antennas are mounted outside the parapet.

craft but the field appears operational.

The airfield is approximately 15,000 ft above mean sea level.

REFERENCES

25X1D

MAPS AND DOCUMENTS: USATC Series 200, Sheet 0437-2HL, 1st ed (SECRET)  
ASSOTW, Vol 31, Feb 60 (SECRET)

25X1D

Photography on [REDACTED] revealed no air-

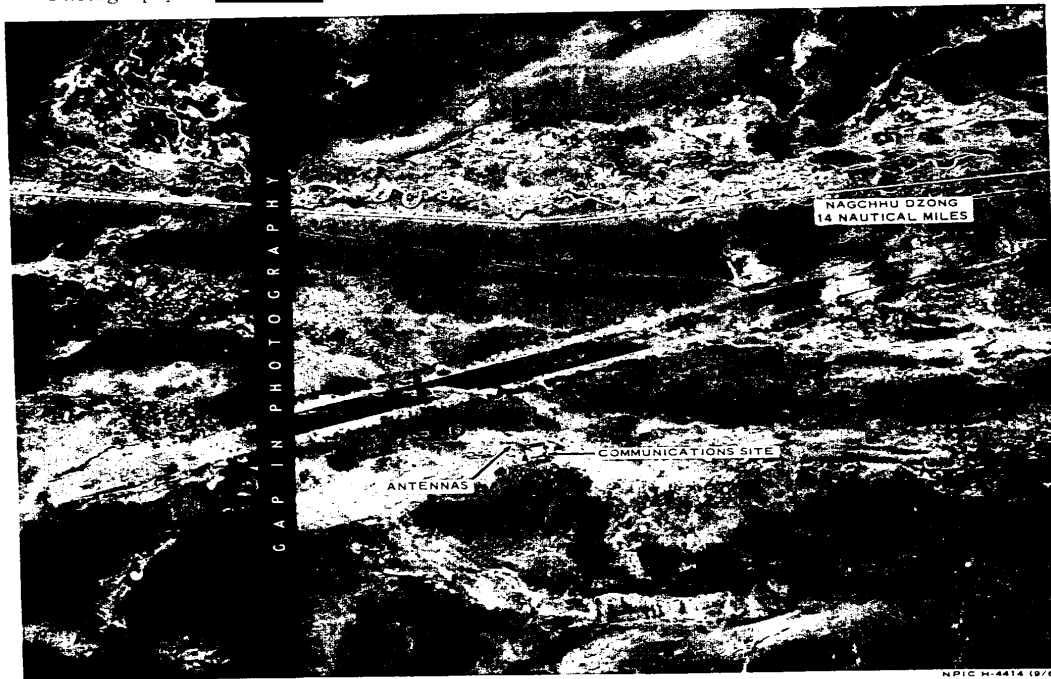


FIGURE 8. NAGCHHU DZONG AIRFIELD [REDACTED]

25X1D

**TOP SECRET CHESS RUFF**

NO FOREIGN DISSEM

NPIC/R-220/63

**KA-ERH-MU AIRFIELD, CHINA**

25X1A

Ka-erh-mu Airfield, 67 nm NNE of Ka-erh-mu at 36-45N 095-35E, has a serviceable, 12,685 x 400 ft, ENE/WSW, probably claybound, crushed rock runway. Facilities include a parking apron at each end of a parallel taxiway connected by seven links to the main runway, an 1,800 ft overrun under construction at the east end of the runway, a 2,000 ft overrun completed at the west end, and an aircraft parking apron immediately south. Housing and support facilities immediately south of the runway center include a combination control tower and administration building, eight probable barracks, and approximately 20 support buildings. Southwest of the runway center, a secured housing area contains 21 barracks-type buildings and six support or administration buildings. Three buildings probably used for

maintenance and refueling stand on a parking apron NE of the main support area with four additional buildings immediately SE of these. Probable navigational aids are approximately 4,500 ft distant from each end of the runway, and two possible GCA radars are between the taxiway and the runway.

Photography on [REDACTED] revealed no aircraft.

The airfield is approximately 9,000 ft above mean sea level.

REFERENCES

25X1D

MAPS AND DOCUMENTS: AMS Series 1301, Sheet NJ 46, 2d ed (U)

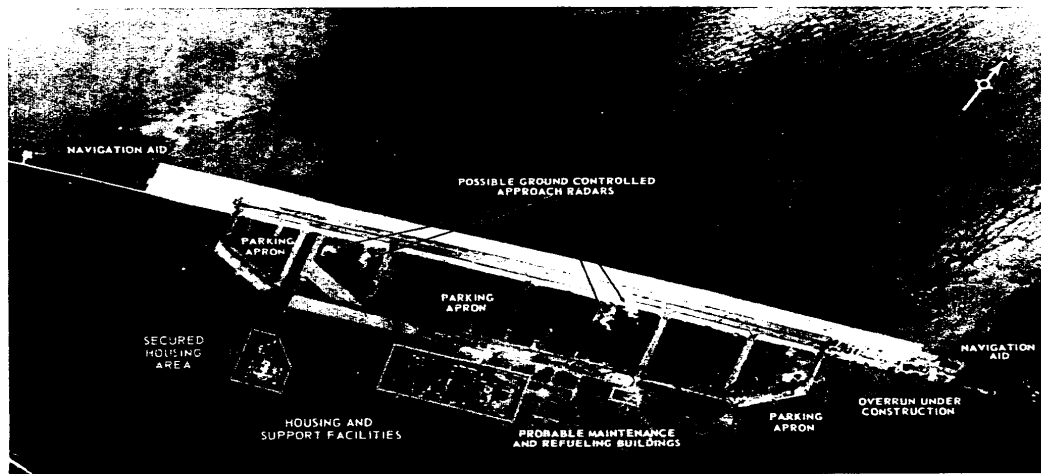


FIGURE 9. KA-ERH-MU AIRFIELD [REDACTED]

NPIC H-4413 (9/63)

25X1D

# TOP SECRET CHESS RUFF

NO FOREIGN DISSEM

NPIC/R-220/63

## HO-TIEN AIRFIELD, CHINA

25X1A

Ho-tien Airfield, 7 nm SSW of Ho-tien at 37-01N 079-52E, has a 5,610 x 250 ft, ESE/WNW, graded earth runway. Facilities are north of the runway and include an aircraft parking area, an operations building with a probable control tower, 16 support buildings, a secured POL storage area, and one secured area of undetermined function.

25X1D

Photography on [REDACTED] revealed two CRATE aircraft in the parking area.

No other airfields have been observed in the Ho-tien area and no military installations in the

vicinity of the airfield; however, Ho-tien contains several possible military storage and barracks areas.

The airfield is approximately 3,600 ft above mean sea level.

25X1D

### REFERENCES

MAPS AND DOCUMENTS: USATC Series 200, Sheet 0335-20A, 1st ed, Oct 60 (SECRET)  
ASSOTW, Vol 31, Dec 58 (SECRET)

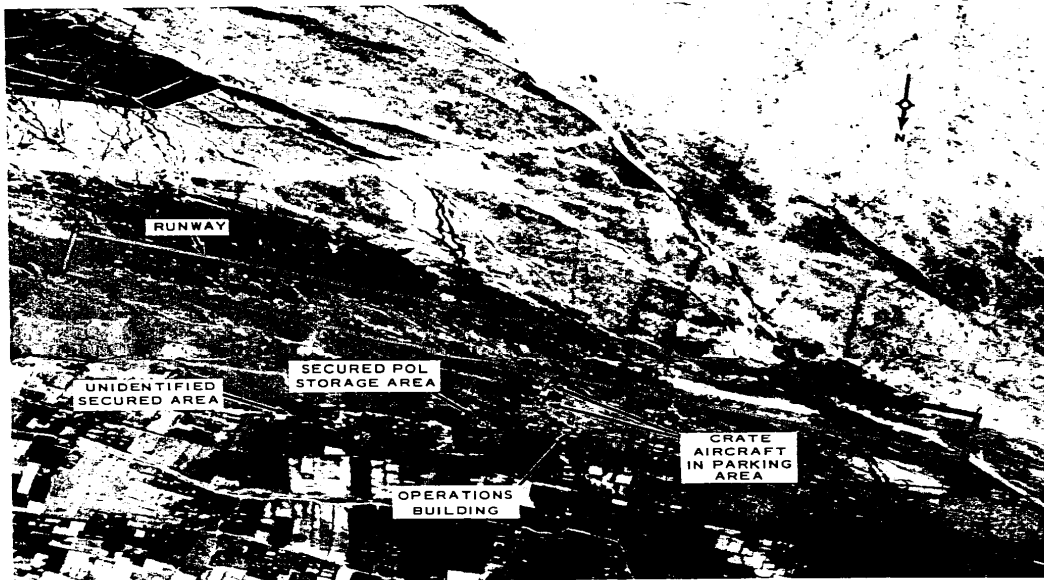


FIGURE 10. HO-TIEN AIRFIELD [REDACTED]

NPIC H-4416 (9/63)

25X1D

**LHASA AIRFIELD, TIBET**

██████████ 25X1A

Lhasa Airfield, 15 nm NE of Khochhe and 50 nm north of Lhasa at 30-30N 091-06E, has two runways. One is a serviceable 9,100 x 175 ft, NE/SW, runway with a probable asphalt surface and a 1,500 x 590 ft crushed rock parking apron at the northeast end. The other is a 12,100 x 110 ft, ENE/WSW, crushed rock runway, apparently serviceable, but probably not in use. The facilities, all SE of the runways, include a taxiway, a parking apron, an operations building with a control tower, two radio stations and 16 support buildings. An adjacent barracks area

contains approximately 40 buildings, a motor pool, and secured, open storage areas.

Photography of ██████████ revealed no aircraft. 25X1D

The airfield is approximately 14,000 ft above mean sea level.

REFERENCES

25X1D

██████████  
MAPS AND DOCUMENTS: USATC Series 200, Sheet 0437-6, 1st ed, Jul 62 (SECRET)  
ASSOTW, Vol 31, Sep 60 (SECRET)

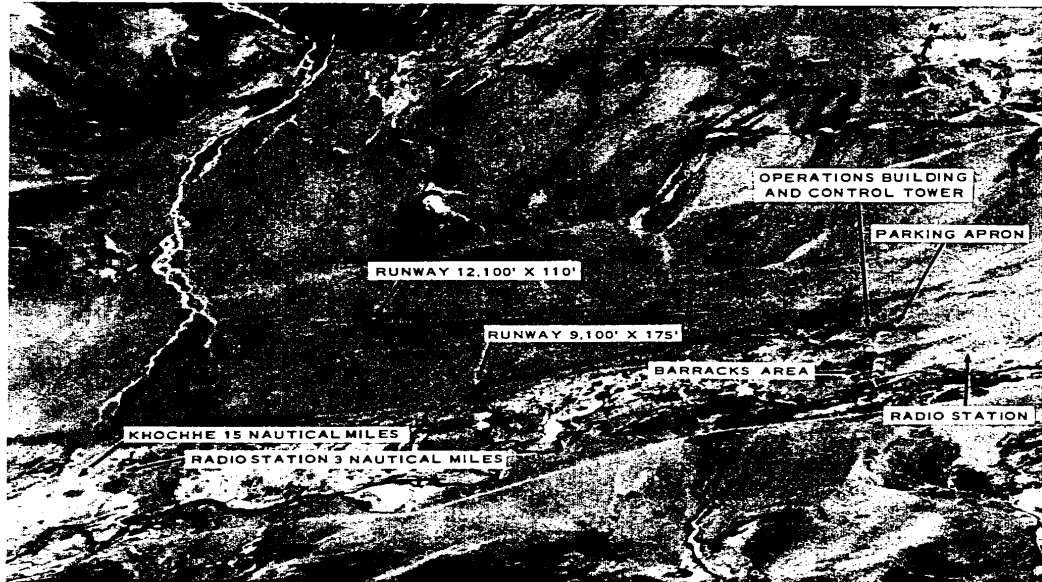


FIGURE 11. LHASA AIRFIELD ██████████

25X1D