

ILLEGIB

Approved For Release 2000/09/06 : CIA-RDP78T05439A000200420029-6

Next 1 Page(s) In Document Exempt

Approved For Release 2000/09/06 : CIA-RDP78T05439A000200420029-6

~~TOP SECRET RUFF~~

Declass Review, NIMA/DoD

NPIC/R-259/63

KAMENETS-PODOLSKIY MRBM LAUNCH COMPLEX, USSR

LAUNCH AREA NO 1 (TYPE II)

25X1A

COORDS: 48-51-15N 26-42-30E
BE NO: [REDACTED]
ASSOC AREA: Launch Area No 2, 11.8 nm to NE
TDI NAME: Kamenets-Podolskiy Launch Site
LOCATION: 11.8 nm NNE of Kamenets-Podolskiy

ADMINISTRATION & HOUSING SECTION: Located 1,200' N of launch site. Contains 11 barracks-type bldgs (125' x 45'), 3 bldgs approximately 135' x 45', and one bldg 170' x 55'.



25X1D



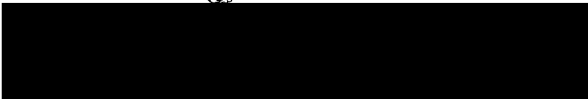
Launch Site

TERRAIN: Level VEGETATION: Wooded
SECURITY: Double fence
PADS: Four elongated pads (210' x 85') with 570' separation and oriented 245°. A structure approximately 40' x 40' is located inboard of each pad.
READY BLDGS: Four drive-in type (190' x 65'). Small structure positioned along S side of each ready bldg.
CONTROL BLDGS: Two 140' x 45'

Rail-to-Road Transfer Point
Probably Negin station, 16.2 nm SW of launch area. Road connections to launch area are by improved and local road network.

Other MRBM Activity Within 25 NM Radius Of Launch Area
Yarmolinsty fixed field-type site is 22 nm to the N.

REFERENCES



25X1D

Site Support Facility

TECHNICAL SECTION: Loop road network 800' NE of launch site

MAPS: AMS, N501-NM 35-11
USATC-200, Sheet 0233-16HL

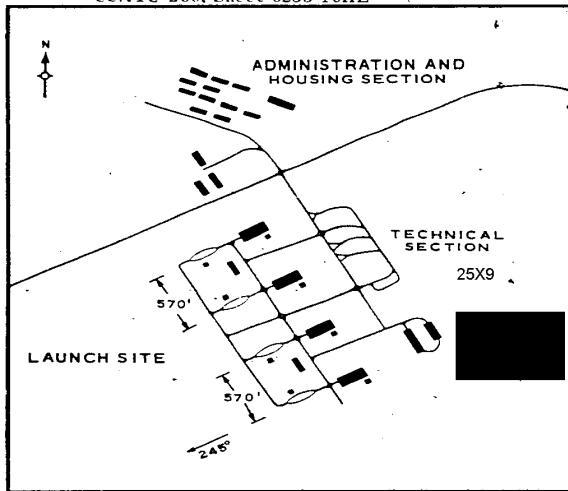
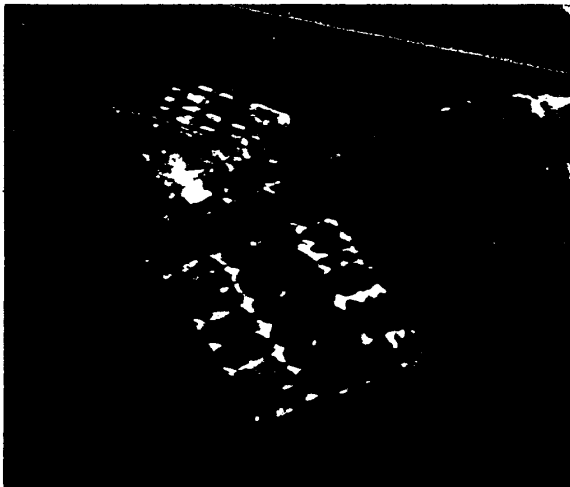


FIGURE 1. KAMENETS-PODOLSKIY MRBM LAUNCH AREA NO 1.

NPIC H-5339 (110/63)

25X1D

~~TOP SECRET RUFF~~

NPIC/R-259/63

LAUNCH AREA NO 2 (TYPE II)

25X1A

COORDS: 48-55-15N 26-59-15E

BE NO: [REDACTED]

ASSOC AREA: Launch Area No 1, 11.8 nm to SW

TDI NAME: Dunayevtsy Launch Site

LOCATION: 21.8 nm NE of Kamenets-Podolskiy

racks-type bldgs (145' x 45'), 3 bldgs 185' x 45', and 6 possible bldgs of undetermined size.



25X9

25X1D



Launch Site

TERRAIN: Level VEGETATION: Wooded
SECURITY: Double fence

PADS: Four elongated pads (190' x 85') with 550' separation and oriented 240°. Structure approximately 40' x 40' located inboard of each pad.
READY BLDGS: Four drive-in type (190' x 55')
CONTROL BLDGS: Two 140' x 45'

Rail-to-Road Transfer Point

Probably Negin station, 4.3 nm SW of launch area. Road connection to launch area is improved road.

Other MRBM Activity Within 25 NM Radius Of Launch Area

The Borshchev MRBM Complex is 24 nm to the W. Yarmolitsy fixed field-type site is 19 nm to the NW.

Site Support Facility

TECHNICAL SECTION: Loop road network 800' NE of launch site

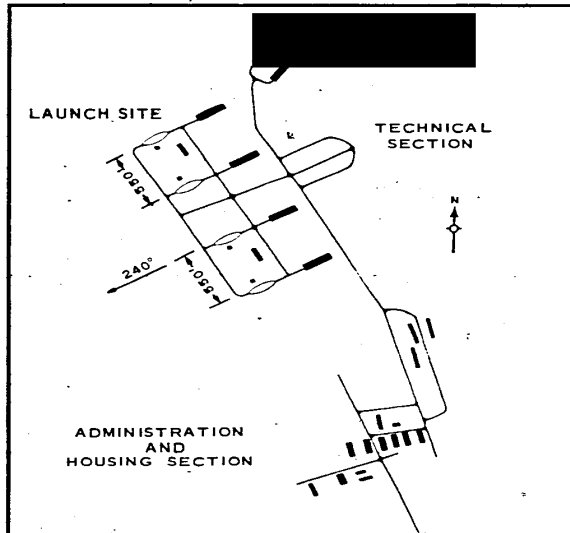
ADMINISTRATION & HOUSING SECTION: Located 2,500' SSE of launch site. Contains 6 bar-

REFERENCES



25X1D

MAPS: AMS, N501-NM 35-11
USATC-200, Sheet 0233-17HL



25X9

FIGURE 2. KAMENETS-PODOLSKIY MRBM LAUNCH AREA NO 2.

25X1D

25X1D

Approved For Release 2000/09/06 : CIA-RDP78T05439A000200420029-6

Approved For Release 2000/09/06 : CIA-RDP78T05439A000200420029-6