

Next 1 Page(s) In Document Exempt

ILLEGIB

~~SECRET~~

DECLASS REVIEW BY NIMA / DoD

CIA/PIB-1011/61

AIRCRAFT PLANT "STALIN" 166
 AIRCRAFT ENGINE PLANT "BARANOVA" 29
 AIRFIELD EAST, OMSK, USSR

The Omsk Aircraft Plant "Stalin" 166, Omsk Aircraft Engine Plant "Baranova" 29, and Omsk Airfield East are three associated and adjoining installations located in the southeastern outskirts of Omsk, USSR (54-58N 73-27E).

Aircraft Plant "Stalin" 166 (Figure 1) is a major producer of medium jet aircraft. It occupies an area approximately 3,000 by 2,000 feet and has a roof cover of approximately 1.5 million square feet. The plant is rail served and surrounded by a high wall with guard towers.

Aircraft Engine Plant "Baranova" 29 (Figure 1) is a major producer of both jet and reciprocating aircraft engines. It occupies an area approximately 4,000 by 2,200 feet, has a roof cover of approximately 2 million square feet, and contains 3 jet-engine test cells and 14 reciprocating-engine test cells. The plant is rail served and surrounded by a high wall with guard towers.

25X1D

Omsk Airfield East (Figure 2) is the test and flyaway field for the aircraft produced by the adjacent plants. At the time of the photography [REDACTED] four aircraft were on the airfield, two CAMEL, one CAB, and one CRATE. The concrete runway measures 7,100 by 230 feet. Located at the airfield is a final assembly hangar, 410 by 165 feet and 50 feet high. A new final assembly hangar 1,240 by 210 by 80 feet high, was in final stages of construction. A new runway, 8,600 by 280 feet, was under construction approximately 4 miles east of the old runway. A new taxiway, 3 miles long, leads from the new final assembly hangar to the new runway.

The major components of the aircraft plant, the aircraft engine plant, and the airfield are identified on the accompanying drawing and photograph (Figures 1 and 2) and described in the following keys to annotations.

- 1 -

~~SECRET~~

5011053

Table 1. Key to Annotations, Aircraft Engine Plant "Baranova" 29, and Aircraft Plant "Stalin" 166.
(Figure 1)

Item	Description	Dimensions (ft)
1	2 storage buildings one building L-shaped building wing	90 x 55 105 x 40 40 x 30
2	Pattern shop	475 x 130
3	Steam plant	115 x 50
4	Coal storage	
5	7 storage buildings 4 buildings one building one building one building	120 x 30 120 x 75 80 x 30 65 x 30
6	Sawmill	55 x 40
7	Rail-served, fenced possible POL storage	330 x 185
8	Storage building	145 x 65
9	Storage building	400 x 100
10	5 assembly and machine shops (2 with longitudinal monitor roofs)	400 x 150(ea)
11	5 storage buildings 3 buildings one building one building	50 x 25 115 x 25 160 x 25
12	2 storage buildings one building one L-shaped building wing	195 x 65 105 x 40 40 x 30
13	Steam plant shed	115 x 50 80 x 25
14	17 engine test cells 3 jet-engine test cells 14 U-shaped reciprocating-engine test cells	120 x 25 80 x 20 (2) 65 x 15 (12)
15	Saw-tooth roof Assembly building	595 x 400
16	Two storage buildings one building one building	115 x 40 100 x 50
17	Shop	115 x 65

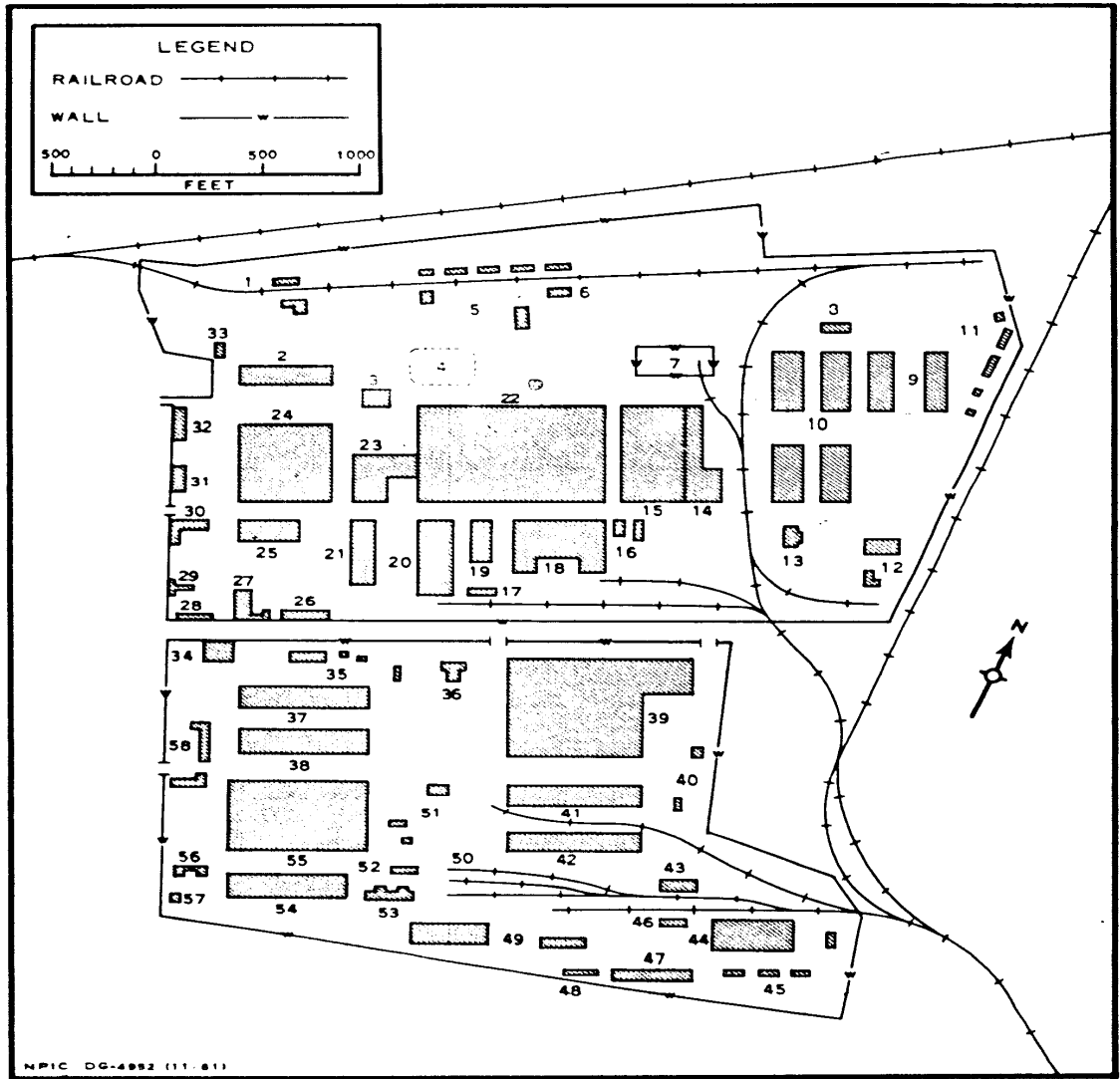


FIGURE 1. AIRCRAFT ENGINE PLANT "BARANOVA" 29 AND AIRCRAFT PLANT "STALIN" 166, OMSK, USSR.

Table 1. (Continued)

Item	Description	Dimensions (ft)
15	Monitor-roof forge or foundry 2 wings one wing one wing	100 x 80 100 x 100
19	Monitor-roof forge or foundry	215 x 100
20	Monitor-roof forge or foundry	460 x 180
21	Monitor-roof forge or foundry	420 x 115
22	Saw-tooth roof machine shop	925 x 525
23	Monitor-roof shop wing (connected to item 22)	250 x 140 175 x 70
24	Saw-tooth roof machine shop	450 x 480
25	Monitor-roof shop	300 x 130
26	Storage building	250 x 40
27	L-shaped repair and maintenance shop wing	200 x 80 80 x 40 40 x 40
28	Storage building	160 x 40
29	T-shaped engineering shop or laboratory	100 x 50 100 x 30
30	L-shaped administration	210 x 55 75 x 55
31	Two- or three-story main administration building	170 x 55
32	Garage	160 x 50
33	Administration	115 x 50
34	2- or 3-story administration or laboratory building structure on roof	220 x 180 70 x 50
35	4 storage buildings one building one building one building one building	180 x 65 100 x 30 65 x 25 55 x 40
36	T-shaped building utility	130 x 40 70 x 55
37	Production shop	675 x 140
38	Production shop, roof undergoing repairs	675 x 165

Table 1. (Continued)

Item	Description	Dimensions (ft)
39	Subassembly building wing	660 x 630 265 x 200
40	2 storage buildings one building one building	65 x 50 65 x 15
41	Monitor-roof production shop	660 x 130
42	Monitor-roof production shop	660 x 130
43	Storage building	200 x 65
44	Monitor-roof forge or foundry	350 x 65
45	4 storage buildings 3 buildings one building	105 x 40 90 x 40
46	Storage building	145 x 40
47	Monitor-roof production shop	350 x 65
48	Storage building	160 x 40
49	2 monitor-roof production shops one shop one shop	410 x 150 230 x 65
50	Coal storage	
51	3 administration or laboratory buildings one building one building one building	115 x 65 80 x 45 55 x 30
52	Storage building	115 x 40
53	Steam plant	230 x 65
54	Production shop	610 x 150
55	Monitor-roof subassembly building	710 x 460
56	Irregular U-shaped administration building center wings	65 x 25 50 x 65 65 x 50
57	Administration building	75 x 40
58	2 administration buildings, both L-shaped one building with wing one building with wing	130 x 35 35 x 20 230 x 35 35 x 35

Table 2. Key to Annotations, Omsk Airfield East.

Item	Description	Dimensions (ft)	Remarks
1	Personnel buildings 6 buildings 5 buildings 1 T-shape wing	200 x 50 90 x 30 90 x 30 55 x 30	Several other barracks-type and administration buildings are under construction in this area.
2	NE SW concrete-surface runway	7,100 x 230	
3	Final assembly hangar	1,240 x 210 70 high to eaves 50 high including monitors	Hangar appears to be in final stages of construction. A rail spur is under construction linking this hangar to the adjacent airframe and aircraft engine plants.
4	Taxiway u c to new runway	16,000 x 70	
5	Rail-served batch plant and construction equipment storage		
6	POL storage with 7 tanks 2 tanks 5 horizontal	35 dia 35 long	
7	Monitor-roof final assembly hangar	410 x 165 x 50 to eaves	Hangar is operational and has rail connections to the adjacent airframe and aircraft engine plants.
8	Maintenance hangar	215 x 165 x 50	
9	Probable military supply depot and vehicle storage area	6,500 x 3,000	Area is completely surrounded by a 65' wide plowed strip with fence and guard towers. Within this compound is another secured area, 2,200 x 2,000 completely surrounded by an 50' wide plowed strip, double fence, and guard towers. This area is rail served and contains approximately 30 storage-type buildings, the eight largest of which measure 130 x 60.
10	Storage area	2,000 x 1,700	Area is completely surrounded by a 175' wide cleared strip, a double fence, and guard towers. Within the secure area are four single-story buildings, each 150 x 65. These four buildings are arranged in a pattern which provides a distance of 625' between buildings. This isolated arrangement of buildings suggests the possibility of some type of military storage.
11	New NE SW runway u c	5,600 x 280	A section, 3,600 x 280, appears completed with concrete surface. Grading and surfacing operations on the remaining 5,000' are currently in progress. Runway extension capabilities are unlimited.
12	Probable construction camp		Area contains several storage-type buildings probably housing construction personnel, equipment, and materiel.

SECRET

25X1C



FIGURE 2. OMSK AIRFIELD EAST, O

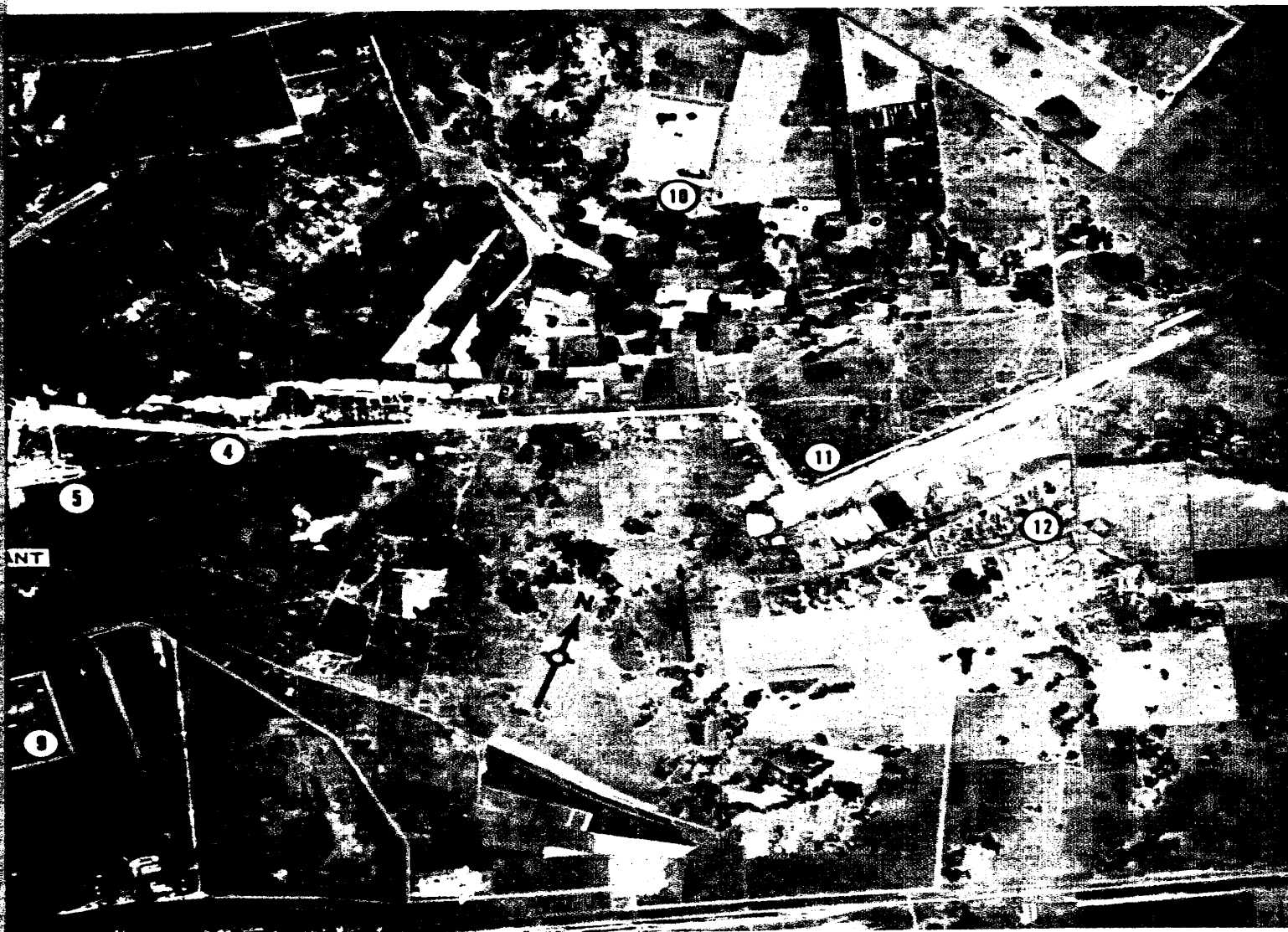


FIGURE 2. OMSK AIRFIELD EAST, OMSK, USSR.

25X1C

25X1D