

ILLEGIB

Approved For Release 2001/03/30 : CIA-RDP78T05439A000300270096-8

Approved For Release 2001/03/30 : CIA-RDP78T05439A000300270096-8

~~TOP SECRET RUFF~~

TCS - 1634/64-KH  
IB - 162/64  
31 March 1964  
Copy # 1

MEMORANDUM FOR: Chief, Manufacturing and Services Division, ORR

25X1A

ATTENTION : [REDACTED]  
THROUGH : Chief, Requirements Branch, Reconnaissance Group, CGS  
FROM : Chief, CIA/PID (NPIC)  
SUBJECT : Status of the Rail Line between Chung-King and Kuei-Yang, China  
REFERENCES : (1) Requirement No. C-RR4-81,027  
(2) Project No. C-263/64

1. This memorandum is a response to the above referenced requirement which requests that a study be made of the rail line between Chung-King (29 34N/106 34E) and Kuei-Yang (26 35N/106 43E). To be noted in this study are recent improvements and expansion, state of construction, track gauges, alignment, and evidence of expansion at yards and stations along the rail lines. Much of the desired information is shown on the annotated map (CIA/PID/IB-P-513/64), which is attached to this memorandum.

2. The Cheng-Tu/Chung-King Rail Line, a standard-gauge, single-track line extends southward from Chung-King (29 34N/106 34E). It parallels the west bank of the Yangtze River. A standard-gauge branch line leaves the main line at a point where a large railroad bridge has been constructed over the Yangtze (29 21N/106 25). This branch line lies in an oval configuration in making its approach to this bridge. The bridge was determined to be operational [REDACTED]

25X1B

25X1B [REDACTED]

The alignment continues southward where it joins the Ch'i Chiang (river) Valley. It follows the river valley for approximately 50 nautical miles, at which point (28 41N/106 48E) the line becomes inoperable. The line is under construction from this point southward. The construction is in a primary stage for 125 nautical miles, with this section ending 55 nautical miles south of Tsun-I (27 41N/106 55E). All bridges are incomplete with only the piers and abutments present. The grading is in its initial stages. [REDACTED]

25X1B

25X1B [REDACTED]

S-12239

~~TOP SECRET RUFF~~

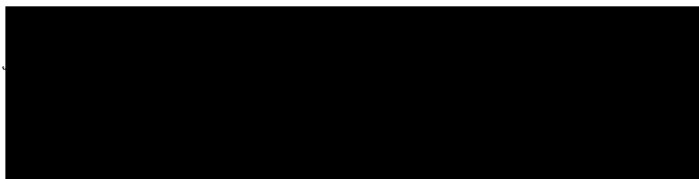
GROUP 1  
Excluded from automatic  
downgrading and  
declassification

TOP SECRET RUFF

Fifty-five nautical miles south of Tsun-I construction is in an advanced stage. This section extends southward for approximately 20 nautical miles, where it connects with an operational line extending north from Kuei-Yang. The grading is nearing completion with a turning wye under construction at the north end of this section. A yard was observed under construction (26 51N/106 42E), an under pass at 26 49N/106 42E, and two bridges at 26 43N/106 43E. South of this section the line is operational into Kuei-Yang (26 35N/106 43E).

3. The photography from which this data was compiled is as follows:

v  
25X1D

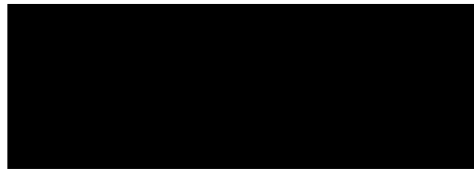


25X1A

25X1A

4. The photo analysts on this requirement were [redacted] who may be contacted on extension 2547, should you have further questions concerning this project. This memorandum and annotated map completes this requirement.

25X1A



Enclosures:

1 Annotated Map (2 copies)  
(CIA/PID/IB-P-513/64)

TOP SECRET RUFF

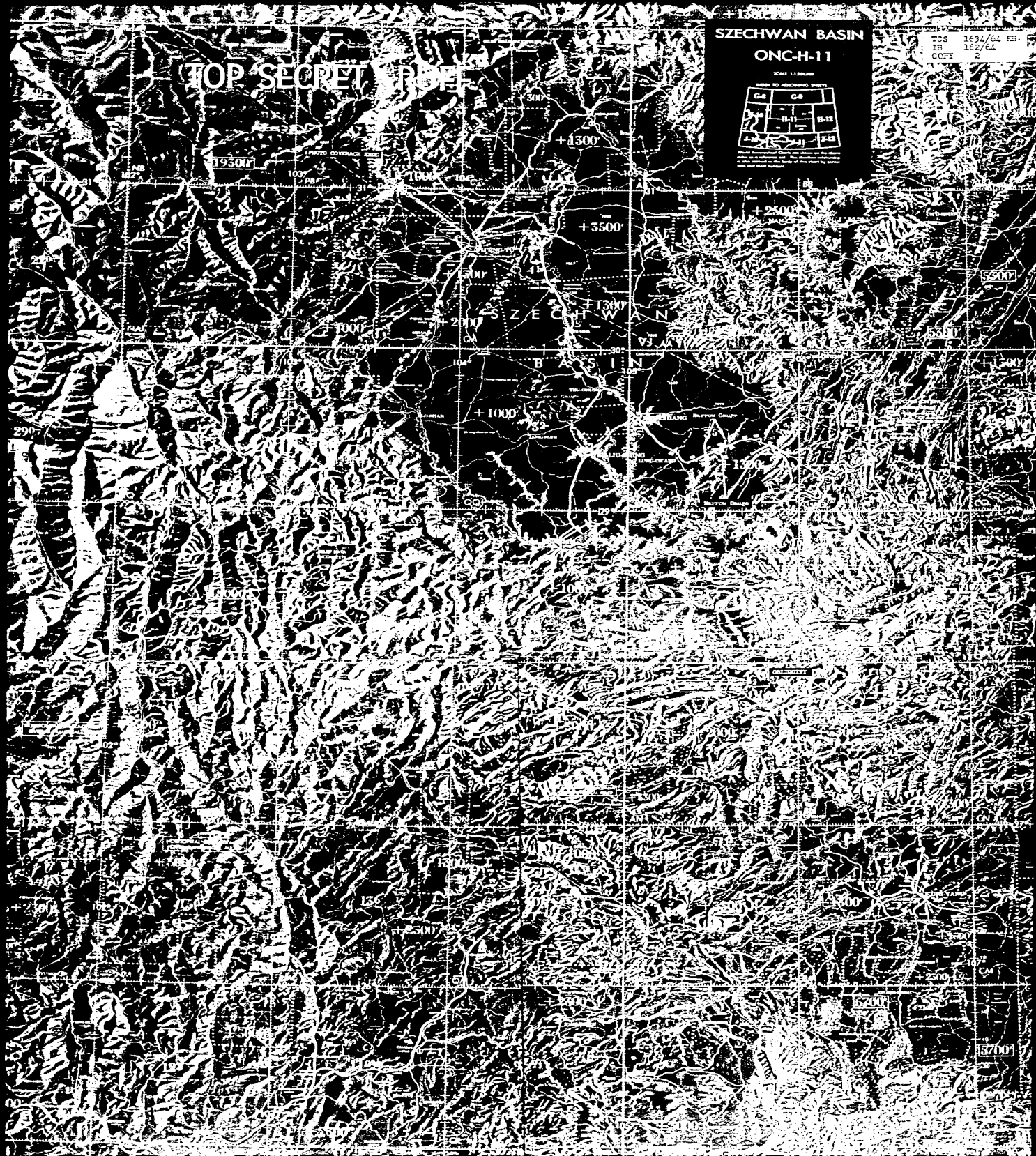
TOP SECRET ROSE

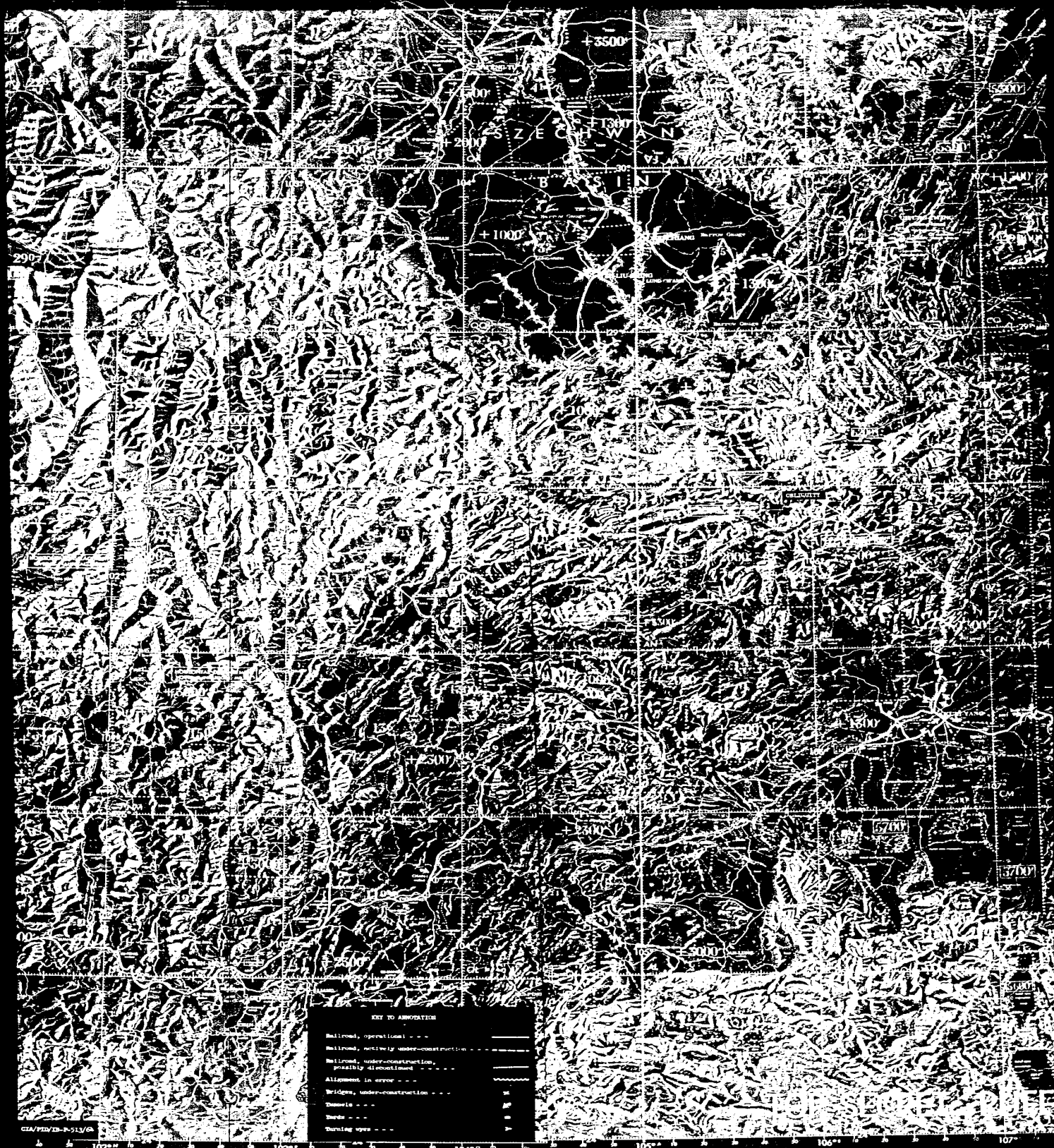
SZECHWAN BASIN

ONC-H-11



TOS 163/62 EH  
IR 162/62  
COPY 2





KEY TO ABBREVIATIONS

Railroad, operational	----
Railroad, actively under construction	----
Railroad, under construction, possibly discontinued	----
Alignment in error	----
Widened, under construction	----
Canals	----
Dams	----
During open	----

CGA/P22/22-P-513/G

102° 103° 104° 105° 106° 107°

UH VH