

ILLEGIB

Approved For Release 2000/05/11 : CIA-RDP78T05439A000300330066-4

Approved For Release 2000/05/11 : CIA-RDP78T05439A000300330066-4

25X1C

NATIONAL PHOTOGRAPHIC
INTERPRETATION CENTER

~~SECRET~~

25X1D

VN 18/008/B

WH693851

DATE OF INFORMATION

INSTALLATION NUMBER

UTM COORDINATE

NAME: BA LAM ARMY SUPPLY DEPOT SW

25X1A

LOCATION: ONE NM SSW OF BA LAM, HA DONG PROVINCE, AT 20-40N 105-39E,
MILITARY REGION RIGHT BANK

DESCRIPTION: ACTIVE INSTALLATION CONTAINS 14 BARRACKS (TOTAL FLOOR SPACE
97,300 SQ FT), 12 STORAGE-TYPE BUILDINGS (51,000 SQ FT), ONE AMMUNITION
STORAGE BUILDING (700 SQ FT), ONE ADMINISTRATION BUILDING, 3 MESSHALLS,
AND APPROXIMATELY 35 MISCELLANEOUS BUILDINGS AND SHEDS.

TRAINING FACILITIES: ATHLETIC FIELD AND 2 UNOCCUPIED 6-GUN AAA SITES

EQUIPMENT: NONE

Declass Review, NIMA/DoD

TROOP CAPACITY: 2,430

MAP REFERENCE: AMS L509, SHEET NF48-15, SCALE: 1:250,000, ED 2 AMS AND
AMS L605, SHEET 60E, SCALE: 1:100,000, ED 5 AMS

25X1D

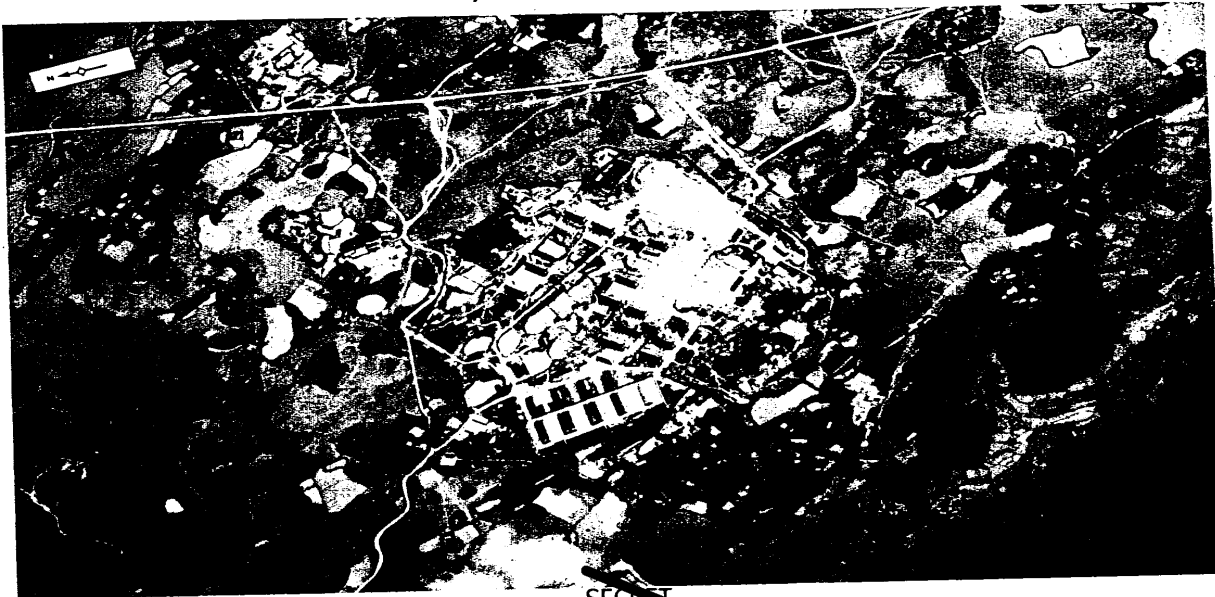
VN 18/008/B

WH693851

DATE OF PHOTOGRAPHY

INSTALLATION NUMBER

UTM COORDINATE



~~SECRET~~

25X1C

8 10 1971