

ILLEGIB

Approved For Release 2000/05/11 : CIA-RDP78T05439A000300330130-2

Approved For Release 2000/05/11 : CIA-RDP78T05439A000300330130-2

NATIONAL PHOTOGRAPHIC  
INTERPRETATION CENTER

25X1C

~~SECRET~~

25X1D

VN 8/001A/B  
INSTALLATION NUMBER

UJ875585  
UTM COORDINATE

DATE OF INFORMATION 25X1A

25X1A

NAME: SON LA ARMY BARRACKS AND HEADQUARTERS MILITARY REGION NW

LOCATION: AT SON LA, SON LA PROVINCE, AT 21-19N 103-55E, MILITARY REGION  
NORTHWEST

DESCRIPTION: ACTIVE MILITARY COMPLEX CONTAINS 112 BARRACKS (TOTAL FLOOR SPACE  
334,000 SQ FT), 79 STORAGE BUILDINGS (331,800 SQ FT), 27 ADMINISTRATION  
BUILDINGS, 8 REVETTED PROBABLE EXPLOSIVES STORAGE BUILDINGS (24,600 SQ FT),  
10 MESS HALLS, ONE WEATHER STATION, ONE AMPHITHEATER, 350 MISCELLANEOUS  
BUILDINGS, 6 BUILDINGS UNDER CONSTRUCTION, AND AN OCCUPIED 4-GUN AAA SITE.  
LOCATED APPROXIMATELY 5 NM NNE AT UTM UJ900670 ARE 2 SECURED STORAGE  
AREAS CONTAINING 18,000 SQ FT OF COVERED STORAGE.

TRAINING FACILITIES: PARADE GROUND/ATHLETIC FIELD

### Declass Review, NIMA/DoD

EQUIPMENT: 13 TRUCKS, 4 UNIDENTIFIED VEHICLES, 4 LIGHT AAA GUNS, AND 8  
UNIDENTIFIED PIECES OF EQUIPMENT.

TROOP CAPACITY: 9,420

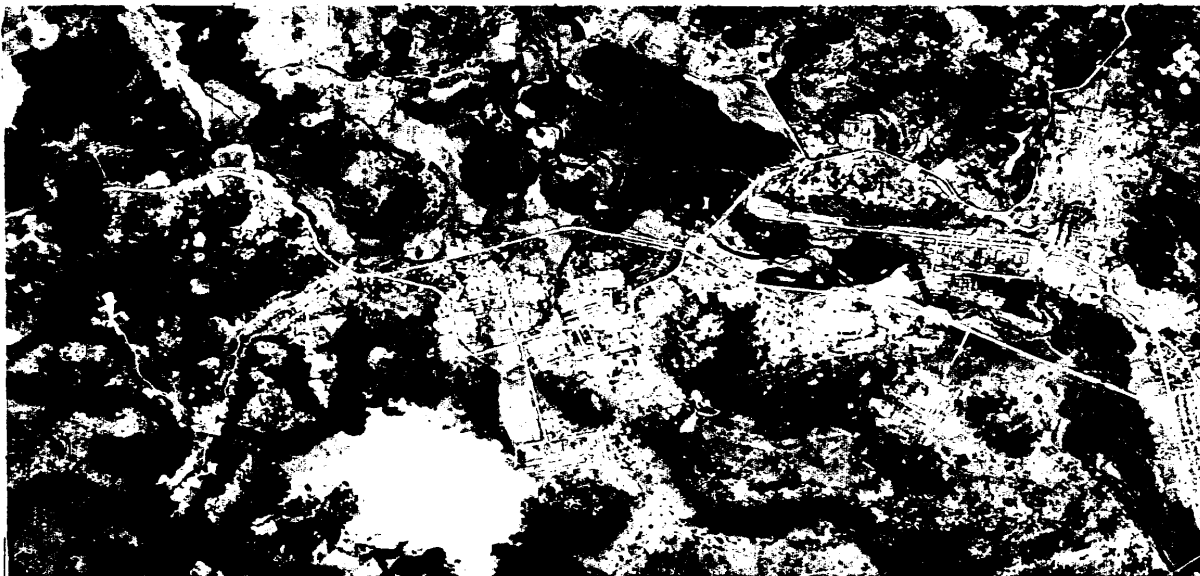
MAP REFERENCE: AMS L509, SHEET NF48-10, SCALE: 1:250,000, ED 1 AMS

25X1D

VN 8/001A/B  
INSTALLATION NUMBER

UJ875585  
UTM COORDINATE

DATE OF PHOTOGRAPHY



25X1C

~~SECRET~~

S-1577