

ILLEGIB

Approved For Release 2000/05/11 : CIA-RDP78T05439A000300330152-8

Approved For Release 2000/05/11 : CIA-RDP78T05439A000300330152-8

NATIONAL PHOTOGRAPHIC
INTERPRETATION CENTER

25X1C

~~SECRET~~

25X1D

NPIC/R-1354/64

VN 16/003/B
INSTALLATION NUMBER

XJ568373
UTM COORDINATE 25X1A

DATE OF INFORMATION

NAME: DONG TRIEU AREA ARMY SUPPLY DEPOT NW

LOCATION: 3.2 NM NNW OF DONG TRIEU, HAI DUONG PROVINCE, AT 21-07N 106-30E,
MILITARY REGION LEFT BANK

DESCRIPTION: ACTIVE MILITARY INSTALLATION CONSISTS OF 2 AREAS CONTAINING
A TOTAL OF 38 BARRACKS (TOTAL FLOOR SPACE 112,700 SQ FT), 3 STORAGE
BUILDINGS (3,100 SQ FT), 9 ADMINISTRATION BUILDINGS, 2 MESS HALLS, AND
APPROXIMATELY 10 MISCELLANEOUS BUILDINGS AND SHEDS.

TRAINING FACILITIES: NUMEROUS TRENCHES AND WEAPONS POSITIONS

Declass Review, NIMA/DoD

EQUIPMENT: NONE

TROOP CAPACITY: 2,820

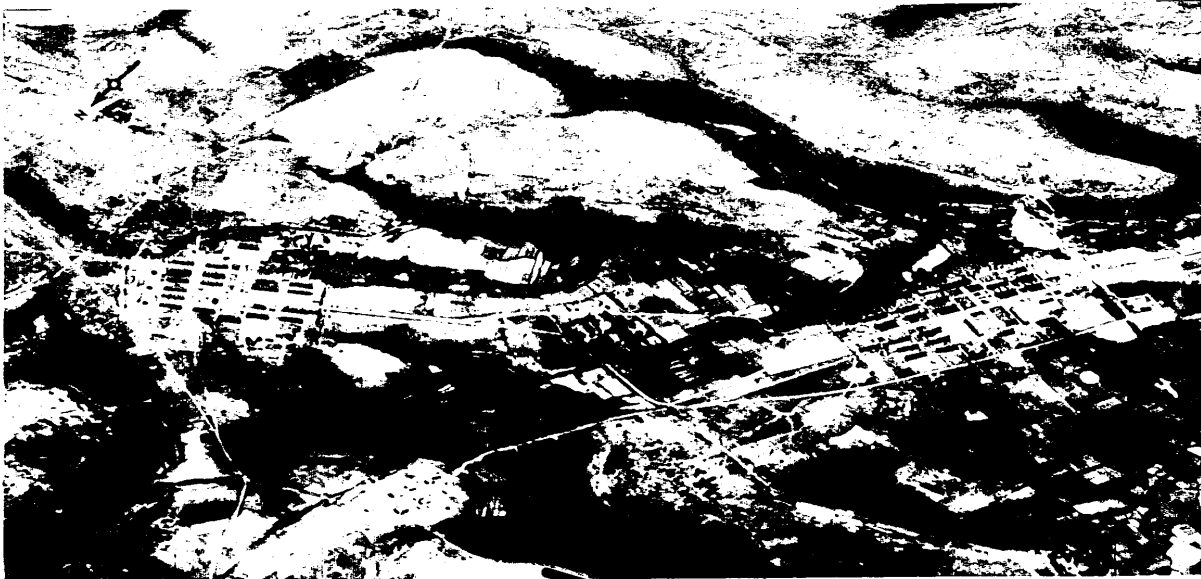
MAP REFERENCE: AMS L509, SHEET NF48-12, SCALE: 1:250,000, ED 2 AMS

25X1D

VN 16/003/B
INSTALLATION NUMBER

XJ568373
UTM COORDINATE

DATE OF PHOTOGRAPHY



25X1C

~~SECRET~~

8-12917