

ILLEGIB

Approved For Release 2001/03/22 : CIA-RDP78T05439A000300340071-7

Approved For Release 2001/03/22 : CIA-RDP78T05439A000300340071-7

~~TOP SECRET~~

S-12891

Copy 5  
Pages

Declassification Review by NIMA/DOD

NPIC/R-431/64

June 1964

PHOTOGRAPHIC INTERPRETATION REPORT

OVRUCH HEADQUARTERS 23D TANK DIVISION  
OVRUCH, USSR  
CARPATHIAN MD



CIA



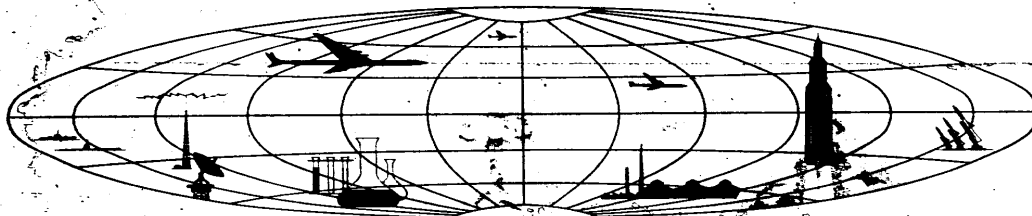
DIA

Handle Via TALENT-KEYHOLE Control Only

WARNING

This document contains classified information affecting the national security of the United States within the meaning of the espionage laws U. S. Code Title 18, sections 793 and 794. The law prohibits its transmission or the revelation of its contents in any manner to an unauthorized person, as well as its use in any manner prejudicial to the safety or interest of the United States or for the benefit of any foreign government to the detriment of the United States. It is to be seen only by personnel especially indoctrinated and authorized to receive TALENT-KEYHOLE information. Its security must be maintained in accordance with KEYHOLE and TALENT regulations.

NATIONAL PHOTOGRAPHIC INTERPRETATION CENTER



~~TOP SECRET~~

GROUP 1  
Excluded from automatic  
downgrading and declassification

TOP SECRET RUFF

NPIC/R-431/64

#### PREFACE

This report is one in a series on Soviet Ground Force and Logistic installations being prepared for a DIA/CIA Panel. The series is being coordinated, published and disseminated by NPIC. The photographic analysis is being performed by the NPIC Photographic Analysis Group, the CIA Photographic Intelligence Division (NPIC), and the Production Center 1P1c (DIA). The photographic analysis for this particular report was performed by the Production Center 1P1c.

In the interest of uniformity, the titles and letter designators for the facilities observed at these installations are identical with those appearing in the project requirement. When a specific facility is not observed both its title and letter designator are omitted in the report.

Titles and letter designators for the various facilities are as follows: (A) railroad service, (B) road service, (C) landing strips, (D) administrative and troop housing areas, (E) storage areas, (F) ammunition storage areas, (G) POL storage areas, (H) other buildings and facilities, (J) equipment storage/maintenance areas, (K) athletic fields, (L) small arms firing ranges, (M) driver training areas, (N) tank/assault gun firing ranges, (P) flat trajectory firing ranges, (Q) artillery emplacements (batteries), (R) infantry or combined arms field training areas or courses, (S) special training facilities, (T) unidentified facilities or tracking activity.

- 1 -

TOP SECRET RUFF

TOP SECRET RUFF

NPIC R-431 64

OVRUCH HEADQUARTERS 23D TANK DIVISION  
(51-19N 028-48E)  
OVRUCH, ZHITOMIRSKAYA OBLAST, USSR  
CARPATHIAN MD

25X1A

25X1C

AL. No: 1

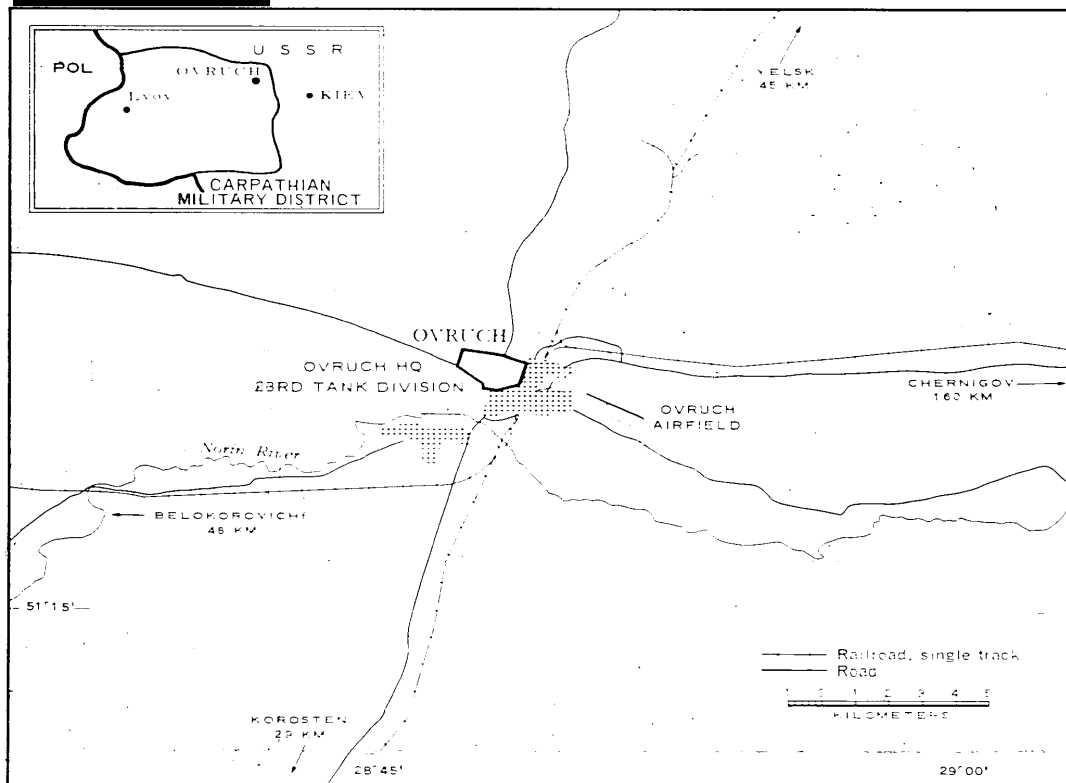


FIGURE 1. LOCATION OVRUCH HEADQUARTERS 23D TANK DIVISION.

- 2 -

TOP SECRET RUFF

TOP SECRET RUFF

NPIC R-431 64

#### SUMMARY

Ovruch Headquarters 23d Tank Division occupies the northwestern part of the town of Ovruch, 40 kilometers (km) north of Korosten and 56 km south of Yelsk. The installation covers approximately 650 acres, is capable of housing about 9,700 troops (based on 26 multistory barracks), is rail and road served, and is located 1.3 km west of Ovruch airfield.

The installation contains 182 buildings as follows: 15 multistory administrative buildings,

26 multistory barracks, 47 general storage buildings, 11 vehicle storage buildings, and 83 support buildings.

A large number of smaller dwellings in four housing areas, two probable and one possible tank gun calibration ranges, two possible vehicle parks, eight small arms ranges, an athletic field, and a possible driver training area for wheeled vehicles are also within the installation.

#### DESCRIPTION OF INSTALLATION

##### Railroad Service

The Yelsk-Korosten rail line passes the installation approximately 640 meters to the east. Sidings and a reversing triangle are in this area.

##### Road Service

The main north-south all-weather Yelsk-Korosten road passes through the installation.

##### Aircraft Landing Strips

Ovruch Airfield [REDACTED] is located 1.3 km east of the installation.

##### Administrative and Troop Housing Areas

Area D1 contains seven multistory barracks, three multistory administrative buildings, and one support building.

Area D2 contains six multistory administrative buildings and three support buildings.

Area D3 contains 10 multistory barracks, three multistory administrative buildings, and eight support buildings. The area also includes an athletic field.

Area D4 contains nine multistory barracks and two support buildings. Housing is also located in the eastern portion of the barracks area.

##### General Storage Areas

Area E1 contains two probable multistory administrative buildings, 19 storage buildings, and 19 support buildings, including one guard tower. Probable housing is located east of the area.

Area E2 contains 13 storage and 15 support buildings. Housing is located east of the area.

Area E3 contains six storage buildings with housing adjacent to the area.

Area E4 contains one probable multistory administrative building, nine storage buildings, and five support buildings.

##### Equipment Storage/Maintenance Areas

Area J1 contains seven probable vehicle storage buildings, three 175 by 65 feet and four 140 by 55 feet. Eleven support buildings ranging from 160 by 30 to 40 by 20 feet, as well as two probable tank gun calibration ranges 880 by 50 feet and 480 by 110 feet, are also located in the area.

Area J2 contains two probable 110- by 30-foot vehicle storage buildings, one possible 300- by 30-foot maintenance building, three support

25X1A

TOP SECRET RUFF

TOP SECRET RUFF

NPIC R-431 64

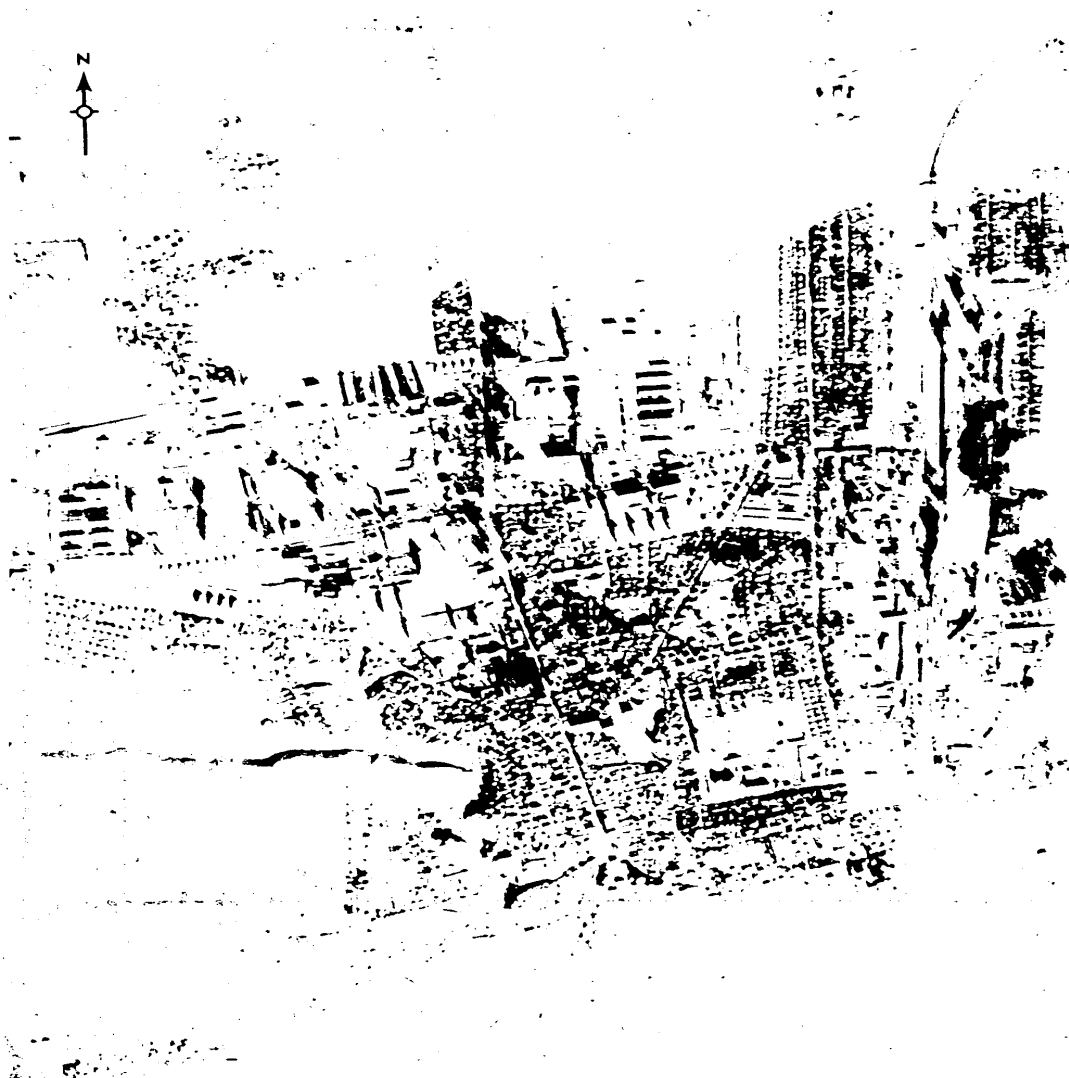


FIGURE 2. OVRUCH HEADQUARTERS 23D TANK DIVISION

NPIC J-3042 10/84

- 4 -

25X1D

TOP SECRET RUFF

TOP SECRET RUFF

NPIC R-431 64

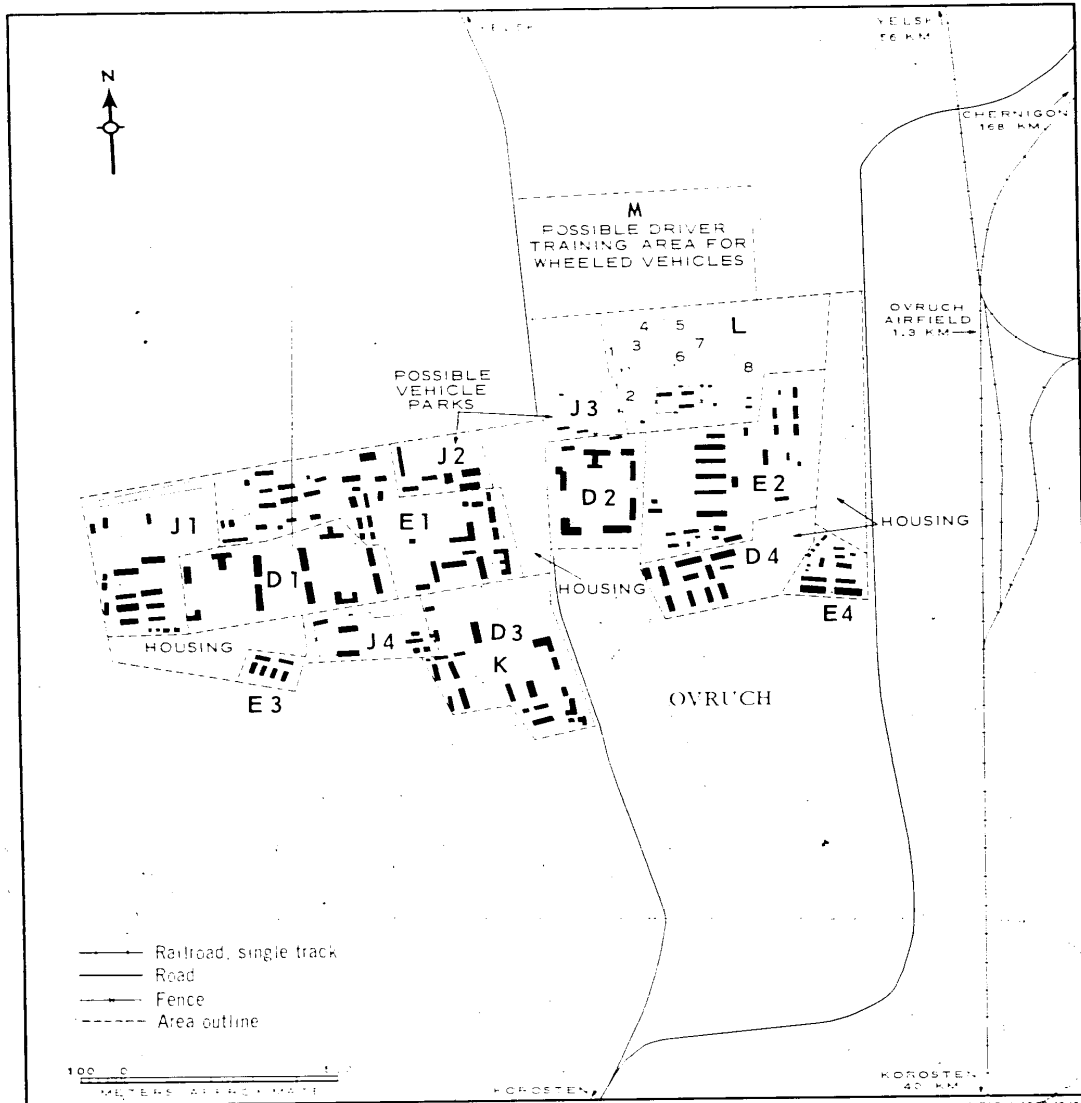


FIGURE 3. OVRUCH HEADQUARTERS 23D TANK DIVISION. Sketch compiled from [REDACTED]

25X1D

- 5 -

TOP SECRET RUFF

## TOP SECRET RUFF

NPIC/E-431/64

buildings ranging from 80 by 30 feet to 60 by 30 feet, and a possible 550- by 270-foot vehicle park.

Area J3 contains a possible 540- by 410-foot, apparently fenced vehicle park and two 80- by 30-foot buildings.

Area J4 contains two 140- by 50-foot vehicle storage buildings, five support buildings ranging from 110 by 30 feet to 40 by 20 feet, and one possible 320- by 80-foot tank calibration range.

### Athletic Field

Area K is a 470- by 320-foot athletic field

which may also be used as a drill field.

### Small Arms Firing Ranges

Eight small arms firing ranges are located at the installation (Area L). Dimensions are as follows: (1) 280 by 50 feet, (2) 160 by 60 feet, (3) 350 by 60 feet, (4) 620 by 50 feet, (5) 650 by 50 feet, (6) 180 by 80 feet, (7) 280 by 50 feet, and (8) 320 by 50 feet.

Nine support buildings are located in the area.

### Driver-Training Areas

Area M is a possible 1,750- by 950-foot wheeled-vehicle driver training area.

## REFERENCES

### PHOTOGRAPHY

25X1D

### MAPS OR CHARTS

US Air Target Chart, Sheet 0200-0HL, Series 200, 3d ed, Jan 62 (SECRET)

### DOCUMENTS

Army, DA PIB TK-10-00, *Military Installation, Camp Polina, MD, U.S.S.R.*, 21 Feb 63 (TOP SECRET RUFF)

### REQUIREMENT

DIAPP-1-15-64 (partial answer)

### NPIC PROJECT

8-050/64

TOP SECRET RUFF