

ILLEGIB

Page Denied

Next 3 Page(s) In Document Denied

~~TOP SECRET~~

August 1964

14049
NPIC/R-703/64,
Copy 4
15 Pages

25X1

PHOTOGRAPHIC INTERPRETATION REPORT

SAM INSTALLATIONS IN SOVIET BLOC IDENTIFIED ON KEYHOLE

25X1



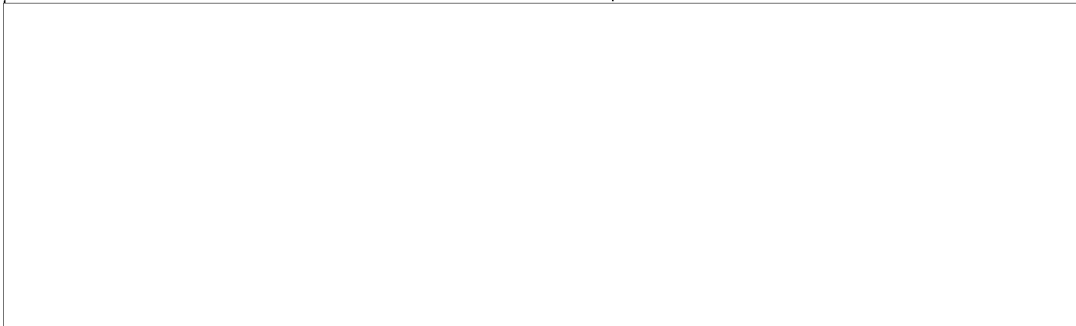
Declass Review by NIMA/DOD



CIA

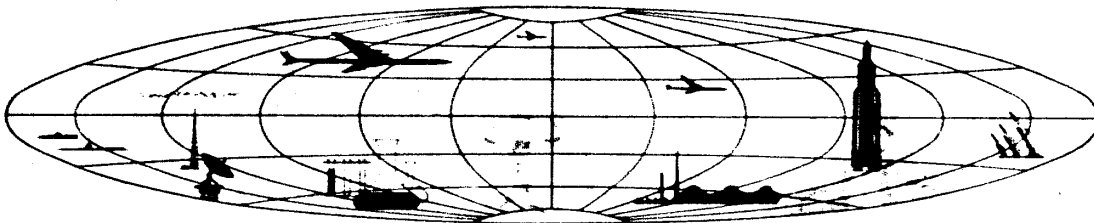


DIA



25X1

NATIONAL PHOTOGRAPHIC INTERPRETATION CENTER



~~TOP SECRET~~

GROUP 1
Excluded from automatic
downgrading and declassification

TOP SECRET



25X1
25X1

25X1

PHOTOGRAPHIC INTERPRETATION REPORT

SAM INSTALLATIONS IN SOVIET BLOC IDENTIFIED ON KEYHOLE



25X1

NPIC/R-703/64

August 1964

NATIONAL PHOTOGRAPHIC INTERPRETATION CENTER

TOP SECRET



25X1

25X1

TOP SECRET



NPIC/R-703/64

25X1
25X1

25X1

SAM INSTALLATIONS IN SOVIET BLOC IDENTIFIED

ON KEYHOLE



25X1

This report has been prepared in response to CIA requirements C-RR4-81,532 and C-RR4-81,533, requesting information on surface-to-air-missile (SAM) sites and SAM support facilities newly identified on photography from



(the cutoff date for the study on which this report is based), 20 SA-2 SAM sites, one probable SA-2 SAM site, two SA-3

sites, one possible SA-3, one SAM storage area, and one SAM training site had been identified on the referenced coverage. (No SAM support facilities were identified.)

Table 1 provides detailed information on each of these installations. Photographs of all 26 are also included (Figures 1-25). All of the SAM sites were observed to be of normal SA-2 or SA-3 size; therefore, site dimensions are not included in this report.

25X1

25X1

TOP SECRET



25X1

25X1

25X1

25X1

Table 1. Data on SAM Installations Identified on [redacted]

Installation 1/	BE No	Geographic Coordinates	Configuration	Construction Status	Additional Description 2/	First Photographic Coverage	Negation Date	Map Reference (USATC Series No; Sheet No; Edition Date)	NPIC No	Figure No
SA-3 SAM Sites										
1. Odesa A28-3		46-29-00N 30-29-40E	G	Complete	Orientation [redacted] normal SA-3; probably uses support facility of adjacent Odesa SAM Site A28-2			0250-8HL, Sep 62	51-L1	1
2. Ussuriysk A94-3		43-52-15N 132-02-15E	Undetermined	Complete	Orientation [redacted] normal SA-3 except that service road enters from the preferred direction of fire; singly deployed; probably uses Ussuriysk SAM Support Facility, 0.5 nm to SSW			0291-1A, Jun 58	50-C	2
3. Postavy MRBM Complex Possible SAM Site (no designator at present)		55-09-10N 26-56-40E	Undetermined	Early stage (U/C)	Orientation undetermined; singly deployed			0168-9HL, Sep 62	178-D	3
SA-2 SAM Sites 1/										
4. Aktogay D91-2		47-25-00N 80-06-00E	Undetermined	Complete	Normal SA-2			0244-4ML, Nov 59	2-B	4
5. Bereza B20-2		52-15-00N 24-50-40E	Undetermined	Complete	Normal SA-2 but no on-site support facility			0168-23HL, Jan 63	6-H	5
6. Brest A33-2		52-13-05N 23-32-20E	Undetermined	U/C; see Additional Description	Has four complete launch revetments and a fifth U/C; no on-site support facility			0168-22HL, Feb 63	14-O	6
7. Bobrysk A27-2		53-08-10N 29-08-40E	Undetermined	Complete	Normal SA-2 but no on-site support facility			0168-20HL, Oct 62	11-J	7

See footnotes at end of table.

25X1

NPIC/R-703/64

TOP SECRET

TOP SECRET

25X1

25X1

25X1
ZDA

25X1 25X1

Table 1. (Continued)

Installation 1/	BE No	Geographic Coordinates	Configuration	Construction Status	Additional Description 2/	First Photographic Coverage	Nega-tion Date	Map Reference (USATC Series 200; Sheet No, Edition Date)	NPIC No	Figure No
5. V Grodno C35-2		51-07-40N 23-10-00E	Link	Complete	Normal SA-2 but no on-site support facilities			0168-12AL, 22-K Nov 62	22-K	5
12. Kalinin B31-2		57-00-55N 35-27-50E	Undetermined	Complete	Normal SA-2 but no on-site support facility			0154-17HL, 20-P Jan 64	20-P	12
13. Kalinkovichi A16-2		52-06-40N 29-20-00E	Undetermined	Complete	Normal SA-2; nearly adjacent to Kalinkovichi SAM Site A17-2			0168-25HL, 110-F Dec 62	110-F	13
14. Kalinkovichi A17-2		52-06-30N 29-19-50E	Undetermined	Complete	Probable training role indicated by proximity of Kalinkovichi SAM Site A16-2			0168-25HL, 110-G Dec 62	110-G	13
15. Moscow E27-2		55-41-10N 36-14-10E	Star	Complete	Probable training role indicated by proximity of a barracks area			0167-4HL, 122-Q2 Mar 63	122-Q2	14
16. Mukachevo B06-2		48-33-30N 23-00-00E	Undetermined	Complete	Probable training role indicated by proximity of a barracks area			0232-24HL, 107-U Aug 63	107-U	15
17. Nadromaya MRBM Complex C21-2		49-19-15N 24-25-10E	Fan; see Additional Description	Complete	Site layout is adapted to topography but is generally fan shaped			0232-25, 183-V Jun 63	183-V	16

See footnotes at end of table.

TOP SECRET

- 3 -

25X6

TOP SECRET

NPIC/R-703/64

25X1

25X1

25X1
25X1

25X1

Table 1 (Continued)

Installation 1/	BE No.	Geographic Coordinates	Configuration	Construction Status	Additional Description 2/	First Photographic Coverage	Negation Date	Map Reference (USATC Series 200; Sheet No, Edition Date)	NPIC No	Figure No
19. Plzen Probable SAM Site (no designator at present) (in Czechoslovakia)	None	49-33-52N 13-41-50E	Undetermined	U/C; see Additional Description	Disruptive ground pattern precludes determination of construction status; on-site support facility U/C			0231-19HL, Mar 64	136-H	18
20. Ryazan B14-2		54-27-00N 39-59-40E	Undetermined	U/C; see Additional Description	Central guidance revetment and two launch revetments appear complete; rest of site is U/C			0166-6HL, Nov 62	20-K	19
21. Rzhev B34-2		56-31-00N 31-04-10E	Link	Complete	Normal SA-2 but no on-site support facility			0154-21HL, Mar 64	50-F	20
22. Saratov A31-2		51-43-20N 45-17-30E	Star	Complete	Normal SA-2			0235-2HL, Jan 64	14-R	21
23. Temopol B35-2		49-42-10N 25-30-20E	Undetermined	Complete	Normal SA-2 but no build revetments or on-site support facility			0233-11HL, Jun 62	58-B	22
24. Uglichy SAM Complex A36-2		64-55-00N 117-55-00E	Undetermined	Complete	Six launch positions (unrevetted) form circular pattern; inner and outer roads are rectangular; no on-site support facility			0075-17, Feb 58	2-O	23

see footnotes at end of table.

25X1

25X6

TOP SECRET

TOP SECRET

25X1

25X1

25X1

25X1

NPIC/R-703/64

Table 1. (Continued)

Installation 1/	BE No	Geographic Coordinates	Configuration	Construction Status	Additional Description 2/	First Photographic Coverage	Negation Date	Map Reference (USATC Series 200; Sheet No, Edition Date)	NPIC No	Figure No
<u>SAM Storage Area</u>										
25. Leningrad	None	59-43-00N 29-14-00E	NA	Complete	Is within Leningrad Southwest Probable AMM Complex; consists of open storage of missiles and related SA-3 equipment, not an SA-3 site, contrary to NPIC/R-539/63 (Missile OAK) and R-439/61; two launchers with two missiles (approx 20 feet long) each, and 12 vans/U/V vehicles observed	25X1		0153-IHL, May 63	None	24
<u>SAM Training Site</u>										
26. Leningrad (no designator)	None	59-52-15N 29-34-10E	Component sites: fan and undetermined	Complete	Consists of two SA-2s adjacent to barracks area similar to that at Leningrad SAM Training Site C08			0153-IHL, May 63	None	25

1. Located in the USSR except as indicated.
2. The only equipment visible was at the Leningrad SAM Storage Area (number 25 above).
3. Numbers in this column are keyed to the photography referenced on pages 12 and 13 (coverage on which installations identified).
4. Except as noted, sites have normal on-site support facilities. (A normal facility usually consists of one large building approximately 160 by 55 feet, one small building approximately 60 by 35 feet, and 3 to 5 small buildings each approximately 70 by 35 feet.)

TOP SECRET

TOP SECRET

NPIC/R-703/64

25X1

25X1
25X1

25X1

TOP SECRET



NPIC/R-703/64

25X1

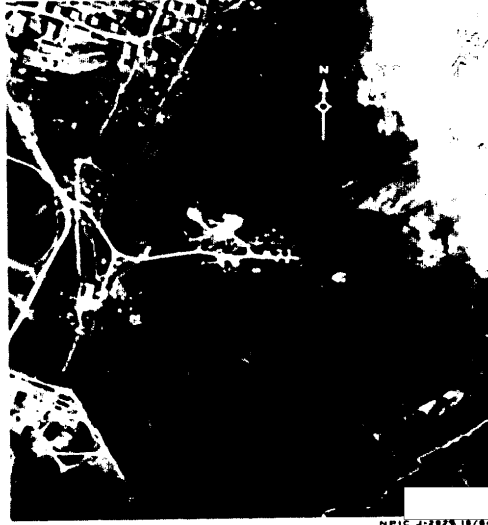
25X1

25X1



25X1

FIGURE 1. ODESSA SAM SITE A28-3.



25X1

FIGURE 2. USSURIYSK SAM SITE A04-3.



25X1

FIGURE 3. POSTAVY MRBM COMPLEX POSSIBLE SA-3 SAM SITE (NO DESIGNATOR AT PRESENT).



25X1

FIGURE 4. AKTOGAY SAM SITE D03-2.

TOP SECRET



25X1

25X1

TOP SECRET

NPIC/R-703/64



FIGURE 5. BEREZA SAM SITE B20-2.

25X1

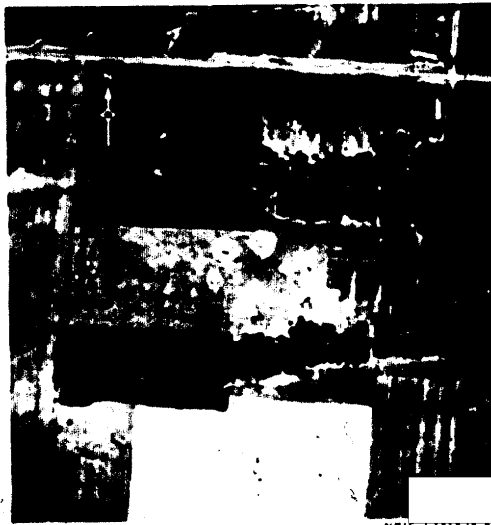


FIGURE 6. BREST SAM SITE A33-2.

25X1



FIGURE 7. BOBRUYSK SAM SITE A27-2.

25X1



FIGURE 8. GRODNO SAM SITE C35-2.

25X1

TOP SECRET

25X1
25X1
25X1

25X1
25X1

TOP SECRET



NPIC/R-703/64



25X1

FIGURE 9. GUSTROW SAM SITE A01-2.



25X1

FIGURE 10. HALLE SAM SITE A19-2.

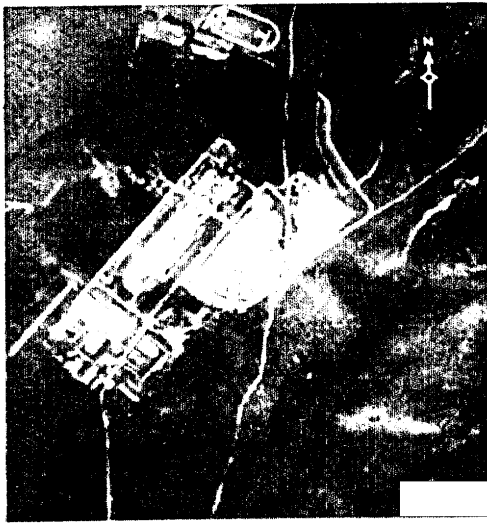


FIGURE 11. JENA SAM SITE A25-2.

25X1



FIGURE 12. KALININ SAM SITE B31-2.

25X1

- 8 -

TOP SECRET



25X1
25X1

25X1

25X1

25X1

TOP SECRET



NPIC R-703/64

25X1
25X1

25X1



25X1

FIGURE 13. KALINKOVICHI SAM SITES A16-2 AND A17-2.



25X1

FIGURE 14. MOSCOW SAM SITE E27-2.



FIGURE 15. MUKACHEVO SAM SITE B06-2.

25X1

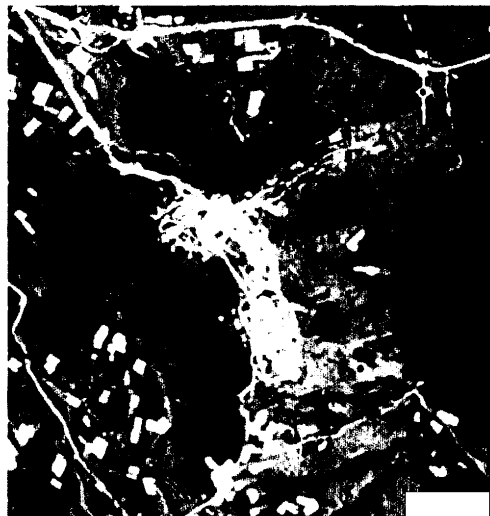


FIGURE 16. NADVORNAYA MRBM COMPLEX SAM SITE C21-2.

25X1

TOP SECRET



25X1

25X1

TOP SECRET



25X1

NPIC/R-703/64



25X1

FIGURE 18. PLZEN PROBABLE SA-2 SAM SITE (NO DESIGNATOR AT PRESENT).



FIGURE 20. RZHEV SAM SITE B34-2.

25X1

TOP SECRET

25X1
25X1

25X1

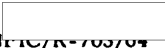
25X1

25X1

TOP SECRET



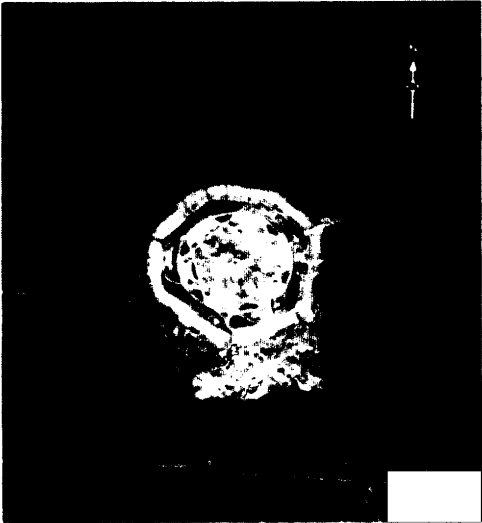
25X1



NPIC J-2848 18/84

25X1
25X1

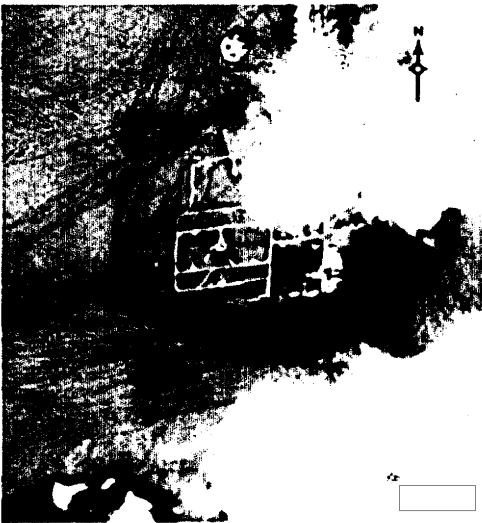
25X1



25X1

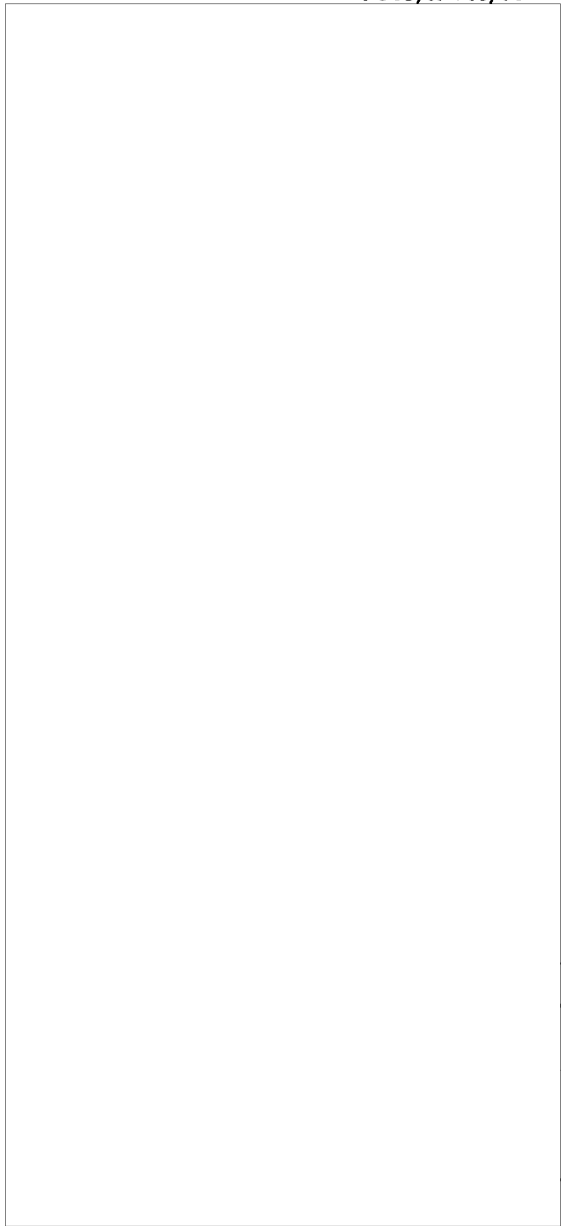
NPIC J-2848 18/84

FIGURE 21. SARATOV SAM SITE A31-2.



NPIC J-2848 18/84

FIGURE 23. UGOLNYY SSM COMPLEX SAM SITE A36-2.



25X1

- 11 -

TOP SECRET



25X1

25X1

25X1

Page Denied

TOP SECRET



NPIC/R-703/64

25X1

REFERENCES (Continued)



REQUIREMENTS

CIA. C-RR4-81,532
C-RR4-81,533

NPIC PROJECTS

N-721 64
N-722 64

TOP SECRET



25X1

25X1

25X1

25X1

25X1