

ILLEGIB

Approved For Release 2001/03/03 : CIA-RDP78T05439A000400180008-4

Approved For Release 2001/03/03 : CIA-RDP78T05439A000400180008-4

NATIONAL PHOTOGRAPHIC  
INTERPRETATION CENTER

~~SECRET~~

NPIC/R-1378/64

25X1A

25X1D

CU/02/007  
INSTALLATION NUMBER

17QLR789557  
UTM COORDINATES

TION

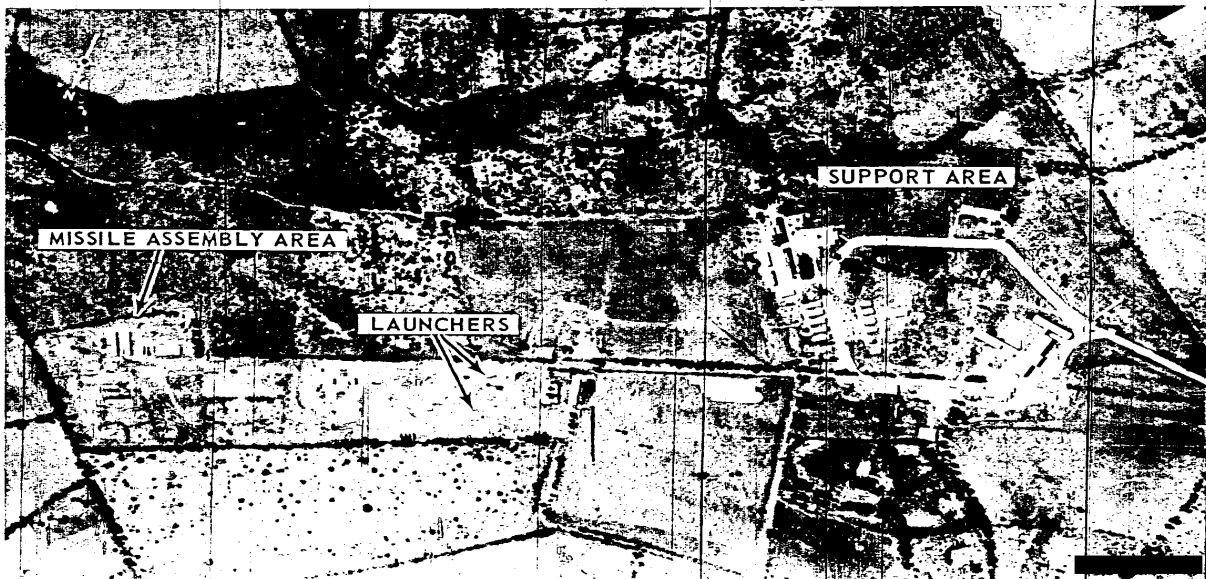
NAME: CAMPO FLORIDO CRUISE-MISSILE SITE

LOCATION: HAYANA PROVINCE, WESTERN MILITARY DISTRICT, 3.2 NM WSW OF  
CAMPO FLORIDO AT 23-06-28N 082-10-55W

DESCRIPTION: TWO UNREVIEWED LAUNCHERS; A MISSILE ASSEMBLY AREA WITH  
CANVAS-COVERED CRUISE-MISSILE CRATES; TWO MISSILE ASSEMBLY TENTS,  
100 X [REDACTED] SQ FT OF FLOOR SPACE; A PLUS-SHAPED MISSILE  
CHECK-OUT TENT, EACH LEG 40 X 15 FT (975 SQ FT OF FLOOR SPACE); AND  
AN OCCUPIED GUIDANCE AREA. FACILITIES -- 12 SINGLE-STORY GABLED  
ROOF BARRACKS: THREE 100 X 20 FT, EIGHT 55 X 20 FT AND ONE 45 X 20  
FT (15,700 SQ FT OF FLOOR SPACE); 3 INTERCONNECTED RIBBED ROOF  
ADMINISTRATIVE BUILDINGS: ONE TWO-STORY 185 X 35 FT, ONE SINGLE-STORY  
150 X 30 FT AND ONE SINGLE-STORY 100 X 30 FT (20,450 SQ FT OF FLOOR  
SPACE); 5 SINGLE-STORY SUPPORT BUILDINGS: ONE COMBINATION FLAT AND  
GABLED ROOF 110 X 80 FT; ONE RIBBED ROOF 100 X 40 FT; AND 3 GABLED  
ROOF: ONE 150 X 20 FT, ONE 60 X 20 FT AND ONE 60 X 50 FT (20,000  
SQ FT OF FLOOR SPACE); 7 MISCELLANEOUS SMALL BUILDINGS; 15 TENTS: 25X1D  
EIGHT [REDACTED] 20 FT (2 REVETTED); 2 NON-SOVIET 30 X 20 FT; THREE [REDACTED] X  
15 FT; AND TWO [REDACTED] SQ FT OF FLOOR SPACE); 4 CANVAS-COVERED  
VEHICLE PARKING AREAS; AND 3 OTHER SMALL CANVAS-COVERED AREAS.

### Declass Review by NIMA/DOD

MAP REFERENCE: AMS SERIES E723, SHEET 3785-II, 4TH ED



~~SECRET~~

25X1D