

Approved For Release 2001/08/21 : CIA-RDP78T05439A000500060038-3

ILLEGIB

Approved For Release 2001/08/21 : CIA-RDP78T05439A000500060038-3

~~TOP SECRET~~

Copy ~~1~~
6 Pages

TCS-80332/65
March 1965

17204

PHOTOGRAPHIC INTERPRETATION REPORT

SOVIET MILITARY ORDER OF BATTLE
BALTIC MD
DECLASSIFICATION REVIEW by NIMA/DOD 4/18/00



CIA



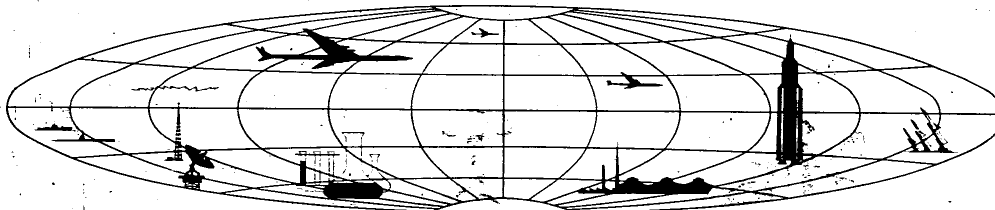
DIA

Handle Via **TALENT - KEYHOLE** Control Only

WARNING

This document contains classified information affecting the national security of the United States within the meaning of the espionage laws U. S. Code Title 18, Sections 793 and 794. The law prohibits its transmission or the revelation of its contents in any manner to an unauthorized person, as well as its use in any manner prejudicial to the safety or interest of the United States or for the benefit of any foreign government to the detriment of the United States. It is to be seen only by personnel especially indoctrinated and authorized to receive TALENT-KEYHOLE information. Its security must be maintained in accordance with KEYHOLE and TALENT regulations.

NATIONAL PHOTOGRAPHIC INTERPRETATION CENTER



~~TOP SECRET~~

GROUP 1
Excluded from automatic
downgrading and declassification

TOP SECRET RUFF

TCS-80332/65

PREFACE

This report is one in a series on Soviet Ground Force and Logistic installations being prepared for a DIA/CIA Panel. The series is being coordinated, published and disseminated by NPIC. The photographic analysis is being performed by the NPIC Photographic Analysis Group, the CIA Photographic Intelligence Division (NPIC), and the Production Center 1P1a (DIA). The photographic analysis for this particular report was performed by the Production Center 1P1a.

In the interest of uniformity, the titles and letter designators for the facilities observed at these installations are identical with those appearing in the project requirement. When a specific facility is not observed both its title and letter designator are omitted in the report.

Titles and letter designators for the various facilities are as follows: (A) railroad service, (B) road service, (C) landing strips, (D) administrative and troop housing areas, (E) storage areas, (F) ammunition storage areas, (G) POL storage areas, (H) other buildings and facilities, (J) equipment storage/maintenance areas, (K) athletic fields, (L) small arms firing ranges, (M) driver training areas, (N) tank/assault gun firing ranges, (P) flat trajectory firing ranges, (Q) artillery emplacements (batteries), (R) infantry or combined arms field training areas or courses, (S) special training facilities, (T) unidentified facilities or tracking activity.

TOP SECRET RUFF

TOP SECRET RUFF

Handle Via
TALENT-KEYHOLE
Control System Only

TCS-80332/65

PLUNGE ARMY BARRACKS
(55-55N 021-52E)
PLUNGE, LITOVSKAYA SSR, USSR
BALTIC MD

25X1A

25X1A

AL No:

25X1C

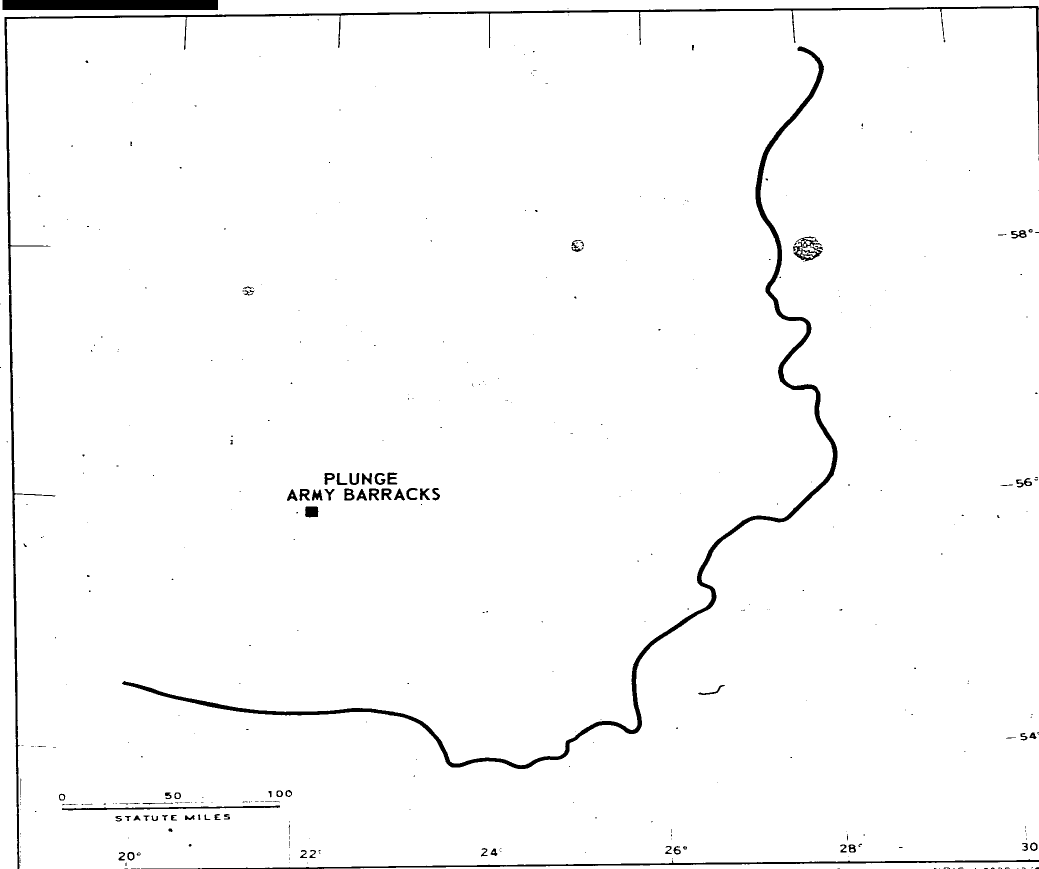


FIGURE 1. LOCATION OF PLUNGE ARMY BARRACKS.

- 2 -

TOP SECRET RUFF

Handle Via
TALENT-KEYHOLE
Control System Only

TOP SECRET RUFF

Handle Via
TALENT-KEYHOLE
Control System Only

TCS-80332/65

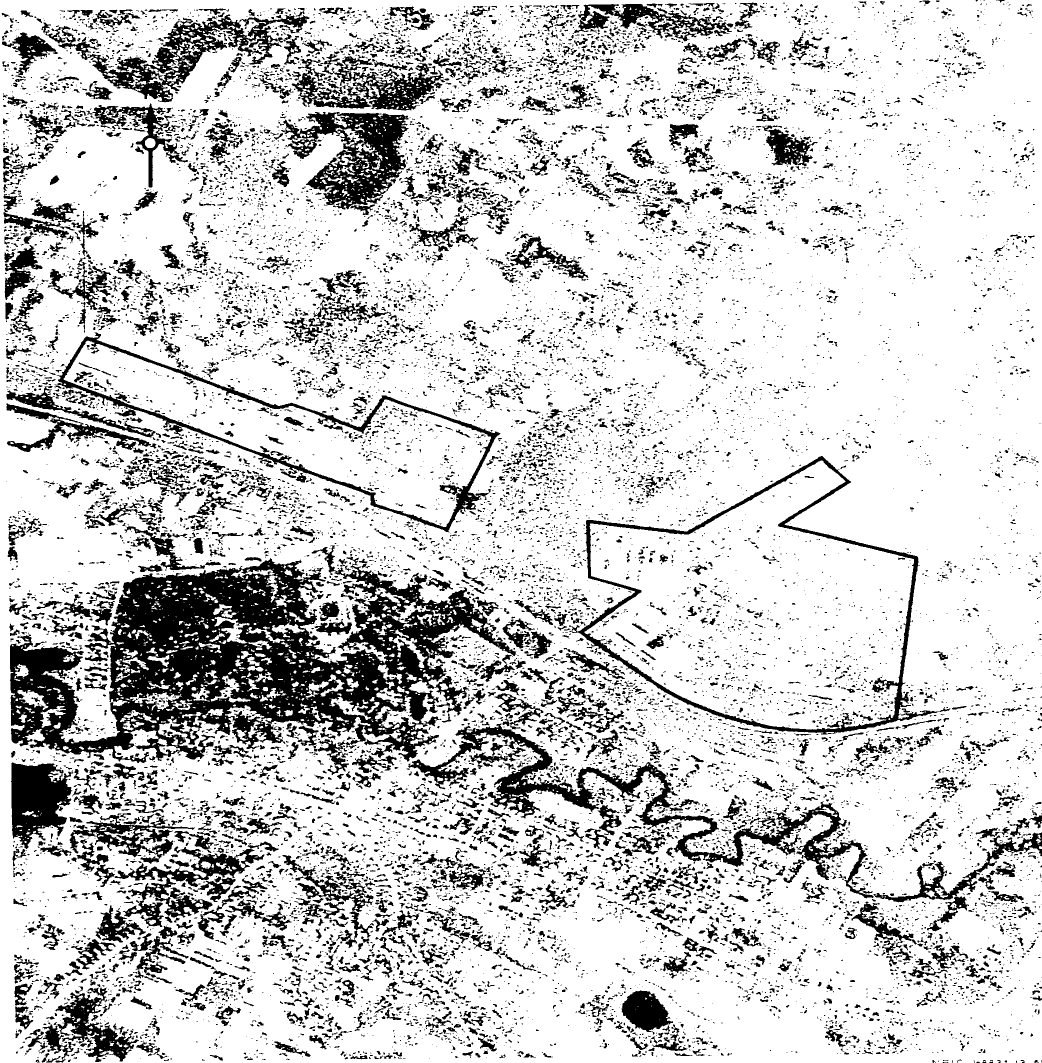


FIGURE 2. PLUNGE ARMY BARRACKS, PLUNGE, USSR, [REDACTED]

25X1D

- 3 -

TOP SECRET RUFF

Handle Via
TALENT-KEYHOLE
Control System Only

TOP SECRET RUFF

Handle Via
TALENT-KEYHOLE
Control System Only

TCS-80332/65

25X1D

SUMMARY

Plunge Army Barracks is located 2 kilometers (km) northeast of Plunge (Figure 1). A secured storage area, with an adjoining trackside dock/storage section, is approximately 1 km northwest of the main barracks area.

The main barracks area covers 250 acres and the storage/receiving area covers 15 acres. Buildings within the 2 sectors include 11 barracks, 5 barracks/administration, 3 administration, 8 storage, 13 support, 6 vehicle storage/maintenance, and 3 probably missile-associated

drive-through buildings. There are also 2 trackside docks. A small-arms firing range is in the main barracks area (Figures 2 and 3).

Interpretable photography on KEYHOLE missions, from [REDACTED] indicated no substantial change in level of usage or physical facilities of the main barracks or storage area. The 3 probably missile-associated buildings were under construction in [REDACTED] but the trackside docks were not present.

25X1D

25X1D

DESCRIPTION OF INSTALLATION

Railroad Service

One rail line and two 350-foot trackside docks (A) apparently serve the adjoining storage and military areas.

Road Service

The areas are served by city streets.

Administration and Troop Housing Area

Area D contains 11 multistory barracks, 5 multistory barracks/administration buildings, 3 multistory, irregularly shaped administration buildings, 1 multistory storage building, and 8 support buildings.

General Storage Areas

Area E1 contains 6 storage buildings.

Area E2 contains 1 multistory storage building, 4 support buildings, and open storage.

Other Buildings

Area H contains 3 drive-through probably missile-associated buildings.

Equipment Storage/Maintenance Area

Area J contains 6 vehicle storage/maintenance buildings (one 195 by 60 feet, three 295 by 160 feet, one 330 by 60 feet, and one 250 by 60 feet) surrounded by a hardstand, and a support building.

Small-Arms Firing Range

Area L is a 600- by 120- foot small-arms firing range surrounded by an earthen wall.

TOP SECRET RUFF

Handle Via
TALENT-KEYHOLE
Control System Only

TCS-80332/65

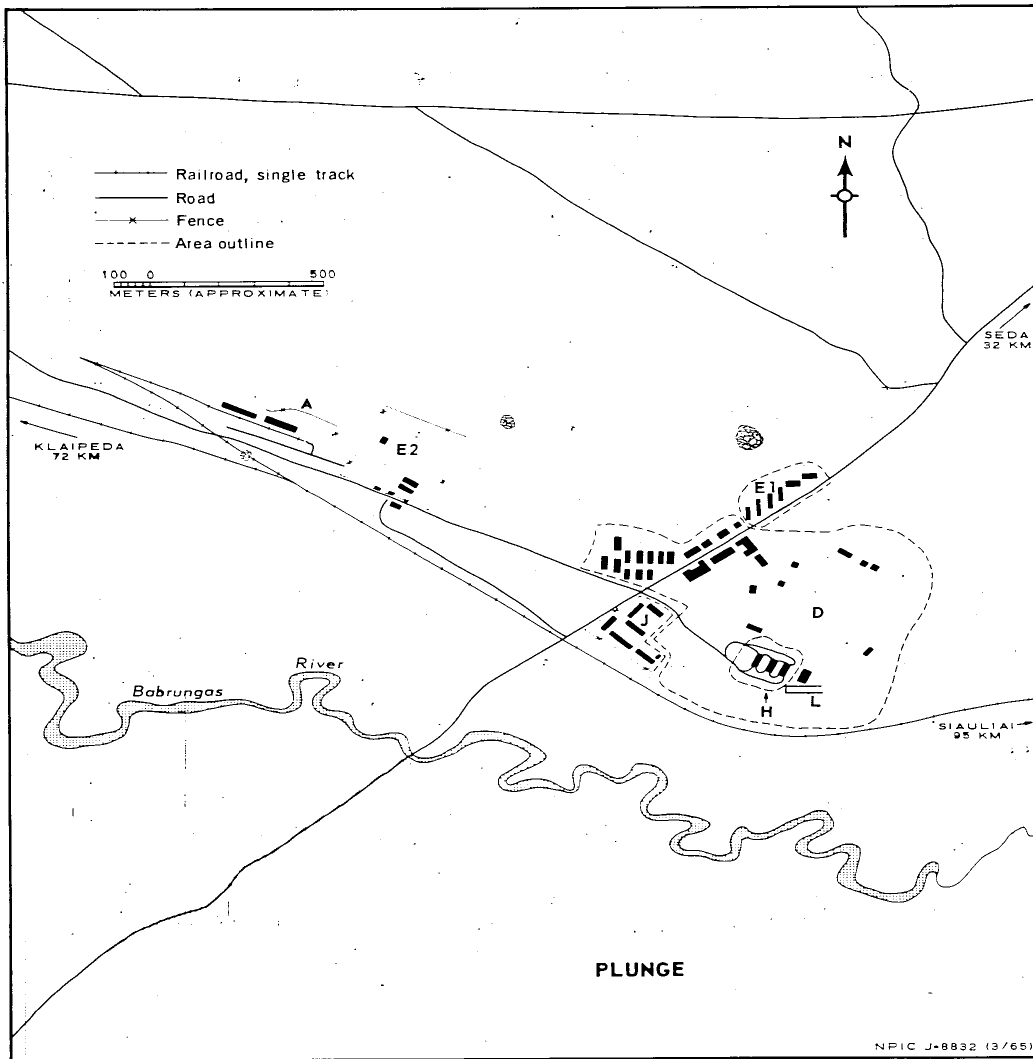


FIGURE 3. PLUNGE ARMY BARRACKS. Sketch compiled from [REDACTED]

25X1D

Handle Via
TALENT-KEYHOLE
Control System Only

TOP SECRET RUFF

Handle Via
TALENT-KEYHOLE
Control System Only

TCS-80332/65

REFERENCES

25X1D



MAPS OR CHARTS

US Air Target Chart, Series 200, Sheet 016S-1HL, 2d ed, Jul 62 (SECRET)

DOCUMENTS

Army. PIB-TK-180-62, *Military Installation, Plunge, USSR*, Nov 62 (TOP SECRET RUFF)

REQUIREMENT

DIAAP-1-15-64 (partial answer)

NPIC PROJECT

11904 64

TOP SECRET RUFF

Handle Via
TALENT-KEYHOLE
Control System Only