

ILLEGIB

Approved For Release 2001/06/09 : CIA-RDP78T05439A000500140025-8

Approved For Release 2001/06/09 : CIA-RDP78T05439A000500140025-8

~~TOP SECRET~~

17770

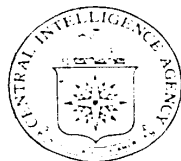
Copy  
6 Pages

TCS-80704 65  
June 1965

Declass review by NIMA/DoD

PHOTOGRAPHIC INTERPRETATION REPORT

# SOVIET MILITARY ORDER OF BATTLE MOSCOW MD



CIA



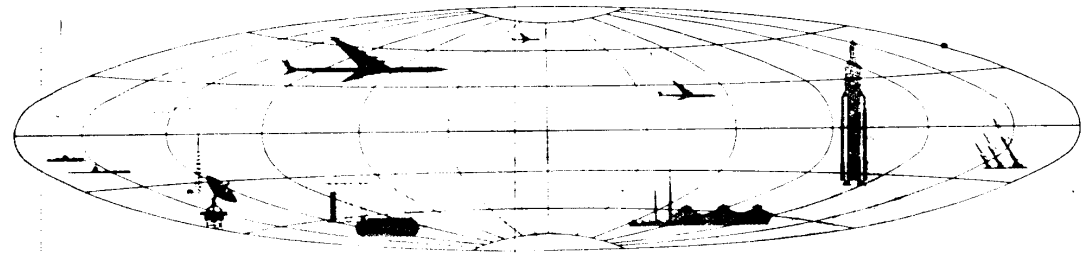
DIA

Handle Via **TALENT - KEYHOLE** Control Only

WARNING

This document contains classified information affecting the national security of the United States within the meaning of the espionage laws U. S. Code Title 18, Sections 793 and 794. The law prohibits its transmission or the revelation of its contents in any manner to an unauthorized person, as well as its use in any manner prejudicial to the safety or interest of the United States or for the benefit of any foreign government to the detriment of the United States. It is to be seen only by personnel especially indoctrinated and authorized to receive TALENT-KEYHOLE information. Its security must be maintained in accordance with KEYHOLE and TALENT regulations.

NATIONAL PHOTOGRAPHIC INTERPRETATION CENTER



~~TOP SECRET~~

GROUP 1  
EXCLUDED FROM AUTOMATIC  
DOWNGRADING AND  
DECLASSIFICATION

TOP SECRET RUFF

Handle Via  
TALENT-KEYHOLE  
Control System Only

TCS-80704/65

### PREFACE

This report is one in a series on Soviet Ground Force and Logistic installations being prepared for a DIA/CIA Panel. The series is being coordinated, published and disseminated by NPIC. The photographic analysis is being performed by the NPIC Photographic Analysis Group, the CIA Photographic Intelligence Division (NPIC), and the Production Center 1P1a (DIA). The photographic analysis for this particular report was performed by the NPIC Photographic Analysis Group.

In the interest of uniformity, the titles and letter designators for the facilities observed at these installations are identical with those appearing in the project requirement. When a specific facility is not observed both its title and letter designator are omitted in the report.

Titles and letter designators for the various facilities are as follows: (A) railroad service, (B) road service, (C) landing strips, (D) administrative and troop housing areas, (E) storage areas, (F) ammunition storage areas, (G) POL storage areas, (H) other buildings and facilities, (J) equipment storage/maintenance areas, (K) athletic fields, (L) small arms firing ranges, (M) driver training areas, (N) tank/assault gun firing ranges, (P) flat trajectory firing ranges, (Q) artillery emplacements (batteries), (R) infantry or combined arms field training area or courses, (S) special training facilities, (T) unidentified facilities or tracking activity.

- 1 -

Handle Via  
TALENT-KEYHOLE  
Control System Only

TOP SECRET RUFF

TOP SECRET RUFF

Handle Via  
TALENT-KEYHOLE  
Control System Only

TCS-80704/65

KOLOMNA AMMUNITION DEPOT SOUTHWEST  
(54-55N 038-30E)  
KOLOMNA, MOSKOVSKAYA OBLAST, USSR  
MOSCOW MD

25X1A

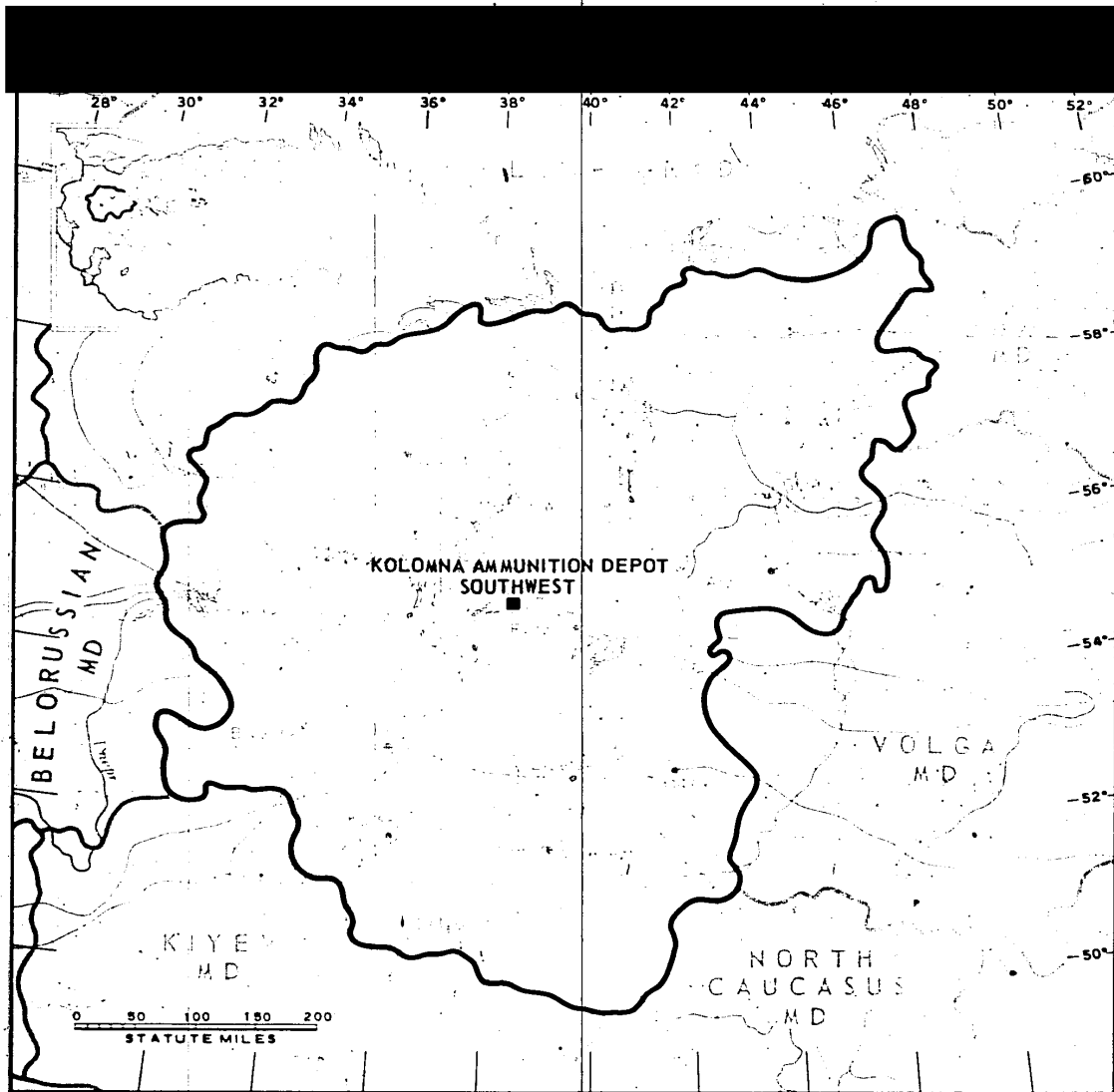


FIGURE 1. LOCATION OF KOLOMNA AMMUNITION DEPOT SOUTHWEST.

NPIC K-1846 (8/65)

TOP SECRET RUFF

Handle Via  
TALENT-KEYHOLE  
Control System Only

TOP SECRET RUFF

Handle Via  
TALENT-KEYHOLE  
Control System Only

TCS-80704/65

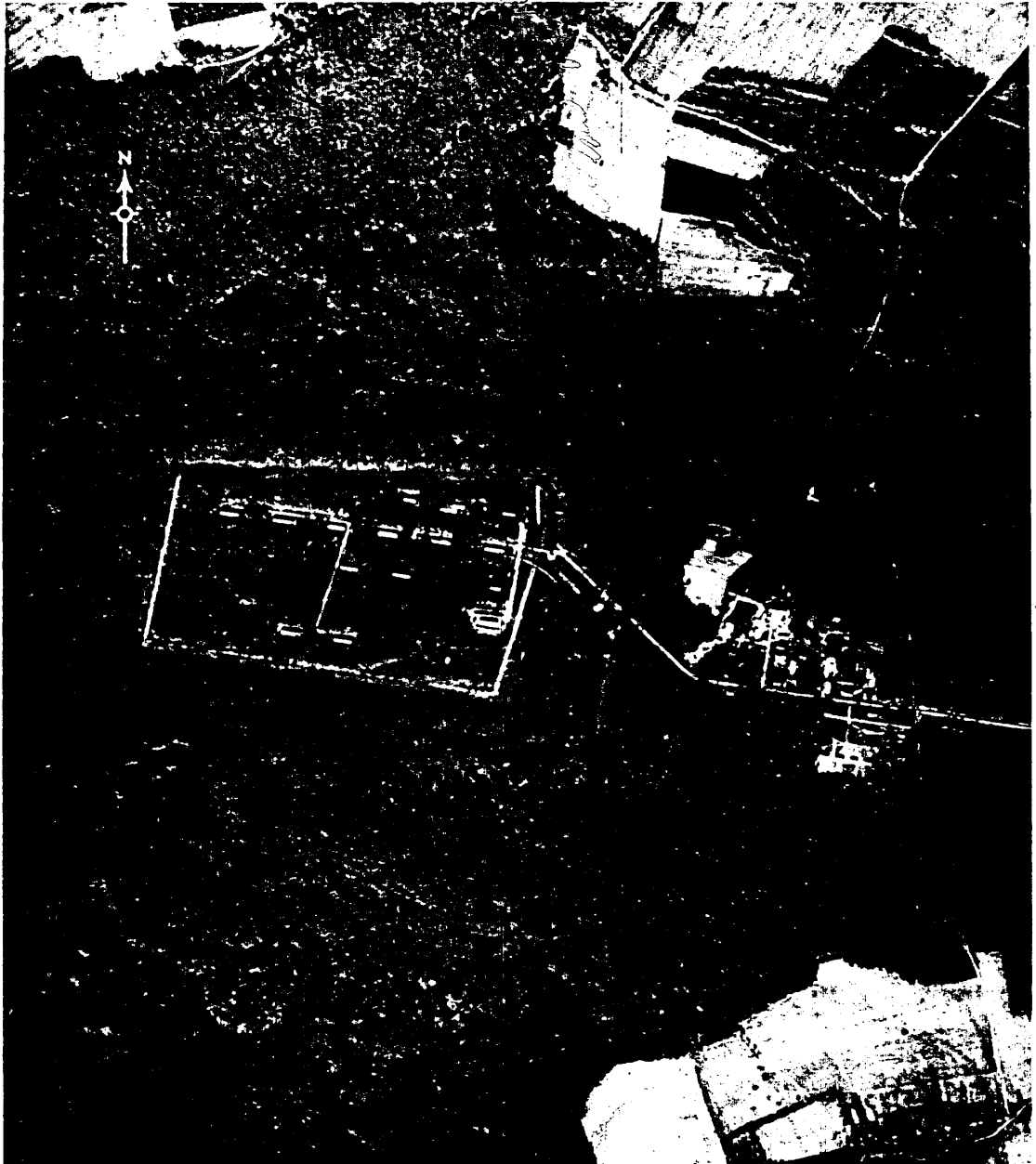


FIGURE 2. KOLOMNA AMMUNITION DEPOT, SOUTHWEST, KOLOMNA, USSR

NPIC K-1847 (8/85)

- 3 -

25X1D

Handle Via  
TALENT-KEYHOLE  
Control System Only

TOP SECRET RUFF

TOP SECRET RUFF

Handle Via  
TALENT-KEYHOLE  
Control System Only

TCS-80704/65

SUMMARY

Kolomna Ammunition Depot Southwest is located 25 kilometers (km) south-southwest of Kolomna and 9 km north of Ozery (Figure 1).

The installation covers approximately 150 acres and consists of a double-secured ammunition storage area and an adjacent support area. The storage area contains 15 ammunition storage buildings, 2 small explosives storage buildings, and 5 support buildings. The support

area contains 1 administration building, 4 barracks, 9 quarters, and 9 support buildings (Figures 2 and 3).

The area was covered by [REDACTED] KEYHOLE missions between [REDACTED]. One barracks was possibly under construction on [REDACTED] coverage. Light activity is observed on all coverage.

25X1D

25X1D

25X1D

DESCRIPTION OF INSTALLATION

Railroad Service

The installation is served by a spur from the Kolomna-Ozery rail line.

Road Service

A secondary road provides access to Ozery and Kolomna.

Administration and Troop Housing Area

Area D contains 1 administration building,

4 barracks (1 possibly under construction), 9 quarters, and 9 support buildings.

Ammunition Storage Area

Area F contains 15 large ammunition storage buildings (1 revetted), 2 small explosives storage buildings, and 5 support buildings.

Handle Via  
TALENT-KEYHOLE  
Control System Only

TOP SECRET RUFF

TOP SECRET RUFF

Handle Via  
TALENT-KEYHOLE  
Control System Only

TCS-80704/65

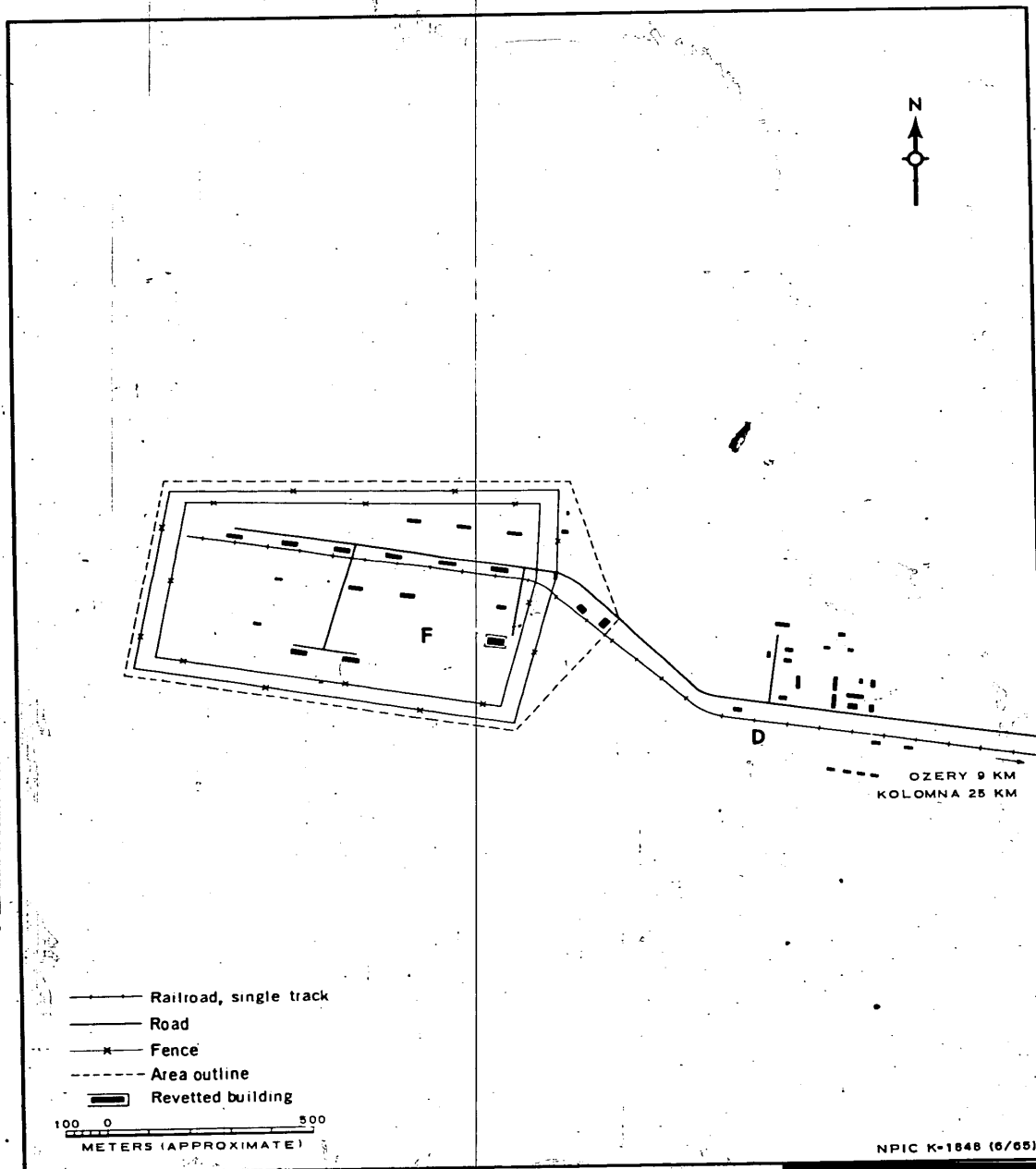


FIGURE 3. KOLOMNA AMMUNITION DEPOT SOUTHWEST. Sketch compiled from

25X1D

- 5 -

Handle Via  
TALENT-KEYHOLE  
Control System Only

TOP SECRET RUFF

TOP SECRET RUFF

Handle Via  
TALENT-KEYHOLE  
Control System Only

TCS-80704/65

REFERENCES

PHOTOGRAPHY



25X1D

MAPS OR CHARTS

US Air Target Chart, Series 200, Sheet 0167-10HL, 2d ed, Feb 63 (SECRET)

REQUIREMENT

C-RR4-81,733 (partial answer)

NPIC PROJECT

11709/64

- 6 -

TOP SECRET RUFF

Handle Via  
TALENT-KEYHOLE  
Control System Only