

**Page Denied**

Next 3 Page(s) In Document Denied

**TOP SECRET RUFF**

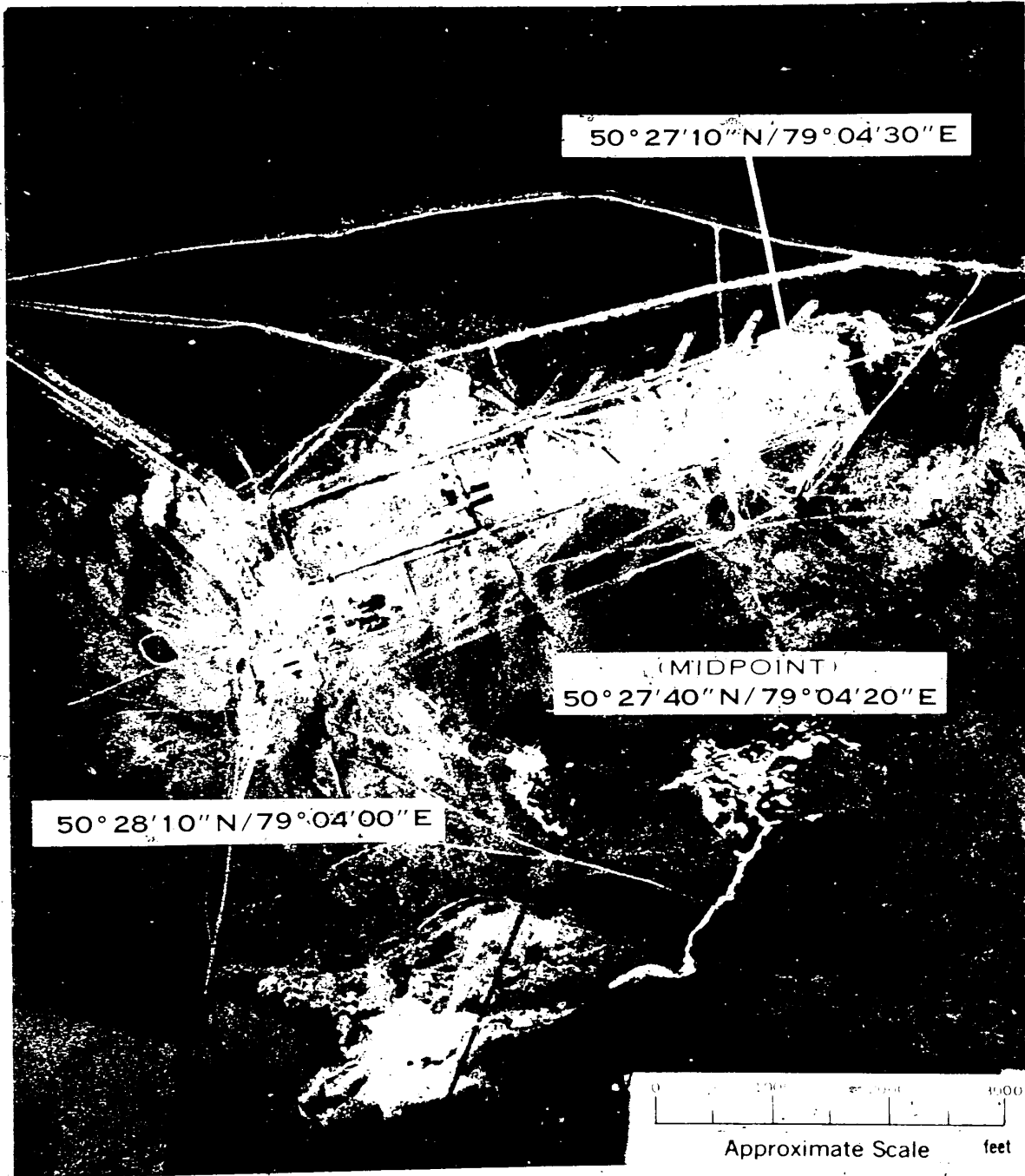
**DOLON**

25X1

25X1

**VN 48 P9**

90% ASSURANCE 3500 FT. ON DOD WGS 60  
ELEV. 660 FT. ± 80 FT.



**TOP SECRET RUFF**

6042-21

25X1  
SECRET

25X5

**Page Denied**

# ENGELS

[Redacted]

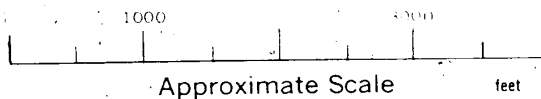
25X1

90% ASSURANCE 500 FT. ON DOD WGS 60  
ELEV. 130 FT. ± 10 FT.

VN 48 P9  
51° 25' 26" N / 46° 15' 15" E

(MIDPOINT)  
51° 25' 21" N / 46° 15' 29" E

VN 33 P2  
51° 25' 16" N / 46° 15' 44" E



**TOP SECRET RUFF**

[Redacted]

25X1

6042-23

25X5

**Page Denied**

**TOP SECRET RUFF**

**KALININ**

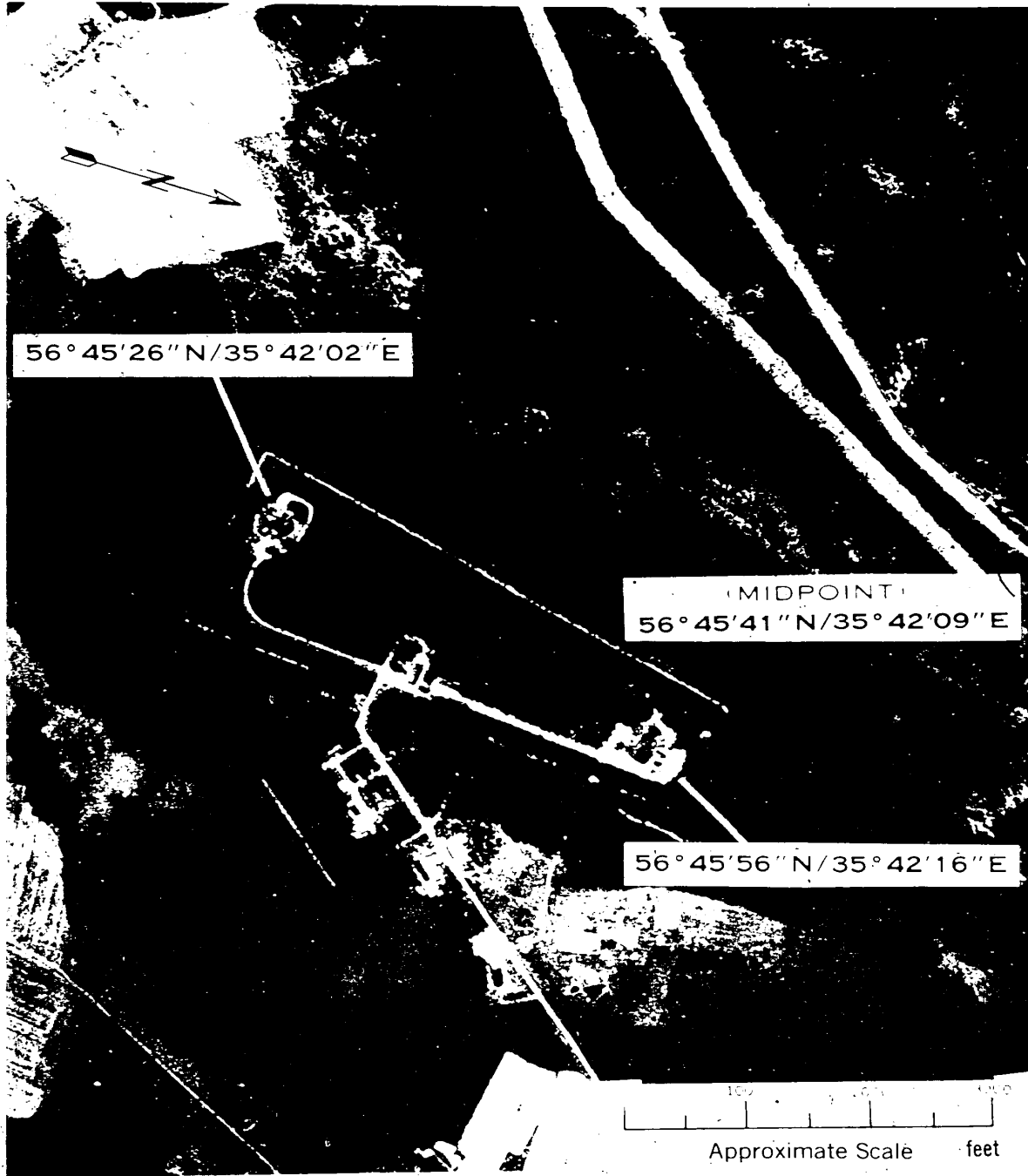
**VN 48 P9**

25X1

-25X1



**90% ASSURANCE 250 FT. ON DOD WGS 60  
ELEV. 450 FT. ± 20 FT.**



**TOP SECRET RUFF**



25X1

6042-25

**Page Denied**

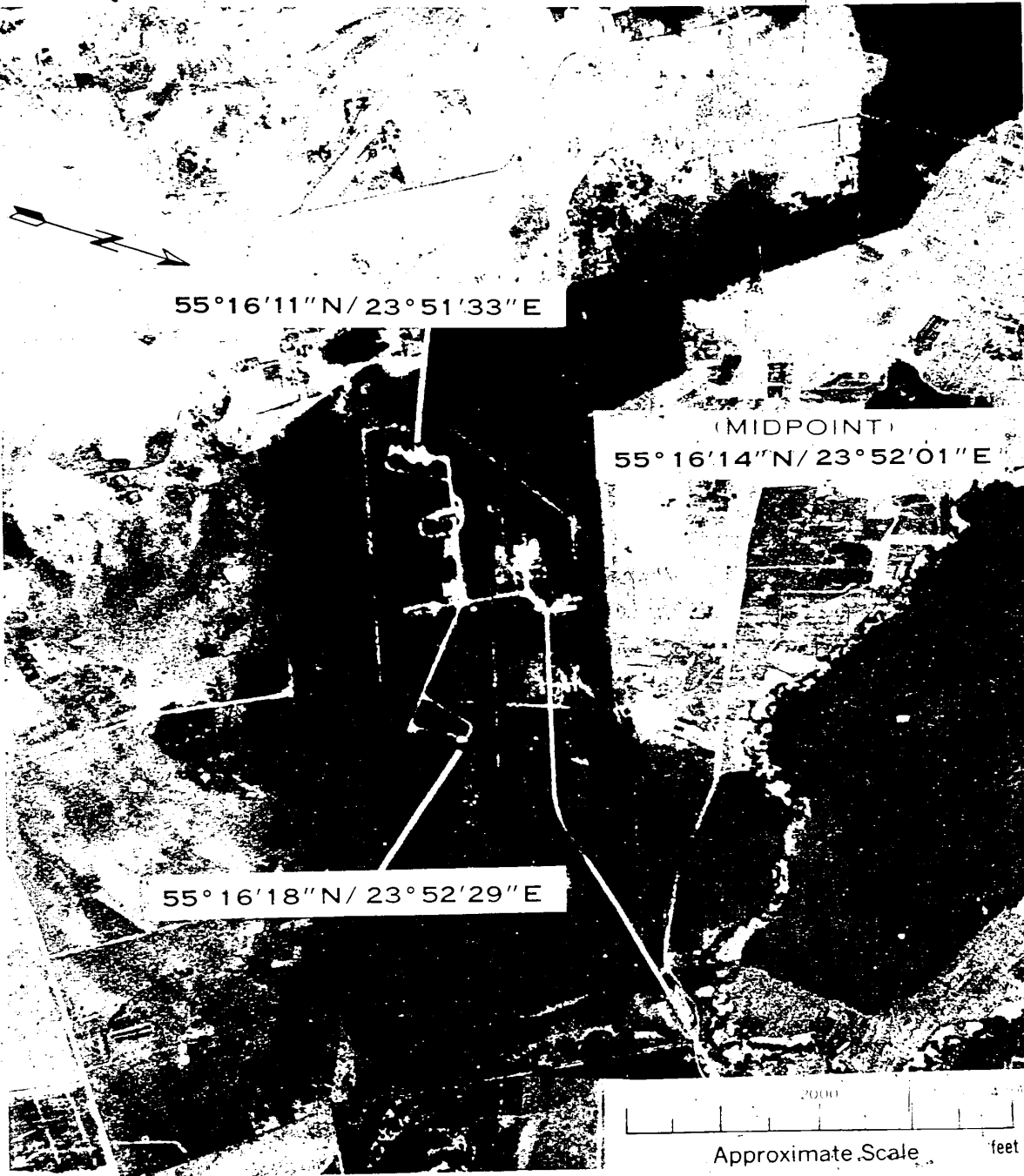
# KEDAINIAI

25X1

VN 48 P9

25X1

90% ASSURANCE 170 FT. ON DOD WGS 60  
ELEV. 170 FT. ± 10 FT.



**TOP SECRET RUFF**

6042-27

25X1



**Page Denied**

**TOP SECRET RUFF**

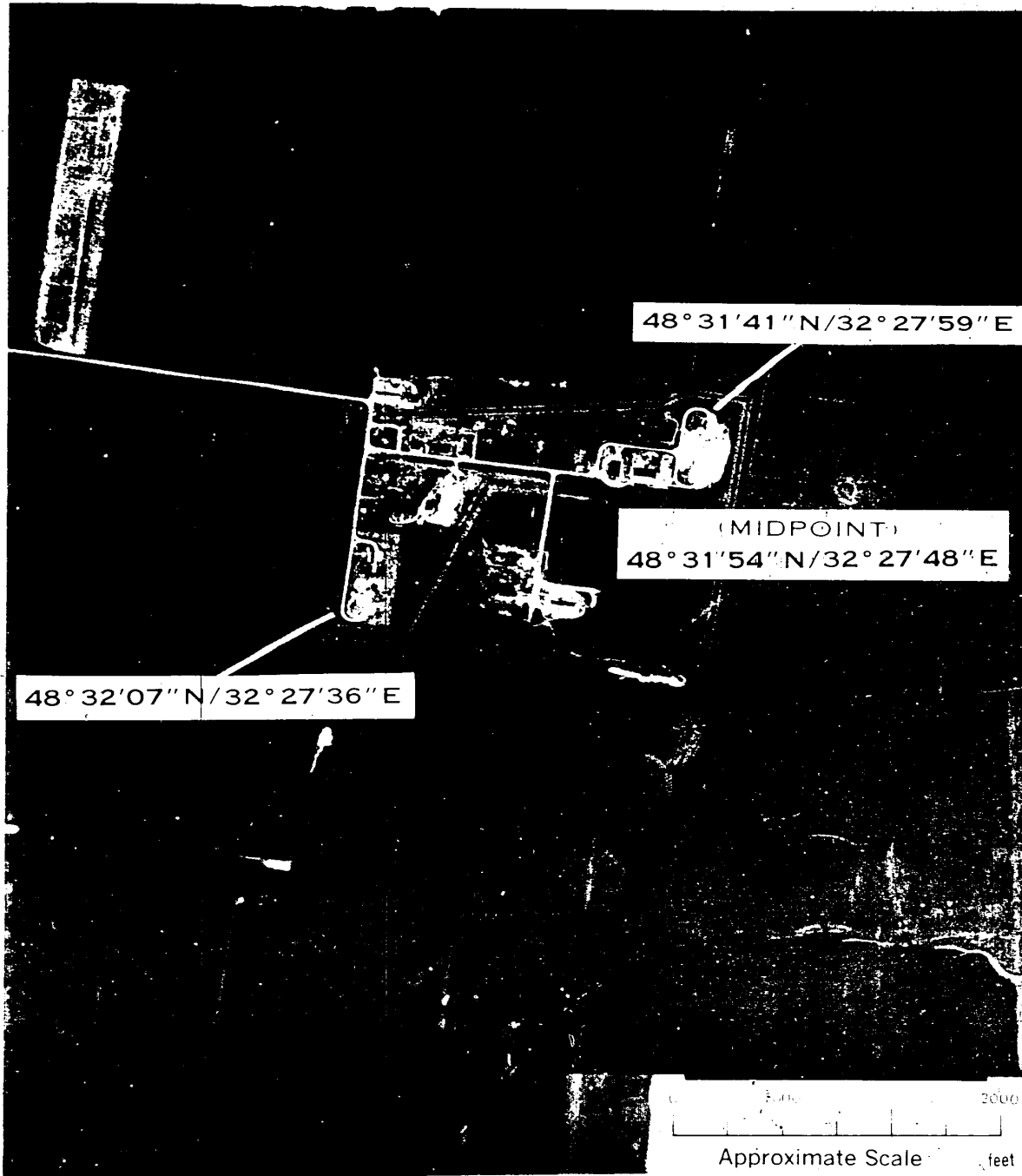
**KIROVOGRAD**

25X1

25X1

VN 48 P9

90% ASSURANCE 250 FT. ON DOD WGS 60  
ELEV. 570 FT. ± 20 FT.



**TOP SECRET RUFF**

6042-29

25X1

Declassified in Part - Sanitized Copy Approved for Release 2012/06/05 : CIA-RDP78T05439A000500210060-1

25X2

**Page Denied**

Next 1 Page(s) In Document Denied

Declassified in Part - Sanitized Copy Approved for Release 2012/06/05 : CIA-RDP78T05439A000500210060-1

**TOP SECRET RUFF**

**MOZDOK**

**VN 48 P9**

[Redacted]

25X1

**90% ASSURANCE 250 FT. ON DOD WGS 60  
ELEV. 540 FT. ± 30 FT.**



**TOP SECRET RUFF**

6042-33

[Redacted]

25X1

**Page Denied**

**TOP SECRET RUFF**

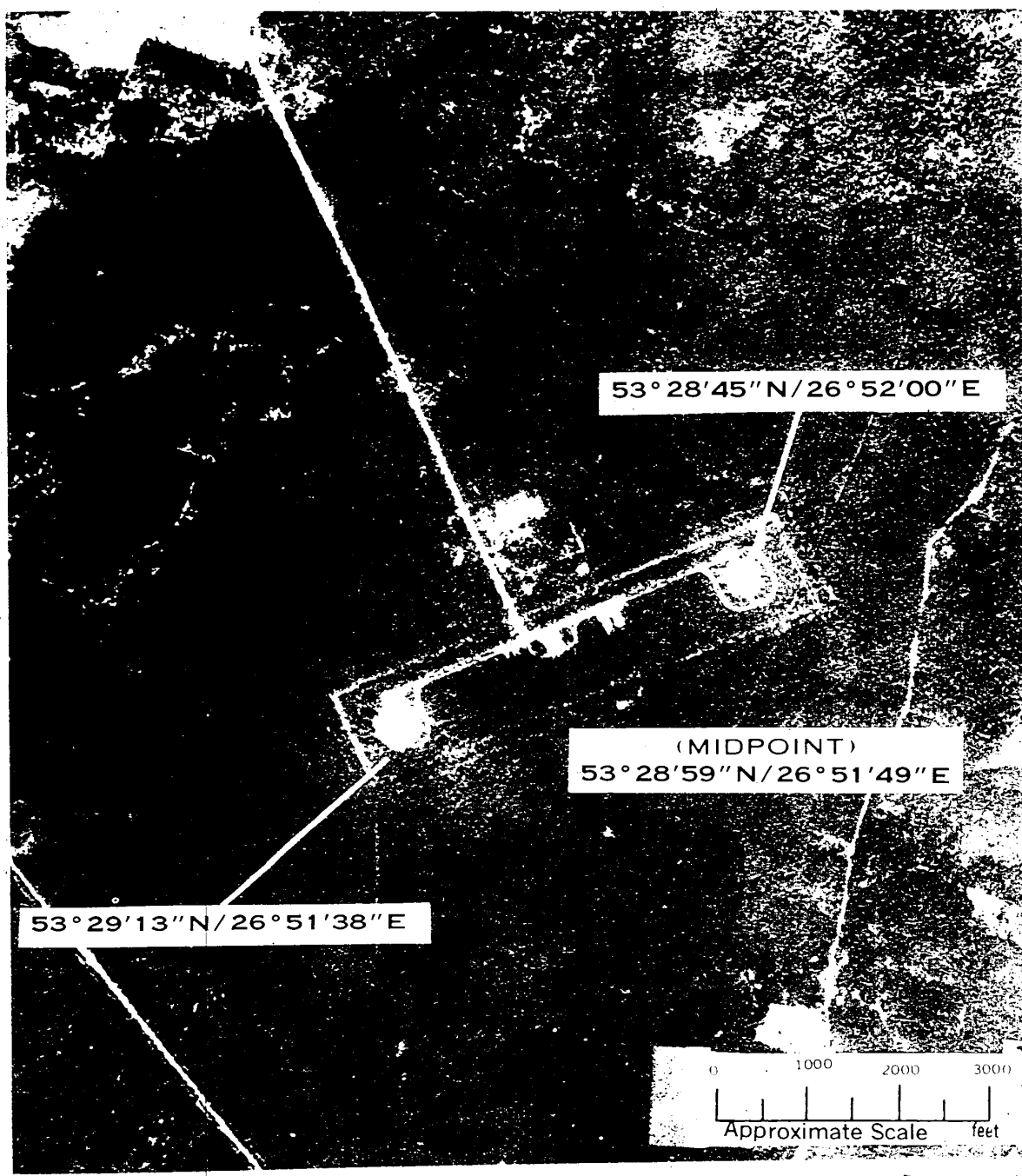
**NOVAYA MEZINOVKA**

25X1

25X1

VN 48 P9

90% ASSURANCE 200 FT. ON DOD WGS 60  
ELEV. 610 FT. ± 20 FT.



**TOP SECRET RUFF**

6042-35



25X1

**Page Denied**

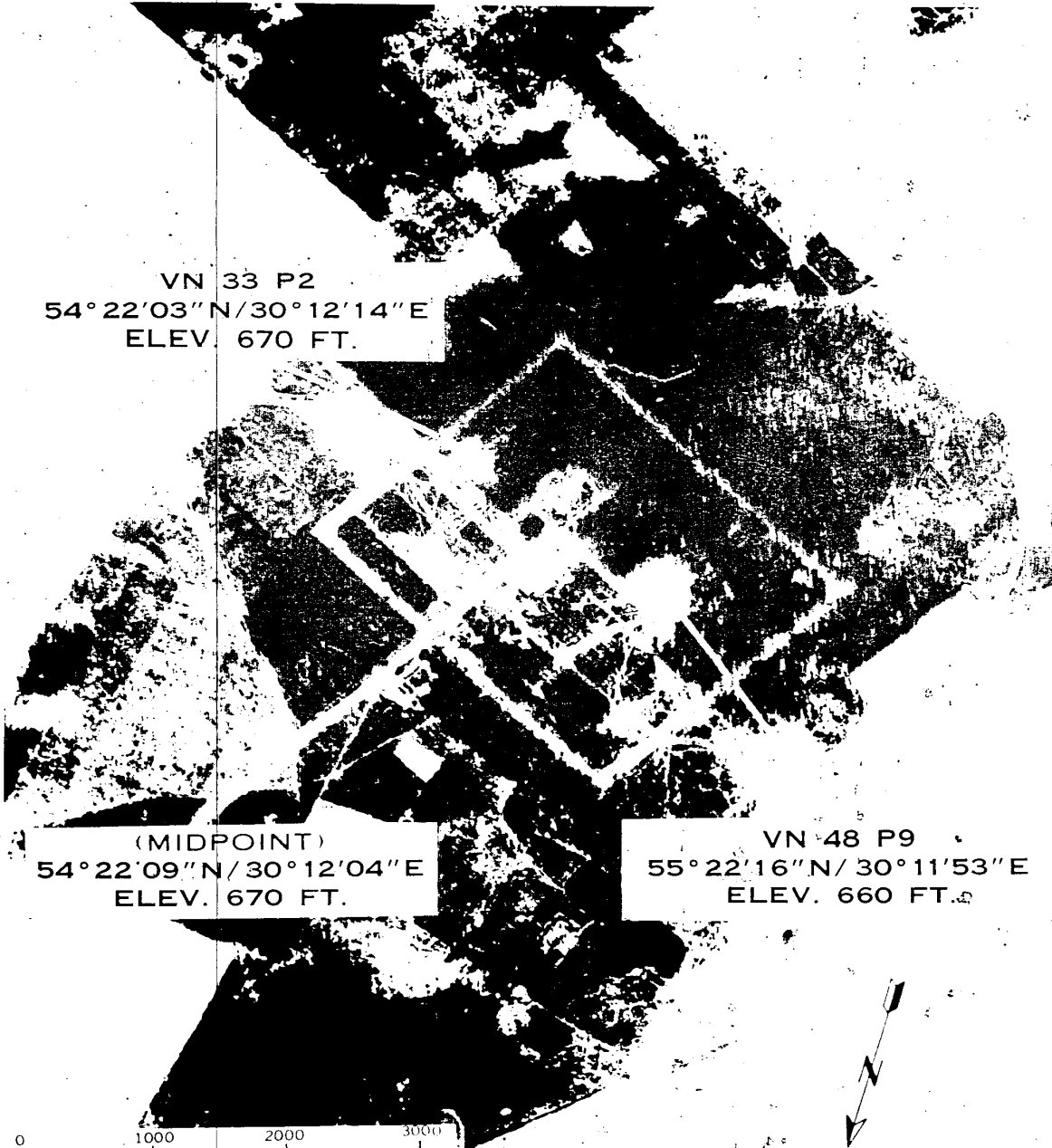
**TOP SECRET RUFF**

**ORSHA**

[Redacted]

25X1

90% ASSURANCE. 200 FT. ON DOD WGS 60



VN 33 P2  
54° 22' 03" N / 30° 12' 14" E  
ELEV. 670 FT.

(MIDPOINT)  
54° 22' 09" N / 30° 12' 04" E  
ELEV. 670 FT.

VN 48 P9  
55° 22' 16" N / 30° 11' 53" E  
ELEV. 660 FT.



Approximate Scale feet



**TOP SECRET RUFF**

6042-37

[Redacted]

25X1



**Page Denied**

~~TOP SECRET RUFF~~

# POCHINOK

25X1

25X1

VN 48 P9

90% ASSURANCE 350 FT. ON DOD WGS 60  
ELEV. 610 FT. ± 20 FT.



~~TOP SECRET RUFF~~

25X1

6042-39

**Page Denied**

# PRILUKI

25X1

25X1

90% ASSURANCE 250 FT. ON DOD WGS 60



TOP SECRET RUFF

6042-41

25X1

**Page Denied**

**TOP SECRET RUFF**

**SHCHUCHIN**

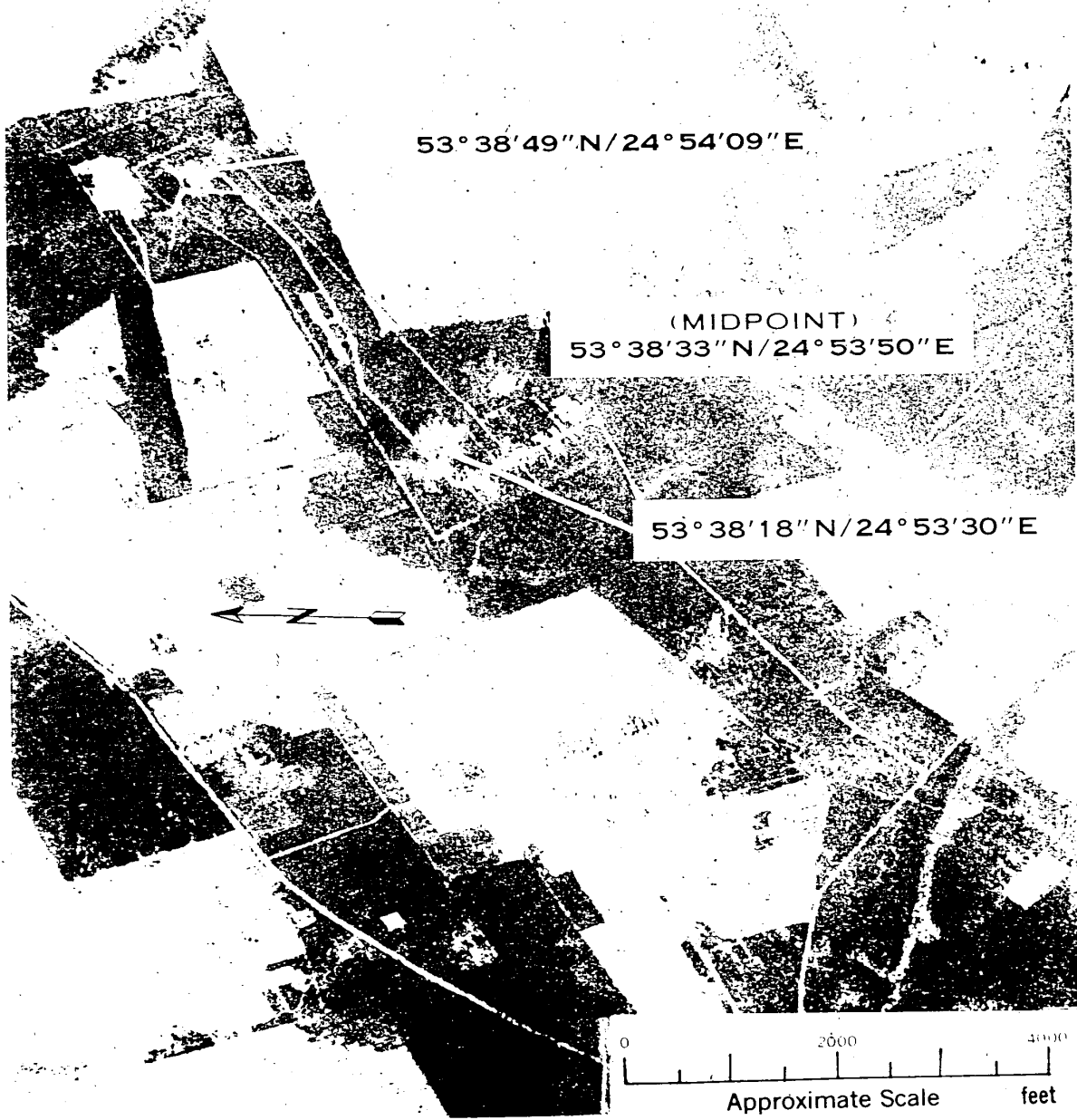
**VN 48 P9**

25X1

25X1



**90% ASSURANCE 250 FT. ON DOD WGS 60  
ELEV. 560 FT. ± 20 FT.**



**TOP SECRET RUFF**

25X1

6042-43



**Page Denied**

**TOP SECRET RUFF**

**SIAULIAI**

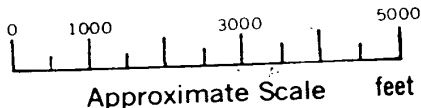
25X1

90% ASSURANCE 250 FT. ON DOD WGS 60  
ELEV. 350 FT. ± 20 FT.

VN 48 P9  
55° 57' 07" N / 23° 28' 28" E

(MIDPOINT)  
55° 57' 05" N / 23° 28' 17" E

VN 33 P2  
55° 57' 03" N / 23° 28' 07" E



**TOP SECRET RUFF**

25X1

6042:45



**Page Denied**

~~TOP SECRET RUFF~~

# STAROKONSTANTINOV

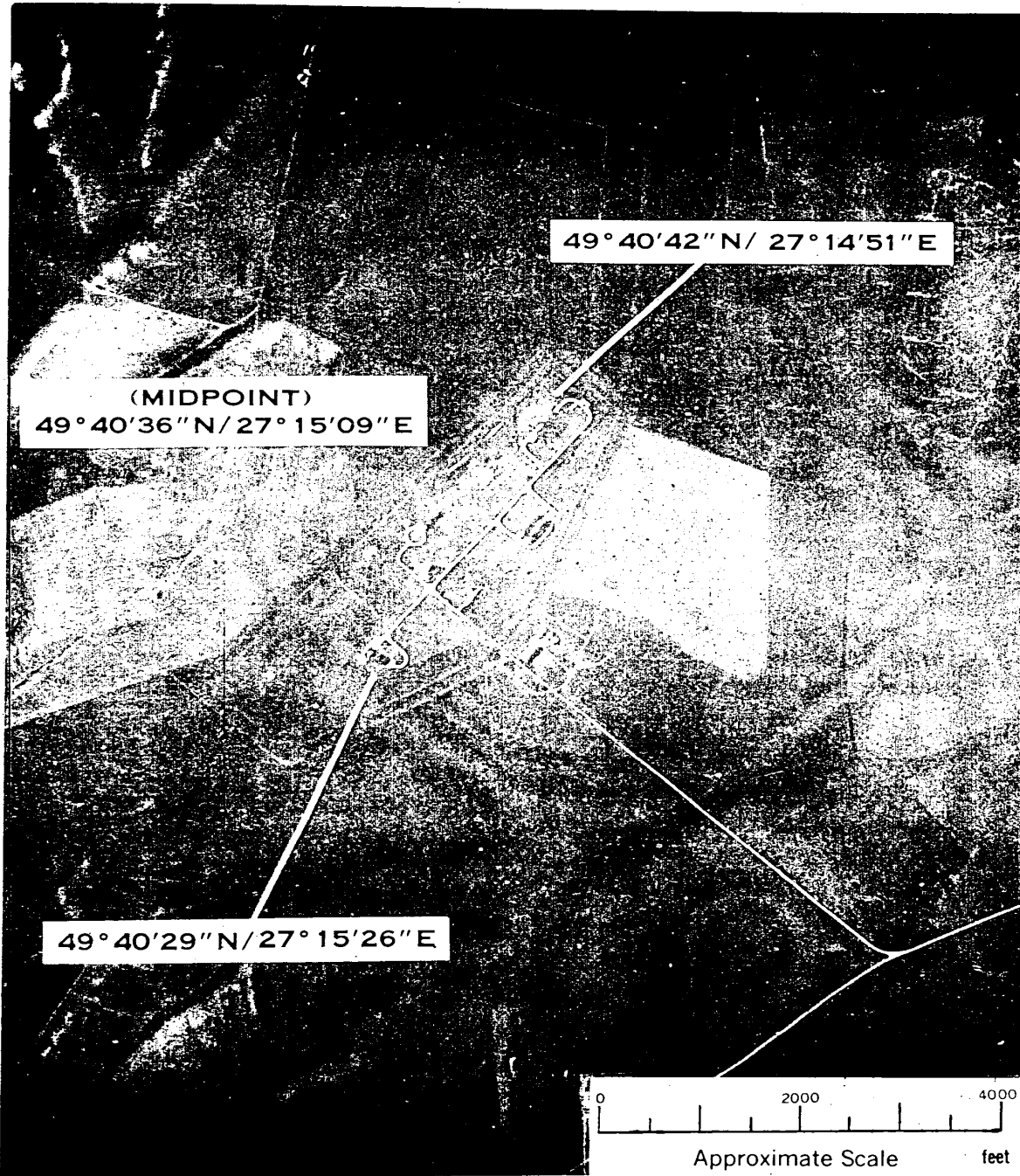
25X1

25X1

VN 48 P9



90% ASSURANCE 400 FT. ON DOD WGS 60  
ELEV. 1070 FT. ± 20 FT.



~~TOP SECRET RUFF~~

6042-47



25X1

**Page Denied**

**TOP SECRET RUFF**

**SUROVATIKHA**

25X1

25X1 VN 48 P9

[Redacted]  
90% ASSURANCE 850 FT. ON DOD WGS 60  
ELEV. 450 FT. ± 130 FT.



**TOP SECRET RUFF**



25X1

6042-49

**Page Denied**

**TOP SECRET RUFF**

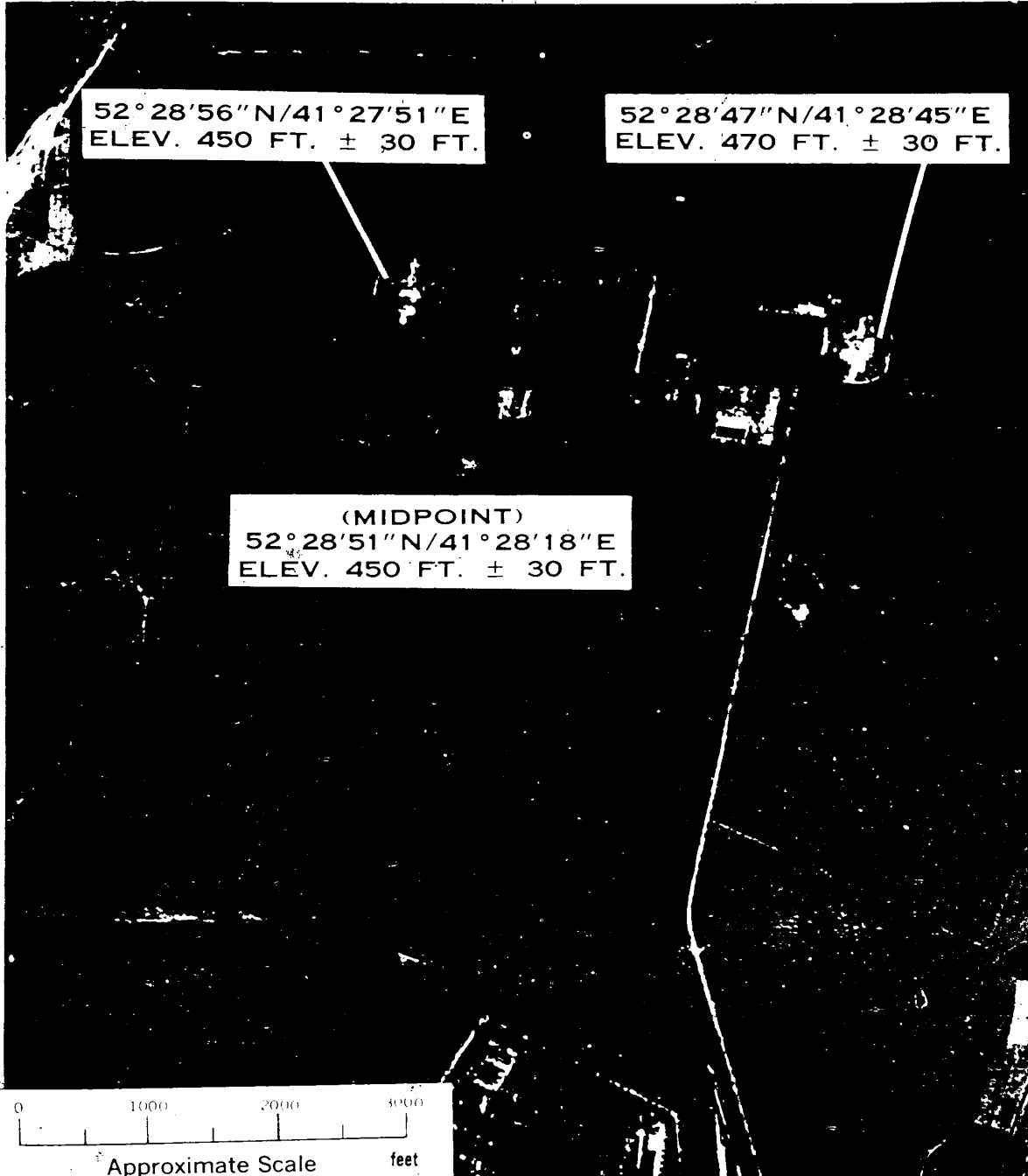
**TAMBOV**

**VN 48 P9**



25X1

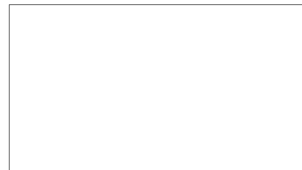
**90% ASSURANCE 300 FT. ON DOD WGS 60**



**TOP SECRET RUFF**

25X1

6042-51



**Page Denied**

**TOP SECRET RUFF**

**USSURIYSK/VOZDVIZHENKA**

25X1

25X1

**VN 48 P9**



**90% ASSURANCE 600 FT. ON DOD WGS 60  
ELEV. 290 FT. ± 30 FT.**

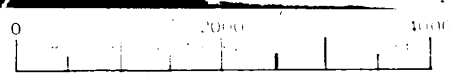


44°00'12"N/131°54'28"E

(MIDPOINT)

44°00'11"N/131°54'44"E

44°00'10"N/131°55'00"E



Approximate Scale feet

**TOP SECRET RUFF**



25X1

6042-53



**Page Denied**

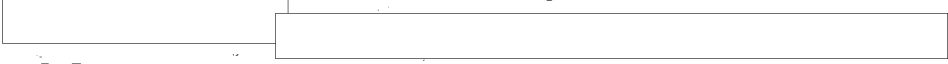
**TOP SECRET RUFF**

# ZAVITINSK

25X1

25X1

VN 48 P9



90% ASSURANCE 2500 FT. ON DOD WGS 60



**TOP SECRET RUFF**



25X1

6042-55

25X5

**Page Denied**

**TOP SECRET RUFF**

25X1

25X1

**ZHITOMIR**

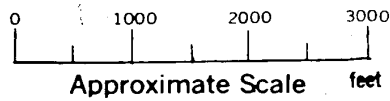
**VN 48 P9**



**90% ASSURANCE 250 FT. ON DOD WGS 60**

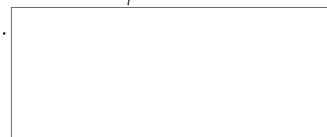
**50°06'41"N / 28°48'32"E  
ELEV. 780 FT. ± 20 FT.**

**(MIDPOINT)  
50°06'27"N / 28°48'22"E  
ELEV. 770 FT. ± 20 FT.**



**50°06'12"N / 28°48'12"E  
ELEV. 790 FT. ± 20 FT.**

**TOP SECRET RUFF**



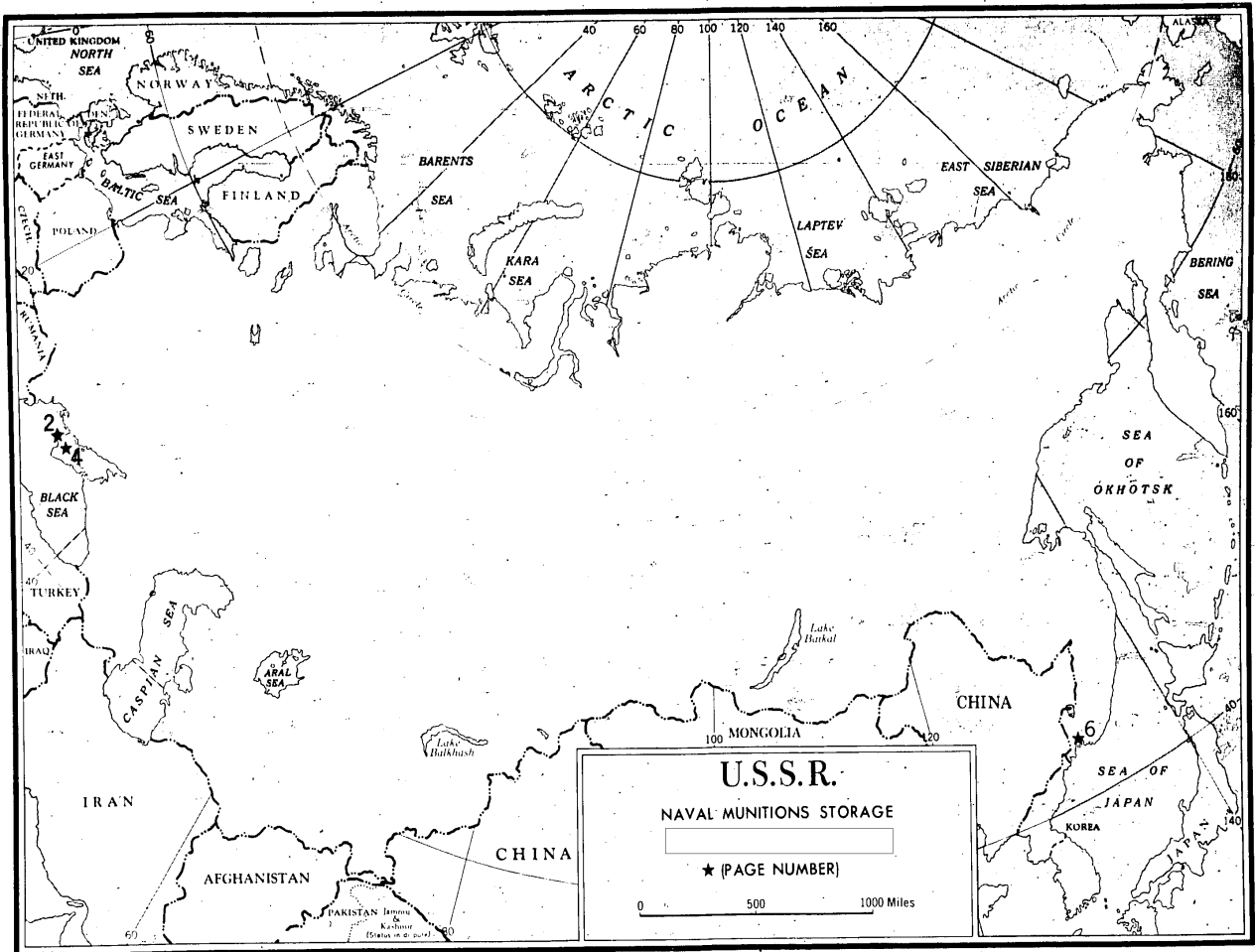
25X1

6042-57

SECTION 3

TOP SECRET RUFF

9720-1



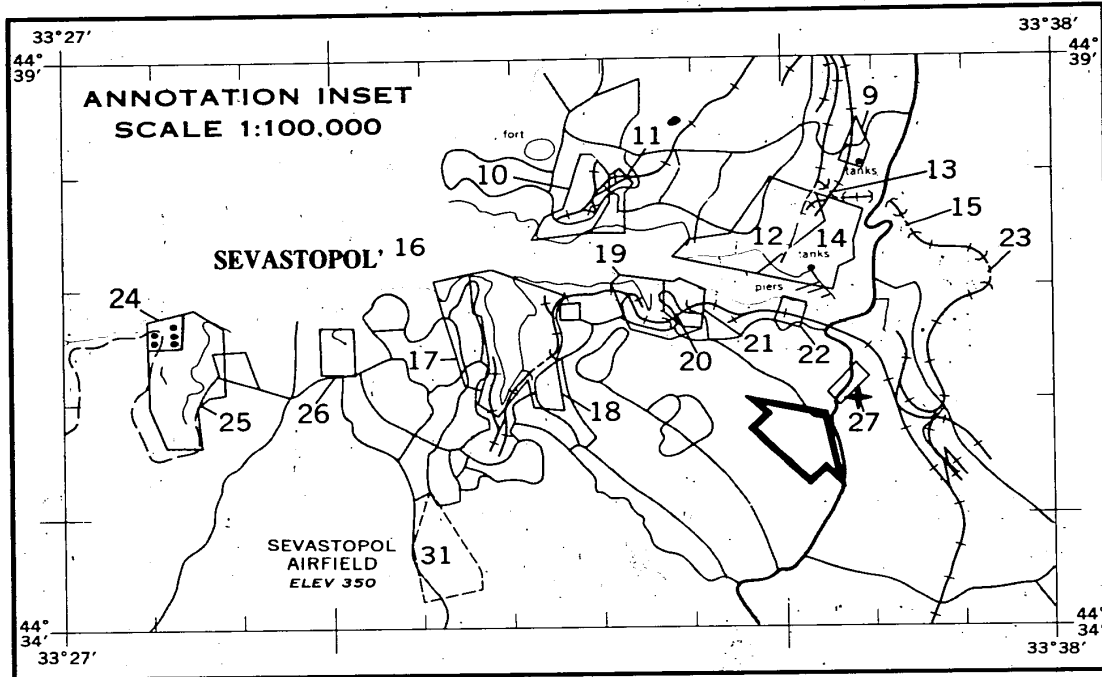
TOP SECRET RUFF

25X1

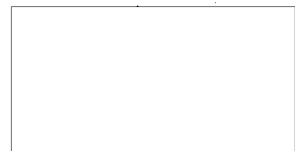
25X1

**TOP SECRET RUFF**

**SEVASTOPOL**



**TOP SECRET RUFF**



25X1

9720-2

**TOP SECRET RUFF**

# SEVASTOPOL

25X1

25X1

90% ASSURANCE 500 FT. ON DOD WGS 60

\*VN 40P0



**TOP SECRET RUFF**

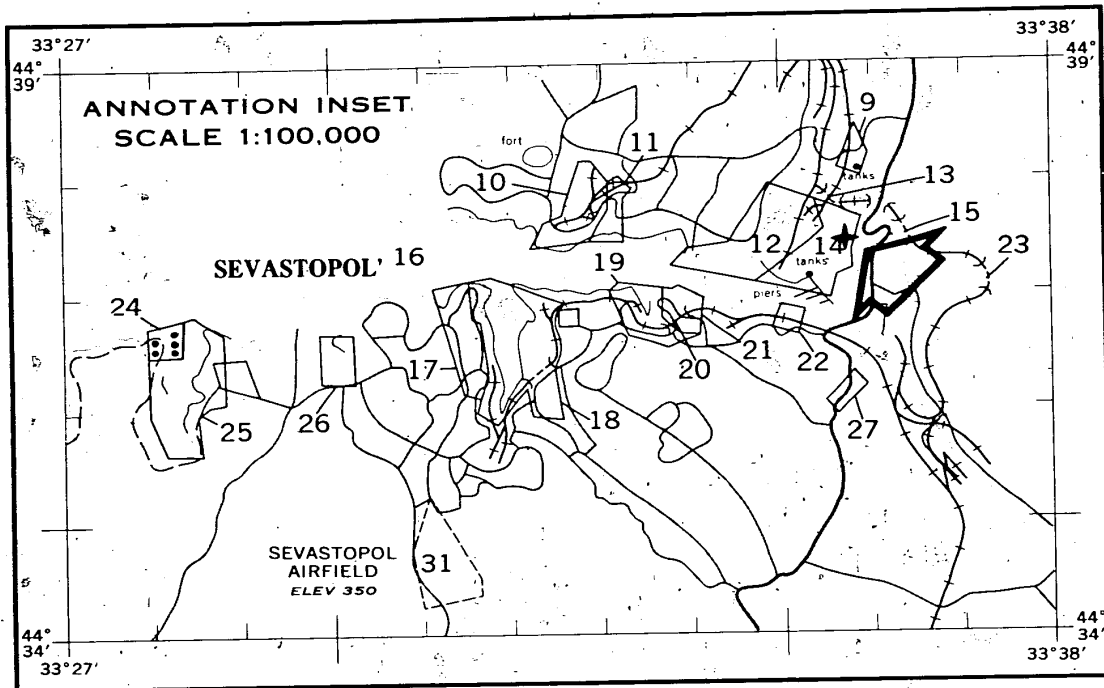
9720-3

25X1



**TOP SECRET RUFF**

# SEVASTOPOL



**TOP SECRET RUFF**

9720-4

25X1

**TOP SECRET RUFF**

**SEVASTOPOL**

25X1

25X1

90% ASSURANCE 500 FT. ON DOD WGS 60

VN 48P0



**TOP SECRET RUFF**

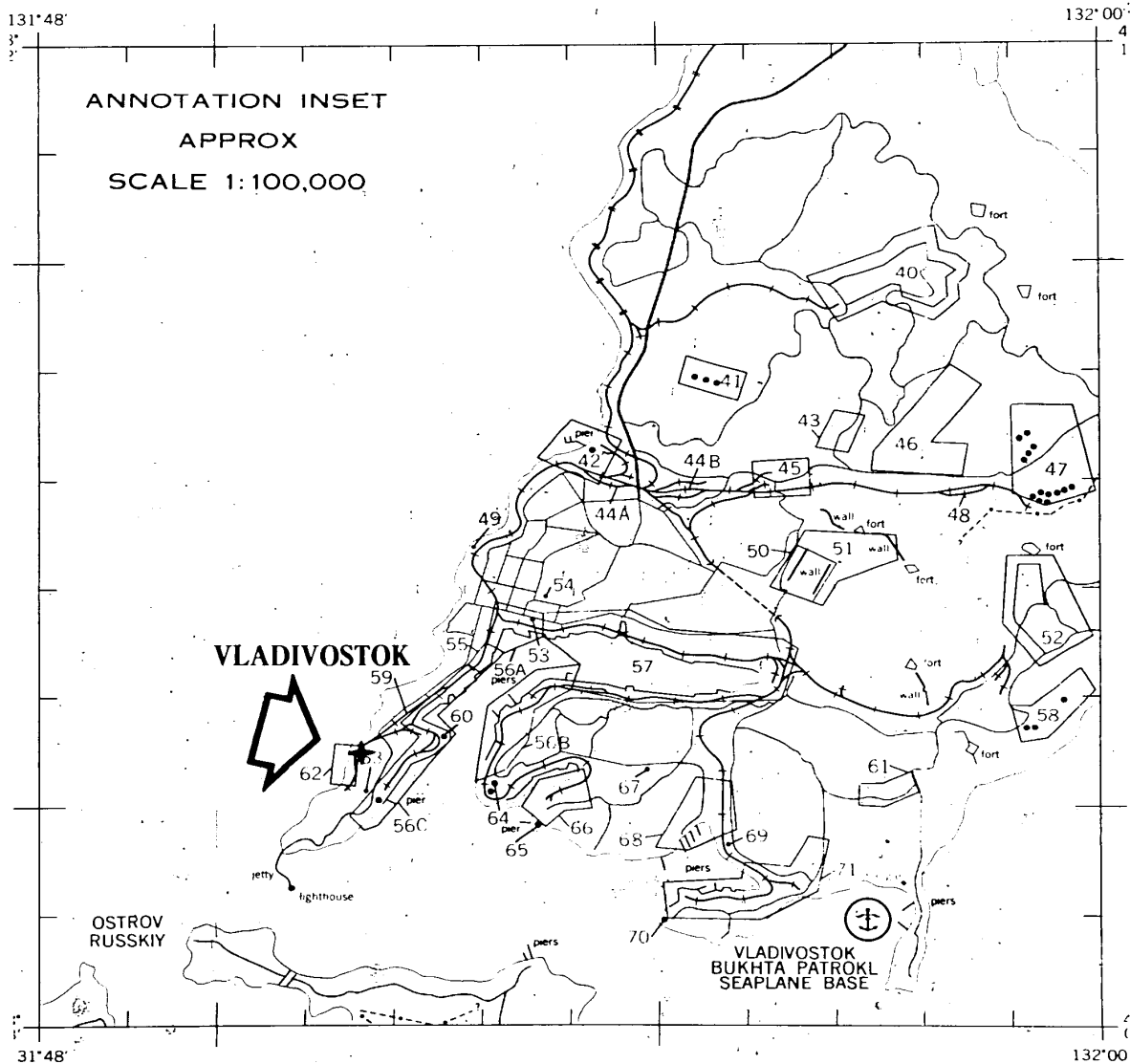
9720-5

25X1

25X1

**TOP SECRET RUFF**

# VLADIVOSTOK



**TOP SECRET RUFF**

9720-6

25X1

**TOP SECRET RUFF**

# VLADIVOSTOK

25X1

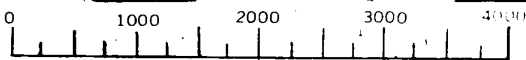
25X1



**90% ASSURANCE 700 FT. ON DOD WGS 60**

\* VN 48P0

- (1) 43°05'42"N/131°51'35"E  
ELEV. 75 FT. ± 30 FT.
- (2) 43°05'35"N/131°51'28"E  
ELEV. 80 FT. ± 30 FT.
- (3) 43°05'30"N/131°51'26"E  
ELEV. 50 FT. ± 30 FT.
- (4) 43°05'27"N/131°51'28"E  
ELEV. 45 FT. ± 30 FT.
- (5) 43°05'28"N/131°51'51"E  
ELEV. 55 FT. ± 30 FT.
- (6) 43°05'25"N/131°51'49"E  
ELEV. 50 FT. ± 30 FT.



Approximate Scale feet

(MIDPOINT)  
 43°05'32"N/131°51'39"E  
 ELEV. 150 FT. ± 30 FT.



**TOP SECRET RUFF**



9720-7

25X1

25X1

**Page Denied**

Next 5 Page(s) In Document Denied