

TOP SECRET

25X1



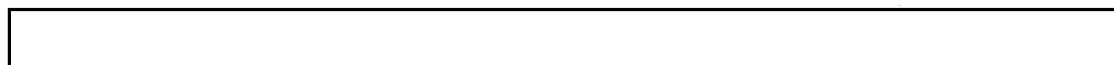
9 February 1961

25X1



Copy No. C-9

CENTRAL INTELLIGENCE BULLETIN



25X1

DIA has no objection to declassification and release.

DIA review(s)
completed.

TOP SECRET

25X1

Approved For Release 2003/04/17 : CIA-RDP79T00975A005500330001-4

Approved For Release 2003/04/17 : CIA-RDP79T00975A005500330001-4

9 February 1961

CENTRAL INTELLIGENCE BULLETIN

CONTENTS

1. Laos: Vientiane troops east of Phou Khoun are meeting strong resistance from Pathet Lao forces. (*Page i*)
2. Burma: Most of the Chinese Nationalist irregulars still in Burma may be forced into Thailand. (*Page i*)
3. Congo: Mobutu moves troops in preparation for offensive against Gizenga. (*Page i*)



25X1

5. Nepal: Exiled Nepalese politicians in India are completing plans for resistance movement in Nepal. (*Page ii*)
6. Watch Committee conclusions. (*Page iii*)



25X1

CENTRAL INTELLIGENCE BULLETIN

9 February 1961

DAILY BRIEF

Laos: Government troops probing several miles eastward along Route 7 from recently occupied Phou Khoun junction are reported meeting strong resistance from Kong Le - Pathet Lao forces. Airdrop operations have been noted recently at various points east of Phou Khoun.]

[Soviet transports have been landing daily at the Plaine des Jarres airfield regardless of heavy cloud cover, suggesting the possibility that these landings are being aided by a radio homing beacon located at the airfield.]

Burma: [The only significant force of Chinese Nationalist irregulars still in Burma--possibly 3,000 to 4,000 troops--was reportedly under attack from Burmese troops as of early February. The irregulars will probably have to retreat into Thailand. This group is 50 miles south of the fortified area from which 2,000 to 3,000 irregulars were recently driven into Laos.]

*Congo: [Mobutu is apparently moving troops toward the northwestern and southwestern borders of Orientale Province in the first stage of a long-planned offensive against the Gizenga regime. There is insufficient evidence available to permit an accurate assessment of the outcome of this operation. The military moves, which seem designed to coincide with new efforts by Kasavubu and his followers to form a provisional government in Leopoldville, will be hampered by the general unreliability of the Congolese troops and by logistical difficulties. However, Gizenga's ability to meet an invasion has been weakened by Mobutu's blockade of Congo]

25X1

River traffic which has caused a critical shortage of gasoline in Orientale Province. Page 3) (Map)

25X1

25X1

Nepal-India: Ousted leaders of the Nepali Congress party, who have been conferring in India since King Mahendra's take-over of the government on 15 December, are completing plans for a "peaceful" resistance movement in Nepal. Their campaign will take the form of mass agitation and strikes to be staged in the near future. Nepali Communists are also planning resistance activities, but their attempts to form a united front have been rebuffed by the Congress leaders.

OK

In Katmandu, increasing signs of opposition have led the King to make further arrests and shut down two newspapers; government operations remain largely at a standstill owing to uncertainty and to the ineffectiveness of the King's new Council of Ministers.

9 Feb 61

DAILY BRIEF

ii

WATCH COMMITTEE CONCLUSIONS

- A. [No Sino-Soviet bloc country intends to initiate hostilities against the United States or its possessions in the immediate future.]
- B. [No Sino-Soviet bloc country intends deliberately to initiate direct military action against US forces abroad, US allies, or areas peripheral to the bloc in the immediate future.]
- C. [The capabilities of Communist forces in Laos for sustained military operations continue to be increased by the bloc airlift and by road improvements which permit truck support of the Plaine des Jarres area from North Vietnam during the dry season. There are no indications that the Communists intend to launch a major offensive in Laos at this time, but they possess the capability for such action and hence could exploit any favorable opportunity with surprise. The bloc is seeking both to legitimize its operation and to play for time by promoting the establishment of the Souvanna Phouma "cabinet" in Xieng Khouang and by opposing a reactivation of the International Control Commission without a prior international conference.]
- D. [Gizenga's Stanleyville regime appears to have lost momentum, partly as the result of his failure to receive supplies and because of withdrawals of pro-Stanleyville UAR troops from Equateur Province. Gizenga's African and bloc supporters are likely to increase their efforts to furnish material aid through the Sudan, which continues to deny transit rights, particularly if the proposed military movements of the Mobutu forces against Stanleyville meet with success.]
- NO

9 Feb 61

DAILY BRIEF

iii

Situation in Laos

25X1

25X1 [] assessing the capabilities and intentions of the Kong Le - Pathet Lao forces in the Plaine des Jarres area, conclude, on the basis of present indications, that the enemy will fight a delaying action along Route 7 preparatory to making a major stand either at Muong Soui or on the Plaine des Jarres itself.

25X1 [] the force now in contact with government troops just east of the Phou Khoun junction of Routes 13 and 7 consists of about two battalions, supported by a battery of 105-mm. howitzers, a few 120-mm. mortars, and two to four armored cars. This force could be reinforced by an estimated four battalions (1,200 to 1,500 men) for a sudden counterattack on the government forces; however, it is considered more likely that the bulk of this reserve will be used in the defense of Muong Soui or the Plaine des Jarres. A potent factor in any delaying action would be the use of antitank mines, which the enemy has recently introduced into the fighting.]

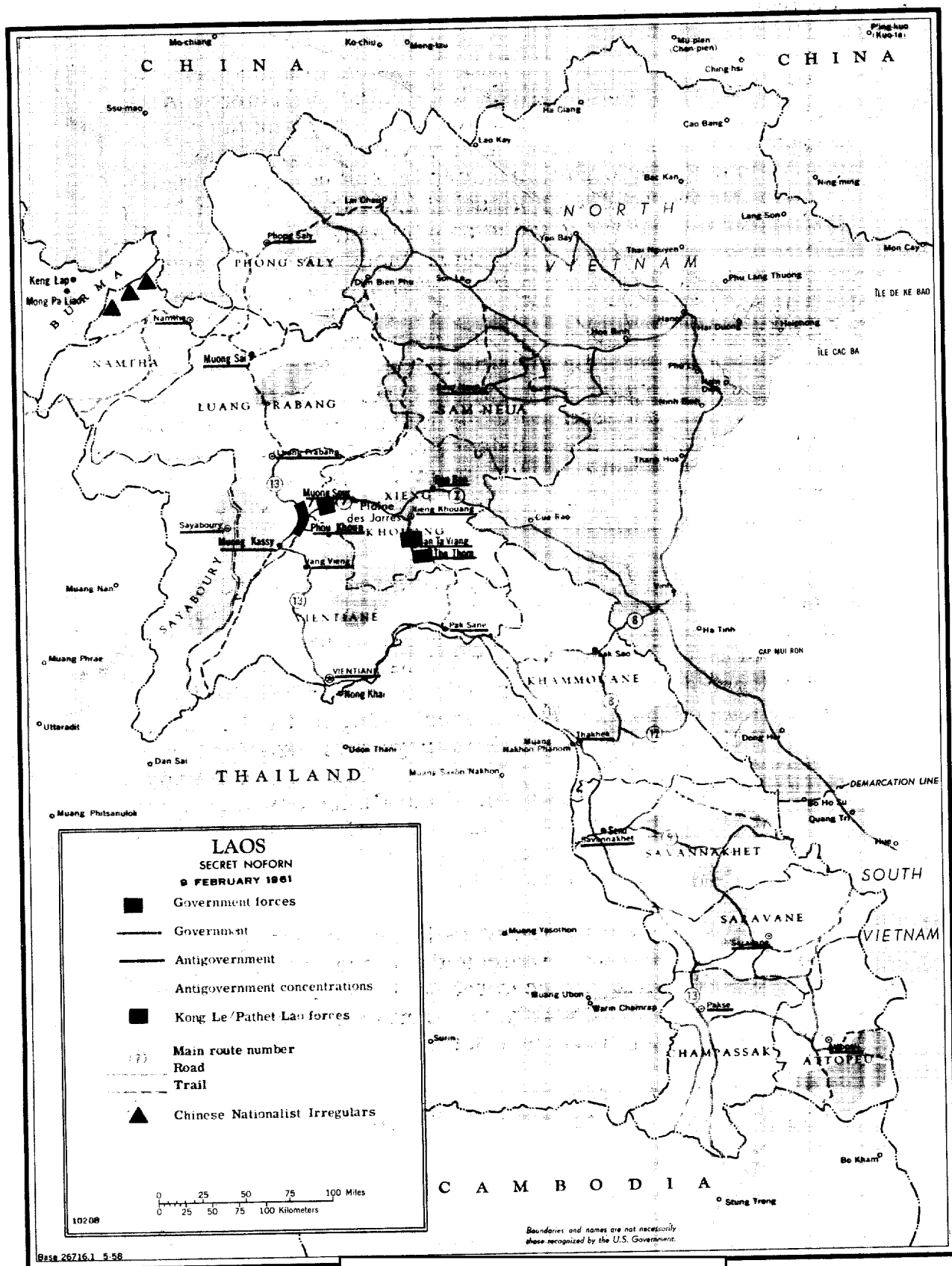
[The assessment notes reports of intensive recruitment activity on the part of the Kong Le - Pathet Lao combine, both for new troops and work gangs to be used in road improvement and construction of defensive positions. The Pathet Lao are considered poorly trained, with North Vietnamese advisers in most cases providing tactical guidance down to the company level. With regard to logistics, it is estimated that a minimum of 40 tons of supplies are being landed daily by Soviet aircraft at the Plaine des Jarres airfield complex. This tonnage is apparently being augmented by an undetermined amount of supplies being moved in by truck via Route 7 from North Vietnam.]

[Despite the defensive tactics being pursued by the enemy in Xieng Khouang Province at the present time, the Kong Le - Pathet Lao forces retain the over-all initiative in Laos through their ability to mount guerrilla attacks on widely scattered government posts.]

[South Vietnam reportedly plans shortly to send a special army team to Laos, to be attached to Phoumi's staff. []

25X1

25X1



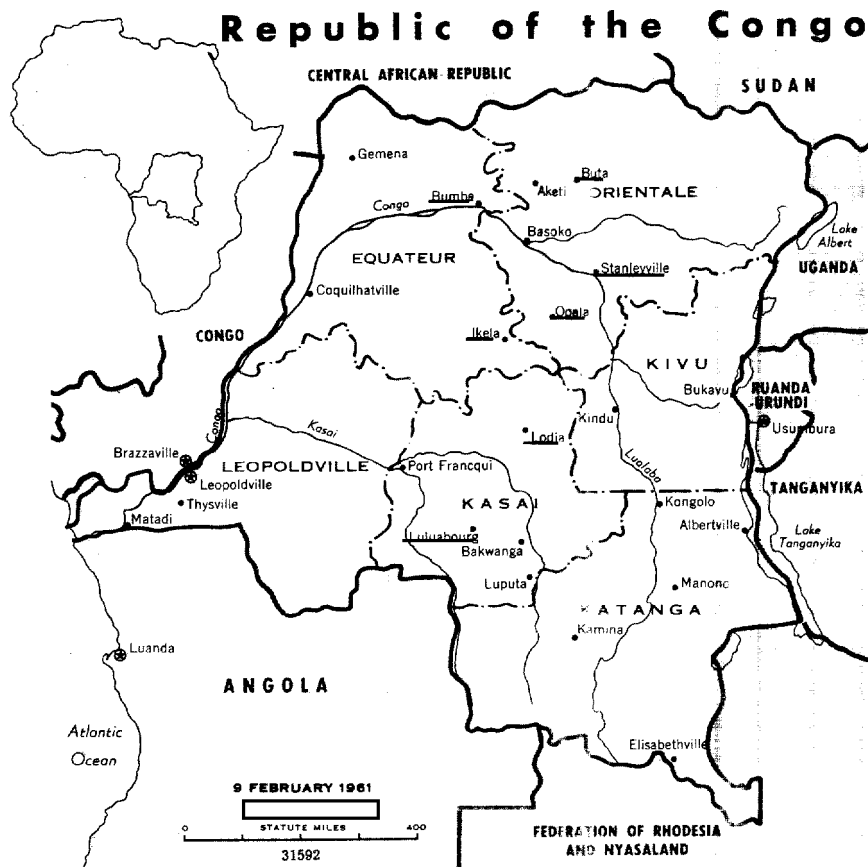
25X1

[redacted] the South Vietnamese military attache had been asked by the Boun Oum government about the possibility of providing psychological warfare and intelligence advisers for a newly established intelligence organization. Phoumi and Boun Oum were in frequent contact with South Vietnamese leaders last fall during the period of their opposition to the Souvanna government. Although Saigon promised them full support, it is not known to have provided significant assistance, either in terms of materiel or personnel, up to this time. [redacted]

[redacted]

25X1

25X1



25X1

25X1

Situation in the Congo

25X1

[Mobutu's troops in northeastern Equateur Province reportedly will approach battalion strength in a week, after the reinforcements and trucks now being moved up the Congo River by barge reach Bumba. Mobutu apparently plans to move this force up a tributary of the Congo to Buta and thence southward by truck toward Stanleyville. At the same time he reportedly is concentrating other troops in Luluabourg, preparatory to a move overland through Lodja, Ikela, and Opala.]

25X6

In addition, the offensive will suffer from severe logistical handicaps. The southern group in particular faces difficult supply problems, since it will have to rely on secondary roads, often passing through hostile territory, for all support once it leaves Luluabourg.]

[Congoese officials in Leopoldville appear to be underestimating the difficulties facing their forces. They apparently are under the impression that Gizenga's regime has been sufficiently weakened to permit conquest of the eastern Congo. Ammunition and gasoline are in critically short supply among the Stanleyville forces as a result of Mobutu's blockade of Congo River shipping. In addition, [redacted] parts of the Congoese Army in Orientale and Kivu provinces are disaffected and have offered to come over to Mobutu's side.]

25X1

[redacted] At Kasavubu's request, representatives of various groups reportedly are attempting to form a provisional government and to have it approved by the members of parliament--representing all regions of the Congo--who have remained in Leopoldville since the legislature was closed by Mobutu in]

25X1

25X1

25X1

September. There apparently is widespread agreement that all important Congolese factions should be represented; however, it is still questionable whether Lumumba supporters will agree to serve with Katanga representatives or that Kasavubu can reconcile himself to the inclusion of some Lumumba adherents.

25X1

25X1

Next 1 Page(s) In Document Exempt

Ousted Nepali Politicians Organize Resistance
Movement Against King Mahendra

Exiled leaders of the Nepali Congress party met in the northern Indian city of Patna on 27 and 28 January to plan a detailed program of resistance activity in Nepal against King Mahendra's direct rule. The King, acting primarily out of fear for his personal power, in December dismissed the Congress party government of Prime Minister Koirala, dissolved Parliament, suspended constitutional rights, and banned all political activity. Koirala and 138 other politicians remain under arrest in Katmandu. Deputy Prime Minister Subarna Shumshere, who has been in India since the day before the King's take-over, has spurned royal overtures and undertaken to lead an active opposition campaign aimed at restoring parliamentary government.

25X1

The gathering in Patna was attended by three former ministers and as many as 29 of the 101 members of the dissolved parliament. [The Congress party leaders decided against any resort to armed insurrection until all possible means of political pressure on the King to reverse his action have failed. They also agreed not to cooperate with the Nepali Communist party to overthrow the monarchy except as a last resort. The Communists have been urging violent resistance in selected areas of Nepal; having failed to persuade other groups to work with them, they reportedly now are concentrating on organizing bases, particularly in areas along the Tibetan border, from which some future revolutionary action could be launched.]

25X1

Relations between Katmandu and New Delhi have been strained since Mahendra's move in December. Nehru, [surprised and highly annoyed by the King's action] immediately expressed his "regret" over the "complete reversal of democracy" following Nepal's successful national elections in 1959. The Katmandu press reacted violently against Nehru's "interference," and Indian officials have since been guarded in their

25X1

25X1

25X1

[REDACTED] comments on Nepal. [REDACTED]

[REDACTED] New Delhi ap-

parently has concluded that it cannot afford any action which runs the risk of prompting Mahendra to seek closer relations with Peiping. [REDACTED]

25X1

25X1

25X1

THE PRESIDENT

The Vice President

Executive Offices of the White House

Special Assistant for National Security Affairs

Scientific Adviser to the President

Director of the Budget

Director, Office of Civil and Defense Mobilization

Director, National Aeronautics and Space Administration

Chairman, Board of Consultants on Foreign Intelligence Activities

Executive Secretary, National Security Council

The Department of State

The Secretary of State

The Under Secretary of State

Director, International Cooperation Administration

The Deputy Under Secretary of State for Political Affairs

The Deputy Under Secretary of State for Administration

The Counselor

The Assistant Secretary of State for Policy Planning

The Director of Intelligence and Research

The Treasury Department

The Secretary of the Treasury

The Department of Defense

The Secretary of Defense

The Deputy Secretary of Defense

The Secretary of the Army

The Secretary of the Navy

The Secretary of the Air Force

The Chairman, The Joint Chiefs of Staff

Chief of Naval Operations, United States Navy

Chief of Staff, United States Air Force

Chief of Staff, United States Army

Commandant, United States Marine Corps

Supreme Allied Commander, Europe

Commander in Chief, Pacific

Assistant Secretary of Defense (International Security Affairs)

Assistant to Secretary of Defense (Special Operations)

The Director, The Joint Staff

Director for Intelligence, The Joint Staff

Assistant Chief of Staff for Intelligence, Department of Army

Director of Naval Intelligence, Department of Navy

Assistant Chief of Staff, Intelligence, Department of the Air Force

The Department of Justice

The Attorney General

The Federal Bureau of Investigation

The Director

The Atomic Energy Commission

The Chairman

The National Security Agency

The Director

The National Indications Center

The Director

TOP SECRET

TOP SECRET