

50X1-HUM

CLASSIFICATION CONFIDENTIAL  
 CENTRAL INTELLIGENCE AGENCY  
 INFORMATION FROM  
 FOREIGN DOCUMENTS OR RADIO BROADCASTS

REPORT   
 CD NO.

COUNTRY USSR  
 SUBJECT Economic - Agriculture, crops, mechanization, techniques, ministers, specialists  
 HOW PUBLISHED Daily newspapers, monthly periodical  
 WHERE PUBLISHED USSR  
 DATE PUBLISHED 1-31 Oct 1953  
 LANGUAGE Russian

DATE OF INFORMATION 1940-1953  
 DATE DIST. 22 Apr 1954  
 NO. OF PAGES 37  
 SUPPLEMENT TO REPORT NO.

THIS DOCUMENT CONTAINS INFORMATION AFFECTING THE NATIONAL DEFENSE OF THE UNITED STATES. WITHIN THE MEANING OF TITLE 18, SECTIONS 793 AND 794, OF THE U.S. CODE, AS AMENDED. ITS TRANSMISSION OR REVELATION OF ITS CONTENTS TO OR RECEIPT BY AN UNAUTHORIZED PERSON IS PROHIBITED BY LAW. THE REPRODUCTION OF THIS FORM IS PROHIBITED.

THIS IS UNEVALUATED INFORMATION

SOURCE As indicated

SURVEY OF USSR AGRICULTURAL DATA, OCTOBER 1953

[Comment: This report presents information, from October 1953 Soviet newspapers and a periodical, on agriculture in the USSR and in the 16 union republics. Progress and statistical data are given on the following: sown area, crops, mechanization, and agricultural practices. The report also includes a list of agricultural ministers identified during the month, data on the agricultural-specialist "back-to-the-farm" program, and some general information on agricultural labor.

Numbers in parentheses refer to appended sources.]

USCR

The following table shows the agricultural ministers identified in October 1953 newspapers:

<u>USSR and Republics</u>	<u>Agriculture and Procurement</u>	<u>State Farms</u>
USSR	Benediktov, I. A. (1)	
Karelo-Finnish SSR	Anatol'yev, I. A. (2)	
Estonian SSR	Mette, A. A. (3)	
Latvian SSR	Nikonov, A. A.	Vatsiyetis, E. (8)
Lithuanian SSR	Augustinaytis, V.I. (4)	
Belorussian SSR	Kostyuk, S.S. (3)	Kalinin, P. Z. (9)
Ukrainian SSR	Kal'chenko, N.T.	Koval', A.G. (10)
Moldavian SSR	Koval', F.S. (5)	
Georgian SSR	Georgadze, M.P. (6)	Alavidze, G.A. (6)
Armenian SSR	Kazaryan, S. Kh. (3)	
Azerbaijdzhan SSR	Abdullayev, I.K. (7)	
Kazakh SSR	Karibzhanov, F. (4)	
Uzbek SSR	Mukhamedzhanov, M.A.	Dzhalilov (fnu) (11)
Turkmen SSR	Aliyev, K.E.	
Tadzhik SSR	Abdullayev, A.A.	
Kirgiz SSR	Iskakov, T. (3)	

50X1-HUM

CLASSIFICATION CONFIDENTIAL

STATE	NAVY	NSRB	DISTRIBUTION			
ARMY	AIR	FBI				

CONFIDENTIAL

50X1-HUM

Since 1940, the area devoted to wheat in the USSR increased 8.1 million hectares.(12)

In 1952, the irrigated area devoted to cotton in the USSR was 317,000 hectares greater than in 1940. In 1952, the cotton yield in the irrigated regions was 6 quintals per hectare greater than before the war. In 1952, the cotton harvest was 70 percent greater than in the last year before the war.(13)

During the postwar years, kolkhozes, sovkhoses, and MTS of the USSR received more than 9.5 million agricultural machines and pieces of equipment, including several hundred thousand tractors, more than 200,000 grain combines, and many trucks.(14)

As of 1 October 1953, MTS of the USSR had 969,000 tractors in terms of 15-horsepower units, or 74 percent more than before the war.(15)

Karelo-Finnish SSR

The following table shows percentage fulfillment of 1953 plans for harvesting of fodder and grain crops, potatoes, vegetables, plowing of winter fallow, and delivery of products to the state:

<u>Enterprises</u>	<u>Coarse Fodder Procured</u>	<u>Ensilage Stored</u>	<u>Grain, Legume Crops Harvested</u>	<u>Pota- toes Dug</u>	<u>Vege- table Harvested</u>	<u>Winter Fallow Plowed</u>	<u>Delivered to State</u>		
							<u>Grain</u>	<u>Pota- toes</u>	<u>Vege- table</u>
<u>1 Oct (16)</u>									
Kolkhozes	40	67	92	56	--	25	69	21	56
Sovkhoses	57	73	95	63	--	28	--	--	--
<u>5 Oct (17)</u>									
Kolkhozes	--	--	96	71	--	31	80	26	65
Sovkhoses	57	74	98	--	--	33	--	--	--
<u>10 Oct (18)</u>									
Kolkhozes	--	--	--	87	82	35	91	29	70
Sovkhoses	57	74	--	91	73	39	--	--	--
<u>15 Oct (19)</u>									
Kolkhozes	--	--	--	94	92	39	99	32	80
Sovkhoses	57	74	--	--	--	42	--	--	--
<u>20 Oct (20)</u>									
Kolkhozes	--	--	--	--	--	43	101	36	84
Sovkhoses	--	--	--	--	--	46	--	--	--
<u>25 Oct (21)</u>									
Kolkhozes	--	--	--	--	--	48	102	36	86
Sovkhoses	--	--	--	--	--	49	--	--	--

- 2 -

CONFIDENTIAL

CONFIDENTIAL

50X1-HUM

Estonian SSR

According to the plan, about 300 hectares of new orchards were to be planted in the republic during the fall of 1953.(22)

Latvian SSR

Sovkhozos of the republic had completed digging of potatoes by 28 October. Highly productive tractor-drawn potato diggers were used for the first time. Because a greater portion of the crop was harvested mechanically, the potato harvest was completed 3 weeks earlier than in 1952.(23)

In October, the Latvian Institute for Planning of Agricultural Construction was engaged in working out general plans for construction of MTS in the republic. By the end of 1953, such plans were to have been prepared for all MTS in Latvia. According to the new plans, the area of an MTS site is to cover 30-40 hectares and is to include a repair shop for tractors and other agricultural machinery, sheds, a garage, a spare-parts depot, a fuel base, and a local electric power station. In addition, every MTS is to have at least 12 eight-apartment or four-apartment dwellings, a club, and a nursery building.

Plans will have been completed and construction of MTS will begin during the fall of 1953.(24)

By 9 October, the Ministry of Agriculture and Procurement Latvian SSR had received 256 applications from specialists and workers in industrial enterprises of Riga for return to the country; by this date, 166 persons had already departed for various MTS of the republic, including 30 mechanics, 3 repair-shop chiefs, 28 turners, 29 locksmiths, and 10 drivers. Fifteen agronomists and four zootechnicians who had been working in various departments and institutions in Riga were also sent back to MTS. From the apparatus of the ministry, 15 specialists with higher educations were sent out, including 6 agronomists, 4 engineers, and 5 zootechnicians. In the immediate future, 12 more specialists of the ministry apparatus will be named for return to the country.(22)

Lithuanian SSR

Many kolkhozos and sovkhosozes of the republic grew a good potato crop in 1953. However, as of 1 October, digging of potatoes was proceeding very slowly in the republic as a whole. Many kolkhozos had not even begun the potato harvest as of this date.(25)

Belorussian SSR

On 15 October, kolkhozos, sovkhosozes, and kolkhoz workers of Bobruyskaya Oblast had fulfilled the plan for delivery of grain to the state 100.1 percent, including wheat, 163.3 percent; buckwheat, 119.8 percent; and flax seed, 154.3 percent.

On 10 October, Gomel'skaya Oblast had fulfilled the state plan for procurement and purchase of vegetables 102.1 percent.(26)

By 17 October, kolkhozos, sovkhosozes, and kolkhoz workers of Minskaya Oblast had fulfilled the 1953 state plan for grain procurement, not including the "gantsevyy sbor" (grain given to mills in payment for grinding grain into flour) 100.3 percent. The plan for wheat procurement had been fulfilled 170 percent as of this date.(27)

- 3 -

CONFIDENTIAL

50X1-HUM

CONFIDENTIAL

Polesskaya Oblast had fulfilled the 1953 plan for delivery of grain to the state by 20 October.(28)

In 1953, the area devoted to perennial and annual seed grasses in the republic was 15,000 hectares greater than in 1952. By 9 October, kolkhozes of the republic had accumulated almost three times as much clover, timothy, vetch, alfalfa, and other grass-seed supplies as was accumulated by the same date in 1952.(22)

- 4 -

CONFIDENTIAL

The following table shows percentage fulfillment of 1953 plans for harvesting grain crops, fiber flax, perennial grass seed, potatoes, and fodder crops in kolkhozes of the republic:

Oblasts	Grain and Legume Crops		Lupine and Serradella		Flax		Perennial Seed	Grasses	Pota- toes	Fodder Root Crops	Ensilage Crops	
	Reaped	Threshed	Reaped	Threshed	Threshed	Spread Taken Out Up						Howed
<u>30 Sep (29)</u>												
Baranovichskaya	98	59	80	7	96	93	34	76	29	24	5	91
Bobruyskaya	99	71	89	70	99	98	57	83	70	38	10	86
Brestskaya	99	73	94	14	98	96	19	80	23	38	10	86
Gomel'skaya	98	90	70	94	96	91	37	84	75	36	9	86
Grodnenskaya	99	58	85	6	98	97	26	80	6	28	17	100
Minskaya	100	78	91	69	89	87	32	87	63	43	17	96
Mogilevskaya	98	85	78	92	92	83	28	56	70	21	11	85
Molodechnenskaya	100	50	99	4	97	93	48	86	16	30	6	95
Pinskaya	99	70	90	25	96	99	60	95	63	53	5	89
Polesskaya	100	75	100	78	99	98	37	72	79	33	8	95
Polotskaya	99	76	69	5	90	86	38	57	45	36	9	65
Vitebskaya	96	82	56	29	91	90	41	50	57	28	12	77
<u>5 Oct (30)</u>												
Baranovichskaya	98	61	82	7	96	94	44	80	30	43	9	92
Bobruyskaya	99	73	92	70	99	100	64	88	72	51	16	89
Brestskaya	99	74	93	16	98	97	27	89	23	55	13	92
Gomel'skaya	99	91	74	95	98	95	46	89	78	50	15	88
Grodnenskaya	99	61	87	8	99	99	38	81	7	43	22	100
Minskaya	100	80	92	70	93	91	42	92	65	61	25	96
Mogilevskaya	99	88	81	92	96	91	36	70	74	37	26	87
Molodechnenskaya	100	52	99	6	98	95	57	92	16	47	15	98
Pinskaya	100	72	92	26	99	99	66	95	64	68	11	90
Polesskaya	100	77	100	79	99	98	41	79	73	49	17	89
Polotskaya	99	78	80	4	93	90	47	66	48	54	15	75
Vitebskaya	97	84	72	28	97	95	50	65	65	47	20	75

[Rejoins page 6 here.]

CONFIDENTIAL

CONFIDENTIAL

50X1-HUM

[Adjoins page 5 here.]

CONFIDENTIAL

- 9 -

	10 Oct (31)										
Baranovichskaya	62	84	7	97	94	54	80				
Bobruyskaya	74	94	70	100	100	69	90	31	66	26	92
Brestskaya	77	95	17	100	99	38	96	74	66	26	93
Gomel'skaya	93	75	96	99	97	56	91	25	77	25	99
Grodenskaya	63	85	9	99	100	51	82	82	68	28	91
Minskaya	82	95	69	97	95	47	82	7	63	31	103
Kogilevskaya	90	84	92	98	94	41	94	65	78	36	98
Kolodechnenskaya	56	99	6	98	97	66	81	77	57	40	92
Pinskaya	75	94	27	100	100	77	94	16	72	31	100
Poleskaya	79	100	79	100	99	53	96	64	82	19	90
Polotskaya	81	91	6	96	93	59	85	68	69	26	89
Vitebskaya	86	76	31	98	97	60	75	47	75	31	75
								71	69	33	83
	15 Oct (32)										
Baranovichskaya	64	85	7	97	95	66	80				
Bobruyskaya	75	96	70	100	100	74	95	35	84	39	96
Brestskaya	79	95	19	100	100	51	99	73	80	39	94
Gomel'skaya	94	78	97	99	97	65	96	31	89	40	100
Grodenskaya	65	85	10	100	100	65	82	85	82	36	94
Minskaya	83	95	71	98	96	57	96	8	85	48	99
Kogilevskaya	91	98	90	99	95	47	92	66	91	48	94
Kolodechnenskaya	59	100	7	99	98	75	95	79	79	52	99
Pinskaya	77	100	34	100	100	85	101	16	92	49	94
Poleskaya	80	100	80	100	99	62	91	61	95	31	100
Polotskaya	84	92	6	98	96	69	87	67	84	40	100
Vitebskaya	88	81	37	99	99	69	84	56	91	48	84
								77	85	51	88
	20 Oct (33)										
Baranovichskaya	65.2	84.8	7.7	97.2	94.9	75.1	80.6				
Bobruyskaya	76.8	97.2	71.0	100.0	100.0	82.3	98.7	35.4	96.6	57.7	97.8
Brestskaya	81.0	95.4	23.0	100.0	99.8	60.6	99.3	73.1	91.3	54.6	99.1
Gomel'skaya	94.9	79.2	97.4	99.6	98.7	73.6	98.2	31.8	98.1	58.4	100.0
Grodenskaya	66.9	85.0	11.4	100.0	99.9	71.1	83.3	87.7	94.1	51.4	96.7
Minskaya	83.9	96.4	72.2	99.2	97.8	65.5	97.3	7.9	93.1	67.1	99.6
Kogilevskaya	93.1	97.2	92.1	99.3	96.7	51.8	93.0	68.5	98.1	64.7	99.1
Kolodechnenskaya	62.2	100.0	8.2	100.0	98.7	83.0	96.3	81.8	98.1	66.2	95.1
Pinskaya	79.6	100.0	34.2	100.0	100.0	91.4	103.5	20.0	99.5	74.0	100.0
Poleskaya	81.7	100.0	80.7	100.0	100.0	71.3	91.3	69.8	99.3	55.1	100.0
Polotskaya	86.8	97.3	6.4	98.4	96.9	75.2	92.5	68.8	95.6	60.8	100.0
Vitebskaya	90.3	89.8	40.2	99.7	99.5	78.5	90.5	63.5	97.8	63.4	86.1
								78.5	96.8	71.7	91.0

CONFIDENTIAL

50X1-HUM

CONFIDENTIAL

50X1-HUM

The following table shows percentage fulfillment of 1953 plans for sowing of winter grain crops and plowing of winter fallow and black summer fallow in kolkhoses of the republic:

Oblast	30 Sep (29)			5 Oct (30)				
	Winter Crops Sown	Winter Wheat Sown	Black Summer Fallow Plowed	Winter Crops Sown	Winter Wheat Sown	Black Summer Fallow Plowed	Black Summer Fallow Plowed	
Baranovichskaya	105.5	62.7	37.2	24.5	106.5	64.5	40.8	24.5
Bobruyskaya	98.7	75.2	43.8	28.7	100.1	75.6	46.5	30.8
Brestskaya	101.0	64.2	30.5	18.8	102.5	67.8	33.9	18.9
Gomel'skaya	100.4	71.5	36.9	1.4	100.8	72.6	42.1	1.5
Grodnenskaya	106.3	67.1	26.1	11.6	106.9	69.8	31.1	11.6
Minskaya	101.3	77.8	43.5	16.7	101.6	80.6	46.4	18.3
Mogilevskaya	98.1	50.5	43.1	6.2	99.2	50.8	48.1	7.7
Molodechnenskaya	101.0	60.5	22.0	3.4	102.0	63.5	25.4	3.6
Pinskaya	102.5	51.1	29.7	17.5	104.8	54.0	31.5	17.5
Polesskaya	100.8	43.4	30.1	16.1	102.2	45.0	33.3	16.7
Polotskaya	98.4	90.6	25.8	7.5	100.0	91.3	28.1	7.6
Vitebskaya	99.0	102.9	45.2	2.6	99.4	104.0	47.9	3.6

	Winter Fallow Plowed	Black Summer Fallow Plowed	Winter Fallow Planned 15 Oct (32)	Black Summer Fallow Planned	Winter Fallow Planned 20 Oct (33)	Black Summer Fallow Planned
	Baranovichskaya	50.4	30.6	54.9	31.9	64.7
Bobruyskaya	54.1	26.7	58.6	30.0	67.3	32.9
Brestskaya	42.2	21.2	49.5	22.2	59.0	25.8
Gomel'skaya	51.2	2.6	57.4	3.3	65.4	3.6
Grodnenskaya	37.2	11.9	45.3	14.8	52.2	18.5
Minskaya	59.4	21.9	62.2	27.5	70.7	33.4
Mogilevskaya	55.9	9.1	63.6	12.5	73.5	16.1
Molodechnenskaya	33.0	6.5	40.3	8.7	50.6	12.7
Pinskaya	37.1	20.0	42.9	20.1	49.5	21.7
Polesskaya	41.3	16.7	47.9	6.8	56.2	6.8
Polotskaya	38.3	9.6	43.3	11.1	52.7	11.1
Vitebskaya	58.7	6.0	61.4	6.9	71.2	9.6

- 7 -

CONFIDENTIAL

CONFIDENTIAL

50X1-HUM

Ukrainian SSR

In October, there were 91 MTS and specialized stations in Kiyevskaya Oblast; MTS were performing about 90 percent of the field work in kolkhozes of the oblast.(34)

As of 7 October, the program for sending agricultural specialists from administrative organizations to kolkhozes and MTS was proceeding slowly in the Ukraine. Altogether, 180 persons are to be transferred to the country from the apparatus of the Ministry of Agriculture and Procurement Ukrainian SSR; however, by 7 October, only 15 of 25 specialists who had applied for transfer had actually been sent to MTS and kolkhozes, and work in selecting the others to be transferred had not begun. From the apparatuses of the oblast administrations of agriculture and procurement, 630 specialists are to be transferred to MTS and kolkhozes, but this work was also being carried out very slowly, and, by 7 October, only several score had been sent.(35)

The Khersonskaya Oblast Administration of Agriculture and Procurement had sent to kolkhozes almost all specialists from the apparatuses of its rayon administrations of agriculture and procurement by 13 October. By this date, 12 specialists had gone to the country from the oblast administration and 29 from other organizations. From industrial enterprises, 24 engineers and technicians had been sent to MTS; 360 former agricultural machine operators, who had been working in industrial enterprises of the oblast, returned to MTS.(36)

Kolkhozes and kolkhoz workers of Rovenskaya Oblast had fulfilled the 1953 state plan for procurement and purchase of potatoes 100.5 percent by 15 October; 2.8 times as many potatoes had been delivered to procurement points as by the same date in 1952.

In 1953, the oblast considerably exceeded the plan for planting of potatoes; the area planted was 10,800 hectares greater than in 1952; 5,200 hectares were planted by the check-row method.(37)

The 1953 plan for procurement of perennial grass seed in L'vovskaya Oblast had been fulfilled by 2 October. Delivery of seed in excess of plan was continuing.(38)

Kolkhozes of Volynskaya Oblast had fulfilled the 1953 plan for delivery of hops to the state 100.4 percent by 5 October. Twice as many hops had been delivered as by the same date in 1952. Delivery was continuing.(10)

- 8 -

CONFIDENTIAL



The following table shows percentage fulfillment of 1953 plans for harvesting of maize and sugar beets, sowing of winter grain crops, plowing of winter fallow, procurement of coarse fodder, and storage of ensilage in kolkhozes of the republic:

Oblasts	30 Sep (38)							5 Oct (10)						
	Maize Harvested	Sugar Beets Harvested	Winter Crops Sown	Wheat Sown	Fallow Plowed	Coarse Fodder Procured	Ensilage Stored	Maize Harvested	Sugar Beets Harvested	Winter Crops Sown	Wheat Sown	Fallow Plowed	Coarse Fodder Procured	Ensilage Stored
Chernigovskaya	12.0	26.0	107.8	103.7	46.8	55.9	84.3	16.0	35.6	107.7	103.7	54.9	57.2	86.3
Chernovitskaya	71.6	38.4	90.9	87.9	42.6	97.9	70.5	81.7	47.4	97.3	96.5	45.8	102.7	73.8
Dnepropetrovskaya	40.1	48.0	102.3	102.4	51.6	83.4	90.8	48.8	60.0	102.3	102.4	58.4	85.2	91.8
Drogobychskaya	31.0	53.0	92.6	62.4	18.5	60.5	68.5	37.9	64.9	101.1	75.1	27.3	63.6	74.5
Izmail'skaya	41.0	--	99.0	98.5	53.5	112.8	130.9	49.1	--	99.8	99.5	57.8	121.8	131.2
Kamenets-Podol'skaya	19.6	38.6	101.0	96.8	37.2	76.5	52.9	27.8	45.6	103.1	98.9	47.6	78.9	59.4
Khar'kovskaya	10.2	50.2	103.4	104.1	55.2	71.8	69.4	16.9	61.8	103.4	104.1	62.7	73.1	70.8
Kherson'skaya	39.1	--	87.4	87.4	48.0	100.7	112.3	49.5	--	92.1	91.7	52.5	101.5	112.7
Kiyevskaya	11.1	50.6	99.6	97.1	33.9	85.2	64.8	19.2	62.8	100.8	98.3	41.1	85.9	71.4
Kirovogradskaya	23.2	49.1	100.8	100.5	43.1	88.0	72.4	30.7	67.1	100.9	100.7	51.4	89.4	74.4
L'vovskaya	18.6	59.3	93.3	87.1	21.9	60.5	81.3	23.3	71.6	98.0	97.7	27.5	63.9	85.4
Nikolayevskaya	60.7	51.4	95.6	95.3	59.1	98.9	111.2	69.7	62.9	97.6	97.6	64.2	99.3	111.3
Odesskaya	61.1	33.3	92.6	92.3	55.6	94.2	75.2	68.2	43.3	96.5	95.2	60.9	95.4	77.8
Poltvskaya	6.0	35.9	101.6	100.0	32.9	84.0	58.8	10.9	45.2	101.6	100.0	40.2	85.5	60.1
Rovenskaya	78.6	50.0	105.3	102.0	52.1	100.0	134.6	100.0	59.1	105.3	102.0	60.7	100.4	139.2
Stalinskaya	24.6	--	101.7	102.0	62.6	67.1	74.3	34.6	--	101.7	102.0	68.3	67.8	75.4
Stanislavskaya	47.4	45.6	102.4	98.4	35.6	72.6	73.6	59.5	55.0	103.7	101.1	43.4	77.5	81.1
Sunskaya	6.2	38.6	109.8	105.7	36.9	65.7	98.9	8.2	48.6	109.8	105.7	44.2	67.4	106.2
Ternopol'skaya	48.4	45.5	100.0	90.7	35.3	83.7	81.6	55.6	55.6	100.0	96.0	46.3	90.0	89.9
Vinnitskaya	30.9	44.2	94.9	93.7	29.5	89.6	54.9	41.5	55.3	100.2	99.6	36.2	90.7	63.8
Volynskaya	40.9	62.8	100.8	102.8	34.8	81.1	98.1	45.5	71.7	100.8	102.8	43.1	84.9	101.7
Voroshilovgradskaya	15.6	30.0	105.6	104.1	69.1	49.7	73.1	22.6	43.3	105.6	104.1	75.3	50.6	73.3
Zakarpatskaya	8.8	--	77.9	34.0	36.0	66.7	118.0	13.7	--	88.1	73.1	40.6	71.4	120.8
Zaporozhskaya	48.5	--	102.5	102.2	55.8	91.9	114.5	64.1	--	101.7	101.7	61.1	92.7	115.5
Zhitomirskaya	13.0	36.1	106.0	101.7	46.9	52.4	95.5	16.7	47.9	106.8	102.4	54.5	52.6	98.1
Republic as whole	31.8	43.4	100.2	97.9	45.1	79.0	82.5	39.9	54.3	101.4	99.5	51.9	80.8	85.7

CONFIDENTIAL

CONFIDENTIAL

50X1-HUM

Oblasts	10 Oct (39)					15 Oct (40)				
	Maize	Sugar	Winter	Coarse	Ensilage	Maize	Sugar	Winter	Coarse	Ensilage
	Harvested	Beets Harvested	Fallow Plowed	Fodder Procured		Harvested	Beets Harvested	Fallow Plowed	Fodder Procured	
Chernigovskaya	20.0	47.2	66.0	58.5	89.2	28.0	60.4	74.3	59.2	91.2
Chernovitskaya	88.9	62.6	50.4	104.2	78.5	91.6	72.5	55.4	105.1	82.1
Dnepropetrovskaya	59.3	76.0	66.9	86.1	93.0	69.0	84.0	73.3	88.0	94.1
Drogobyskaya	48.3	73.5	33.1	65.3	81.6	62.1	82.1	42.0	69.3	85.5
Izmail'skaya	56.7	--	65.6	122.1	132.2	62.6	--	70.7	122.6	132.4
Kamenets-Podol'skaya	37.2	54.6	50.6	81.3	67.4	48.4	65.7	59.9	82.3	75.9
Khar'kovskaya	23.4	74.5	73.4	74.0	73.3	32.8	86.3	81.4	74.5	76.2
Kher'son'skaya	60.6	--	58.9	102.4	112.7	68.3	--	64.1	103.0	112.9
Kiyevskaya	28.4	76.9	49.4	87.1	78.1	36.8	87.2	56.5	86.9	82.1
Kirovogradskaya	40.7	77.6	62.5	90.1	77.1	52.9	88.2	71.4	90.6	79.1
L'vovskaya	30.2	80.2	35.5	67.5	88.5	37.2	87.7	43.7	68.4	90.1
Nikolayevskaya	76.3	80.0	71.7	100.6	111.6	83.3	91.4	77.3	100.7	111.9
Odesskaya	75.2	54.4	67.6	96.6	80.4	79.7	64.1	72.0	97.9	84.4
Poltavskaya	19.8	57.5	50.4	87.1	64.2	28.1	69.4	58.3	88.0	65.1
Rovensskaya	100.0	70.4	71.8	101.0	141.3	100.0	78.0	80.5	101.2	144.2
Stalinskaya	48.1	--	76.6	68.3	76.7	60.7	--	83.2	69.0	78.0
Stanislavskaya	69.8	61.9	51.9	80.4	82.0	76.7	70.6	61.1	83.4	85.9
Sumskaya	13.7	61.8	54.1	68.7	111.2	32.2	73.6	62.0	69.3	119.1
Ternopol'skaya	64.9	66.5	54.0	92.0	96.8	74.3	76.3	63.3	96.5	102.4
Vinnitskaya	52.6	67.1	43.8	91.6	72.6	60.6	77.9	51.0	92.5	81.6
Volynskaya	54.5	83.2	52.6	87.2	103.1	68.2	86.7	62.8	90.5	105.1
Veroshilovgradskaya	33.4	60.0	84.9	51.2	73.5	47.0	73.3	90.6	51.4	73.8
Zakarpatskaya	26.7	--	48.8	77.1	132.0	40.4	--	53.2	79.8	128.1
Zaporozh'skaya	77.7	--	68.5	92.7	117.3	86.3	--	74.9	93.8	118.4
Zhitomir'skaya	22.2	60.8	64.9	52.8	101.2	28.3	73.2	72.8	53.1	104.1
Republic as whole	49.3	66.3	60.6	82.0	89.2	58.3	77.1	67.8	83.0	92.2

CONFIDENTIAL

- 10 -

CONFIDENTIAL

50X1-HUM

Oblasts	20 Oct (41)					25 Oct (42)				
	Maize	Sugar	Winter	Coarse	Ensilage	Maize	Sugar	Winter	Coarse	Ensilage
	Harvested	Beets Harvested	Fallow Plowed	Fodder Procured		Harvested	Beets Harvested	Fallow Plowed	Fodder Procured	
Chernigovskaya	32.0	76.0	84.3	60.1	94.2	54.2	92.0	90.0	60.5	96.4
Chernovitskaya	94.2	82.0	62.8	105.5	85.3	96.4	94.8	69.4	105.9	88.2
Dnepropetrovskaya	77.2	92.0	79.5	88.9	94.7	86.4	96.0	89.7	90.5	95.2
Drogobychskaya	69.0	86.8	48.6	71.3	87.7	82.8	92.7	59.8	73.4	90.1
Izmail'skaya	70.3	--	77.3	123.5	132.7	82.4	--	83.6	124.7	133.9
Kamenets-Podol'skaya	56.2	78.8	69.0	83.7	87.7	71.8	91.0	78.1	85.3	96.7
Khar'kovskaya	48.7	95.4	90.1	74.8	78.0	67.8	99.1	94.7	75.2	79.6
Khersonskaya	76.8	--	70.3	103.6	113.1	85.3	--	75.3	105.9	88.2
Kiyevskaya	50.7	94.3	65.5	87.1	85.9	68.1	98.4	74.5	87.4	87.5
Kirovogradskaya	70.8	94.2	82.7	91.2	82.0	84.0	97.6	89.1	91.8	93.6
L'vovskaya	48.8	92.6	54.1	69.1	91.3	62.8	96.3	62.1	70.1	82.2
Nikolayevskaya	87.2	100.0	82.5	101.1	112.1	93.2	100.0	86.2	101.4	112.1
Odesskaya	83.2	74.6	76.5	98.8	87.1	88.2	85.5	81.5	99.8	90.0
Poltavskaya	38.6	81.7	68.4	88.3	67.4	56.6	92.4	76.8	88.9	70.2
Rovenskaya	100.0	86.0	87.8	101.2	145.5	100.0	97.3	95.5	101.2	146.9
Stalinskaya	77.8	--	89.6	69.4	78.8	90.9	--	93.4	69.8	80.7
Stanislavskaya	83.6	79.4	72.5	85.5	89.5	88.8	92.5	80.8	87.6	91.8
Sumskaya	76.7	86.3	71.4	70.0	125.9	92.1	95.5	79.1	70.5	131.2
Ternopol'skaya	81.3	87.5	73.3	97.2	107.2	96.7	96.5	82.8	97.8	111.3
Vinnitskaya	67.1	87.7	59.1	93.2	88.2	77.7	95.6	68.2	92.8	96.7
Volynskaya	73	91.2	71.3	92.1	108.0	100.0	96.5	80.8	96.9	108.0
Voroshilovgradskaya	62.2	86.7	95.3	51.7	74.2	79.2	93.3	97.6	51.9	74.4
Zakarpatskaya	54.4	--	58.6	81.0	130.3	70.6	--	63.0	81.4	132.7
Zaporozhskaya	92.2	--	81.2	93.9	119.2	96.2	--	86.3	94.8	119.9
Zhitomirskaya	35.8	86.1	82.7	53.4	106.5	58.7	97.0	88.7	58.7	108.3
Republic as whole	68.7	87.1	75.9	83.7	95.1	80.7	95.2	82.8	84.7	97.5

CONFIDENTIAL

- 11 -

CONFIDENTIAL

50X1-HUM

CONFIDENTIAL

50X1-HUM

Moldavian SSR

The following table shows percentage fulfillment of 1953 plans for sowing of winter grain crops, plowing of winter fallow, and harvesting of various crops in kolkhozes of the republic:

<u>Operation</u>	5 Oct (43)	10 Oct (44)	15 Oct (45)	20 Oct (46)	25 Oct (47)
Winter grain crops sown	65.0	69.9	73.8	77.0	81.0
Winter fallow plowed	41.2	43.9	46.3	48.0	51.0
Sunflowers reaped	89.6	95.3	97.7	99.0	--
Maize harvested	76.2	81.1	84.5	87.0	90.0
Sugar beets harvested	48.5	61.1	71.0	80.0	88.0
Soy beans harvested	77.6	90.6	95.1	97.0	98.0

Eighteen specialists of the Ministry of Agriculture and Procurement Moldavian SSR and 20 specialists from industrial enterprises of the city of Kishinev had applied for transfer to the country by 13 October. By this date, 438 agronomists, zootechnicians, and veterinarians from the apparatuses of rayon administrations of agriculture and procurement had been sent to MTS. (36)

Georgian SSR

In the mountainous areas of Georgia, there are about 2 million hectares of pastures which should be able to maintain several million head of livestock. Actually, there is enough grazing on these pastures to maintain less than one million head, since they have deteriorated as a result of poor care. At present, almost 900,000 hectares of these pastures are overgrown with weeds; fairly good grasses grow on only small areas of these pastures. (48)

Armenian SSR

The following table shows percentage fulfillment of 1953 plans for harvesting of grain crops and natural grasses, sowing of winter grain crops, and plowing of winter fallow in kolkhozes of the republic, as of 1 October (49):

<u>Operation</u>	<u>Fulfillment</u>
Grain crops reaped	94.9
Including reaped by combine	92.3
Natural grasses mowed	91.7
Sowing of winter grain crops	39.5
Winter fallow plowed	10.0

The following table shows percentage fulfillment of the 1953 plan for harvesting of cotton in kolkhozes of the cotton-growing rayons of the republic. Data for some days (\*), for which no reports were published in the press, were derived by deducting the following day's increment (Incr) from total fulfillment (Fulfill) as of that day:

- 12 -

CONFIDENTIAL

CONFIDENTIAL

50X1-HUM

Rayons	29 Sep (*)	30 Sep (50)		16 Oct (*)	17 Oct (51)		19 Oct (52)
		Fulfill	Incr		Fulfill	Incr	
Artashatskiy	17.28	18.49	1.21	39.69	41.06	1.37	43.12
Echmiadzinskiy	27.52	29.40	1.88	55.50	57.16	1.66	59.83
Oktemberyanskiy	26.74	28.62	1.88	59.57	61.15	1.58	64.59
Vedinskiy	26.45	28.15	1.70	49.13	50.52	1.39	53.78
Total	24.54	26.23	1.69	51.90	53.43	1.53	56.28

As of 7 October 1953, there were standard repair shops in almost 70 percent of the MTS in the republic.(10)

#### Azerbaydzhan SSR

By 26 October, kolkhozes and sovkhoses of the republic had fulfilled the 1953 plan for delivery of grain to the state 100.7 percent, including that for delivery of wheat 105.2 percent. Delivery of grain and rice for MTS services was continuing.(53)

The first cotton-harvesting machines appeared on the fields of the republic 4 years ago. Now every MTS in the republic has such machines at its disposal. In the first year that machines were used, the plan for mechanical harvesting of cotton was fulfilled 48 percent. But in 1951 and 1952, productive utilization of the machines declined, so that the plan was fulfilled only 6.3 percent in 1952. By the beginning of October 1953, sharp lags in the use of the machines had again been noted.(54)

As of 1 October, the 1953 plan for harvesting of cotton with mechanical cotton pickers was not being fulfilled in the republic. As of this date, only 130 metric tons of cotton had been picked mechanically. Defoliation with cyanamide had been performed on only 8,691 hectares, or only 18 percent of the area planned.

In Saatlinskiy Rayon, where 44 machines were available for use, only 2.7 metric tons had been harvested with them; in Udzharskiy Rayon, with 40 machines, only 2.5 metric tons; and in Khaldanskiy Rayon, with 40 machines, only 5.4 metric tons.

Many kolkhoz leaders and workers are reluctant to exert effort in the proper operation of cotton-harvesting machines, with the result that most cotton is picked manually.

To improve the situation, the Council of Ministers Azerbaydzhan SSR and the Central Committee of the Communist Party, Azerbaydzhan SSR, issued the following decree:

1. That measures be taken to expand defoliation of the fields with cyanamide.
2. That all available ODN spraying machines and civil-aviation planes be used for this purpose.
3. That operators of cotton-harvesting machines be adequately instructed in their operation.(55)

[An article entitled "October, the Decisive Month for the Cotton Harvest" by I.K. Abdullayev, Minister of Agriculture and Procurement Azerbaydzhan SSR, contained the following information:]

- 13 -

CONFIDENTIAL

CONFIDENTIAL

50X1-HUM

By 5 October, kolkhozes and sovkhoses of the republic had delivered to the state 1.5 times as much cotton as they had delivered by this date in the very good crop year 1950 or 2.5 times as much as they had delivered by this date in 1952.

However, the harvesting tempo and the results accomplished thus far could not be considered satisfactory since harvesting of the fiber was lagging behind ripening of the crop. In all rayons, bolls had opened to such an extent that it should have been possible to fulfill the plan for delivery of cotton to the state 2.5-3.0 percent daily.

The quality of harvesting and organization of deliveries indicated that some kolkhozes and rayons were forging ahead in fulfilling the plan and others were lagging.

The average daily amount of cotton picked manually was 65-70 kilograms per picker in kolkhozes of Pushkinskiy Rayon, the leading rayon in percentage fulfillment of the delivery plan; in leading kolkhozes of the rayon, this figure was 80 kilograms and higher.(7)

The following table shows percentage fulfillment of the 1953 plan for cotton procurement in kolkhozes of rayons and sovkhoses of the republic. Data for some days (\*), for which no reports were published in the press, were derived by deducting the following day's increment (Incr) from total fulfillment (Fulfill) as of that day:

<u>Rayons</u>	<u>29 Sep (56)</u>	<u>30 Sep (57)</u>	<u>1 Oct (58)</u>	<u>2 Oct (59)</u>	<u>3 Oct (*)</u>
Agdamskiy	72.27	73.05	73.88	74.99	76.14
Agdashski	55.93	56.17	57.17	58.38	59.46
Agdzhabedinskiy	62.28	63.72	64.68	66.61	68.61
Akhsuinskiy	77.63	78.16	78.48	79.62	81.17
Akstafinskiy	61.79	64.19	66.03	67.55	69.13
Alibayramlinskiy	47.86	49.48	50.89	52.24	53.76
Astrakhanbazarakiy	44.42	44.79	45.16	45.70	46.39
Bardinskiy	59.55	61.05	62.14	63.84	65.40
Dzhebrail'skiy	52.86	53.81	54.74	56.46	58.32
Geokchayskiy	58.10	58.25	58.88	60.28	61.91
Imshlinskiy	58.36	60.13	61.38	62.99	65.27
Karyaginskiy	60.02	60.90	61.64	62.88	64.75
Kasumizmaylovskiy	60.49	61.98	63.09	64.30	65.57
Kazakhskiy	64.05	67.66	68.87	70.49	72.15
Khaldanskiy	48.42	48.99	50.45	51.49	52.29
Khillinskiy	49.82	51.87	53.29	54.46	55.79
Kubatlinskiy	50.60	50.60	50.60	52.49	54.26
Kyurdamirskiy	58.44	59.46	60.48	62.20	63.85
Mardakertskiy	48.21	48.58	49.96	51.00	52.18
Mirbashirskiy	56.61	57.90	58.73	60.06	61.64
Nakhichevanskiy	53.10	54.48	56.78	58.88	60.98
Norashenskiy	40.52	42.59	44.47	46.40	49.74
Pushkinskiy	81.80	85.41	86.20	87.84	89.53
Saatlinskiy	50.26	51.66	53.37	54.73	56.02
Sibirabadskiy	44.60	46.27	46.98	48.10	49.45
Safaraliyevskiy	54.45	56.04	56.96	58.17	59.55
Sal'yanskiy	47.92	50.93	52.60	53.27	55.30
Samikhskiy	75.50	76.57	77.43	78.86	80.13
Shamkhorskiy	53.49	55.08	56.03	57.39	58.72
Tauzskiy	53.82	55.48	57.70	60.12	62.34
Udzharskiy	52.40	53.04	53.53	54.41	55.45
Yevlakhskiy	71.11	73.12	74.82	76.62	78.14

- 14 -

CONFIDENTIAL

CONFIDENTIAL

50X1-HUM

<u>Ravens</u>	<u>29 Sep (56)</u>	<u>30 Sep (57)</u>	<u>1 Oct (58)</u>	<u>2 Oct (59)</u>	<u>3 Oct (*)</u>
Zangelanskiy	46.87	48.32	49.98	51.15	52.85
Zardobskiy	49.74	50.80	52.03	53.47	55.41
Zhdanovskiy	51.93	53.37	54.76	56.64	58.54
<u>Sovkhoz'es</u>					
No 1	26.39	27.64	28.29	29.19	29.77
No 2	58.48	58.48	58.48	58.48	66.06
No 3	31.11	31.50	32.33	33.58	35.01
No 5	28.84	30.32	31.67	32.88	34.23
No 6	78.73	78.73	78.73	78.73	90.15

<u>Ravens</u>	<u>4 Oct (60)</u>		<u>5 Oct (7)</u>	<u>6 Oct (*)</u>	<u>7 Oct (61)</u>		<u>8 Oct (62)</u>	
	<u>Fulfill</u>	<u>Incr</u>			<u>Fulfill</u>	<u>Incr</u>		
Agdamskiy	77.51	1.37	78.98	80.47	81.37	0.90	82.37	
Agdashskiy	60.64	1.18	61.86	63.00	63.92	0.92	64.98	
Agdzhahbedinskiy	70.44	1.83	72.16	74.09	76.47	2.38	77.54	
Akhsuinskiy	82.19	1.02	83.28	85.13	86.27	1.34	86.75	
Akstafinskiy	70.94	1.81	72.68	74.40	76.25	1.85	78.17	
Alibayramlinskiy	55.30	1.54	56.94	58.54	60.00	1.46	61.46	
Astrakhanbazarskiy	47.10	0.71	48.68	49.00	49.89	0.89	51.31	
Bardinskiy	67.09	1.69	68.50	69.90	71.29	1.39	72.69	
Dzhebrail'skiy	60.78	2.46	62.66	64.72	66.83	2.11	68.13	
Geokchayskiy	63.19	1.28	64.41	65.99	67.24	1.25	68.26	
Imishlinskiy	67.40	2.13	69.61	71.74	73.76	2.02	75.32	
Karyaginskiy	66.49	1.74	68.43	70.34	72.18	1.84	73.54	
Kasumizmaylovskiy	66.90	1.33	68.18	69.21	70.24	1.03	71.25	
Kazakhskiy	74.32	2.17	76.28	77.88	79.56	1.68	81.24	
Khaldanskiy	53.07	0.78	54.25	55.26	56.15	0.89	57.14	
Khillinskiy	57.84	2.05	59.96	61.46	62.99	1.53	63.61	
Kubatlinskiy	56.47	2.21	60.29	62.64	64.44	1.80	66.86	
Kyurdamirskiy	65.38	1.53	67.29	68.83	70.23	1.40	71.47	
Mardakertskiy	53.77	1.59	55.57	57.20	58.37	1.17	59.96	
Mirbashirskiy	63.23	1.59	64.73	66.08	67.33	1.25	68.55	
Nakhichevanskiy	63.11	2.13	65.38	67.24	68.78	1.54	69.79	
Norashenskiy	50.13	1.87	52.12	53.87	55.26	1.39	55.90	
Pushkinskiy	90.71	1.18	92.22	93.73	95.54	1.81	97.62	
Seatlinskiy	57.61	1.59	58.97	60.51	61.89	1.38	63.43	
Sabirabadskiy	51.16	1.71	52.66	53.92	55.14	1.22	56.26	
Safareliyevskiy	60.96	1.41	62.66	63.96	65.24	1.28	66.32	
Sal'yanskiy	57.61	2.31	59.67	61.66	63.36	1.70	64.75	
Samikhskiy	80.85	0.72	82.28	82.88	84.28	1.40	85.07	
Shankhorskiy	59.82	1.10	60.84	61.79	62.60	0.81	63.44	
Tauzskiy	64.50	2.16	66.64	68.51	70.28	1.77	72.22	
Udzharskiy	56.52	1.07	57.61	58.60	59.57	0.97	60.36	
Yevlakhskiy	79.60	1.46	80.95	82.17	83.35	1.18	84.45	
Zangelanskiy	54.50	1.65	56.17	57.93	59.31	1.38	60.49	
Zardobskiy	57.51	2.10	59.63	61.51	63.13	1.62	64.41	
Zhdanovskiy	60.47	1.93	62.26	63.92	65.38	1.46	66.83	
<u>Sovkhoz'es</u>								
No 1	30.73	0.96	31.77	32.70	33.84	1.14	34.44	
No 2	67.88	1.82	69.09	69.09	69.09	0.00	73.63	
No 3	36.48	1.47	38.56	40.35	42.33	1.98	43.45	
No 5	36.23	2.00	37.73	39.67	41.99	2.32	44.04	
No 6	93.97	3.82	102.54	102.54	102.54	0.00	110.79	

- 15 -

CONFIDENTIAL

50X1-HUM

CONFIDENTIAL

<u>Ravens</u>	<u>9 Oct (63)</u>	<u>10 Oct (*)</u>	<u>11 Oct (64)</u>	<u>12 Oct (65)</u>	<u>13 Oct (66)</u>	
			<u>Fulfill</u>	<u>Incr</u>		
Agdamskiy	83.29	84.13	84.87	0.74	85.55	86.21
Agdashskiy	65.81	66.34	66.98	0.64	68.01	68.67
Agdzhabedinskiy	78.69	79.88	81.52	1.64	82.57	83.88
Akhsuinskiy	87.72	87.94	88.31	0.37	88.55	88.79
Akstafinskiy	80.27	81.70	81.80	0.10	82.96	84.33
Alibayramlinskiy	62.77	64.54	66.08	1.54	67.65	68.97
Astrakhanbazaraskiy	52.22	53.00	53.34	0.34	53.78	54.18
Bardinskiy	73.86	75.24	76.36	1.12	77.56	78.54
Dzhobrail'skiy	69.70	71.81	73.03	1.22	73.97	75.20
Geokchayskiy	69.44	70.12	70.61	0.49	71.55	72.35
Imishlinskiy	76.93	78.75	80.06	1.31	81.37	82.77
Karyaginskiy	74.90	76.22	77.72	1.50	79.19	80.59
Kasumizmaylovskiy	72.31	73.10	73.70	0.60	74.28	74.93
Kazakhskiy	82.92	84.16	84.18	0.02	85.29	86.73
Khaldanskiy	58.04	58.27	59.06	0.79	59.80	60.21
Khillinskiy	64.97	66.87	68.34	1.47	69.61	70.64
Kubatlinskiy	68.69	71.49	73.06	1.57	74.58	75.37
Kyurdamirskiy	72.54	73.60	74.36	0.76	75.69	76.72
Kardakertskiy	60.74	62.56	63.51	0.95	64.60	65.99
Mirbshirskiy	69.79	71.10	72.31	1.21	73.40	74.44
Nakhichevanskiy	71.40	74.30	75.38	1.08	76.90	78.27
Norashonskiy	57.16	58.79	60.26	1.47	61.70	63.22
Pushkinskiy	100.20	101.40	101.84	0.48	102.60	103.24
Saatlinskiy	64.81	66.13	67.34	1.21	68.33	69.56
Sabirabadskiy	57.31	58.38	59.06	0.68	59.93	60.74
Safaraliyevskiy	67.52	68.63	69.12	0.49	69.66	70.63
Sal'yanskiy	66.60	68.13	69.62	1.49	70.83	71.91
Samkhskiy	85.78	86.00	86.71	0.71	87.07	87.64
Shamkhorskiy	64.15	64.78	64.95	0.17	65.36	65.97
Tauzskiy	74.29	76.97	77.23	0.26	78.33	79.61
Udzharskiy	61.06	61.57	62.28	0.51	62.94	63.68
Yevlakhskiy	85.36	86.47	87.36	0.89	88.12	88.84
Zangelanskiy	61.59	62.67	63.70	1.03	64.86	65.91
Zardobskiy	65.86	67.34	68.26	0.92	69.41	70.77
Zhdanovskiy	67.90	69.41	70.97	1.56	72.09	73.27
<u>Sovkhozes</u>						
No 1	35.15	35.87	36.83	0.96	37.51	38.29
No 2	73.86	76.97	76.97	0.00	79.69	79.69
No 3	45.17	46.32	48.88	2.56	50.60	51.78
No 5	46.01	47.43	48.78	1.35	50.80	51.99
No 6	110.79	116.19	116.19	0.00	120.95	122.53

- 16 -

CONFIDENTIAL



50X1-HUM

CONFIDENTIAL

<u>Ravens</u>	<u>14 Oct (67)</u>	<u>15 Oct (68)</u>	<u>16 Oct (69)</u>	<u>17 Oct (*)</u>	<u>18 Oct (70)</u>	
					<u>Fulfill</u>	<u>Iner</u>
Agdamskiy	86.70	86.99	87.25	87.53	87.81	0.28
Agdashkiy	69.29	69.59	69.71	70.16	71.11	0.95
Agdzhabedinskiy	84.95	85.35	85.59	85.77	86.25	0.48
Akhsuinskiy	89.30	89.55	89.91	90.45	91.34	0.89
Akstafinskiy	85.39	85.92	86.15	86.30	87.19	0.89
Alibayramlinskiy	70.43	71.40	72.96	74.25	75.87	1.62
Astrakhanbazarskiy	54.18	54.18	54.18	54.42	54.94	0.52
Bardinskiy	79.57	80.17	80.35	80.57	81.09	0.52
Dzhebrail'skiy	76.00	76.86	77.56	78.21	78.94	0.73
Geokchayskiy	72.93	73.35	73.55	73.96	74.97	1.01
Imishlinskiy	83.27	83.82	84.57	85.68	87.02	1.34
Karyaginskiy	81.26	81.43	81.86	82.46	83.56	0.90
Kasunizmaylovskiy	75.51	75.81	75.93	76.16	76.38	0.22
Kazakhskiy	87.38	87.61	87.71	87.79	88.59	0.80
Khaldaanskiy	60.65	61.24	61.46	61.97	62.60	0.63
Khillinskiy	70.64	71.10	71.79	72.80	74.13	1.33
Kubatlinskiy	76.80	77.48	78.73	80.11	81.33	1.20
Kyurdanirskiy	77.58	77.88	78.11	79.01	80.05	1.04
Mardakertskiy	66.71	67.11	67.35	67.60	67.69	0.09
Mirbashirskiy	75.39	75.95	76.11	76.21	76.62	0.41
Nakhichevanskiy	79.56	80.83	82.13	83.44	84.79	1.35
Norushonskiy	64.54	65.79	66.94	68.18	68.57	0.39
Pushkinskiy	103.24	103.24	103.24	103.32	103.54	0.22
Saatlinskiy	70.64	71.30	71.83	72.81	73.82	1.01
Sabirabadskiy	61.40	61.59	62.17	62.94	63.85	0.91
Safaraliyevskiy	71.60	72.10	72.26	72.43	72.71	0.28
Sal'yanskiy	72.05	72.19	73.27	74.28	75.37	1.09
Samakhskiy	88.28	88.50	88.64	88.78	89.07	0.29
Shamkhorskiy	66.49	66.58	66.90	66.95	67.09	0.14
Tauzskiy	80.19	80.40	81.21	81.47	81.78	0.31
Udzharskiy	64.12	64.25	64.37	64.56	65.10	0.54
Yevlakhskiy	89.45	89.89	89.97	90.18	90.56	0.38
Zangelanskiy	66.95	67.81	68.80	69.58	70.36	0.78
Zardobskiy	71.88	72.18	72.64	72.99	73.64	0.65
Zhdanovskiy	73.72	74.19	74.51	74.79	75.32	0.53
<u>Sovkholes</u>						
No 1	39.04	39.40	39.63	40.50	41.85	1.35
No 2	80.60	80.60	80.60	80.60	82.12	1.52
No 3	52.33	52.33	53.13	53.70	54.88	1.18
No 5	53.04	53.04	53.45	54.31	54.82	0.51
No 6	125.71	127.30	127.30	127.30	127.61	0.31

[No additional reports were published during the rest of October.]

- 17 -

CONFIDENTIAL

50X1-HUM

CONFIDENTIALRSFSR

After World War II, sowing of hard wheat declined in kolkhozes and sovkhazes of Chkalovskaya Oblast. While 21.4 percent of all spring wheat sown in the oblast in 1938 was hard wheat, only 11.7 percent of that sown in 1949 was hard wheat.

During the last 4 years, kolkhozes of the oblast again increased sowing of hard wheat; 372,000 hectares were sown in 1951 and 450,000 hectares in 1952. In 1953, the plan for sowing of hard wheat was exceeded when 506,000 hectares were sown.(3)

[The report by N. G. Ignatov, Secretary of the Leningradskaya Oblast Committee of the CPSU, to the Plenum of the committee in session on 1-2 October, contained the following information on further development of agriculture (sown area, crops, mechanization, fertilization, and agricultural labor) in the oblast:]

Despite a great amount of technical equipment and financial investment in agriculture of the oblast, the yield of agricultural crops has not increased as compared with the prewar period and continues to be low.

By 1955, the area devoted to perennial grasses in the oblast is to have increased to 74,000 hectares and that devoted to annual grasses to 7,000-8,000 hectares.

Figures indicate that great shortcomings exist in potato and vegetable production in the oblast. In kolkhozes of the oblast, the vegetable harvest per hectare was 24.8 quintals in 1951 and 17.1 quintals in 1952; the potato harvest was 37.7 quintals in 1951 and 39.3 quintals in 1952. There are many kolkhozes in the oblast where the total vegetable yield does not cover the cost of seed and labor.

In 1952, 22.3 percent of the area planted to vegetables became overgrown with weeds and the vegetables died from lack of care.

Contributing to the low production of vegetables, particularly early vegetables, is the neglected condition of hotbeds and hothouses, which are unable even to grow seedlings for planting. Since consolidation of kolkhozes was carried out, almost nothing has been done to reconstruct hotbeds and hothouses. Kolkhozes grow almost no vegetables in soil under glass. Growing of seedlings in peat-humus pots is almost nonexistent. The question of growing vegetable and potato seed has not been solved.

Beginning with the current harvest, kolkhozes and sovkhazes are to supply themselves with seed potatoes. Production of early potatoes is to be increased so that the population of Leningrad will begin receiving them on 1 July. In 1954-1955, vegetable seedlings are to be grown primarily in peat-humus pots. In 1953-1954, hotbeds and hothouses are to be fully reconstructed.

There are also serious shortcomings in grain growing. In 1950-1952, the area devoted to oats and barley decreased 27 percent. Sowing of oats and barley must increase in 1954-1955 to meet the needs of animal husbandry. One of the main reasons for low grain-crop yields, especially in the northeastern portion of Leningradskaya Oblast and on the Karelian Isthmus, is the inadequate application of organic and mineral fertilizers, especially manure, peat, and peat compost.

- 18 -

CONFIDENTIAL

CONFIDENTIAL

50X1-HUM

MTS perform three fourths of all agricultural work in kolkhozes. The capacity of the tractor park in the oblast is now three times as great as 3 years ago, while the number of combines is 18 times as great. But only three out of 55 MTS and specialized stations have repair shops built according to specific plans. In 1953-1956, a 400-million-ruble construction program is to be carried out in MTS of the republic.

Of 2,311 agricultural specialists with higher or secondary educations, only 176 work directly in kolkhozes and 700 in MTS; the rest are in the apparatuses of agricultural organs.

In 1953, the Leningradskaya Oblast party organization has the task of selecting 300 qualified engineers and mechanics with supervisory experience to serve in MTS and specialized stations as directors, chief engineers, and repair-shop chiefs.(71)

Kolkhozes of Stavropol'skiy Kray had finished harvesting sunflowers by 22 October, which was 15 days earlier than in 1952. The entire area devoted to sunflowers was harvested with specially equipped grain combines. The highest yields were obtained from fields sown by the check-row method. In the Kolkhoz imeni Stalin in Novo-Aleksandrovskiy Rayon, a yield of 17 quintals of seeds per hectare was obtained from 1,200 hectares sown by this method.(72)

In 1953, kolkhozes of Chkalovskaya Oblast expanded the area planted to potatoes by almost 6,000 hectares.(73)

By 30 October, kolkhozes and sovkhoses of Kaliningradskaya Oblast had fulfilled the 1953 plan for procurement and purchase of potatoes 101 percent and for vegetables 120 percent.(74)

In 1953, the area devoted to vegetables in kolkhozes, sovkhoses, and subsidiary enterprises of Kemerovskaya Oblast was expanded 10.2 percent as compared with 1952; the area devoted to potatoes was expanded 8.6 percent as compared with 1952.(75)

Planting of potatoes in Krasnodarskiy Kray was not carried out during the best agrotechnical period in the spring of 1953. Kolkhozes of the kray had planted only 0.9 percent of the potatoes by 1 April, 18 percent by 10 April, 56 percent by 20 April, 82 percent by 1 May, and finally finished planting by 15 June. Thus, one half of the potatoes were planted late with the result that the yield was reduced on the late-planted fields.

Harvesting of potatoes in the kray has been a long process year after year with the result that many potatoes remained in the ground. The same situation prevailed in 1953. As of 20 October, only 53 percent of the potatoes had been harvested. At the rate of harvest as of 24 October, another 2-3 months would be required to harvest the entire crop.(14)

To assure a better supply of early vegetables for the industrial centers of Moskovskaya Oblast, construction of hotbed-hothouse combines had begun by 5 October 1953 in 38 rayons of the oblast. About 300 kolkhozes located near industrial centers were expanding or establishing hotbed installations.

Each hotbed-hothouse combine is to consist of the following structures: a hothouse, a heating plant, hotbeds, a house for the vegetable-growing brigade with an office for the brigade leader, a Red reading corner, a laboratory, a shop for producing peat-humus pots, a refrigerator plant, a vegetable storehouse, and a shop for repairing hotbed frames.

- 19 -

CONFIDENTIAL

CONFIDENTIAL

50X1-HUM

The hothouses are to be designed so that it will be possible to maintain the desired temperature and humidity. Sash pieces into which the glass frames are fitted are to be made of reinforced concrete. Construction of the combines was being carried out at kolkhoz expense by such large Moscow enterprises as the Plant imeni Stalin and the Serp i Molot Plant.

By the spring of 1954, 16,000 square meters of hothouses and more than 175,000 square meters of hotbeds are to be ready for use.(76)

As of 10 October 1953, a large hotbed-hothouse combine was being built in the city of Novosibirsk; when completed, it is to produce more than 3,000 metric tons of vegetables annually. The first section of the combine was scheduled to go into operation before the end of 1953.(77)

Kolkhozes of Tambovskaya Oblast fulfilled the 1953 plan for delivery of potatoes to the state on 20 October; they had pledged to fulfill the plan by 7 November.(78)

Sovkhozes of Chelyabinskaya Oblast finished plowing of winter fallow on 25 October. They plowed 9,000 more hectares than in 1952. Plowing of black summer fallow was also being completed as of 25 October.(23)

The grain growers of Saratovskaya Oblast were striving to provide winter fallow for the entire area on which spring grain crops are to be sown in 1954. By 5 October 1953, 600,000 more hectares of winter fallow had been plowed than by the same date in 1952.(73)

By 25 October, almost 450,000 more hectares had been plowed for spring sowing in kolkhozes of Stalingradskaya Oblast than by the same date in 1952.(79)

The following table shows percentage fulfillment of various 1953 plans in kolkhozes of Kalininskaya and Smolenskaya oblasts, as of 10 September (80):

<u>Operations</u>	<u>Kalininskaya</u>	<u>Smolenskaya</u>
Potatoes dug	50	62
Winter fallow plowed	25	27
Coarse fodder procured	40	47
Ensilage stored	77	62

The following table shows percentage fulfillment of various 1953 plans in kolkhozes of Penzenskaya and Ul'yanovskaya oblasts, as of 20 September (81):

<u>Operations</u>	<u>Penzenskaya</u>	<u>Ul'yanovskaya</u>
Sunflowers harvested	99	85
Potatoes dug	97	95
Fodder root crops harvested	77	68
Coarse fodder procured	64	67
Winter fallow plowed	88	87

The following table shows percentage fulfillment of various 1953 plans in kolkhozes of Pskovskaya and Velikolukskaya oblasts, as of 25 September (82):

<u>Operations</u>	<u>Pskovskaya</u>	<u>Velikolukskaya</u>
Potatoes dug	97	93
Fodder root crops harvested	63	57
Coarse fodder procured	55	53
Winter fallow plowed	26	24
Black summer fallow plowed	5	5

- 20 -

CONFIDENTIAL

50X1-HUM

CONFIDENTIAL

More than 400 mechanics, agronomists, zootechnicians, tractor drivers, turners, locksmiths, electricians, and other specialists had been sent to kolkhozes and MTS of Novosibirskaya Oblast by 7 October. Nineteen specialists with higher educations, who had been responsible workers in the Novosibirskaya Oblast Administration of Agriculture and Procurement, became chief engineers, agronomists, and chiefs of repair shops in MTS.

By 7 October, more than 70 former agricultural machine operators had returned to their original professions in Kirovskaya Oblast and more than 80 former tractor drivers and combine operators had returned to MTS in Ul'yanovskaya Oblast. In Kemerovskaya Oblast, 99 specialists, who had worked in the Kemerovskaya Oblast Administration of Agriculture and Procurement and other administrative units, had returned to the country; these included 11 engineers and technicians, 60 agronomists, and 28 zootechnicians.(35)

Eighteen agricultural specialists, who had been working in various Pskovskaya Oblast agricultural organizations and departments but not at their specialties, had returned to MTS by 15 October. Also, 63 former tractor drivers, 3 combine operators, 5 tractor brigade leaders, 10 locksmiths, and 5 turners were back in MTS. From the apparatuses of rayon administrations of agriculture and procurement, 560 agronomists, zootechnicians, and veterinarians had been sent to MTS.

In Kuybyshevskaya Oblast, 118 former tractor drivers, combine operators, and locksmiths had returned to MTS by 15 October. From industrial enterprises of the city of Kuybyshev, 116 engineers and technicians had been sent to MTS; of these, 12 were appointed MTS directors; 40, chief engineers; and 54, heads of repair shops.(80)

From the apparatus of the Sverdlovskaya Oblast Administration of Agriculture and Procurement, 18 persons had been transferred to permanent work in the country by 13 October. From industrial enterprises of the city of Sverdlovsk, 160 qualified workers of various specialties had gone to kolkhozes and MTS, including 23 mechanics, 27 tractor drivers, 26 locksmiths, and 21 turners.(36)

#### Kazakh SSR

One of the main shortcomings in the development of grain growing in the republic is the unstable wheat yield in many kolkhozes and sovkhoses. In favorable years, wheat yield averages 10-15 or more, quintals per hectare; in dry years, it averages only 3-4 quintals per hectare.(83)

Kolkhozes of Vostochno-Kazakhstanskaya Oblast had begun to sow freshly harvested sunflower seed by 23 October. By the fall of 1953, several times the area sown in the fall of 1952 was to have been sown. The check-row method was being widely employed.

Sowing of freshly harvested sunflower seed in the fall is an effective method for raising the yield of the crop. Three years of experience showed that the seed yield was 1 1/2-2 times as great as when sunflowers were sown at the customary time.(20)

In recent years, kolkhozes in the southern oblasts of the republic permitted a considerable decline in the planting of potatoes. In 1953, for instance, 5,400 fewer hectares were planted than provided for in the plan. Almost one fourth of all kolkhozes in the southern oblasts planted no potatoes, the main reason being that they had no seed potatoes to plant.

- 21 -

CONFIDENTIAL

CONFIDENTIAL

50X1-HUM

Only 6 kolkhozes in Dzhambulskaia Oblast, 10 in Taldy-Kurganskaya Oblast, and 7 in Kzyl-Ordinskaya Oblast supplied themselves fully with seed potatoes in 1952 for planting in 1953. Many kolkhoz supervisors and rayon and oblast organizations had considered potatoes a second-rate crop and therefore did not pay adequate attention to the necessary techniques for potato growing and storing. (84)

In October, there were 459 MTS and MZHS (mechanized animal-husbandry station) in the republic. In 1953, they received 3,500 tractors, 2,000 combines, more than 2,600 self-propelled hay mowers, 6,700 tractor-drawn rakes, and many other agricultural machines. (83)

## Uzbek SSR

The following table shows percentage fulfillment of the 1953 plan for cotton procurement by oblasts of the republic. Data for some days (\*), for which no reports were published in the press, were derived by deducting the following day's increment (Incr) from total fulfillment (Fulfill) as of that day:

Oblasts and ASSR	30 Sep (11)	1 Oct (85)	2 Oct (86)	3 Oct (87)	4 Oct (*)
Andizhanskaya	38.13	40.07	40.92	41.87	43.74
Bukharskaya	52.26	53.91	54.74	55.76	56.98
Ferganskaya	32.81	34.56	35.44	36.22	37.40
Kara-Kalpakskaya ASSR	35.04	36.56	37.96	39.40	40.84
Kashka-Dar'inskaya	63.15	65.48	65.90	66.69	67.43
Khorezmskaya	34.60	36.33	37.58	38.36	40.53
Namanganskaya	35.59	37.56	38.37	39.17	40.74
Samarkandskaya	33.70	35.61	35.96	36.67	37.65
Surkhan-Dar'inskaya	36.33	38.11	38.66	39.37	40.54
Tashkentetskaya	34.22	36.37	36.54	36.96	37.57

	5 Oct (88)	6 Oct (89)	7 Oct (90)	8 Oct (91)	9 Oct (92)
	Fulfill	Incr			
Andizhanskaya	45.68	1.94	47.06	48.57	50.20
Bukharskaya	57.97	0.99	58.75	59.82	60.99
Ferganskaya	38.80	1.40	40.31	41.50	42.80
Kara-Kalpakskaya ASSR	41.82	0.98	43.25	44.69	46.26
Kashka-Dar'inskaya	68.62	1.19	69.05	70.01	71.49
Khorezmskaya	41.14	0.61	42.58	44.26	45.90
Namanganskaya	42.53	1.79	44.40	46.03	47.67
Samarkandskaya	38.14	0.49	38.90	40.22	42.04
Surkhan-Dar'inskaya	42.11	1.57	43.48	45.02	46.71
Tashkentetskaya	38.14	0.57	38.66	39.75	41.34

	10 Oct (93)	11 Oct (94)	12 Oct (95)	13 Oct (96)	14 Oct (*)
Andizhanskaya	53.36	55.15	55.85	56.01	56.57
Bukharskaya	63.00	64.11	64.89	65.66	66.67
Ferganskaya	45.56	46.96	47.78	47.92	48.22
Kara-Kalpakskaya ASSR	49.49	51.16	52.73	54.29	55.77
Kashka-Dar'inskaya	75.35	77.48	79.29	80.68	82.16
Khorezmskaya	49.16	50.91	52.31	53.66	54.95
Namanganskaya	50.82	52.56	53.55	53.94	54.40
Samarkandskaya	46.08	48.18	49.20	50.16	51.66
Surkhan-Dar'inskaya	50.27	52.21	53.84	55.38	56.64
Tashkentetskaya	45.30	47.59	48.11	48.87	49.57

- 22 -

CONFIDENTIAL

CONFIDENTIAL

50X1-HUM

<u>Oblasts and ASSR</u>	<u>15 Oct (97)</u>	<u>16 Oct (98)</u>	<u>17 Oct (99)</u>	<u>18 Oct (*)</u>	<u>19 Oct (100)</u>	
					<u>Fulfill</u>	<u>Incr</u>
Andizhanskaya	56.70	56.90	57.36	58.29	59.50	1.21
Bukharskaya	67.47	68.30	69.16	69.96	70.75	0.79
Ferganskaya	48.40	48.75	49.35	50.18	51.22	1.03
Kara-Kalpakskaya ASSR	56.55	57.68	59.00	60.22	61.43	1.21
Kashka-Dar'inskaya	83.53	85.01	86.46	87.66	88.78	1.12
Khorezmskaya	55.76	57.16	58.46	59.66	60.88	1.22
Namanganskaya	54.94	55.30	56.21	57.44	58.87	1.43
Samarkandskaya	53.00	54.63	56.36	58.07	59.87	1.80
Surkhan-Dar'inskaya	58.00	59.63	61.22	62.86	64.51	1.65
Tashkentskaya	49.76	50.32	51.09	52.28	53.75	1.47
	<u>20 Oct (101)</u>	<u>21 Oct (102)</u>	<u>22 Oct (103)</u>	<u>23 Oct (104)</u>	<u>24 Oct (105)</u>	
Andizhanskaya	60.97	62.56	63.14	63.59	65.18	
Bukharskaya	71.50	72.35	73.05	73.79	74.50	
Ferganskaya	52.33	53.54	54.22	54.82	56.15	
Kara-Kalpakskaya ASSR	62.68	64.01	65.25	66.56	67.45	
Kashka-Dar'inskaya	89.79	90.74	91.63	92.40	93.13	
Khorezmskaya	62.23	63.69	65.19	66.79	67.14	
Namanganskaya	60.21	61.79	62.84	63.78	65.25	
Samarkandskaya	61.69	63.64	65.57	67.57	69.50	
Surkhan-Dar'inskaya	66.18	68.03	69.03	71.01	72.44	
Tashkentskaya	55.46	57.48	59.30	61.27	63.13	
	<u>26 Oct (106)</u>	<u>27 Oct (107)</u>	<u>28 Oct (108)</u>	<u>29 Oct (109)</u>	<u>30 Oct (110)</u>	
Andizhanskaya	67.37	67.53	67.96	68.50	69.10	
Bukharskaya	75.00	75.17	75.53	76.01	76.62	
Ferganskaya	57.69	57.74	58.09	58.74	59.56	
Kara-Kalpakskaya ASSR	68.83	69.41	70.24	71.15	72.12	
Kashka-Dar'inskaya	93.79	93.99	94.28	94.76	95.30	
Khorezmskaya	68.77	69.55	70.69	71.68	72.62	
Namanganskaya	67.18	67.37	67.70	68.14	68.68	
Samarkandskaya	70.74	71.08	71.75	72.87	74.29	
Surkhan-Dar'inskaya	74.40	74.49	74.85	75.40	76.16	
Tashkentskaya	64.95	65.36	65.94	66.67	67.64	

- 23 -

CONFIDENTIAL

The following table shows percentage fulfillment of the 1953 plan for cotton procurement in sovkhoses of the republic:

Sovkhoses	1 Oct (85)	6 Oct (89)	11 Oct (94)	16 Oct (98)	21 Oct (102)	26 Oct (106)
Bayaut No 1	33.10	35.42	43.14	46.26	50.94	59.74
" No 2	29.64	31.31	38.95	41.04	44.91	52.49
" No 3	27.31	31.36	40.78	44.22	51.10	58.14
" No 4	31.96	35.31	44.53	46.44	50.46	59.58
Del'verz'in No 1	37.99	41.93	51.15	54.49	61.18	69.83
" No 2	24.58	26.98	33.95	37.94	42.49	52.34
" No 3	23.84	25.68	33.45	37.03	42.25	49.54
Gul'bakh	43.31	51.94	61.44	65.57	73.50	80.15
Imeni Pystiletiya UzSSR	28.92	29.88	35.55	40.14	46.15	52.24
Khazarbeg	35.54	39.88	48.98	58.07	66.00	73.65
Kzyl-Ravat	36.97	46.49	55.23	61.62	67.86	74.57
Malek	36.45	38.44	47.61	51.85	62.25	73.37
Narpay	40.12	45.01	55.95	62.83	73.81	78.52
Naryn	40.03	48.25	57.83	61.69	66.64	71.91
No 8	39.53	45.91	53.43	54.84	59.22	63.91
No 16	21.43	22.41	28.17	30.40	35.36	43.65
No 17	25.05	26.16	31.69	34.13	38.66	46.24
Pakhtalyk-Kul'	33.27	37.97	46.84	52.98	59.67	64.56
Savay	25.01	31.13	40.47	45.07	50.66	56.55
Surkhan	13.91	17.07	20.54	24.67	28.85	33.72
Total for sovkhoses	31.17	35.03	43.10	46.92	52.69	59.74

CONFIDENTIAL

- 24 -

CONFIDENTIAL

50X1-HUM



CONFIDENTIAL

50X1-HUM

The following table gives data on cotton harvesting in Samarkandskaya and Ferganskaya oblasts, as of 2 October (86):

<u>Item</u>	<u>Samarkandskaya</u>	<u>Ferganskaya</u>
Fulfillment of 1953 cotton procurement plan (%)	35.96	35.44
Fulfillment of plan in previous 5 days (%)	9.03	7.78
Percent of cotton procured which was top grade	91.20	99.90
Average daily production per manual picker (kg)	49.00	52.00

As of 2 October, these two oblasts, among the largest cotton producers in the republic, occupied last place among all the oblasts in percentage fulfillment of the 1953 cotton procurement plan. As shown in the table, they had fulfilled the plan little more than one third.

Some workers explained this fact by saying that the bolls opened late, but this was not true. The main reason was that party, state, and agricultural organs had not implemented their directives for enlisting the maximum number of kolkhoz workers, especially women, for the cotton harvest. Only 72.5 percent of the number of kolkhoz workers scheduled to participate in the cotton harvest were taking part in Ferganskaya Oblast and only 78.2 percent in Samarkandskaya Oblast. The indicated productivity of manual pickers was much too low. With mechanical cotton pickers, the average daily productivity was one hectare in Ferganskaya Oblast and 0.6 hectare in Samarkandskaya Oblast.

Kolkhozes of the two oblasts grew as good crops as those of the oblasts which were at the top in percentage fulfillment of the procurement plan. Thus, their task was to harvest it quickly and without loss and to cope with their quota for October. (86)

[An article entitled "On Measures to Speed up Harvesting and Delivery of Cotton to the State" contained the following information:]

The Council of Ministers Uzbek SSR and the Central Committee of the Communist Party, Uzbek SSR, noted that cotton ripened early in 1953, and that more than 75 percent of the bolls had opened by 1 October in all kolkhozes and sovkhoses of the republic, but that the tempo of harvesting and delivery of raw cotton to the state were below standard. In the republic as a whole, less cotton had been harvested and delivered than if harvesting work had been better organized.

It is necessary that additional measures be taken to assure early completion of harvesting and delivery of cotton to the state. Harvesting and delivery can be speeded up by: 1. increasing the number of pickers 30-35 percent by enlisting the aid of the female population of kolkhozes; 2. putting all cotton-harvesting machines into operation during the next 3-4 days; and 3. considerably increasing the productivity of both manual and mechanical pickers.

The task is to carry on harvesting work at such a level in October as to insure unconditional fulfillment of the plan for delivery of cotton to the state not later than by 7 November.

- 25 -

CONFIDENTIAL

CONFIDENTIAL

50X1-HUM

The Council of Ministers Uzbek SSR and the Central Committee of the Communist Party, Uzbek SSR, issue the following decree and charge the Council of Ministers Kara-Kalpakskaya ASSR, oblast executive committees, oblast party committees, the Ministry of Agriculture and Procurement Uzbek SSR, the Ministry of State Farms Uzbek SSR, rayon executive committees, and rayon party committees with its execution wherever it applies to them and falls within the scope of their responsibilities:

1. In October, to harvest and deliver to the state 55 percent of the amount of cotton provided for in the plan for the republic as a whole (65 percent in sovkhozes), distributed as follows: Kara-Kalpakskaya ASSR, 61; and the following oblasts: Andizhanskaya, 56; Bukharskaya, 47; Ferganskaya, 57; Kashka-Dar'inskaya, 40; Khorezmskaya, 60; Namanganskaya, 56; Samarkandskaya, 56; Surkhan-Dar'inskaya, 57; and Tashkentskaya, 55.

2. Not later than 1 October, to enlist the maximum number of pickers for the cotton harvest in order to accomplish the task set for October by enlisting the maximum number of able-bodied kolkhoz and sovkhoz workers and by appealing to the population of cities, rayon centers, and villages to participate in the cotton harvest. It is deemed incorrect practice that, in many kolkhozes, able-bodied women are not participating in the harvest; the organs mentioned above and the boards of kolkhozes are charged with correcting this shortcoming.

3. By 5 October, to put all repaired cotton-harvesting machines into operation. To harvest with machines 16.5 percent of the cotton scheduled for harvesting during October in the republic as a whole, distributed as follows: Kara-Kalpakskaya ASSR, 17.3; sovkhozes, 38.7; and the following oblasts: Andizhanskaya, 17.5; Bukharskaya, 17.6; Ferganskaya, 18.6; Kashka-Dar'inskaya, 7.8; Khorezmskaya, 17.2; Namanganskaya, 17.4; Samarkandskaya, 16.2; Surkhan-Dar'inskaya, 9.1; and Tashkentskaya, 17.0. To direct 500 engineers, technicians, mechanics, and machinists from organizations, enterprises, and educational institutions to MPS and sovkhozes for the purpose of aiding in mechanical harvesting of cotton.

4. Since many manual pickers and cotton-harvesting-machine operators in both kolkhozes and sovkhozes are not fulfilling the established daily and shift production norms due to late arrival and early departure, to insure that the workday begin at dawn and that all kolkhoz and sovkhoz workers and machine operators perform a full day's work. (11)

Uzbekistan is the traditional rice-growing region of the USSR. It has favorable climatic, soil and water conditions for growing this crop.

In 1940, the average rice yield in Uzbekistan was 30 quintals per hectare. This figure compared with 11-13 quintals per hectare before the October Revolution.

Rice is a labor-consuming crop to grow. For example, in kolkhozes with a yield of 40 quintals per hectare, labor expenditure exceeds 150 man-days per hectare. (90)

In 1952, the average grape yield in Samarkandskaya Oblast was 64.5 quintals per hectare. As compared with 1950, the figure represented an increase of 19.5 quintals per hectare. (111)

- 26 -

CONFIDENTIAL

CONFIDENTIAL

50X1-HUM

Turkmen SSR

The following table shows percentage fulfillment of the 1953 plan for cotton procurement by oblasts of the republic. Data for some days (\*), for which no reports were published in the press, were derived by deducting the following day's increment (Incr) from total fulfillment (Fulfill) as of that day:

<u>Oblasts</u>	<u>30 Sep (112)</u>	<u>1 Oct (113)</u>	<u>2 Oct (114)</u>	<u>3 Oct (115)</u>	<u>4 Oct (*)</u>
Ashkhabadskaya	56.13	57.50	58.18	59.22	60.64
Chardzhouskaya	33.37	34.46	35.21	36.02	37.10
Maryyskaya	32.28	33.58	34.06	34.87	36.11
Tashauzskaya	25.77	27.11	28.40	29.75	31.31

	<u>5 Oct (116)</u>	<u>6 Oct (117)</u>	<u>7 Oct (118)</u>	<u>8 Oct (119)</u>	<u>9 Oct (120)</u>
	<u>Fulfill</u>	<u>Incr</u>			
Ashkhabadskaya	61.88	1.24	63.32	64.50	65.73
Chardzhouskaya	37.84	0.74	38.96	40.03	41.02
Maryyskaya	37.28	1.17	38.54	39.98	41.18
Tashauzskaya	31.99	0.68	33.32	34.81	36.17

	<u>11 Oct (*)</u>	<u>12 Oct (121)</u>	<u>13 Oct (122)</u>	<u>14 Oct (123)</u>	<u>15 Oct (124)</u>
	<u>Fulfill</u>	<u>Incr</u>			
Ashkhabadskaya	69.19	70.16	0.97	71.24	72.24
Chardzhouskaya	43.97	44.94	0.97	46.06	47.13
Maryyskaya	44.76	46.13	1.37	47.42	48.84
Tashauzskaya	40.86	42.23	1.37	43.74	45.05

	<u>6 Oct (125)</u>	<u>17 Oct (126)</u>	<u>18 Oct (*)</u>	<u>19 Oct (127)</u>	<u>20 Oct (*)</u>
			<u>Fulfill</u>	<u>Incr</u>	
Ashkhabadskaya	74.30	75.22	76.10	76.94	0.84
Chardzhouskaya	49.02	49.88	50.83	51.79	0.96
Maryyskaya	51.57	52.62	54.71	54.79	1.08
Tashauzskaya	47.07	48.32	50.50	50.59	1.09

	<u>21 Oct (128)</u>	<u>22 Oct (129)</u>	<u>23 Oct (130)</u>	<u>25 Oct (*)</u>	<u>26 Oct (131)</u>
				<u>Fulfill</u>	<u>Incr</u>
Ashkhabadskaya	78.53	74.20	79.89	80.90	81.27
Chardzhouskaya	53.89	54.92	55.92	57.35	57.94
Maryyskaya	57.20	58.48	59.85	61.85	62.56
Tashauzskaya	52.94	54.21	55.62	57.67	58.06

<u>Oblasts</u>	<u>27 Oct (132)</u>	<u>28 Oct (133)</u>	<u>29 Oct (134)</u>	<u>30 Oct (135)</u>
Ashkhabadskaya	81.66	82.32	83.01	83.51
Chardzhouskaya	58.43	59.11	59.87	60.66
Maryyskaya	63.47	64.44	65.25	66.05
Tashauzskaya	58.90	59.87	60.77	61.58

- 27 -

CONFIDENTIAL

CONFIDENTIAL

50X1-HUM

In recent years, the areas devoted to vegetables, cucurbit crops, and potatoes in kolkhozes of Ashkhabadskaya Oblast has decreased; the yield has also decreased. As a result, the vegetable-growing kolkhozes of the oblast were unable to meet the demand of the population of vegetables and potatoes.(113)

Tadzhik SSR

Kolkhozes of the republic had finished harvesting oil flax by 22 October, which was 15 days earlier than in 1952. In kolkhozes of Ura-Tyubinskiy, Koktashskiy, Mikoyanabadikiy, and other rayons, the yield of flax seed was 2.0-2.5 quintals per hectare greater than in 1952.(72)

- 28 -

CONFIDENTIAL

The following table shows percentage fulfillment of the 1953 plan for delivery of cotton to the state by rayons and sovkhoses of the republic:

Rayons	30 Sep (136)	1 Oct (137)	2 Oct (138)	3 Oct (139)	4 Oct (*)	5 Oct (140) fulfill Inc.	6 Oct (141)	7 Oct (142)	8 Oct (143)	9 Oct (144)	
Ashtskiy	38.3	39.3	39.9	40.2	41.2	42.7	1.5	43.6	44.3	45.1	45.8
Dangarinskiy	43.1	44.9	46.6	47.1	48.1	49.1	1.0	49.3	50.1	50.5	51.9
Dzhilikil'skiy	21.3	22.2	23.0	23.7	24.5	25.3	0.8	26.0	26.8	27.5	28.3
Gissarskiy	21.0	22.7	23.5	23.6	24.3	25.6	1.3	26.2	27.4	29.0	30.4
Isfarskiy	14.2	15.5	16.5	17.0	18.5	19.8	1.3	20.7	22.1	23.4	24.8
Kaganovichabadskiy	21.6	22.6	23.3	24.2	25.2	26.0	0.8	27.0	28.0	28.9	29.9
Kanibadamskiy	39.3	40.8	41.5	42.5	43.7	44.9	1.2	46.0	47.0	48.1	49.2
Kirovabadskiy	27.6	28.9	30.0	30.6	31.5	32.5	1.0	33.0	33.7	34.8	35.7
Koktashskiy	22.3	24.0	25.0	25.0	25.4	26.0	0.6	26.0	26.9	28.3	29.5
Kulyabskiy	43.5	45.1	46.6	47.1	48.2	49.3	1.1	49.5	50.5	51.8	53.2
Kurgan-Tyubinskiy	25.3	26.6	27.4	28.6	29.7	30.7	1.0	31.8	32.7	33.7	34.6
Kuybyshevskiy	23.5	24.4	25.3	26.1	27.0	28.0	1.0	28.8	29.7	30.6	31.3
Kryl-Mazarskiy	52.2	54.1	55.7	56.1	57.3	58.6	1.3	58.6	59.4	61.0	62.6
Leninabadskiy	31.8	33.2	33.9	34.3	35.3	36.4	1.1	37.2	38.2	39.5	40.7
Mikoyanabadskiy	31.9	33.0	33.8	34.9	35.9	37.0	1.1	37.9	38.8	39.8	40.8
Molotovabadskiy	26.7	27.7	28.6	29.3	30.1	31.0	0.9	31.6	32.6	33.6	34.6
Moskovskiy	42.6	44.2	45.5	46.1	46.9	47.6	0.7	48.8	49.8	50.9	51.9
Mauskiy	32.1	33.7	33.9	34.5	35.2	36.2	1.0	36.9	38.0	39.4	40.9
Oktyabr'skiy	28.3	29.3	29.8	31.0	31.6	32.7	0.9	33.3	34.4	35.2	36.0
Ordzhonikidzeabadskiy	26.0	28.2	29.1	29.3	30.1	31.0	0.9	31.0	32.0	33.4	35.2
Parkharskiy	38.8	40.0	41.2	42.0	43.0	43.9	0.9	44.3	45.2	46.2	47.3
Proletarskiy	33.6	35.2	35.6	36.1	36.8	37.6	0.8	38.6	40.0	41.9	43.7
Regarskiy	27.3	28.8	29.3	29.7	30.5	31.6	1.1	32.2	33.3	34.8	36.4
Spartuzskiy	27.3	28.3	29.0	29.8	30.6	31.4	0.8	32.0	32.7	33.5	34.2
Shakhrinskiy	21.8	23.2	23.3	23.5	24.1	25.1	1.0	25.7	27.0	28.5	30.1
Shuroabadskiy	44.9	44.9	46.2	47.5	48.8	48.8	0.0	48.8	48.8	48.8	48.8
Stalinabadskiy	22.0	23.5	24.5	24.6	25.0	25.9	0.9	26.0	27.0	28.6	30.3
<b>Sovkhoses</b>											
Imeni Kirov	31.6	32.8	33.5	33.9	34.8	35.2	0.4	35.7	36.7	38.1	40.0
Imeni Kuybyshev	32.5	33.9	35.1	36.2	37.2	38.2	1.0	38.9	39.9	40.9	42.0
Kafirnigan	16.0	16.7	17.1	17.8	18.7	19.6	0.9	20.0	20.7	21.1	21.6
Miten-Tugay	20.8	21.7	22.0	22.4	23.5	23.9	0.4	23.9	24.6	25.5	26.2
Stalinsabadskiy	19.9	21.3	22.0	22.0	22.6	22.8	0.2	23.3	24.3	25.1	26.4

CONFIDENTIAL

CONFIDENTIAL

50X1-HUM

Regions	11 Oct (*)	12 Oct (145)		13 Oct (146)	14 Oct (147)	15 Oct (148)	16 Oct (149)	17 Oct (150)	18 Oct (*)	19 Oct (151)		20 Oct (152)
		Fulfill	Incr							Fulfill	Incr	
Ashtskiy	47.1	47.5	0.4	47.8	48.3	48.5	48.9	49.5	50.7	50.9	0.2	51.7
Dangarinskiy	55.1	56.2	1.1	56.4	56.7	56.9	57.2	58.0	58.8	59.8	1.0	60.9
Dzhilikul'skiy	29.7	30.5	0.8	31.2	31.5	32.4	33.2	34.1	35.0	35.9	0.9	36.3
Glyssarskiy	33.5	35.0	1.5	35.8	36.0	36.3	36.6	37.5	38.8	40.6	1.8	42.3
Leferinskiy	27.6	28.9	1.3	29.0	29.8	30.5	31.1	32.1	33.5	35.1	1.6	36.8
Kaganovichabadskiy	31.7	32.6	0.9	33.4	33.9	34.9	35.8	36.8	37.7	38.6	0.9	39.6
Leningradskiy	51.2	52.4	1.2	52.7	53.4	53.6	54.3	55.1	56.1	57.1	1.0	58.2
Kirovabadskiy	37.5	38.6	1.1	38.8	38.9	39.6	40.6	41.9	43.0	44.1	1.1	45.0
Kokchetavskiy	33.2	35.2	2.0	36.0	36.3	36.4	36.7	37.5	39.1	40.9	1.8	42.5
Kolyvanskiy	56.2	57.8	1.6	58.1	58.4	59.0	59.4	60.1	61.0	62.2	1.2	63.5
Kungen-Tyubinskiy	36.4	37.5	1.1	38.5	39.3	40.3	41.1	42.0	42.8	43.6	0.8	44.5
Kuzbyshevskiy	33.1	33.9	0.8	34.8	35.2	36.0	36.9	37.8	38.5	39.5	1.0	40.3
Kyrl-Lazarskiy	65.1	66.3	1.2	66.8	66.8	66.9	67.8	68.4	70.1	71.3	1.2	72.6
Leningradskiy	43.5	44.6	1.1	45.1	45.8	46.2	46.4	46.9	47.7	48.9	1.2	50.1
Mikoyanabadskiy	42.7	43.6	0.9	44.8	45.3	46.3	47.3	48.3	49.2	50.2	1.0	51.2
Molotovabadskiy	36.4	37.4	1.0	38.3	38.9	39.4	40.2	41.3	42.2	43.3	1.1	44.1
Moskovskiy	54.1	55.0	0.9	55.3	55.3	56.1	56.5	57.0	57.5	58.6	1.1	59.9
Nauškiy	44.0	45.2	1.2	45.8	46.5	46.6	46.8	47.0	47.8	49.1	1.3	50.5
Ordzhonikidzeabadskiy	37.6	38.4	0.8	39.4	40.1	40.9	41.8	42.6	43.4	44.2	0.8	45.1
Ordzhonikidzeabadskiy	40.3	42.3	1.9	43.1	43.3	43.4	43.4	44.1	45.3	47.8	2.5	49.6
Parikhar'skiy	49.3	50.2	0.9	50.4	50.4	50.9	51.4	52.2	53.1	54.1	1.0	54.9
Proletarskiy	46.8	48.0	1.2	48.4	49.0	49.1	49.3	50.0	51.2	52.8	1.6	54.3
Pegarskiy	39.6	41.2	1.6	42.4	43.1	44.0	45.3	46.8	48.3	49.7	1.4	51.1
Shaartuzskiy	35.8	36.7	0.9	37.4	37.9	38.5	39.3	40.1	40.9	41.6	0.7	42.4
Shakhtinskoy	33.2	34.7	1.5	35.3	35.6	35.9	36.6	38.0	39.6	41.3	1.7	42.8
Shirabadskiy	49.4	52.0	2.6	52.6	52.6	52.6	53.9	62.9	62.9	65.4	2.5	68.0
Stalinabadskiy	33.1	35.0	1.9	35.7	35.8	35.9	36.0	36.8	38.3	40.1	1.8	41.9
<b>Soyuzhozes</b>												
Imeni Kirov	42.5	43.7	1.2	44.6	45.0	45.5	46.6	47.4	48.2	48.9	0.7	49.5
Imeni Kuybyshev	44.4	45.8	1.4	46.5	47.1	47.7	48.5	49.4	50.3	51.2	0.9	51.8
Kafirnigoy	22.2	22.5	0.3	23.1	23.6	23.8	24.0	24.0	24.5	25.3	0.8	25.8
Miten-Tugay	28.5	28.9	0.4	28.9	28.9	29.3	29.6	30.2	30.8	31.8	1.0	32.9
Stalinabadskiy	29.0	30.2	1.2	30.8	30.8	30.8	31.4	32.3	33.8	35.1	1.3	37.3

CONFIDENTIAL

- 30 -

CONFIDENTIAL

50X1-HUM

Rayons	21 Oct (153)	22 Oct (154)	23 Oct (155)	24 Oct (156)	25 Oct (*)	26 Oct (157)		28 Oct (*)	29 Oct (158)		30 Oct (159)
						Fulfill	Incr		Fulfill	Incr	
Ashtskiy	52.6	53.4	54.3	55.2	55.9	56.2	0.3	56.6	57.3	0.7	58.1
Dangerinskiy	61.9	63.0	64.2	65.5	66.3	66.3	0.0	66.3	66.3	0.0	66.3
Dzhilikaul'skiy	37.8	38.6	39.4	40.3	41.1	41.5	0.4	41.7	42.1	0.4	42.8
Gissarskiy	43.9	45.9	48.0	50.0	52.0	52.0	0.0	52.3	52.8	0.5	53.6
Isfariyskiy	38.3	39.5	40.4	42.2	44.4	45.5	1.1	46.2	47.5	1.3	49.4
Kaganovichabadskiy	40.5	41.4	42.4	43.4	44.3	44.7	0.4	45.0	45.6	0.6	46.3
Kanibadskiy	59.3	60.2	60.8	62.0	62.0	63.0	1.0	63.4	64.1	0.7	64.8
Kirovabadskiy	46.0	47.1	48.2	49.3	50.4	51.5	1.1	51.5	52.0	0.5	52.9
Koktashskiy	44.9	46.9	48.8	50.4	52.0	52.0	0.0	52.0	52.5	0.5	53.4
Kul'yabskiy	64.8	66.1	67.3	68.4	69.5	70.1	0.6	70.1	70.2	0.1	70.5
Kurgan-Tyubinskiy	45.4	46.4	47.4	48.4	49.4	49.9	0.5	50.1	50.5	0.4	51.3
Kuybyshevskiy	41.1	41.8	42.6	43.3	44.0	44.3	0.3	44.4	44.7	0.3	45.2
Kuzl-Mazarskiy	73.7	74.7	75.5	76.4	77.4	77.6	0.2	77.5	77.5	0.0	77.5
Leninabadskiy	51.3	52.3	53.3	54.2	55.3	55.7	0.4	55.8	56.2	0.4	56.8
Mikoyanabadskiy	52.2	53.3	54.3	55.3	56.3	56.9	0.6	57.3	57.8	0.5	58.6
Molotovabadskiy	45.1	46.1	47.1	48.0	49.1	49.9	0.8	50.4	50.5	0.1	50.7
Moskovskiy	61.0	61.9	62.8	63.6	64.4	65.0	0.6	65.0	65.0	0.0	65.0
Mauskiy	52.0	53.2	54.1	55.3	55.9	56.4	0.5	56.6	56.9	0.3	57.4
Okt'yabr'skiy	46.0	46.8	47.6	48.4	49.3	49.6	0.3	49.9	50.2	0.3	50.7
Ordchenikidzeabadskiy	55.0	55.8	56.7	57.5	58.0	58.2	0.2	58.2	59.1	0.9	59.6
Parfianskiy	55.8	56.5	57.2	57.9	58.0	62.3	0.3	62.3	62.8	0.5	63.5
Proletarskiy	55.5	56.7	57.6	58.8	59.7	60.1	0.4	60.5	60.8	0.3	61.5
Regarskiy	52.4	53.7	54.8	56.3	57.4	57.5	0.1	57.5	57.7	0.2	58.1
Shaartuzskiy	43.0	43.8	44.5	45.2	45.8	46.6	0.8	47.0	47.4	0.4	47.9
Shakhrineuskiy	44.6	46.3	48.0	49.5	50.9	50.9	0.0	51.3	51.7	0.4	52.3
Shuroabadskiy	68.0	68.0	68.0	68.0	70.6	60.6	0.0	70.6	70.6	0.0	70.6
Stalinabadskiy	43.5	45.4	47.7	49.7	51.8	51.9	0.1	52.1	52.6	0.5	53.8
<b>Sovkhoses</b>											
Imeni Kirov	50.4	51.0	51.7	52.4	52.7	53.1	0.4	53.1	53.1	0.0	53.5
Imeni Kuybyshev	52.6	53.4	54.2	54.9	55.6	55.8	0.2	55.8	55.9	0.1	56.0
Kafirnigan	26.0	26.7	27.1	27.6	28.0	28.0	0.0	28.5	28.7	0.2	28.7
Miten-Tugey	33.3	34.3	35.5	36.2	37.8	37.8	0.0	37.8	37.8	0.0	37.8
Stalinabadskiy	39.1	40.7	42.8	44.2	46.8	46.8	0.0	46.8	47.7	0.9	49.9

CONFIDENTIAL

CONFIDENTIAL

50X1-HUM

CONFIDENTIAL

50X1-HUM

Kirgiz SSR

The following table shows percentage fulfillment of the 1953 plan for cotton procurement by oblasts of the republic. Data for some days (\*), for which no reports were published in the press, were derived by deducting the following day's increment (Incr) from total fulfillment (Fulfill) as of that day:

<u>Oblasts</u>	<u>30 Sep (160)</u>		<u>1 Oct (*)</u>		<u>2 Oct (161)</u>		<u>3 Oct (162)</u>		<u>4 Oct (*)</u>	
	<u>Fulfill</u>	<u>Incr</u>	<u>Fulfill</u>	<u>Incr</u>	<u>Fulfill</u>	<u>Incr</u>	<u>Fulfill</u>	<u>Incr</u>	<u>Fulfill</u>	<u>Incr</u>
Dzhalal-Abadskaya	36.34		38.26		39.20	0.94	39.85		41.37	
Frunzenskaya	43.25		46.50		46.82	0.32	49.06		50.69	
Oshskaya	24.38		26.10		26.89	0.79	28.06		29.72	
	<u>5 Oct (163)</u>		<u>7 Oct (*)</u>		<u>8 Oct (164)</u>		<u>9 Oct (165)</u>		<u>10 Oct (166)</u>	
	<u>Fulfill</u>	<u>Incr</u>	<u>Fulfill</u>	<u>Incr</u>	<u>Fulfill</u>	<u>Incr</u>	<u>Fulfill</u>	<u>Incr</u>	<u>Fulfill</u>	<u>Incr</u>
Dzhalal-Abadskaya	43.33	1.96	45.30		47.03	1.73	48.94		50.73	
Frunzenskaya	52.51	1.82	56.10		58.83	2.73	63.61		68.38	
Oshskaya	31.86	2.14	34.48		36.31	1.83	38.36		40.36	
	<u>11 Oct (*)</u>		<u>12 Oct (167)</u>		<u>16 Oct (*)</u>		<u>17 Oct (168)</u>		<u>18 Oct (*)</u>	
	<u>Fulfill</u>	<u>Incr</u>	<u>Fulfill</u>	<u>Incr</u>	<u>Fulfill</u>	<u>Incr</u>	<u>Fulfill</u>	<u>Incr</u>	<u>Fulfill</u>	<u>Incr</u>
Dzhalal-Abadskaya	52.49		53.36	0.87	54.59		54.98	0.39	55.65	
Frunzenskaya	73.33		77.33	4.00	80.25		80.94	0.69	82.58	
Oshskaya	42.37		43.91	1.54	45.28		45.72	0.44	46.48	
	<u>19 Oct (169)</u>		<u>20 Oct (170)</u>		<u>21 Oct (*)</u>		<u>22 Oct (171)</u>		<u>23 Oct (172)</u>	
	<u>Fulfill</u>	<u>Incr</u>	<u>Fulfill</u>	<u>Incr</u>	<u>Fulfill</u>	<u>Incr</u>	<u>Fulfill</u>	<u>Incr</u>	<u>Fulfill</u>	<u>Incr</u>
Dzhalal-Abadskaya	56.87	1.22	58.25		59.77		60.84	1.07	61.58	
Frunzenskaya	83.78	1.20	85.55		88.01		89.41	1.40	91.21	
Oshskaya	47.79	1.31	49.20		51.05		52.01	0.96	53.06	
	<u>24 Oct (173)</u>		<u>27 Oct (*)</u>		<u>28 Oct (174)</u>		<u>29 Oct (175)</u>		<u>30 Oct (176)</u>	
	<u>Fulfill</u>	<u>Incr</u>	<u>Fulfill</u>	<u>Incr</u>	<u>Fulfill</u>	<u>Incr</u>	<u>Fulfill</u>	<u>Incr</u>	<u>Fulfill</u>	<u>Incr</u>
Dzhalal-Abadskaya	63.24		65.30		65.56	0.26	66.08		66.48	
Frunzenskaya	93.08		95.45		95.45	0.00	96.45		97.31	
Oshskaya	54.66		57.25		58.00	0.75	58.80		59.59	

- 32 -

CONFIDENTIAL



The following table shows percentage fulfillment of the 1953 plan for cotton procurement by rayons and in the Otuz-Adyr Sovkhoz of the republic:

Rayons	1 Oct (177)	6 Oct (178)	11 Oct (179)	16 Oct (180)	21 Oct (181)	26 Oct (182)
Ala-Bukinskiy	23.87	28.75	40.82	46.20	49.82	63.02
Arevanskiy	41.72	52.74	64.99	67.97	75.10	81.72
Batkenskiy	13.37	21.28	31.06	38.49	44.89	52.80
Bazar-Kurganskiy	40.82	46.07	54.10	55.57	60.93	66.68
Francenskiy	27.65	34.83	43.40	45.74	53.4	60.25
Laganovichskiy	74.93	83.48	108.75	114.79	119.95	125.60
Kalininskiy	32.43	37.29	54.51	62.00	69.14	77.79
Karasuyskiy	30.17	37.90	48.08	51.18	58.19	64.59
Kurskabskiy	18.22	20.90	26.83	28.88	33.15	36.77
Kyzyl-Askerskiy	67.58	73.28	95.84	102.18	105.52	113.28
Leninskiy	46.74	53.51	62.75	64.48	69.46	74.62
Lyeilyakskiy	55.00	61.30	86.30	90.00	90.00	—
Mirzaskinskiy	12.17	13.63	22.37	24.84	29.71	36.49
Molotovskiy	16.29	21.16	27.56	29.40	33.57	37.67
Oktyabr'skiy	28.22	32.74	40.74	42.94	47.28	52.77
Oshskiy	22.25	29.44	39.80	43.35	49.01	55.82
Petrovskiy	25.72	30.50	45.64	50.03	59.97	67.16
Stalinskiy	43.41	52.81	77.42	87.58	101.40	108.49
Suzakskiy	37.85	43.66	51.85	54.08	59.86	65.35
Toktogil'skiy	20.59	25.74	32.91	35.64	39.92	43.16
Tuleyken'skiy	19.23	24.75	32.26	34.88	39.72	45.38
Uch-Terek'skiy	16.94	21.21	28.34	32.70	37.32	41.21
Uzgenskiy	18.90	21.64	29.22	32.01	35.67	41.31
Yengi-Naukatskiy	25.52	30.96	38.52	40.15	46.54	52.72
<b>Sovkhoz</b>						
Otuz-Adyr	8.17	11.77	14.19	16.39	18.08	21.74

CONFIDENTIAL

- 33 -

CONFIDENTIAL

50X1-HUM

50X1-HUM

CONFIDENTIAL

The total capacity of the tractor parks in MTS of the Kirgiz SSR had increased 44.5 percent by 1953 as compared with the prewar period, while the number of combines had increased 62.1 percent. The capacity of caterpillar diesel tractors was 15 times as great in 1953 as before the war; the volume of work performed by MTS in kolkhozes of the republic was 71 percent greater.

Productivity of tractors remained low, however. In 1952, for example, output per shift per 15-horsepower tractor in the republic was only 2.7 hectares of conventional plowing.<sup>(183)</sup>

## SOURCES

1. Moscow, Sel'skoye Khozyaystvo, 6 Oct 53
2. Petrozavodsk, Leninskoye Znamya, 22 Oct 53
3. Sel'skoye Khozyaystvo, 18 Oct 53
4. Ibid., 9 Oct 53
5. Kishinev, Sovetskaya Moldaviya, 10 Oct 53
6. Tbilisi, Zarya Vostoka, 30 Oct 53
7. Baku, Bakinskiy Rabochiy, 7 Oct 53
8. Riga, Sovetskaya Latvija, 2 Oct 53
9. Minsk, Sovetskaya Belorussiya, 23 Oct 53
10. Kiev, Pravda Ukrainy, 8 Oct 53
11. Tashkent, Pravda Vostoka, 1 Oct 53
12. Sovetskaya Latvija, 3 Oct 53
13. Moscow, Izvestiya, 18 Oct 53
14. Sel'skoye Khozyaystvo, 24 Oct 53
15. Ibid., 1 Oct 53
16. Leninskoye Znamya, 3 Oct 53
17. Ibid., 8 Oct 53
18. Ibid., 14 Oct 53
19. Ibid., 18 Oct 53
20. Ibid., 24 Oct 53
21. Ibid., 28 Oct 53
22. Sel'skoye Khozyaystvo, 10 Oct 53
23. Ibid., 29 Oct 53
24. Moscow, Komsomol'skaya Pravda, 18 Oct 53
25. Vil'nyus, Sovetskaya Litva, 2 Oct 53
26. Sovetskaya Belorussiya, 17 Oct 53
27. Ibid., 20 Oct 53
28. Ibid., 22 Oct 53
29. Ibid., 3 Oct 53
30. Ibid., 8 Oct 53
31. Ibid., 14 Oct 53
32. Ibid., 18 Oct 53
33. Ibid., 24 Oct 53
34. Pravda Ukrainy, 20 Oct 53
35. Sel'skoye Khozyaystvo, 8 Oct 53
36. Ibid., 14 Oct 53

- 34 -

CONFIDENTIAL

CONFIDENTIAL

50X1-HUM

37. Pravda Ukrainy, 22 Oct 53
38. Moscow, Pravda, 3 Oct 53
39. Pravda Ukrainy, 13 Oct 53
40. Ibid., 18 Oct 53
41. Ibid., 23 Oct 53
42. Ibid., 28 Oct 53
43. Sovetskaya Moldaviya, 8 Oct 53
44. Ibid., 13 Oct 53
45. Ibid., 18 Oct 53
46. Ibid., 23 Oct 53
47. Ibid., 28 Oct 53
48. Zarya Vostoka, 31 Oct 53
49. Yerevan, Kommunist, 4 Oct 53
50. Ibid., 2 Oct 53
51. Ibid., 18 Oct 53
52. Ibid., 20 Oct 53
53. Bakinskiy Rabochiy, 27 Oct 53
54. Izvestiya, 4 Oct 53
55. Baku, Kommunist (in Azerbaijani), 8 Oct 53
56. Bakinskiy Rabochiy, 1 Oct 53
57. Ibid., 2 Oct 53
58. Ibid., 3 Oct 53
59. Ibid., 4 Oct 53
60. Ibid., 6 Oct 53
61. Ibid., 9 Oct 53
62. Ibid., 10 Oct 53
63. Ibid., 11 Oct 53
64. Ibid., 13 Oct 53
65. Ibid., 14 Oct 53
66. Ibid., 15 Oct 53
67. Ibid., 16 Oct 53
68. Ibid., 17 Oct 53
69. Ibid., 18 Oct 53
70. Ibid., 20 Oct 53
71. Leningradskaya Pravda, 7 Oct 53
72. Sel'skoye Khozyaystvo, 23 Oct 53
73. Leninskoye Znanya, 6 Oct 53
74. Pravda, 31 Oct 53
75. Moscow, Sovetskaya Torgovlya, No 10, 1953
76. Izvestiya, 6 Oct 53
77. Pravda, 10 Oct 53
78. Sel'skoye Khozyaystvo, 22 Oct 53
79. Ibid., 31 Oct 53
80. Ibid., 16 Oct 53
81. Ibid., 25 Oct 53
82. Ibid., 30 Oct 53
83. Alma-Ata, Kazakhstanskaya Pravda, 8 Oct 53
84. Ibid., 6 Oct 53
85. Pravda Vostoka, 2 Oct 53
86. Ibid., 3 Oct 53
87. Ibid., 4 Oct 53
88. Ibid., 6 Oct 53
89. Ibid., 7 Oct 53
90. Ibid., 8 Oct 53
91. Ibid., 9 Oct 53
92. Ibid., 10 Oct 53
93. Ibid., 11 Oct 53

- 35 -

CONFIDENTIAL

CONFIDENTIAL

50X1-HUM

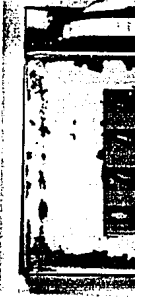
- 94. Pravda Vostoka, 12 Oct 53
- 95. Ibid., 13 Oct 53
- 96. Ibid., 14 Oct 53
- 97. Ibid., 16 Oct 53
- 98. Ibid., 17 Oct 53
- 99. Ibid., 18 Oct 53
- 100. Ibid., 20 Oct 53
- 101. Ibid., 21 Oct 53
- 102. Ibid., 22 Oct 53
- 103. Ibid., 23 Oct 53
- 104. Ibid., 24 Oct 53
- 105. Ibid., 25 Oct 53
- 106. Ibid., 27 Oct 53
- 107. Ibid., 28 Oct 53
- 108. Ibid., 29 Oct 53
- 109. Ibid., 30 Oct 53
- 110. Ibid., 31 Oct 53
- 111. Tashkent, Kizil Uzbekistan (in Uzbek), 25 Oct 53
- 112. Ashkhabad, Turkmenskaya Iskra, 1 Oct 53
- 113. Ibid., 2 Oct 53
- 114. Ibid., 3 Oct 53
- 115. Ibid., 4 Oct 53
- 116. Ibid., 6 Oct 53
- 117. Ibid., 7 Oct 53
- 118. Ibid., 8 Oct 53
- 119. Ibid., 9 Oct 53
- 120. Ibid., 10 Oct 53
- 121. Ibid., 13 Oct 53
- 122. Ibid., 14 Oct 53
- 123. Ibid., 15 Oct 53
- 124. Ibid., 16 Oct 53
- 125. Ibid., 17 Oct 53
- 126. Ibid., 18 Oct 53
- 127. Ibid., 20 Oct 53
- 128. Ibid., 22 Oct 53
- 129. Ibid., 23 Oct 53
- 130. Ibid., 24 Oct 53
- 131. Ibid., 27 Oct 53
- 132. Ibid., 28 Oct 53
- 133. Ibid., 29 Oct 53
- 134. Ibid., 30 Oct 53
- 135. Ibid., 31 Oct 53
- 136. Stalinabad, Kommunist Tadzhikistana, 1 Oct 53
- 137. Ibid., 2 Oct 53
- 138. Ibid., 3 Oct 53
- 139. Ibid., 4 Oct 53
- 140. Ibid., 6 Oct 53
- 141. Ibid., 7 Oct 53
- 142. Ibid., 8 Oct 53
- 143. Ibid., 9 Oct 53
- 144. Ibid., 10 Oct 53
- 145. Ibid., 13 Oct 53
- 146. Ibid., 14 Oct 53
- 147. Ibid., 15 Oct 53
- 148. Ibid., 16 Oct 53
- 149. Ibid., 17 Oct 53
- 150. Ibid., 18 Oct 53

CONFIDENTIAL

CONFIDENTIAL

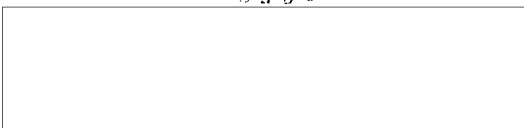


50X1-HUM



- 151. Kommunist Tadzhikistana, 20 Oct 53
- 152. Ibid., 21 Oct 53
- 153. Ibid., 22 Oct 53
- 154. Ibid., 23 Oct 53
- 155. Ibid., 24 Oct 53
- 156. Ibid., 25 Oct 53
- 157. Ibid., 27 Oct 53
- 158. Ibid., 30 Oct 53
- 159. Ibid., 31 Oct 53
- 160. Frunzo, Sovetskaya Kirgiziya, 1 Oct 53
- 161. Ibid., 3 Oct 53
- 162. Ibid., 4 Oct 53
- 163. Ibid., 6 Oct 53
- 164. Ibid., 9 Oct 53
- 165. Ibid., 10 Oct 53
- 166. Ibid., 11 Oct 53
- 167. Ibid., 13 Oct 53
- 168. Ibid., 18 Oct 53
- 169. Ibid., 20 Oct 53
- 170. Ibid., 21 Oct 53
- 171. Ibid., 23 Oct 53
- 172. Ibid., 24 Oct 53
- 173. Ibid., 25 Oct 53
- 174. Ibid., 29 Oct 53
- 175. Ibid., 30 Oct 53
- 176. Ibid., 31 Oct 53
- 177. Ibid., 2 Oct 53
- 178. Ibid., 7 Oct 53
- 179. Ibid., 14 Oct 53
- 180. Ibid., 17 Oct 53
- 181. Ibid., 22 Oct 53
- 182. Ibid., 28 Oct 53
- 183. Sel'skoye Khozyaystvo, 11 Oct 53

- E N D -



50X1-HUM

- 37 -

CONFIDENTIAL

50X1-HUM

**Page Denied**