

NAR 155 MAR 1952 51-4C

CLASSIFICATION: SECRET
CENTRAL INTELLIGENCE AGENCY
INFORMATION FROM
FOREIGN DOCUMENTS OR RADIO BROADCASTS
NO. []

25X1A

COUNTRY: Czechoslovakia
SUBJECT: Political Party Communist discipline

DATE OF INFORMATION: 1952

HOW PUBLISHED: Semimonthly periodical

DATE: 27 Feb 1953

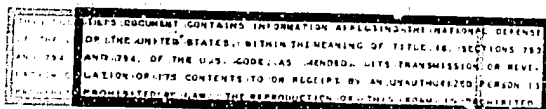
WHERE PUBLISHED: Prague

NO. OF PAGES: 2

DATE PUBLISHED: 28 Feb 1952

SUPPLEMENT TO REPORT NO.

LANGUAGE: Czech



THIS IS UNEVALUATED INFORMATION

SOURCE: Funkcionary, Vol VII, No 4, 1952.

CONFORMITY TO PARTY DISCIPLINE IN CZECHOSLOVAKIA

Bedřich Kozelka
Assistant Secretary of Kraj Committee
Communist Party of Czechoslovakia, Prague

From President Gottwald, speaking at a meeting of the Central Committee of the Communist Party of Czechoslovakia on 6 December 1951, said: "The Communist Party is a single unit from top to bottom. There can be no disputes between Communists in the party leadership and Communists in other sectors of public life. There may be no differences of opinion between the party leadership and the primary party organizations, or the mass of the membership." He concluded: "One must not use the main weapon of the class enemy against the party, i.e. sow distrust between the membership and the leadership and to destroy party discipline."

One of the most recent examples of how the class enemy tries to destroy the ideological and political unity of the party occurred after the decision of the party and government regarding the extra Christmas ration. It became clear that some certain party officials still cannot reach a decision and take a stand quickly and effectively. Some comrades, although they know that this was a decision of the government and, above all, of the party, did not know how to explain this measure to the workers and how to defend it as absolutely correct and just. They were indecisive, they failed to explain and to convince, and confirmed that where the party does not work, the class enemy does. The leadership was taken over entirely by former reactionary lawyers, former businessmen, etc., and by persons who were transferred to production under "Program 77."

The ideological uncertainty and the lack of preparation of some members were even more evident in the case of the supply situation. These people became lost in detail and in individual cases, and failed to see the main goal of these measures. They dragged their feet, waited for intervention from "above," and counted on being able to get away with departures from principles. The situation developed according to the whims of individuals instead of the actual meaning of the new measures, which should have been understood, presented, explained, and clarified.



25X1A

25X1A

Some Some individual members and officials not only fail to defend and implement the decisions of the party and government, but in some instances oppose these these decisions. This is sheer deviationism and obstructionism. For example, some some officials of the party organization at the Kable plant in Kladno not only failed failed to take steps against improper attitudes toward the supply measures, but identified themselves directly with these attitudes and thus helped the class enemy in the plant sabotage the party and undermine its influence with the workers. In the future the party cannot and must not permit or tolerate any party party members failure to defend or to implement the party line, much less his opposition to the party line.

Many Many party members think that all they need do is to pay their membership dues, dues attend meetings and listen to reports of the party; however, requires that all all members in addition to these basic duties conscientiously carry out the tasks assigned to them by the primary and higher organizations of the party, disseminate its ideology, and explain and defend its policies."

During During the third year of the RSS (Rok Stranicko Skoleni, Year of Party Training) only two or three comrades showed up for the party training course in the factory organization of the TOS (Tovarna na Obrabedi Strojev, Machine Tool Factory) in Rakovnik. The course was not held because of the poor attendance. Instead of concerning itself with the poor response, and instead of pointing out clearly to all party members that failure to attend the course was a violation of party discipline, the committee of the factory organization attempted to conceal this shortcoming from the district committee by reporting false figures on the attendance for the RSS. This is not an isolated occurrence.

Recent Recently the Zbrejav city party committee adopted an important decision on expanding work in the local plant and assigned the Communists in the local local national committee to convince the other party members of the propriety of this this decision. However, because the decision involved interfering with the private state interests of property owners, some members of the council felt that the matter should be referred to higher agencies, while others urged that the decision be set aside. This lack of discipline resulted in a considerable loss to the the economy and Communist may not waver before the clear decision of an elected agency.

From President Gottwald, at the aforementioned meeting of the Central Committee, said, said, "We cannot expect that the leadership's decision will in every case please each each party member. The party leadership must always stand in all circumstances, lead lead the party and make the necessary decisions. A Communist never believes blindly. But, if he has a healthy class instinct, if he is armed with a minimum of Leninist-Stalinist theory and a minimum of ability to apply it, in a given situation, he will never hesitate to defend and fulfill the decisions of the leadership of the party, even if these decisions were not discussed with him in advance."

E N D -

- 2 -

RESTRICTED