

CENTRAL INTELLIGENCE AGENCY
INFORMATION REPORT

REPORT

CD NO.

COUNTRY

East Germany

DATE COVERED 22 March 1954

SUBJECT

Rail Freight Traffic Through West German
Border Stations

NO OF PAGES 6

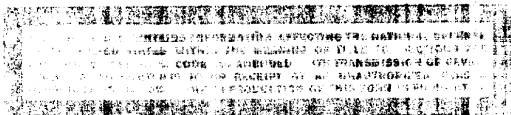
PLACE
ACQUIRED



NO OF ENCLS
(LISTED BELOW)

DATE OF
INFO

SUPPLEMENT TO REPORT NO 25X1



THIS IS UNEVALUATED INFORMATION



BEST COPY

Available

SECRET/CONTROL - U.S. OFFICIALS ONLY

25X1

-2-

Date in December	Frankfurt/Oder		Kuestrin	
	Number of Trains	Cars	Number of Trains	Cars
16	11	436	8	422
17	11	419	8	401
18	11	440	9	459
19	8	289	9	455

1

2. According to orders of the Soviet High Commission (SHC), the following trains were to be dispatched to the east in Frankfurt/Oder between 9 and 20 December:

Date in December	Composition of Trains	Assembled in
9 / 10	52 cars	Frankfurt/Oder
	54 "	"
	55 "	"
	46 "	Cottbus railroad district
	42 "	Frankfurt/Oder
	46 "	Dresden railroad district
	52 "	Halle railroad district
	2 trains of gondola cars	
10 / 11	50 cars	Cottbus railroad district
	56 "	Frankfurt/Oder
	54 "	"
	54 "	Halle railroad district
	45 "	Dresden railroad district
	1 train	
	2 trains of gondola cars	
11 / 12	44 cars	Frankfurt/Oder
	52 "	"
	50 "	"
	35 "	"
	37 "	"
	17 "	"
	8 "	"
	54 "	Halle railroad district
	54 "	Halle railroad district
12 / 13	54 cars	Berlin railroad district
	48 "	" "
	48 "	" "
	52 "	" "
	55 "	" "
	30 "	" "
	46 "	Dresden railroad district
	3 grain shuttle trains	
13 / 14	54 Cars	Frankfurt/Oder
	60 "	"
	43 "	"
	55 "	"
	53 "	"
	55 "	Halle railroad district
	54 "	" "
	46 "	Dresden railroad district
	3 grain shuttle trains	
	1 train of RRym type flatcars	

25X1

SECRET/CONTROL - U.S. OFFICIALS ONLY

SECRET/CONTROL - U.S. OFFICIALS ONLY

25X1

-4-

3. According to orders of the Soviet High Commission (SHC), the following trains were to be dispatched to the east in Kuestrin Kietz between 9 and 18 December:

Date in December	Number of Cars
9 / 10	57 cars
14/15	52
17 / 18	57

25X1

4. A motor vehicle shipment was announced to be dispatched from Frankfurt/Oder to Granienburg on 20 December. The shipments was consigned to the KVP.

5. The following shipments between 16 December 1953 and 1 January 1954:

25X1

B - boxcar
 F - flatcar
 RRym - heavy-duty flatcar
 T - taxi car

Date in December	Number and Type of Cars	From	To
16	21 T	Buna	Brest Litovsk
	29 cars	Halle	"
	15 F	Brandenburg	Apolda
17	45 B	Aue	Brest Litovsk
	44 cars	Flagwitz	"
18	21 B	Frankfurt/Oder	Kirchmoeser
	12 B	"	Koenigsborn
	58 cars	Magdeburg	Brest Litovsk
	31 "	"	"
19	44 "	Frankfurt/Oder	Riesa
	20 RRym	Riesa	Frankfurt/Oder
	33 cars	Flagwitz	Brest Litovsk
20	45 "	Aue	"
	52 T	Troglitz	Stettin
	42 T	"	"
	13 RRym	Leipzig	Brest Litovsk

25X1

SECRET/CONTROL - U.S. OFFICIALS ONLY

SECRET/CONTROL - U.S. OFFICIALS ONLY



25X1

-6-

1. Comment. As compared with the last reported period. Westbound traffic through Frankfurt/Oder rose from a daily average of 585 carloads to 592 carloads, while eastbound traffic dropped from 713 carloads to 484 carloads per day. Westbound traffic through Kuestrin Kieta decreased from 368 carloads to 296 carloads while eastbound traffic decreased from 437 carloads to 411 carloads per day.



3. Comment. An KVP distribution point for military equipment is located in Cranienburg.

4. Comment. these shipments consisted of uranium.

5. Comment. this train carried military supply goods. From index figure 55 it is inferred that the shipment consisted of motor vehicles.

6. Comment. This train carried ammunition. Index figure 146 is predominantly used for shipments consigned to the KVP.

7. Comment. Probably empty shells and packing material returned to the USSR.

SECRET/CONTROL - U.S. OFFICIALS ONLY

SECRET/CONTROL - U.S. OFFICIALS ONLY

-5-

Date in December	Number and Type of Cars	From	To
22	33 cars	Buna	Brest Litovsk
	15 "	Frankfurt/Oder	Kokrehna
	48 "	Dessau	Brest Litovsk
	25 "	Halle	"
	20 "	Bautzen	"
	39 T	Flagwitz	"
23	45 cars	undetermined	"
	39 T	Troeglitz	Stettin
24	53 cars	Strausberg	Kuestrin
	40 T	Grosskorbetha	Spandau
	28 T	Boehlen	Stettin
	20 RRym	Magdeburg	Brest Litovsk
	47 F	Wismar	"
	62 T	Troeglitz	Stettin
25	50 T	Grosskorbetha	Spandau
	32 cars	Flagwitz	Brest Litovsk
	46 B	Annaberg	"
	36 T	Boehlen	Stettin
26	45 cars, with ore	Stettin	Fuerstenberg
	57 "	"	"
27	55 cars	Flagwitz	Brest Litovsk
	45 B	Aue	"
29	45 cars	Magdeburg	"
30	20 "	Dessau	"
	45 "	Schwarzenberg	"
	45 "	Aue	"
	36 "	Jueterbog	"
31	22 "	Flagwitz	"
	26 T	Buna	"
1 January 1954	45 B	Schwarzenberg	"
	58 cars	Falkenberg	"
	55 T	Troeglitz	Stettin
	55 cars	Torgau	Brest Litovsk

SECRET/CONTROL - U.S. OFFICIALS ONLY