

CENTRAL INTELLIGENCE AGENCY

INFORMATION REPORT

This material contains information affecting the National Defense of the United States within the meaning of the Espionage Laws, Title 18, U.S.C. Secs. 793 and 794, the transmission or revelation of which in any manner to an unauthorized person is prohibited by law.

SECRET/CONTROL-U.S.OFFICIALS ONLY

COUNTRY	Czechoslovakia	REPORT		25X1
SUBJECT	Skoda Works Prague, Walter Plant near Zlicin	DATE DISTR.	23 August 1954	
DATE OF INFO.		NO. OF PAGES	9	
PLACE ACQUIRED		REQUIREMENT NO.	RD	25X1
		REFERENCES		638713

THE SOURCE EVALUATIONS IN THIS REPORT ARE DEFINITIVE.
THE APPRAISAL OF CONTENT IS TENTATIVE.
(FOR KEY SEE REVERSE)

25X1

- The Walter Plant of the Skoda Works (Skodovy zavody, nar. pod., zavod Walter) lies some 200 meters west of Zlicin on the south side of the Prague-Pilsen road. To the east are fields and some 300 meters further are small houses of Zlicin. In the south are week-end huts and beyond them fields; and in the west is a lane leading to the plant, which continues beyond the plant as an ordinary field lane. The plant is surrounded by a wire fence, 2½ meters high.
- Description: (The numbers refer to sketch no. 1, attached)
 - (No.4) Main building, in the southeastern corner of the plant, is of brick, about 10 meters high. Inside are workshops and offices.
 - (No.5) The gatekeeper's lodge is about 3 meters high, of brick. There are always two gatekeepers on guard.
 - (No.6) Storehouse for old parts, and one apartment, wooden, 3 meters in height. In the storehouse are parts of engines for motorcycles and of small engines to drive small generators which are no longer being produced.
 - (No.7) Storehouse for maintenance materials for the machines, located in a wooden building 3 meters high. It contains oil and liquids for making soapy water for cooling and cleaning rags.
 - (No.8) A transformer, on a steel frame, 8 meters high. A high-tension overhead power line runs here from the north.
 - (No.9) A water tank, in a wooden hut, 2 meters high, supplying the whole plant.
- There are 50 employees altogether, of whom four are women. No brigade workers or convicts work here.

SECRET/CONTROL-U.S.OFFICIALS ONLY

STATE	X	ARMY	X	NAVY	X	AIR	X	FBI		AEC		ORR Ev	X		
-------	---	------	---	------	---	-----	---	-----	--	-----	--	--------	---	--	--

(NOTE: Washington distribution indicated by "X"; Field distribution by "#".)

25X1

SECRET/CONTROL-U.S.OFFICIALS ONLY

- 2 -

4. Machinery in the main building consists of seven lathes, turning length 75 cm, to 3 meters; two vertical milling machines of medium type, older, Scheiner make; two drilling machines with joined arm of medium size, new, MAS make; two smaller and older horizontal milling machines; two large horizontal milling machines, one old, the other new, both TOS; one Russian slotting machine for production of teeth for the gear wheels, Komsomol make, new; one old American slotting machine; two older milling machines for gear wheels, Wollman and TOS makes; one external grinding machine (new); one older slotting machine; one older grinding machine with magnetic chuck; one newer small drilling machine; one hardening furnace, (oil-tank, 2 x 2 x 1 meter large to heat bearings); two hacksaws (older); three small older toll-grinding machines; one block for making the castings; one over-head travelling crane, on rails, capacity 5 tons.
5. Castings are brought here from the Skoda foundry at Horovice, steel rods from United Steel Works, Kladno (SONP).
6. The plant manufactures 200 reduction gear boxes for ships monthly. These are exported to the USSR. It also manufactures gear boxes of various types, according to orders. One kind of these is also used for ships. The plant sometimes manufactures aluminum gear boxes for the Tatra Works, in series of about 10 at a time.
7. The reduction gear boxes are exported direct to Russia. One kind of gear box is sent to the Komar shipyards in Slovakia. Other deliveries were not known to Informant.
8. There is a shortage of bearings, especially of roller bearings, and many finished products are returned with broken bearings. The plant has some 5% rejects.
9. The plan is constantly being fulfilled over 100%.
10. The works manager is Jan Janata
-
- There are no Russians at the plant.
11. Two gatekeepers guard the plant with a dog.
12. Morale is poor; workers are dissatisfied with the constant increase of norms. There is no political education in this plant.

25X1

25X1

1. Comment. The Prague telephone book 1952 lists two Walter branch plants (pobocny zavod Walter) under the Skoda Works Prague, National Enterprise (Skodovy zavody Praha, narodni podnik) of Prague-Smichov. One of these is the Walter Branch Plant at Prague-Kosice (or Prague-Jinonice), which has since been renamed the Jan Sverma Plant of Motorlet, National Enterprise . The other is the Walter Branch Plant at Zlicin (or Zlejcín-N51/L68) near Prague.

25X1

25X1

25X1

25X1

SECRET/CONTROL - - U. S. OFFICIALS ONLY

25X1

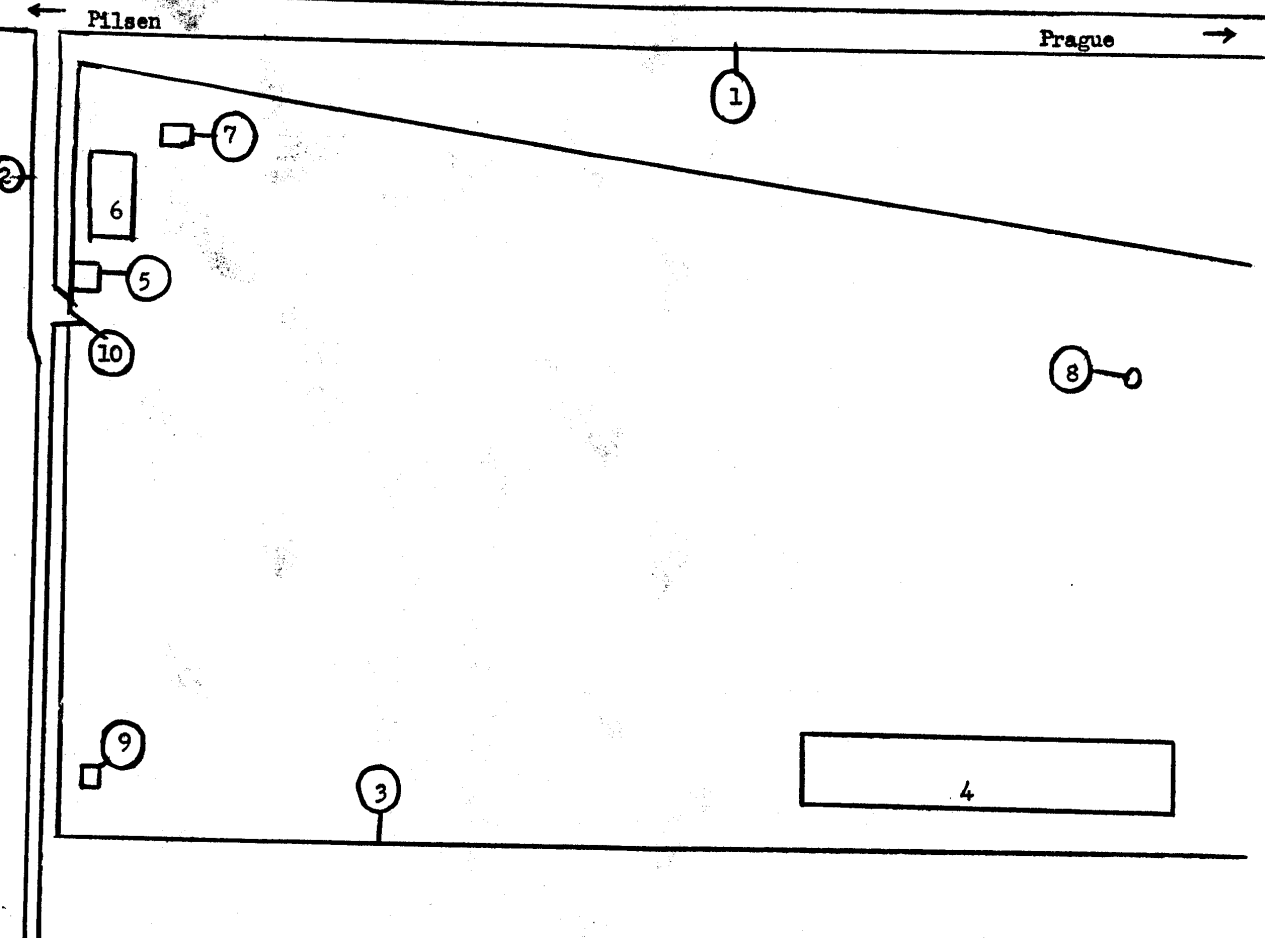
SECRET/CONTROL-U.S.OFFICIALS ONLY

- 3 -



Skoda Works - Walter Plant in Zlicin

Sketch 1



Scale: 1:1000

SECRET/CONTROL-U.S.OFFICIALS ONLY

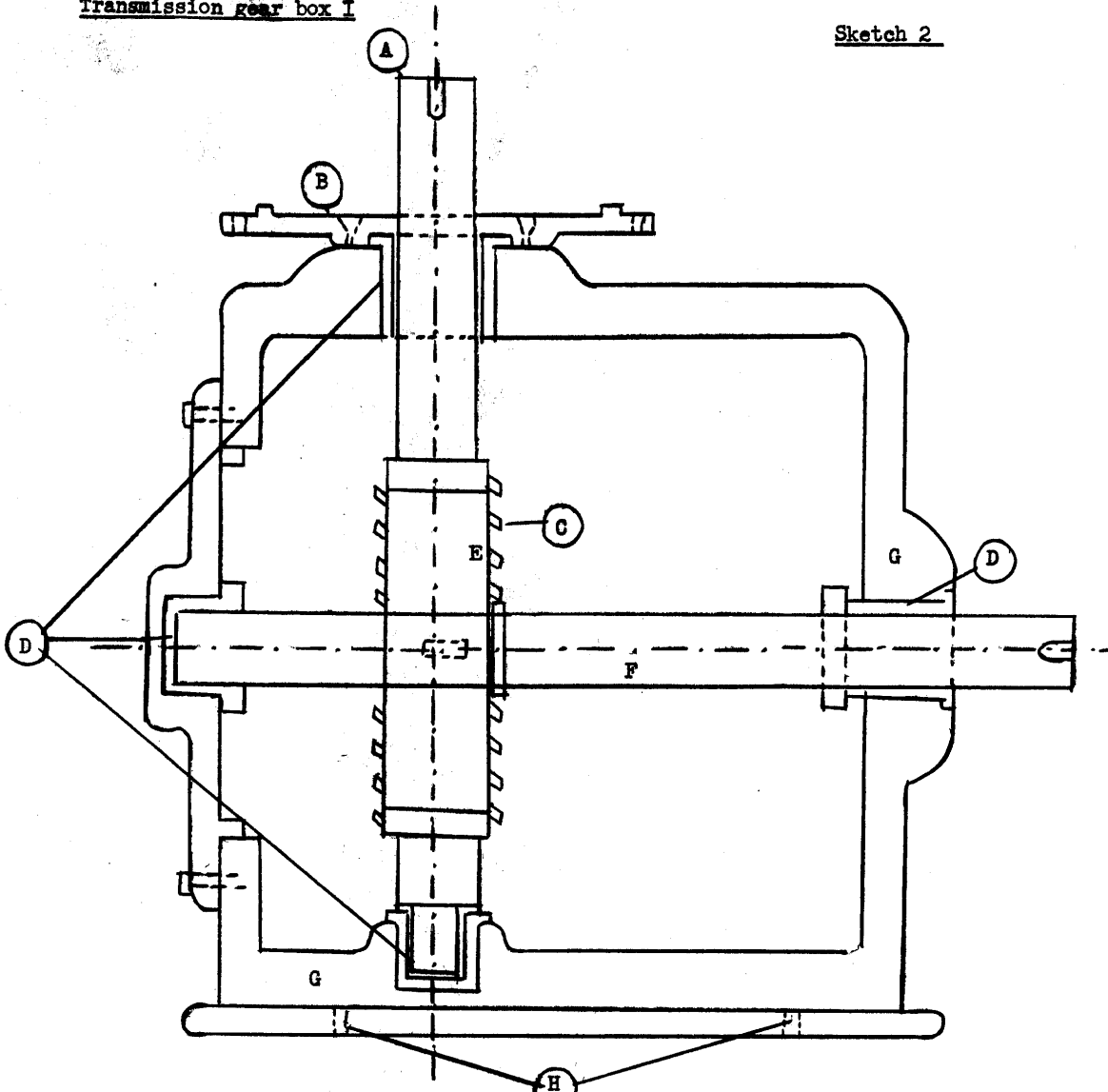
25X1

SECRET/CONTROL-U.S.OFFICIALS ONLY

- 4 -

Description of the Gear Box I (Sketches 2 & 3). The gear box is of cubic shape, about 20 x 20 x 20 cm. large. It is of gray iron. The shaft with the worm is of hard steel and the worm wheel, which turns it, is of bronze. An electric motor is connected to the shaft with the worm. The shaft sits in a bronze bushing, is approximately 15 mm. thick and, together with the worm, measures 25 mm. The bronze worm wheel is 50 mm. in diameter. Source does not know the exact purpose of this product. Its weight is about 3 kg. The box is filled with oil.

- Legend:
- A. worm shaft, of Mark 1202 steel.
 - B. cast-iron flange for affixing a motor.
 - C. worm, with thread about 5 mm. deep.
 - D. bronze bushing of the shaft.
 - E. bronze worm wheel.
 - F. shaft, to which the bronze worm wheel is attached.
 - G. box of gray iron.
 - H. holes for attaching the gear box.

Transmission gear box ISketch 2

SECRET/CONTROL-U.S.OFFICIALS ONLY

25X1

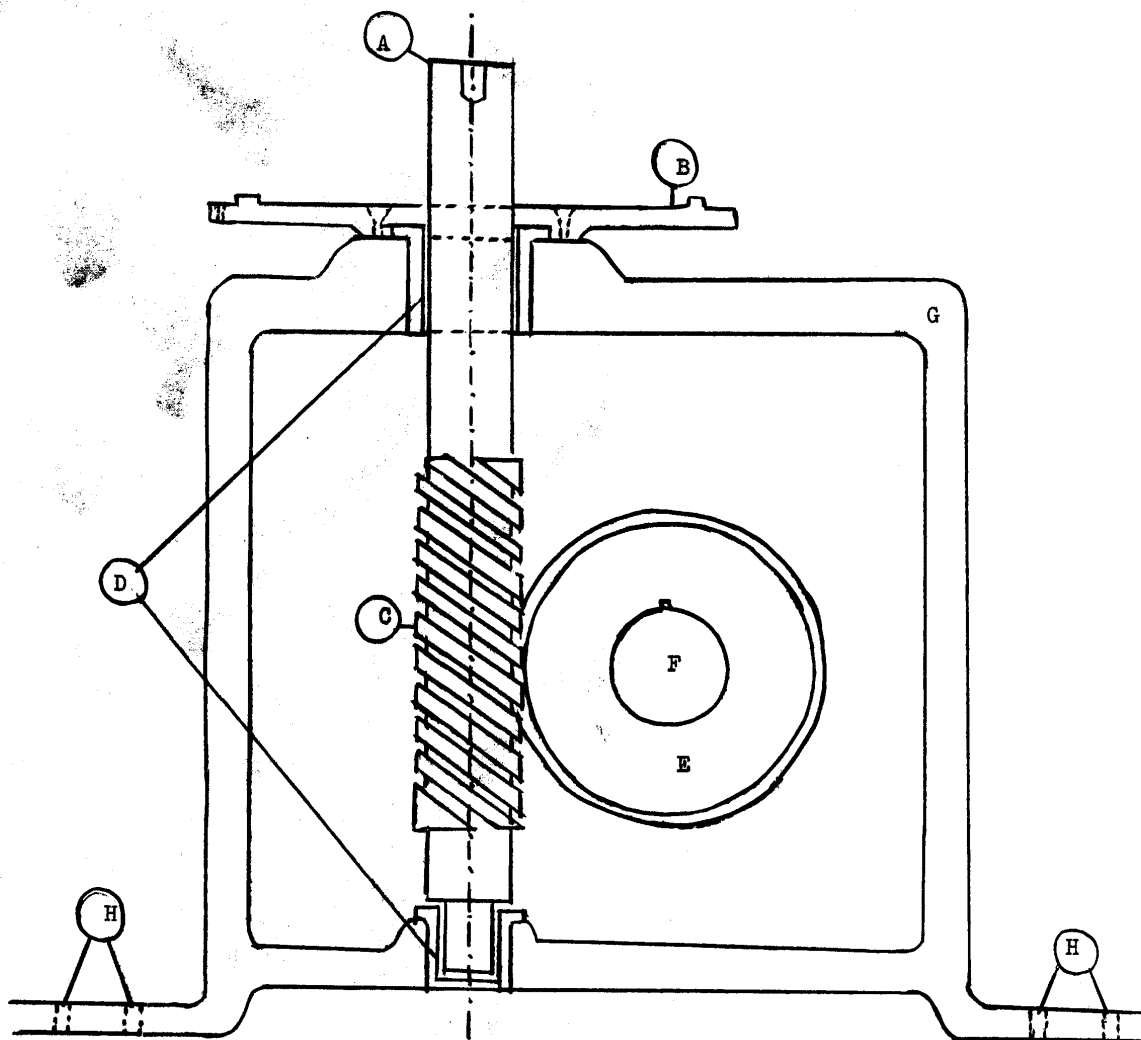
SECRET/CONTROL-U.S.OFFICIALS ONLY



- 5 -

Transmission gear box I

Sketch 3



SECRET/CONTROL-U.S.OFFICIALS ONLY

SECRET/CONTROL-U.S.OFFICIALS ONLY

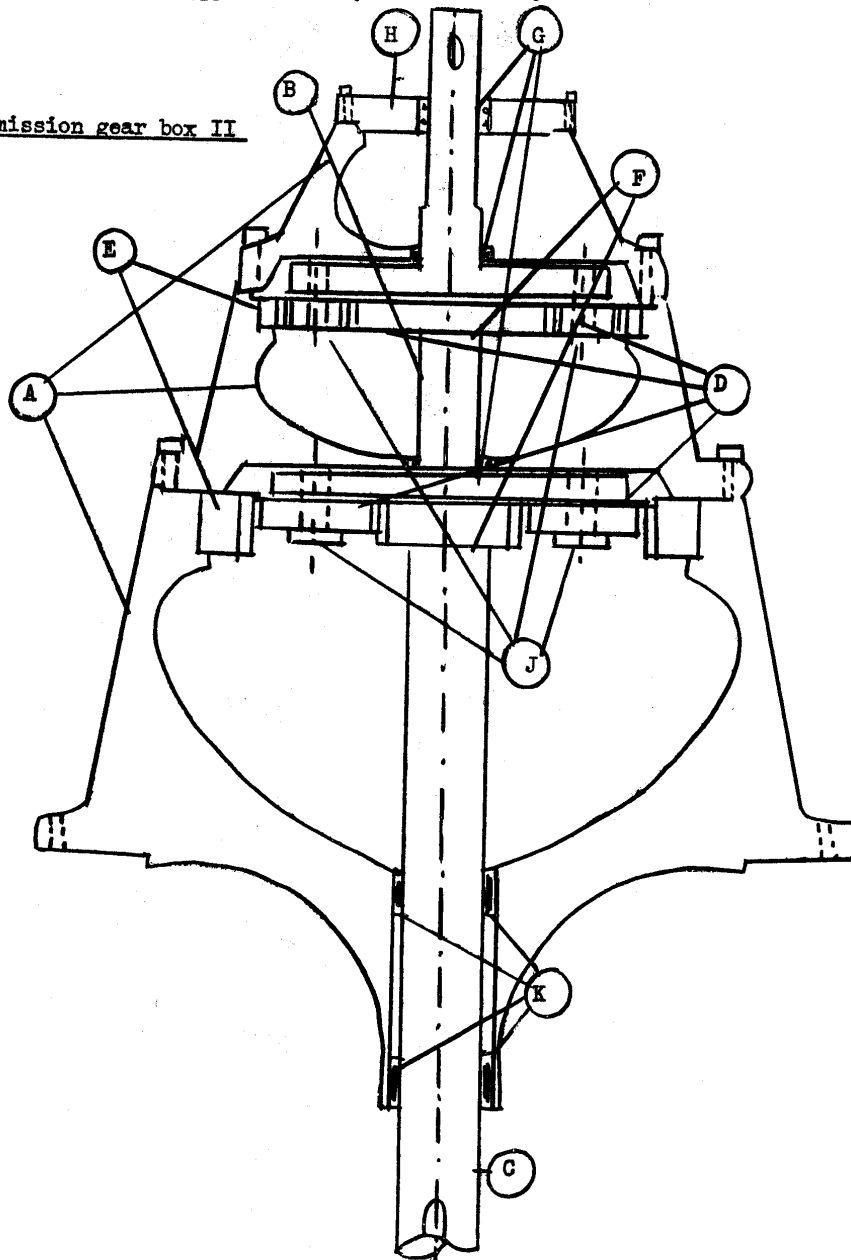
- 6 -

Description and legend of Gear Box II (Sketch 4):

- A. Gear boxes of gray cast iron, of three parts, held together by screws.
- B. Steel driving shaft for conveying and reducing driving speed.
- C. Drive shaft manufactured from steel rods; connected with drive motor.
- D. & F. Gear for reducing speed; of turned and hardened steel, 12020, cut from bars.
- E. Internal gears of forged steel.
- G. Three ball bearings.
- H. Iron flange of electric motor.
- J. Pivots of forged and hardened steel, 12020, which join the gears to the driving shafts.
- K. Cast-iron bushings for shafts.

This product is about 110 mm.¹ long and weighs approximately 100 kg. Its maximum width is about 60 cm. This type is shipped to Komarno Shipyards.

1. Washington Comment. Presumably cm. is meant.

Transmission gear box II

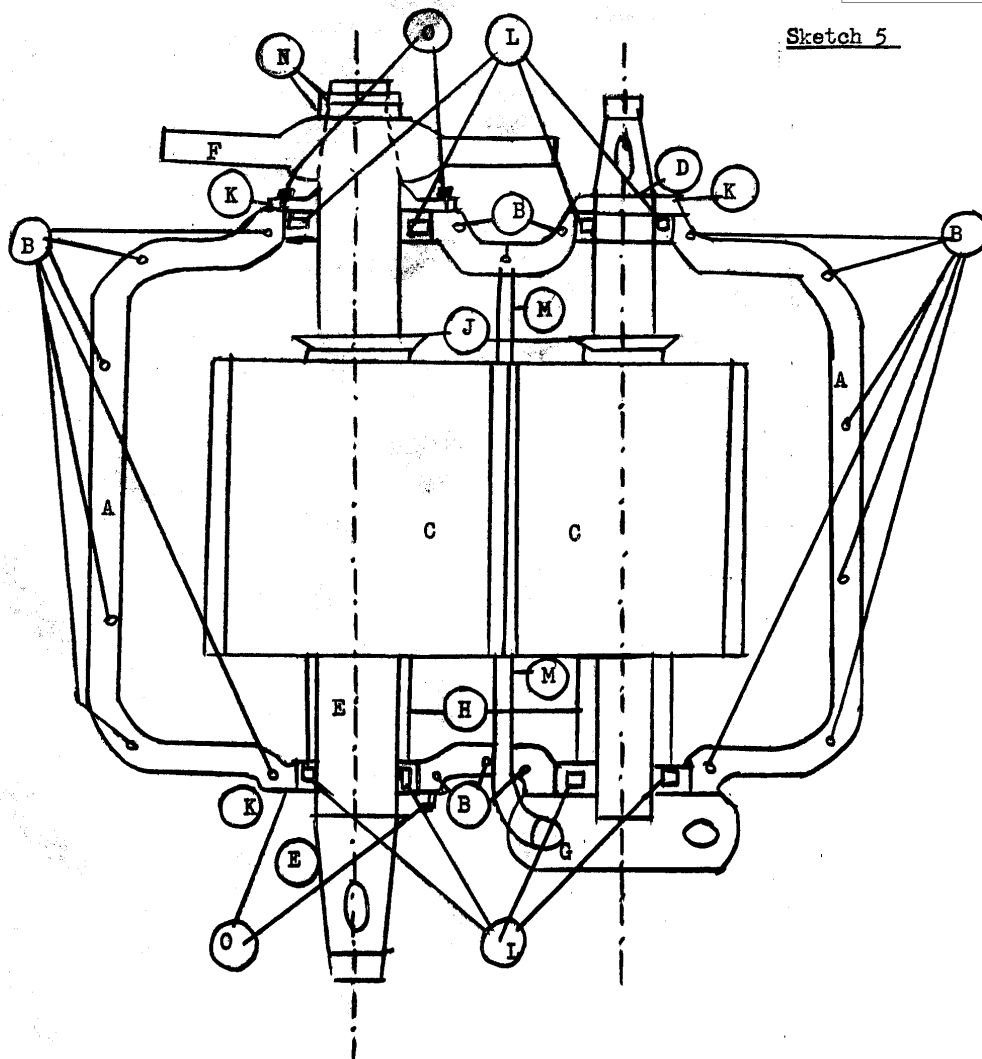
SECRET/CONTROL-U.S.OFFICIALS ONLY

25X1

SECRET/CONTROL-U.S. OFFICIALS ONLY

- 7 -

Sketch 5



Legend and description of reduction box: (Ordered by Russia)

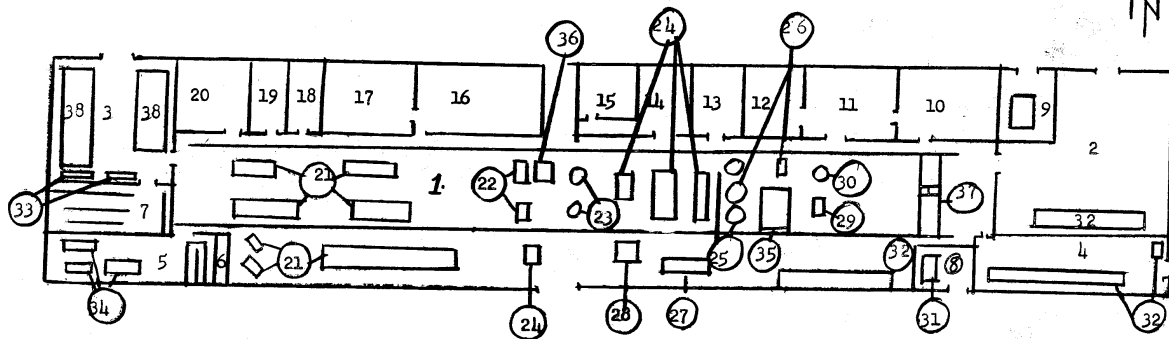
- A. Gray-iron reduction box consisting of 2 halves.
- B. Holes for joining the two halves of the box.
- C. Two alloy-steel gears; one is fixed to shaft D, of 45 cm . diameter, and about 45 cm . high, the other fixed to shaft E, of 50 cm . diameter and 45 cm . high. Their teeth are 4 cm . high.
- D. Drive shaft, of forged steel, about 20 cm . thick.
- E. Drive shaft, of forged steel, of approximately 20 cm . diameter.
- F. Flywheel, of about 70 cm . diameter and 10 cm . thick.
- G. Oil gear pump.
- H. Gray-iron distance tubes which define the distance between the gear and the bearing.
- J. Gray-iron oil rings, on the shaft of each gear.
- K. Lids of the outlets of the shafts (3 of them hermetic).
- L. Russian roller bearings.
- M. Tube for lubricating the gears.
- N. Nut for affixing the flywheel to the shaft.
- O. Screws that hold the hermetic lids.

25X1

SECRET/CONTROL-U.S. OFFICIALS ONLY

Main building, Skoda Works - Walter Plant in Zlicin

Sketch 6.



Scale: 1:250

SECRET/CONTROL-U.S. OFFICIALS ONLY

SECRET/CONTROL-U.S.OFFICIALS ONLY

- 9 -

Legend to Sketch No. 6:

1. The hall with machine tools.
2. Testing room for gear boxes.
3. Store and preparation for materials.
4. Painting shop.
5. Newly equipped tool grinding shop.
6. Tool issue room.
7. Store of bearings.
8. Hardening shop.
9. Room with a generator for production of current.
10. Office of the Works manager.
11. Workshop office.
12. Office of foremen of individual shifts.
13. Electric transformer.
14. Switchboard.
15. Store of spare tools.
16. Cloak rooms.
17. Washrooms.
- 18., 19. Lavatories.
20. Store of non-ferrous metals.
21. Lathes.
22. Vertical milling machines.
23. Drilling machines with jointed arms.
24. Horizontal milling machines.
25. Machines for machining teeth on gears.
26. Milling machines for milling teeth.
27. External grinding machine.
28. Slotting machine.
29. Grinding machine with magnetic chuck.
30. Small drilling machine.
31. Hardening furnace.
32. Benches with vises.
33. Saws for metal.
34. Grinding machines for machine tools.
35. Control table.
36. Blocks for marking the castings.
37. Overhead mobile crane.
38. Shelves for storing steel rods.

SECRET/CONTROL-U.S.OFFICIALS ONLY