

619914

619914

CENTRAL INTELLIGENCE AGENCY
INFORMATION REPORT

This material contains information affecting the National Defense of the United States within the meaning of the Espionage Laws, Title 18, U.S.C. Secs. 793 and 794, the transmission or revelation of which in any manner to an unauthorized person is prohibited by law.

SECRET/U.S. OFFICIALS ONLY

COUNTRY	East Germany/China	REPORT
SUBJECT	VEB Inex Plans for a Factory for China	DATE DISTR. [REDACTED] 1954
DATE OF INFO.	[REDACTED]	NO. OF PAGES 7
PLACE ACQUIRED	[REDACTED]	REQUIREMENT NO. RD
		REFERENCES

25X1

25X1

This is UNEVALUATED Information

THE SOURCE EVALUATIONS IN THIS REPORT ARE DEFINITIVE.
THE APPRAISAL OF CONTENT IS TENTATIVE.
(FOR KEY SEE REVERSE)

25X1

1. VEB Projektierungsbuero fuer Schwermaschinenbau, Berlin/Spindlersfeld, has been re-named VEB INEX (Industrie Anlagen Export), Industrial Installations, Export. It is at present engaged in the design of a factory for China ((DOC (Dokumentation China))
2. The preliminary plan of the factory is complete, and the technical plan is being developed. Recently, a delegation consisting of the following returned to East Germany from China:
Adolf Hegemann, Hauptverwaltungsleiter Radio-und Fernmeldetechnik;
Berthold Koppe, engineer with VEB INEX;
Susskow, (fnu), engineer with VEB INEX.
They had completed the agreement with the Chinese on the preliminary plan. It is anticipated in VEB INEX that construction work on the foundations of Department IV will start in the Autumn of 1954, and that the whole combine will be completed in 1956-1957.
3. Attached as Annex A is a list of the products or activities planned for each department of the factory.
4. Attached as Annex B is the ground plan of the factory, on a scale of 1:3,000, using the original numbers. A key to this is given in Annex C.

25X1

SECRET/U.S. OFFICIALS ONLY

STATE	X	ARMY	X	NAVY	X	AIR	X	FBI		AEC	OSI (FV) X	ORR (V) X
-------	---	------	---	------	---	-----	---	-----	--	-----	------------	-----------

(NOTE: Washington distribution indicated by "X"; Field distribution by "#")

SECRET/U.S.OFFICIALS ONLY

- 2 -

Annex A

Production of the factory by Departments

Department I

Precision engineering shop
Preliminary mechanical finishing shop (Mech. Vorfertigung)
Varnishing shop and infrared drying plant
Battery section
Rotary condensers (Drehkondensatoren)
Loudspeakers
Telephone mouth pieces and earphones
Dynamic microphones
Measuring instruments
Production of bearing stones (Zeiss, Jena, system)
Plastics press
Magnet production
Sinter magnets
Metal powder production
Hydrogen plant
Cast magnets

Department II

Condensers
Resistances
Fixed resistances
Variable " (Drehwiderstaende)
Rectifiers

Department III

Ceramics
Ceramic condensers
Ceramic tube plates (Rohrenplaetten) and resistances.

SECRET/U.S.OFFICIALS ONLY

SECRET, U.S. OFFICIALS ONLY

- 3 -

Annex A

Department IV

Repair, machine construction and electrical workshop

Pig-iron and aluminum foundry

Tool shop

Forge

Department V

Power, steam and gas installations

Department VI

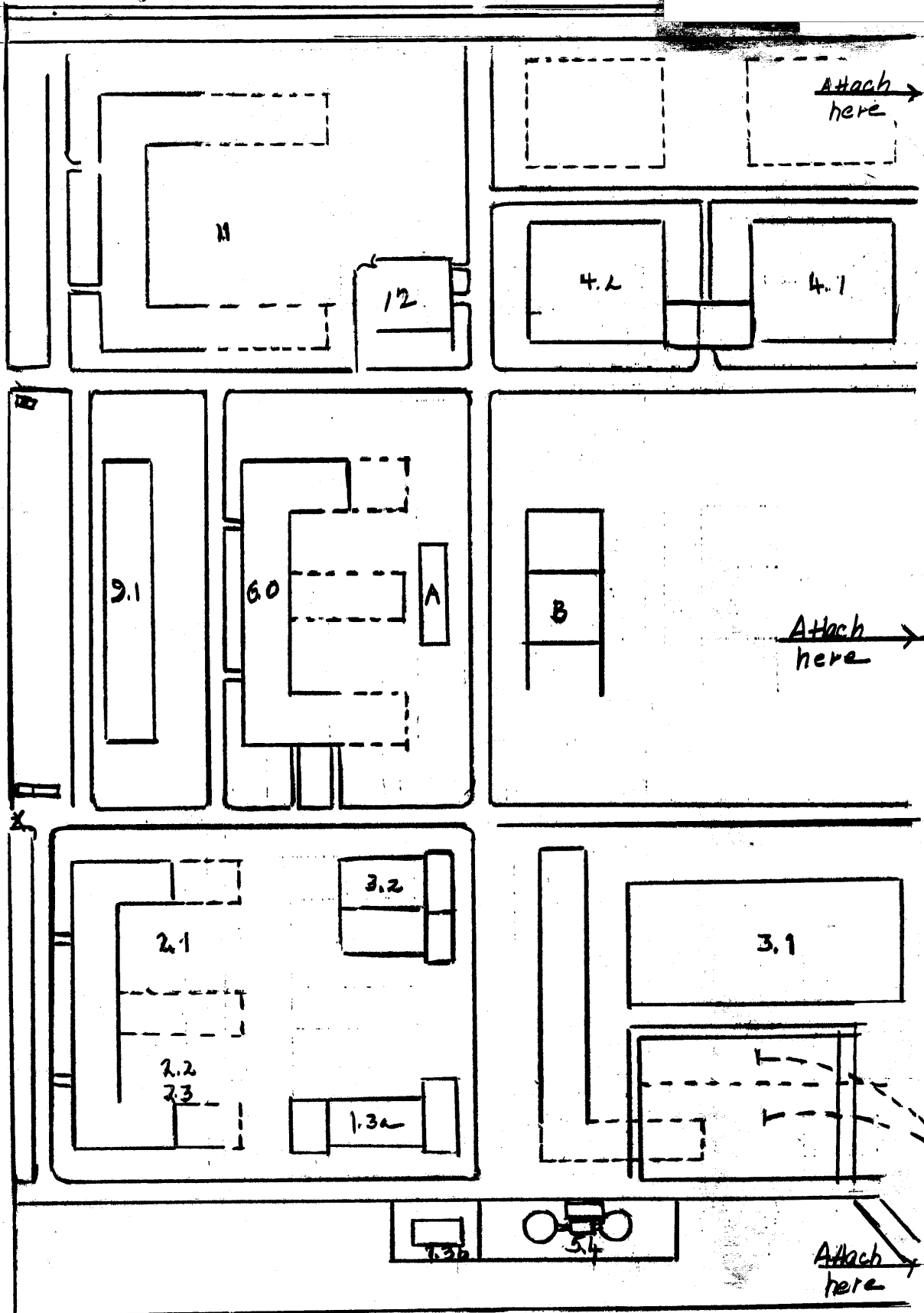
Development laboratory for measuring instruments and resistances.

SECRET, U.S. OFFICIALS ONLY

SECRET/U.S.OFFICIALS ONLY

Annex, B

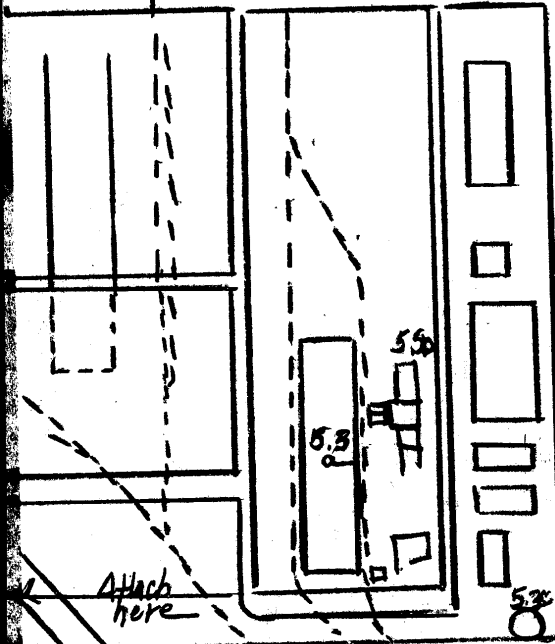
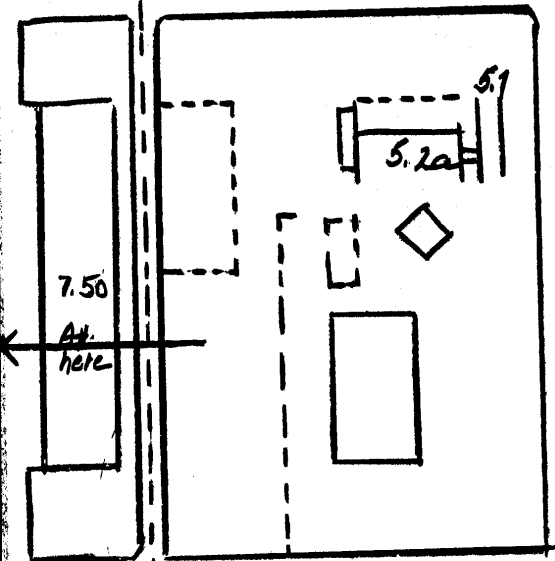
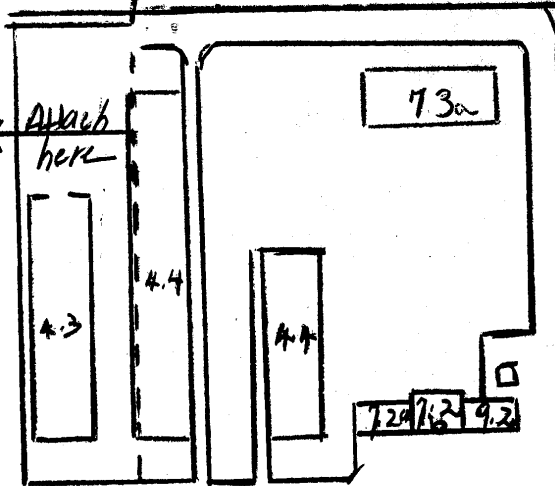
- 4 -



SECRET/U.S.OFFICIALS ONLY

SECRET/U.S.OFFICIALS ONLY

Annex B



SECRET/U.S.OFFICIALS ONLY

SECRET U.S. OFFICIALS ONLY

25X1

- 5 -

Annex C

Key to Ground Plan of the
Factory (Annex B).

Department I

- 1.1 Precision engineering and instruments shop
- 1.2 Plastics press
- 1.3(a) Magnet alloying shop
- 1.3(b) Hydrogen plant

Department II

- 2.1 Condensers shop
- 2.2 Resistances shop
- 2.3 Selenium rectifiers shop

Department III

- 3.1 High frequency techniques and ceramics shop
- 3.2 Ceramic magnets shop

Department IV

- 4.1 Machine construction shop
- 4.2 Tool construction shop
- 4.3 Foundry
- 4.4 Building workshop

Department V

- 5.1 Transformer station
- 5.2(a) Power unit
- 5.2(b) Coal bunker
- 5.3(a) Coal bunker
- 5.3(b) Gasworks
- 5.3(c) Gasometer

SECRET/U.S.OFFICIALS ONLY

SECRET/U.S.OFFICIALS ONLY

Annex C

Department VI

6.0 Radio laboratory

Department VII

7.2(a) Garage

7.2(b) Repair shop

7.3(a) Inflammable materials storehouse

7.3(b) Central storehouse

7.3(c) Locomotive sheds

Administration

9.1 Central administrative offices

9.2 Fire service

A Medical services

B Canteen

1. Comment: The scale remains correct. Numerical symbols are original; alphabetical symbols were added to aid in the compilation of the key (Annex C). In this table 5.4 may be presumed to be the steam-producing installation, though it was not marked on the original.

25X1

25X1

25X1

SECRET/U.S.OFFICIALS ONLY