

CENTRAL INTELLIGENCE AGENCY  
**INFORMATION REPORT**

REPORT

CD NO.

COUNTRY

East Germany

DATE DISTR.

10 November 1954

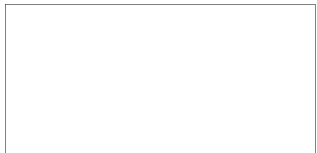
SUBJECT

Rail Freight Traffic through Cuban

NO. OF PAGES

4

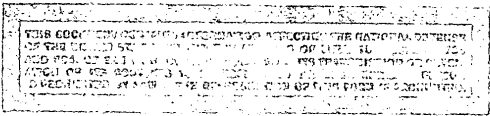
PLACE ACQUIRED



NO. OF ENCLS.  
(LISTED BELOW)

DATE OF INFO.

SUPPLEMENT  
REPORT NO.



THIS IS UNCLASSIFIED INFORMATION



Following shipments passed through the Cuban border station, in the directions indicated, between 30 July and 5 August 1954:

- B - Boxcar
- F - Flatcar
- G - Gondola Car
- T - Tank Car

Date in July	Number and Type of Cars	Load	From	To
a. Monthlong.				
30	51 B	grain	Yagodín	Cuban
	52 G	hard coal	Katowice	Fuerstenberg
	1 B	grain	"	"
	49 G	hard coal	"	"
	48 B	grain	Yagodín	Cuban
	59 G	hard coal	Katowice	Fuerstenberg
31	43 B	grain	Brest Litovsk	Cuban
	11 F	iron plates		
	36 B	grain	Yagodín	"
	53 G	hard coal	Katowice	Fuerstenberg
	52 G	"	"	"
	42 B	grain	Yagodín	Cuban
	16 G	undetermined		
	3 B	grain	Poland	"

CLASSIFICATION SECRET

STATE	NAVY	NSRB	DISTRIBUTION						
ARMY	AIR	FBI							

**Page Denied**

SECRET

-2-

Month	Day	Category	Item	Origin	Destination
July	31	9 G	hard coal	Poland	Guben
August	1	42 B 16 F	grain iron	Brest Litovsk	"
		30 G	hard coal	Katowice	Fuerstenberg
		42 B 15 G	grain undetermined	Poland	Guben
	2	52 B 3 F	grain iron	Brest Litovsk	"
		33 G	hard coal	Katowice	Fuerstenberg
		40 B 4 G	grain iron	Brest Litovsk	Guben
		42 B	grain	Yagodin	"
		41 G	hard coal	Katowice	Fuerstenberg
		52 G	"	"	"
		22 B 29 F	grain iron	Brest Litovsk	Guben
	3	46 B 13 F	grain iron	"	"
		54 G	hard coal	Katowice	Fuerstenberg
		7 G 2 B	" grain	Poland	Guben
	4	50 G	hard coal	Katowice	Fuerstenberg
	22 B 26 F	grain iron	Brest Litovsk	Guben	
	49 G	hard coal	Katowice	Fuerstenberg	
	9 B 11 B	grain military goods: tobacco, spare parts	Brest Litovsk	Guben	
	4 F 14 F 8 G	acetic acid sheet metal and iron plates iron tubes			
5	10 B 17 B 19 F 7 G	grain empty iron hard coal	Brest Litovsk	Guben	
	52 G	hard coal	Katowice	Fuerstenberg	
	36 B	grain	Yagodin	Guben	
	43 B	"	"	"	
	59 G	hard coal	Katowice	Fuerstenberg	
	37 B 7 G	grain hard coal	USSR	Guben	
	55 G	hard coal	Katowice	Fuerstenberg	

SECRET

SECRET

-3-



25X1

Date	Number and Type of Cars	Load	From	To
<u>b. Eastbound.</u>				
<u>July</u>				
30	59 G	empty	Guben	Katowice
	47 G	"	"	"
	59 G	"	"	"
	1 B	undetermined	"	Poland
	8 B	empty	"	"
31	9 B	undetermined	"	"
	19 G	empty	"	"
	56 B	empty for grain	"	Kowel
<u>August</u>				
1	59 G	empty	"	Katowice
	55 G	"	"	"
	56 G	"	"	"
	59 B	empty for grain	"	Kowel
	57 G	empty	"	Katowice
2	58 G	"	"	"
	34 G	"	"	"
	58 G	"	"	"
	50 B	empty for grain	"	Kowel
	59 G	empty	"	Katowice
	52 G	"	"	"
3	59 G	"	"	"
	59 B	empty for grain	"	Kowel
	59 G	empty	"	Katowice
	59 G	"	"	"
	58 B	empty for grain	"	Kowel
	57 B	" " "	"	"
	59 G	empty	"	Katowice
4	59 G	"	"	"
	59 G	"	"	"
	55 B	empty for grain	"	Kowel
	59 G	empty	"	Katowice
	59 G	"	"	"
	59 G	"	"	"
5	57 G	"	"	"
	3 B	undetermined	"	Poland
	3 B	empty	"	"
	52 G	"	"	"

SECRET

SECRET






25X1

~~4~~August

5	59 G	empty	Guben	Katowice
	45 G	"	"	"
	56 B	empty for grain	"	Kowel

2

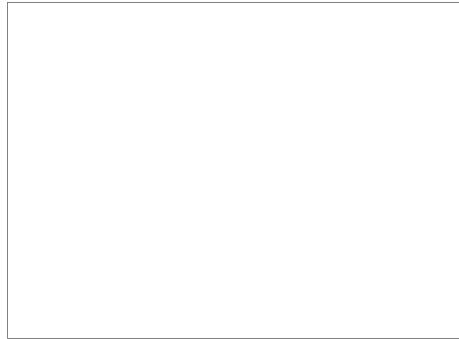
1.  Comment: Compared to the last reported period, grain imports from the USSR decreased from a daily average of 137 carloads to 96 carloads. Hard coal imports from Poland decreased from a daily average of 147 carloads to 116 carloads. 
2.  Comment: The number of empty boxcars for grain shipments from the USSR decreased from a daily average of 82 to 66. The number of empty gondola cars for coal shipments from Poland decreased from 239 to 202 cars per day.

25X1

25X1

25X1

25X1



SECRET