

CLASSIFICATION ~~SECRET~~

- U.S. OFFICIALS ONLY

COUNTRY East Germany

REPORT

TOPIC Glindow Radar StationEVALUATION PLACE OBTAINED 25X1DATE OF CONTENT 25X1DATE OBTAINED DATE PREPARED 6 December 1954 25X1

REFERENCES _____

PAGES _____ ENCLOSURES (NO. & TYPE) 4 2 - two sketches on ditto.

REMARKS _____ with legend

This is UNEVALUATED
Information

1. On 3 November 1954, a radar station was observed on a hill southeast of Glindow. The hill was steep on two sides. Its slopes were lightly covered with trees and bushes, while the top was bare. Personnel were only permitted to enter the radar station with the unit commander Lieutenant Colonel Pismak (fnu). A small temporary building was scheduled to be built in the radar station. Construction work could not yet be started since the names of the workers had to be submitted to the NKVD before. 1

2. About 25 men who wore black-bordered blue epaulets and were under the command of Lieutenant Shamotin (fnu) were assigned to the radar station. The troops belonged to Unit Pismak and were quartered in 2 small wooden barracks which had been built by the troops themselves. A tent stood slightly apart from the barracks. The following sets were in the radar station: 1 Token-type set, 1 Kniferest-type set, 1 Dumbo-type set, and an umbrella-type antenna on top of a mast about 7 meters high. While pointing to the Token-type set Lieutenant Colonel Pismak once said: "With that we can see aircraft as far as London." 25X1

3. No motor vehicles were seen near the installation. It was possible, however, that vehicles were parked under camouflage behind the bushes. There were several tunnels in the hill, which presumably served as garages. Four entrances were seen and it was possible that additional entrances existed. Each entrance was large enough for a truck to pass. A full-track vehicle about 4 meters wide was observed in one tunnel

1. Comment. Lieutenant Colonel Pismak is known to be the commander of the signal unit which is quartered in 3 buildings on Werder airfield. Therefore, it is assumed that the radar station belongs to the headquarters of the Twenty-Fourth Air Army in Werder. Two additional radar stations were observed near Gollm west of Potsdam in April 1954 and near Geltow southeast of Werder in May 1954. It is believed that the radar stations observed each time are 25X1

CLASSIFICATION ~~SECRET~~

- U.S. OFFICIALS ONLY

SECRET

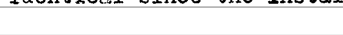
- U.S. OFFICIALS ONLY




25X1

- 2 -

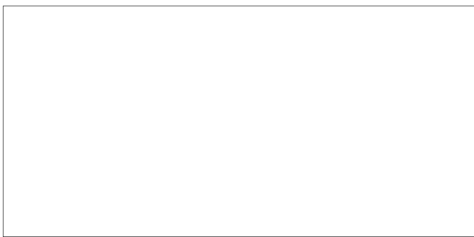
identical since the installations were not observed later.

 For rough sketch of radar station near Glindow, see Annex 1. The sketch was made without regard to cardinal points.

25X1

2.  Comment. For sketch of umbrella-type antenna, see Annex 2.

25X1



25X1

SECRET

- U.S. OFFICIALS ONLY

SECRET

- U.S. OFFICIALS ONLY

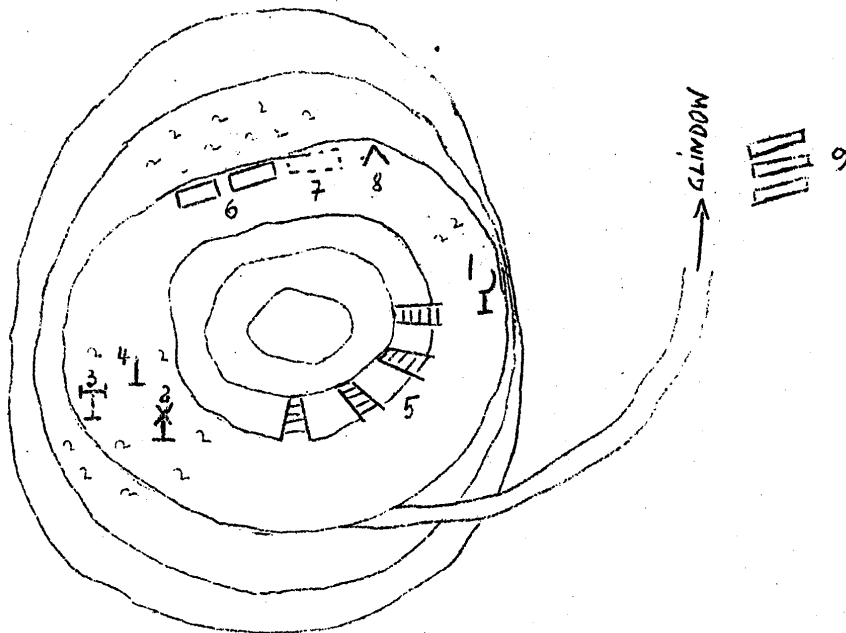
- 9 -

Annex 1



25X1

Glindow Radar Station



Legend.

- 1 Token-type set
- 2 Kniferest-type set
- 3 Dumbo-type set.
- 4 Umbrella-type antenna
- 5 Four tunnels for motor vehicles
- 6 Two temporary buildings
- 7 A planned temporary building
- 8 Tent
- 9 Brickyard

Distance between Token-type set and Kniferest-type set
250 to 300 meters

Distance between Kniferest-type set and Dumbo-type set 30 to 50 meters

SECRET

- U.S. OFFICIALS ONLY

SECRET

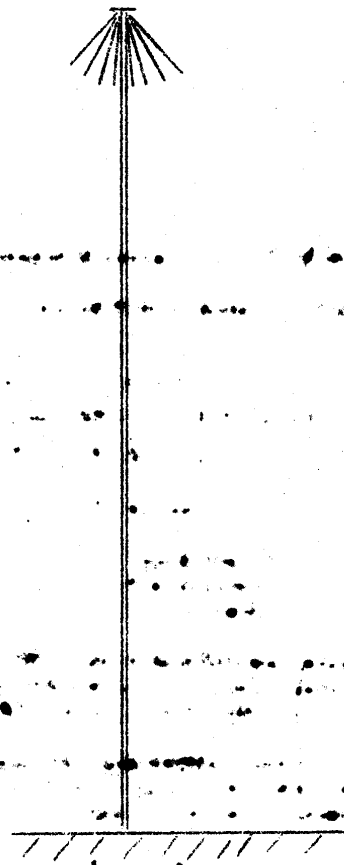
- U.S. OFFICIALS ONLY

- 4 -

Annex 2

25X1

Umbrella-Type Antenna in (Blind) Radar Station



Mast about 7 meters high.

Rods on masthead 40 to 50 cm long; small cover plate on top.

SECRET

- U.S. OFFICIALS ONLY

CLASSIFICATION SECRET/CONTROL - U.S. OFFICIALS ONLY

East Germany

COUNTRY East Germany REPORTTOPIC Glindow Radar Station

25X1

EVALUATION

PLACE OBTAINED

25X1

25X1

DATE OF CONTENT

DATE OBTAINED

DATE PREPARED

6 December 1954

25X1

REFERENCES

PAGES 2 4 ENCLOSURES (NO. & TYPE) 2 - two sketches on ditto,

25X1

with legend

REMARKS

This is UNEVALUATED
Information

1. On 3 November 1954, a radar station was observed on a hill southeast of Glindow. The hill was steep on two sides. Its slopes were lightly covered with trees and bushes, while the top was bare. Personnel were only permitted to enter the radar station with the unit commander Lieutenant Colonel Pismak (fnu). A small temporary building was scheduled to be built in the radar station. Construction work could not yet be started since the names of the workers had to be submitted to the NKVD before. 1

25X1

2. About 25 men who wore black-bordered blue epaulets and were under the command of Lieutenant Shamotin (fnu) were assigned to the radar station. The troops belonged to Unit Pismak and were quartered in 2 small wooden barracks which had been built by the troops themselves. A tent stood slightly apart from the barracks. The following sets were in the radar station: 1 Token-type set, 1 Kniferest-type set, 1 Dumbo-type set, and an umbrella-type antenna on top of a mast about 7 meters high.² While pointing to the Token-type set Lieutenant Colonel Pismak once said: "With that we can see aircraft as far as London."

3. No motor vehicles were seen near the installation. It was possible, however, that vehicles were parked under camouflage behind the bushes. There were several tunnels in the hill, which presumably served as garages. Four entrances were seen and it was possible that additional entrances existed. Each entrance was large enough for a truck to pass. A full-track vehicle about 4 meters wide was observed in one tunnel

Comment. Lieutenant Colonel Pismak is known to be the commander of the signal unit which is quartered in 3 buildings on Werder airfield. Therefore, it is assumed that the radar station belongs to the headquarters of the Twenty-Fourth Air Army in Werder. Two additional radar stations were observed near Golm west of Potsdam in April 1954 and near Geltow southeast of Werder in May 1954. It is believed that the radar stations observed each time are

25X1

25X1

CLASSIFICATION SECRET/CONTROL - U.S. OFFICIALS ONLY

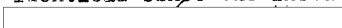
SECRET/CONTROL - U.S. OFFICIALS ONLY




25X1

- 2 -

identical since the installations were not observed later.

 For rough sketch of radar station near Glindow, see Annex 1. The sketch was made without regard to cardinal points.

25X1

2.  Comment. For sketch of umbrella-type antenna, see Annex 2.

25X1



25X1

SECRET/CONTROL - U.S. OFFICIALS ONLY

SECRET/CONTROL - U.S. OFFICIALS ONLY

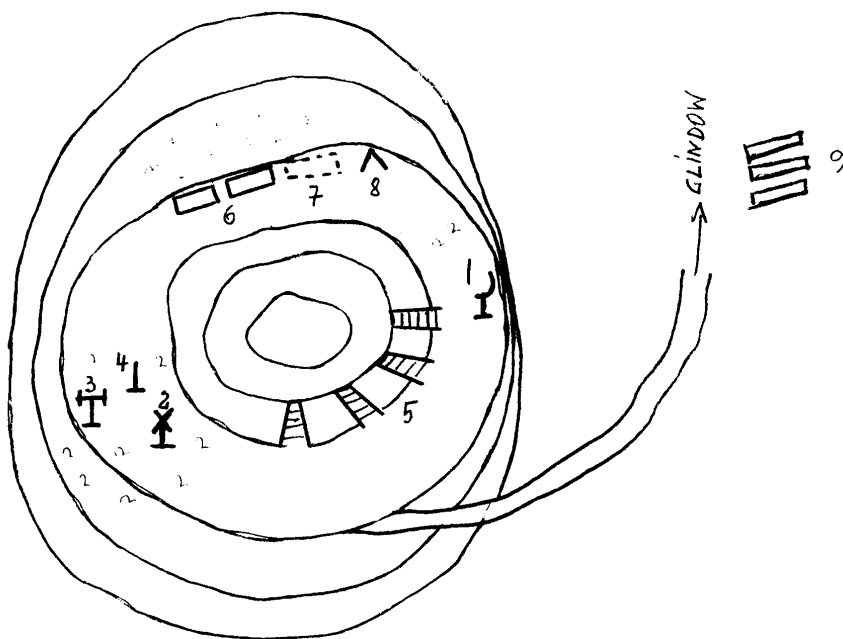
- 3 -

Annex 1



25X1

Glindow Radar Station



Glindow Radar Station

Legend.

- 1 Token-type set
- 2 Kniferest-type set
- 3 Dumbo-type set
- 4 Umbrella-type antenna
- 5 Four tunnels for motor vehicles
- 6 Two temporary buildings
- 7 A planned temporary building
- 8 Tent
- 9 Brickyard

Distance between Token-type set and Kniferest-type set
250 to 300 meters

Distance between Kniferest-type set and Dumbo-type set 30 to 50 meters

SECRET/CONTROL - U.S. OFFICIALS ONLY

SECRET/CONTROL - U.S. OFFICIALS ONLY

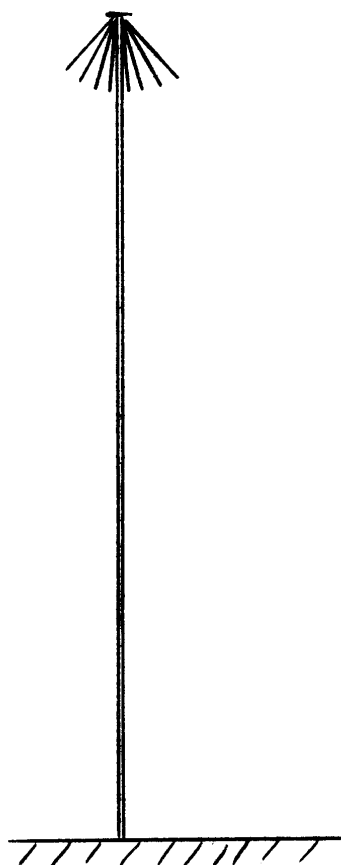
- 4 -

Annex 2



25X1

Umbrella-Type Antenna in Glindow Radar Station



Mast about 7 meters high.

Rods on masthead 40 to 50 cm long; small cover plate on top.

SECRET/CONTROL - U.S. OFFICIALS ONLY