

OCI-0157

67946

26 September 1952

MEMORANDUM FOR: Assistant Director/Research and Reports

FROM : Assistant to the Director

SUBJECT : Motembo Naphtha Field

STAT

1. Yesterday [ ] who has been a persistent and unsuccessful applicant for a position with the Agency came in to leave with me a piece of intelligence which he considers of potential importance. I have no doubt that it is "old hat" to your people but I am passing it on for whatever you may consider it is worth.

STAT

2. There is apparently, Naphtha field near the North coast of Cuba, about 120 miles east of Havana, which has been noted for some time for the production of high-grade natural Naphtha on a small non-commercial scale. The attached sheet from The Oil and Gas Journal of October 18, 1941 (repeat, 1941) describes one of the more phenomenal producers in the area. [ ] point was that given the venality of the local inhabitants he has always suspected that this supply of natural fuel might have been used by the Germans in their Caribbean submarine operations in the late war and has potentiality for such use in the event of a future war. His efforts as an Army Intelligence officer during the war to secure serious consideration for this theory were apparently quite unsuccessful and I shall not be surprized if your reaction is similar.

STAT

3. [ ] address here in Washington, in the event you should want to talk with him, is [ ]

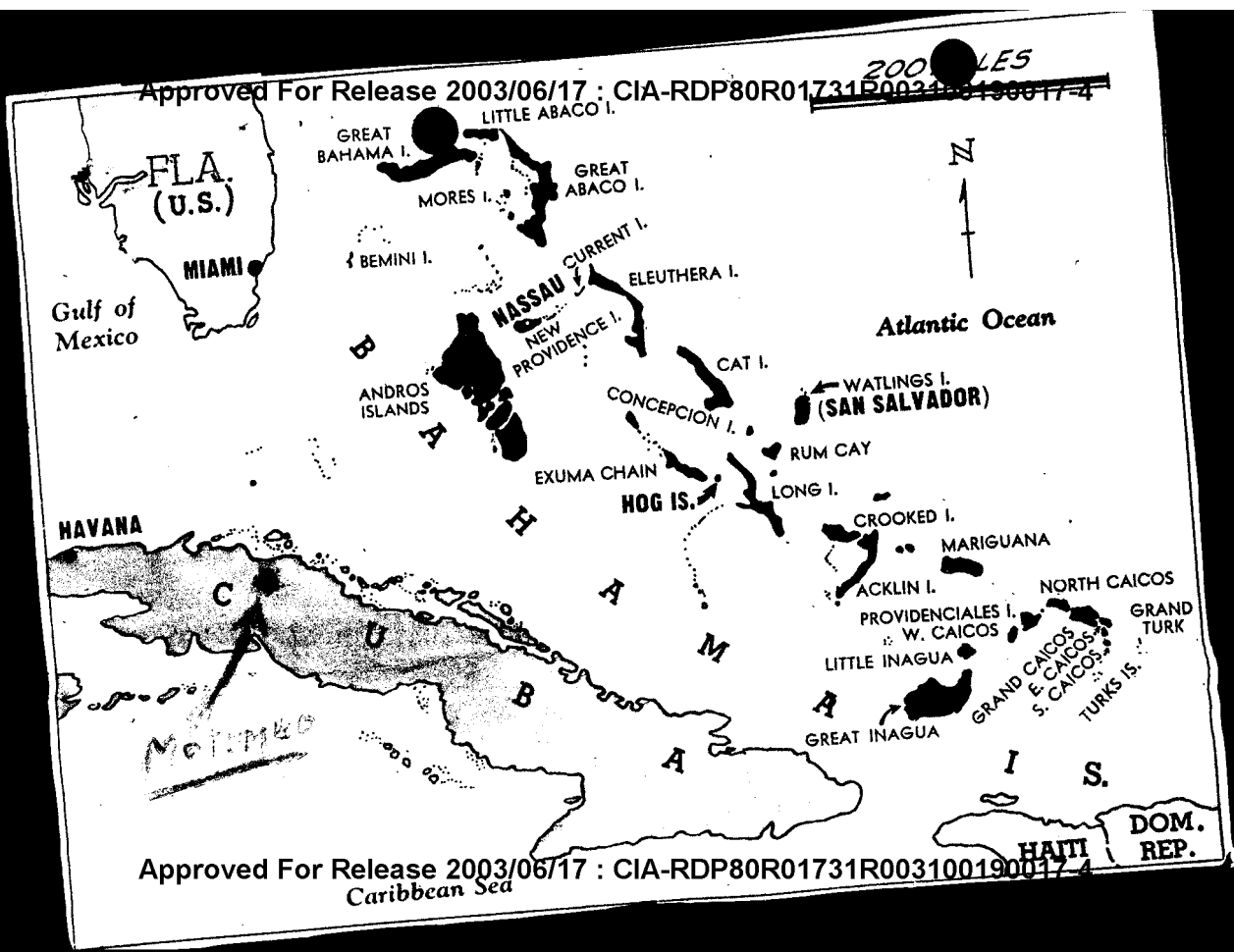
STA

STA

Attachment

100 (PR 10)  
Sci/S

Approved For Release 2003/06/17 : CIA-RDP80R01731R003100190017-4



# International

## Venezuela . .

### Standard and Lago Raise Daily Average Production

COMBINED daily average production of the Standard Oil Co. of Venezuela and Lago Petroleum Corp. increased 27,715 bbl. to 319,979 bbl. in May. The combined exports of the two companies also increased 1,101,503 to 9,018,593 bbl. May exports of the Standard of Venezuela totaled 2,633,030 bbl. and those of Lago, 6,385,562 bbl.

A summary of the daily average production of these companies in May follows:

(Figures in United States barrels)			
Area—	S.O.V.	Lago	Total
Lake fields . . . . .	7,583	214,233	221,816
Other western fields . . . . .	4,971	4,971	9,942
Eastern Venezuela . . . . .	86,662	6,530	93,192
May total . . . . .	99,216	220,763	319,979
April total . . . . .	97,193	195,071	292,264
Change . . . . .	2,023	25,692	27,715

A record of the well completions during May in which these companies are interested follows:

Area—	No.	Average initial (ft.)	Average total depth (ft.)
Josefin . . . . .	4	503	4,885
San Joaquin . . . . .	2	1,498	5,826
Oficina . . . . .	1	702	5,510

SEVERE rains, reminiscent of those of 7 or 8 years ago which established precipitation records for Venezuela, constitute a barrier to wildcat operations in the eastern part of the country. These rains, which have persisted for the past month, have slowed operations throughout the area. Some test-well locations have been virtually isolated by the almost impassable roads.

Among the drilling operations in this part of the country which are being watched closely is the Quiamare test of Mene Grande Oil Co. This test, in northern Anzoategui, was reported drilling at 6,700 ft. last week, still in a tight shale formation. This company is also operating two rigs in the Santa Rosa and two in the Leona-Tigre areas.

The Texas Co. (Venezuela), Ltd., is still testing at several intervals in the 1 Rincon Largo which has been bottomed at 9,631 ft. The derrick has been completed for 2 Rincon Largo, but operations have been held up pending the results obtained in testing No. 1.

## Cuba . .

### Motembo Naphtha Well Flows 684 Bbl. per Day

PRODUCTION of 684 bbl. of naphtha in 24 hours from Centralia Naphtha Co.'s new completion in the Motembo field, in Lot 1, Ampliation of Faust claim, ranks it as one of the best producers in Cuba's most important reserve.

The Motembo field, according to a communication from Charles Ginart, general manager of Centralia Naphtha, produces more than 1,000,000 gal. of naphtha per month. Production sells for 20 cents per gallon at the well.

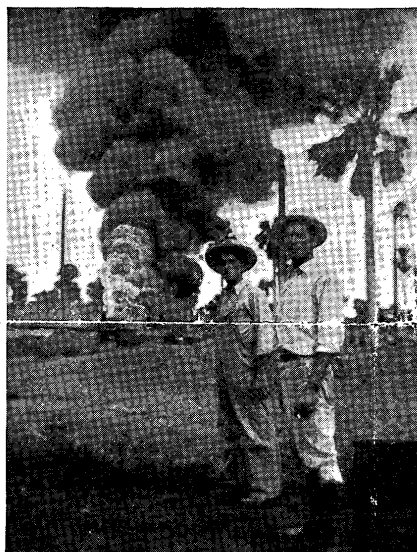
Centralia Naphtha Co.'s No. 5, which gaged 684 bbl. of production in 24 hours, ignited July 15 but has been extinguished and placed on a regular operating basis. Current output is reported to be nearly equal to the initial flush.

Mr. Ginart declared that current production from the Motembo field is more than the local market requirements. He suggested that Coordinator Ickes use his influence with the three major marketers in Cuba in obtaining an outlet for the surplus production.

### Production of Distillate Increases

Production of "distillate gasoline" in the Motembo field, located in the Provinces of Matanzas and Las Villas, has shown a steady increase in the past few years. Current production is at the rate of 455 bbl. daily.

According to unofficial statistics, total output of Motembo gasoline in 1940 amounted to 135,715



Centralia Naphtha Co.'s new distillate producer in the Motembo field in Cuba ignited shortly after it was completed for initial of 648 bbl. daily. The well since has been brought under control and is now on regular production for one of the best in the field

bbl., compared with 104,170 bbl. in the preceding year, with estimated production during 1941 at a rate in excess of 166,650 bbl. At present there are about 200 wells in operation in the Motembo field. Approximately three wells must be drilled in order to obtain one productive well.

Since 1935 Motembo distillate has accounted for a progressively increasing proportion of the motor fuel sold in Cuba, amounting to 10.5 per cent of the total in 1940. The competitive status of refined gasoline has been adversely affected by the large spread between the taxes applied on refined gasoline, and those collected on distillate produced in Cuba. The increased sales of Motembo distillate during recent years have been made only because of the very substantial price differential favoring the domestic natural product. In this connection, it is interesting to note that one of the provisions of the tax-reform bill under discussion in the Cuban Congress, would modify the relative tax status of the various types of gasoline and fuel mixtures, and if enacted into law would, accord-

ing to sources in the refined-gasoline trade, further unbalance the competitive position of this gasoline versus the Motembo product, and very likely induce more vehicle owners to switch to the latter fuel.

## Turkey . .

### Motor - Fuel Consumption, Mostly From Rumania, Gains

GASOLINE imports during the first 3 months of 1941 totaled 103,055 bbl., compared with 93,255 bbl. in the corresponding period of 1940, according to official Turkey statistics. Rumania was the principal source of supply, with 87,015 bbl. Palestine followed, furnishing 11,755 bbl. Gasoline imports from the United States declined to less than 10 bbl., from 50 bbl. in the first 3 months of 1940.

Arrivals of kerosene into Turkey reached 147,015 bbl. during the 1941 first quarter, in comparison with 111,800 in the same period of 1940. Imports from Rumania increased to 130,565 bbl. against 42,565 a year ago. No kerosene was received from the United States during the first quarter of 1941. Turkish imports from the United States during the corresponding quarter of 1940 are recorded as 53,390 bbl.

Turkish imports of light fuel oils declined to 46,775 bbl. during the first 3 months of 1941, from 80,500 bbl. in the same months of 1940. Egypt and Rumania were the leading suppliers, with 20,015 and 19,300 bbl., respectively (3,290 and 58,820 bbl. in the 1940 period). While the United States was not a source of supply during the 1941 period, it furnished 15,885 bbl. during the first quarter of 1940.

An important gain was shown during the 1941 first quarter in heavy fuel oil imports into Turkey of 26,640 bbl., over 1940 first-quarter imports of 6,095 bbl. Rumania furnished 26,600 bbl., compared with only 4,760 bbl. in the first 3 months of 1940. The United Kingdom supplied 35 bbl. (none in the 1940 period).

## Burma . .

### Crude Production Declines Slightly, Official Data Show

CRUDE-OIL production of 7,737,900 bbl. for 1940 was recently reported in official figures from Burma. The production last year was slightly below that of 1939 which totaled 7,873,455 bbl.

Production in the third quarter of 1940, excluding the Kyaukpyu field, data for which are not yet available, amounted to 1,947,815 bbl., compared with an output of 2,032,820 bbl. in the third quarter of 1939. In the September quarter of 1939, the Kyaukpyu field produced 75 bbl.

Burma's crude production during the first 9 months of 1940, excluding Kyaukpyu, is recorded as 5,849,100 bbl., in comparison with 5,701,100 bbl. in the corresponding months of 1939. Production of the Kyaukpyu field amounted to 240 bbl. during the 1939 period.

Production during the first quarter of 1940 amounted to 1,888,750 bbl., against 2,172,330 bbl. in the fourth quarter of 1939.



J · E · SITTERLEY & SONS, INC.

423 EAST 54<sup>TH</sup> STREET  
NEW YORK 22

*Publishers of* WORLD'S BUSINESS  
and *GUIDE*

August 26, 1952

STAT   
Assistant to the Director  
Central Intelligence Agency  
Washington 25, D. C.

REC  
*[Handwritten signature]*

STAT Dear :

My reasons for wishing to have a confidential meeting with the Director any time at his convenience are better, in my opinion than the excuses you have advanced in your letter of the 22nd as to why I am to be denied an appointment with him.

We will consider the matter closed.

Cordially yours,

*[Handwritten signature]*  
President

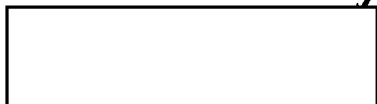
EFS:M

3-1871

ER-File

15 August 1952

STAT



STAT

Dear 

Your letter addressed to Admiral Sidney W. Souers dated 29 July, whereby you attached a resume of your experience and qualifications relative to possible employment with this Agency, has been referred to this office for appropriate action.

I have read your resume with interest. However, in order that we may have a complete picture of your qualifications, would you be good enough to complete and return the enclosed forms together with three passport size photographs of yourself at your earliest convenience. Your personal data will then be reviewed by appropriate divisions within our organization and you will be advised with all possible speed regarding the disposition of your case.

Thank you for your interest in this Agency.

Sincerely yours,

  
Chief, Personnel Procurement

STA

cc:  
Admiral Souers

PPD/JAC:hwa ( 15 August 1952)  
Distribution;  
1-O/DCI  
1-Subjects' File  
1-Chrono  
1-Admiral Souers

1-Front Office Correspondence

Approved For Release 2008/06/17 : CONFIDENTIAL 1731R00310019001  
(SENDER WILL CIRCLE C ONIFICATION TOP AND BOTTOM)

CENTRAL INTELLIGENCE AGENCY  
OFFICIAL ROUTING SLIP

TO		INITIALS	DATE
1	DD/I	CS	9/27
2	AD/RR (No interest in this one)	CS	9/30
3	AD/CI	82	3/10
4	US/INT		
5	25X1		
FROM		INITIALS	DATE
1	Ass't to the Director	REL	9/26/52
2			
3			

<input type="checkbox"/> APPROVAL	<input checked="" type="checkbox"/> INFORMATION	<input type="checkbox"/> SIGNATURE
<input type="checkbox"/> ACTION	<input type="checkbox"/> DIRECT REPLY	<input type="checkbox"/> RETURN
<input type="checkbox"/> COMMENT	<input type="checkbox"/> PREPARATION OF REPLY	<input type="checkbox"/> DISPATCH
<input type="checkbox"/> CONCURRENCE	<input type="checkbox"/> RECOMMENDATION	<input type="checkbox"/> FILE

REMARKS:

Approved For Release 2008/06/17 : CONFIDENTIAL 1731R00310019001