

OCB

INFORMATION REPORT INFORMATION REPORT

CENTRAL INTELLIGENCE AGENCY

This material contains information affecting the National Defense of the United States within the meaning of the Espionage Laws, Title 18, U.S.C. Secs. 793 and 794, the transmission or revelation of which in any manner to an unauthorized person is prohibited by law.

25X1

C-O-N-F-I-D-E-N-T-I-A-L

COUNTRY	Poland	REPORT	[Redacted]
SUBJECT	Investment Supply and Designing Bureau for Military Projects in Warsaw <i>(Under Min of Heavy Industry)</i>	DATE DISTR.	<i>25 JUL 1959</i> <i>25 July 1959</i>
		NO. PAGES	1
		REFERENCES	RD

DATE OF INFO.	[Redacted]	25X1
PLACE & DATE ACQ.	[Redacted]	25X1

SOURCE EVALUATIONS ARE DEFINITIVE. APPRAISAL OF CONTENT IS TENTATIVE.

[Redacted] report giving detailed information on the organization, subordination, and mission of the Investment Supply and Designing Bureau in Warsaw. The report also contains biographical data on thirty key persons employed at the bureau.

25X1

ARMY review completed.

C-O-N-F-I-D-E-N-T-I-A-L

JA

STATE	#X ARMY	#X NAVY	#X AIR	#X FBI	AEC				
(Note: Washington distribution indicated by "X"; Field distribution by "#".)									

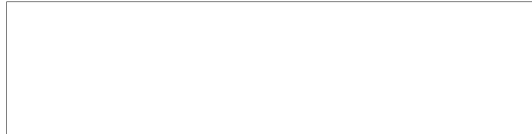
INFORMATION REPORT INFORMATION REPORT

CONFIDENTIAL

25X1

CONFIDENTIAL

THIS IS UNEVALUATED ADVANCE INFORMATION



25X1

THE INVESTMENT SUPPLY AND DESIGNING BUREAU FOR MILITARY PROJECTS IN POLAND,
AND RELATED PERSONALITIES (C)



25X1

Summary: This report contains [redacted] information on the Investment Supply and Designing Bureau (Biuro Projektowania i Dostaw Inwestycyjnych) formerly the Special Projects Bureau (Biuro Projektow Budownictwa Specjalnego), in WARSAW. This project bureau was the only one of its kind in Poland; it planned factories which were to produce only for the military. Included in this report is detailed information on the organization, subordination, and mission of the project bureau, and the descriptions of 30 key personnel employed in the bureau.

25X1



CONFIDENTIAL

CONFIDENTIAL

25X1

Page Denied

CONFIDENTIAL

-2-



25X1

THE INVESTMENT SUPPLY AND DESIGNING BUREAU FOR MILITARY PROJECTS IN POLAND,
AND RELATED PERSONALITIES (C)

Table of Contents

	<u>Page Nr</u>
Introduction.	3
A. INVESTMENT SUPPLY AND DESIGNING BUREAU.	4
1. <u>History</u>	4
2. <u>Mission</u>	5
3. <u>Location of the Bureau Within the Ministry of Heavy Industry</u>	5
4. <u>Organization of the Investment Supply and Designing Bureau</u>	6
5. <u>Radom Branch Office of the Investment Supply and Designing Bureau</u>	15
B. RELATED PERSONALITIES	16-45
COMMENTS	46
Annexes	47-50

CONFIDENTIAL

CONFIDENTIAL

-3-



25X1

THE INVESTMENT SUPPLY AND DESIGNING BUREAU FOR MILITARY PROJECTS IN POLAND,
AND RELATED PERSONALITIES (C)

Introduction

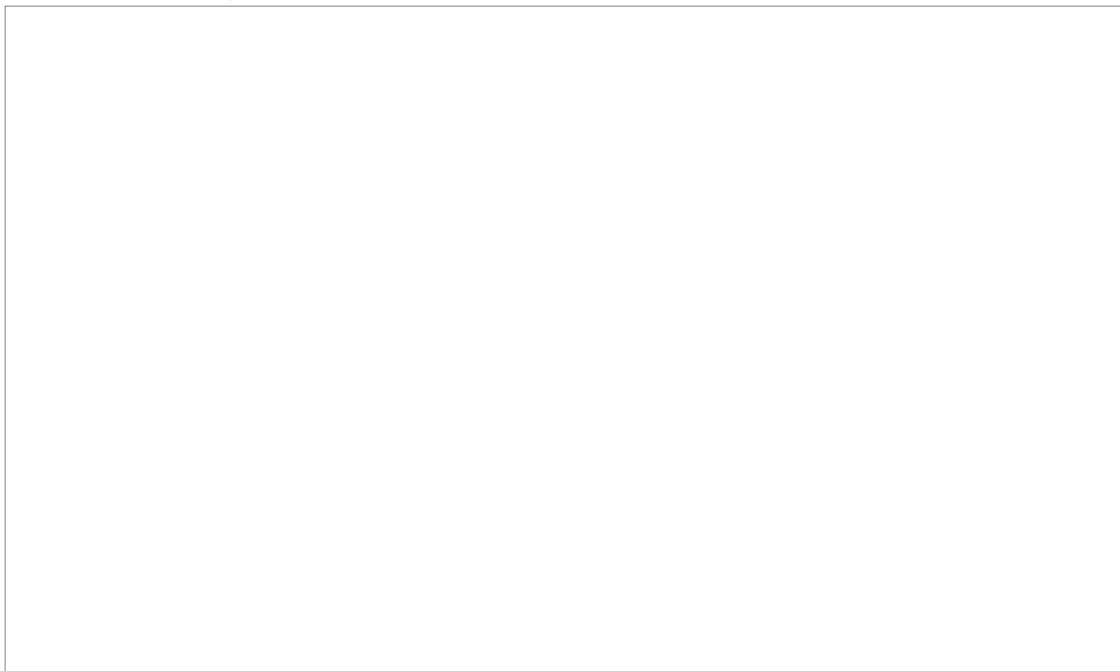


25X1

This was the only project bureau within the Ministry of Heavy Industry which planned factories for military production. [redacted] since the bureau was started in 1949, all factories constructed for military production were planned by this bureau. [redacted] all such factories would be constructed by this bureau in the future.

25X1

25X1



25X1

<u>Location</u>	<u>Geographic</u>	<u>UTM</u>
ANDRYCHOW	N49-51, E19-21	CA-8124
DROCHOBYCZ (DROGOBYCZ, USSR)	N49-20, E23-30	Not available
GORZOW (LANDSBERG)	N51-02, E18-26	CB-193565
KALISZ (KALLIES)	N53-17, E15-53	WV-6160
KARWINA	N49-52, E18-33	CA-1923
MIELCE	N50-52, E20-37	DB-7436

CONFIDENTIAL

CONFIDENTIAL

-4-

25X1

MIELEC	N50-17, E21-25	EA-3071
MNISZEK	N53-29, E18-37	CE-415285
MYSZKOW	N50-35, E19-21	CB-824045
PIOTRKOW TRYBUNALSKI	N51-24, E19-42	DB-0996
PHENIAN (NORTH KOREA)	Not available	Not available
RZESZOW	N50-02, E22-00	EA-7144
SADEK	N51-12, E20-53	DB-915725
SIERADZ	N50-36, E18-44	CG-4319
SKARZYSKO KAMIENNA	N51-08, E20-52	DB-9163
STALOWA WOLA	N50-34, E22-04	EB-7402
STARACHOWICE	N51-04, E21-04	EB-0456
SZYDLOWIEC	N51-13, E20-52	DB-9075
WONSAN (NORTH KOREA)	N39-15, E127-30	Not available

A. INVESTMENT SUPPLY AND DESIGNING BUREAU

1. History

This projects bureau was established in 1949, in RADOM, by the Ministry of Machine Industry (Ministerstwo Przemyslu Maszynowego), and was called the Special Projects Bureau (Biuro Projektow Budownictwa Specjalnego). It employed about 50 people, and its mission was to plan armament factories for the army. Its first projects were the armament factory in RADOM (Fabryka Broni w Radomiu) and the Metal Works in SKARZYSKO KAMIENNA (Zaklady Metalowe w Skarzysku Kamiennym). These two projects completely occupied the bureau until 1951.

In 1951, the Ministry of Machine Industry decided to move the bureau to WARSAW. Elgeniusz BROCHSTEIN was chosen to be the director; he was at that time general project manager in the Radio Factory, Kasprzak (Generalny Projektant Fabryki Aparatow Radiowych - Kasprzaka), in WARSAW. For a short time, BROCHSTEIN's office at the radio factory was used as the main office of the Special Projects Bureau. The name of the bureau remained the same, and many of the former employees from RADOM were offered jobs in the new location and moved to WARSAW. In December 1951, the permanent offices of the Special Projects Bureau were established on ulica Swietej Barbary in central WARSAW. In a matter of a few months, the bureau was expanded to about 500 people and kept on expanding, until by December 1958 about 1100 people were employed.

BROCHSTEIN remained director until 1956, when he was replaced by Kazimierz MIKULA (for personality sketch see personalities section of this report)

25X1

Although MIKULA was the director, Jerzy PIEKUTOWSKI, the chief engineer, really ran the bureau because he was an excellent engineer and a good manager.

CONFIDENTIAL

CONFIDENTIAL

-5-

25X1

From 1949 to 1953, the bureau was subordinate to the Ministry of Machine Industry. In 1953, however, its subordination was transferred to the Ministry of Automotive Industry (Ministerstwo Przemyslu Motorizacyjnego), where it remained until 1956 when there was a reorganization of ministries in Poland and the Ministry of Machine Industry, Ministry of Automotive Industry, and the Ministry of Metallurgical Industry (Ministerstwo Przemyslu Hutniczego) were consolidated to form the Ministry of Heavy Industry (Ministerstwo Przemyslu Ciezkiego), to which the bureau became subordinate. The title of the bureau, however, still remained the same - Special Projects Bureau. *

In 1958 the name of the bureau was changed to Investment Supply and Designing Bureau (Biuro Projektowania i Dostaw Inwestycyjnych), but the mission remained the same.

2. Mission

From 1949 to 1954, the work of the bureau was entirely devoted to making plans for factories to produce for the military.¹ After STALIN's death in 1953, there was a decided shift in emphasis from production for the military to production for civilian use. Projects for military factories dwindled because less money was budgeted for them. In 1954 there was a lack of work for the bureau, and within the bureau there were rumors of a forthcoming reduction in the working force. Civilian projects were accepted by the bureau and the employment level was maintained. To the end of 1958, the bureau was still accepting civilian projects.

Specifically, the original mission of the project bureau was to plan all new factories for military production; to plan all expansion, remodeling, and re-equipping of existing factories or parts of existing factories which were to be adapted for military production; and to maintain complete supervision over all construction to insure compliance with the basic plan. This mission remained the same in that, when military factory projects were to be planned, it planned them. Since 1954, however, civilian factory projects were also planned by the bureau in order to occupy the full staff. [redacted] by 1958, there were not nearly enough military projects to occupy the bureau and consequently most of its work was devoted to planning new factories for civilian production, and expansion, remodeling, and reequipping existing factories for civilian production. Its work for the last two years had closely paralleled that of the Prozamet Metal and Electro-technical Project Bureau (Biuro Projektowania Zakladow Przemyslu Metalowego i Elektrotechnicznego).²

25X1

[redacted] five civilian projects on which the Investment Supply and Designing Bureau had worked in the last two years or on which it was working in 1958: foundry in MNISZEK (Odlewnia Mniszek);³ the Mining Machine Factory in PIOTRKOW (Fabryka Maszyn Gorniczych w Piotrkowie);⁴ the Ursus Mechanical Works (Zaklady Mechaniczne Ursus);⁵ the Compression Ignition Engine Factory (Fabryka Silnikow Wysokopreznych) in ANDRYGHOW;⁶ and the Iron Works at MYSZKOW (Huta MYSZKOW).⁷

25X1

3. Location of the Investment Supply and Designing Bureau Within the Ministry of Heavy Industry

All project bureaus within the Ministry of Heavy Industry were subordinate to the Central Administration of Project Bureaus (see Annex A). Besides this project bureau, the Prozamet Metal and Electrotechnical Project Bureau (Biuro Projektowania Zakladow Przemyslu Metalowego i Elektrotechnicznego), the Biprohut Planning Office of Foundry Equipment (Biuro Projektowania Urzadzen Hutniczych), Bureau of Standardized Projects (Biuro Projektow Typowych), and others [redacted] were among the project bureaus subordinate to the Central Administration of Project Bureaus.

25X1
25X1

CONFIDENTIAL

CONFIDENTIAL

-6-

25X1

4. Organization of the Investment Supply and Designing Bureau

The general director (naczelný dyrektor) of the bureau was Kazimierz MIKULA. His responsibilities included not only the office in WARSAW but also the one branch office in RADOM [redacted]

25X1

a. Secretariat (Sekretariat)

The secretariat was subordinate to the general director and, in fact, part of his office. It was composed of three female private secretaries, one for the general director, one for the deputy director for administrative affairs, and one for the deputy director for technical affairs.

b. Group of General Project Managers (Zespol Generalnych Projektantow)

There were about 20 general project managers subordinate to the general director whose purpose it was to control, coordinate, and direct all the work for a particular project. Their supervision encompassed all phases of the development of the project and the responsibility for supervision of the actual construction. They did not have any administrative or functional control over the sections which actually performed the work; all sections in the bureau were functionally subordinate to either the deputy director for administrative affairs or the deputy director for technical affairs. They worked very closely with the deputy directors, but their primary concern was the over-all project rather than the functioning of any of the performing sections within the project bureau. [redacted] the names of eight of the general project managers [redacted]

25X1

c. Deputy Director for Administrative Affairs (Zastepca Dyrektora do Spraw Administracyjnych)

[redacted] the man holding this post [redacted] was relatively new to the job; he had taken over the position in mid-1958. His work entailed the handling of all administrative functions within the office in WARSAW. There were three divisions subordinate to him, each broken down into sections:

25X1

(1) Administrative Division (Dzial Administracyjny)

The division director was STANKIEWICZ, (fnu) [redacted], whose job it was to control, coordinate, and supervise all of the housekeeping and services personnel, and the employee social benefits section. There were two sections subordinate to him:

25X1

25X1

(a) Housekeeping Section (Sekcja Gospodarcza)

This section employed about 40 people, including drivers, cleaning women, carpenters, a locksmith, cooks and waitresses for the cafeteria, and janitors.

25X1

CONFIDENTIAL

CONFIDENTIAL

-7-

25X1

(b) Social Section (Sekcja Socjalna)

This section had only two women employees (names unknown), who handled such worker problems as nursery schools for employees' children, vacations, health and medical care applications, hardship cases, and recommendations for extra pay.

25X1

(2) Finance and Pay Division (Dzial Finansowy i Rachuby Plac)

The division director was BARAC, (fnu) [redacted] the chief bookkeeper (glowny buchalter), who was in charge of all bookkeeping and pay accounting, and operating the cashier booth. There were two sections subordinate to this division, each responsible for one phase of its work.

25X1

25X1

(a) Bookkeeping Section (Sekcja Ksiegowosci)

This section was composed of about 12 people, including the assistant bookkeeper, three male office workers, and about eight women office workers. It kept the books for the Warsaw office as well as for the Radom Branch.

25X1

(b) Cashier and Pay Section (Sekcja Kasy i Rachuby Plac)

This section was composed of about four people, including the cashier, one male accountant, and two women office workers. It operated the cashier booth, compiled pay rosters, and kept pay records of all the employees in the bureau, both the Warsaw office and the Radom Branch.

25X1

(3) General Division (Dzial Ogolny)

The division director was ZAWISLAK, (fnu) [redacted] His job was to control, coordinate, and supervise the work of nine administrative sections subordinate to the division. All other administrative duties not covered by one of the sections already discussed were performed by one of the sections subordinate to this division. As might be expected, the duties of these nine sections were many and varied, as follows:

25X1

25X1

(a) Personnel Section (Sekcja Personalna)

This section was composed of four people, including the section director (name unknown). Their work was concerned with keeping the personnel records of all personnel in the Warsaw office and Radom Branch office.

25X1

(b) Unclassified Correspondence Section (Kancelarja Ogolna)

This section employed two people, both women (names unknown). Their work was concerned with the processing and distribution of all incoming and outgoing unclassified correspondence.

25X1

CONFIDENTIAL

CONFIDENTIAL

-8-

25X1

(c) Secret Correspondence Section (Kancelarja Tajna)

This section employed three people, one man and two women (names unknown). Their work was concerned with the logging and distribution of all incoming and outgoing secret correspondence. [redacted]

25X1

(d) Technical Copies Section (Kancelarja Techniczna)

This section employed three people (names unknown). All copies of technical sketches, plans, drawings, blueprints, and tables were handled by this section. The personnel did not make the copies themselves, but served as the liaison office between the engineers and technicians and the various reproduction processing rooms. When one wanted copies of any kind made, a sample was given to this office along with instructions as to the type and number of copies to be made, and the entire affair was handled by this section. [redacted]

25X1

(e) Unclassified Library (Archiwum Jawne)

There were four people employed in the operation of the library. All nonclassified projects and all nonclassified parts to all projects were filed in this library by factory name. They were kept for future reference of the engineers and technicians and used on future projects. [redacted]

25X1

(f) Secret Library (Archiwum Tajne)

There were two people employed in the secret library. All secret projects and secret parts of all projects were filed in the library by name of factory. They were kept for future reference of the engineers and technicians and for use on future projects. These projects were not to be taken out of the library but were to be read within it. However, this was not the case in reality: the projects were often signed for and taken to individual offices, where they were sometimes kept overnight. [redacted]

25X1

(g) Reproduction Section (Wyswietlarnia)

The reproduction section employed three people, who actually did the work of making copies of sketches, plans, drawings, and blueprints. Several methods were used for reproduction; the most common method was a photographic process with photosensitive paper (the kind used for blueprints). [redacted] several small rooms were used by the section for reproduction. [redacted]

25X1

(h) Bookbinding Section (Introligatornia)

This section employed six people, whose job it was to assemble projects in completed form. They received separate stacks of printed pages which had to be arranged in order and bound. Several processes were used for binding: rubber gluing, clamping, and stapling. [redacted]

25X1

(i) Typing Pool (Hala Maszyn)

There were 12 women typists in the typing pool. Their job was to perform all typing for the entire office except for the general director and the two deputy directors, who had their own secretaries. [redacted]

25X1

CONFIDENTIAL

25X1

CONFIDENTIAL

-9-

d. Deputy Director for Technical Affairs (Zastępca Dyrektora do Spraw Technicznych)

This was the singly most important person in the entire organization. All technical matters and decisions were his to make, and the greater portion of the mission of the bureau was carried out by the divisions and sections subordinate to him. He also carried the title of chief engineer (główny inżynier). To January 1959, this position was occupied by Jerzy PIEKUTOWSKI [redacted]

25X1

Although the director, MIKULA, held his position not because he was an outstanding engineer but because he was a Party member, this was not the case with PIEKUTOWSKI, who [redacted] ran the bureau because he had the training and professional experience to do the job.

25X1

There were 11 divisions subordinate to the deputy director for technical affairs which together made up the major production portion of the bureau:

(1) Technical Studies Division, T-1 (Dział Opracowań Technologicznych, T-1)

The division director was SZCZEKLIK, (fnu) (for personality sketch see section B. of this report), a mechanical engineer. He had one secretary and about 32 other personnel. The mission of the division was to work out all of the details of a new item or parts to be manufactured. It made the models of the item to be produced and a complete study of the production, to include material from which the item was to be manufactured, time of manufacture, method of manufacture, percentage of waste material, method of finishing, and all other aspects of basic production.

There were two identical sections which carried on this work, each with about 16 people:

(a) Section Number 1 (Pracowania 1)

The section had a chief (name unknown) and about 16 employees, of whom about one half were engineers and one half technicians and draftsmen. Most often there were two or three studies being conducted at one time by the section, but [redacted] the two sections never worked together. [redacted]

25X1

(b) Section Number 2 (Pracowania 2)

Same as section number 1 above.

(2) General Technical Division, T-2 (Dział Technologiczny, T-2)

The division director was ZAGOZDZINSKI, (fnu), a specialist in armament and ammunition factories. He had one secretary and about 40 employees. This was the division which determined all of the general technical requirements for a project, such as number, type, and size of buildings; number, type and size of machines and equipment; size of work force and levels of training by group; number of shifts to be worked; and the general plant layout. This section specialized in the planning of ammunition and armament factories.

CONFIDENTIAL

CONFIDENTIAL

-10-

25X1

The work of the division was broken down into three sections:

(a) Machined Products Section (Pracowania Obrobki Skrawania)

This section had a section chief (name unknown) and about 20 employees, about half engineers and half technicians. They worked out all details for the production of all machine products, specifically, the machined parts to ammunition and arms. [redacted]

25X1

(b) Nonmachined Products Section (Pracowania Obrobki Prasow)

The section chief was Mieczyslaw MICHALOWSKI [redacted]. There were about 15 employees, half of whom were engineers and half technicians. They worked out all the details for the production of nonmachined products, specifically, nonmachined products for ammunition and arms. Most of the work was with parts made from plastic or other material that could be pressed, stamped, or otherwise not machined. [redacted]

25X1

25X1

25X1

(c) Chemical Section (Seksja Chemiczna)

There were only two people employed in the section (names unknown). Their work dealt with the chemical aspects of ammunition and arms production. They were specialists in the field and handled all the chemical portions of the project, specifically, for the production of arms and ammunition. They did not carry on any experimentation but kept up-to-date on all the latest developments in the field which were obtained from the experiments of various institutions in Poland [redacted]

25X1

(3) Technical Projects Division, T-4 (Dzial Technologiczny- Projekty, T-4)

The division director was Piotr BUKOWSKI (for personality sketch see section B. of this report). He had a secretary and about 50 employees. This division dealt with technical aspects of projects excluding technical aspects of construction and all other technical aspects already mentioned. Its work is self evident in the names and descriptions of the four sections subordinate to the division, as follows:

(a) Foundry Projects Section (Pracowania Odlewnicza)

The section chief was a women, Irena MICHALOWSKA, a foundry engineering specialist [redacted]. There were about seven people employed in the section. The work of the section dealt with making projects for foundries or the foundry portion of factory projects. The foundry portions of nearly all post-WW II armament factory projects were made by this section. [redacted] the people in the section did not always know which foundry project belonged to which factory, because they were given instruction only on the foundry portion of the project. In many instances the foundry project could double for a civilian type factory as well as for a military factory; they were always basically the same.

25X1

25X1

CONFIDENTIAL

CONFIDENTIAL

-11-

25X1

- (b) Heat Treatment and Surface Finishing Section (Pracowania Obrobki Ciepłej i Powierzchniowej)

The section chief was Stanislaw JABLONSKI (for personality sketch see section B. of this report). There were about 16 people employed in the section. Their work was concerned with the heat treatment of metal and the surface finishing of the end products, including such processes as painting, galvanizing, plating, polishing, and others.

- (c) Warehouse Projects Section (Pracowania Magazynowa)

The section chief was Jerzy WINNICKI (for personality sketch see section B. of this report). There were about 14 people employed in the section. Their work was concerned with making projects for storage facilities and warehouses for factories of all kinds, including projects for intra-factory transport of all kinds, for use both in the warehouses and in the actual production flow within the factory.

25X1

- (d) Repair and Maintenance Section (Pracowania Narzedziowa i Remontowa)

The section chief was GARBACZ, (fnu) (for personality sketch see section B. of this report). There were nine people employed in the section, whose work it was to project the required number of repair and maintenance personnel needed for a particular factory. All phases of repair and maintenance were included in the work of the section: maintenance of machines, repair of machines and other equipment, maintenance and repair of buildings and grounds.

25X1

- (4) Technical Construction Division, T-5 (Dzial Technologiczny-Konstrukcji, T-5)

25X1

The division director was Edward KOMAR, a mechanical engineer. There were about 80 people employed in the division, distributed among three identical sections and one Furnace Projects Team. The work of the division was concerned with making all the final, detailed plans for actual technical construction (szczegolowe rysunki), including every phase from machines to manufacturing or production processes. For example, exact plans would be drawn to show how a furnace was to be fed with "x" amount of coal per hour to maintain a temperature of "y"; sketches would be made of the furnace, feeding device, and perhaps the temperature controls.

25X1

25X1

- (a) Three Numbered Sections 1,2,3 (Pracowania 1,2,3)

There was a section chief (name unknown) and about 24 people employed in each section. All three sections did the same type of work and each worked independently of the others, making detailed sketches of each machine and how it was used in a complete manufacturing or production process. no further information.

25X1

- (b) Furnace Projects Team (Zespol Piecowy)

There was a team chief and about four engineers employed in the section. They were furnace specialists and made plans for foundry furnaces of all types and capacities.

25X1

CONFIDENTIAL

CONFIDENTIAL

-12-

25X1

(5) Construction Engineering Division (Dzial Konstrukcyjno-Budowlany- BK i Ba) 25X1

The division director was Zdzislaw HAN [redacted] a civil engineer. The director had a secretary and about 130 other employees, including architects, construction engineers, technicians, and cost accounting specialists (kosztorysiarze). Their work was concerned with making all the general plans (plany generalne) and factory layouts for each project. Sometimes a model of the factory layout was made, but most of the time sketches and architects drawings were made. Also included in this work was the determination of the orientation costs (koszty orientacyjne), which were used only as guide figures. The work of the division was broken down into six sections:

25X1

(a) Four Numbered Sections 1,2,3,4 (Pracowania 1,2,3,4)

The four numbered sections were identical in size and function. Each had a section chief and about 29 people. Their work was mostly architectural, in that they designed the buildings, but it also included types of roads and walks and landscape architecture. These sections also had cost estimating specialists who made all costs estimates of projects. [redacted]

25X1

(b) General Plans Sections (Sekcja Planow Generalnych)

This section was composed of five engineers and three draftsmen, whose job it was to make the general factory layout plan. Their work included drawing the exact factory layout, sometimes making scaled models of factories; determining the distance between buildings; determining the location of each building, road, and sidewalk; determining the location of railroad spurs and sidings; and the placement of fences and gates. Their primary interest was the appearance of the factory at completion. [redacted]

25X1

(c) TOPL Section (Sekcja TOPL)

There were only two people in this section, one engineer and one technician. TOPL was the abbreviation for Terenowa Obrona Przeciwlotnicza (Civil Air Defense). The work of this section was to insure that all civil air defense precautions were included and incorporated into each factory plan. These precautions included such things as personnel shelters, first-aid shelters, storage rooms for TOPL equipment (types and numbers of equipment were unknown [redacted]), building dispersion, and air-raid alarm devices. [redacted]

25X1

25X1

[redacted] all its work was highly classified and [redacted]

(6) General Installations Division - Bi (Dzial Budowlano-Instalacyjny - Bi)

This division was referred to within the bureau as "Bi," standing for the last two words in the Polish name. There was a director (name unknown) and about 72 people, including the director's secretary. The work of the division was concerned with four phases of utilities installation, each having a section, as follows:

CONFIDENTIAL

CONFIDENTIAL

-13-

25X1

(a) Ventilation Section (Pracowania Wentylacyjna)

This section had a section chief (name unknown) and about 17 people. Its work was concerned with planning the installation of all ventilation equipment and determination of the type and size of the ventilation system to be used. It did all this work for every project done by the bureau. [redacted]

25X1

(b) Plumbing Section (Pracowania Wodno-Kanalizacyjna)

This section had a section chief (name unknown) and about 17 people. Its work concerned only plumbing installation for all projects done by the bureau. [redacted]

25X1

(c) Central Heating Section (Pracowania Centralnego Ogrzewania)

This section had a section chief (name unknown) and about 17 people. Its work was concerned with the planning of all central heating installations, usually hot air or hot water, for all projects handled by the bureau. Source had no further information.

(d) Gas Installation Section (Pracowania Instalacji Gazowej)

This section had a section chief (name unknown) and about 17 people. Its work was concerned with the installation of all gas facilities for industrial purposes such as in foundry furnaces or in factory laboratories. [redacted]

25X1

(7) Electrical Installations Division - E (Dzial Elektryczny - E)

25X1

This division was referred to within the bureau as "E." There was a division director (name unknown) and about 70 employees, including the director's secretary. The work of the division was concerned with the installation of all electrical facilities. The work was divided among four sections, as follows:

(a) Electrical Supply Division (Pracowania Energetyczna)

This section had a section chief (name unknown) and about 16 employees. Its job was to plan the supply of electricity for the factory (Zasilanie elektryczne Zakladu), both normal and emergency sources of supply (normalne i awaryjne). The work was limited to getting power from a source to the factory; the section did no planning within the factory area. [redacted]

25X1

(b) Two Electrical Installations Sections (Dwie Pracownie Instalacyjne)

These two sections were identical in every way. They each had a section chief (names unknown) and about 16 employees. Their work was concerned with intra-factory and intra-building wiring of machines and equipment. They planned the wiring for each building in the factory and made the internal wiring plan for the entire factory. [redacted]

25X1

(c) Continuous Current Usage Facilities Section (Pracowania Pradow Stalych)

This section had a section chief (name unknown) and about 18 employees. Their work was concerned with the wiring and installation of all continuous current usage facilities, such as electric clocks, factory telephones, intercommunications systems, and signal and fire alarm systems. [redacted]

25X1

CONFIDENTIAL

25X1

CONFIDENTIAL

25X1

-14-

(8) Construction Arrangements and Supervision Division (Dzial Realizacji Dostaw)

There was a division director, Jerzy SWIECKI [redacted]

[redacted] and about 30 employees. [redacted]

its

work included making all construction arrangements, such as contracts with construction agencies and labor unions, which included number of workers, wages, and approximate duration of employment. It also had the responsibility of supervising the actual construction to insure that it was being carried out according to the basic, approved plan. It also checked the progress of the project to insure that the plan was completed on time or that there were valid reasons for its not being completed on time. [redacted]

25X1

(9) Automation Division (Dzial Automatyzacji)

The division director was Tadeusz PIETRZKIEWICZ [redacted]

[redacted] This was the smallest division in the bureau.

There was a division secretary and four engineers (names unknown), whose job it was to plan all production lines with respect to timing and synchronization of machines, routes of production flow, locations of machines, and general intra-factory flow of materials and products. [redacted] this section had been in existence only since 1957. He had no further information.

25X1

25X1

25X1

(10) Standard Projects and Technical Progress Division (Dzial Studiow)

The division director was PIETKIEWICZ, (fnu) (for personality sketch see section B. of this report). There was a division secretary and about 12 employees, eight of whom were engineers and four of whom were translators. The work of the division was divided between two sections:

(a) Standard Projects Section (Pracowania Projektow Typowych)

There was a section chief (name unknown) and about seven engineers. Their work was concerned with checking current projects to insure that there was no duplication of effort, such as making new plans for an installation when plans from a previous project could be used; maintaining a complete file of standard projects; screening all projects and filing those or the parts of those which could be considered reusable; and revising standard projects to keep them up-to-date with technical progress. [redacted] there was a great tendency to standardize as many phases of factory construction as possible because it saved money and time.

25X1

[redacted] in almost all cases there had to be slight revisions made in any of the standard projects so that they could be used in varying types of terrain, constructed with different types of materials, and kept up with the latest technical advancements. There were such projects for many phases of factory construction such as production halls, raw material storage facilities, office buildings, auditoriums, factory power substations, fire houses, carpentry shops, tool shops, furnaces, water reservoirs, and many others. There were standardized projects for varying sizes and capacities of the installation to be constructed. [redacted] further information.

25X1

25X1

CONFIDENTIAL

25X1

CONFIDENTIAL

-15-

(b) Technical Progress Section (Pracowania Postepu Technicznego)

There was a section chief (name unknown), an engineer, and four translators. Their work was concerned with maintaining a library of foreign material with Polish translations for use by the engineers in the bureau. Most of the translations which were done by one of the four translators, were from Russian, French, German, or English. They distributed the material to particular engineers or generally, depending on its scope of interest. They also maintained records of the notes taken by members of Polish delegations to foreign countries on what they had seen and outstanding new developments they had been shown.

25X1

(11) Planning Division (Dzial Planowania)

There was a division director (name unknown) and about 11 employees. Their work was concerned with the processing of projects within the bureau and taking orders for new projects. The work was divided between two numbered sections, as follows:

(a) Section I (Sekcja I)

There was a section chief (name unknown) and four employees. They were concerned with taking new orders for projects, determining the time required to complete the project, determining the cost of the planning of the project, and working out all agreements with the clients.

25X1

(b) Section II (Sekcja II)

There was a section chief (name unknown) and four employees. Their work was concerned with the distribution of work within the bureau. They worked very closely with the project managers of specific projects, to check the progress of the project and insure that it was not being held up for any reasons attributable to poor work distribution within the bureau. They devised methods for increasing work efficiency and insuring a smooth flow of work.

25X1

5. Radom Branch Office of the Investment Supply and Designing Bureau

it employed about 80 people and there were only three divisions: Surveying Division (Dzial Mierniczy); Construction Division (Dzial Konstrukcyjny); and Administrative Section (Dzial Administracyjny).

25X1

it did a lot of surveying in the Silesian area and very limited work on simple projects.

25X1

CONFIDENTIAL

CONFIDENTIAL

-16-



25X1

B. RELATED PERSONALITIES

NAME: BARAC, (fnu)

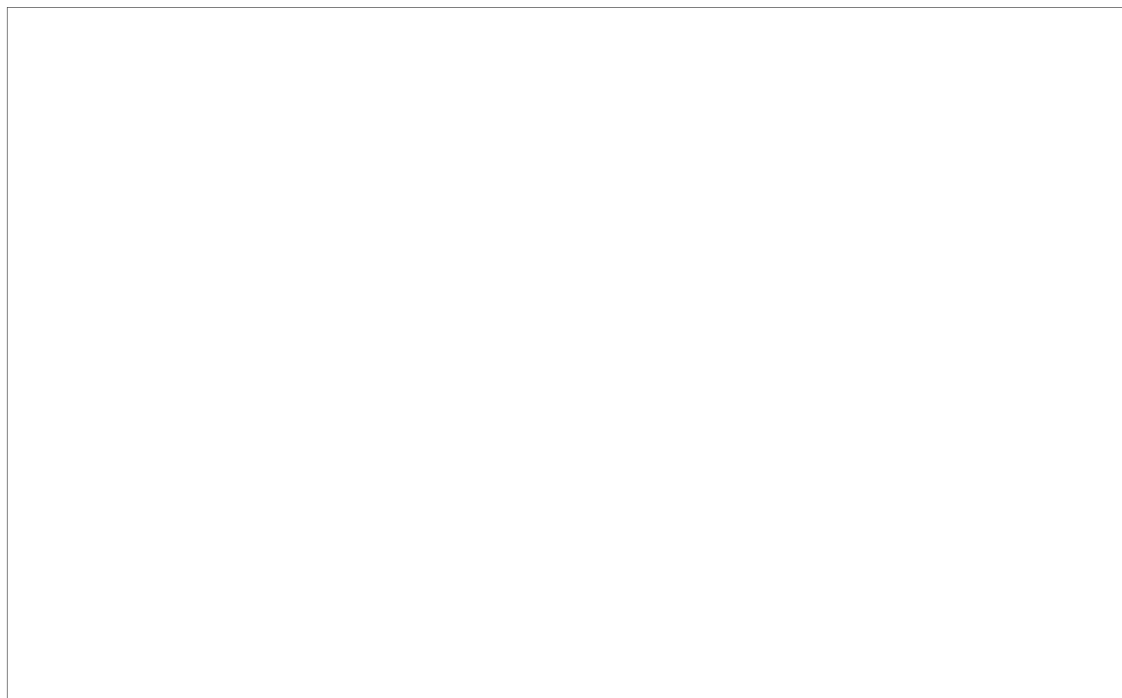
RANK OR TITLE: Section Chief

ARM: N/A



25X1

LAST KNOWN ASSIGNMENT: Chief of the Finance Section of the Special Projects Bureau (Szef Dzialu Finansowego Biura Projektow Budownictwa Specjalnego), in WARSAW.



25X1

CONFIDENTIAL

CONFIDENTIAL

-17-



25X1

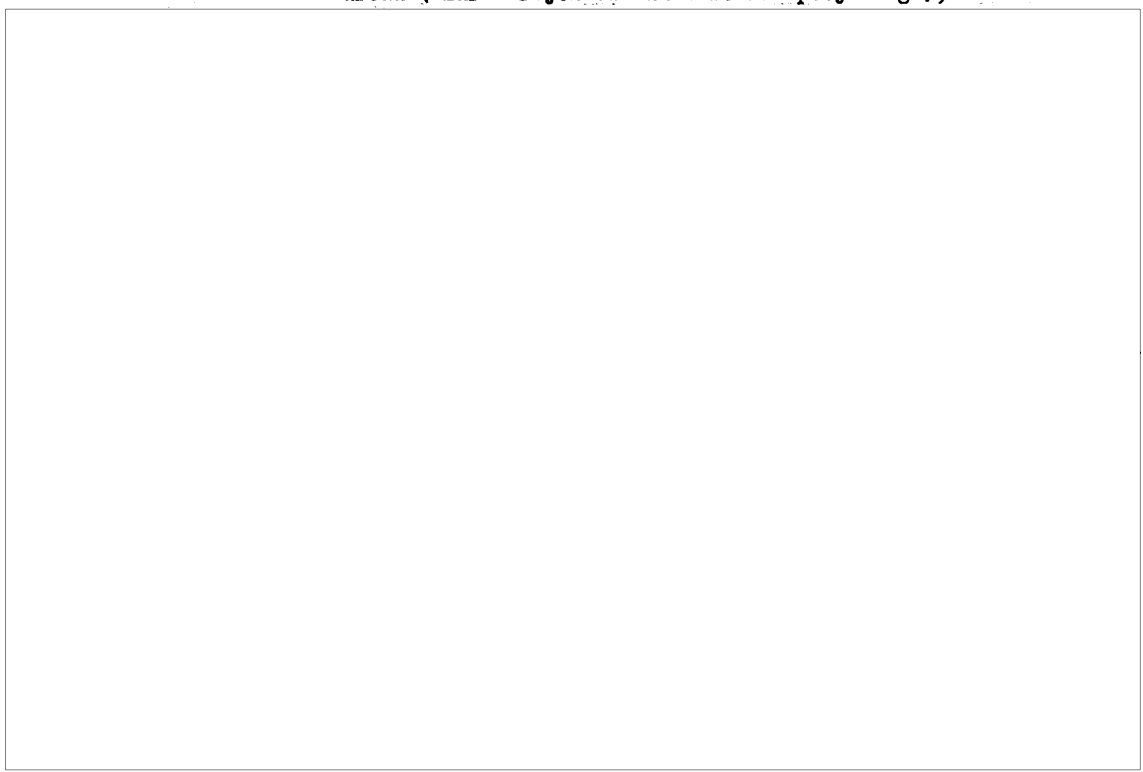
NAME: BUKOWSKI, Piotr

RANK OR TITLE: Master Engineer
ARM: Unknown



25X1

LAST KNOWN ASSIGNMENT: He was director of the Technical Division, T-4, of the Investment Supply and Designing Bureau (Biuro Projektowania i Dostaw Inwestycyjnych) formerly the Special Projects Bureau (Biuro Projektow Budownictwa Specjalnego), in WARSAW.



25X1

CONFIDENTIAL

CONFIDENTIAL

-18-



25X1

NAME: GARBACZ, (fnu)

RANK OR TITLE: Engineer

ARM: Unknown



25X1

LAST KNOWN ASSIGNMENT: He was a section chief in the Technical Division, T-4, of the Investment Supply and Designing Bureau (Biuro Projectowania i Dostaw Inwestycyjnych), formerly the Special Projects Bureau (Biuro Projektow Budownictwa Specjalnego), in WARSAW. 25X1



CONFIDENTIAL

25X1

CONFIDENTIAL

-19-



25X1

NAME: GLUSZENKO, Borys

RANK OR TITLE: Mechanical Engineer

ARM: Unknown



LAST KNOWN ASSIGNMENT: He was a general project manager in the Investment Supply and Designing Bureau (Biuro Projektowania i Dostaw Inwestycyjnych), formerly the Special Projects Bureau (Biuro Projektow Budownictwa Specjalnego), in WARSAW. 25X1



CONFIDENTIAL

CONFIDENTIAL

-20-



25X1

NAME: GUMOWSKI, Tadeusz

RANK OR TITLE: Master Engineer

ARM: Unknown



25X1

LAST KNOWN ASSIGNMENT: He was a part-time general project manager in the Investment Supply and Designing Bureau (Biuro Projektowania i Dostaw Inwestycyjnych), formerly the Special Projects Bureau (Biuro Projektow Budownictwa Specjalnego), in WARSAW. At the same time, he was director of the Studies Bureau in the Air Force Institute (Biuro Studiow w Instytucie Lotnictwa), also in WARSAW.



25X1

CONFIDENTIAL

CONFIDENTIAL

-21-



25X1

NAME: HACKIEWICZ, (fnu)

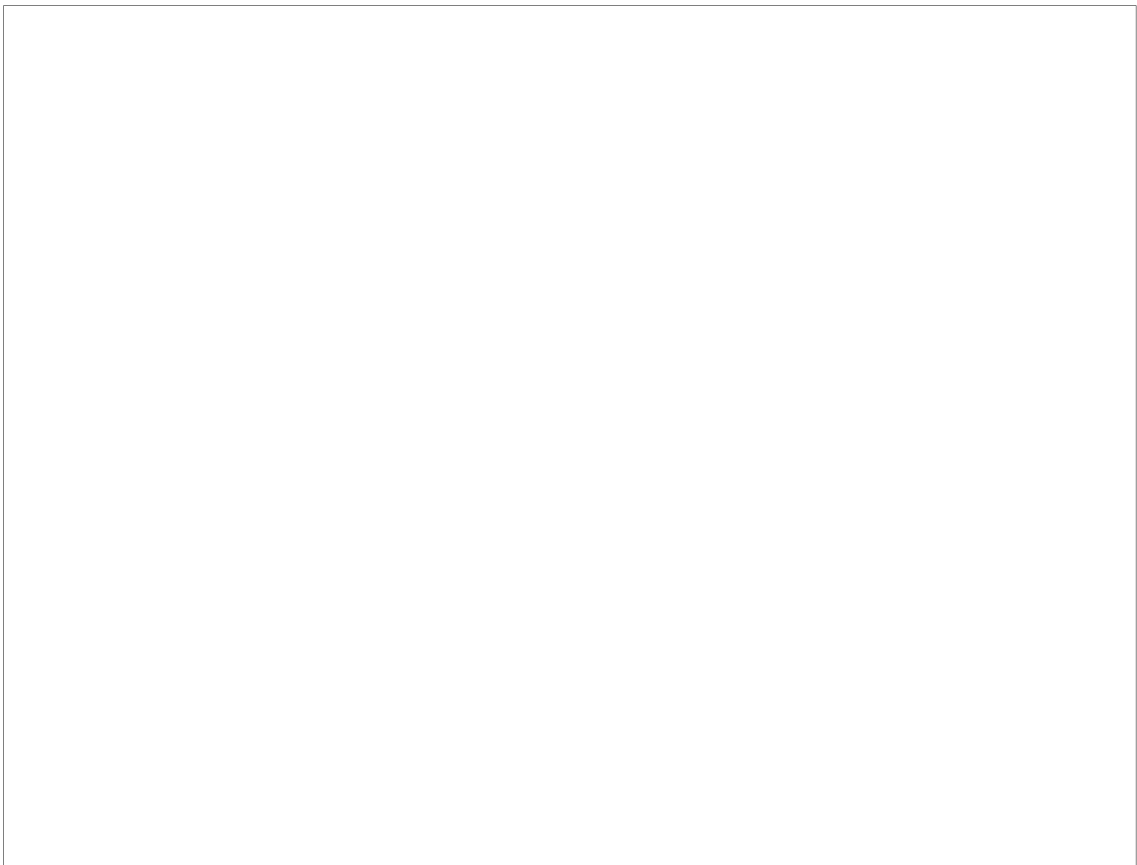
RANK OR TITLE: Master Engineer

ARM: Unknown

25X1



LAST KNOWN ASSIGNMENT: He was a general project manager in the Investment Supply and Designing Bureau (Biuro Projektowania i Dostaw Inwestycyjnych), formerly the Special Projects Bureau (Biuro Projektow Budownictwa Specjalnego), in WARSAW.



25X1

CONFIDENTIAL

CONFIDENTIAL

-22-



25X1

NAME: HAN, Zdzislaw

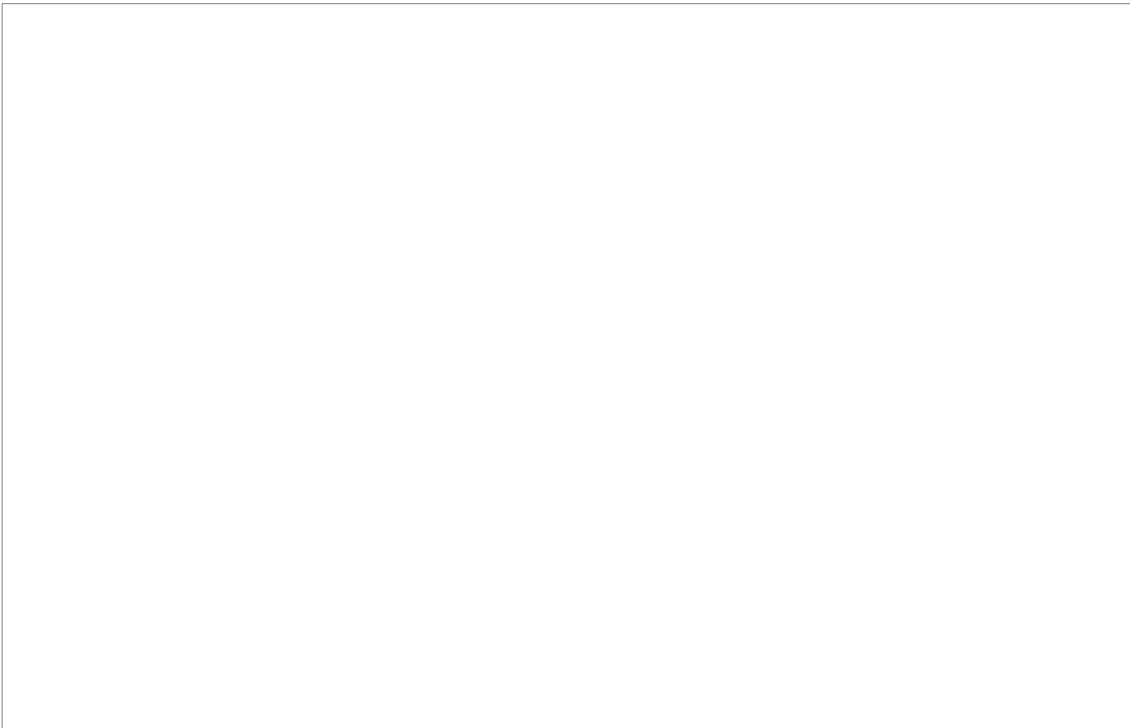
RANK OR TITLE: Master Engineer

ARM: Unknown



25X1

LAST KNOWN ASSIGNMENT: Chief of the Construction Engineering Division (Dzial Konstrukcyjno-budowlany) of the Investment Supply and Designing Bureau (Biuro Projektowania i Dostaw Inwestycyjnych), formerly the Special Projects Bureau (Biuro Projektow Budownictwa Specjalnego), in WARSAW.



25X1

CONFIDENTIAL

CONFIDENTIAL

-23-



25X1

NAME: HARATYM, Franciszek

RANK OR TITLE: Master Engineer

ARM: Unknown



25X1

LAST KNOWN ASSIGNMENT: He was a general project manager in the Investment Supply and Designing Bureau (Biuro Projektowania i Dostaw Inwestycyjnych), formerly the Special Projects Bureau (Biuro Projektow Budownictwa Specjalnego), in WARSAW.

25X1



CONFIDENTIAL

CONFIDENTIAL

-24-



25X1

NAME: JABLONSKI, Stanislaw

RANK OR TITLE: Master Engineer

ARM: Unknown



25X1

LAST KNOWN ASSIGNMENT: He was a section chief in the Technical Division, T-4, of the Investment Supply and Designing Bureau (Biuro Projektowania i Dostaw Inwestycyjnych), formerly the Special Projects Bureau (Biuro Projektow Budownictwa Specjalnego), in WARSAW. 25X1



CONFIDENTIAL

CONFIDENTIAL

-25-



25X1

NAME: JAKUBCWSKI, (fnu)

RANK OR TITLE: Doctor of Engineering

ARM: Unknown



25X1

LAST KNOWN ASSIGNMENT: He was a general project manager in the Investment Supply and Designing Bureau (Biuro Projektowania i Dostaw Inwestycyjnych), formerly the Special Projects Bureau (Biuro Projektow Budownictwa Specjalnego), in WARSAW.



25X1

CONFIDENTIAL

CONFIDENTIAL

-26-



25X1

NAME: KARWICKI, (fnu)

RANK OR TITLE: Master Engineer

ARM: Unknown

25X1



LAST KNOWN ASSIGNMENT: He worked as a general project manager in the Investment Supply and Designing Bureau (Biuro Projektowania i Dostaw Inwestycyjnych), formerly the Special Projects Bureau (Biuro Projektow Budownictwa Specjalnego), in WARSAW.

25X1



CONFIDENTIAL

CONFIDENTIAL

-27-



25X1

NAME: KOMAR, Edward

RANK OR TITLE: Master
Engineer

ARM: Unknown



25X1

LAST KNOWN ASSIGNMENT: He was chief of the Technical Construction Division (Dzial Techniczny - Konstrukcji) of the Investment Supply and Designing Bureau (Biuro Projektowania I Dostaw Inwestycyjnych), formerly the Special Projects Bureau (Biuro Projektow Budownictwa Specjalnego), in WARSAW.

25X1



CONFIDENTIAL

CONFIDENTIAL

-28-



25X1

NAME: MICHALOWSKA, Irena

RANK OR Master Engineer ARM: N/A
TITLE: and Section Director



25X1

25X1

LAST KNOWN ASSIGNMENT: She was a section chief in the T-4 Technical Division of the Investment Supply and Designing Bureau (Biuro Projektowania i Dostaw Inwestycyjnych), formerly the Special Projects Bureau (Biuro Projektow Budownictwa Specjalnego), in WARSAW.



CONFIDENTIAL

CONFIDENTIAL

-29-



25X1

NAME: MICHALOWSKI, Mieczyslaw

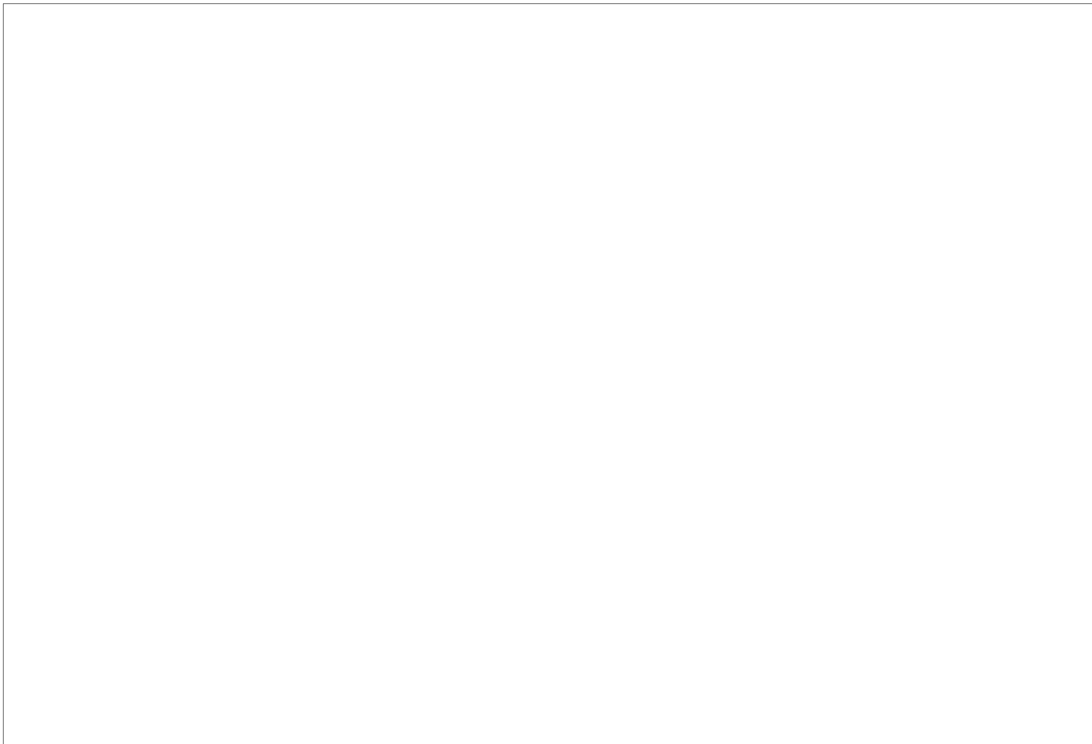
RANK OR TITLE: Engineer

ARM: N/A



25X1

LAST KNOWN ASSIGNMENT: He was a section director in the General Technical Division, T-2 of the Investment Supply and Designing Bureau (Biuro Projektowania i Dostaw Inwestycyjnych), formerly the Special Projects Bureau (Biuro Projektow Budownictwa Specjalnego), in WARSAW.



25X1

CONFIDENTIAL

CONFIDENTIAL

-30-



25X1

NAME: MIKULA, Kazimierz

RANK OR TITLE: Main Director

ARM: Unknown



25X1

LAST KNOWN ASSIGNMENT: Main Director (Dyrektor Naczelny) of the Investment Supply and Designing Bureau (Biuro Projektowania i Dostaw Inwestycyjnych), formerly the Special Projects Bureau (Biuro Projektow Budownictwa Specjalnego), in WARSAW.

25X1



CONFIDENTIAL

CONFIDENTIAL

-31-



25X1

NAME: MURKOWSKI, Jozef

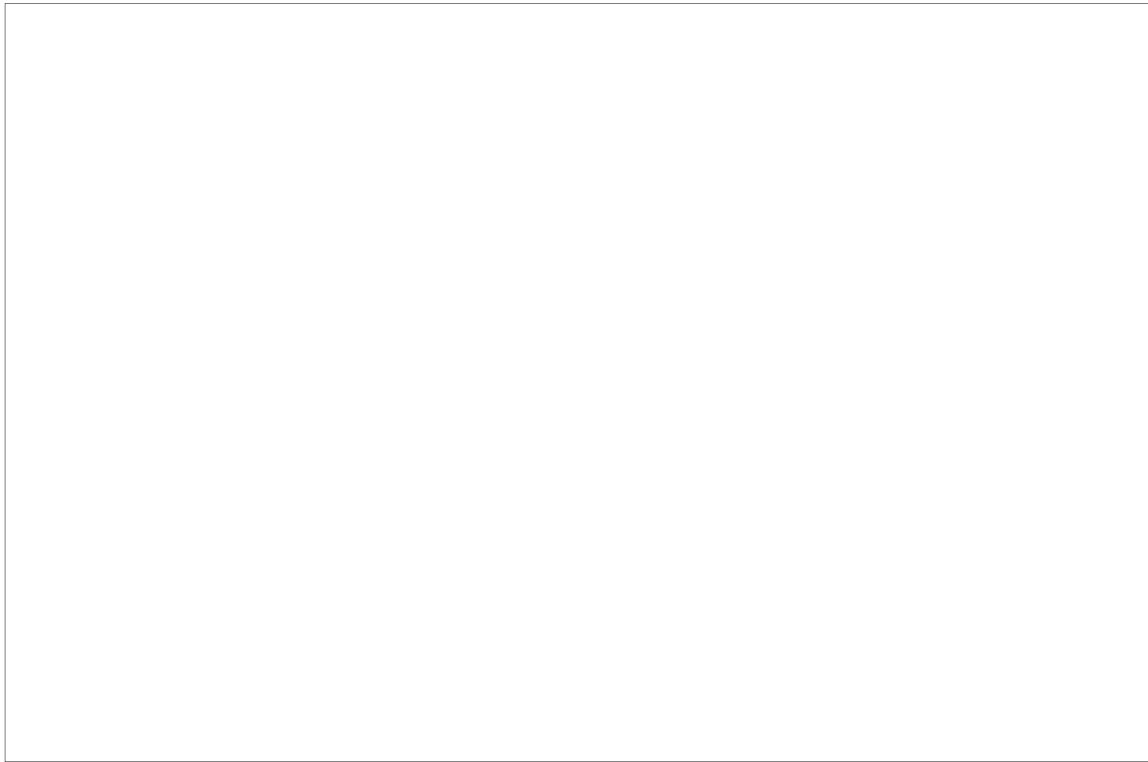
RANK OR TITLE: Engineer

ARM: Unknown



25X1

LAST KNOWN ASSIGNMENT: He worked as assistant to the chief of the Construction Realization Division (Zastepca Szefa Dzialu Realizacji Dostaw) in the Investment Supply and Designing Bureau (Biuro Projektowania i Dostaw Inwestycyjnych), formerly the Special Projects Bureau (Biuro Projektow Budownictwa Specjalnego), in WARSAW. 25X1



CONFIDENTIAL

CONFIDENTIAL

25X1

-32-



NAME: PIEKUTOWSKI, Jerzy

RANK OR Chief Engineer
TITLE:

ARM: Unknown



25X1

LAST KNOWN ASSIGNMENT: Deputy director for technical affairs (Zastępca Dyrektora do Spraw Technicznych) and chief engineer of the Investment Supply and Designing Bureau (Biuro Projektowania i Dostaw Inwestycyjnych), formerly the Special Projects Bureau (Biuro Projektów Budownictwa Specjalnego), in WARSAW.

25X1



CONFIDENTIAL

CONFIDENTIAL

-33-



25X1

NAME: PIETKIEWICZ, (fnu)

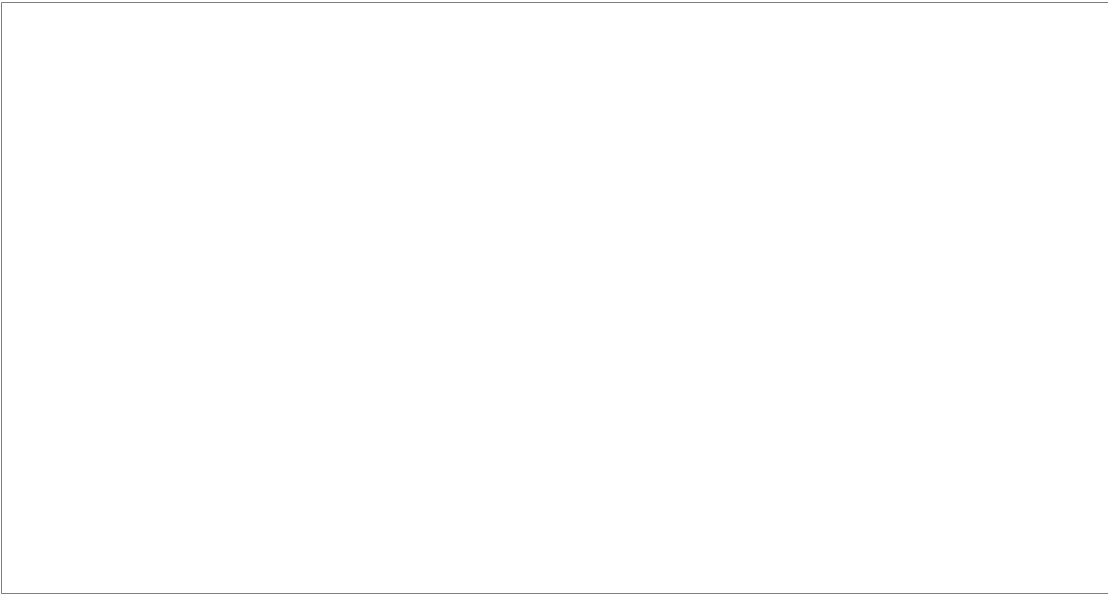
RANK OR TITLE: Master
Engineer

ARM: N/A



25X1

LAST KNOWN ASSIGNMENT: He was chief of the Library Section of the Special Projects Bureau (Szef Działu Studiów Biura Projektów Budownictwa Specjalnego), in WARSAW.



25X1

CONFIDENTIAL

CONFIDENTIAL

-34-



25X1

NAME: PIETRZKIEWICZ, Tadeusz

RANK OR TITLE: Master
Engineer

ARM: Unknown



25X1

LAST KNOWN ASSIGNMENT: He was director of the Automation Division (Dzial Automatyzacji) of the Investment Supply and Designing Bureau (Biuro Projektowania i Dostaw Inwestycyjnych), formerly the Special Projects Bureau (Biuro Projektow Budownictwa Specjalnego), in WARSAW.



25X1

CONFIDENTIAL

CONFIDENTIAL

-35-



25X1

NAME: RATZ, Marcin

RANK OR TITLE: Master Engineer

ARM: Unknown



25X1

LAST KNOWN ASSIGNMENT: He was a general project manager in the Investment Supply and Designing Bureau (Biuro Projektowania i Dostaw Inwestycyjnych), formerly the Special Projects Bureau (Biuro Projektow Budownictwa Specjalnego), in WARSAW.

25X1

CONFIDENTIAL

CONFIDENTIAL

-36-



25X1

25X1

NAME: ROKICKI, Jerzy

RANK OR TITLE: Engineer

ARM: Unknown



LAST KNOWN ASSIGNMENT: He worked as assistant to the chief of the Automation Division of the Investment Supply and Designing Bureau (Biuro Projektowania i Dostaw Inwestycyjnych), formerly the Special Projects Bureau (Biuro Projektow Budownictwa Specjalnego), in WARSAW. 25X1



CONFIDENTIAL

CONFIDENTIAL

-37-



25X1

NAME: SOCHACKI, (fnu)

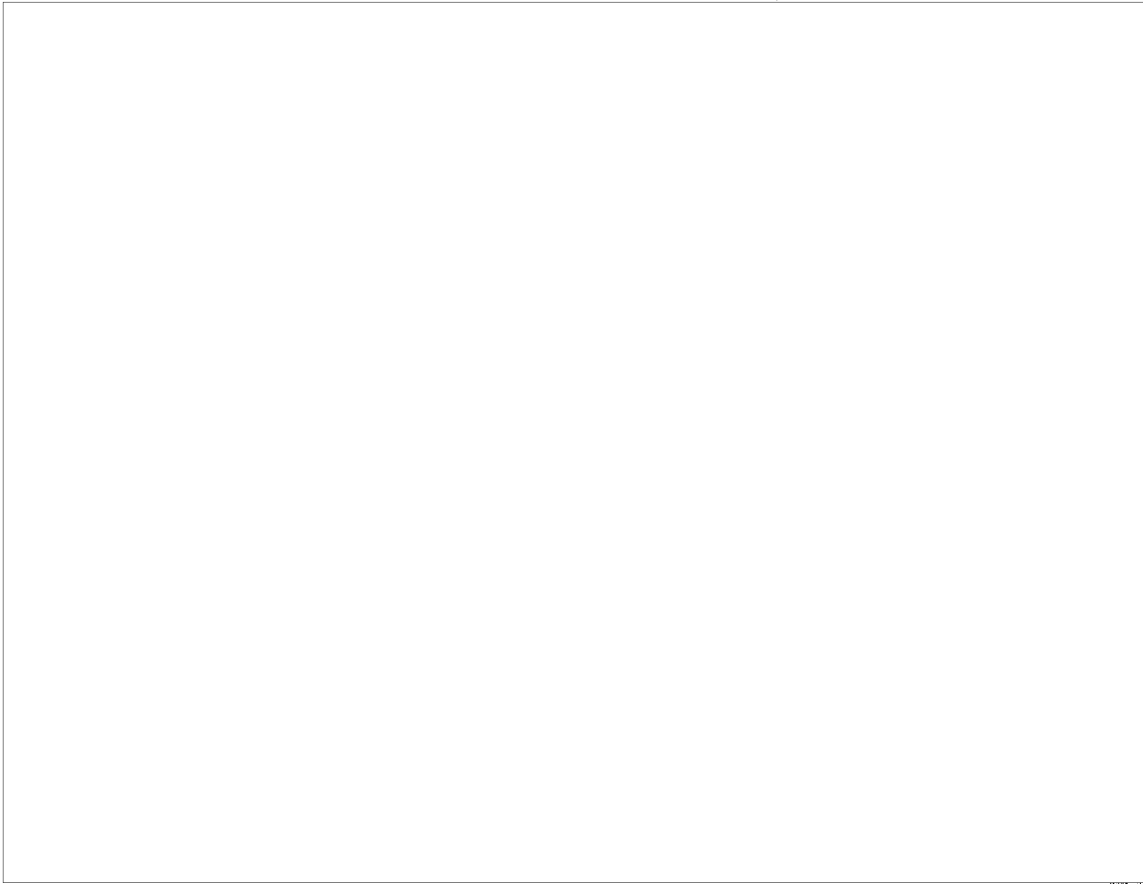
RANK OR TITLE: Master Engineer

ARM: Unknown



25X1

LAST KNOWN ASSIGNMENT: He was a general project manager in the Investment Supply and Designing Bureau (Biuro Projektowania i Dostaw Inwestycyjnych), formerly the Special Projects Bureau (Biuro Projektow Budownictwa Specjalnego), in WARSAW. 25X1



CONFIDENTIAL

CONFIDENTIAL

-38-



25X1

NAME: STANKIEWICZ, (fnu)

RANK OR TITLE: Chief of Section

ARM: N/A



25X1

LAST KNOWN ASSIGNMENT: He was chief of the Administration Section of the Special Projects Bureau (Szef Działu Administracyjnego Biura Projektów Budownictwa Specjalnego), in WARSAW.

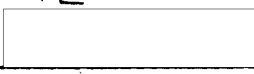
25X1



CONFIDENTIAL

CONFIDENTIAL

-39-



25X1

NAME: STOLAREK, (fnu)

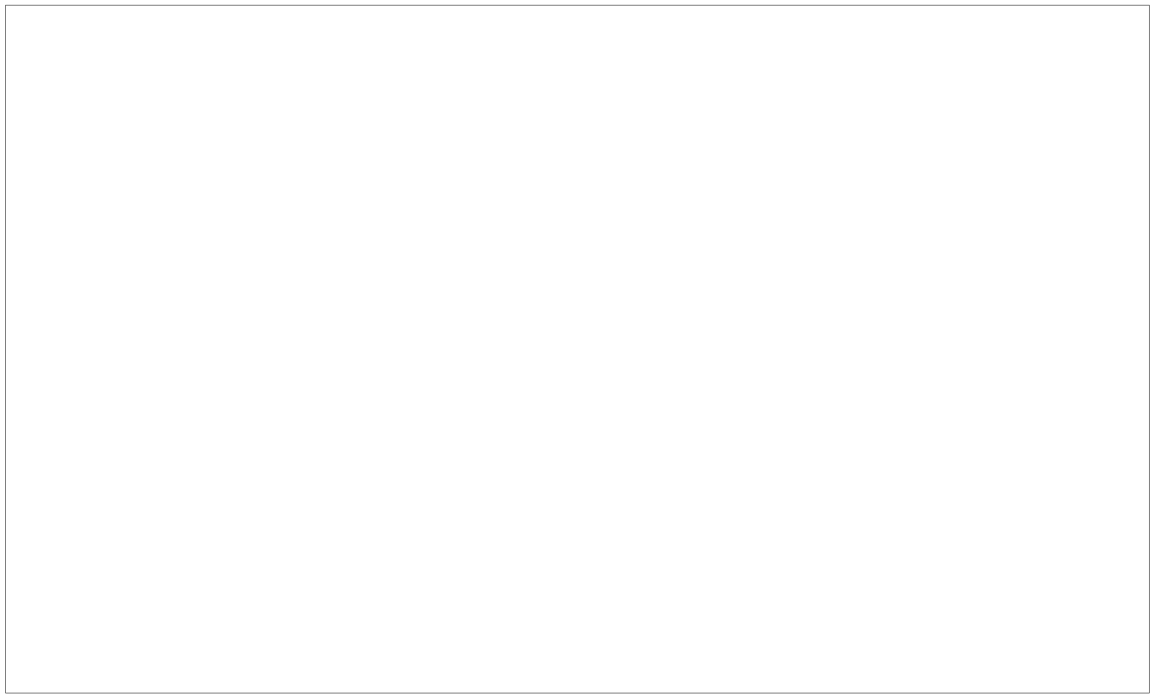
RANK OR TITLE: Master Engineer

ARM: Unknown

25X1



LAST KNOWN ASSIGNMENT: He was a general project manager (generalny projektant) in the Investment Supply and Designing Bureau (Biuro Projektowania i Dostaw Inwestycyjnych), formerly the Special Projects Bureau (Biuro Projektow Budownictwa Specjalnego), in WARSAW. He also lectured at the Warsaw Polytechnic on production organization.



25X1

CONFIDENTIAL

CONFIDENTIAL

-40-



25X1

NAME: SUSZYCKI, Tadeusz

RANK OR TITLE: Master Engineer

ARM: Unknown



25X1

LAST KNOWN ASSIGNMENT: He worked as director of the Machined Products Division of the Investment Supply and Designing Bureau (Biuro Projektowania i Dostaw Inwestycyjnych), formerly the Special Projects Bureau (Biuro Projektow Budownictwa Specjalnego), in WARSAW.



25X1

CONFIDENTIAL

CONFIDENTIAL

-41-



25X1

NAME: SWIECKI, Jerzy

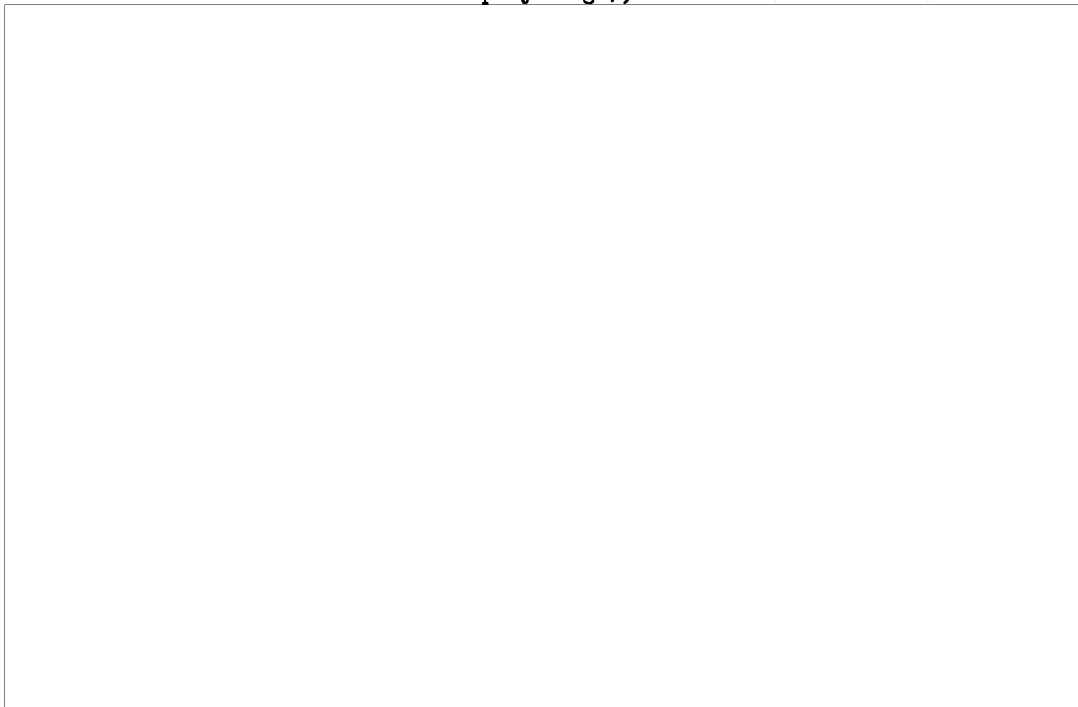
RANK OR TITLE: Master Engineer

ARM: Unknown



25X1

LAST KNOWN ASSIGNMENT: Chief of the Construction Realization Division (Szeft Dzialu Realizacji Dostaw) of the Investment Supply and Designing Bureau (Biuro Projektowania i Dostaw Inwestycyjnych), formerly the Special Projects Bureau (Biuro Projektow Budownictwa Specjalnego), in WARSAW.



25X1

CONFIDENTIAL

CONFIDENTIAL

-42-



25X1

NAME: SZCZEKLIK, (fnu)

RANK OR TITLE: Master Engineer

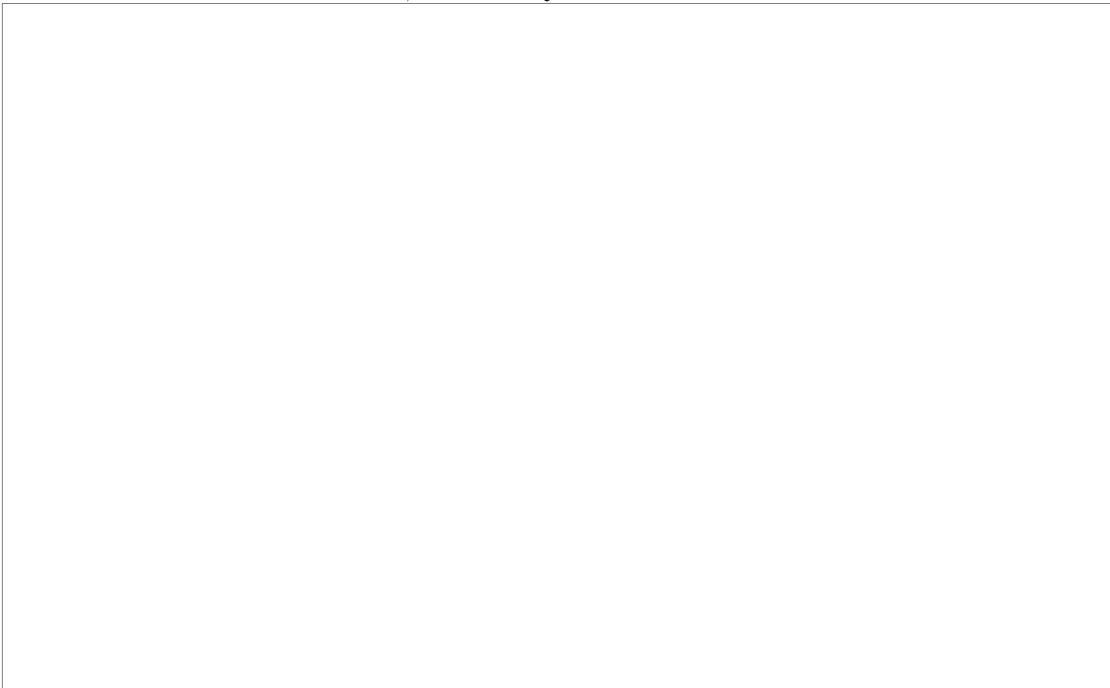
ARM: Unknown



25X1

LAST KNOWN ASSIGNMENT: He was director of the Technical Division, T-1, of the Investment Supply and Designing Bureau (Biuro Projektowania i Dostaw Inwestycyjnych), formerly the Special Projects Bureau (Biuro Projektow Budownictwa Specjalnego), in WARSAW.

25X1



CONFIDENTIAL

CONFIDENTIAL

-43-



25X1

NAME: WINNICKI, Jerzy

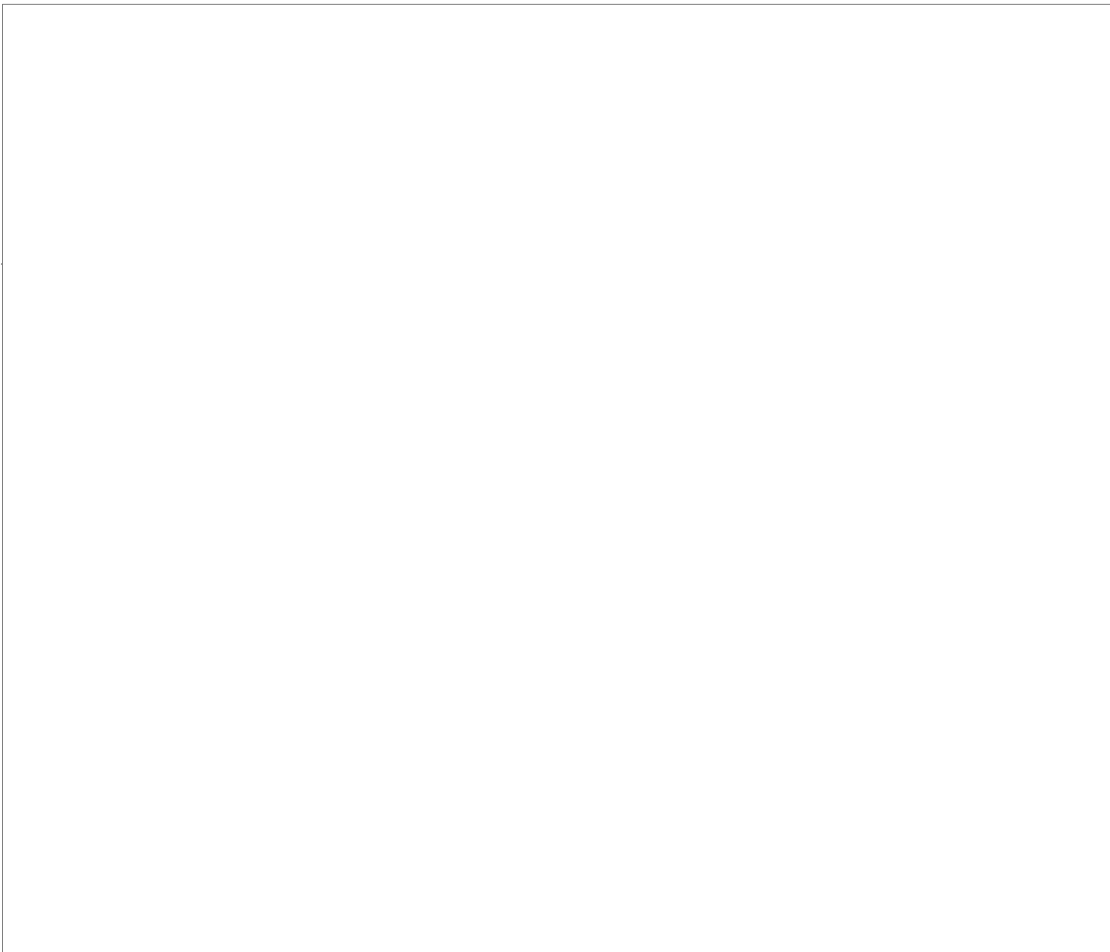
RANK OR TITLE: Engineer

ARM: Unknown



25X1

LAST KNOWN ASSIGNMENT: He was a section director in the Technical Division, T-4, of the Investment Supply and Designing Bureau (Biuro Projektowania i Dostaw Inwestycyjnych), formerly the Special Projects Bureau (Biuro Projektow Budownictwa Specjalnego), in WARSAW.



25X1

CONFIDENTIAL

CONFIDENTIAL

-44-



25X1

NAME: ZAWISLAK, (fnu) RANK OR Director of ARM: Unknown
TITLE: the General Engineering Division



25X1

LAST KNOWN ASSIGNMENT: Director of the General Engineering Division (Kierownik Działu Ogólnego) of the Investment Supply and Designing Bureau (Biuro Projektowania i Dostaw Inwestycyjnych), in WARSAW.



25X1

CONFIDENTIAL

CONFIDENTIAL

-45-



25X1

NAME: ZYCHOWICZ, Andrzej

RANK OR TITLE: Engineer

ARM: Unknown

25X1



LAST KNOWN ASSIGNMENT: He worked as the director of the Machined Products Section in the Investment Supply and Designing Bureau (Biuro Projektowania i Dostaw Inwestycyjnych), formerly the Special Projects Bureau (Biuro Projektow Budownictwa Specjalnego), in WARSAW. 25X1



CONFIDENTIAL

CONFIDENTIAL

-46-

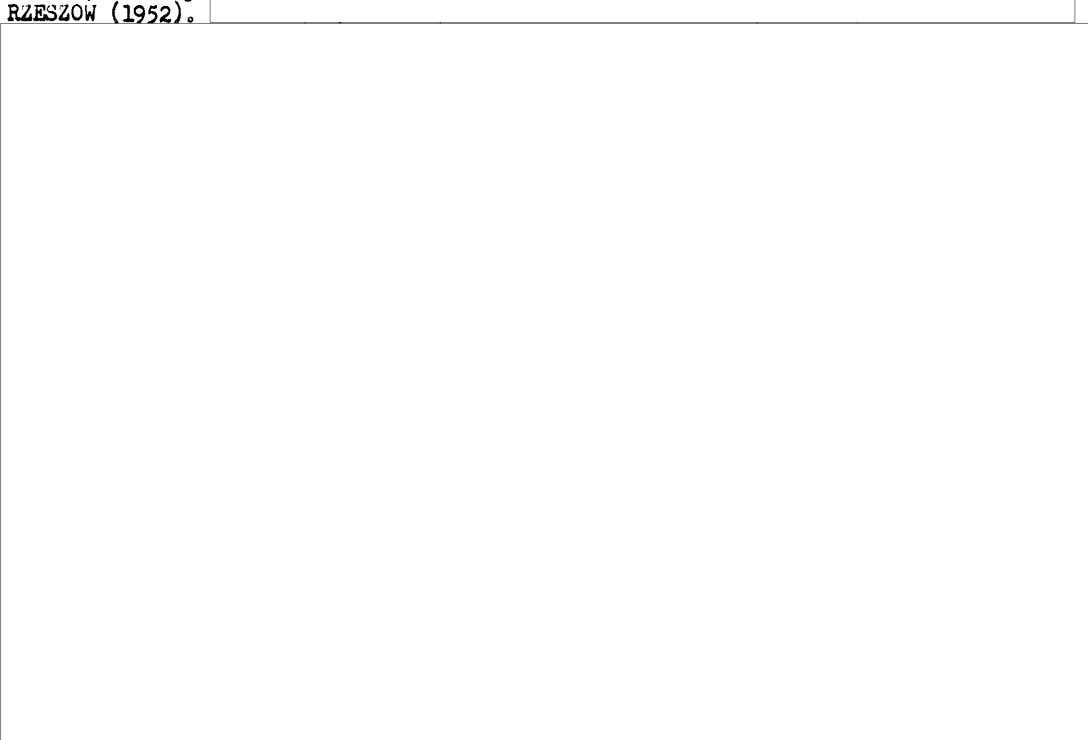


25X1

COMMENTS

1. During this period of time, the bureau had worked on such "S" factories as the Tank Engine Factory in the Wola District of WARSAW (1951); rebuilding of the Ursus Mechanical Works in WARSAW (1947); the Ammunition Factory in SKARZYSKO KAMIENNA (1946); the Armament Factory in KIELCE (1947); the Armament Factory at STALOWA WOLA (1948); the Zeran Automobile Factory in WARSAW (1952); factory (name unknown) in GORZOW, which produced tank and tractor parts (1947); and the Airplane Factory in RZESZOW (1952).

25X1



CONFIDENTIAL

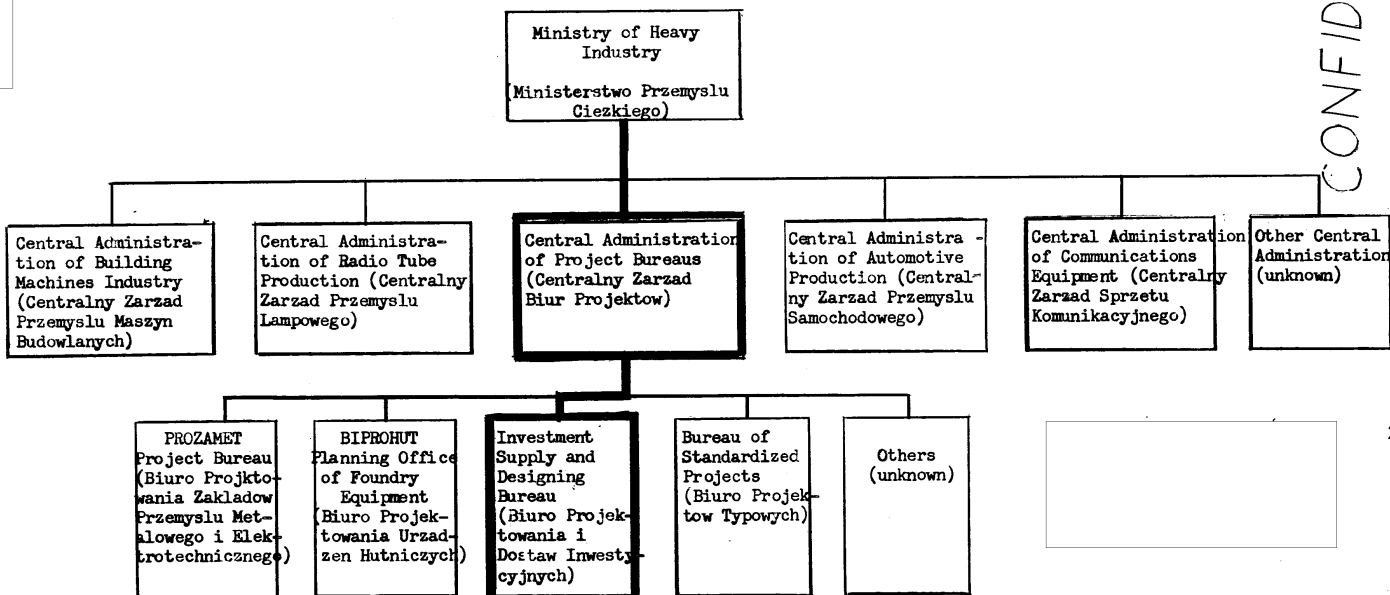
ANNEX A

LOCATION OF THE INVESTMENT SUPPLY AND DESIGNING BUREAU IN THE OVER-ALL ORGANIZATION OF THE METALLURGICAL AND ELECTRICAL INDUSTRY, IN POLAND

CONFIDENTIAL

CONFIDENTIAL

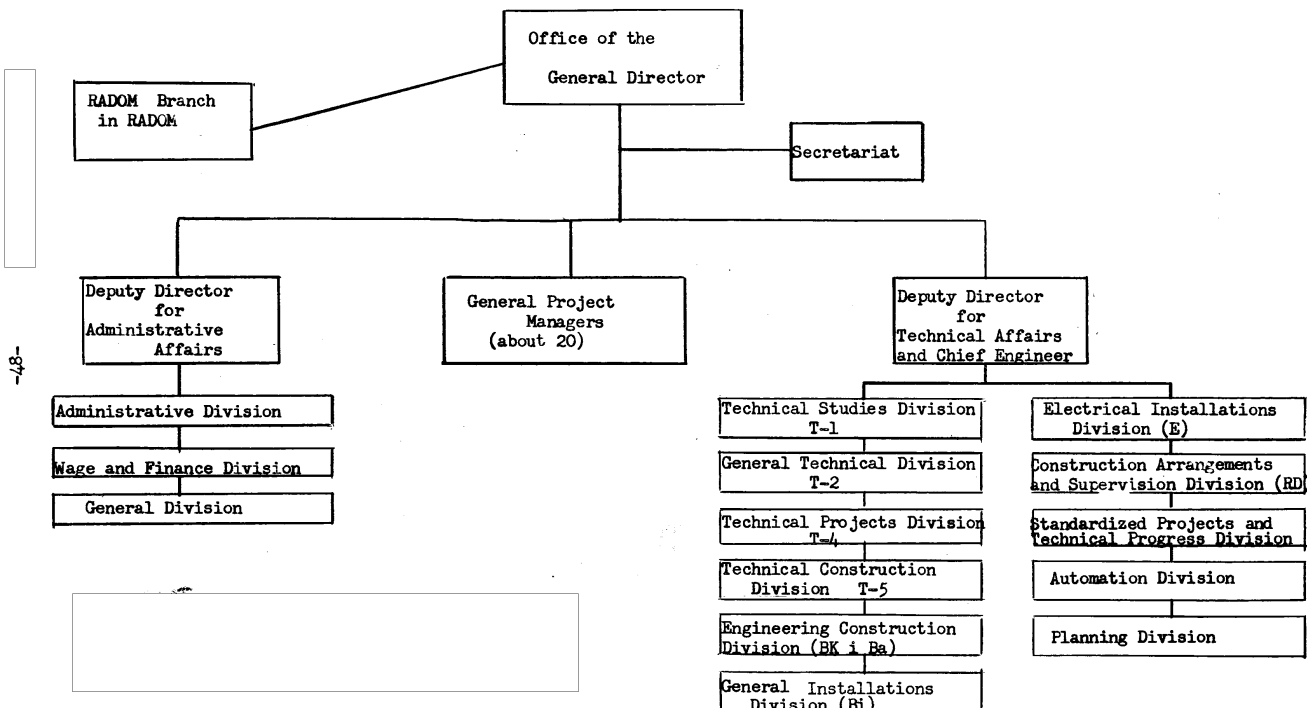
25X1



25X1

ANNEX B

ORGANIZATION OF THE INVESTMENT SUPPLY AND DESIGNING BUREAU IN WARSAW, POLAND



CONFIDENTIAL

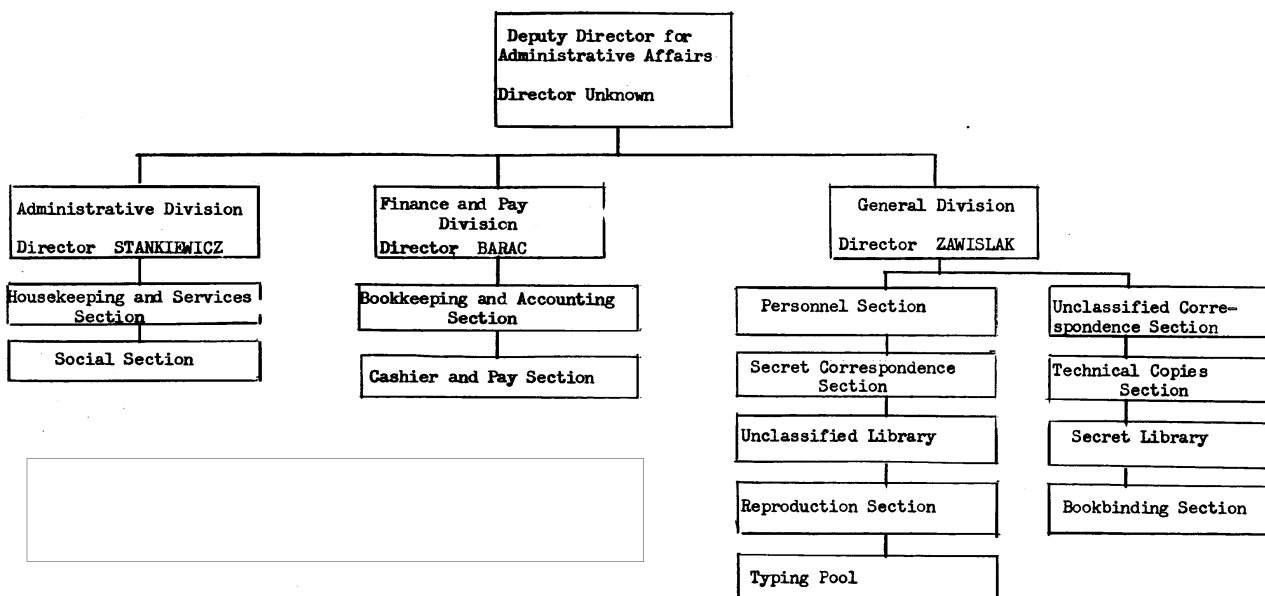
CONFIDENTIAL

25X1

25X1

-48-

ANNEX C
ORGANIZATIONAL CHART OF THE SECTIONS SUBORDINATE TO THE DEPUTY DIRECTOR FOR ADMINISTRATIVE AFFAIRS
IN THE INVESTMENT SUPPLY AND DESIGNING BUREAU IN WARSAW, POLAND

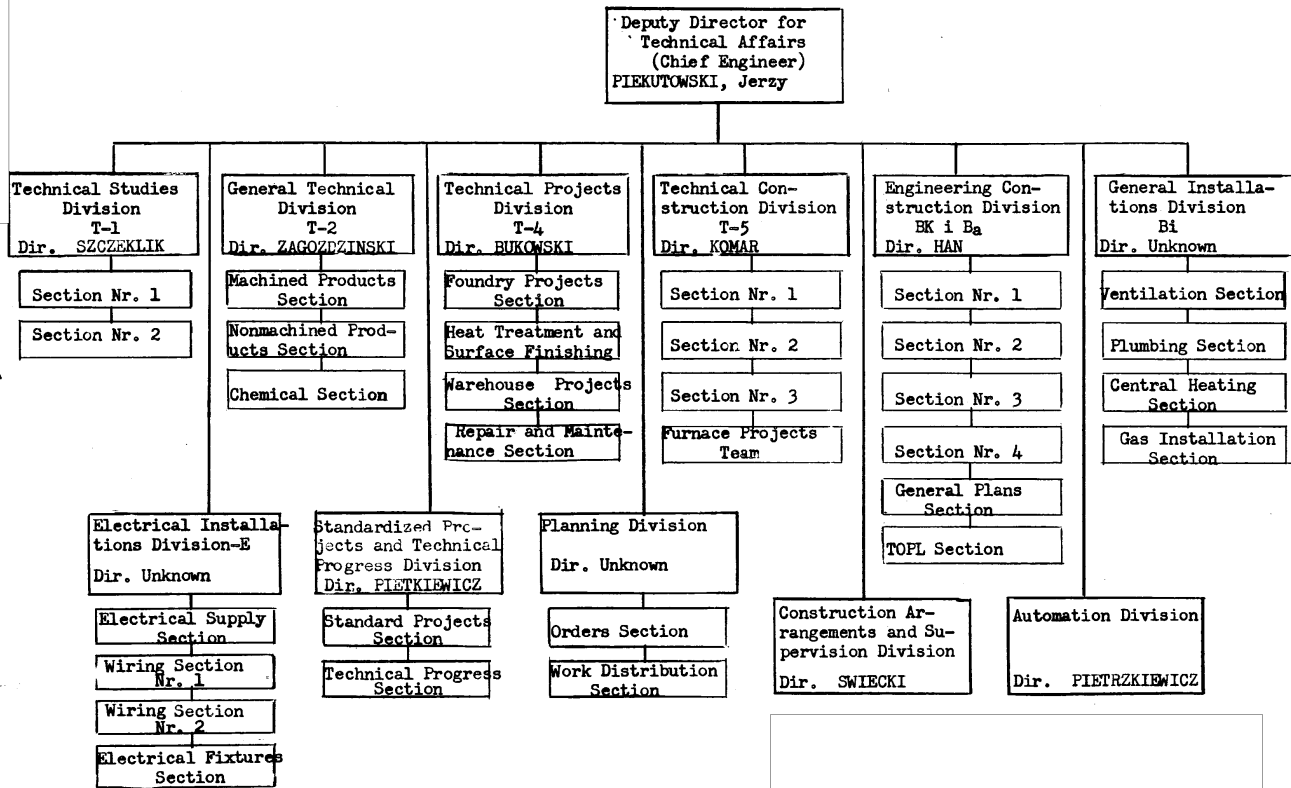


CONFIDENTIAL

CONFIDENTIAL

ANNEX D

ORGANIZATIONAL CHART OF THE DIVISIONS SUBORDINATE TO THE DEPUTY DIRECTOR FOR TECHNICAL AFFAIRS IN THE INVESTMENT SUPPLY AND DESIGNING BUREAU IN WARSAW, POLAND



25X1

CONFIDENTIAL

CONFIDENTIAL

CONFIDENTIAL

25X1