

CCA

INFORMATION REPORT INFORMATION REPORT

CENTRAL INTELLIGENCE AGENCY

This material contains information affecting the National Defense of the United States within the meaning of the Espionage Laws, Title 18, U.S.C. Secs. 793 and 794, the transmission or revelation of which in any manner to an unauthorized person is prohibited by law.

50X1-HUM

S-E-C-R-E-T

COUNTRY	USSR (European USSR)	REPORT	[Redacted]
SUBJECT	Sighting of Possible Microwave Relay and Radar Installations Between Minsk and Moscow	DATE DISTR.	19 November 1959
		NO. PAGES	1
		REFERENCES	RD
DATE OF INFO. PLACE & DATE ACQ.	[Redacted]		50X1-HUM

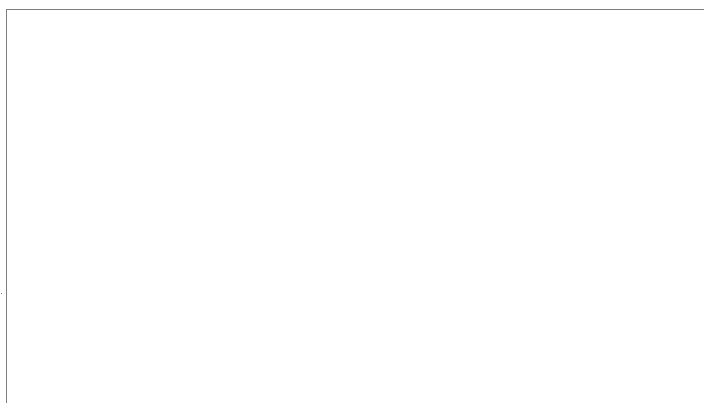
SOURCE EVALUATIONS ARE DEFINITIVE APPRAISAL OF CONTENT IS TENTATIVE

50X1-HUM

A two-page report concerning a possible microwave relay system and a group of unidentified radars, observed while traveling on the Brest-Moscow road.

[Redacted] At the 552 kilometer marker (from Brest) a lattice structure resembling a crane gantry was also observed. [Redacted] sketches of the installations are included.

50X1-HUM



14 DEC 1959 50X1-HUM
S/SUM

1. [Signature] 50X1-HUM

[Signature]

LYK:ML 50X1-HUM

S/COM LASK
PLS LBS

w

S-E-C-R-E-T

50X1-HUM

STATE	X	ARMY	X	NAVY	X	AIR	X	NSA		FBI				
-------	---	------	---	------	---	-----	---	-----	--	-----	--	--	--	--

(Note: Washington distribution indicated by "X"; Field distribution by "#")

INFORMATION REPORT INFORMATION REPORT

SECRET



RUSSIA

50X1-HUM

Scientific

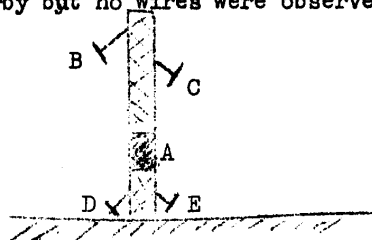
Radar Installations between MINSK and MOSCOW

1. The following structures which were considered to be Radar installations were seen from the road between Minsk and Moscow :

- (a) At the 552 KM stone on the road from Brest to Moscow, situated about half a mile from the road.
A lattice structure resembling a crane gantry.



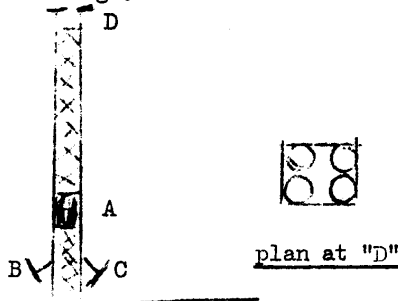
- (b) East of Smolensk at the 741 KM stone from Brest and about 2 miles south of the road.
A lattice structure about 100 feet high.
A hut was nearby but no wires were observed.



not to scale

The portion "A" about a third of the way up was boxed in to a height of some 7 feet; this might have housed equipment ("B", "C", "D" and "E" are circular plates set at an angle and 3 to 4 feet in diameter, supported by a strut. They face approx. East and West.

- (c) At the 874 KM stone from Brest (East of Smolensk) about 100 yards north of the road.
A lattice structure about 100 feet high.
There is a hut nearby



plan at "D"

The portion "A" about a third of the way up is boxed in.
"B" and "C" are circular plates 3 to 4 feet in diameter
"D" is four horizontal plates about 3 to 4 feet in diam.

50X1-HUM

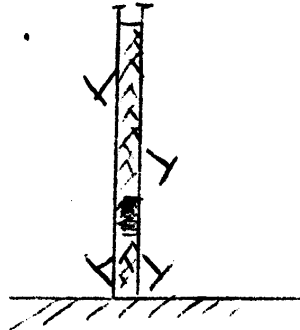


SECRET



- (d) At 970.5 KM stone from Brest (East of Smolensk)
Structure as at (c) above but with additional inclined plates

50X1-HUM



not to scale

- (e) At 1027 KM stone from Brest (about 27 KM west of Moscow)
A line of 7 different types of Radar.
There were none of the types shown in a, b, c, or d, above
but were all variations of the forms below.
The heights were about 12 to 20 feet above the ground. There
were huts in the vicinity.



50X1-HUM

