

CONFIDENTIAL



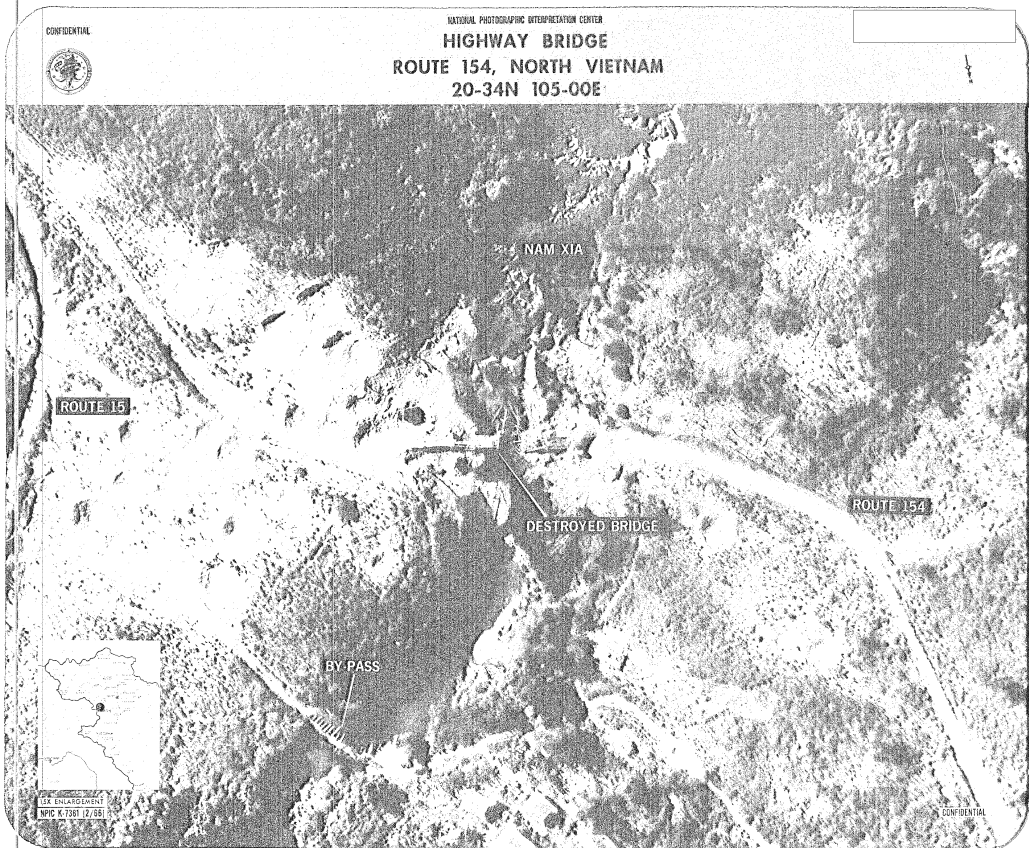
NATIONAL PHOTOGRAPHIC INTERPRETATION CENTER

REF ID: A7381  
NPIC CONTROL NUMBER

REPRODUCTION OF THIS DOCUMENT IN WHOLE OR IN PART IS PROHIBITED EXCEPT WITH THE PERMISSION OF THE OFFICE OF ORIGIN.

NATIONAL SUBSTANTIVE BRIEFING AIDS COLLECTION

RETURN TO: BRIEFING AIDS UNIT



25X1

25X1