

Declassified in Part - Sanitized Copy Approved for Release 2012/11/13 :
CIA-RDP81-01043R001400010003-8

50X1-HUM

Age Denied

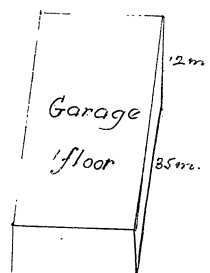
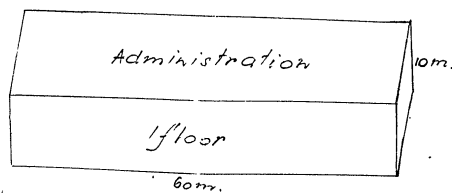
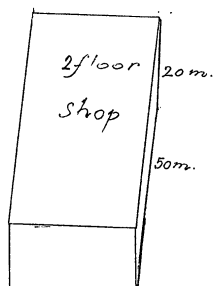
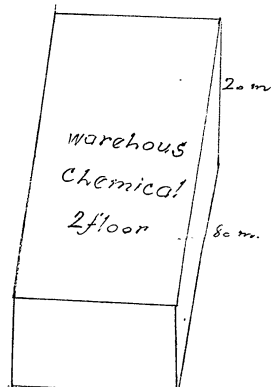
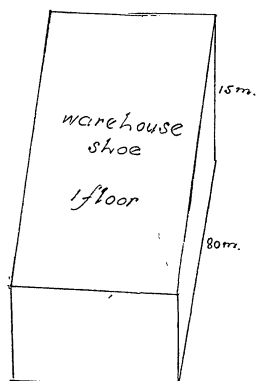
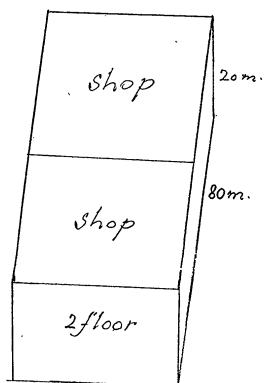
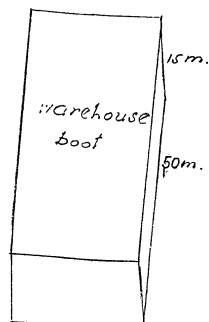
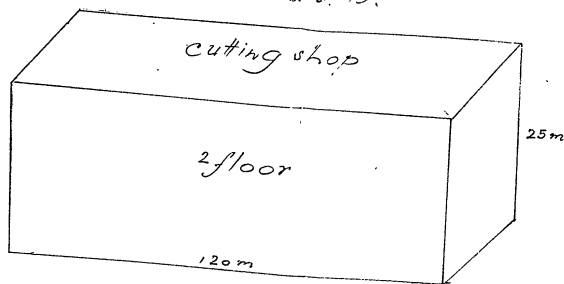
Declassified in Part - Sanitized Copy Approved for Release 2012/11/13 :
CIA-RDP81-01043R001400010003-8

CONFIDENTIAL SEE BOTTOM OF PAGE FOR SPECIAL CONTROLS, IF ANY	
INFORMATION REPORT	
PREPARED AND DISSEMINATED BY CENTRAL INTELLIGENCE AGENCY	
COUNTRY Hungary	This material contains information affecting the National Defense of the United States within the meaning of the Espionage Laws, Title 18, U.S.C. Secs. 793 and 794, the transmission or revelation of which in any manner to an unauthorized person is prohibited by law. 50X1-HUM
SUBJECT Production and Layout of Duna Cipogyar Shoe Factory/Layout of Epitoipari Trust (Building Trust) Budapest (manpower)	
DATE DISTRIBUTED 21 Oct 1957	
NO. OF PAGES 1	NO. OF ENCLS.
SUPPLEMENT TO REPORT #	
THIS IS UNEVALUATED INFORMATION	
<p>the 50X1-HUM</p> <p>largest shoe factory in Hungary, located at Atilla 10, Upjest, Budapest. The plant employed 3,500 workers and produced approximately 1,200,000 pairs of boots and shoes per year. About 400 thousand of these were military boots which were allocated to the Hungarian Army. A part of this production was handed over by the Hungarian Army to the Soviet Occupation Army.</p> <p>2. Leather was imported from Czechoslovakia and East Germany. The finished products, with the exception of the military boots, were primarily sold in Hungary, although sizable quantities were exported to the satellite countries 50X1-HUM</p> <p>Poland approximately 300 thousand pairs of shoes per year.</p> <p>- end -</p> <p>50X1-HUM</p>	
<div style="border: 1px solid black; width: 200px; height: 50px; margin: 0 auto;"></div>	
CONFIDENTIAL	
DISTRIBUTION	STATE
ARMY	NAVY
AIR	

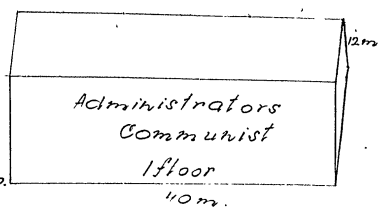
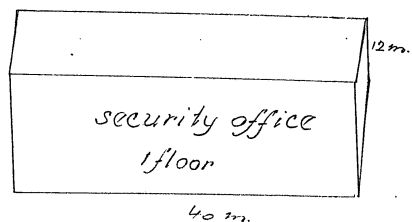
DUNA CIPÓGYA St. IV. Budapest.
Attila st. 10.

All buildings are
brick

50X1-HUM



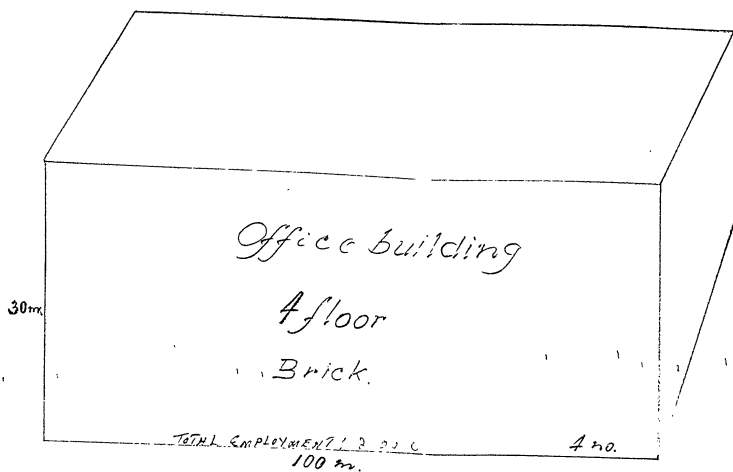
TOTAL EMPLOYMENT: 3,500



Entrance. Attila st. 10.

Attila street

1/2 Építőipari Trószrt Budapest, I. m.



URI STREET

