

STAT

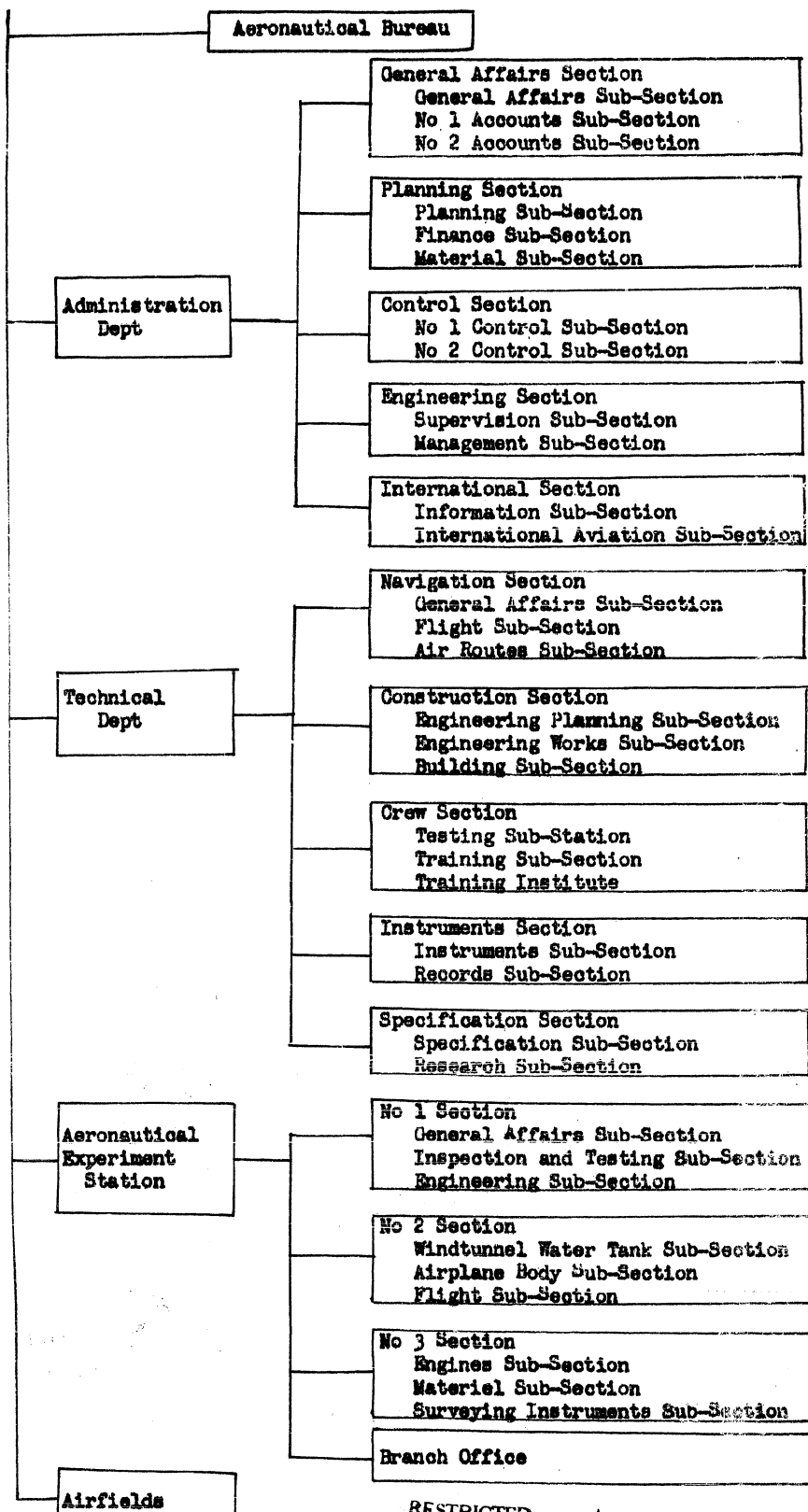
CIVIL AVIATION IN JAPAN AS OF 1939

RESTRICTED

RESTRICTED

AERONAUTICAL BUREAU

TABLE OF ORGANIZATION



RESTRICTED

Source: * Survey of Aviation

RESTRICTED
 REGULAR LINES OF THE JAPAN
 AIRWAYS COMPANY
 (As of Oct 1939)

Line	Distance (km)	Flights	Frequency of Flights	Date of Establishment
Tokyo-Ta- <i>lien</i>	2,131	Tokyo-Nagoya Nagoya-Osaka	3 round trips per day	April 1929
		Osaka-Fukuoka Fukuoka-Taegu		
		Taegu-Seoul Seoul-Pyongyang Pyongyang-Sinuiju Sinuiju- <i>Ta-^{lien}</i> <i>Dairen</i>	1 round trip per day	
Fukuoka-Tai-hoku	1,610	Fukuoka-Naha Naha-Tainoku	1 round trip per day	October 1935
Tokyo-Sapporo	940	Tokyo-Sendai Sendai-Aomori Aomori-Sapporo	1 round trip per day	April 1937
Tokyo-Ch'ang-ch'un	2,320	Tokyo-Fukuoka Fukuoka-Seoul Seoul-Shen-yang Shen-yang-Ch'ang-ch'un	1 round trip per day	June 1937
Seoul-Ta- <i>lien</i>	550	Seoul- <i>Ta-^{lien}</i> <i>Dairen</i>	1 round trip per day	June 1937
Tokyo-Ch'ing-p'ing	2,645	Tokyo-Osaka Osaka-Fukuoka Fukuoka-Ch'ing-tao Ch'ing-tao-T'ien-ching T'ien-ching-Pei-p'ing	1 round trip every other day	October 1938
Fukuoka-Nan-ching	1,220	Fukuoka-Shang-hai Shang-hai-Nan-ching	1 round trip per day	October 1938

RESTRICTED

RESTRICTED
 REGULAR LINES OF THE JAPAN
 AIRWAYS COMPANY
 (As of Oct 1939)

Line	Distance (km)	Flights	Frequency of Flights	Date of Establishment
Tokyo-Ta-lein	2,131	Tokyo-Wagoya	3 round trips per day	April 1929
		Nagoya-Osaka		
		Osaka-Fukuoka	2 round trips per day	
		Fukuoka-Taegu		
		Taegu-Seoul	1 round trip per day	
		Seoul-Pyongyang		
Pyongyang-Sinuiju				
Sinuiju-Dairen				
Fukuoka-Taihoku	1,610	Fukuoka-Naha Naha-Taihoku	1 round trip per day	October 1935
Tokyo-Sapporo	940	Tokyo-Sendai Sendai-Aomori Aomori-Sapporo	1 round trip per day	April 1937
Tokyo-Ch'ang-ch'un	2,320	Tokyo-Fukuoka Fukuoka-Seoul Seoul-Shen-yang Shen-yang-Ch'ang-ch'un	1 round trip per day	June 1937
Seoul-Ta-lien	550	Seoul-Dairen	1 round trip per day	June 1937
Tokyo-Pei-p'ing	2,645	Tokyo-Osaka Osaka-Fukuoka Fukuoka-Ch'ing-tao Ch'ing-tao-T'ien-ching T'ien-ching-Pei-p'ing	1 round trip every other day	October 1938
Fukuoka-Nan-ching	1,220	Fukuoka-Shang-hai Shang-hai-Nan-ching	1 round trip per day	October 1938

RESTRICTED

RESTRICTED
REGULAR LINES OF THE JAPAN
AIRWAYS COMPANY

(As of Oct 1939)

Line	Distance (km)	Flights	Frequency of Flights	Date of Establishment
Tokyo-Palau	4,140	Tokyo-Saipan Saipan-Palau	1 round trip per month	April 1939
Tokyo-Niigata	380	Tokyo-Nagano Nagano-Niigata	1 round trip per month	October 1936
Osaka-Nagano	510	Osaka-Kanazawa Kanazawa-Toyama Toyama-Nagano	1 round trip per day	October 1939
Osaka-Yonago	310	Osaka-Yonago	1 round trip per day	October 1939
Osaka-Kochi	305	Osaka-Tokushima Tokushima-Kochi	1 round trip per day	October 1936
Taiwan Circuit	745	Taihoku-Taichu Taichu-Tainan Tainan-Heito Heito-Taito Taito-Karenko Karenko-Giran Giran-Taihoku	1 round trip per day	October 1936
Tainan-Mako	94	Tainan-Mako	1 round trip per day	October 1936
Seoul-Ch'ongjin	560	Seoul-Humhung Humhung-Ch'ongjin	1 round trip per day	October 1936
Osaka-Beppu	420	Osaka-Takamatsu Takamatsu-Matsuyama Matsuyama-Beppu	1 round trip per day	July 1923

Japan Airways Company
(Dai Nippon Koku Kabushiki Kaisha)
Organised: August 1939
Capital : 100 million yen
Operating Kilometer: 18,822
President: Nakagawa Kenso

Source: A Survey of Aviation

RESTRICTED

RESTRICTED

AERONAUTICAL WIRELESS STATIONS
(as of October 1939)

Name	Call sign	Location
Haneda	JXS, JXG	Tokyo Airfield, Haneda, Kamada Ku, Tokyo
Hakone	JXH	Mishima, Tagata Gun, Shizuoka Ken
Hachijo Jima	JHA, JXT	Ogago Mura, Hachijo Jima, Tokyo Fu
Kanayama	JXK	Kaneda, Hamayama Cho, Suzuka Gun, Mie Ken
Settsu	JXO, JXC	Osaka No. 2 Airfield, Kamitsu Mura, Kawabe Gun, Hyogo Ken
Fukuoka	JXF, JJQ	Najima, Tatara Mura, Kasuya Gun, Fukuoka Ken
Itsuhara	JXI	Itsuhara Cho, Shimoagata Gun, Fukuoka Ken
Tomiya	JXY	Tomiya Mura, Minaminatsuura Gun, Nagasaki Ken
Kagoshima Post Office	JKA, JKB	Tamashita Cho, Kagoshima, Kagoshima Ken
Naha Post Office	JCA, JCX	Tempi Cho, Naha, Okinawa Ken
Sendai	JXQ	Sendai Airfield, Shichiogo Mura, Miyagi Gun, Miyagi Ken
Aomori	JXR	Aomori Airfield, Hajiro, Aomori, Aomori Ken
Sapporo	JXD	Sapporo Airfield, 5-chome, West, 24-Jo North, Sapporo, Hokkaido
Yonago	JXW	Yonago Airfield, Yonago, Fottori Ken
Ulsan	JBM	Pukohong-dong, Ulsan-myon, Kyongsang Nando, Korea
Taegu	JSC	Sinam-dong, Soosung-myon, Kyongsang Nando, Korea
Seoul	JBB	
Sinuiju	JWQ, JWR, JWS	
Chongjin	JWN	Minato-machi, Chongjin, Hamgyong Pukto, Korea
Ta-lien	JDV	Chou-shui-tsu-t'un, Chou-shui-tsu Hui, Kwantung Leased Territory
Taihoku	JFV, JFQ	Kyo Machi, Taihoku, Taiwan

Source: A Survey of Aviation

RESTRICTED

RESTRICTED

PUBLIC AIRFIELDS IN JAPAN, TAIWAN, KOREA, AND KWANTUNG LEASED TERRITORY

(As of October 1939)

Source: A Survey of Aviation

Name	Operated by	Location	Type	Runways	Remarks
Tokyo	Nat'l gov't	Haneda Edomi Cho, Yamada Ku, Tokyo	land	E-W 1,000 m N-S 1,000 m	
Nagoya	Int'l Aero- nautical Ass'n	No 10 Umetatechi, Inenaga Shindenohi- saki, Minato Ku, Nagoya	land	E-W 550 m N-S 750 m	Slips located SE of No 10 Umetatechi ↓
Osaka	Nat'l gov't	Funa-machi, Taisho Ku, Osaka	water		Outside of the Osaka Harbor
Osaka No. 2	"	Kanitsu Mura, Kawabe Gun, Hyogo Ken	land	E-W 800 m N-S 830 m	
Hiroshima	"	Otake Cho, Saeki Gun, Hiroshima Ken	land	E-W 790 m N-S 800 m	Slips located E side of the Fukuoka Wan ↓
Fukuoka No. 1	"	Hata, Washiro Mura, Kasuya Gun, # Fukuoka Ken	land water	E-W 790 m N-S 800 m	Slips located E side of the Fukuoka Wan
Fukuoka No. 2	"	Najima, Tatara Mura, Kasuya Gun Fukuoka Ken	water		Slips located E side of the Fukuoka Wan
Taegu	"	Ipsuk-dong, Haejin- myon, Dalsung-gun, Kyongsang Pukto, Korea	land	E-W 950 m N-S 600 m	
Ulsan	"	SamsanGni, Ulsan- myon, Ulsan-gun, Fukuoka Ken Korea	land	E-W 600 m N-S 600 m	
Seoul	"	Youi-do, Yonggang- myon, Koyang-gun, Kyonggi-do, Korea	land	E-W 600 m N-S 600 m	
Sinuiju	"	Pungsu-dong, Kwang- sung-myon, Uiju-gun, Pyongan Pukto	land	600 x 200 m	
Tai-lieu	"	Chou-shui-t'un, Kuo-chai-t'un, and Pao-yai-t'un, Chou- shui-tau Hui, Kwantung Leased Territory	land	600 m diameter	Circular landing field

RESTRICTED

RESTRICTED

PUBLIC AIRFIELDS IN JAPAN, TAIWAN, KOREA, AND KWANTUNG LEASED TERRITORY
(As of October 1939)

Source: A Survey of Aviation

Name	Operated by	Location	Type	Runways	Remarks
Sendai	Nat'l gov't	Shichigo Mura, Miyagi Gun, Miyagi Ken	land	E-W 750 m N-S 820 m	
Aikoku Nagano	Nagano City	Kawaishinden and Inaba, Nagano	land	E-W 600 m N-S 200 m	
Toyama	Construction Committee	Kuragaki Mura, Nehi Gun, Toyama Ken	land	700m x 250 m E-W	
Aikoku Kanazawa	Kanazawa City	Kawakita Mura, Kahoku Gun, Ishikawa Ken	land	E-W 700 m N-S 620 m	
Yonago	Yonago City		land		
Matsue	Matsue City	Nada Machi, Matsue, Shimane Ken	water		
Miyakonojo	Miyakonojo City	Isoichi Mura, Kitamorokata Gun, Miyazaki Ken	land	700m x 300 m 600m x 300 m	
Naha	Nat'l gov't	Toma, Oroku Mura, Shimajiri Gun, Okinawa Ken	land	E-W 850 m N-S 920 m	
Taihoku	Nat'l gov't	Matsuyama Sho, Shichisei Gun, Taihoku Shu, Taiwan	land	E-W 900 m N-S 700 m	
Giran	Giran City	Kinrikuketsu, Giran Gai, Giran Gun, Taihoku Shu, Taiwan	land	E-W 800 m N-S 700 m	
Taichu	Taichu Shu	Hokokan, Daiga Sho, Toyohara Gun, Taichu Shu, and Kokan, Sha roku Sho, Taihu Gun, Taichu Shu, Taiwan	land	E-W 1,200 m N-S 500 m	
Tainan	Tainan Shu	Ansu and Jusanko, Einei Sho, Nitoso Gun, Tainan Shu, Taiwan	land	E-W 700 m N-S 1,000 m	

RESTRICTED

RESTRICTED

PRIVATE AIRFIELDS IN JAPAN

(As of October 1939)

Name	Operated by	Location	Type	Runways
Nakajima Oi	Nakajima Aircraft Company	Oiminamihamakawa Cho Shinagawa Ku, Tokyo	Water	
Kawanishi-Naruo	Kawanishi Aircraft Company	Naruo Mura, Muko Gun, Hyogo Ken	Water	
Kinosaki	Japan Sea Air Transport Co.	Kinosaki Cho, Hyogo Ken	Water	Slips located on the Maruyama-gawa
Sakai-Ohama	Japan Aviation Research Institute	Shinkoen, Ohamaminami Cho, Sakai Shi, Osaka Fu	Water	slips 1,000 sq.km.
Kochi	Kochi Shimbunsha	Yokohama, Nagahama Cho, Agawa Gun, Kochi Ken	Water	E-W 700 m N-S 650 m
Miyajima	Emi Shigemi	Tatssumigahama, Ono Mura, Saeki Gun, Hiro- shima Ken	Water	500m x 300m
Tateyanadera	Tokuda Goichiro	Minamishonai Mura, Hamana Gun, Shizu- oka Ken	Water	Hamana Ko (Lake) 2,200 m x 400 m
Kiriu Aikoku	Imperial Aeronautic Society of Japan	Shikanogawa, Kasagake Mura, Mitta Gun, Oama Ken	land	E-W 435 m N-S 430 m
Koromogahara	Kumasaki Sojiro	Koromo, Koromo Machi, Nishikamo Gun Aichi Ken	land	E-W 500 m N-S 220 m
Otsu	Fujimoto Tadashi	Baba, Otsu Shiga Ken	land Water	1,000 m 500 m
Chuetsu	Imperial Aero-nautical Society of Japan	Chita Mura, Kita- uonuma Gun, Niigata Ken	land	850 m x 400 m
Yamanashi	Aeronautical Research Ass'n, Yamanashi Reservists Ass'n	Tamagawa, Tamahata Mura, Nakakoma Gun, Yamanashi Ken	land	NW-SE 500 m
Shiga	Japan Students Marine Flying Group	Asenouchi, Shimosaka- moto Mura Gun Shiga Ken	Water	2,000 m x 1,000 m

RESTRICTED

RESTRICTED

PRIVATE AIRFIELDS IN JAPAN

(As of October 1939)

Name	Operated by	Location	Type	Runways
Saitama No. 1	Imperial Aeronautical Society of Japan	Muneoka Mura, Iruma Gun, Saitama Ken	land	E-W 400 m N-S 800 m
Hanshin	Hanshin Aeronautical Institute	Ota, Taisho Mura, Nakakawachi Gun, Osaka Fu	land	E-W 810 m N-S 525 m
Mogami	Mamurokawa Mura, Mogami Gun Yamagata Ken	Mamurokawa Mura, Mogami Gun, Yamagata Ken	land	E-W 600 m N-S 400 m

Source: A Survey of Aviation

RESTRICTED

Company	Line & Route	Distance	STATISTICS ON AIR TRANSPORTATION FOR 1938			Freight		Mail	
			Flight Kilo- meters	Number Passengers	Kilo- meters	Weight	Metric tons-KM	Weight	Metric tons-KM
	Tokyo-Ta-lien Line	101	48			mt		mt	
	Tokyo-Nagoya	296	293,040	4,225	1,250,600	10,439	3,090	39,707	11,753
	Nagoya-Osaka	139	143,031	4,322	600,758	15,229	2,117	43,207	6,006
	Osaka-Fukuoka	500	628,500	3,809	1,904,500	27,465	13,733	91,438	43,719
	Fukuoka-Ulsan	240	122,160	1,343	322,320	7,870	1,879	32,355	7,951
	Ulsan-Taegu	90	44,280	1,310	117,900	6,942	625	29,599	2,664
	Fukuoka-Taegu (direct)		55,770	808	266,640	2,289	755	12,658	4,176
	Seoul-Taegu	234	150,228	2,140	500,760	9,806	2,295	41,091	9,617
	Seoul-Pyongyang								
	Sinuiju	200	122,400	1,858	371,600	4,758	952	25,788	5,158
	Pyongyang-Sinuiju	160	98,400	1,502	240,320	3,881	621	20,942	3,351
	Sinuiju-Ta-lien	273	165,711	1,582	431,886	3,458	944	17,013	4,645
	Subtotal	2,132	1,823,520	22,899	6,007,284	92,137	27,021	354,603	101,046
	Fukuoka-Fukuoka Line								
	Fukuoka-Naha	910	530,530	4,397	4,001,270	14,923	13,580	51,309	46,691
	Naha-Fukuoka	700	410,200	3,800	2,660,000	13,535	9,475	40,436	28,305
	Subtotal	1,610	1,940,730	8,197	6,661,270	28,458	23,055	91,745	74,996

Japanese Company
 RESTRICTED
 under 9

RESTRICTED

STATISTICS ON AIR TRANSPORTATION FOR 1938

Com- pany	Line & Route	Distance	Passengers		Freight		Mail		
			Flight Kilometers	Number	Kilometers	Weight	Metric tons Km	Weight	Metric tons Km
Tokyo-Sapporo Line									
	Tokyo-Sendai	330	165,460	1,434	473,220	1,390	459	9,063	2,991
	Sendai-Asuori	330	119,130	935	306,950	975	322	7,975	2,632
	Asuori-Sapporo	280	102,670	1,073	300,440	853	239	7,335	2,054
	Subtotal	940	407,350	3,442	1,082,210	3,218	1,020	24,373	7,677
Tokyo Ch'ang-Ch'uan Line									
	Tokyo-Fukuoka	931	567,931	4,476	4,144,746	46,391	42,988	73,088	67,696
	Fukuoka-Seoul	550	352,550	4,000	2,200,000	31,581	17,370	69,372	38,155
	Seoul-Shan-yang	570	294,120	2,319	1,321,830	16,123	9,190	39,282	22,391
	Shan-yang-Ch'ang-ch'uan	275	144,100	1,925	529,375	9,524	2,633	21,660	5,957
	Subtotal	2,326 2,320	1,358,701	12,720	8,195,951	103,619	72,167	203,402	134,197
Seoul-Ta-lien Line									
	Seoul-Ta-lien	550	326,700	2,828	1,555,400	17,147	9,423	22,623	12,448
	Subtotal	550	326,700	2,828	1,555,400	17,147	9,423	22,623	12,448

Japan Airways Company

RESTRICTED

RESTRICTED

STATISTICS OF AIR TRANSPORTATION FOR 1958

Company	Line & Route	Distance	Flight		Passengers Kilometers	Freight		Mail	
			Kilometers	Number		Weight Metric tons-M	Weight Metric tons-M		
	Tokyo-Pei-p'ing Line								
	Tokyo-Fukuoka	925	70,300	36,990	360,750	3,659	3,385	1,416	1,310
	Fukuoka-Ching-tao	1,030	73,130	363	373,890	2,806	2,890	3,163	3,258
	Ch'ing-tao-P'ien-ching	490	30,360	456	200,640	2,407	1,099	2,783	1,225
	P'ien-ching-Pei-p'ing	110	7,590	391	43,010	2,075	228	2,318	255
	Subtotal	2,555	181,380	1,600	978,290	10,947	7,562	9,680	6,048
All Japan Airways Company	Fukuoka-Nan-ch'ing Line								
	Fukuoka-Shang-hai	950	158,700	1,948	1,850,600	11,015	10,464	16,134	15,327
	Shang-hai-Nan-ch'ing	270	39,690	1,832	494,640	859	232	8,795	2,375
	Subtotal	1,220	197,390	3,780	2,345,240	11,874	10,696	24,929	17,702
All Japan Airways Company	Tokyo-Hiogo Line								
	Tokyo-Hiogo	380	17,100	83	31,540	12	5	55	21
	Subtotal	380	17,100	83	31,540	12	5	55	21
All Japan Airways Company	Tokyo-Toyama-Osaka Line								
	Tokyo-Toyama	413	23,954	140	57,820	103	43	60	25
	Toyama-Osaka	310	21,080	109	33,790	231	72	71	22
	Subtotal	723	45,034	249	91,610	334	115	131	47

RESTRICTED

STATISTICS ON AIR TRANSPORTATION FOR 1958

Com- pany	Lines & Route	Distance	Flight		Passengers Number	Passengers Kilometers	Freight		Mail	
			Kilometers				Weight	Metric tons-Mt	Weight	Metric tons-Mt
	Osaka-Natsumi Line									
	Osaka-Tottori	280	20,160	58	16,240	226	63	143	40	
	Tottori-Natsumi	110	7,370	64	7,040	130	14	81	9	
	Subtotal	390	27,530	122	23,280	356	77	224	49	
	Osaka-Kochi Line									
	Osaka-Tokushima	123	42,512	425	52,275	401	49	1,119	147	
	Tokushima-Kochi	182	61,152	348	63,326	220	40	809	147	
	Subtotal	305	103,664	773	115,601	621	89	2,008	294	
	Taiwan Circuit Line									
	Taihoku-Taipei	135	66,150	1,821	245,835	575	78	687	93	
	Taipei-Tainan	135	62,640	723	97,605	104	14	267	36	
	Tainan-Helto	40	13,880	404	16,160	54	2	126	5	
	Helto-Helto	130	20,930	305	39,650	3	-	69	9	
	Helto-Karenko	155	53,475	677	104,935	120	19	353	55	
	Karenko-Giran	110	27,280	1,161	127,710	128	14	544	60	
	Giran-Taihoku	10	9,920	1,367	54,680	604	24	609	24	
	Karenko-Taihoku (direct)		19,350	418	62,700	71	11	306	46	
	Subtotal	445	273,625	6,876	749,275	1,659	162	2,961	328	

RESTRICTED

STATISTICS OF AIR TRANSPORTATION FOR 1935

Company	Line & Route	Distance	Flight Kilometers	Number	Passengers Kilometers	Freight Weight	Metric ton-KM	Mail Weight	Metric ton-KM
	Taiwan-Hank Line	95	17,100	101	9,595	20	2	236	22
	Subtotal	95	17,000	101	9,595	20	2	236	22
	Seoul-Ch'angjin Line								
	Seoul-Hanlung	270	39,420	406	109,620	53	14	172	46
	Hanlung-Ch'angjin	290	35,960	242	70,180	50	15	111	32
	Subtotal	560	75,380	648	179,800	103	29	283	78
	Tokyo-Nagoya-Osaka Line								
	Tokyo-Osaka	425	63,325	-	-	638	271	5,025	2,136
	Osaka-Nagoya	139	6,255	-	-	67	9	1,706	237
	Nagoya-Tokyo	296	11,840	-	-	14	4	1,132	335
	Subtotal	860	81,420	-	-	719	284	7,863	2,708
	Total	15,335	5,876,424	64,318	28,026,356	271,224	151,715	745,125	358,663
	Osaka-Beppu Line								
	Osaka-Takamatsu	140	90,860	1,813	253,820	2,365	331	4,941	692
	Takamatsu-Hatsuyama	150	93,450	1,236	185,400	1,743	261	2,841	428
	Hatsuyama-Beppu	130	59,670	839	109,070	235	31	1,305	170
	Subtotal	420	243,980	3,888	548,290	4,343	623	9,087	1,290
	Nagoya-Fukuoka Line								
	Subtotal	67	8,308	122	8,174	-	-	62	5

RESTRICTED
Japan Airways CompanyRESTRICTED
Ando Aviation Research Institute

RESTRICTED

STATISTICS OF AIR TRANSPORTATION FOR 1938
Passengers:

Company	Line & Route	Distance	Flight		Freight		Mail	
			Kilometers	Number	weight	Metric ton-Km	weight	Metric ton-Km
Air Transfers Co Company	Tokyo-Shimoda Line	150	9,600	55	8,250	282	42	-
	Subtotal	1 50	9,600	55	8,250	282	42	-
	Kinosaki-Osaka Line	240	14,400	44	10,560	-	-	28
	Subtotal	240	14,400	44	10,560	-	-	28
	Total	377	276,288	4,109	575,272	4,625	665	9,197
	Grand Total	16,212	6,152,712	68,427	28,427	275,849	152,380	754,322

* Note: From January to March 1938 planes flew via Yokkaichi for fuel, making the distance 931 kilometers.

SOURCE: A Survey of Aviation

RESTRICTED

AIR TRAFFIC [>] RESTRICTED
~~172-AVIATION (Civilian)~~

Year	Number of Flights	Flights		Flight km	Passengers	Scheduled Flights	
		Hours	Min.			Freight (mt)	Flight (km)
1926	14,777	5,948	54	762,354	--	--	342,010
1927	17,987	7,313	03	878,231	--	--	399,773
1928	17,528	8,393	35	1,106,802	662	--	395,037
1929	20,628	12,108	52	1,711,683	3,274	18,234	1,214,422
1930	30,018	15,459	50	2,346,025	8,713	43,127	1,902,420
1931	51,370	20,600	47	3,010,260	8,057	34,944	1,983,860
1932	51,984	19,422	09	2,807,113	11,415	64,867	1,994,799
1933	53,521	22,104	21	3,153,860	11,779	51,755	1,959,631
1934	57,922	25,887	01	3,758,043	13,229	60,738	1,892,722
1935	68,044	28,606	22	4,201,777	11,877	75,643	2,037,506

AIR ACCIDENTS

Year	Number		Damage to Plane			Damage to Motor		
	Killed	Injured	Slight	Medium	Serious	Slight	Medium	Serious
1926	7	2	14	12	4	17	7	5
1927	3	4	15	77	13	23	3	4
1928	17	7	11	6	12	14	6	7
1929	3	8	13	12	15	17	12	5
1930	1	4	10	6	6	20	4	3
1931	12	18	19	14	24	13	7	9
1932	14	10	19	11	11	21	9	16
1933	11	23	8	15	25	23	8	13
1934	9	20	11	14	20	17	6	10
1935	9	30	15	12	29	110	9	17

AIR ACCIDENTS (Continued)

Year	Number of Killed and Injured				Number of damage per 10,000 flight hours					
	Per 10,000 flights		Per 10,000 flight hrs.		Plane			Motor		
	Killed	Injured	Killed	Injured	Slight	Medium	Serious	Slight	Medium	Serious
1926	4.7	1.3	11.6	3.3	23.5	20.1	23.5	28.5	11.7	8.4
1927	1.6	2.2	4.1	5.4	20.5	9.5	17.7	31.4	4.1	5.4
1928	9.7	4.0	20.2	8.3	13.1	7.1	14.3	16.6	7.1	8.3
1929	1.5	3.9	2.5	6.6	10.7	9.1	12.4	14.0	9.9	4.1

RESTRICTED

Year	Number of Killed and Injured per 10,000 flights Per 10,000 Flight Hrs.				Number of damage per 10,000 Flight Hours					
	Killed	Injured	Injured	Killed	Plane			Motor		
					Slight	Medium	Serious	Slight	Medium	Serious
1930	0.3	1.3	2.6	0.7	6.5	23.2	23.4	12.9	13.6	11.1
1931	2.3	3.5	8.7	5.8	9.2	6.8	11.7	6.3	3.4	4.4
1932	2.7	1.9	5.2	7.2	9.8	5.7	5.7	10.8	4.6	8.2
1933	2.1	4.3	10.4	5.0	3.6	6.8	11.3	10.4	3.6	5.9
1934	1.6	3.5	7.7	3.5	4.3	5.4	7.7	6.6	2.3	3.9
1935	1.5	4.9	10.4	3.2	5.2	4.2	10.1	3.5	3.2	5.9

Source: Japan Statistical Year Book 1937.

RESTRICTED

10

RESTRICTED

BIBLIOGRAPHY ON CIVIL AVIATION IN JAPAN

1. Aviation Bureau, Communications Ministry, A Survey of Aviation, 1940, 251 pp. FDB No 326344.
2. Cabinet Statistics Bureau, Japan Statistical Year-Book, 1937, 465 pp., FDB No 409723.

NOTE: Following information is available in A Survey of Aviation, but has not been extracted.

1. Airway beacons

Name

Location

Type of lights

Candle power and visible distance

2. Types of airplanes used for civil aviation

Type

Engine

Name

Horsepower

Total weight

Loading capacity

Number of crew and passengers

Cruising radius

Cruising speed

Structure

RESTRICTED

RESTRICTED

NOTE: These documents are available at Foreign Documents Branch or the Library of Congress.

BIBLIOGRAPHY ON JAPAN'S CIVIL AVIATION

L.C. BAG #501

1. Information Bureau, National Reader on Aircraft, 1941, 193 pp., 24,706 538

L.C. BAG #502

2. KUWANA, Takuo, History of World Aeronautical Progress, 1943, 311 pp., 395727 538.01
3. HARIYA, Kusan, Lectures on the Establishment of Civilian Aeronautical NAIVISAI Policy, 1935, 81 pp., 30321 538.01
4. KOMABAYASHI, Hitaro, History of the Development of Aircraft, Airports, Air Routes, Aircraft Rules and Regulations, 1942, 179 pp., 39934, 538.01
5. KIMURA, Hidemasa, The History of Aeronautical Development, 1940, 245 pp., 32986 538.01

L.C. BAG #503

6. WAKURADA, Hebutada, Handbook of the Aviation Industry, 1940, 794 pp., 221896 538.059
7. Nakajima Aircraft Company Ltd., The Aerial Reporter, 1938-40 204,150, 204,153, 204,157-60 538.35

L.C. BAG #504

8. Japan Aircraft Company Ltd., Findings of the Research Association, 1944, 90 pp., (2 copies) 19,331 538.074
9. Mitsubishi and Kawasaki Aircraft Reports and Manuals, 1939-40 3 vols., 378299 538.06

L.C. BAG #505

10. HASHIMOTO, Yoshio, Increase in Efficiency of Airplane Industry, 1943, 304 pp., 240316 538.076

L.C. BAG #516

11. Aichi Prefectural Office, General Outline of the Plans of Aichi Prefecture in Relation to Aircraft Production, "secret", 1943, 112 pp., 238424 538.5
12. KOBAYASHI, Yoshiyasu, Illustrated Account of Aircraft Manufacturing Methods, 1943, 216 pp., 213093 538.6

RESTRICTED

16

RESTRICTED

13. OHISHI, Takijiro, Increased Production of Aircraft for the Frontline of the Decisive Battle, 1944, 61 pp., 194399 538.6

L.C. BAG #518

14. HITTA, Makoto, Airport, 1943, 283 pp., 339061 538.9

L.C. BAG #706

15. Greater Japan Flying Association, Coverage of World Civil Aviation, 1943, 397 pp., 338998 689.35

16. KAWASHIMA Sei-ji, International Air Routes, 1938, 310 pp., 220127 689.9

17. NARAZAKI Toshio, The Practicality of Air Transportation, 1941, 197 pp., 377991 689.5

18. ISHIHASHI, Isaku, Revised Air Regulations, 1944, 237 pp., 238990 689.2

19. NARAZAKI, Toshio, A Discussion of Aerial Navigation Policies, 1940, 266 pp., 279874 689.104

20. SASE, Shogo, The Various Questions Concerning Land and Air Traffic Laws, 1942, 307 pp., 341122 689.1

21. NARAZAKI, Sumio, Essentials of Air Transport, 1941, 197 pp., 340585 689.1

22. Aviation Bureau, Communications Ministry, Survey of Aviation, 1941, 174 pp., 326345 689.074

23. TAKUCHI, Masatora, A History of the Development of Japanese Aviation, 1940, 352 pp., 331963 689.08

24. KONAWA, Teichiro, Air Reader, 1932, 267 pp., 222997 689

L.C. BAG #714

25. Central Aeronautical Research Institute, Detailed Drawings of Landing Fields and Disposition of Buildings, 1942, 381714 538.9

PDS LIBRARY

26. The Asahi Newspaper Company, The Dawn of Aerial Navigation, 1944-45, 9 vols., 200225 689.05

27. Aeronautical Bureau, Communications Ministry, General Outline of Principal Civil Air Transportation Enterprises of Various Countries, 1938, 121 pp., 369903 689.9

28. Superintendence Section, Air Office, A General View of World Civil Aviation, 1943, 397 pp., 251867 689.4074

29. Aviation Bureau, Communications Ministry, A Survey of Aviation, 1940, 251 pp., 326344 689.074

RESTRICTED

19