

50X1-HUM

Page Denied

50X1-HUM

[Redacted Box]

"Acid Serum Institut"

Located at Berlin-Weissensee, Grosse Seestrasse 4, Telephone 56-15-33

This enterprise, like the "Chemische Fabrik Gruenau" belongs to the "VVB Pharma" with headquarters at Halle, Vogelherd 1b. The manager of the VVB is Mr. Dubler.

The Berlin office of the VVB Pharma is located in the building of the firm VEB Much A.G., Berlin-Pankow, Berkumstrasse 2, Telephone 44-17-36. Managers are Messrs. Gell and Dr. Sommer.

Contents:

- I. Origin and Location of the Plant
- II. Personnel
- III. Organization
- IV. Manufacture
- V. Sales and Consumers
- VI. Development.

SECRET

I. Origin and Location of the Plant.

The plant at Berlin-Weissensee was set up after the end of the war. The firm was originally located in the center of the Berlin pharmaceutical business (Berlin NW 7, Am Zirkus 8, near the Friedrichsstrasse Railroad Station). This location was bombed out, and the firm moved temporarily to Hohenschonhausen, from where it was displaced by a Soviet office. At the beginning of 1946 it moved to its present quarters. The house formerly contained a film-copying plant which the Russians dismantled and did not set up again.

The Berlin plant is a daughter concern of the main plant at Dessau. The name Acid is a contraction of the initials of "Anhaltisches Serum-Institut, Dessau". Both plants were run by a central office which was located in the Western Sector and which has now lost all influence. The Dessau plant has also been expropriated and ^{also} now/belongs to the VVB Pharma. Both plants are in only rather loose contact

with each other, apparently because petty rivalries between the managements of the two plants prevent ~~and~~ close cooperation.

The Dessau plant is much larger than the one in Berlin. It also has a small snake farm for the production of snake poison. It owns 300 hogs for the production of erysipelas serum for tetanus injections, and works together with a large nationalized estate. It concentrates mainly on the field of veterinary medicine, while the Berlin plant concentrates on producing preparations for human use.

The Berlin plant was confiscated in 1946. In 1947 it was attached to the DTV (rump concern) and in February 1949 it was officially declared to be a VEB (Volkseigener Betrieb - nationalized plant) and attached to the zonal concern, which thus contains two serum factories - the only ones in the Soviet zone.

The attached map of the plant is not drawn to scale, but only to indicate the layout.

The plant consists of

- a) a massive, two-story entrance building, with
janitor's room, deliveries, shipping, and raw materials storage
- b) a one-story wooden building
managing office, clerical department, sales department
- c) main building
ground floor: room for preparing of nutritive solutions for cultures, sterilizing room for vessels, mixing machine room, laundry
second floor: laboratories and manufacturing, rooms for growing bacteria cultures, filling room for phials, room for taking and treating of blood, office and special laboratory of the production manager.
third floor: Filling room for various products, packing department, storage for wrapping material, storage for finished products
- d) old building, running in longitudinal direction
ground floor: heating plant, steam generator, animal stables, mechanical ~~workshop~~ shop, carpenter shop
second floor: room with laboratory mice, union office, personnel office, paymaster's office, accounting department

SECRET

third floor: workers' rooms

e) apartment house

ground floor: canteen, janitor's apartment

second floor: manager's apartment.

While the firm was being held in trust, it was very poorly managed and operated at a high loss. When the VVB Pharma took it over, it had debts of 400 000 East Mark. Approximately 180 000 East Mark in bank debts was canceled, part of the rest was paid, while the matter of payment of the remainder has not yet been settled. The reorganization of the plant did not really start until the spring of 1949, but by the end of the year it was already able to operate without loss. On the whole, the plant was built up in a very satisfactory and thorough fashion. At present, there are still a lot of shortcomings and further development has been hampered badly, because investment credits for plants not producing critical materials have been drastically cut. The plant is still very badly in need of linoleum floors for the laboratories, double windows, modern binocular microscopes, etc.

SECRET

II. Personnel:

Manager: Goez, approx. 50 years old, member of the SED (Socialist Unity Party of Germany), unskilled laborer, used to be janitor and then chairman of the factory trade union.

Personnel director: Atsler, approx. 40 years old, ex by profession toolmaker, used to work in this capacity at AEG at Treptow, member of SED, appears to be a clear-thinking, sober man. He is also the chairman of the factory trade union and holds a very strong position in the plant.

Chief physician: Dr. Brandenburg, no party affiliation, his activity at the plant is not his main occupation.

Production manager: Ozygala, approx. 50 years old, probably pharmacist by profession, no ~~political~~ party affiliation, politically neutral, well versed in his profession of somewhat choleric nature.

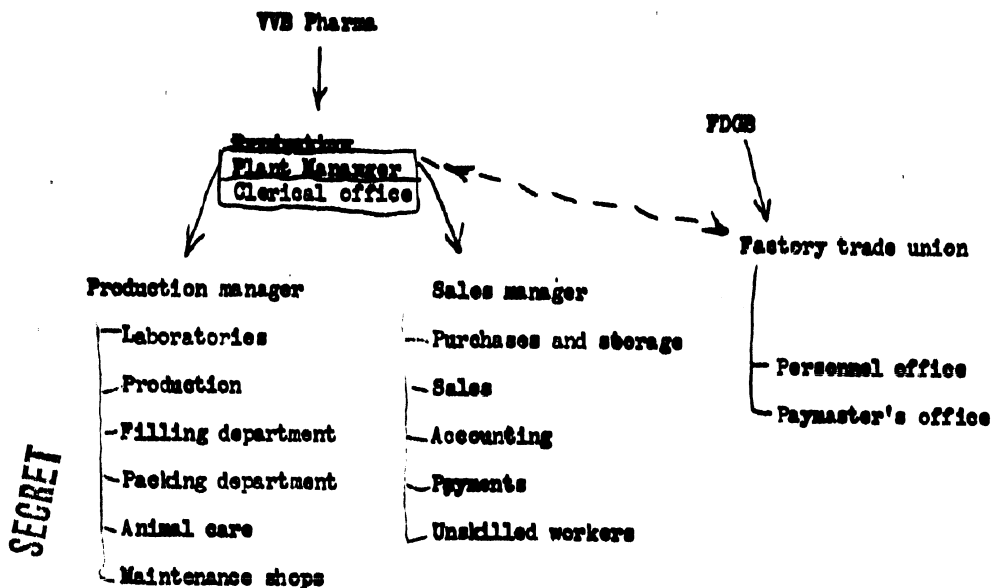
Employees: October 1949: 68

January 1950: 81

Planned for July 1950: 100

The SED factory group ~~XXXX~~ consists of 9 persons (8 members, 1 candidate for membership). All employees are members of the FDGB (Freier Deutscher Gewerkschaftsbund- Free German Federation of Trade Unions).

III. Organisation



IV. Production

The products listed below are manufactured by the plant:

~~Immunological~~ vaccines

Serum and ~~immunological~~ products for human use:

Name	Use
Diphtheria toxoid	Diphtheria vaccine
Di-Scarha-Toxoid	Double vaccine against diphtheria and scarlet fever
Tri-Toxoid (Di-Sea-Tuss)	Triple vaccine against diphtheria, scarlet fever and whooping cough
Gonasid	against gonorrhoea, made in two strengths
Hemoseran-Asid	for stimulation the antibodies against infectious diseases, against neurovegetative disturbances and allergies
Intestalsin-Asid	against infectious intestinal diseases
Pyrasid	fever-reducing drug, made in two strengths

Serum and vaccine products for human use, cont'd

Name	Use
Staphyletropin	against furunculosis and similar diseases
Testesera-Acid-A-B-O	for determination of blood group
Tussitropin-Acid	against whooping cough
Typhus-Paratyphus B vaccine Acid	against typhus and paratyphus
Viprasid	preparation made of snake poison, against asthma, neuralgia, rheumatism, etc.

Veterinary drugs:

Perlacar	against mange and similar skin diseases of domestic animals
----------	-------------------------------------------------------------

Anti-virus preparations:

Pylesin	made in form of drops or ointment
---------	-----------------------------------

Pharmaceutical preparations:

Algolyt	ear drops
Rhinelyt	anti-virus eye emulsion against catarrh diseases
Valvanol	general disinfectant
Vipra-utan	ointment against rheumatism

SECRET

The entire production operation resembles ~~much~~ the character of a large laboratory rather than that of a factory. Work is done expertly, carefully and deliberately. Exact planning, such as is done in a wood- or metal-processing plant, is impossible, since the materials are not inert but live. It happens repeatedly that cultures of bacteria will die despite the best care. The production of serum for human use depends on human blood donors who do not come regularly, while animal experiments do not always coincide even though the same vaccines were used. There are a number of such uncontrollable circumstances which prevent standardization or precise planning. Since the health offices cannot know in advance with certainty how much vaccine they will need at any given time and since vaccines cannot be stored for great periods and thus cannot be kept in stock in great quantities, sudden/heavy loads on the production of these preparations occur frequently, thus necessitating keeping on hand of large stores of basic materials for their production.

The health offices generally set short delivery terms for the vaccines, while at least several weeks are needed for the production of a given quantity. It is thus difficult to predict the profits of the enterprise or to set sales quotas, much less to fill them.

The average hourly wage of the female workers is 1.01 to 1.17 DM. Wages are not paid on a piecework basis.

V. Supply of Raw Materials

The main consumer of raw materials is the nutritive preparations department, where beef and horse meat and plant extracts are processed. The best plant vegetable substance is agar-agar which is obtained from ~~the~~ Indian seaweed. The plant still has a stock of 5 to 6 kilogram. New shipments are reportedly unavailable even for payment of Western Marks. A substitute, made of seaweed from the Baltic, may eventually be suitable as an additive.

The obtaining of snake poison is also difficult. It was attempted to establish an snake farm at the plant with vipers shipped by air from Yugoslavia. Apparently the transport conditions are still too poor for the animals, because all 25 vipers which were alive on arrival died within two weeks. Snake poison is now obtained from the snake farm of the Dessau plant.

There is also a shortage of ~~mixing~~ salicylic acid products, caffeine, phenacetine, and similar products, which all have to be obtained in a roundabout way from the Western Sector of Berlin or from the Western zones of Germany. Since the quantities required are relatively small, due to the nature of the production, the most essential quantities have always been available. The prices of the finished products are very good, so that it is possible to buy Western Marks with the high profit and use these to purchase raw materials.

VI. Sales and Consumers.

The monthly plan quota for the first and second quarter of 1950 begins with a turnover of 107 000 DM and ends with 116 000 DM. This quota can probably be met. The productivity during the last quarter of 1949 was 4 000 DM per worker, which is a fairly high figure.

The products are supplied mostly to pharmaceutical wholesalers, to the public health offices of the Eastern Zone, and, to a small extent, directly to pharmacies (this is really prohibited, since it is in violation of the regulations governing goods traffic). There are no reparations orders, because the vaccines cannot be stored for a great length of time and are thus not suitable. The shipments directly from the plant to the Red Army are small. In the last quarter of 1949 they amounted only to 6% of total sales. The products are usually shipped directly to the troop units and payments made on ~~bank~~ delivery.

The civilian market is ^{divided} distributed between the Berlin and the Dessau plants. The Berlin plant supplies Berlin, Brandenburg, and Mecklenburg-Pommern, while the Dessau plant supplies Sachsen, Sachsen-Anhalt, and Thuringen.

No export shipments have been made since the war. ~~Since the war, vaccine exports~~ ~~have been made~~ Demands for vaccines have been received from Pakistan, Denmark, and Sweden, and bids were worked out and submitted to the Ministry of Foreign Trade and Materials Supply, but the Ministry has not acted on them for a considerable time. The plant management does not know whether these export projects will materialize.

SECRET

VII. Development new

At the present time ~~no~~ bacteriological prophylactics and vaccines are being development, since all personnel is concentrating on the building up and developing of the plant itself. This situation will probably remain unchanged throughout 1950. After careful investigation in all directions, no indications could be found according to which the plant is carrying out or has been carrying out any orders for bacteriological warfare, neither was any such work carried out there during the war. Live cultures of bacteria are not shipped to any ~~customers~~ customers of the plant. The shipments consist exclusively of toxins, i.e. vaccines which do contain bacteriological poisons, but in which the bacteria have been killed, making the vaccines ~~strong~~ incapable of spreading bacteria. As a matter of fact, these substances cannot cause any infections. The rumors which state the contrary do not correspond to the facts. Because of the extraordinary importance of this question, it was investigated with special care, and the investigation was not limited to information received from one source.

Secret shipments of any kind are impossible, due to the nature of the production process and the organization of the plant. This is the situation prevailing at the present time.

Legend of sketches

Grosse Seestrassse - name of street

Gruenflaeche - lawn.

Massivor, zweigeschoessiger Bau - massive, two-story building

Pfoertner - Janitor

eingeschoessiger Holzvorbau - single-story wooden building

Haupt-Fabrikgebäude - main factory building

alter Laengebau - old building, in longitudinal direction

Lagerplatz und Schuppen - storage depot and shed

Wohnbau - apartment building.

SECRET