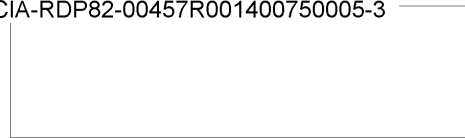


CENTRAL INTELLIGENCE AGENCY
~~SECRET~~
INFORMATION REPORT



~~CONFIDENTIAL~~

COUNTRY USSR

DATE DISTR. 21 April 1948

SUBJECT Railroads and Bridges

NO. OF PAGES

PLACE ACQUIRED

NO. OF ENCLS. (LISTED BELOW)

50X1-HUM

DATE OF

SUPPLEMENT TO REPORT NO.

THIS DOCUMENT CONTAINS INFORMATION AFFECTING THE NATIONAL DEFENSE OF THE UNITED STATES WITHIN THE MEANING OF THE ESPIONAGE ACT OF U. S. C. 51 AND AS AMENDED. ITS TRANSMISSION OR THE REVELATION OF ITS CONTENTS IN ANY MANNER TO AN UNAUTHORIZED PERSON IS PROHIBITED BY LAW. REPRODUCTION OF THIS FORM IS PROHIBITED. HOWEVER INFORMATION CONTAINED HEREIN MAY BE UTILIZED AS DEEMED NECESSARY BY THE RECEIVING AGENCY.

THIS IS UNEVALUATED INFORMATION FOR THE RESEARCH USE OF TRAINED INTELLIGENCE ANALYSTS

50X1-HUM

Railroads

1. The railway from Pinsk to Brest-Litovsk, which was running as a single-track line while the foundations were being relaid, was put into operation again as a double-track line in March 1947.
2. The marshalling yard 10 kilometers west of Brest-Litovsk covers an area of 6 square kilometers. Conversion from normal to broad gauge was executed during 1946-47.
3. The following lines have been repaired and are fully operating:
 - Kherson-Dnepropetrovsk (double-track)
 - Pinsk-Gomel
4. The double-track line from Ust Labinskaya to Maikop was put into operation in October 1946.
5. A new railway line Pskov-Soltsi-Shimsk started operating in early 1947.

Bridges

6. The damaged road bridge over the Pripyat River at Mozir has been reconstructed, and it was opened to traffic in March 1946. It is a concrete bridge with a load capacity of 60 tons.
7. The rebuilding of the rail and road bridge over the Don River near Voronezh was started in January and completed in November 1945. The bridge is of concrete (Ganzbeton) reinforced with iron and has a traffic capacity of 150 tons. It is from 15 to 17 meters wide and 400 meters long.
 Comment: west of Voronezh, there is a concrete bridge with a load capacity of approximately 100 tons which carries Voronezh-Kharkov railroad over the Don.)

50X1-HUM

50X1-HUM

50X1-HUM

50X1-HUM

CLASSIFICATION

SECRET CONTROL U. S. OFFICIALS ONLY

STATE	NAVY	<input checked="" type="checkbox"/> NSRB																		
ARMY	<input checked="" type="checkbox"/> AIR	<input checked="" type="checkbox"/>																		

~~SECRET~~

Document No. 5
 NO CHANGE in

 Class.
 Auth:
 Date: 20 APR 1978