

~~CONFIDENTIAL~~  
CENTRAL INTELLIGENCE AGENCY  
INFORMATION REPORT

REPORT

50X1-HUM

COUNTRY Germany (Russian Zone)  
SUBJECT Altenhain Ammunition Depot

DATE DISTR. 3 September 1978  
50X1-HUM

NO. OF PAGES 3

PLACE ACQUIRED

NO. OF ENCLS. (LISTED BELOW)

Attachments: 4

DATE OF INFO

SUPPLEMENT TO REPORT NO.

50X1-HUM

THIS DOCUMENT CONTAINS INFORMATION AFFECTING THE NATIONAL DEFENSE OF THE UNITED STATES WITHIN THE MEANING OF THE ESPIONAGE ACT 50 U.S.C. 31 AND 32, AS AMENDED. ITS TRANSMISSION OR THE REVELATION OF ITS CONTENTS IN ANY MANNER TO AN UNAUTHORIZED PERSON IS PROHIBITED BY LAW. REPRODUCTION OF THIS FORM IS PROHIBITED. HOWEVER, INFORMATION CONTAINED IN BODY OF THE FORM MAY BE UTILIZED AS DEEMED NECESSARY BY THE RECEIVING AGENCY.

THIS IS UNEVALUATED INFORMATION FOR THE RESEARCH USE OF TRAINED INTELLIGENCE ANALYSTS

50X1-HUM

1. Altenhain (E-41) Ammunition Depot is located some six kilometers south of Würzen and directly SE of Brandis Airfield. The roads leading to the dump come from Altenhain and Trebsen and meet in a triangle about one and a half kilometers east of Altenhain. North of this triangle is the entrance to the dump, with the entrance to the dump proper via the administration compound, which consists of one administration building and two buildings housing the armorer's shop.
2. Apart from the main entrance, through which all personnel must enter, the dump disposes of three emergency entrances, one each on the north, west, and south sides. The whole dump is bound by a fence, which is encircled by a ten meter wide strip of wood in which the Soviet army troops attached to the dump are quartered. Encircling the dump outside the wood, the country-side has been cleared of trees and bushes for 100 meters.
3. North of Altenhain a branch line leaves the railway and runs into the dump in the SW corner. Within the dump itself a narrow-gauge railway also serves some of the groups of bunkers, while the remainder and the sheds are connected by roads.
4. The Commandant of the dump is a Lt. Colonel who lives in Altenhain with his family. His deputy is Captain Roman Soshenkov. The dump comes under the command of Weimar, and all officers when posted first have to report to Weimar.
5. A total of 250 Germans, both men and women, are employed in this dump and are divided into three working parties as follows:
  - a. Arbeitskommando Altenburg : 140
  - b. " Cera : 60
  - c. Armorer's Shop : 50
6. The two Arbeitskommandos tend and store the ammunition, while the armorer's shop repairs equipments of all kinds, but primarily guns. The loading of ammunition both outside and inside the dump is done exclusively by Soviet army troops, who wear black shoulder-boards with red piping.

CLASSIFICATION ~~SECRET~~/CONTROL - U.S. OFFICIALS ONLY

STATE	<input checked="" type="checkbox"/> NAVY	<input checked="" type="checkbox"/> NSRB	DISTRIBUTION									
ARMY	<input checked="" type="checkbox"/> AIR	<input checked="" type="checkbox"/>										

Document No. 8  
 NO CHANGE in Class.   
 DECLASSIFIED  
 Class. CHANGED TO: TS S   
 DDA Memo, 4 Apr 77  
 Auth: DDA R.G. 77/1723  
 50X1-HUM

~~SECRET~~  
~~CONFIDENTIAL~~

SECRET/CONTROL - U.S. OFFICIALS ONLY

CENTRAL INTELLIGENCE AGENCY

50X1-HUM

-2-

6. Twenty-five to thirty railroad cars carrying ammunition and explosives arrive in the dump weekly. Every four weeks fifteen to twenty trucks arrive with their drivers from Weimar for transport duties in the depot area. These troops wear black epaulettes with crossed gun-barrels.

50X1-HUM

7. The Bunker Map (attachment 3) shows the lay-out of the depot. In point of fact, the bunkers are not quite as evenly spaced as the sketch suggests. The question marks are self-explanatory. Full details of the bunkers and storage sheds are as follows:

Bunkers 1 - 9

Contain artillery ammunition (Patronenmunition), each projectile weighing 24 kgs and having an overall length of 73 cm. These shells are solid shot with no fuse igniter and are piled one on top of the other without any Schutzkorb.

Bunkers 10 - 33

Contain heavy artillery ammunition (Patronenmunition), each projectile weighing 62 kgs.

Bunkers 34 - 59

50X1-HUM

Contain anti-tank ammunition, each projectile having an overall length of 72 cm, and a caliber of approximately 120 mm. The fuse igniter head is black and projects 2 mm over the side of the shell. The fuse igniter itself is screwed on to the shell (Gasdurchtrittslöcher (gas escape apertures)).

Bunkers 60 - 92

Contain heavy artillery ammunition, each projectile having an overall length of 63 cm, weighing 62 kgs and being packed in Körben. The caliber is about 210 mm (This description also covers ammunition in Bunkers 10 - 33).

Bunkers 93 - 101

Contain 160 mm mortar ammunition (see attachment I). The fuse igniters are either yellow or blue in color. The tail fin component is fitted to the bomb by a bayonet joint.

Bunkers 102 - 119

Contain artillery ammunition of the same type as in Bunkers 1 - 9, Bunkers 102 - 119 are organized into three groups: Bunkers 102 - 107, Bunkers 108 - 110, and Bunkers 111 - 119. All are three times as large as the other bunkers and each has three entrances.

Sheds I - V (all sheds measure 10 m long x 5 m wide x 3 m high).

Contain guns which can fire the ammunition stored in Bunkers 1 - 9 and 101 - 119. The equipments are guns with barrel length of over 5 meters and howitzers with barrel length of about 3.60 meters.

Sheds VI - X

Contain high explosives of the following types:

- a. Blättchensprengstoffe (leaf explosive) with each side 3 mm long and looking like a rhomboid. A single Blättchen is 2 mm thick.
- b. Stangensprengstoffe (stick explosive) one meter long and 1.5 cm in diameter.
- c. Dark black powder.

SECRET/CONTROL U. S. OFFICIALS ONLY

SECRET

**SECRET** - U.S. OFFICIALS ONLY

CENTRAL INTELLIGENCE AGENCY

50X1-HUM

Sheds XI - XIII

Contain corks.

Sheds XIV - XVII

Contain anti-tank guns which can fire the 122 mm projectiles of Pankers 34 - 59.

Sheds XVIII - XX

Contents unknown.

Sheds XXI - XXII

Contain Stangenpulver in Stabform one meter long, 1.5 mm in diameter.

Sheds XXIII - XXIV

Contain high explosive powder which is dark black and looks like salt grains.

SECRET/CONTROL - U.S. OFFICIALS ONLY

**SECRET**

SECRET/CONTROL - U.S. OFFICIALS ONLY

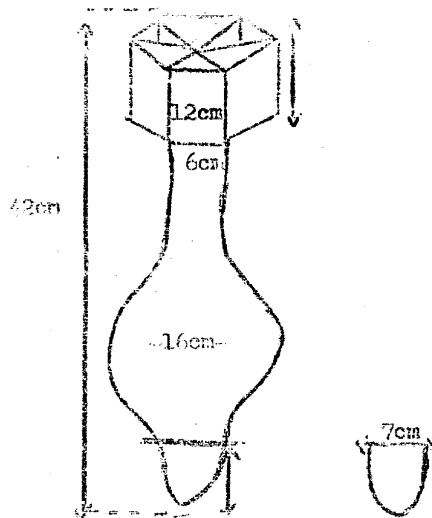
**SECRET**

CENTRAL INTELLIGENCE AGENCY



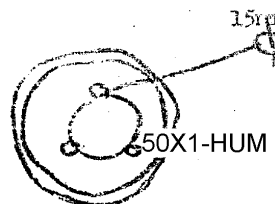
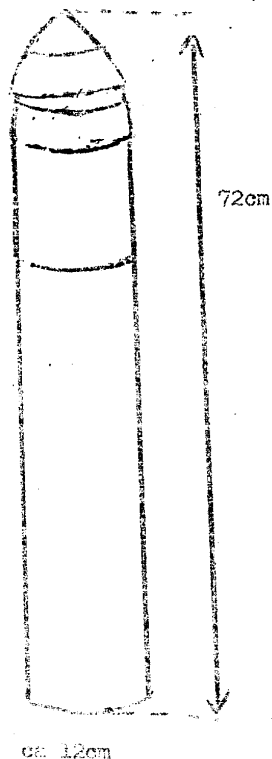
Attachment I

50X1-HUM



Mortar

Attachment II



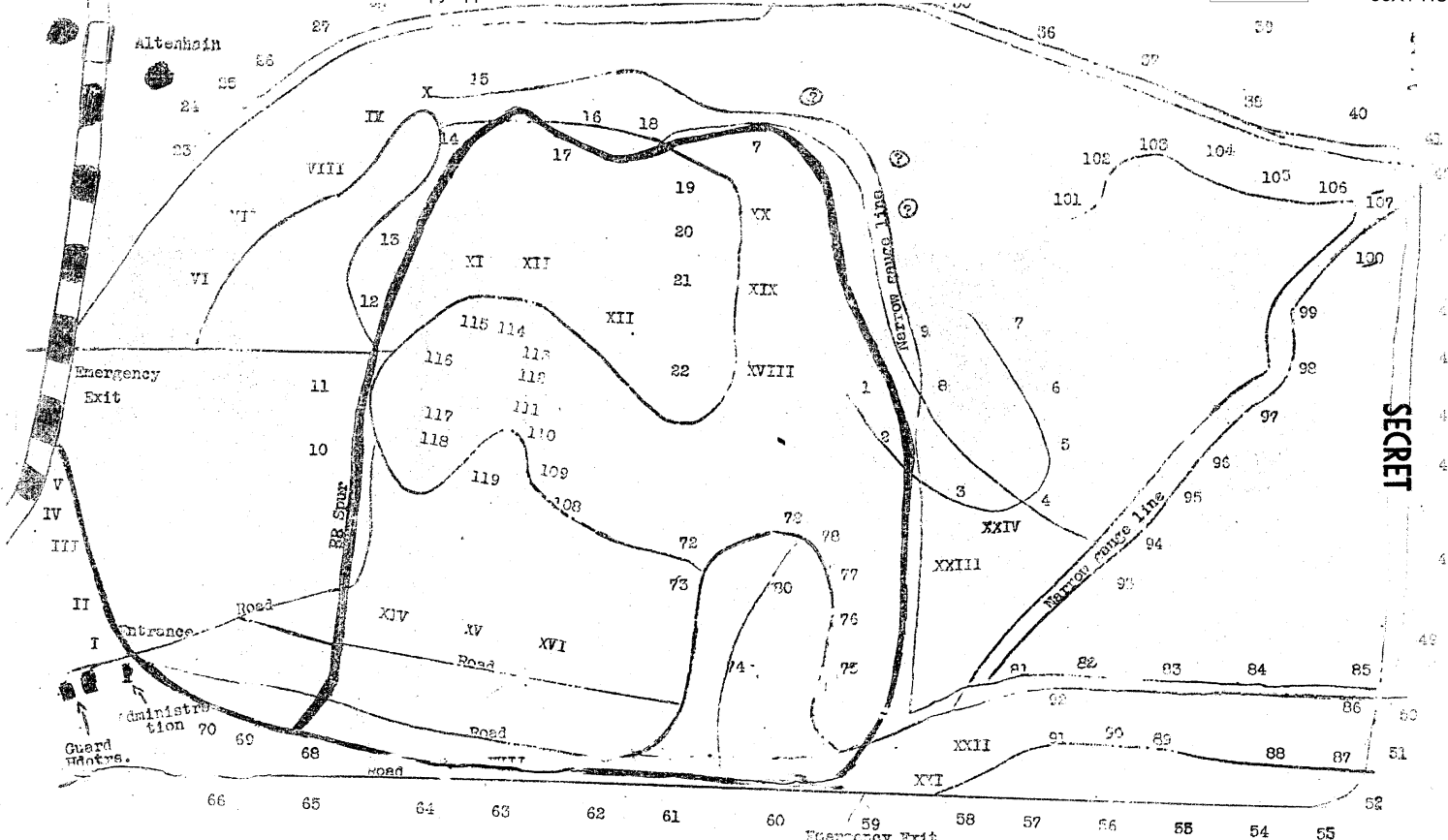
Shell Bottom

SECRET/CONTROL - U.S. OFFICIALS ONLY

**SECRET**

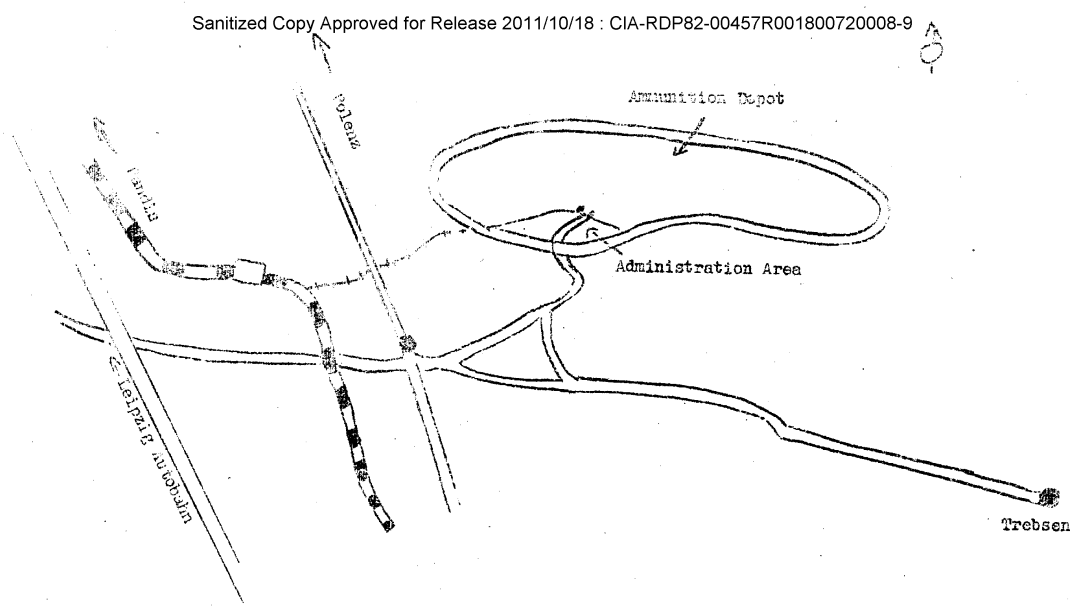
SECRET


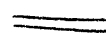
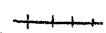
SECRET



Locations Map

AO



-  Railroad
-  Highway
-  Branch Line to Depot

SECRET

SECRET

SECRET  
U.S. OFFICIALS ONLY  
CENTRAL INTELLIGENCE AGENCY

Attachment 4

50X1-HUM